

Lake Oswego Middle School

Design Update June 2022



STUDENT REFLECTIONS ON THE FUTURE LAKE OSWEGO MIDDLE SCHOOL

ideas about WATER

"I think there should be a water feature or fountain for everyone to meet people who don't go to the school."

Incorporating natural features like water cascading down a wall with plants, which would create an inspired feeling and would make it feel less stuffy and drab -alysa, callie, and taylor

"Learning opportunity... filtration through the layers of steps." - William

"Water adds a calming sound and feeling ... the wallpaper is reminiscent of water ripples and is inspiring and colorful."

ideas about NATURE

"Nature park (like the pond that currently exists in our school)." - Elliott

"Existing apple trees." - William

"Nature filled pathway toward the lobby." -Owen

"A plant wall is one thing that I feel is a must in the new school. 1: plants filter the air and it can help for us to breath more clean air. 2: It brings in a connection to nature that students lack."

use of wood, stone, and other natural materials

"Hallways with a nice bright view of nearby nature would be very appealing to see."

"Greenery everywhere." -Giulia

"Thinking Trees." - Callie

"A plant wall is one thing that I feel is a must in the new school. 1: plants filter the air and it can help for us to breath more clean air. 2: It brings in a connection to nature that students lack."

ideas about SOCIAL AREAS

"Use as a lunch option." -Giulia

"I think this should be an outdoor commons and an area for lunch."

Seating areas

Classroom

social areas are bigger as they are not congested

Trails to courtyard and pond. -Louise

STUDENT REFLECTIONS ON THE FUTURE LAKE OSWEGO MIDDLE SCHOOL

ideas about **LEARNING**

Express our identity membership in our school.

Clubs have an independent space and a place for student speakers to talk - Logan, Will, Zach

There could be pavement to test things in science.

There could be pavement to test things in science.

Outdoor learning areas

Science faces courtyard with a tree buffer. - Louise

It would be really cool to make something like the 6th image for studying

ideas about **CONNECTIONS**

Paths connect science classrooms with the courtyard." - Dan

Path connect science classrooms with the courtyard

using a tech-based notice board in some common space where people can share ideas

"To fix the hallways, we can make them wider and taller with more natural light to make it feel bigger." - Evan and Tony

Make the courtyard connect to Springbrook through paths.

the courtyard could be a really nice place to sit during lunch or hangout with friends instead of using the lunch and blocking other way, like could do this by in the new school having to have the other side to have to keep to walk through and a short cut instead of having to go out of your way. then still having the cafeteria near so it makes a nice place to study also big lunch or just to eat lunch with friends and play board like

ideas about **ENTRY**

Outdoor display of student work."

possibly a fountain gardens

Outdoor display of student work."

Having a circular lobby allows for a more central gathering areas." - Andrew and Bhavesh

Outdoor display of student work."

possibly a fountain gardens

Add a safe bike parking spot, and open office somewhere here?

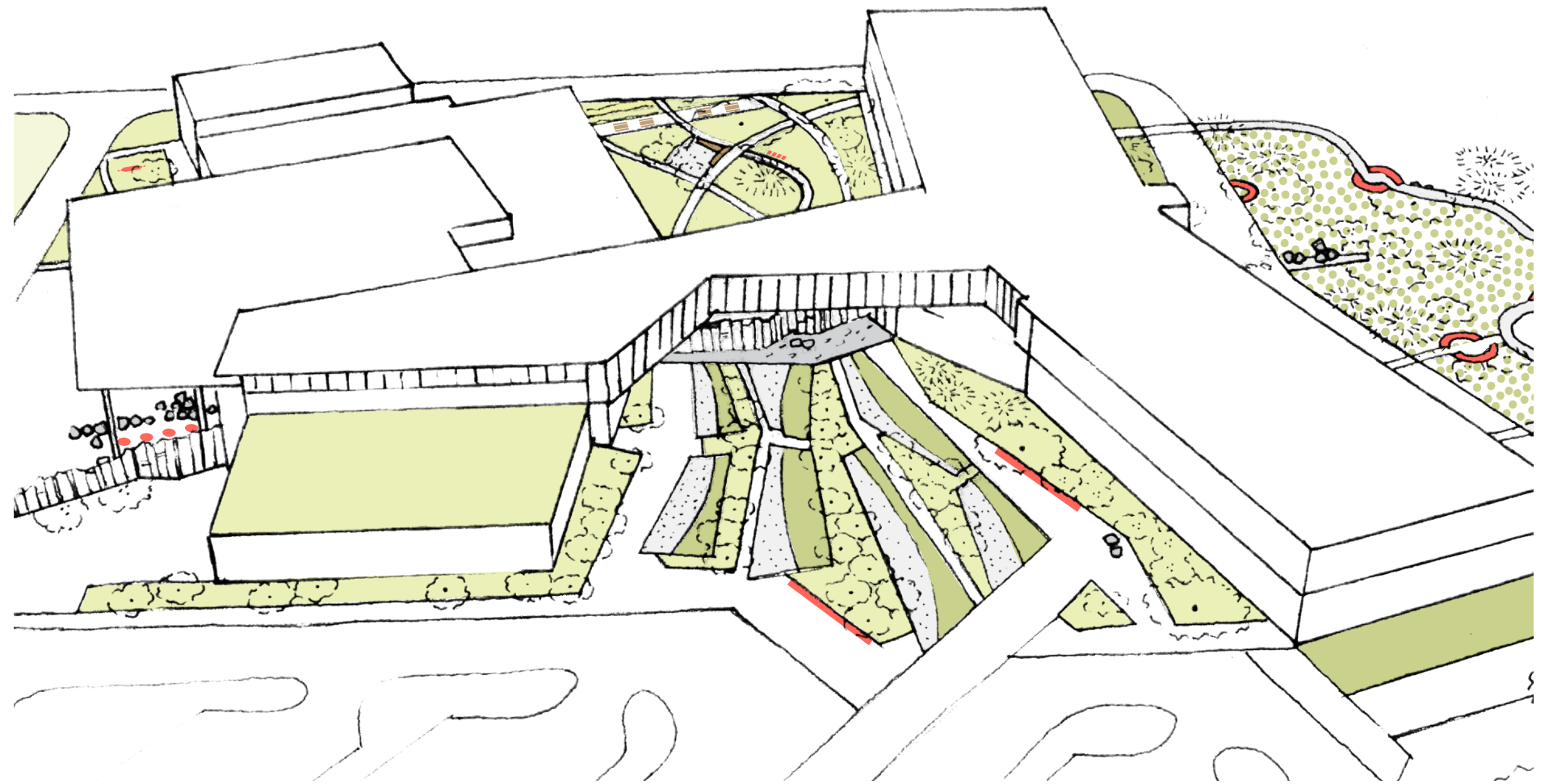
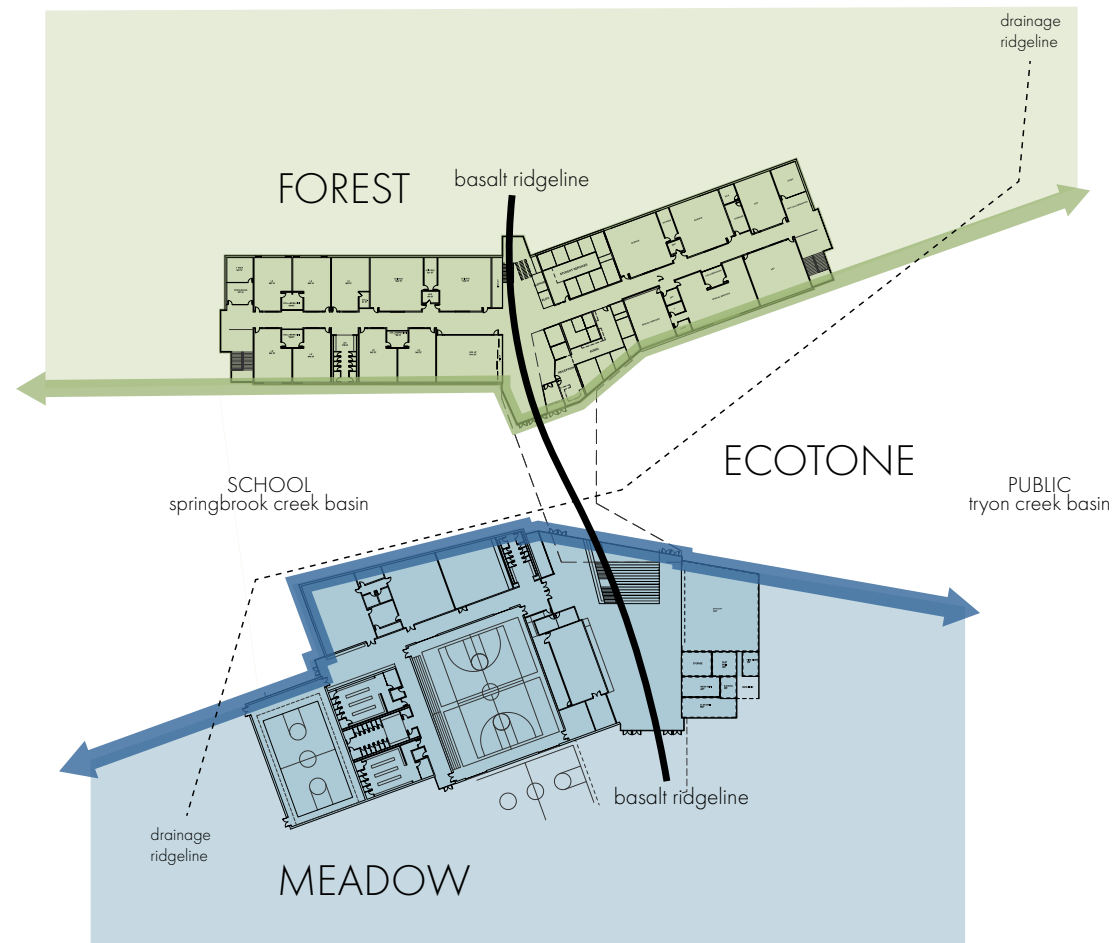
Add a safe bike parking spot." - Dan

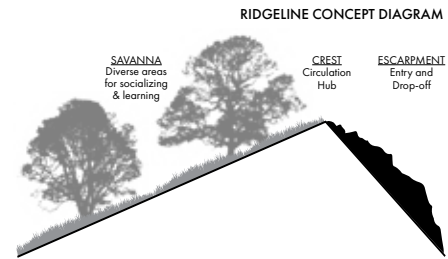
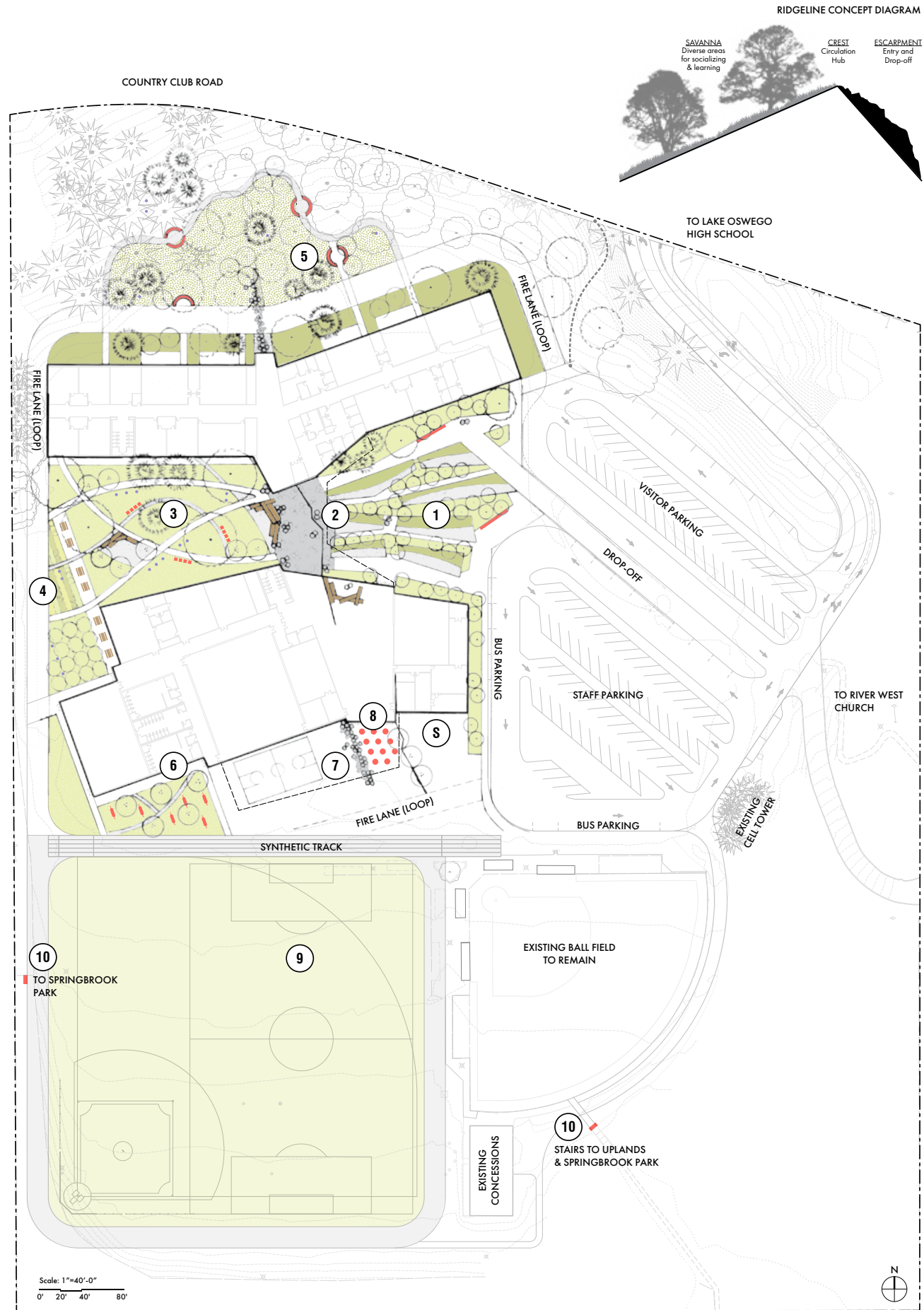
more art!! -natalie

Lobby is open and full of lighting.

Lobby is open and full of lighting." -Kaj

School mascot statue/ social space."



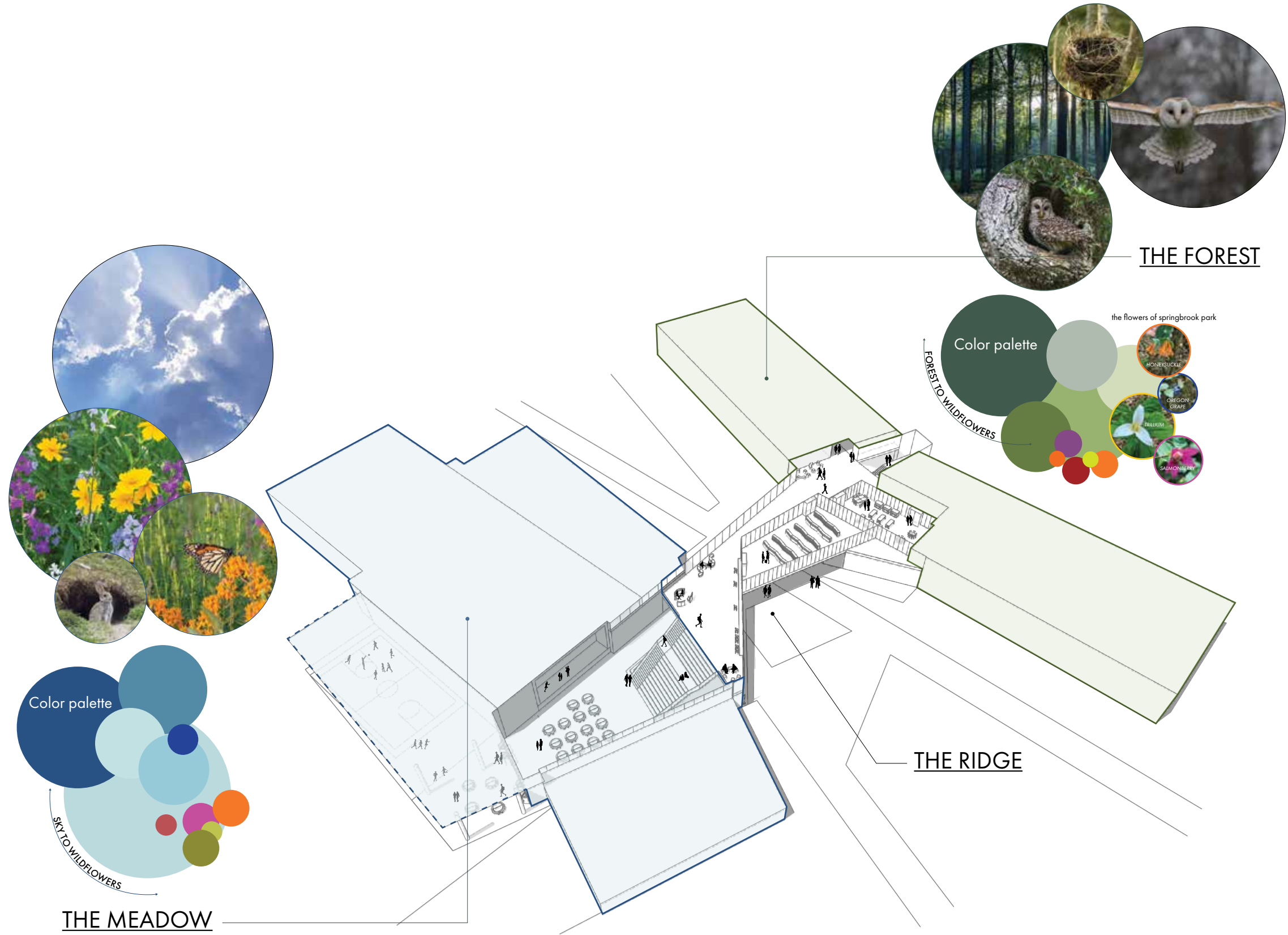


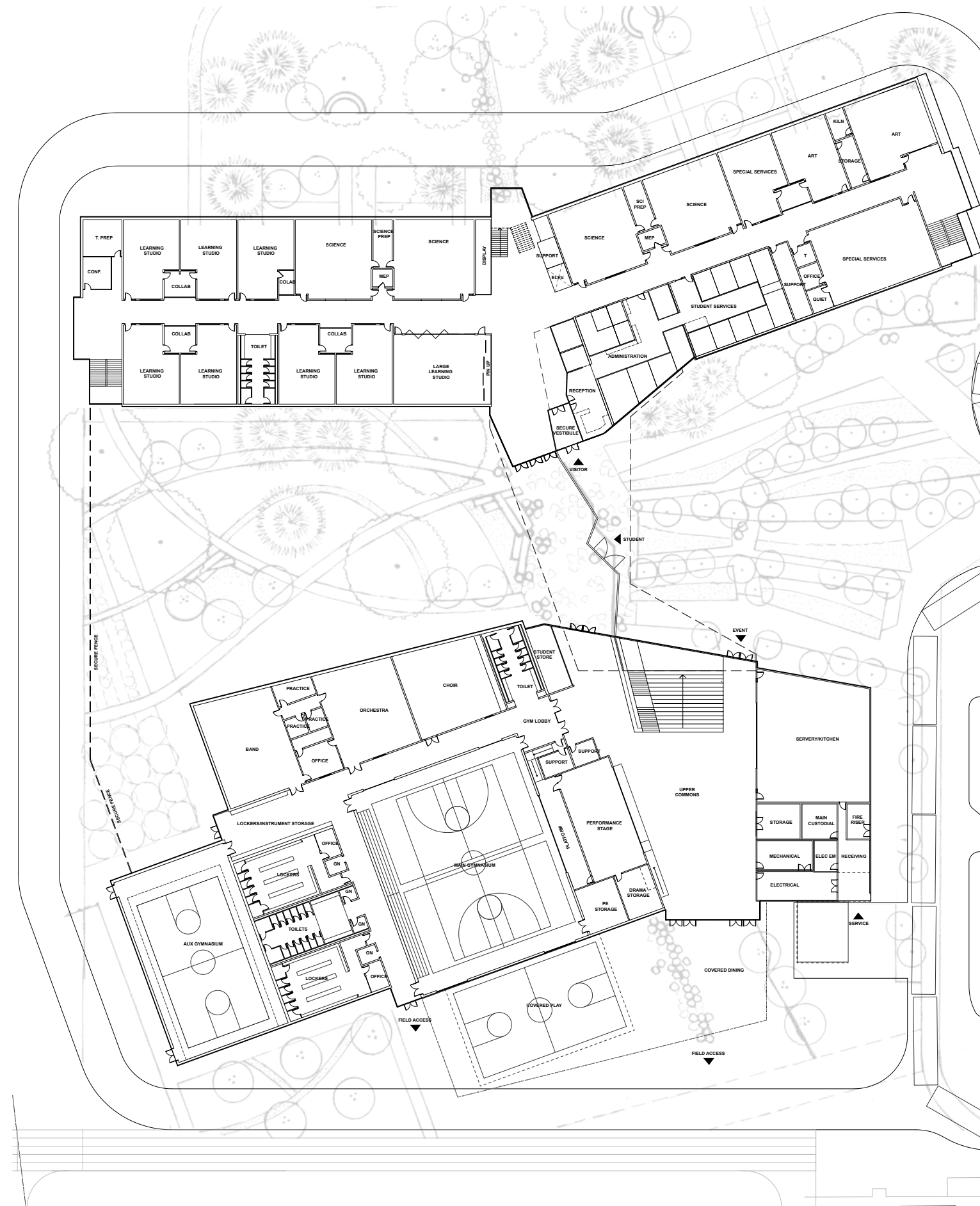
LAKE OSWEGO MIDDLE SCHOOL
CONCEPT SITE DESIGN

<p>1 ENTRY RIDGE ESCARPMENT</p>	<p>CHARACTER OF PLACE</p> <ul style="list-style-type: none"> Rocky, exposed accent with wet seeps Emergent landscape: pioneer species, changing Artful school entry, welcoming Evocative of historic mining patterns Small rivulets of run-off water along pathways Small, densely planted trees, emergent meadow, and wet-loving coniferous trees
<p>2 BASALT RIDGELINE CREST</p>	<p>CHARACTER OF PLACE</p> <ul style="list-style-type: none"> Rock outcrop ridgeline screen Courtyard connection, entry, threshold Prospect Celebratory
<p>3 OAK SAVANNA</p>	<p>CHARACTER OF PLACE</p> <ul style="list-style-type: none"> Leeward: sheltered, dry Legacy landscapes: big trees, open spaces Places to linger People perches Ecological niches Soft materials, soft paths Seating nests & Adirondack chairs Oregon oaks, ponderosa pines, small flowering trees, and meadow
<p>4 GARDENS OF PRODUCTION</p>	<p>CHARACTER OF PLACE</p> <ul style="list-style-type: none"> Student stewardship Learning landscapes, outdoor classrooms Restoration nursery for Springbrook Park Fruit orchard
<p>5 LEARNING LOOP</p>	<p>CHARACTER OF PLACE</p> <ul style="list-style-type: none"> Forest restoration Learning landscapes, outdoor classrooms Inspire curiosity Prompt discovery Douglas-fir, western hemlock, big leaf maple, vine maple, ferns, and Oregon grape
<p>6 HAMMOCK GROVE</p>	<p>CHARACTER OF PLACE</p> <ul style="list-style-type: none"> Swinging, socializing Refuge Small flowering trees and meadow
<p>7 RIDGELINE PLAY</p>	<p>CHARACTER OF PLACE</p> <ul style="list-style-type: none"> Extension of basalt ridgeline Linear rope courses Climbing, balancing, sitting, socializing Covered play Group sports Small pioneer trees

LEGEND

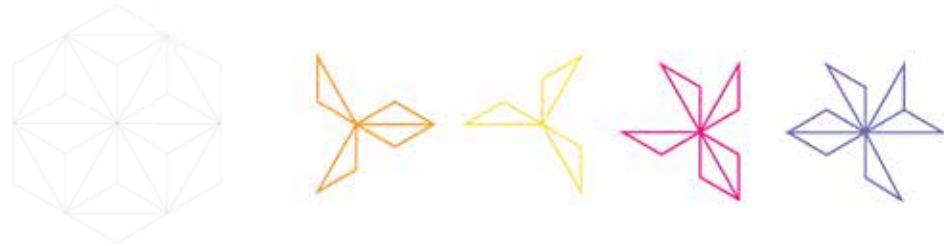
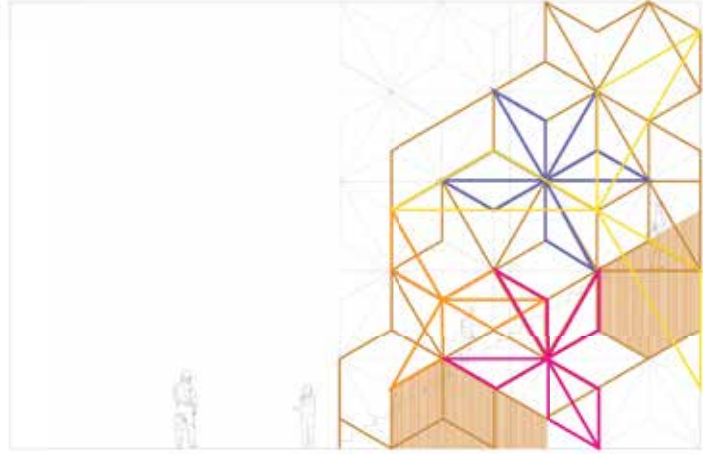
- | | | |
|---------------------------------|--------------------------|---|
| 1 Entry Ridge Escarpment | 5 Learning Loop | 9 <u>Multi-use Athletic Field</u>
Baseball
U-14 Soccer
Shot-put
Long & Triple Jump |
| 2 Basalt Ridgeline Crest | 6 Hammock Grove | 10 Celebrate Springbrook Park |
| 3 Oak Savanna | 7 Ridgeline Play | S Service Area |
| 4 Gardens of Production | 8 Outdoor Commons | |







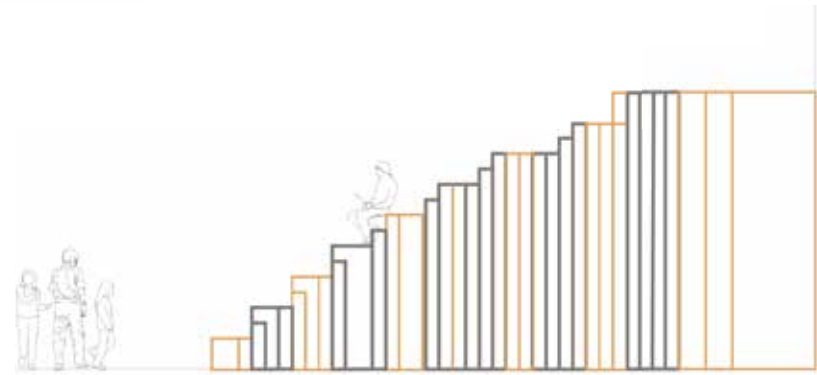
meadow
large scale/ color



Precedent Images



ridgeline
dimensional/ material



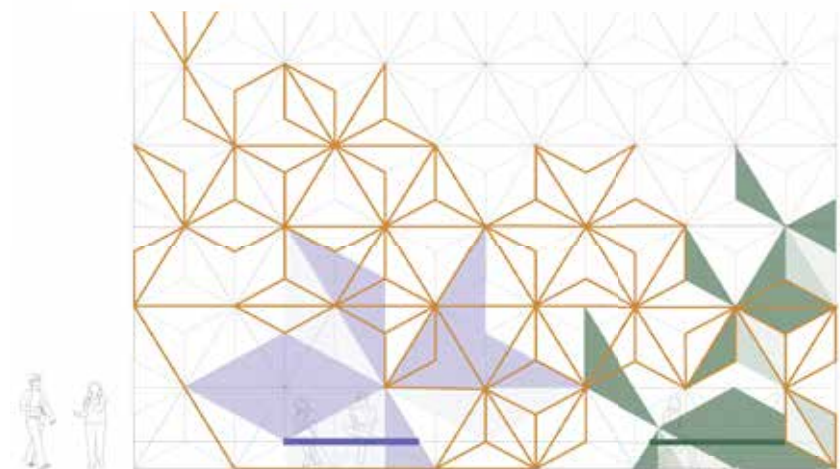
Precedent Images



ecotone
form/ transition



forest
positive/ negative space



Precedent Images



Precedent Images



