

The Design Narrative

As a language of architecture takes shape for a Reimagined River Grove, this design narrative will be the foundational underpinning for design decisions. Inspiration for this narrative came from conversations with River Grove teachers, students, and experiences on site.

We are reminded of the great impact the physical environment has on our wellbeing as we welcome a community of students back into school buildings after almost a year and a half spent in comprehensive and hybrid distance learning models due to the COVID-19 pandemic. Children can't learn until they feel safe. Safety takes many forms, but the most elementary of these is the nest.

"A 'safe nest' is something that each individual needs as much as each group. Without this there can be no collaboration with others. There can be no adventure without a home-base to return to."

-Herman Herzberger in a lecture on the Montessori School at Delft, Netherlands

When walking through the River Grove site, moments of being nestled stand out: "Safe paths" pull walkers into the dense vegetation and away from the neighborhood roads, low-roofed covered walkways surrounded by outdoor artwork link one building to the next, tall firs protectively tower over a playground, overgrown brush creates a low canopy and protected clearing below. There are moments of discovery and moments for quiet contemplation.

We are making a place where children learn about who they are as learners. Where they understand their needs, invest in their learning, and advocate for themselves. Some thrive facing a window, others gravitate to a wall or shielded view. They need to own their space by choosing where to sit and with whom, and how to work: standing, sitting on the floor, kneeling, even under their desk. It is our duty as the design team to create a place where students feel embraced, supported, and nurtured by their environment. We can do this through careful manipulation of light and shadow, solid and void, sound and silence.

Project Brief

The New River Grove Elementary School for the Lake Oswego School District will be constructed on the same site as the existing school. This site is approximately 9.26 acres in the City of Lake Oswego. Construction is slated to begin June 2022 and completed for school to open Fall 2023. Students and staff will be moved to the Uplands Elementary School swing site for the 2022/23 school year. The district is currently planning for this project to be competitively bid within a pre-selected pool of bidders.

The new River Grove building is approximately 79,800sf and includes single story and two-story components.

The scope of work includes demolition and abatement of the existing 1968 school building which is approximately 58,000sf, with an additional 9,600sf of portable classroom buildings.

Site Programming includes:

- Parking for approximately 70 stalls
- Pickup and drop-off area for parents
- Pickup and drop-off area for approximately 6 busses
- A service yard for kitchen deliveries
- Offsite improvements as determined by the City of Lake Oswego
- Stormwater treatment and detention on site
- Elementary-level play field for soccer and PE activities
- Hard-surface and soft-surface playground areas with play structure adjacent to a covered play area
- Large garden bed area adjacent to an outdoor covered classroom area



RIVER GROVE ELEMENTARY SCHOOL REIMAGINED
 LAKE OSWEGO SCHOOL DISTRICT
 DECEMBER, 2021

SITE PLAN

SCALE 1" = 30'



NORTH ELEVATION



WEST ELEVATION



SOUTH ELEVATION



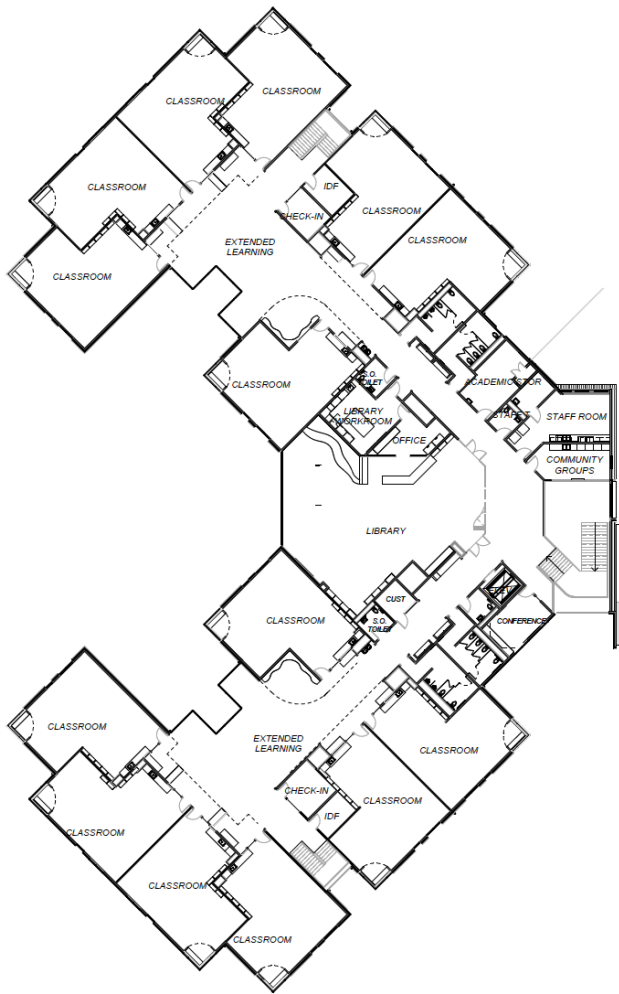
EAST ELEVATION



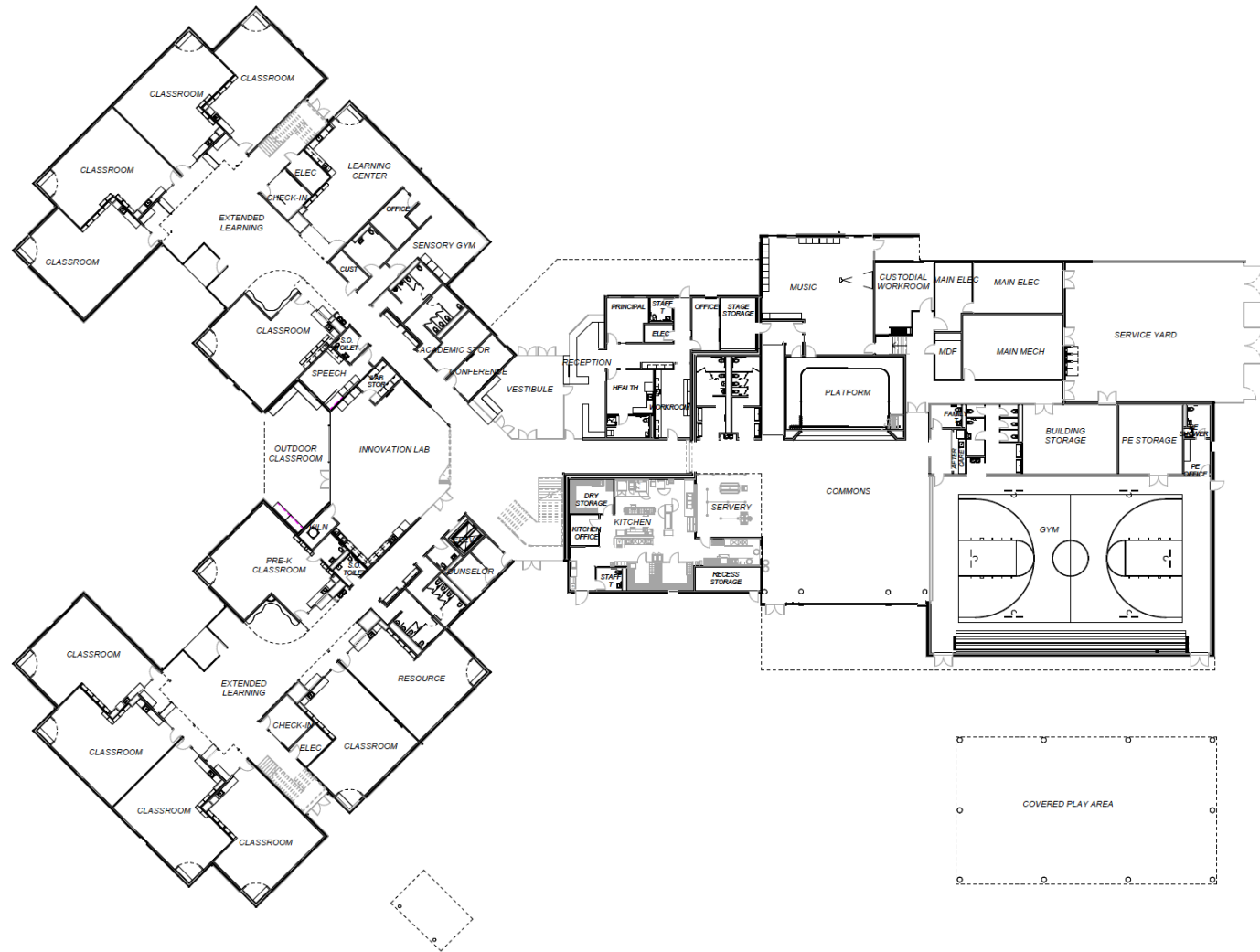
RIVER GROVE ELEMENTARY SCHOOL REIMAGINED
LAKE OSWEGO SCHOOL DISTRICT
DECEMBER, 2021

EXTERIOR ELEVATIONS

SCALE 1/16" = 1'



LEVEL 2 FLOOR PLAN 2
SCALE 1/16" = 1'-0"



LEVEL 1 FLOOR PLAN 1
SCALE 1/16" = 1'-0"



RIVER GROVE ELEMENTARY SCHOOL REIMAGINED
LAKE OSWEGO SCHOOL DISTRICT
DECEMBER, 2021

OVERALL FLOOR PLANS
SCALE 1/16" = 1'



Lake Oswego School District

2455 Country Club Road

P.O. Box 70

Lake Oswego, OR 97034-0070

503-534-2000

River Grove Elementary School: Reconstruction

Please contact Beth Starr with any written comments or questions twenty-four hours prior to the February 2, 2022 online meeting either by e-mail or USPS.

Contact Information:

Beth.starr@loswego.k12.or.us

Palisades World Language School
1500 Greentree Avenue
Lake Oswego, OR 97034
Attn: Beth Starr, Bond Department

Thank you,
Beth Starr
Project Coordinator
Lake Oswego School District