

River Grove Elementary School Reimagined

The Design Story

February 2021



A COLLABORATIVE DESIGN PROCESS

THE FIRST CONVERSATIONS: WINTER, 2020



WHAT WE HEARD: RIVER GROVE STUDENTS *BEFORE DESIGN STARTED*

"My favorite place is **the library because it is peaceful**. It makes me very calm."

"At home I like to sit **in my closet with a flashlight and clipboard**, so no one disturbs me."

"I think it would be good for us to have a place for **creativity and feelings** that isn't controlled by adults."

"I like to go outside **under the trees**"

"I like the corner in my classroom with the comfy tiny blue chairs...**I feel hidden from view.**"

"**I avoid the bathrooms.** There isn't enough privacy it is unsettling."

"I like the iLAB because you get to **be creative and express yourself.**"

I like to make **slideshows.**

WHAT WE HEARD: RIVER GROVE TEACHERS **BEFORE DESIGN STARTED**

“I get focused work done in my classroom **at a table where I can spread everything out.**”

There is limited **quiet space** to build relationships with students.

“The portables have no space to **pull out small groups.** The walkways are crowded. We are a **disconnected** school.”

“We collaborate **in the hallway**”

“The Pods are isolating, they **hinder collaboration.**”

“I go to the **bathroom to recharge** and lock the door.”

WHAT WE HEARD: DISTRICT LEADERS ***BEFORE DESIGN STARTED***

All students should feel welcome. Our schools reflect our values.
Universal design is a priority.

School environments need to include places where a student can **regulate their emotional condition.**
“Regulate, Relate, Reason”

Common spaces should allow for free and unrestricted movement.
Students report **feeling “trapped” in long hallways.**

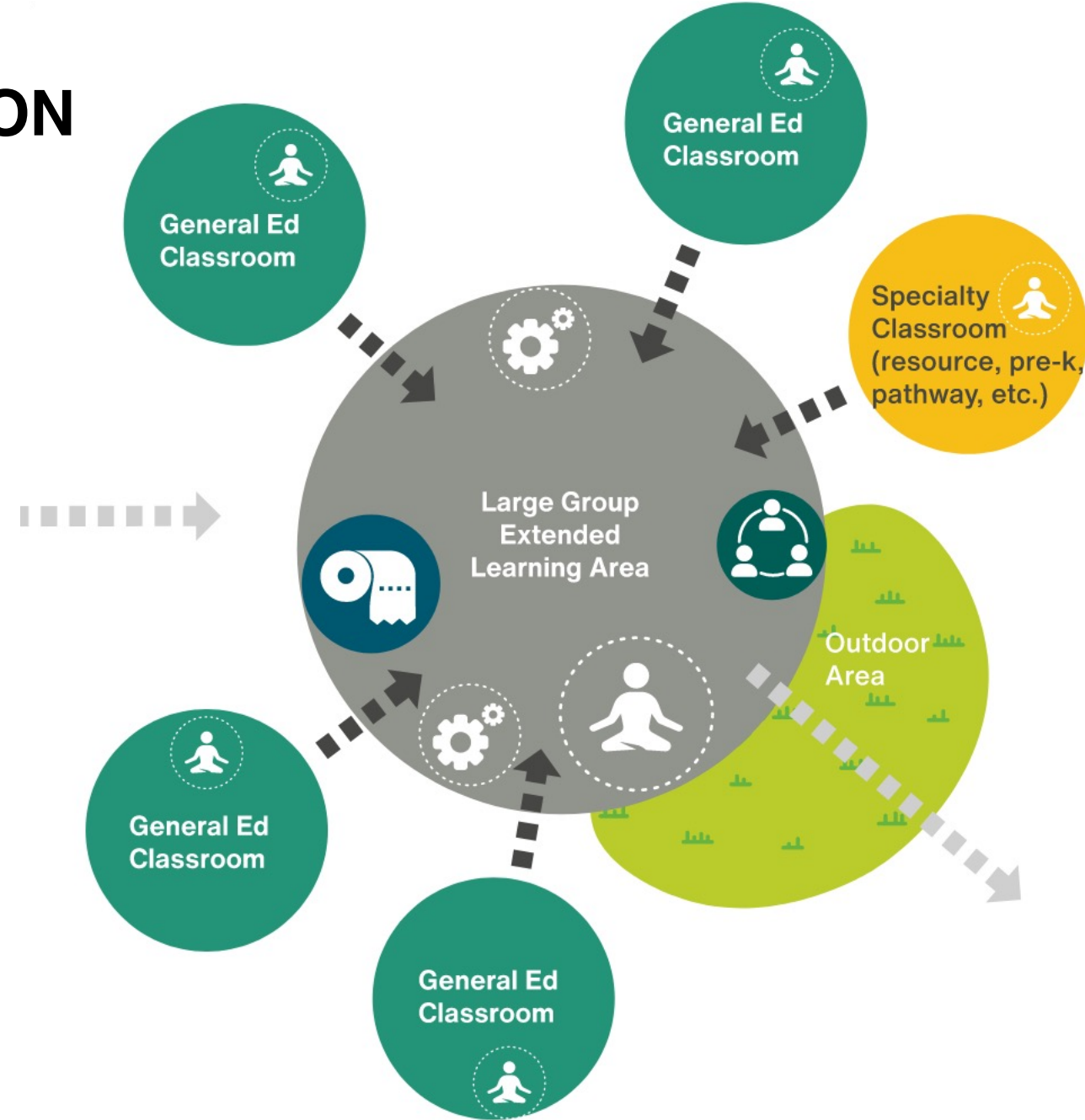
Many students have **high sensitivity to sound.** The negative effects of poor classroom acoustics is especially seen in the younger grades.

Biophilic design should be embraced to help students **connect to nature** and impact their emotional wellbeing.

THE EDUCATIONAL SPECIFICATION

The Educational Specification describes each space and its relationship to others.

- Direct **outdoor access**,
- Places for **student-owned quiet zones** in classrooms and shared areas,
- Small group **check-in rooms**
- **Fully integrated** specialty classrooms



THE EDUCATIONAL SPECIFICATION

The Educational Specification culminates in a list of rooms needed to support the programs and functions expressed by students, teachers, and staff.

- Additional **counseling** spaces
- A larger **library** with areas for large and small groups
- **Specialty spaces** needed to support all students.

CLASSROOM NEIGHBORHOODS (6)				
Private Small Group Room	6	120	720	
Open Small Group Zone	6	200	1,200	
Extended Learning Area	6	750	4,500	
Classrooms K-5	24	950	22,800	24
Pre-K Classroom	1	950	950	
SUBTOTAL			30,170	

SPECIALIST/RESOURCE				
DELTA/Pathways Classroom	1	950	950	1
DELTA/Pathways Restroom	1	175	175	
Conference Room	1	200	200	
DELTA/Pathways Office	1	150	150	
OT/PT and Mobility Room	1	550	550	
Speech Pathologist	1	180	180	
Title 1 Resource Room	1	950	980	
Counselor Office w/adjacent waiting area	2	250	500	
SUBTOTAL			3,655	

ARTS AND MAKING				
Music	1	1,200	1,200	
Innovation Lab	1	1,200	1,200	
Innovation Lab Storage	1	200	200	
Innovation Lab Kiln Room	1	100	100	
Stage	1	1,000	1,000	
Stage Storage	1	200	200	
SUBTOTAL			3,900	

RESEARCH AND INQUIRY				
Library	1	2,500	2,500	
Library Workroom	1	180	180	
Library Office	1	100	100	
Library Conference Room/Small Group	1	200	200	
SUBTOTAL			2,980	

RIVER GROVE – DESIGN BEGINS. STUDENT FEEDBACK



RIVER GROVE – DESIGN BEGINS. STUDENT FEEDBACK

Overwhelmingly the most highly rated images in the survey:



Manassas Park Elementary, VMDO Architects



Trillium Creek Primary, IBI Group Architects

“I love the large windows with views of trees.”

“I like having a comfortable place to read by myself.”

“Not too crowded. Not too open.”

“Different types of seating that I can choose what I want.”

RIVER GROVE – DESIGN BEGINS. STUDENT FEEDBACK

Design advice from the students of River Grove:



RIVER GROVE – DESIGN BEGINS. DESIGN ADVISORY TEAM



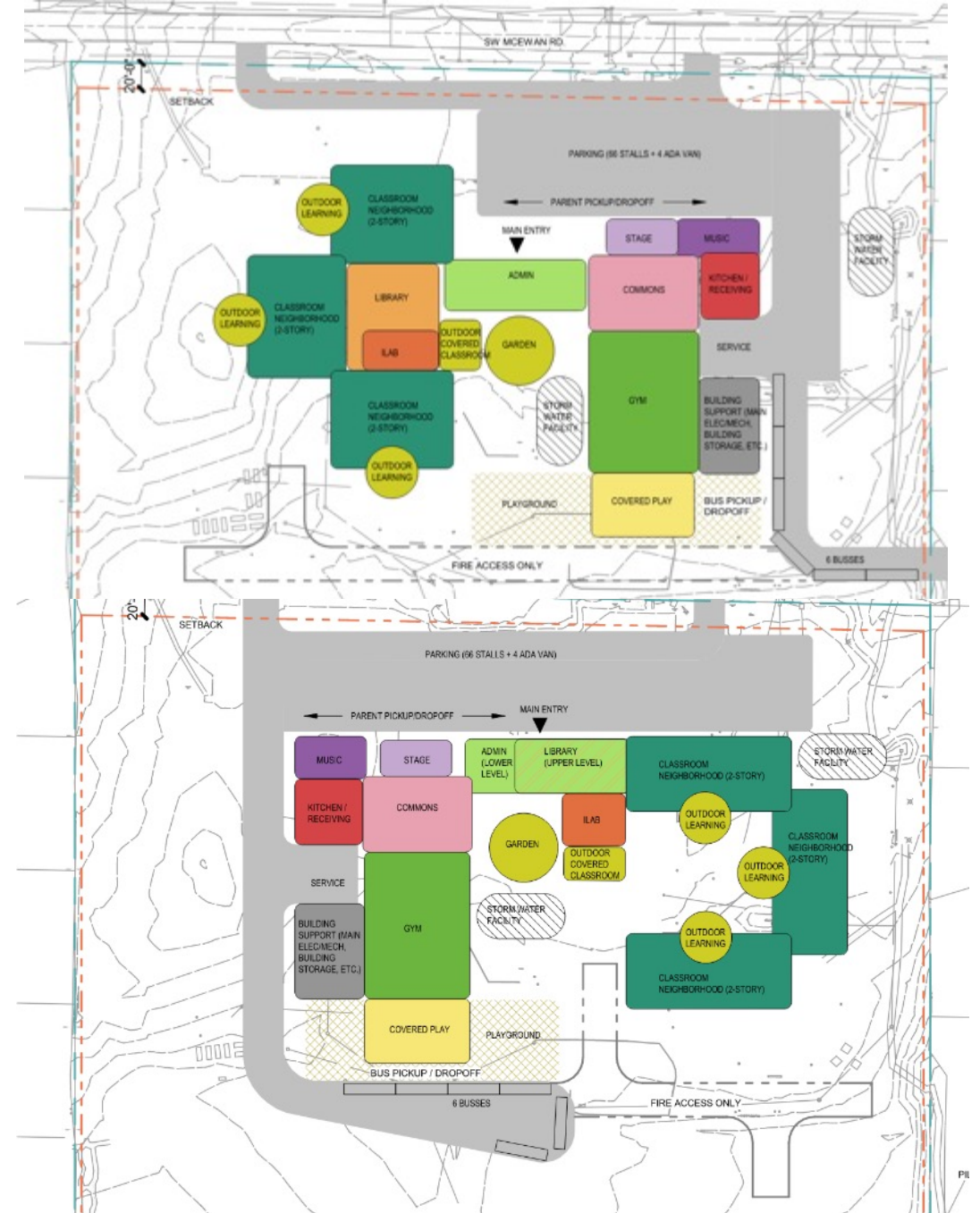
- **School Tours**
- **Design Input & Critique**

Vose Elementary School, Beaverton School District, DLR Group Architects

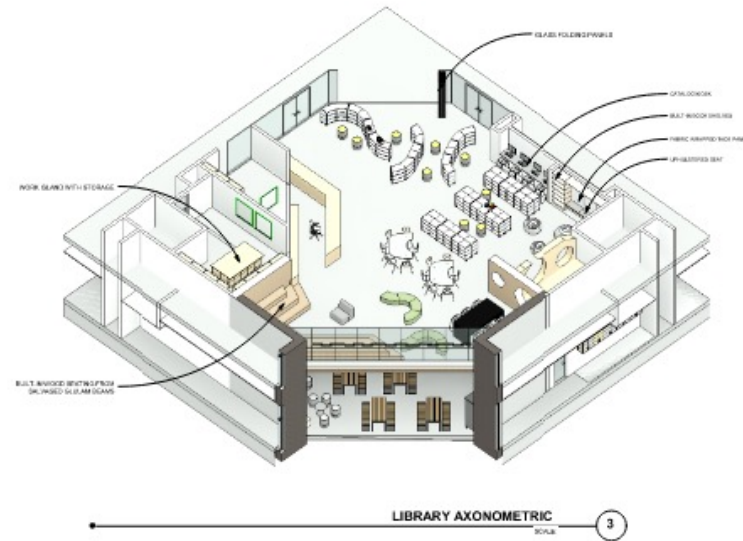
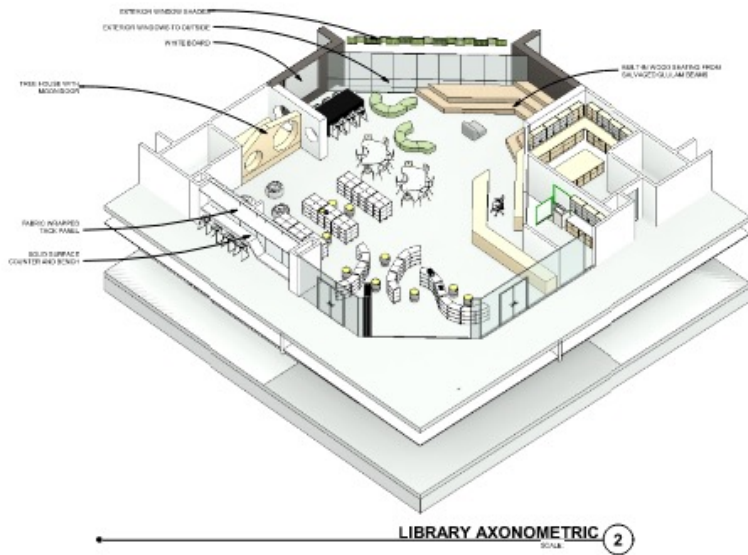
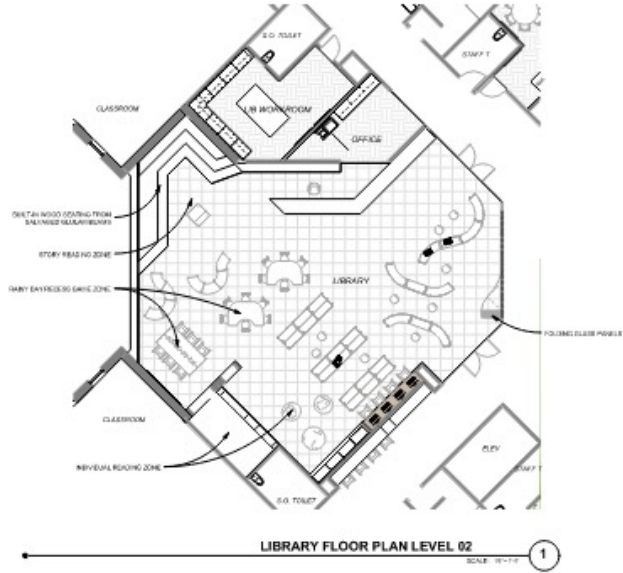
RIVER GROVE – DESIGN BEGINS.

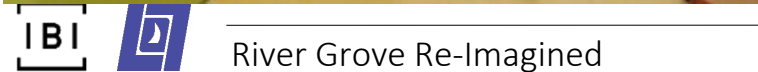
DESIGN ADVISORY TEAM

- **No long hallways**, we want a connected school.
- **Access to the outdoors** is key – for learning and play.
- The **Library** should feel connected but also a quiet refuge for kids.
- The **iLAB** needs to be in the center and up front, showing our commitment to STEM.



RIVER GROVE – DESIGN DEVELOPS. FOCUS GROUP SPECIAL





THE CURRENT DESIGN

RIVER GROVE – SITE PLAN



SW MCEWAN RD.

PARENT PICKUP & DROPOFF

MAIN ENTRY

LEARNING
COURTYARD

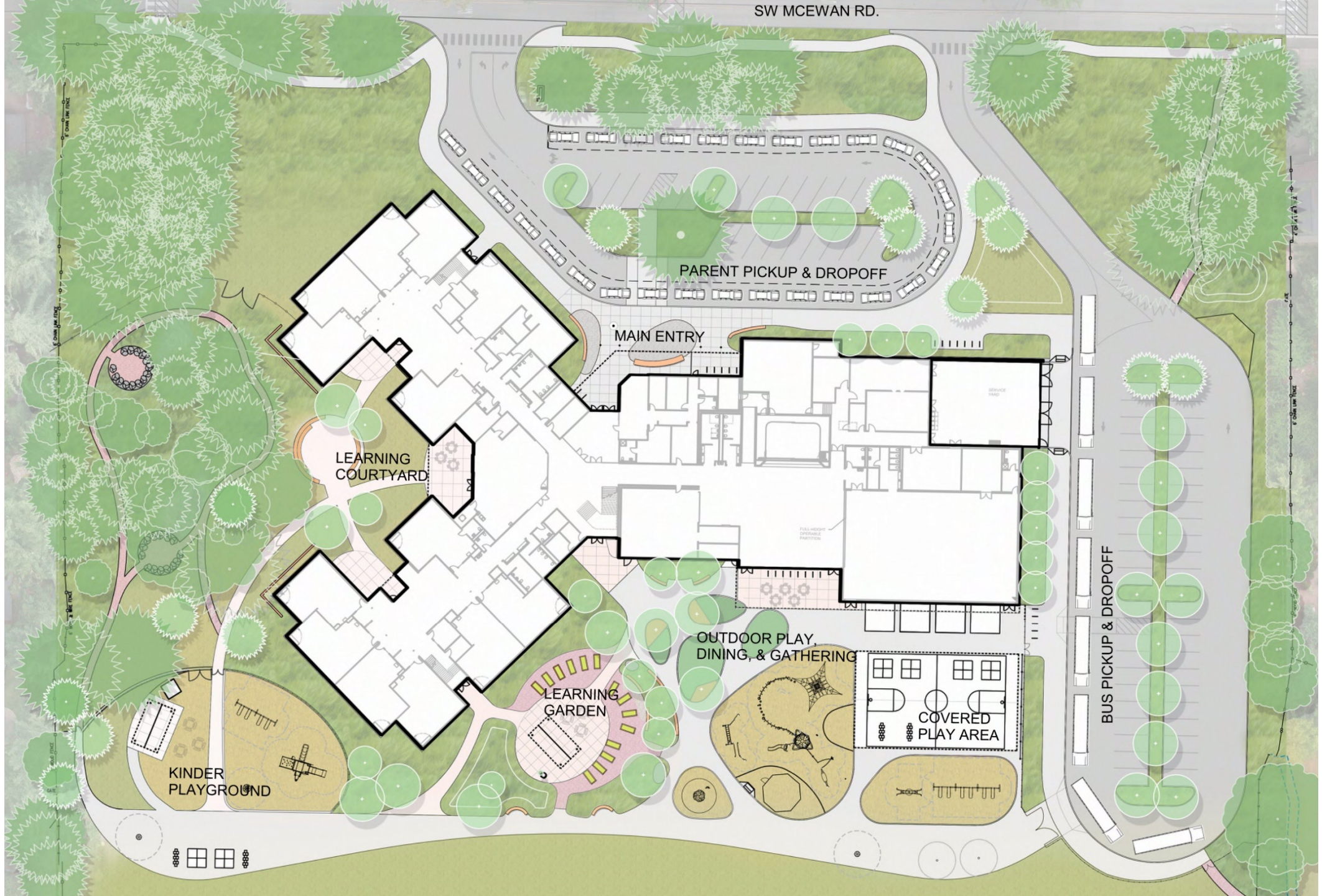
OUTDOOR PLAY,
DINING, & GATHERING

LEARNING
GARDEN

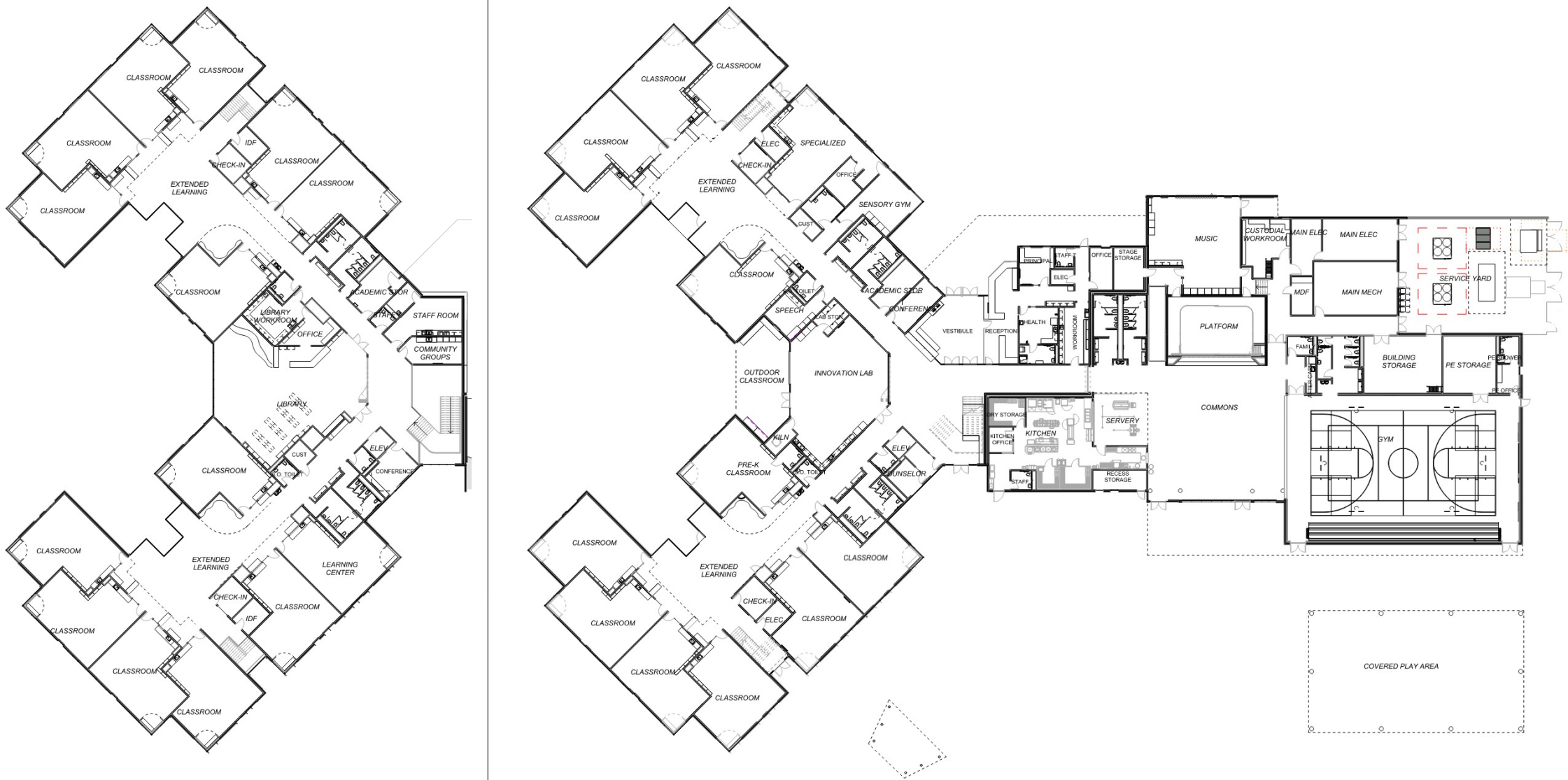
COVERED
PLAY AREA

KINDER
PLAYGROUND

BUS PICKUP & DROPOFF



RIVER GROVE – FLOOR PLAN



BUILDING FOOTPRINT ANALYSIS

