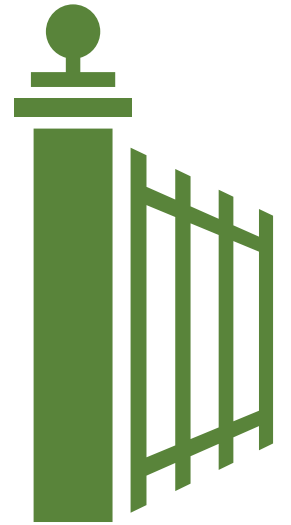




COLLEGE POSSIBLE

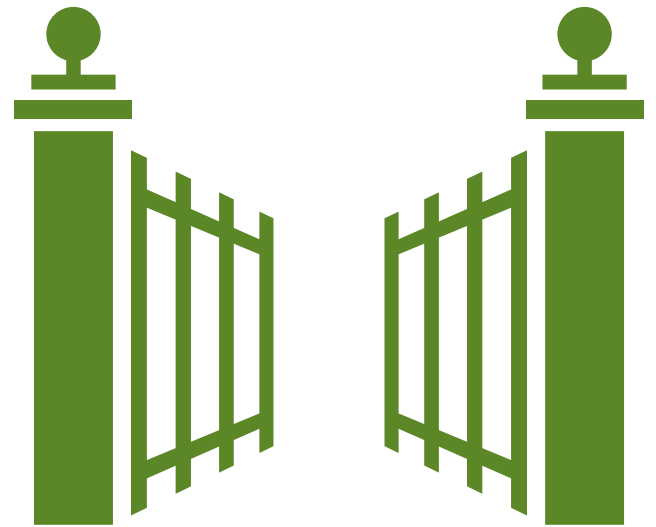


Open a world...



“[College Possible] helps promising young people from low-income families attend college. The vast majority stay in college and earn their degrees.”

- President Barack Obama
Remarks on innovative nonprofits, June 2009



of opportunity.

COLLEGE ENROLLMENT

Since College Possible's founding, thousands of the program's students have enrolled at nearly 300 different colleges and universities nationwide, including:

Alverno College	Howard University	Ripon College
Augsburg College	Johns Hopkins University	Smith College
Beloit College	Kalamazoo College	St. Cloud State University
Bethel University	Lawrence University	St. John's University
Brigham Young University	Loyola University Chicago	St. Norbert College
Brown University	Macalester College	St. Olaf College
Cardinal Stritch University	Marquette University	Tufts University
Carleton College	Massachusetts Institute of Technology	Tulane University
Carroll University	Midland University	U.S. Air Force Academy
Clark University of Atlanta	Milwaukee School of Engineering	University of Colorado
College of St. Benedict	Minnesota State University, Mankato	University of Minnesota
Concordia College	Morehouse College	University of Nebraska
Dartmouth College	Mount Mary College	University of Wisconsin
Grinnell College	North Dakota State University	Wellesley College
Gustavus Adolphus College	Northern Michigan University	Whitman College
Hamilton College	Princeton University	Wayne State University



MISSION

College Possible is making college admission and success possible for low-income students through an intensive curriculum of coaching and support. College Possible's services include:

- 1 academic support through ACT/SAT test preparation
- 2 college application assistance
- 3 financial aid consulting
- 4 guidance in the college transition
- 5 support toward college degree completion

QUICK FACTS

Founded: September 2000 as Admission Possible

Description: 501(c)(3) nonprofit

Cities: Minnesota's Twin Cities; Milwaukee, Wisconsin; Omaha, Nebraska and Portland, Oregon

Enrollment: Nearly 15,000 students (3,000 in high school program, 4,500 in college program, 7,500 in college prep talks)

Service Fees: Free

Affiliations: America Forward, Ashoka, College Board, National Association for College Admission Counseling, National College Access Network, New Profit Inc., Voices for National Service

REQUIREMENTS

College Possible students must meet the following requirements:

- be income eligible
- commit to intensive program
- have GPA of 2.0 or higher

FINANCIAL AID

Though not a scholarship-granting organization, College Possible helps every participating student apply for and secure financial aid. **In 2012-13, College Possible seniors were awarded more than \$6.2 million in scholarships.**

RESULTS

College Possible students have shown an average ACT score improvement of 22%.

In 2012-13, the average ACT score of College Possible students increased from 15.2 to 18.5, improving college admission opportunities and demonstrating academic preparation for college.

Overall, 98% of College Possible students have earned admission to college.

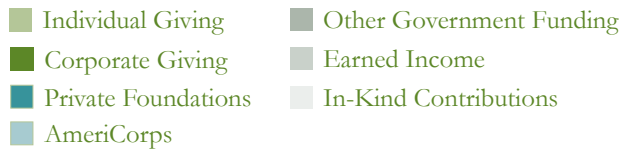
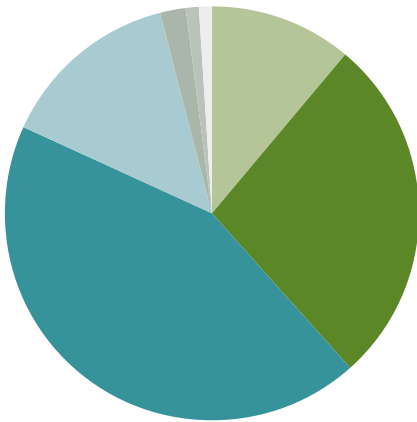
In 2012-13, 98% of College Possible's 999 high school seniors earned admission to college. A 2013 Harvard study using a rigorous, randomized controlled trial validated College Possible's significant impact on 4-year college enrollment.

College Possible students are graduating at five times the rate of their low-income peers.

College Possible's six year college graduation rate is 57%. Nationally, only 11% of low-income students who enroll in college graduate.

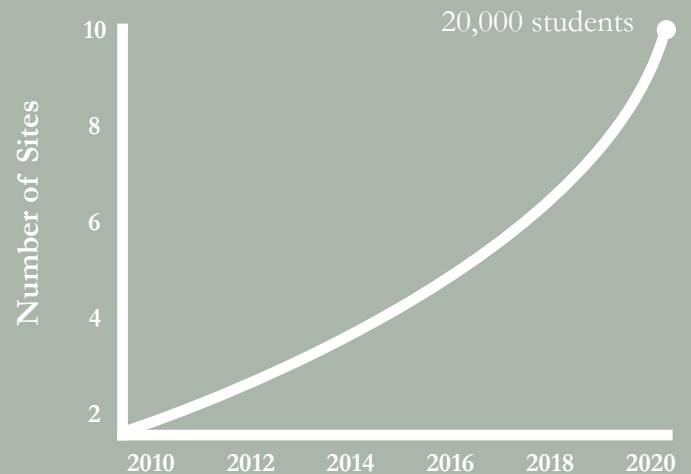
FUNDING

College Possible is grateful for the support of all its philanthropic partners. More than 80% of annual contributions come from private funders.



GROWTH

Since 2000, College Possible has grown from serving 35 students in one city to serving 15,000 students in four metro areas in 2013. Based on an extensive research and planning process, College Possible will grow to serve 20,000 students annually in 10 cities across the country by 2020.



POWER OF SERVICE

College Possible's Service Corps is made up of over 130 service-minded recent college graduates who dedicate a year of their life to directly supporting high school and college students or helping build organizational capacity.



HIGH SCHOOL STUDENTS

During high school, College Possible students receive at least 320 hours of direct support over two years through after-school programming. College Possible coaches lead 30-40 low-income students through the College Possible curriculum.

Junior Year:

- orientation to the college application process
- ACT/SAT test preparation
- campus visits
- summer enrichment opportunities

Senior Year:

- college essay and application assistance
- campus visits
- financial aid and scholarship application support
- college selection and transition advising

COLLEGE STUDENTS

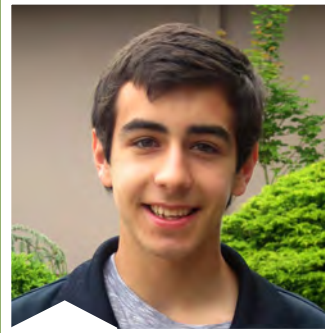
After completing high school, College Possible students receive a continuum of support through group and one-on-one assistance as they transition to college and pursue a degree. Services include:

- connecting students with existing campus resources
- building a network of support among college students
- providing financial aid and scholarship assistance

COLLEGE PREP TALKS

Coaches, with the support of College Possible seniors, lead college prep talks for middle and early high school students at College Possible partner high schools and other community partner agencies. This interactive curriculum outlines the benefits of college, how to prepare for the admissions process and where to locate resources.

STUDENT



Sergio Sanchez
College Possible
Portland student,
Gresham High
School Class of
2015

“What first got my attention about College Possible was that 98% of kids who joined got into college. By the time I’m a senior I want to look back at high school and know I took advantage of everything.”

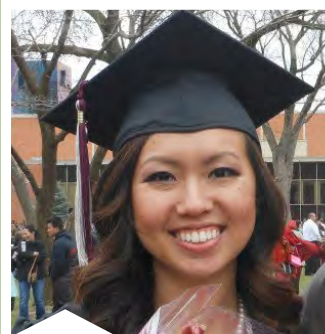
COACH



Courtney Steggall
College Possible
Milwaukee
coach, 2012-14

“Seeing all the hard work pay off for students through ACT score increases and college acceptances is the most rewarding part of the program. Not only are students improving their own future, but they’re improving the future of their family and community.”

ALUMNA



Maya Vue
Augsburg
College Class of
2013, College
Possible Twin
Cities alumna

“As a first-generation student, there’s always going to be struggles you face. Without the program, I would not be here. All my coaches have been so supportive, and that’s why I’m so successful.”

TWIN CITIES

20 PARTNER SCHOOLS

Anoka-Hennepin Schools

Champlin Park High School, Coon Rapids High School

Bloomington Kennedy High School

Columbia Heights High School

Coon Rapids High School

Minneapolis Public Schools

Edison High School, Patrick Henry High School, Roosevelt High School

Park Center Senior High

Robbinsdale Area Schools

Robbinsdale Armstrong High School, Robbinsdale Cooper High School

St. Louis Park Senior High School

Saint Paul Public Schools

Central Senior High School, Como Park Senior High School, Harding Senior High, Highland Park Senior High School, Humboldt Secondary School, Johnson Senior High School, Washington Technology Magnet School

Charter Schools

Community of Peace Academy, Ubah Medical Academy



CONTACT US

Sara Dziuk,
Executive Director

College Possible
540 Fairview Ave N,
Suite 201
St. Paul, MN 55104

Phone: 651.917.3525
Fax: 651.917.3522

MSPInfo@
CollegePossible.org
www.CollegePossible.org

Established 2000

STUDENT PROFILE

College Possible Twin Cities serves more than 10,000 students annually. The 1,620 students currently in its high school program reported an average family income of less than \$25,000. The average GPA of students in the program is 3.0, and 91% are students of color. The racial and ethnic demographics are as follows:

29% Hmong	11% Latino/a
17% African American	9% White
13% African Immigrant	8% Asian (Non-Hmong)
11% Biracial/Multiracial/ Unspecified	1% American Indian/ Alaska Native

AWARDS

Premier Partner
Generation Next

Nonprofit Excellence Award
Minnesota Council of
Nonprofits & MAP for
Nonprofits

Four Stars
Charities Review Council

TWIN CITIES BOARD

Kathleen MacLennan - Chair
*Communications Advisor for
Nonprofit Organizations*

Tim Carter
Piper Jaffray Companies

Cory Gunderson
Donaldson Company Inc.

Denise Rahne
Robins Kaplan, Miller and Ciresi

Willy Tully
*City of St. Paul Mayor's Office,
College Possible Former Corps*

Stephanie Lilak - Vice Chair
General Mills

Regina Cho Getnick
ObGyn Specialists, P.A.

Russell Mosley
U.S. Bank

Meg Rodriguez
Community Volunteer

Maya Vue
Travelers, College Possible Alumna

Jean Adams
The Minneapolis Foundation

Charles Grossman
Breck School

Barry Nordstrand
Solutran

Patti Soskin
Yum! Kitchen and Bakery

Priscilla Weah
College Possible Student, St. Kate's

