

# Food Allergy Flow Chart

For Activities

In order for a team to eat on any District vehicle that is used to transport students, the **Coach** must complete: **Coaches Acceptance of Responsibility and Liability Form**. A copy must be on file in the Activities Department and a copy will be forwarded to the Transportation Supervisor prior to any food being consumed on any District vehicle that is used to transport students.

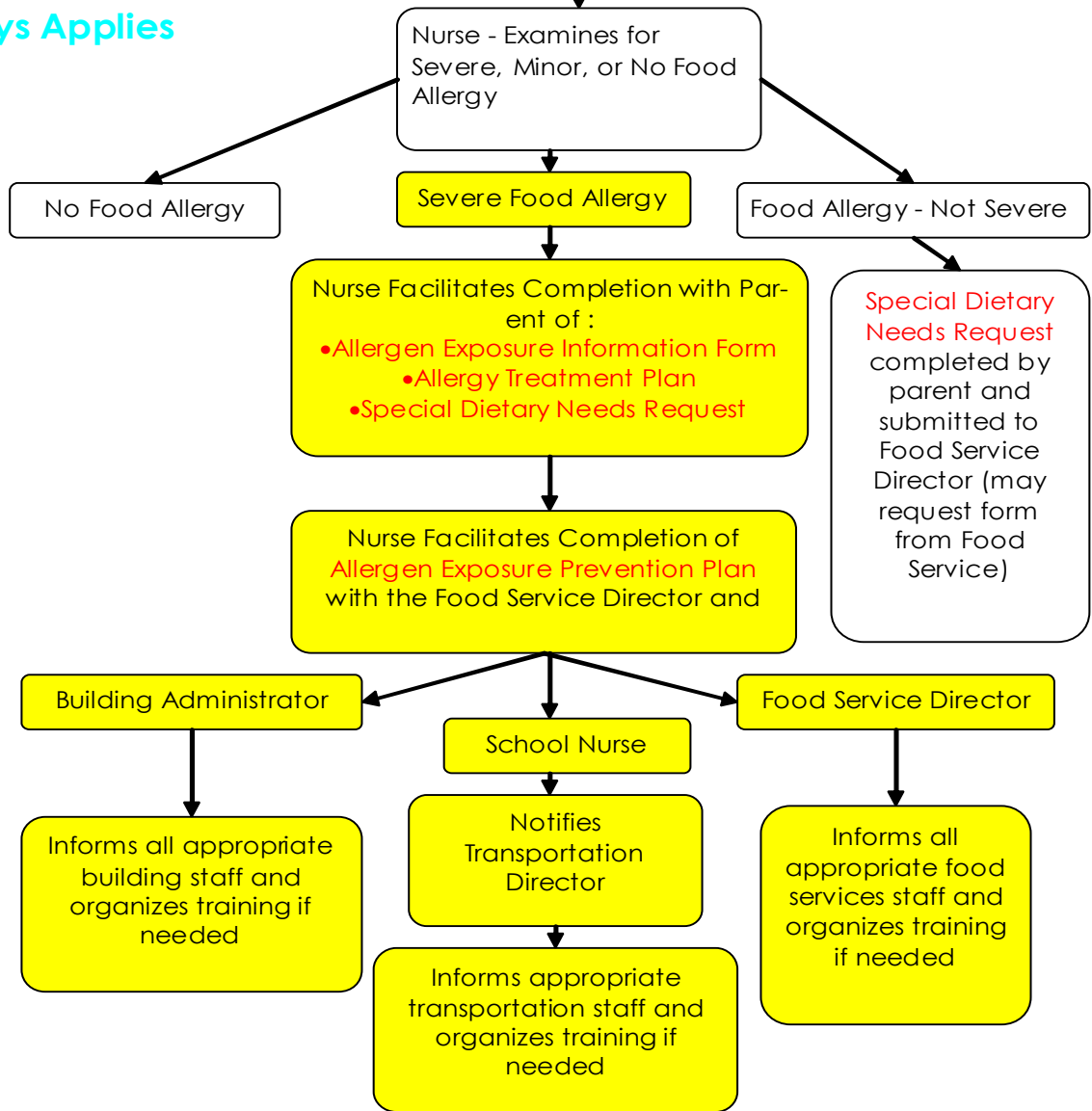
**Current Health Concerns Form** completed at Registration

Forms Available to Parents at Registration:

- Student Health Concerns Brochure
- Special Dietary Needs Request
- Allergen Exposure Information
- Allergy Treatment Plan
- Medication Request/ Consent

**Immediately Sent to School Nurse**

## Standard Procedure - Always Applies



Allergic Reaction Incident:  
Documented on  
**Accident/Incident Form**