



# COOPERATIVE STRATEGIES

COMPLETE FINANCIAL & DEMOGRAPHIC PLANNING FOR EDUCATION

## SAN PASQUAL UNION SCHOOL DISTRICT

TRUSTEE AREA PROCESS

SEPTEMBER 10, 2019



# TYPES OF ELECTIONS

## AT-LARGE ELECTIONS

Candidates must reside within the District's boundaries and are elected by all the voters who reside in the District's boundaries (Education Code Section 5030(a)). This is the method of election currently used by SPUSD.

## FROM-TRUSTEE AREA ELECTIONS

Candidates must reside in specific geographic areas within the District's boundaries called "Trustee Areas" but are elected by all the voters who reside in the District's boundaries (Education Code Section 5030(c)).

## BY-TRUSTEE AREA ELECTIONS

Candidates must reside in specific Trustee Areas within the District's boundaries and are elected only by the voters who reside in the same Trustee Areas (Education Code Section 5030(b)).



# BACKGROUND

## WHAT IS THE CALIFORNIA VOTING RIGHTS ACT (“CVRA”)?

- Took effect January 1, 2003.
- Prohibits the use of “at-large” elections when such an election system:

*“impairs the ability of a protected class to elect candidates of its choice or its ability to influence the outcome of an election....”*

-(Elections Code §14027.)

- The Board has taken action to adopt a resolution initiating the transition from at-large to by-area elections.



# CONSIDERATIONS IN TRUSTEE AREAS



Each area shall contain nearly equal number of inhabitants



Follow man-made and natural geographic features, as much as possible



Drawn to comply with the Federal Voting Rights Act



Respect incumbency, if possible



Compact and contiguous, as much as possible



Other local considerations (i.e., school boundaries, locations of school sites)

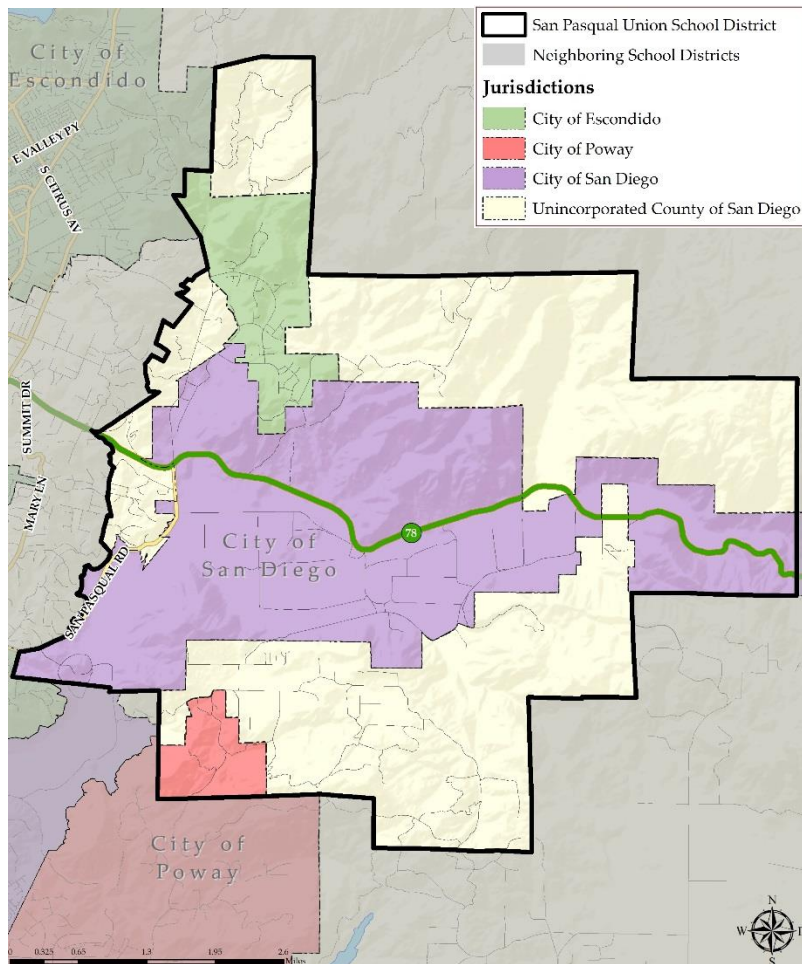


Respect communities of interest, as much as possible



# DISTRICT DEMOGRAPHICS

## 2010 CENSUS DATA



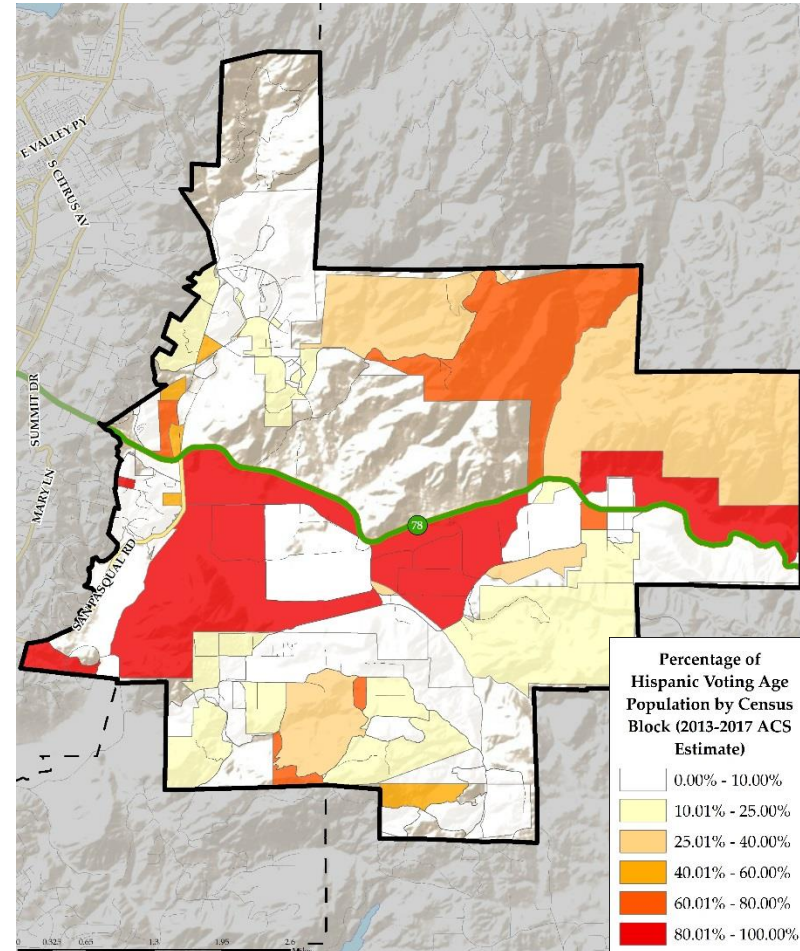
Population	Total Population		Age 18 and over	
	Total	%	Total	%
Hispanic/Latino	620	19.25%	356	16.26%
White	2,310	71.74%	1,660	75.80%
Black / African American	63	1.96%	23	1.05%
American Indian / Alaska Native	8	0.25%	5	0.23%
Asian	136	4.22%	97	4.43%
Native Hawaiian/ Pacific Islander	6	0.19%	5	0.23%
Other	10	0.31%	9	0.41%
Two or More Races	67	2.08%	35	1.60%
<b>Total Population</b>	<b>3,220</b>	<b>100.00%</b>	<b>2,190</b>	<b>100.00%</b>



# DISTRICT DEMOGRAPHICS

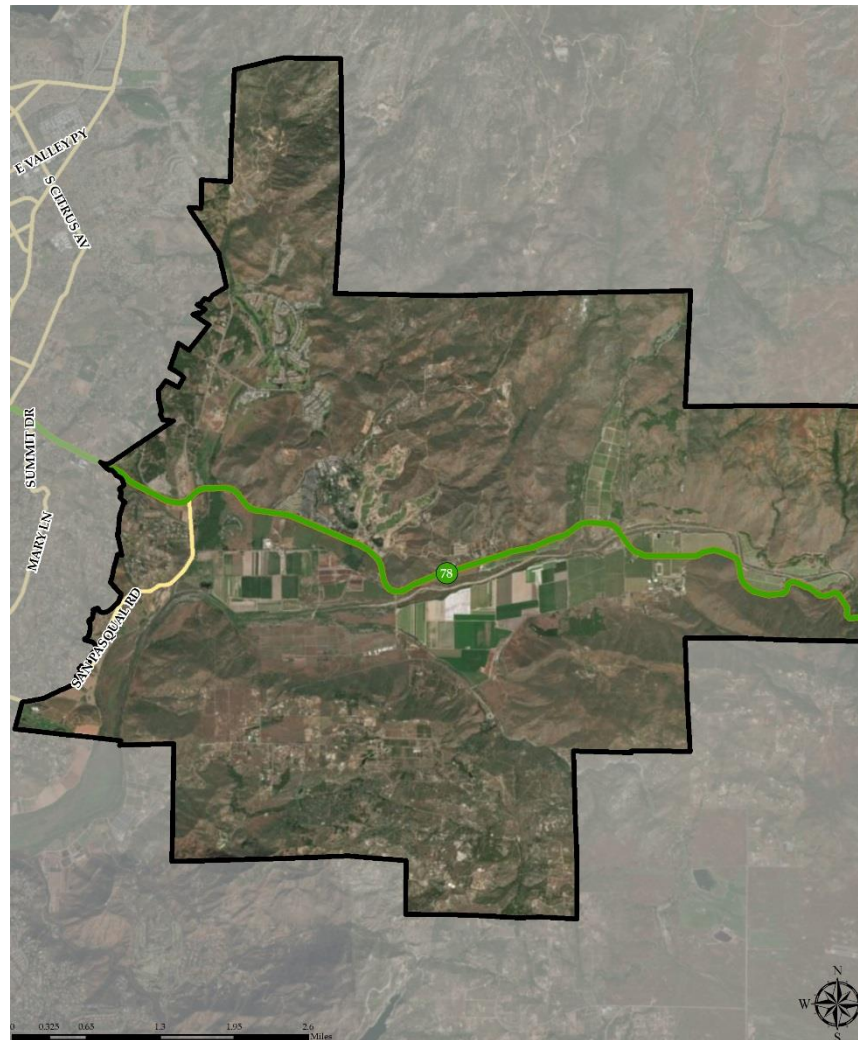
## CITIZEN VOTING AGE POPULATION ESTIMATES

Population	2013-2017 CVAP	
	Total	%
Hispanic/Latino	194	7.82%
White	2,082	83.95%
Black/ African American	14	0.56%
American Indian/Alaska Native	0	0.00%
Asian	153	6.17%
Native Hawaiian/ Pacific Islander	0	0.00%
Other	0	0.00%
Two or More Races	29	1.17%
<b>Total Population</b>	<b>2,480</b>	<b>100.00%</b>





# HOW SHOULD LINES BE DRAWN?





# PRE-MAP PUBLIC HEARING

## EXAMPLES OF FEEDBACK FOR MAPPING PROCESS

---

*“I would like to keep Neighborhood X and Neighborhood Y in the same trustee area...”*





# PRE-MAP PUBLIC HEARING

## EXAMPLES OF FEEDBACK FOR MAPPING PROCESS

---

*I think:*

- Highway 78
- San Pasqual Road

*... may make sense as a trustee area boundary because ...*

- It keeps communities together
- It provides good representation



# QUESTIONS