

NOTICE OF PUBLIC HEARING
PROPOSED CHANGE OF ELECTION SYSTEM AND ESTABLISHMENT OF
TRUSTEE AREAS FOR THE GOVERNING BOARD OF
THE SAN PASQUAL UNION SCHOOL DISTRICT

You are hereby notified that a resolution has been filed in accordance with
Education Code Section 5019 for a change of election system and the
establishment of trustee areas for the Governing Board of the San Pasqual Union
School District.

YOU WILL THEREFORE TAKE NOTICE that this matter will come before the
Governing Board of the San Pasqual Union School District
on Tuesday, November 12, 2019, at 5:30 p.m. at:

**San Pasqual Union School District, Board Room
15305 Rockwood Road, Escondido, California 92027**

Questions regarding this hearing can be directed to Pamela Hansen to
pamela.hansen@sanpasqualunion.net or 760-745-4931.

What is the change?

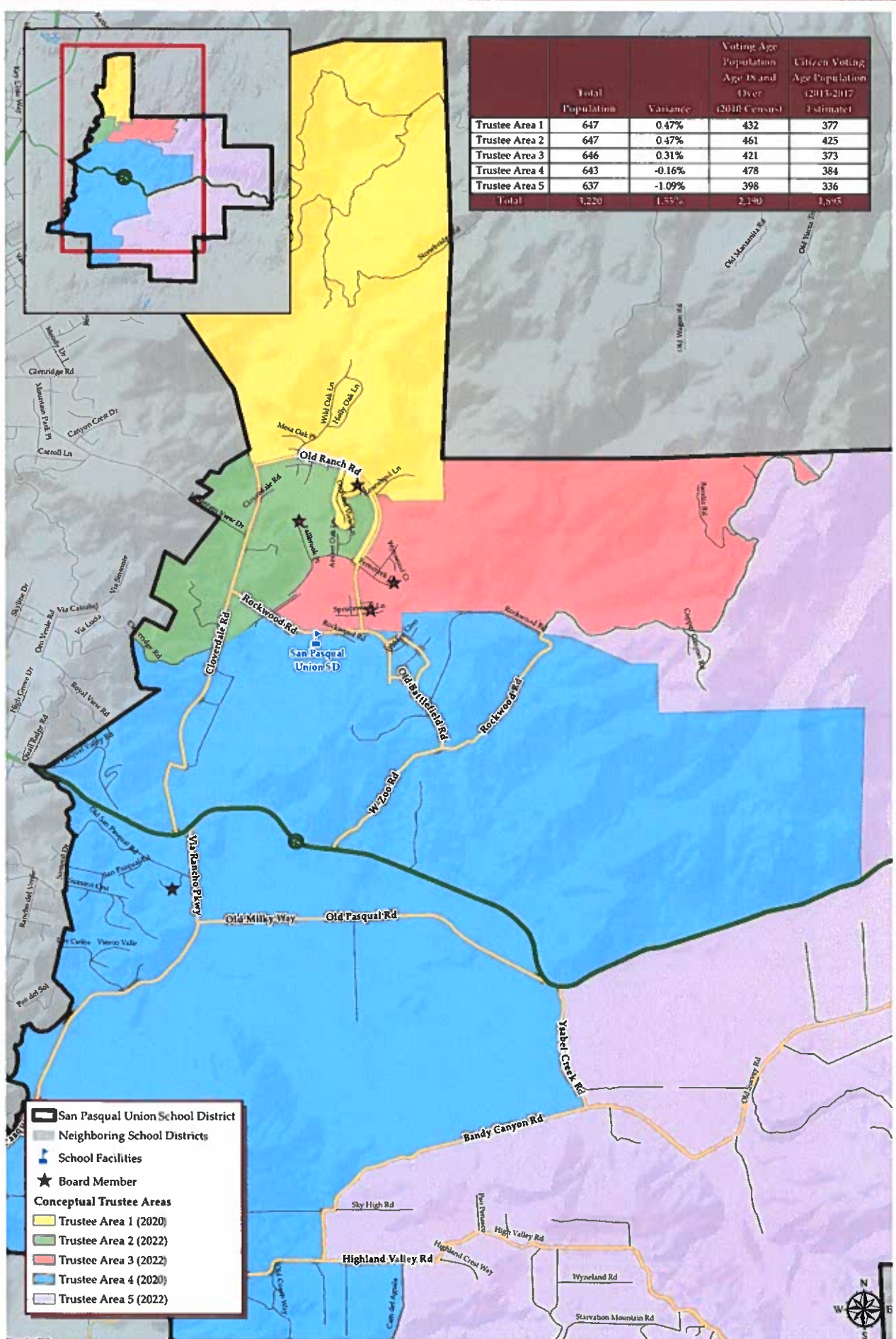
Under the new election system, the district would be divided into five geographic areas, and one board member living in each area would be elected by the voters who live in that area.

How can you get involved?

The San Pasqual Union School District Board of Education is seeking input from the community on the proposed change in the district's election system and the proposal boundaries of trustee area. To learn about these changes and to express your opinion, you are invited to attend a public hearing conducted by the San Pasqual Union School District Board of Education. Your input is welcome and encouraged.

SAN PASQUAL UNION SCHOOL DISTRICT CONCEPTUAL TRUSTEE AREAS - SCENARIO 1

	Total Population	Variance	Voting Age Population Age 18 and Over (2010 Census)	Citizen Voting Age Population (2013-2017 Estimate)
Trustee Area 1	647	0.47%	432	377
Trustee Area 2	647	0.47%	461	425
Trustee Area 3	646	0.31%	421	373
Trustee Area 4	643	-0.16%	478	384
Trustee Area 5	637	-1.09%	398	336
Total	3,220	1.55%	2,190	1,895



San Pasqual Union School District
 Neighboring School Districts
🏫 School Facilities
★ Board Member
Conceptual Trustee Areas
 Trustee Area 1 (2020)
 Trustee Area 2 (2022)
 Trustee Area 3 (2022)
 Trustee Area 4 (2020)
 Trustee Area 5 (2022)



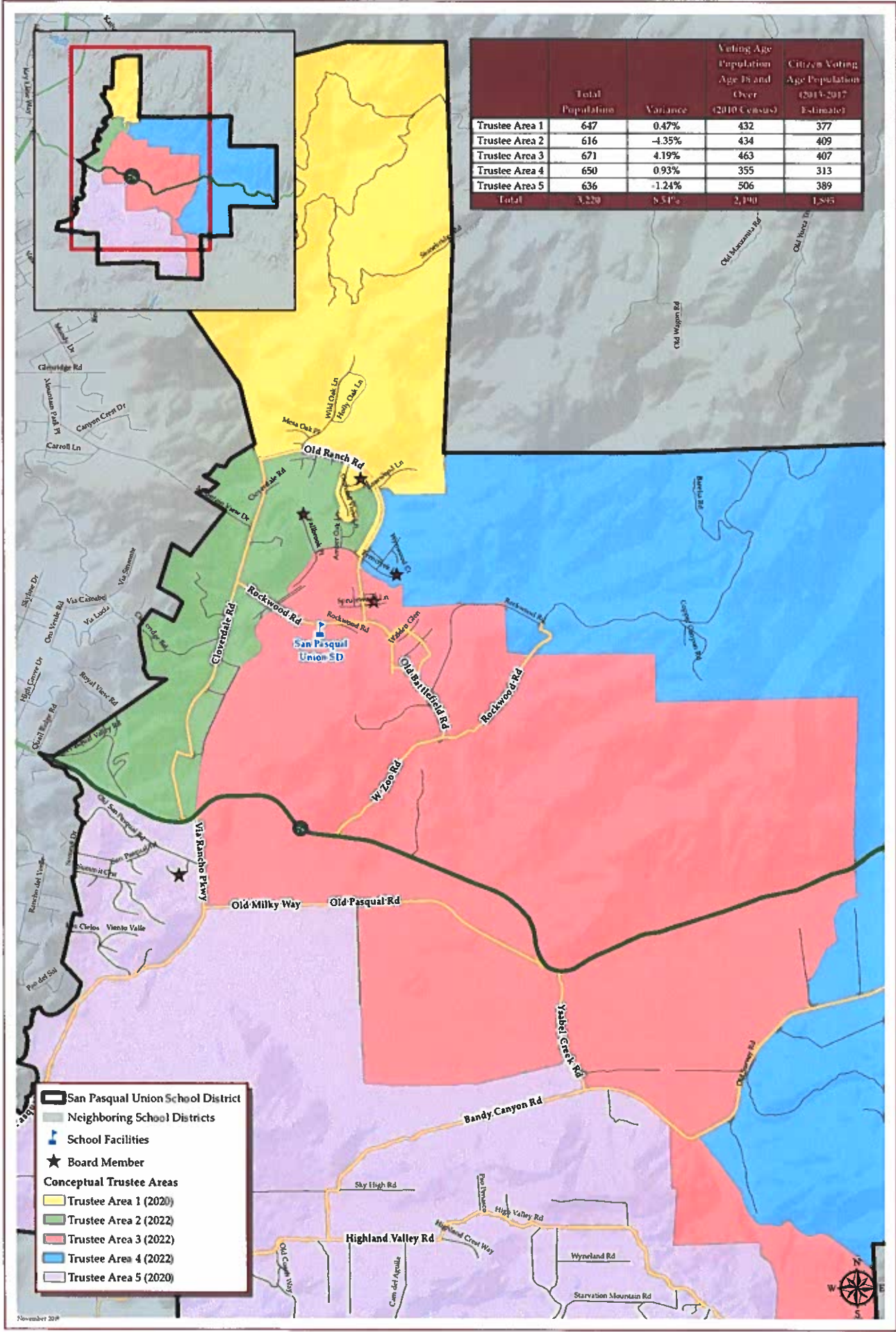
SAN PASQUAL UNION SCHOOL DISTRICT
CONCEPTUAL TRUSTEE AREAS - SCENARIO 1

Total Population (2010 Census)						
	Trustee Area 1	Trustee Area 2	Trustee Area 3	Trustee Area 4	Trustee Area 5	Variance
Population	647	647	646	643	637	
Population Variance	3	3	2	-1	-7	
	0.47%	0.47%	0.31%	-0.16%	-1.09%	1.55%
Hispanic/Latino	52	81	80	166	241	
	8.04%	12.52%	12.38%	25.82%	37.83%	
White	540	517	497	436	320	
	83.46%	79.91%	76.93%	67.81%	50.24%	
Black/	4	2	6	2	-9	
African American	0.62%	0.31%	0.93%	0.31%	7.69%	
American Indian/	2	1	2	1	2	
Alaska Native	0.31%	0.15%	0.31%	0.16%	0.31%	
Asian	32	26	33	36	9	
	4.95%	4.02%	5.11%	5.60%	1.41%	
Native Hawaiian/	0	1	1	0	4	
Other Pacific Islander	0.00%	0.15%	0.15%	0.00%	0.63%	
Other	4	0	3	0	3	
	0.62%	0.00%	0.46%	0.00%	0.47%	
Two or More Races	14	19	23	2	9	
	2.16%	2.94%	3.56%	0.31%	1.41%	

Population 18 and Over (2010 Census)						
	Trustee Area 1	Trustee Area 2	Trustee Area 3	Trustee Area 4	Trustee Area 5	Variance
Population	432	461	421	478	398	
Population Variance	-6	23	-17	40	-40	
	-1.37%	5.25%	-3.88%	9.13%	-9.13%	
Hispanic/Latino	32	47	46	108	123	
	7.41%	10.20%	10.93%	22.59%	30.90%	
White	367	381	332	337	243	
	84.95%	82.65%	78.86%	70.50%	61.06%	
Black/	2	2	2	1	16	
African American	0.46%	0.43%	0.48%	0.21%	4.02%	
American Indian/	1	1	1	1	1	
Alaska Native	0.23%	0.22%	0.24%	0.21%	0.25%	
Asian	21	21	23	29	3	
	4.86%	4.56%	5.46%	6.07%	0.75%	
Native Hawaiian/	0	1	1	0	3	
Other Pacific Islander	0.00%	0.22%	0.24%	0.00%	0.75%	
Other	3	0	3	0	3	
	0.69%	0.00%	0.71%	0.00%	0.75%	
Two or More Races	6	8	13	2	6	
	1.39%	1.74%	3.09%	0.42%	1.51%	

Citizens by Voting Age Population Estimate (2013-2017)						
	Trustee Area 1	Trustee Area 2	Trustee Area 3	Trustee Area 4	Trustee Area 5	Variance
Population	377	425	373	384	336	
Population Variance	-2	46	-6	5	-43	
	-0.53%	12.14%	-1.58%	1.32%	-11.35%	
Hispanic/Latino	31	51	45	72	93	
	8.22%	12.00%	12.06%	18.75%	27.68%	
White	305	322	275	274	213	
	80.90%	75.76%	73.73%	71.35%	63.39%	
Black/	1	1	1	0	12	
African American	0.27%	0.24%	0.27%	0.00%	3.57%	
American Indian/	0	0	0	0	0	
Alaska Native	0.00%	0.00%	0.00%	0.00%	0.00%	
Asian	29	30	34	36	3	
	7.69%	7.06%	9.12%	9.38%	0.89%	
Native Hawaiian/	0	0	0	0	0	
Other Pacific Islander	0.00%	0.00%	0.00%	0.00%	0.00%	
Other	0	0	0	0	0	
	0.00%	0.00%	0.00%	0.00%	0.00%	
Two or More Races	10	21	17	2	15	
	2.65%	4.94%	4.56%	0.52%	4.46%	

SAN PASQUAL UNION SCHOOL DISTRICT CONCEPTUAL TRUSTEE AREAS - SCENARIO 2



November 2018

SAN PASQUAL UNION SCHOOL DISTRICT
CONCEPTUAL TRUSTEE AREAS - SCENARIO 2

Total Population (2010 Census)						
	Trustee Area 1	Trustee Area 2	Trustee Area 3	Trustee Area 4	Trustee Area 5	Variance
Population	647	616	671	650	636	
Population Variance	3	-28	27	6	-8	
	0.47%	-4.35%	4.19%	0.93%	-1.24%	8.54%
Hispanic/Latino	52	83	136	196	153	
	8.04%	13.47%	20.27%	30.15%	24.06%	
White	540	484	459	360	467	
	83.46%	78.57%	68.41%	55.38%	73.43%	
Black/ African American	4	2	6	50	1	
	0.62%	0.32%	0.89%	7.69%	0.16%	
American Indian/ Alaska Native	2	1	2	2	1	
	0.31%	0.16%	0.30%	0.31%	0.16%	
Asian	32	26	44	26	8	
	4.95%	4.22%	6.56%	4.00%	1.26%	
Native Hawaiian/ Other Pacific Islander	0	1	2	0	3	
	0.00%	0.16%	0.30%	0.00%	0.47%	
Other	4	0	4	2	0	
	0.62%	0.00%	0.60%	0.31%	0.00%	
Two or More Races	14	19	18	13	3	
	2.16%	3.08%	2.68%	2.00%	0.47%	

Population 18 and Over (2010 Census)						
	Trustee Area 1	Trustee Area 2	Trustee Area 3	Trustee Area 4	Trustee Area 5	Variance
Population	432	434	463	355	506	
Population Variance	-6	-4	25	-83	68	
	-1.37%	-0.91%	5.71%	-18.95%	15.53%	
Hispanic/Latino	32	48	89	89	98	
	7.41%	11.06%	19.22%	25.07%	19.37%	
White	367	353	320	227	393	
	84.95%	81.34%	69.11%	63.94%	77.67%	
Black/ African American	2	2	2	16	1	
	0.46%	0.46%	0.43%	4.51%	0.20%	
American Indian/ Alaska Native	1	1	1	1	1	
	0.23%	0.23%	0.22%	0.28%	0.20%	
Asian	21	21	34	13	8	
	4.86%	4.84%	7.34%	3.66%	1.58%	
Native Hawaiian/ Other Pacific Islander	0	1	2	0	2	
	0.00%	0.23%	0.43%	0.00%	0.40%	
Other	3	0	4	2	0	
	0.69%	0.00%	0.86%	0.56%	0.00%	
Two or More Races	6	8	10	8	3	
	1.39%	1.84%	2.16%	2.25%	0.59%	

Citizens by Voting Age Population Estimate (2013-2017)						
	Trustee Area 1	Trustee Area 2	Trustee Area 3	Trustee Area 4	Trustee Area 5	Variance
Population	377	409	407	313	389	
Population Variance	-2	30	28	-66	10	
	-0.53%	7.92%	7.39%	-17.41%	2.64%	
Hispanic/Latino	31	56	68	73	64	
	8.22%	13.69%	16.71%	23.32%	16.45%	
White	305	301	270	195	318	
	80.90%	73.59%	66.34%	62.30%	81.75%	
Black/ African American	1	1	1	12	0	
	0.27%	0.24%	0.25%	3.83%	0.00%	
American Indian/ Alaska Native	0	0	0	0	0	
	0.00%	0.00%	0.00%	0.00%	0.00%	
Asian	29	30	50	18	5	
	7.69%	7.33%	12.29%	5.75%	1.29%	
Native Hawaiian/ Other Pacific Islander	0	0	0	0	0	
	0.00%	0.00%	0.00%	0.00%	0.00%	
Other	0	0	0	0	0	
	0.00%	0.00%	0.00%	0.00%	0.00%	
Two or More Races	10	21	18	14	2	
	2.65%	5.13%	4.42%	4.47%	0.51%	