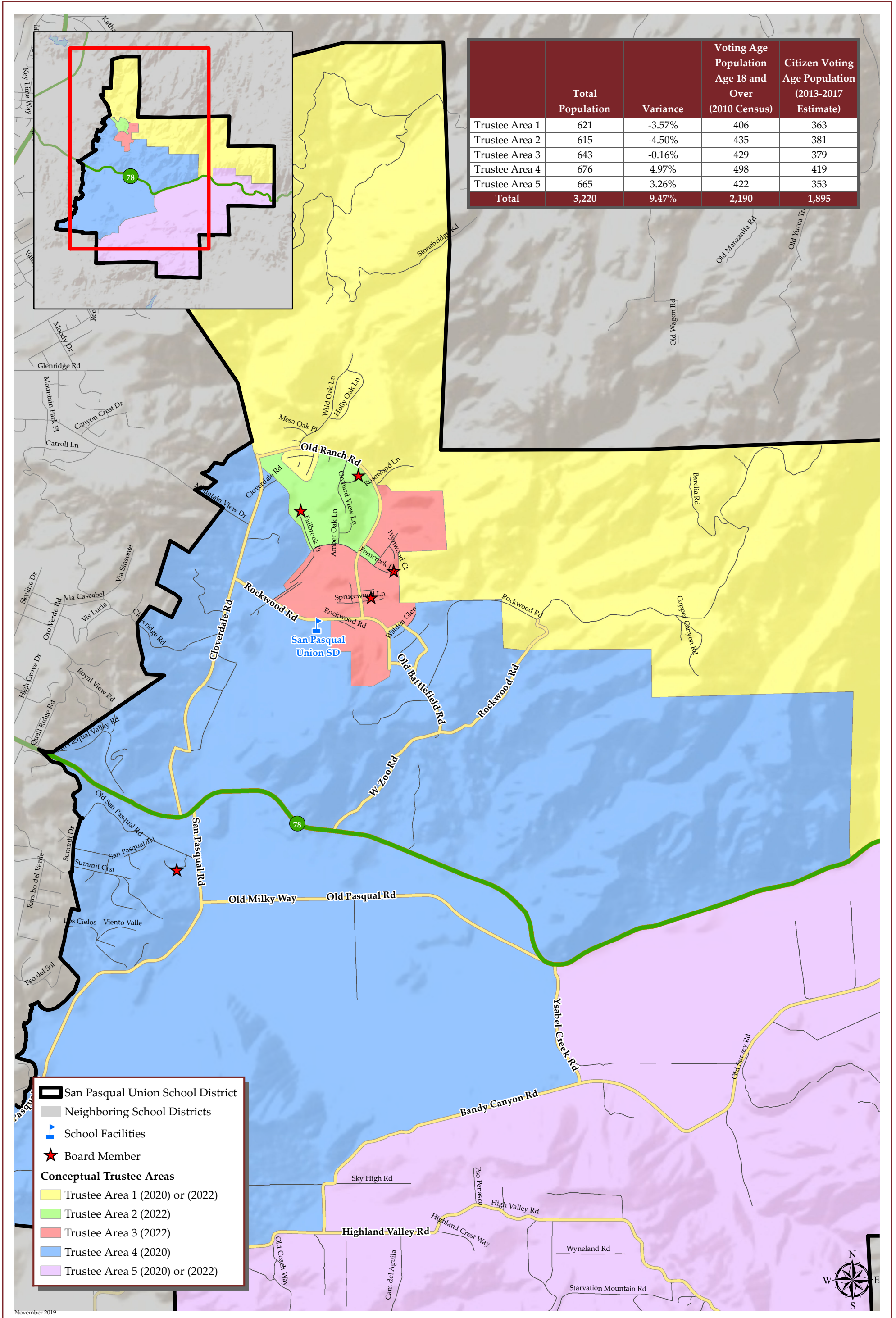


SAN PASQUAL UNION SCHOOL DISTRICT CONCEPTUAL TRUSTEE AREAS - SCENARIO 3



November 2019

SAN PASQUAL UNION SCHOOL DISTRICT

CONCEPTUAL TRUSTEE AREAS - SCENARIO 3

Total Population (2010 Census)						
	Trustee Area 1	Trustee Area 2	Trustee Area 3	Trustee Area 4	Trustee Area 5	Variance
Population	621	615	643	676	665	
Population Variance	-23	-29	-1	32	21	9.47%
	-3.57%	-4.50%	-0.16%	4.97%	3.26%	
Hispanic/Latino	71	57	70	192	230	
	11.43%	9.27%	10.89%	28.40%	34.59%	
White	486	513	508	442	361	
	78.26%	83.41%	79.00%	65.38%	54.29%	
Black/ African American	4	2	6	2	49	
	0.64%	0.33%	0.93%	0.30%	7.37%	
American Indian/ Alaska Native	3	0	2	1	2	
	0.48%	0.00%	0.31%	0.15%	0.30%	
Asian	29	33	29	36	9	
	4.67%	5.37%	4.51%	5.33%	1.35%	
Native Hawaiian/ Other Pacific Islander	0	1	1	0	4	
	0.00%	0.16%	0.16%	0.00%	0.60%	
Other	3	1	3	0	3	
	0.48%	0.16%	0.47%	0.00%	0.45%	
Two or More Races	26	8	23	3	7	
	4.19%	1.30%	3.58%	0.44%	1.05%	

Population 18 and Over (2010 Census)						
	Trustee Area 1	Trustee Area 2	Trustee Area 3	Trustee Area 4	Trustee Area 5	
Population	406	435	429	498	422	
Population Variance	-32	-3	-9	60	-16	
	-7.31%	-0.68%	-2.05%	13.70%	-3.65%	
Hispanic/Latino	41	38	43	122	112	
	10.10%	8.74%	10.02%	24.50%	26.54%	
White	328	367	345	342	278	
	80.79%	84.37%	80.42%	68.67%	65.88%	
Black/ African American	2	2	2	1	16	
	0.49%	0.46%	0.47%	0.20%	3.79%	
American Indian/ Alaska Native	2	0	1	1	1	
	0.49%	0.00%	0.23%	0.20%	0.24%	
Asian	21	23	21	29	3	
	5.17%	5.29%	4.90%	5.82%	0.71%	
Native Hawaiian/ Other Pacific Islander	0	1	1	0	3	
	0.00%	0.23%	0.23%	0.00%	0.71%	
Other	2	1	3	0	3	
	0.49%	0.23%	0.70%	0.00%	0.71%	
Two or More Races	10	3	13	3	6	
	2.46%	0.69%	3.03%	0.60%	1.42%	

Citizens by Voting Age Population Estimate (2013-2017)						
	Trustee Area 1	Trustee Area 2	Trustee Area 3	Trustee Area 4	Trustee Area 5	
Population	363	381	379	419	353	
Population Variance	-16	2	0	40	-26	
	-4.22%	0.53%	0.00%	10.55%	-6.86%	
Hispanic/Latino	40	38	42	90	82	
	11.02%	9.97%	11.08%	21.48%	23.23%	
White	273	305	287	283	241	
	75.21%	80.05%	75.73%	67.54%	68.27%	
Black/ African American	1	1	1	0	12	
	0.28%	0.26%	0.26%	0.00%	3.40%	
American Indian/ Alaska Native	0	0	0	0	0	
	0.00%	0.00%	0.00%	0.00%	0.00%	
Asian	29	33	31	36	3	
	7.99%	8.66%	8.18%	8.59%	0.85%	
Native Hawaiian/ Other Pacific Islander	0	0	0	0	0	
	0.00%	0.00%	0.00%	0.00%	0.00%	
Other	0	0	0	0	0	
	0.00%	0.00%	0.00%	0.00%	0.00%	
Two or More Races	19	4	17	10	15	
	5.23%	1.05%	4.49%	2.39%	4.25%	