

# SPU SUMMMER GOALS

## 2020

---



# Contract Work

- PILOT PAINTING INC
- READY LINE FLEET INC
- TURBOSCAPE INC
- PCH EQUIPMENT INC
- ARTISTIC SOLUTION
- CARPENTER'S PLUMBING INC
- ASIFP FIRE PROTECTION INC
- SYLVESTER ROOFING INC.

# PILOT PAINTING INC

- Prepare, spot prime and paint 6' stucco walls tan by west gate to include wall by 701 freezer
- Prepare, spot prime and paint 200 building red siding (South, west and east elevations
- Prepare, spot prime and paint east elevation red siding 300 bldg. Kindergarten playground side
- Prepare, spot prime and paint 800 bldg. east elevation red siding and silver trim board at brick
- Replace 2 4x8 plywood soffits. Includes prime and paint
- Prepare, spot prime and paint freezer room 701 tan stucco
- Prepare, spot prime and paint 8' metal trash enclosure doors
- Remove and install approximately 100' of expansion joint and weep screed on Super toilet bldg
- Classroom 804 west side red siding
- Total Cost: \$12,250

# Red siding 800 and 200 buildings



# West side stucco wall



# Ready Line Fleet Inc.

- Overhaul Buses and White Vehicles
- Service Engine, Electrical system, Drive Train, Brakes,
- Service Cooling system, Suspensions/Steering system, Chassis
- Service Air brake system, Tires
- Safety, inspect/service, seat belts, seats, safety signs, mirrors, fire extinguisher, safety triangle
- Estimated Cost: \$4,000.00



# School's Van and Buses



# TurboScape Inc.

## Playground Wood Chips

- Replenish lower playground
- Preschools playground
- Kindergarten playground
- **Why use play chips?**
- Shock Absorbent • Aesthetically pleasing • Certified • Low cost • Simple maintenance • All natural
- Cost: \$6,000



# Kindergarten and Preschool Playgrounds



# PCH EQUIPMENT Inc.

- Over haul school's vacuums
- Cost: \$400.00

# Oreck Vacuum



# Artistic Solution

- Trim 6 oak trees between 600 building and garden
- Trim/lace 2 giant sycamore trees (Located front of Resource room, and far west gate)
- Remove 2 giant dead cypress trees and trim/lace one cypress tree by portable 904
- Trim/lace willow in courtyard
- Remove 5 tree stumps in courtyard
- Total Cost \$2,500.

# Sylvester Roofing

## Barn Flat Roof Leaks

- 2 Main sources of water intrusion found: 1. Roofing separating at thru duct penetrations to large HVAC curbs / 2. Heavy blistering throughout entire roof, half of which you can hear air escaping through seams
- Most curb corners and pipe flashings in need of maintenance
- Cap sheet of roofing has extensive alligatoring (in tandem w/ blistering)
- Thru duct penetrations at parapet wall have metal flashings with sealant that is in need of maintenance (remove old sealant/clean/reseal)
- All ductwork joints in need of maintenance due to seam sealant starting to crack/separate
- Cost for new roof: \$20,407.11



# Barn Flat Roof



# Barn Flat Roof



# Barn Flat Roof





# Carpenter's Plumbing Inc.

- Backflow prevention test is required in accordance with the Federal Safe Drinking Water Act Amendment of 1996, State of California Title 17 and the City of Escondido's Cross Control Regulations. School has 8 back flow valves requiring annual preventive testing, consisting of the following valves:
  - Test Valve 1.
  - Test Valve 2.
  - Test Relief Valves.
  - Test shut off Valves.
  - Estimated Cost: \$400.00

# ASIFP Fire Protection Inc.

- Annual Fire Alarm Testing
- Test Sprinkler Water Flow and Tamper.
- Test Visual Alarm Devices.
- Test Audible Alarm Devices.
- Test Fire pump utilized for sprinkler system.
- Test verifies central station signals.
- Inspect test all Post indicator Valves (PIV)
- Cost Estimate: \$1,175.00



# Cost



- Total Cost Summer 2020 contract work: \$48,062.11
- Total Cost Summer 2019 contract work: \$55,921.00
- Summer 2020 savings: \$7,858.89



# Operations Summer Maintenance

---

# Paint

- Teacher lounge/workroom.
- Super toilets interior.
- Portables 400, 700, 900.
- Storage containers
- Select classrooms exterior/interior doors.
- Barn interior walls.
- Barn stage.
- Select lunch benches.
- Paint Post Indicator Valves (PIV). Total; 14 PIV valves
- Estimated cost of paint and painting supplies: \$3,300.00

# HVACs

- Change air filters
- Change fan belts.
- Check supply fans and return fans for corrosion and wear and alignment.
- Lubricate bearings
- Clean cooling coils, fins and straighten bent fins.
- Visually inspect for refrigerant or water leaks, straighten bent fins, check for loose wires etc.
- Cost: \$1,406.16

# Landscape

- Trim brush/plants throughout campus.
- Reseed/aerate grass.
- Lay woodchips select areas.
- Trim trees
- Fire break behind campus remove brush
- Adjust/repair sprinkler heads.
- Exercise water valves.
- Maintain landscape throughout summer.
- Cost for wood chips: \$1,00.00
- Cost for grass seed: \$825.00
- Cost for pallet of topper soil: \$400.00
- Cost for Aerator rented: \$390.00
- Estimated Cost: \$2,876.50



# Summer Improvement Projects

---

# Sitting Area Middle School



# Steve and Tractor Barb

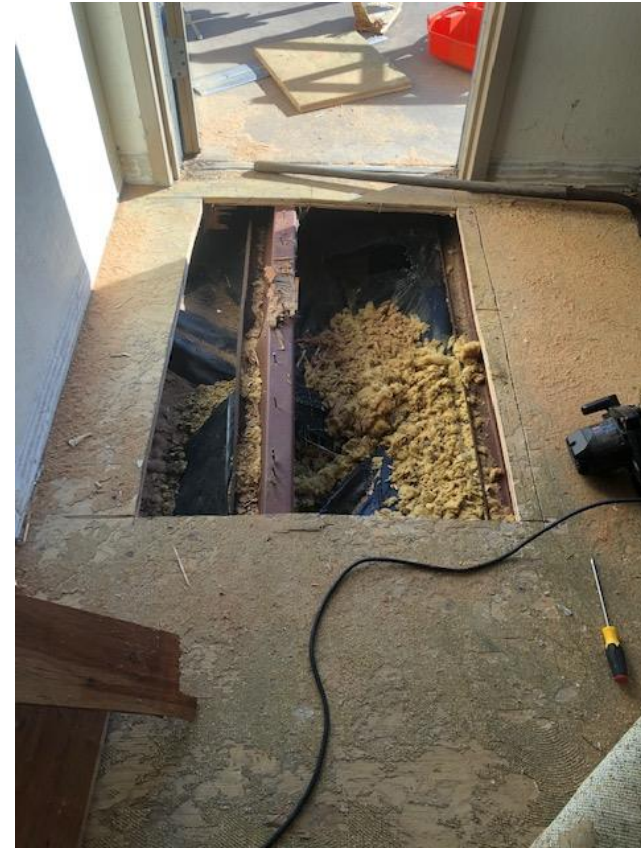




# Pea gravel corral and butterfly garden walkways



# Improve storm drain and repaired floor joist classroom 905





# Remove dying brush and plum tree, improve area with new flower bed



# Repair fire sprinkler leaks and fire alarm





# Questions

