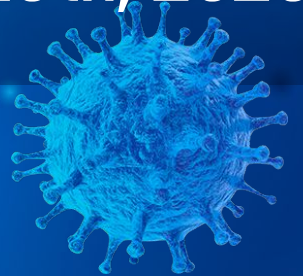
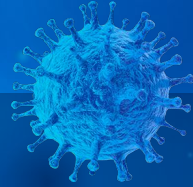


UPDATE:

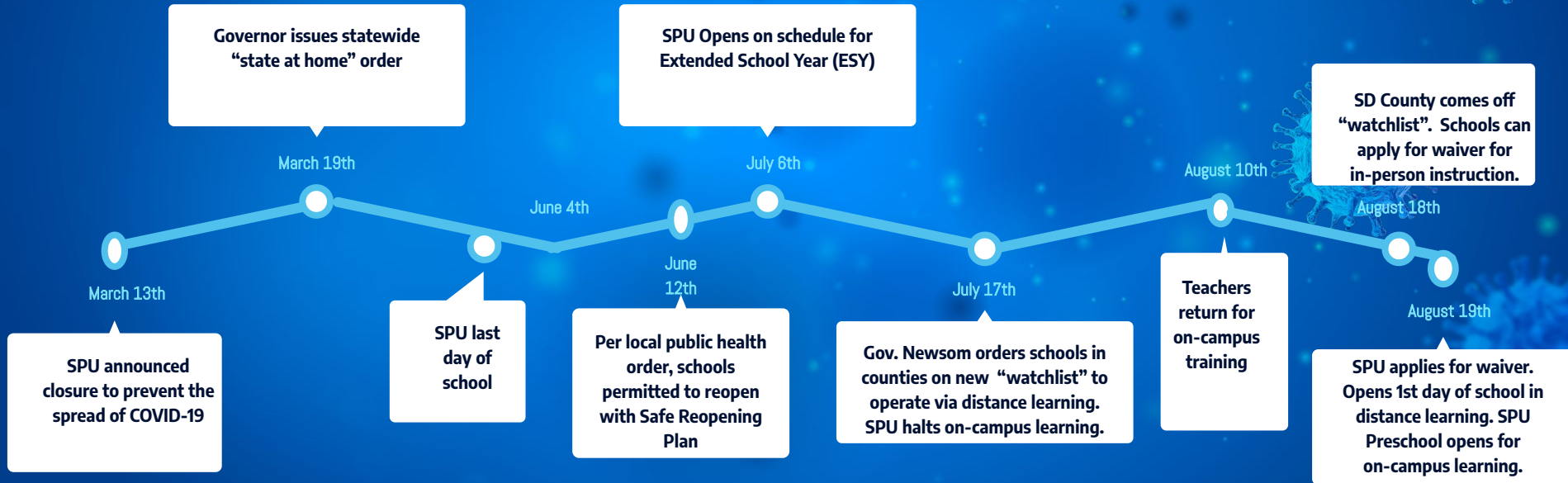
Safe Return to School Plan

Governing Board Presentation

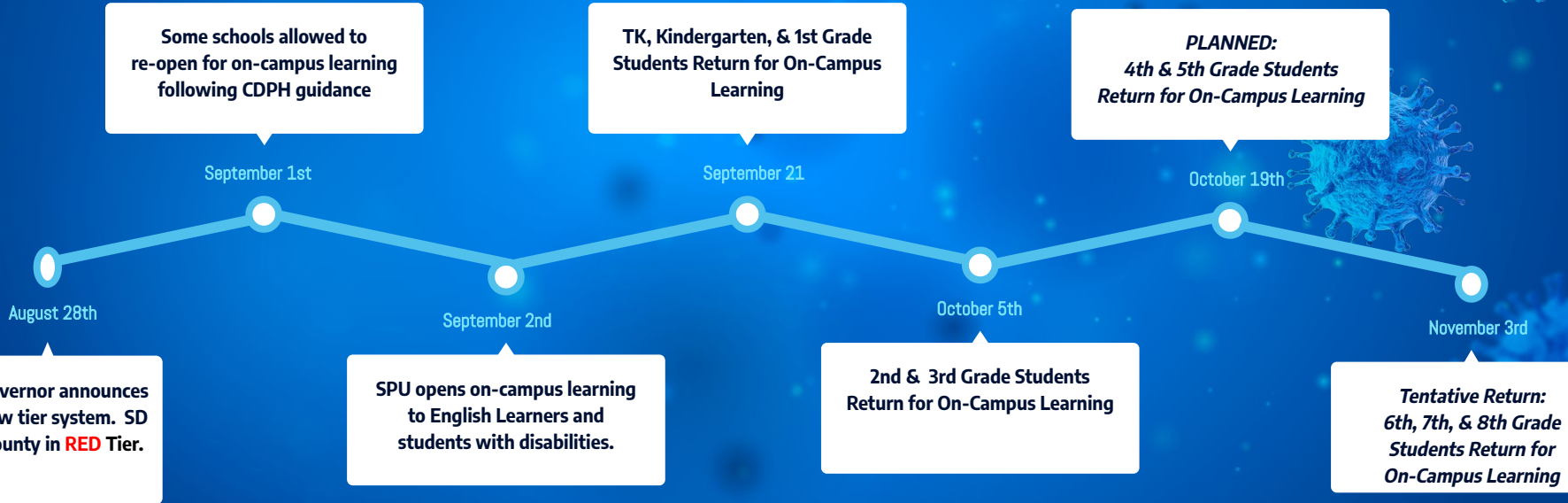
October 13th, 2020



Pandemic Timeline



Pandemic Timeline (cont.)



Return to School - Safety Updates

- ▶ Screening (all staff & students, every day)
- ▶ Testing (50% of staff every month)
- ▶ Distancing (6 feet or barriers)
 - ▷ Outdoor Learning
- ▶ Facial Coverings
- ▶ Sanitation

****2+ months = 0 COVID-19 Cases****



Return to School - Academic Updates

- ▶ Gradual return to classroom, prioritize high needs
- ▶ TK-5th Grade
 - ▷ On-Campus Learners AM
 - ▷ Distance Learners PM

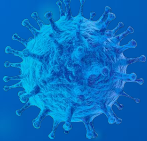
Alternate Synchronous/Asynchronous

Learning Modalities

	On-Campus	Distance	Undecided
TK-1st Grade	76%	24%	n/a
2nd-3rd Grade	77%	23%	n/a
4th-5th Grade	63%	20%	17%
6th-8th Grade	70%	11% (>20 students)	19%

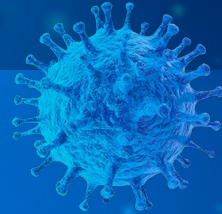
Return to School - Academic Updates



- ▶ Middle School - *Tentative Return on 11/3*
 - ▶ **Early Assumptions . . .**
 - ▶ More students would choose distance learning
= smaller class sizes
 - ▶ Health Conditions would improve significantly
- 

Return to School - Academic Updates

- ▶ Middle School - *Tentative Return on 11/3*
- ▶ **Challenges . . .**
 - ▶ Few distance learners, Larger class sizes
 - ▶ Multiple teachers
 - ▶ COVID Transmissibility 11+ years/old?
 - ▶ Trimester Break 11/20



Return to School - Academic Updates

▶ Middle School Considerations

- ▶ Distancing w/ Physical Barriers
- ▶ Teachers move classes, not students
- ▶ Semi-Self Contained Classes (1 cohort, 2 teachers)
 - ▶ Delayed start, 1st day 2nd Trimester
 - ▶ Earlier on-campus return (11/3), PM only, for struggling students
- ▶ Maximize outdoor learning spaces
- ▶ Blended Learning (i.e., AM/PM sessions)
- ▶ If # of Distance Learners remain small, likely Independent Study Model w/ Distance Learning Teacher

Questions & Discussion

