



MTSS Reading Specialist Support Services 2021-2022 Presentation



Christine English September 2021



San Pasqual Union School District Reading Specialist Support Services 2021-2022

Reading Specialist Team:

Christine English, Silvia Uceda-King, John Mayo

Services:

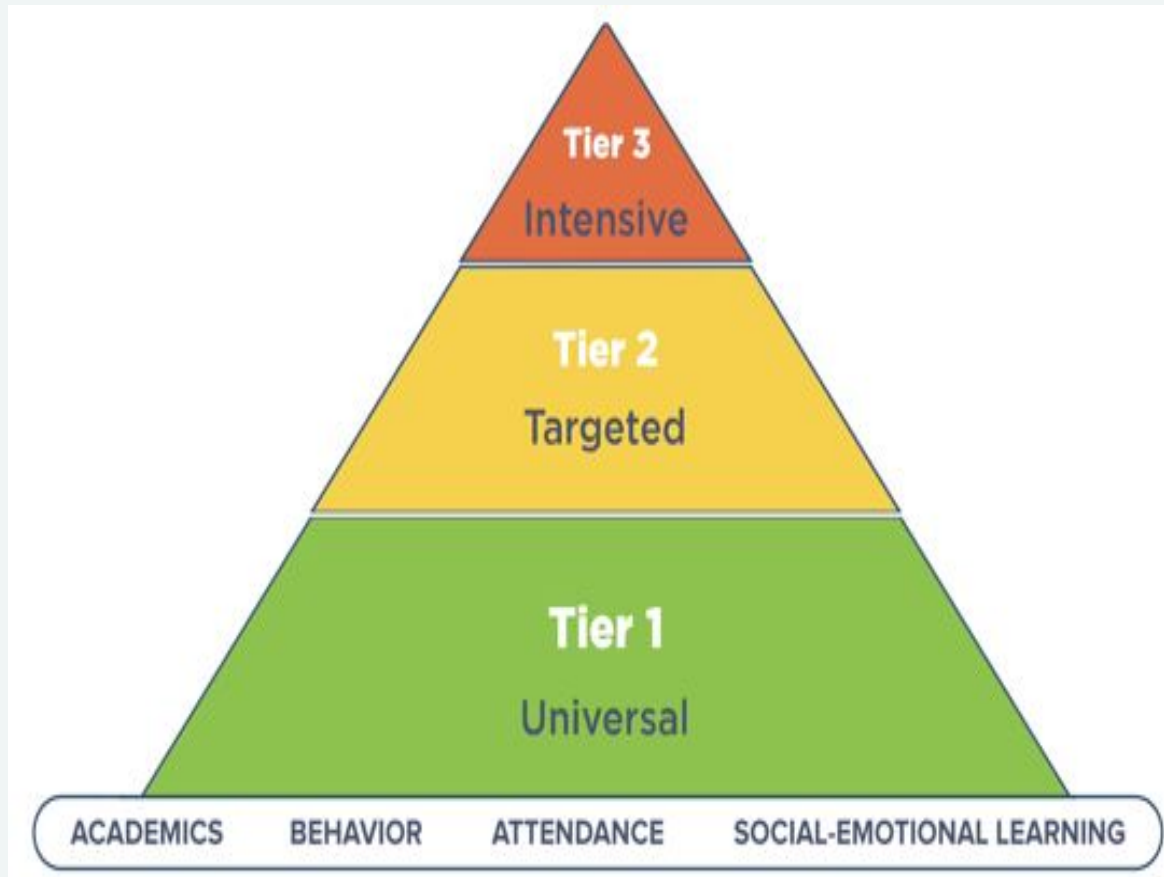
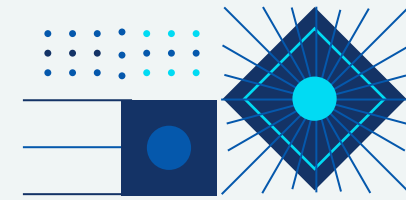
Reading Recovery Lessons

Grade Level Content-Comprehension Lessons

Fluency Lessons

Orton-Gillingham Lessons

MTSS Reading Services Overview



Tier I- 80% of Students

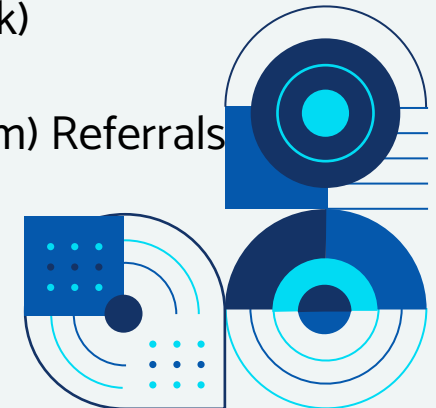
- District adopted curriculum, whole class
- Small group, in-class support with district adopted curriculum

Tier II- 15% of Students

- Everyone-A-Reader:
Volunteer Pull Out Support (1x1, 15-minute, Volunteer Lessons, 2-4 times per week)
- Reading Specialist Services:
Reading Specialist Team Pull Out Support (1x1, 25-minute, Specialist Lessons, 5 days per week)

Tier III- 5% of Students

- SST (Student Study Team) Referrals
- 504 Students
- IEP Students





Steps to Reading Reading Specialist Support Services 2021-2022



1. At the beginning of each school year and each new trimester, review student benchmark data (K-3 DRA) (4-5 MAPS)
Data can be located on NWEA and Multiple Measures platforms.
2. Students who are more than one grade level behind in reading will be eligible for Reading Specialist Support Services.
3. Grades 1-3 Lessons:
 - a. 1x1 with reading teacher
 - b. 25-minute daily lessons
 - c. targeted instruction, daily running records, and progress monitoring
 - d. grade level content themes, leveled books
4. At the end of each trimester, each student will be administered a DRA assessment to determine literacy progress.
Students who have reached grade level target will exit from services.
Students who have made adequate progress will continue with lessons.
Students who have showed minimal progress will be referred to an SST.

Description of Reading Support Lessons

Reading Recovery Lessons (Grades 1-3)

- Fluent Writing Practice (HF Grade Level Content)
- Familiar Re-Reading
- Running Record
- Letter and Word Work (Phonics, Spelling GL Content)
- New Text

Post Lesson

- Teacher analysis of running record
- Record Accuracy Percentage and Fluency WPM
- New book selection
- Add individualized teaching notes for following day's lesson plan

Fluency Lessons (Grades 4-5)

- Fluency-Repeated Readings/Leveled Passages
- Student & Teacher record WPM on Fluency Chart
- Students attend lessons during their "Study Hall" time
- Small group support across content is provided

Post Lesson

- Teacher Analysis of teaching points for fluency read
- Teacher analysis for additional instruction for across the content grade level curriculum

Grade Level Content -Comprehension Lessons (Grade 3)

- Phonics, Spelling Practice-Grade Level Content
- Vocabulary-Grade Level Content
- Fluency-Repeated Readings/Leveled Passages
- Student & Teacher record WPM on Fluency Chart
- Comprehension--Single Page, NF, Leveled Passages

Post Lesson

- Teacher analysis of phonic/vocab mastery
- Teacher Analysis of teaching points for fluency read
- Teacher analysis for student comprehension
- Add individualized teaching notes for following day's lesson plan

Orton-Gillingham Lessons (Grade 7)

- Letter-Sound Card Practice
- Phonics, Spelling Practice
- Blending/Syllabication Chart
- Fluency-Repeated Readings/Leveled Passages
- Running Record
- Comprehension
- Sight Words

Post Lesson

- Teacher analysis of phonics/vocab mastery
- Teacher analysis of teaching points for fluency read
- Teacher analysis for student comprehension
- Add individualized teaching notes for following day's lesson plan

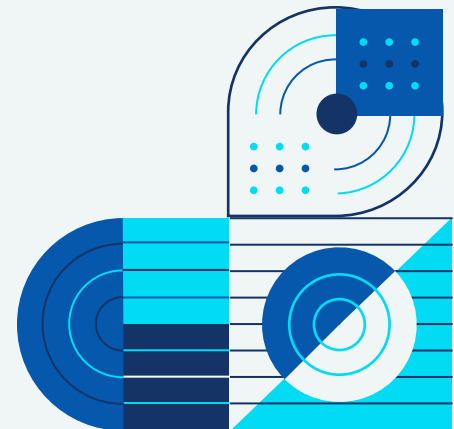


Our Literacy Goals at SPU...

Our literacy goals at SPU:

1. Identify students at each grade level who have not yet met our grade level literacy targets.
2. Students who are less than one year below grade level target will receive small group, in-class support with grade level content lessons, and/or Everyone-A-Reader 2-4 days per week.
3. Students who are more than one year below grade level target will receive 1x1 Reading Specialist Team lessons 5 days per week. (schedules permitting)
4. Individual lessons are fluid, flexible, and progress is monitored by anecdotal notes, running records, and DRA administration each grading period.

We strive for excellence in literacy for all of our students at SPU!





Links to Reading Specialist Documents:

[MTSS Parent Letter Reading Support Services](#)

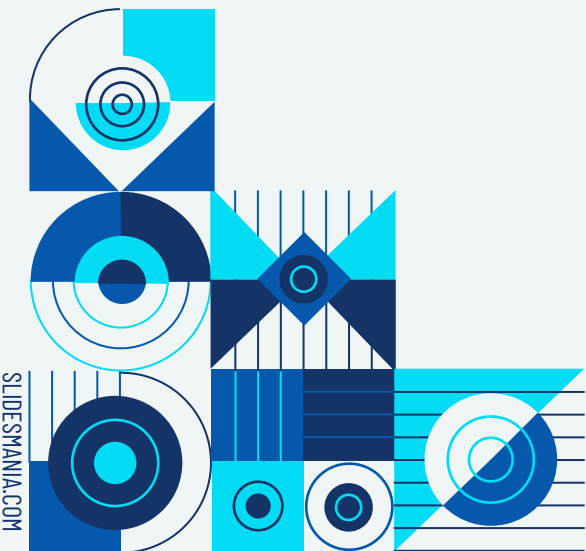
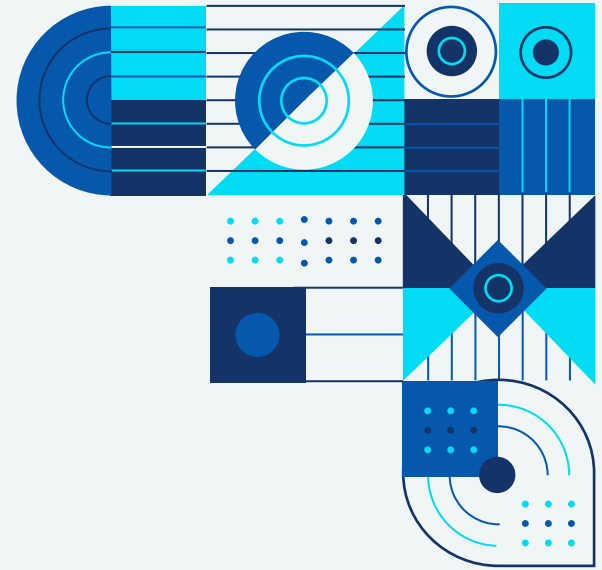
[Reading Recovery Lesson Plan](#)

[Reading Recovery Lesson Plan Overview](#)

[Grade Level Content Comprehension Lesson Plan](#)

[Orton Gillingham Lesson Plan](#)

[Running Record Recording Sheet](#)





Thank you!

Credits.

Presentation Template: [SlidesMania](#)

Images: [Unsplash](#)

Fonts used in this presentation: Ubuntu Condensed and Catamaran

