

A photograph of a modern classroom. In the foreground, there are several rows of light-colored desks with black tops and white perforated chairs. In the background, a chalkboard is covered with yellow chemical structures and formulas, including benzene rings, alcohols, and various chemical equations. To the right, there is a blue hexagonal structure, possibly a molecular model or a decorative element. The lighting is bright, suggesting a window on the left.

► **2020 CENSUS AND  
REDISTRICTING**

SAN PASQUAL UNION SCHOOL DISTRICT

**February 8, 2022**



**COOPERATIVE  
STRATEGIES**  
ASSESS • PLAN • FUND • BUILD

▶ DISTRICT DEMOGRAPHICS  
**2020 CENSUS DATA**



- Validated redistricting data was released by the California Department of Finance on September 20.
- These data showed changes in the area served by San Pasqual Union School District (SPUSD) from 2010 to 2020, including:
  - Overall population growth of 162 (5.0%)
  - Total Variance of 38.4% based on 2020 Census (*Out of Compliance*)

Population (Within LMSV District)	Total Population			
	2010 Census	2020 Census	Total Change	Percent Change
Trustee Area 1	647	678	31	4.8%
Trustee Area 2	616	577	-39	-6.3%
Trustee Area 3	671	812	141	21.0%
Trustee Area 4	650	552	-98	-15.1%
Trustee Area 5	636	763	127	20.0%
<b>Total Population</b>	<b>3,220</b>	<b>3,382</b>	<b>162</b>	<b>5.0%</b>

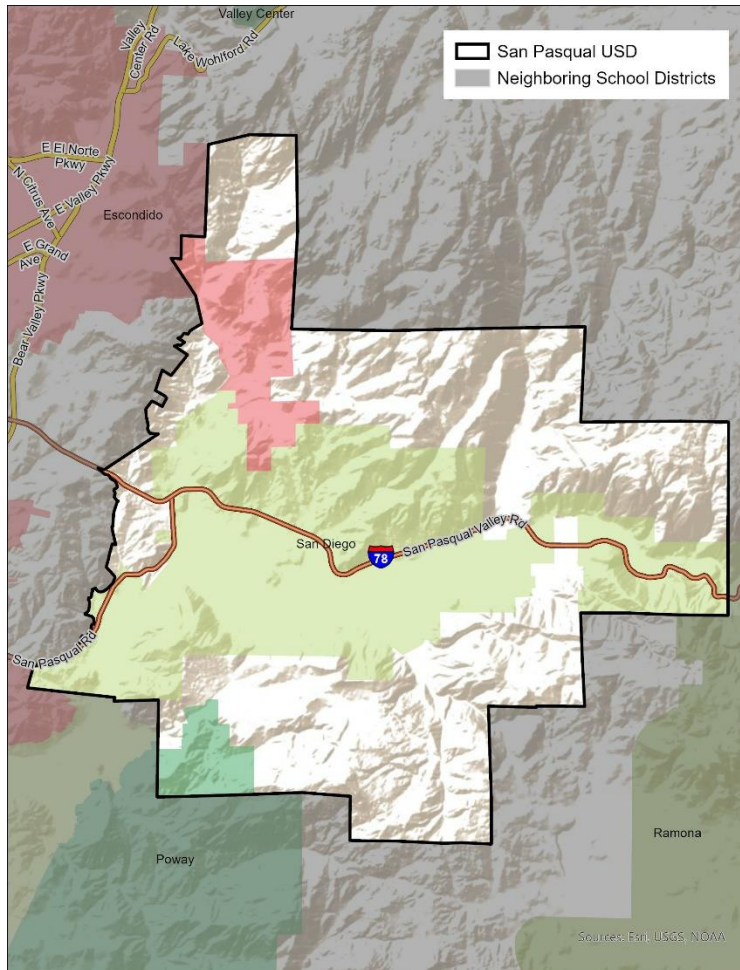
▶ **DISTRICT DEMOGRAPHICS**  
**2020 CENSUS DATA**



- The overall variance is calculated by subtracting the least populated Trustee Area (577) from the most populated (812) and dividing the result by the ideal (676)
- The ideal population is the total Population divided by the number of trustees
- Variance of individual Trustee Areas are calculated by subtracting the population from the ideal and dividing the result by the ideal population.

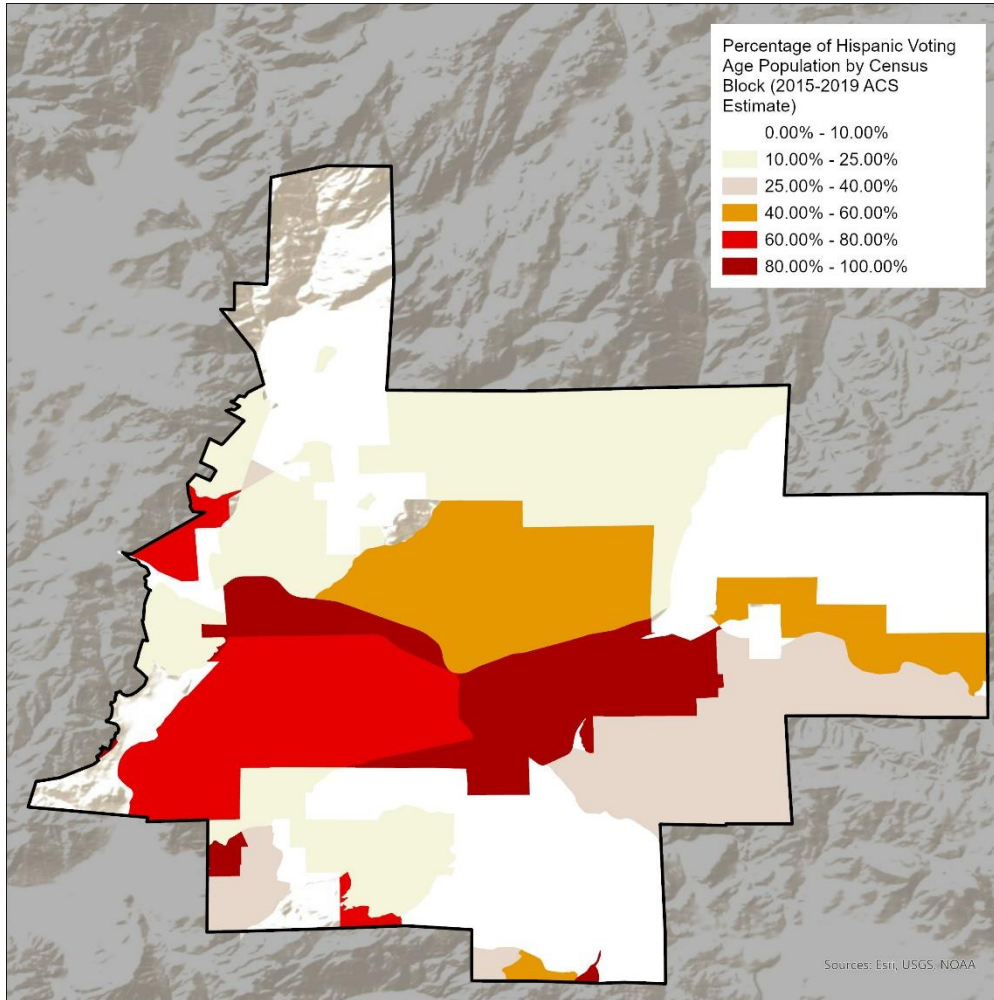
Trustee Area	2010 Census		2020 Census	
	Total	Variance	Total	Variance
Trustee Area No. 1	647	0.5%	678	0.2%
Trustee Area No. 2	616	-4.3%	577	-14.7%
Trustee Area No. 3	671	4.2%	812	20.0%
Trustee Area No. 4	650	0.9%	552	-18.4%
Trustee Area No. 5	636	-1.2%	763	12.8%
<b>Total Population</b>	<b>3,220</b>	<b>8.5%</b>	<b>3,382</b>	<b>38.4%</b>

## ▶ DISTRICT DEMOGRAPHICS 2020 CENSUS DATA



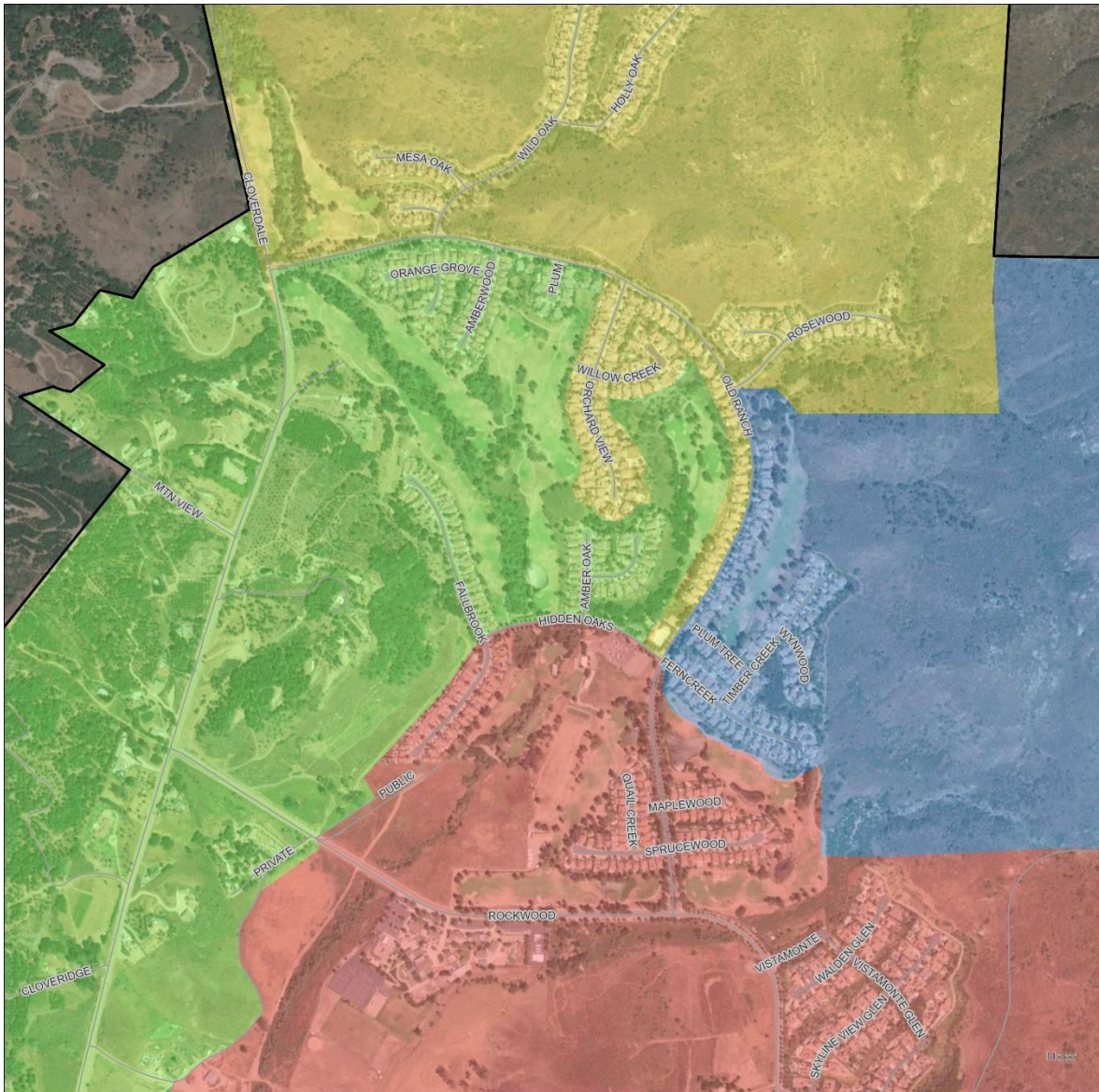
Population	Total Population		Age 18 +	
	Total	%	Total	%
Hispanic/Latino	715	21.1%	453	18.2%
White	2,230	65.9%	1,739	69.8%
Black/ African American	43	1.3%	24	1.0%
American Indian/Alaska Native	20	0.6%	8	0.3%
Asian	168	5.0%	124	5.0%
Native Hawaiian/ Pacific Islander	6	0.2%	4	0.2%
Other	13	0.4%	10	0.4%
Two or More Races	187	5.5%	130	5.2%
<b>Total Population</b>	<b>3,382</b>	<b>100%</b>	<b>2,492</b>	<b>100%</b>

► DISTRICT DEMOGRAPHICS  
**HISPANIC CITIZEN VOTING AGE POPULATION ESTIMATES**

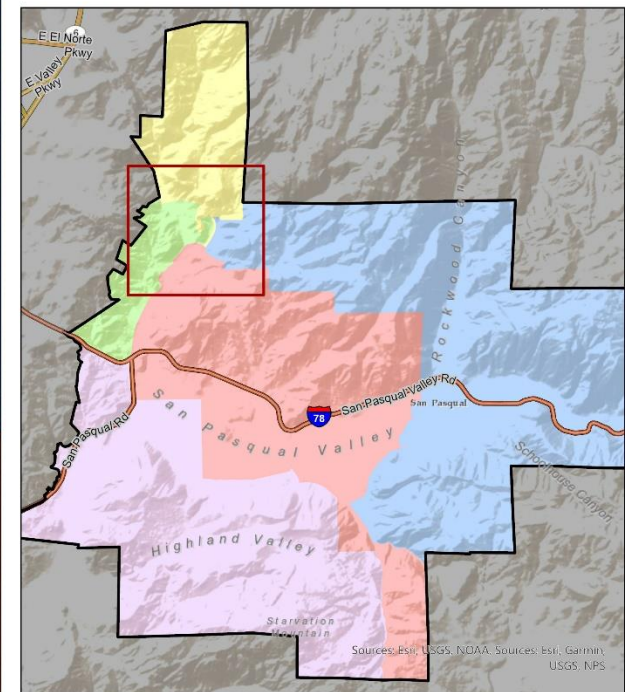


Population	CVAP 2015-2019	
	Total	%
Hispanic/Latino	297	14.4%
White	1,487	72.2%
Black/ African American	23	1.1%
American Indian/Alaska Native	0	0.0%
Asian	178	8.6%
Native Hawaiian/ Pacific Islander	0	0.0%
Two or More Races	75	3.6%
<b>Total Population</b>	<b>2,060</b>	<b>100%</b>

# ▶ CURRENT TRUSTEE AREAS



San Pasqual USD  
 Neighboring School Districts  
**San Pasqual USD Trustee Areas**  
 Trustree Area No. 1  
 Trustree Area No. 2  
 Trustree Area No. 3  
 Trustree Area No. 4  
 Trustree Area No. 5



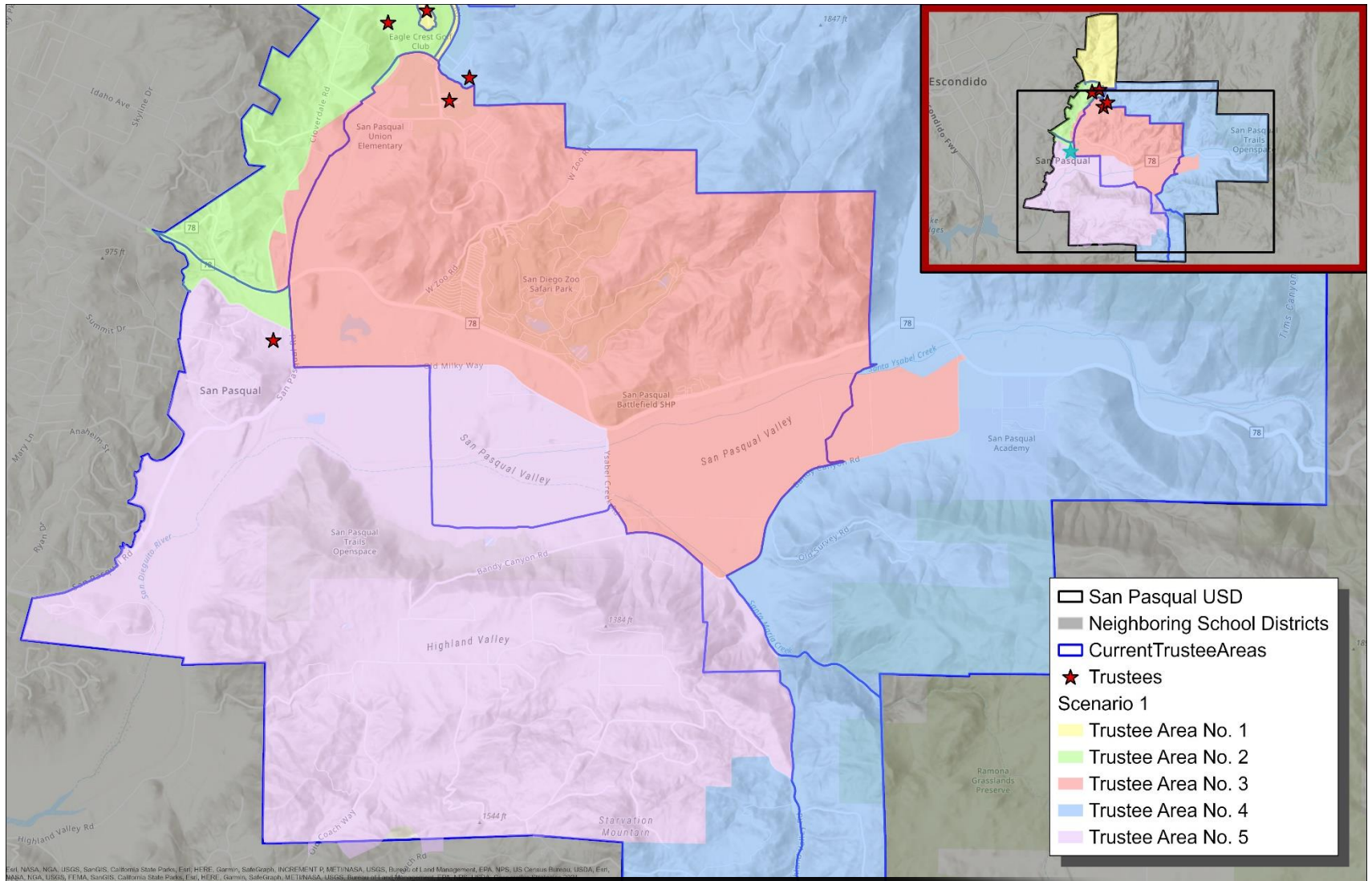
## ► DISTRICT DEMOGRAPHICS SCENARIO 1



- Scenario 1 was drawn in consideration of:
  - Balancing out the populations in all Trustee Areas
  - Reducing the variance below 10%
  - Minimizing the reassignment of census blocks
  - Respecting Incumbency
  - Preserving a high percentage of Hispanic/Latino CVAP in Trustee Areas 2, 3, 4, and 5 and Asian CVAP in Trustee Area 1
- The overall variance decreased from 38.4% to 7.7%

Trustee Area	2020 Census		Scenario 2	
	Total	Variance	Total	Variance
Trustee Area 1	678	0.3%	678	0.3%
Trustee Area 2	577	-14.7%	653	-3.4%
Trustee Area 3	812	20.0%	705	4.3%
Trustee Area 4	552	-18.4%	670	-0.9%
Trustee Area 5	763	12.8%	676	0.0%
<b>Total</b>	<b>3,382</b>	<b>38.4%</b>	<b>3,382</b>	<b>7.7%</b>

# ▶ CONCEPTUAL TRUSTEE AREAS SCENARIO 1





► **DEMOGRAPHICS**  
**SCENARIO 1**

<b>Total Population:</b>	<b>3,382</b>	<b>Ideal Trustee Area Size:</b>	<b>676</b>	<b>Variance:</b>	<b>7.7%</b>
--------------------------	--------------	---------------------------------	------------	------------------	-------------

<b>TRUSTEE AREA</b>	<b>Trustee Area 1</b>		<b>Trustee Area 2</b>		<b>Trustee Area 3</b>		<b>Trustee Area 4</b>		<b>Trustee Area 5</b>	
<b>TP* vs. CVAP**</b>	<b>TP</b>	<b>CVAP</b>	<b>TP</b>	<b>CVAP</b>	<b>TP</b>	<b>CVAP</b>	<b>TP</b>	<b>CVAP</b>	<b>TP</b>	<b>CVAP</b>
Population	678	420	653	454	705	387	670	361	676	438
Population Variance	0.3%	N/A	-3.4%	N/A	4.3%	N/A	-0.9%	N/A	0.0%	N/A
Hispanic/Latino	14.6%	8.6%	19.4%	16.7%	25.8%	16.0%	29.0%	16.3%	16.7%	14.6%
White	73.0%	77.6%	70.4%	67.8%	60.0%	66.1%	56.1%	70.1%	70.4%	78.5%
Black/African American	0.3%	0.7%	0.8%	0.7%	1.0%	1.8%	3.6%	2.8%	0.7%	0.0%
American Indian/Alaska Native	0.6%	0.0%	0.5%	0.0%	1.0%	0.0%	0.1%	0.0%	0.7%	0.0%
Asian	5.8%	11.0%	4.0%	8.6%	6.7%	15.2%	4.2%	7.5%	4.1%	1.6%
Native Hawaiian/Other Pacific Islander	0.1%	0.0%	0.0%	0.0%	0.0%	0.0%	0.3%	0.0%	0.4%	0.0%
Other	0.0%	0.0%	0.0%	0.2%	0.3%	0.5%	0.6%	0.8%	1.0%	0.9%
Two or More Races	5.5%	1.9%	5.1%	6.2%	5.2%	1.3%	6.1%	3.0%	5.8%	5.3%

## ▶ DISTRICT DEMOGRAPHICS SCENARIO 2

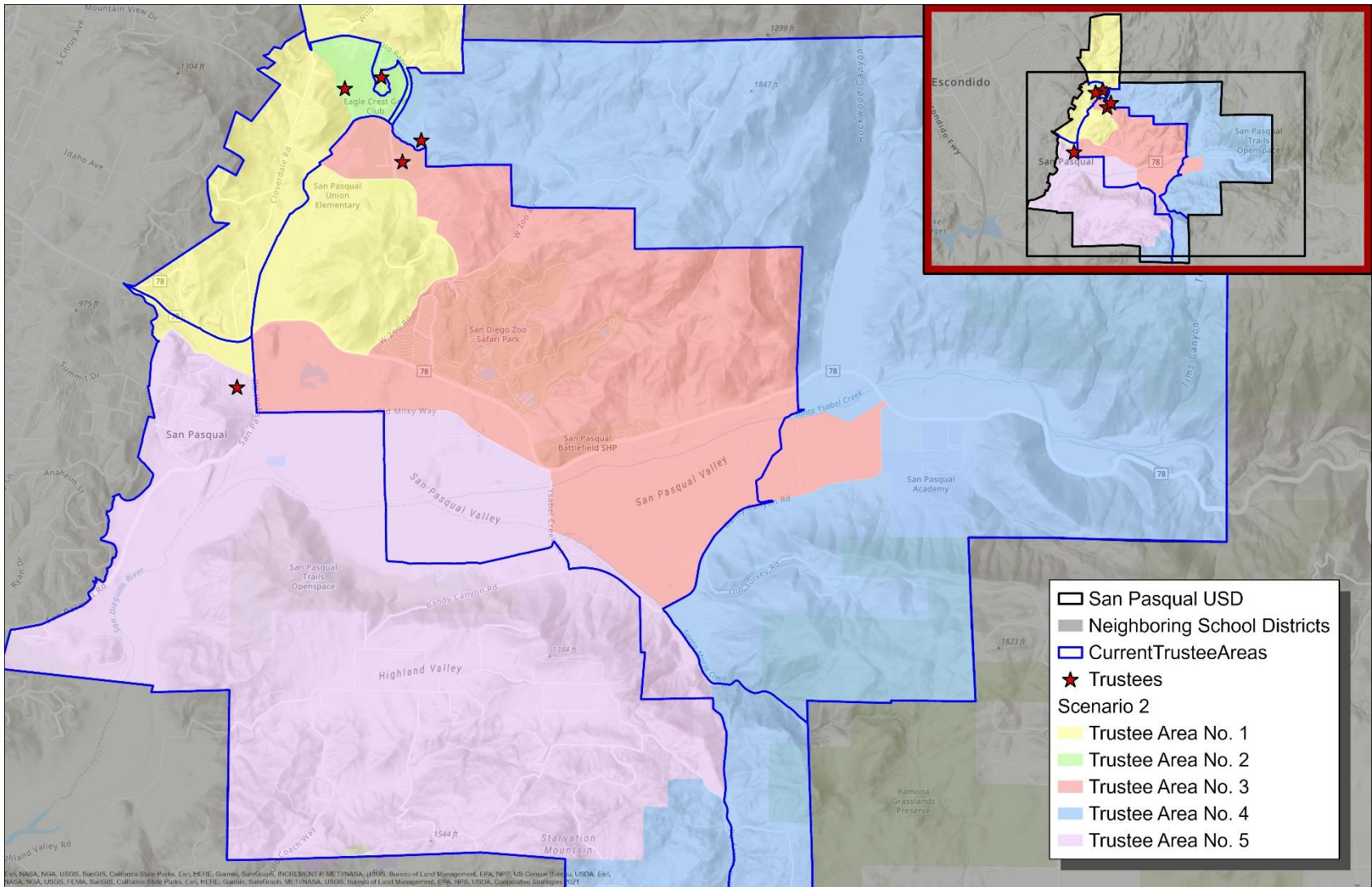


- Scenario 2 was drawn in consideration of:
  - Balancing out the populations in all Trustee Areas
  - Reducing the variance below 5%
  - Preserving a high percentage of Hispanic/Latino CVAP in 4 Trustee Areas and Asian CVAP in 1
- The overall variance decreased from 38.4% to 3.0%

Trustee Area	2020 Census		Scenario 3	
	Total	Variance	Total	Variance
Trustee Area 1	678	0.3%	674	-0.3%
Trustee Area 2	577	-14.7%	672	-0.6%
Trustee Area 3	812	20.0%	676	0.0%
Trustee Area 4	552	-18.4%	670	-0.9%
Trustee Area 5	763	12.8%	690	2.1%
<b>Total</b>	<b>3,382</b>	<b>38.4%</b>	<b>3,382</b>	<b>3.0%</b>

# ▶ CONCEPTUAL TRUSTEE AREAS

## SCENARIO 2



Esri, NADA, NOAA, USGS, SanGIS, California State Parks, Esri, HERE, Garmin, SwireCity, INCREMENT P, META, NASSA, USBR, Bureau of Land Management, EPA, NPS, US Census Bureau, USDA, Esri, NOAA, NOAA, USGS, FEMA, SanGIS, California State Parks, Esri, HERE, Garmin, SwireCity, META, NASSA, USBR, Bureau of Land Management, EPA, NPS, USDA, Cooperation, State of CA

► **DEMOGRAPHICS**  
**SCENARIO 2**

<b>Total Population:</b>	<b>3,382</b>	<b>Ideal Trustee Area Size:</b>	<b>676</b>	<b>Variance:</b>	<b>3.0%</b>
--------------------------	--------------	---------------------------------	------------	------------------	-------------

<b>TRUSTEE AREA</b>	<b>Trustee Area 1</b>		<b>Trustee Area 2</b>		<b>Trustee Area 3</b>		<b>Trustee Area 4</b>		<b>Trustee Area 5</b>	
<b>TP* vs. CVAP**</b>	<b>TP</b>	<b>CVAP</b>	<b>TP</b>	<b>CVAP</b>	<b>TP</b>	<b>CVAP</b>	<b>TP</b>	<b>CVAP</b>	<b>TP</b>	<b>CVAP</b>
Population	674	455	672	430	676	372	670	361	690	442
Population Variance	-0.3%	N/A	-0.6%	N/A	0.0%	N/A	-0.9%	N/A	2.1%	N/A
Hispanic/Latino	24.0%	<b>18.0%</b>	9.7%	<b>7.0%</b>	24.9%	<b>15.6%</b>	29.0%	<b>16.3%</b>	18.3%	<b>15.4%</b>
White	61.7%	<b>63.3%</b>	79.6%	<b>79.1%</b>	63.2%	<b>70.4%</b>	56.1%	<b>70.1%</b>	69.0%	<b>77.8%</b>
Black/African American	0.6%	<b>0.2%</b>	0.6%	<b>1.2%</b>	0.9%	<b>1.9%</b>	3.6%	<b>2.8%</b>	0.7%	<b>0.0%</b>
American Indian/Alaska Native	0.6%	<b>0.0%</b>	0.4%	<b>0.0%</b>	0.9%	<b>0.0%</b>	0.1%	<b>0.0%</b>	0.9%	<b>0.0%</b>
Asian	6.7%	<b>11.0%</b>	4.8%	<b>11.9%</b>	5.2%	<b>11.6%</b>	4.2%	<b>7.5%</b>	4.1%	<b>1.6%</b>
Native Hawaiian/Other Pacific Islander	0.1%	<b>0.0%</b>	0.0%	<b>0.0%</b>	0.0%	<b>0.0%</b>	0.3%	<b>0.0%</b>	0.4%	<b>0.0%</b>
Other	0.1%	<b>0.0%</b>	0.0%	<b>0.2%</b>	0.1%	<b>0.5%</b>	0.6%	<b>0.8%</b>	1.0%	<b>0.9%</b>
Two or More Races	6.1%	<b>7.3%</b>	4.9%	<b>1.2%</b>	4.9%	<b>0.8%</b>	6.1%	<b>3.0%</b>	5.7%	<b>5.2%</b>

## ► DISTRICT DEMOGRAPHICS SCENARIO 3

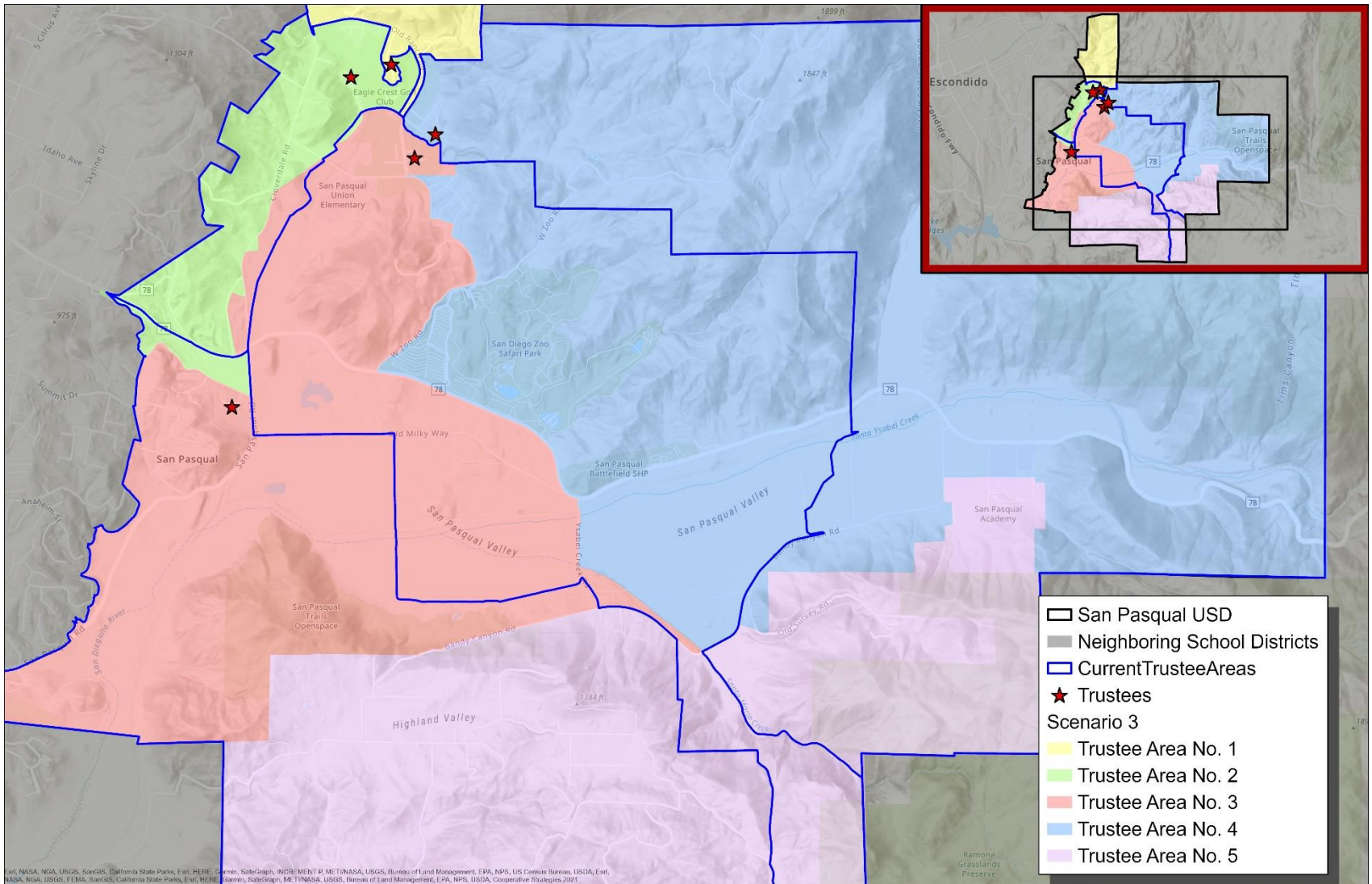


- Scenario 3 was drawn in consideration of:
  - Balancing out the populations in all Trustee Areas
  - Reducing the variance below 10%
  - Preserving a high percentage of Hispanic/Latino CVAP in Trustee Areas 2, 3, 4, and 5 and Asian CVAP in Trustee Area 1
- The overall variance decreased from 38.4% to 6.7%

Trustee Area	2020 Census		Scenario 1	
	Total	Variance	Total	Variance
Trustee Area 1	678	0.3%	678	0.3%
Trustee Area 2	577	-14.7%	653	-3.4%
Trustee Area 3	812	20.0%	676	0.0%
Trustee Area 4	552	-18.4%	677	0.1%
Trustee Area 5	763	12.8%	698	3.3%
<b>Total</b>	<b>3,382</b>	<b>38.4%</b>	<b>3,382</b>	<b>6.7%</b>

# ▶ CONCEPTUAL TRUSTEE AREAS

## SCENARIO 3



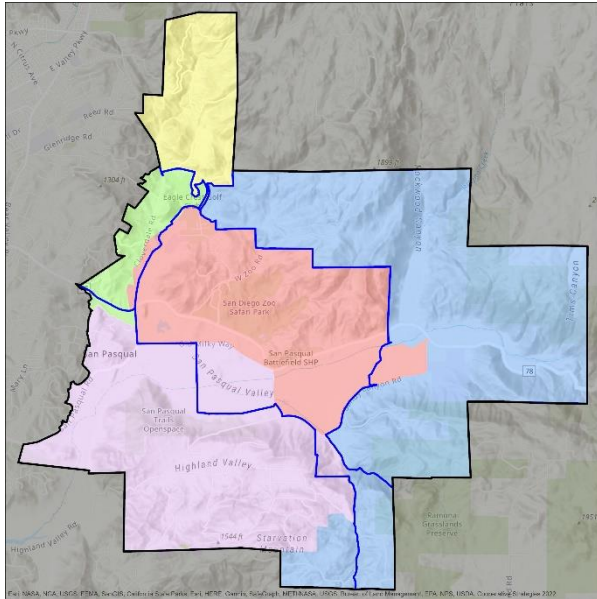
► **DEMOGRAPHICS**  
**SCENARIO 3**

<b>Total Population:</b>	<b>3,382</b>	<b>Ideal Trustee Area Size:</b>	<b>676</b>	<b>Variance:</b>	<b>6.7%</b>
--------------------------	--------------	---------------------------------	------------	------------------	-------------

<b>TRUSTEE AREA</b>	<b>Trustee Area 1</b>		<b>Trustee Area 2</b>		<b>Trustee Area 3</b>		<b>Trustee Area 4</b>		<b>Trustee Area 5</b>	
<b>TP* vs. CVAP**</b>	<b>TP</b>	<b>CVAP</b>	<b>TP</b>	<b>CVAP</b>	<b>TP</b>	<b>CVAP</b>	<b>TP</b>	<b>CVAP</b>	<b>TP</b>	<b>CVAP</b>
Population	678	420	653	454	676	407	677	382	698	397
Population Variance	0.3%	N/A	-3.4%	N/A	0.0%	N/A	0.1%	N/A	3.3%	N/A
Hispanic/Latino	14.6%	8.6%	19.4%	16.7%	21.7%	16.2%	25.7%	14.1%	24.1%	16.4%
White	73.0%	77.6%	70.4%	67.8%	64.6%	71.3%	59.5%	67.8%	62.3%	76.6%
Black/African American	0.3%	0.7%	0.8%	0.7%	0.7%	0.0%	0.9%	1.8%	3.6%	2.5%
American Indian/Alaska Native	0.6%	0.0%	0.5%	0.0%	1.2%	0.0%	0.6%	0.0%	0.1%	0.0%
Asian	5.8%	11.0%	4.0%	8.6%	6.2%	8.8%	6.8%	14.1%	2.1%	0.8%
Native Hawaiian/Other Pacific Islander	0.1%	0.0%	0.0%	0.0%	0.0%	0.0%	0.3%	0.0%	0.4%	0.0%
Other	0.0%	0.0%	0.0%	0.2%	0.3%	0.5%	0.1%	0.8%	1.4%	0.8%
Two or More Races	5.5%	1.9%	5.1%	6.2%	5.2%	4.2%	6.1%	1.8%	5.9%	3.8%

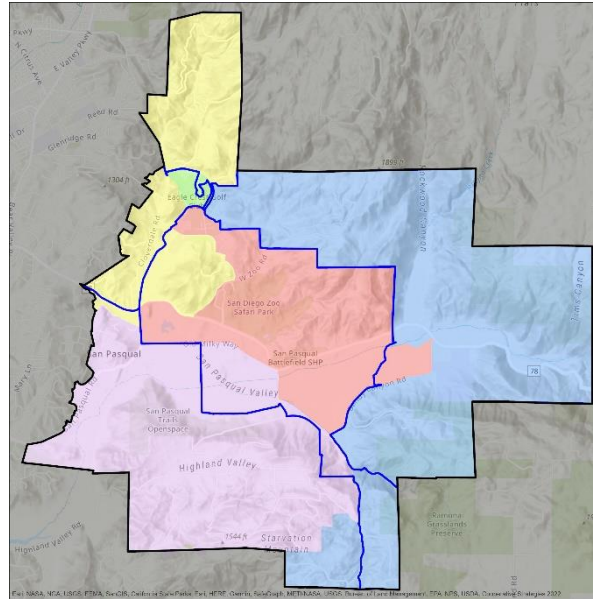
# ▶ CONCEPTUAL TRUSTEE AREAS

## SCENARIO 1



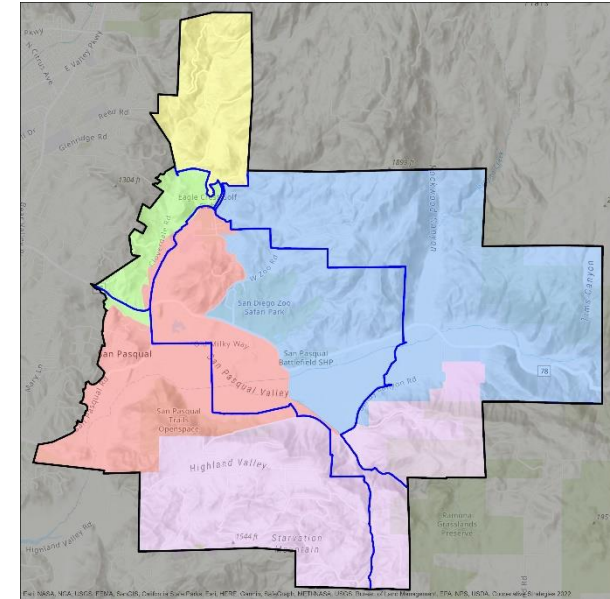
**VARIANCE: 7.7%**

## SCENARIO 2



**VARIANCE: 3.0%**

## SCENARIO 3



**VARIANCE: 6.7%**





QUESTIONS