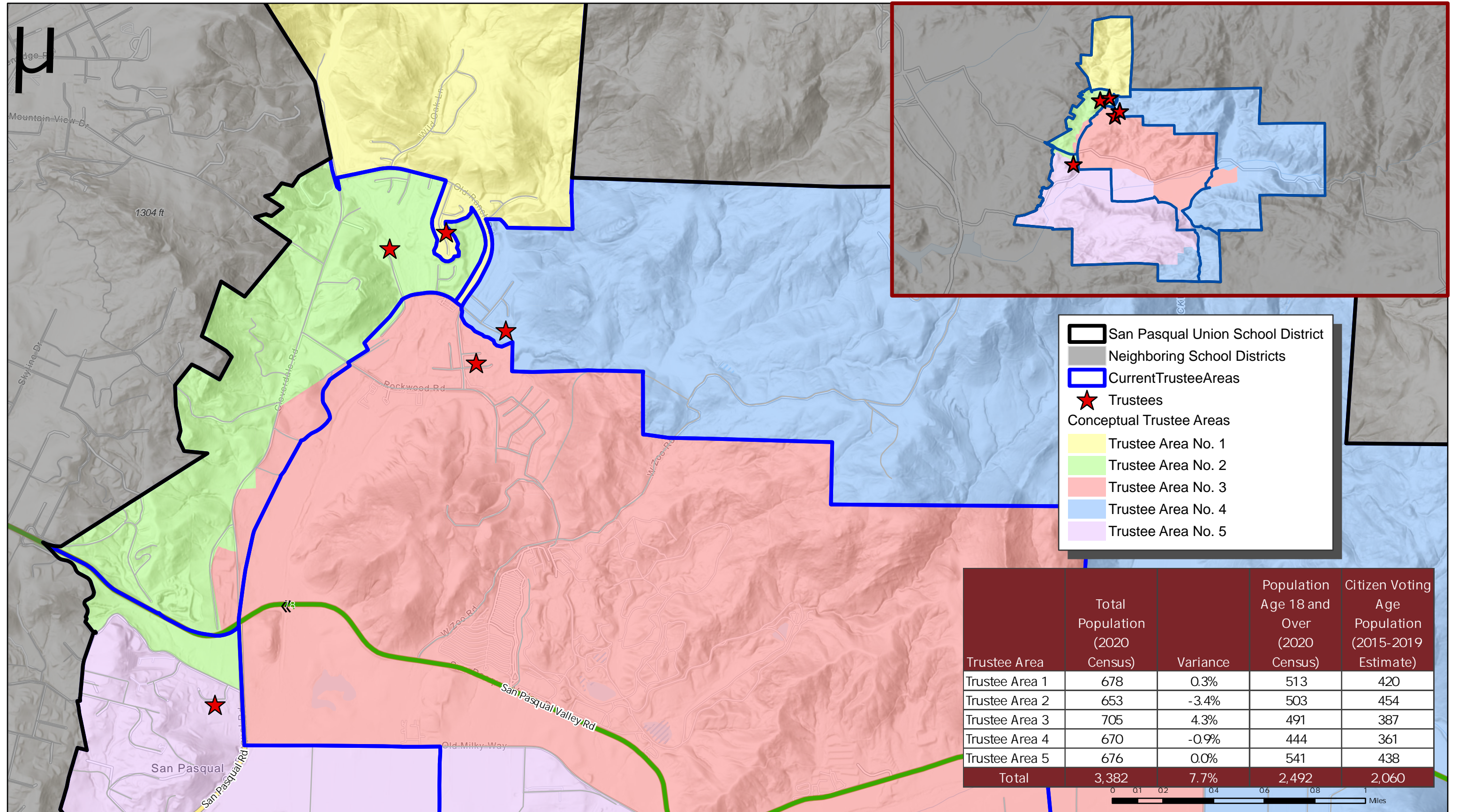


SAN PASQUAL UNION SCHOOL DISTRICT

CONCEPTUAL TRUSTEE AREAS - SCENARIO 1



SAN PASQUAL UNION SCHOOL DISTRICT

CONCEPTUAL TRUSTEE AREAS - SCENARIO 1

Total Population:	3,382	Ideal Population:	676	Variance:	7.7%
--------------------------	--------------	--------------------------	------------	------------------	-------------

Total Population (2020 Census)					
	Trustee Area 1	Trustee Area 2	Trustee Area 3	Trustee Area 4	Trustee Area 5
Population	678	653	705	670	676
Population Variance	0.3%	-3.4%	4.3%	-0.9%	0.0%
Hispanic/Latino	14.6%	19.4%	25.8%	29.0%	16.7%
White	73.0%	70.4%	60.0%	56.1%	70.4%
Black/ African American	0.3%	0.8%	1.0%	3.6%	0.7%
American Indian/ Alaska Native	0.6%	0.5%	1.0%	0.1%	0.7%
Asian	5.8%	4.0%	6.7%	4.2%	4.1%
Native Hawaiian/ Other Pacific Islander	0.1%	0.0%	0.0%	0.3%	0.4%
Other	0.0%	0.0%	0.3%	0.6%	1.0%
Two or More Races	5.5%	5.1%	5.2%	6.1%	5.8%

Population 18 and Over (2020 Census)					
	Trustee Area 1	Trustee Area 2	Trustee Area 3	Trustee Area 4	Trustee Area 5
Population	513	503	491	444	541
Hispanic/Latino	12.1%	17.5%	22.8%	22.5%	16.8%
White	76.6%	71.8%	62.9%	64.4%	72.1%
Black/ African American	0.4%	0.8%	1.0%	1.8%	0.9%
American Indian/ Alaska Native	0.2%	0.6%	0.4%	0.2%	0.2%
Asian	5.5%	5.2%	7.1%	3.6%	3.5%
Native Hawaiian/ Other Pacific Islander	0.2%	0.0%	0.0%	0.2%	0.4%
Other	0.0%	0.0%	0.4%	0.7%	0.9%
Two or More Races	5.1%	4.2%	5.3%	6.5%	5.2%

Citizens by Voting Age Population Estimate (2015-2019)					
	Trustee Area 1	Trustee Area 2	Trustee Area 3	Trustee Area 4	Trustee Area 5
Population	420	454	387	361	438
Hispanic/Latino	8.6%	16.7%	16.0%	16.3%	14.6%
White	77.6%	67.8%	66.1%	70.1%	78.5%
Black/ African American	0.7%	0.7%	1.8%	2.8%	0.0%
American Indian/ Alaska Native	0.0%	0.0%	0.0%	0.0%	0.0%
Asian	11.0%	8.6%	15.2%	7.5%	1.6%
Native Hawaiian/ Other Pacific Islander	0.0%	0.0%	0.0%	0.0%	0.0%
Other	0.0%	0.2%	0.5%	0.8%	0.7%
Two or More Races	1.9%	6.2%	1.3%	3.0%	5.3%