



Elgin ISD Elementary School #4

concept | meeting #3

March 30, 2022

pfluger



Establishing the Vision

- Define Goals and Objectives
- Identify Problems to Solve Project
- Visualization
- Precedents
- Partnerships
- Tours

Shaping the Building

- Guiding Principles
- Program Verification
- Program block Options
- Workshops
- Story Telling

Sculpting the Environment

- Charrette
- Conceptual design
- Project Visualization

Agenda

1	Guiding Principles	10 min
2	Overview of Visual Scale	10 min
3	Program Overview	10 min
4	Concepts	60 min

Padlet

We will be using Padlet throughout the project to share and collaborate in the design process. Please use it to *share ideas, comment and share between yourselves and the design team*. We will be posting to it regularly, so stay tuned and feel free to add and engage further in the conversation.

https://padlet.com/garrett62/elgin_isd_4



Guiding Principles

1 **Caring** **Space**

Humans on guard cannot take new knowledge or ideas. We will create a physical, mental and emotional safe space for learners to thrive. We will create a caring physical environment where equality and freedom are key values and where people are allowed to be vulnerable.

2 **Sense of Community**

The aim of this project is to foster the sense of community to create a culture of trust, where learners feel safe to express themselves freely and try things out, fail, try again, and to continue to experiment and learn.

3

Collaborati on

at the center

Through working with others, we develop higher-level thinking skills, we learn faster, and we develop empathy and social skills. Therefore, we will create different spaces for learners to influence each other, meet up, create friendships, and join forces. Our school supports as many options of interaction and collaboration as possible: working alone, together, in small or bigger groups and in different constellations. We utilize design strategies that stimulate socializing, collaboration, and cooperation.

4

Connect to the

Outdoor

Nature stimulates imagination and provides a space that fosters and facilitates various kind of activities. In nature, we get exposed to all kinds of different sensory experiences that changes from time to time. Therefore, in designing our school, we focus on creating a strong connection between indoors and outdoors, making it easy and convenient to utilize the outdoor environment for various learning activities.

Visual Scale Exercise

Scale Exercise

What is your temperature on these different topics? Place one dot on your point in the scale where the photos above align with your vision for the space. Use one additional dot to indicate your favorite image!

Color coded:

Blue Dot



Administration

Yellow Dot



Educator

Green Dot



Community

Red Dot



Student

our **classrooms connection** to the **corridor**



our *learning* is adaptive



our **classrooms connection** to the **corridor**



our **classrooms** will be **flexible**



our **gym** will **provide**



our *students* will be hands on learners



our *library* will feel



our **cafeteria** will be **multipurpose**



our **learning** will be connected to the **outdoors**



our **school** environment will be **sustainable & healthy**

Program Overview

Features

Approximately 92,000 SF, one & two-story spaces

Site is 12.91 Acres in Harvest Ridge neighborhood

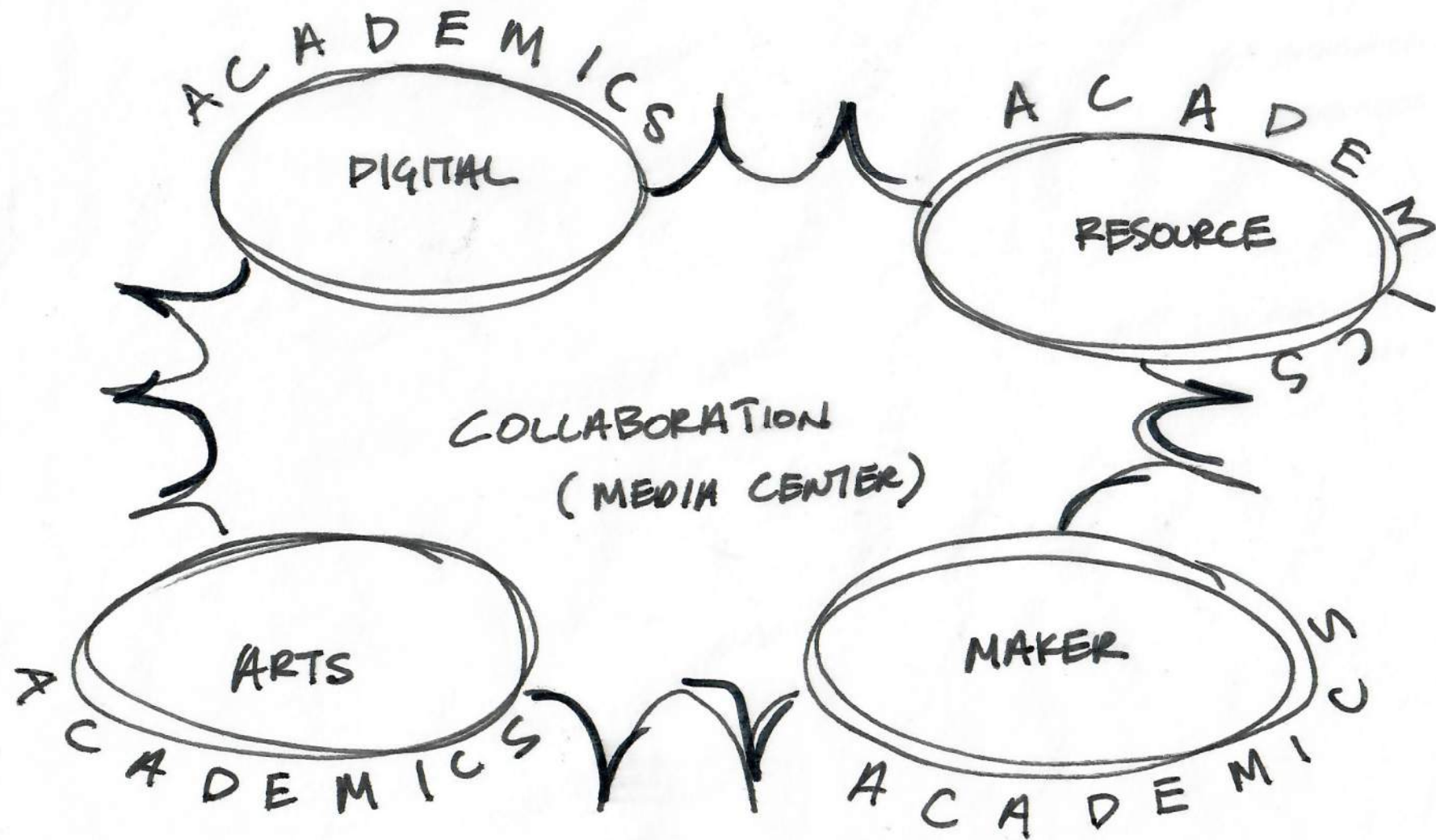
Designed for 800 Students / Core for 900 Students

Construction Budget: \$29,597,400

Open for Fall of 2024

Program Spaces	Totals					
	Capacity				Net Area	
	Staff	TS	Stud.		NSF	
01.00.000	Academics	40	40	871		35,060
02.00.000	Collaboration	0	0	0		0
03.00.000	Media Center	0	0	0		5,615
04.00.000	Science & Technology	0	0	0		0
05.00.000	Special Education	8	6	42		3,925
06.00.000	Performing & Fine Arts	2	2	0		2,600
07.00.000	Physical Ed & Athletics	1	0	0		4,920
08.00.000	Food Service	0	0	0		9,265
09.00.000	Administration	0	0	0		4,220
21.00.000	Support & Plant Services	0	0	0		1,020
Total Teaching Stations		51	48	913	TOTAL NET AREA	66,625
Total Net Unassignable(Grossing)						1.30
TOTAL GROSS AREA						86,613

Concepts



concept parti

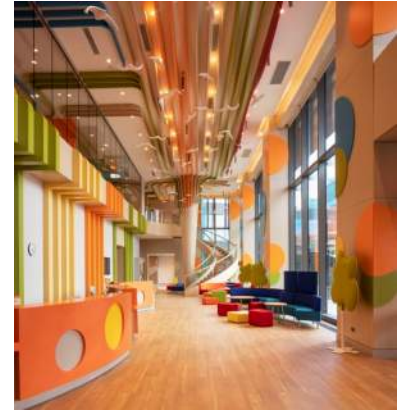
design aspiration



comfort

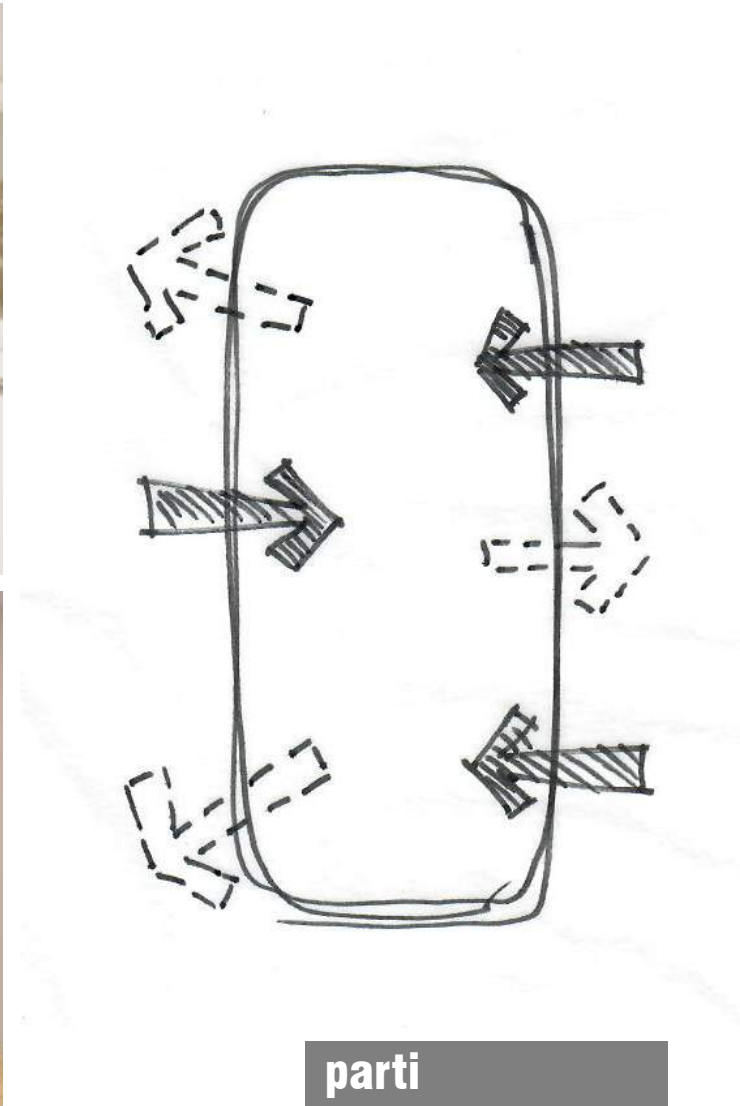


exploration

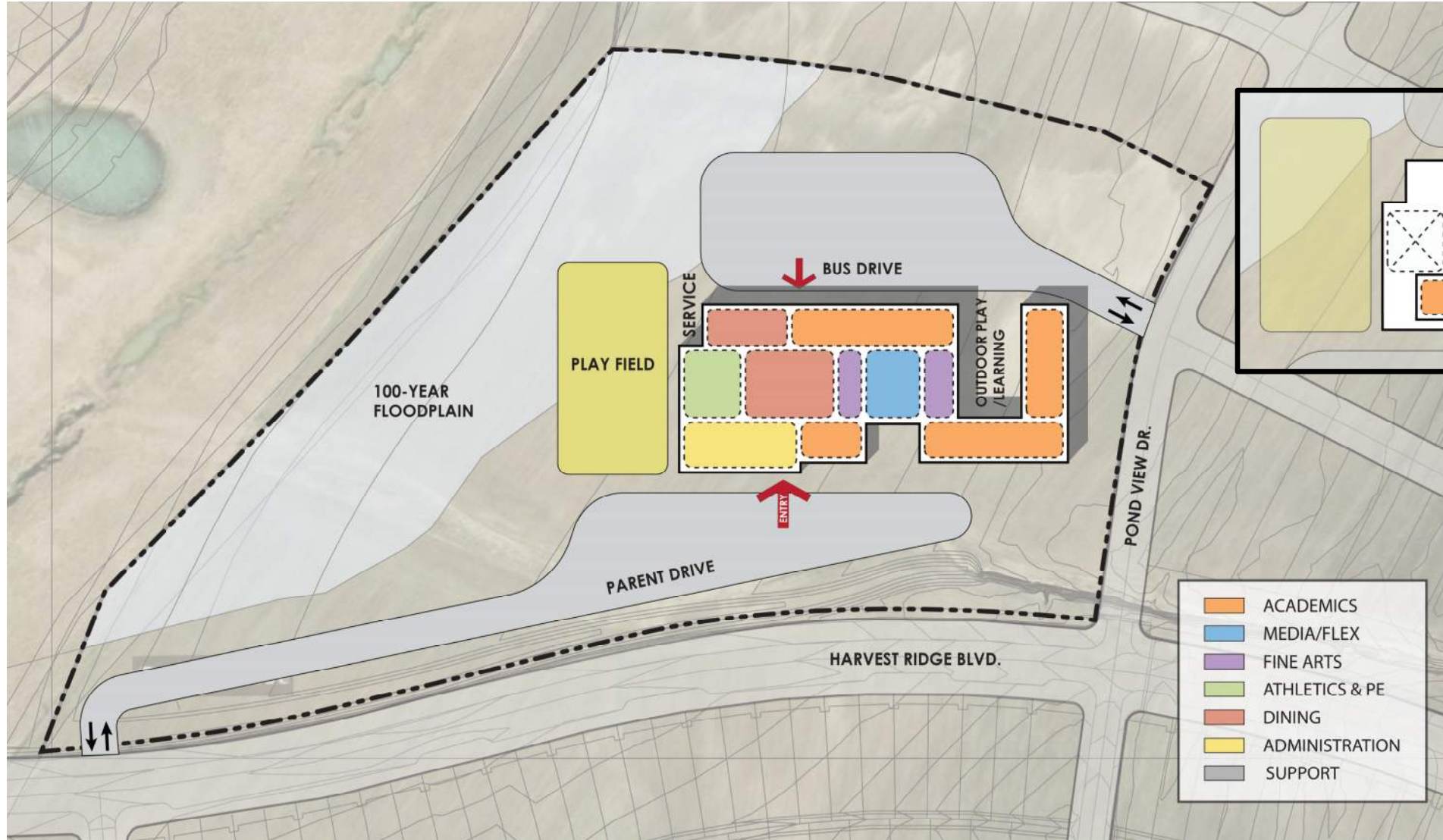


biophilia

Hearth



Hearth



second floor

first floor

Hearth









Hearth



Concept Summary

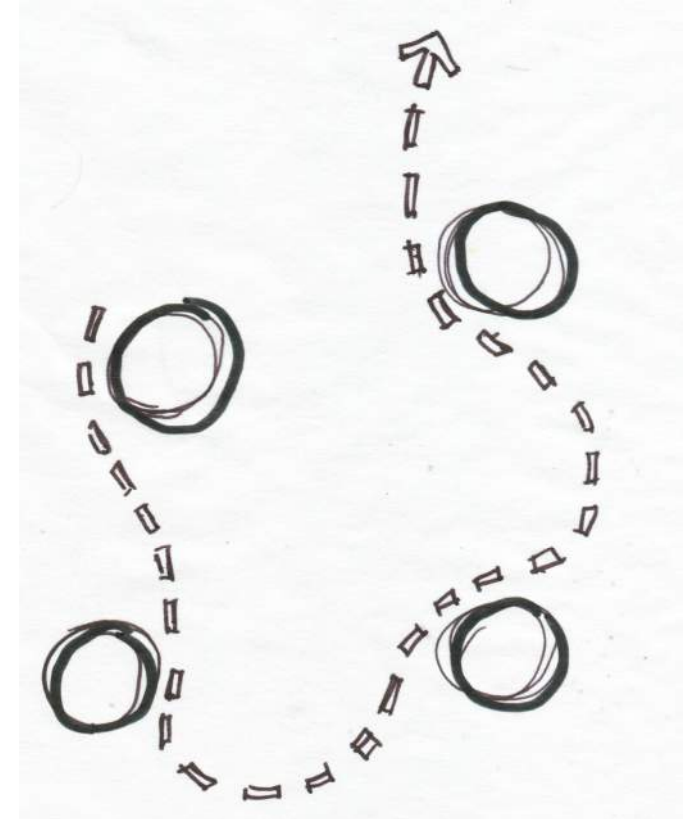
- Put shared/community spaces at the center of the campus
- Outdoor courtyards adjacent to academic spaces
- Cafeteria and Gym can combine for larger performance space
- Stage can face two directions depending on performance needs
- All academics have access to outdoors or community spaces to help facilitate collaboration



Provide feedback on **Padlet**

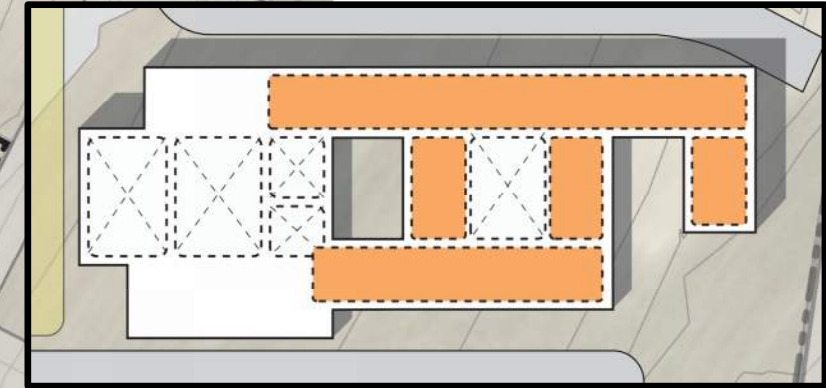
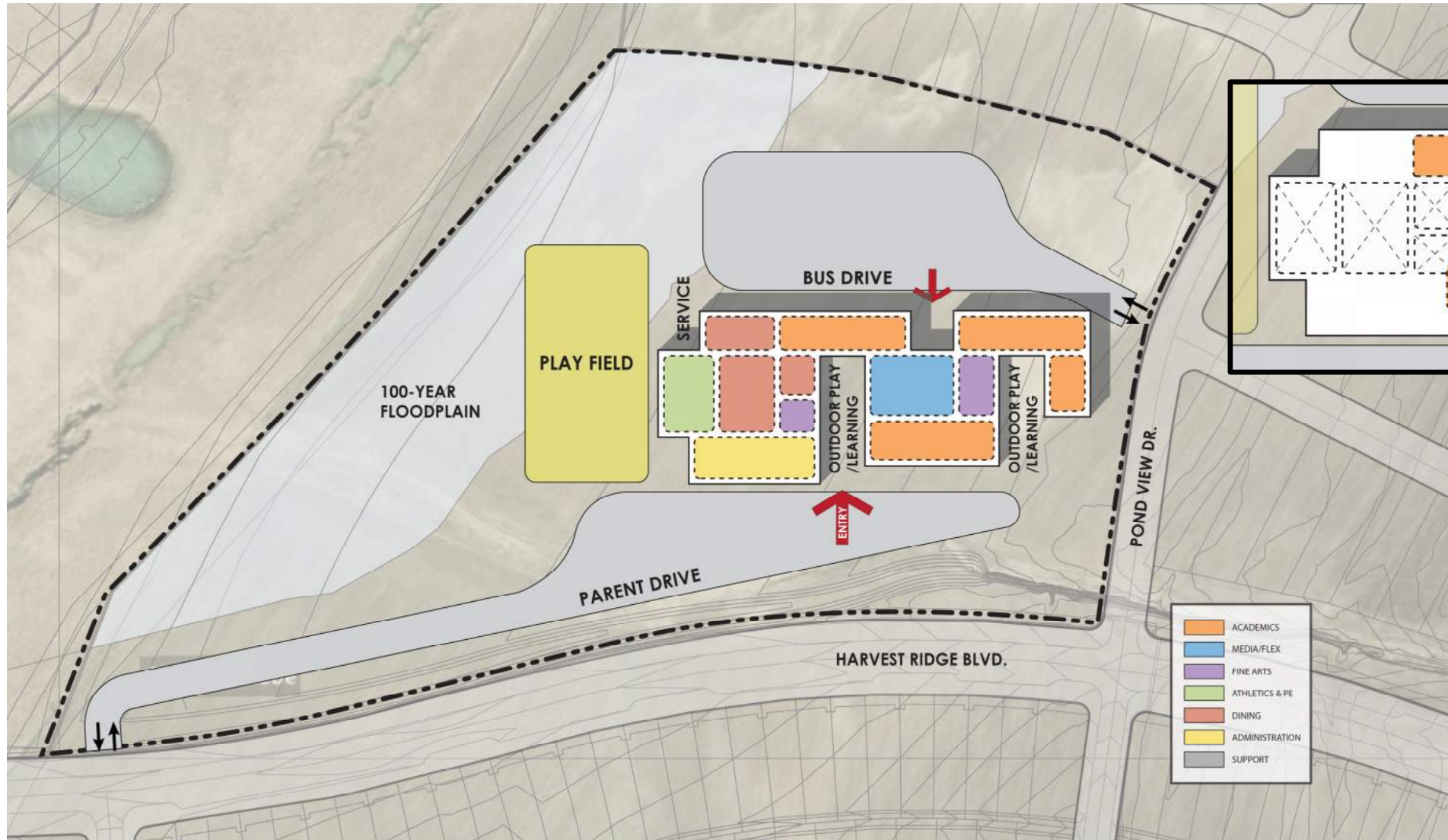
https://padlet.com/garrett62/elgin_isd_4

Journey



parti

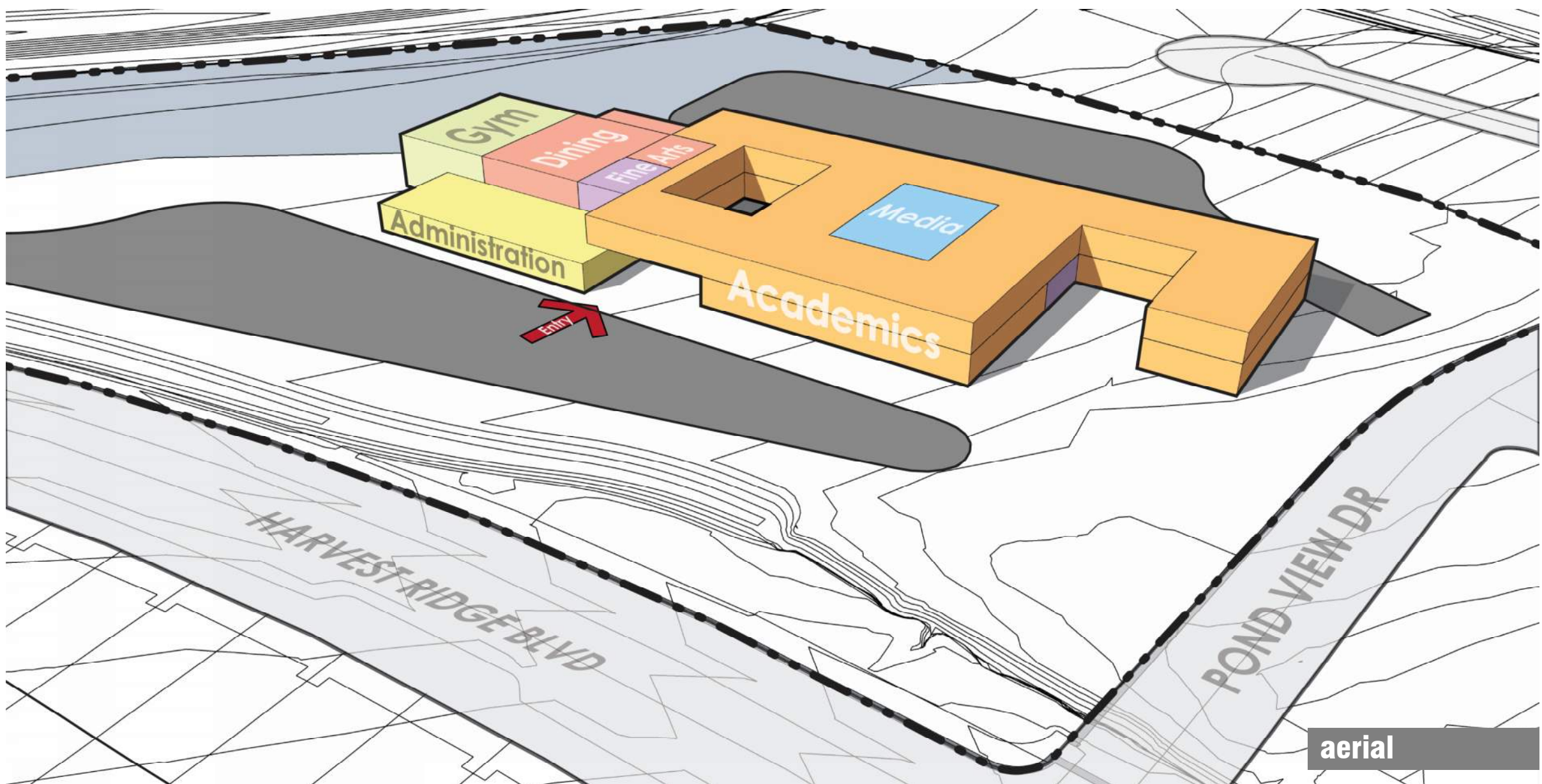
Journey



second floor

first floor

Journey

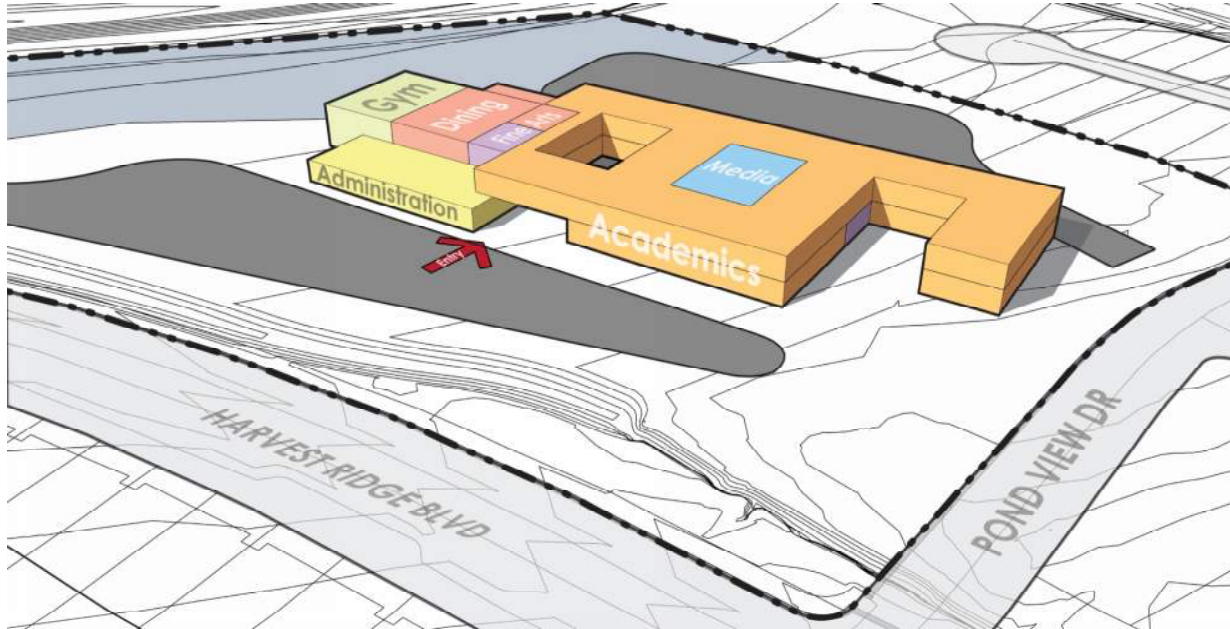








Journey



Concept Summary

- Organizes academics around media center and outdoor courtyards
- Cafeteria and Gym can combine for larger performance space
- Stage and Music together allow for more flexibility
- All academics have access to outdoors or community spaces to help facilitate collaboration



Provide feedback on **Padlet**

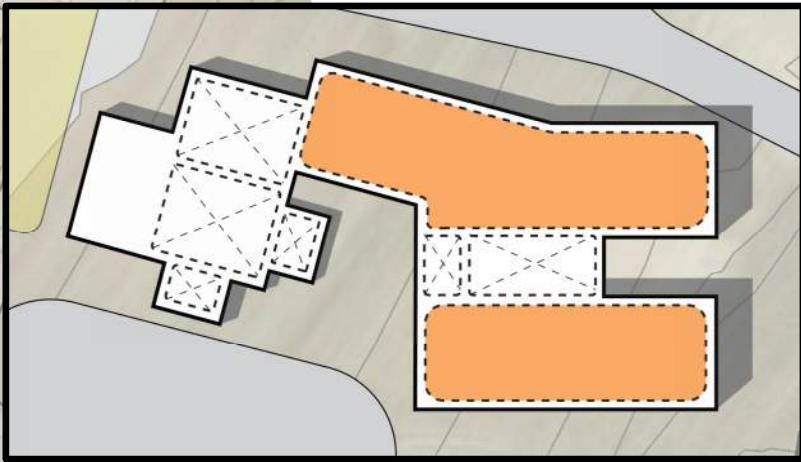
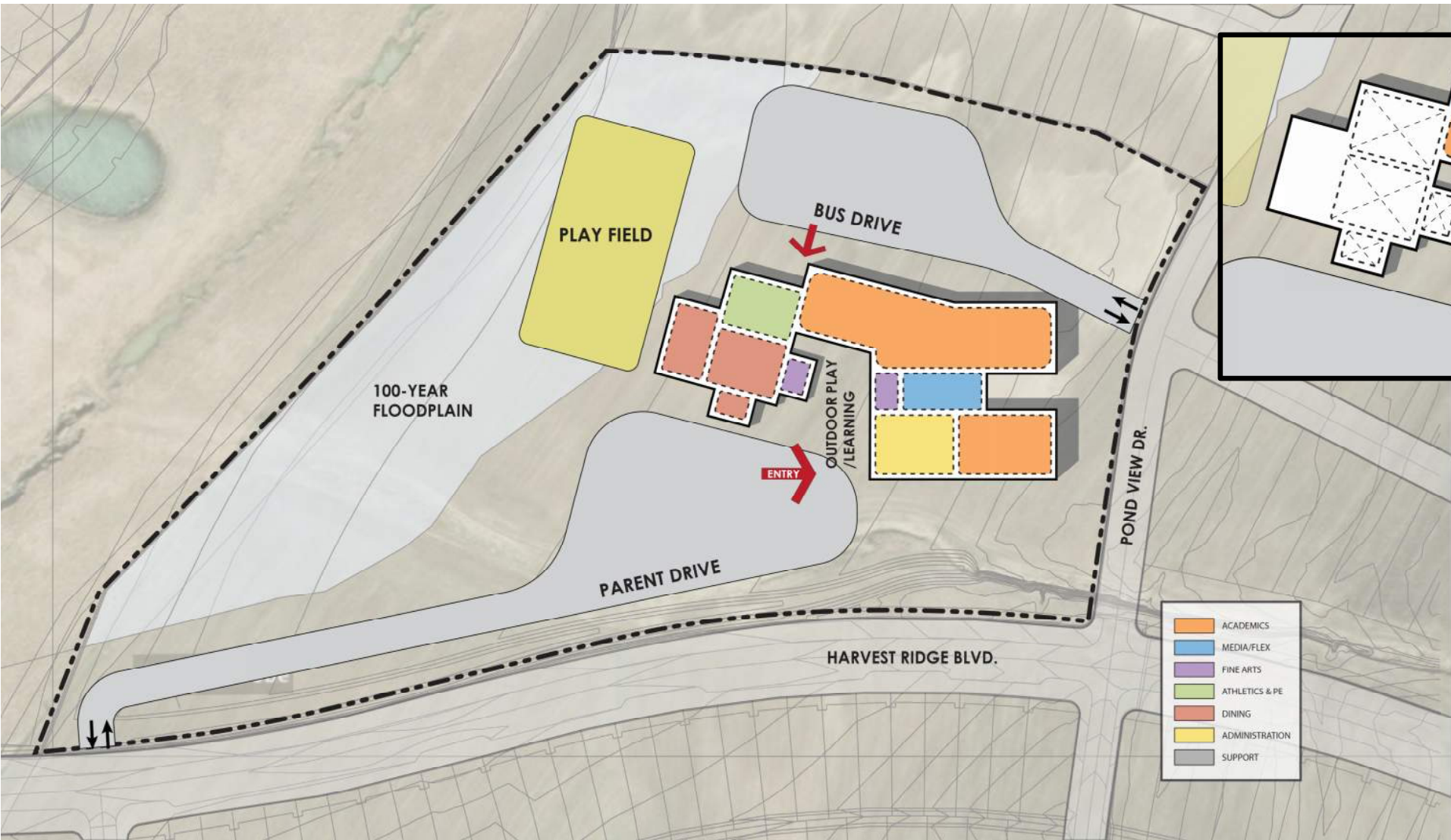
https://padlet.com/garrett62/elgin_isd_4

Patio



parti

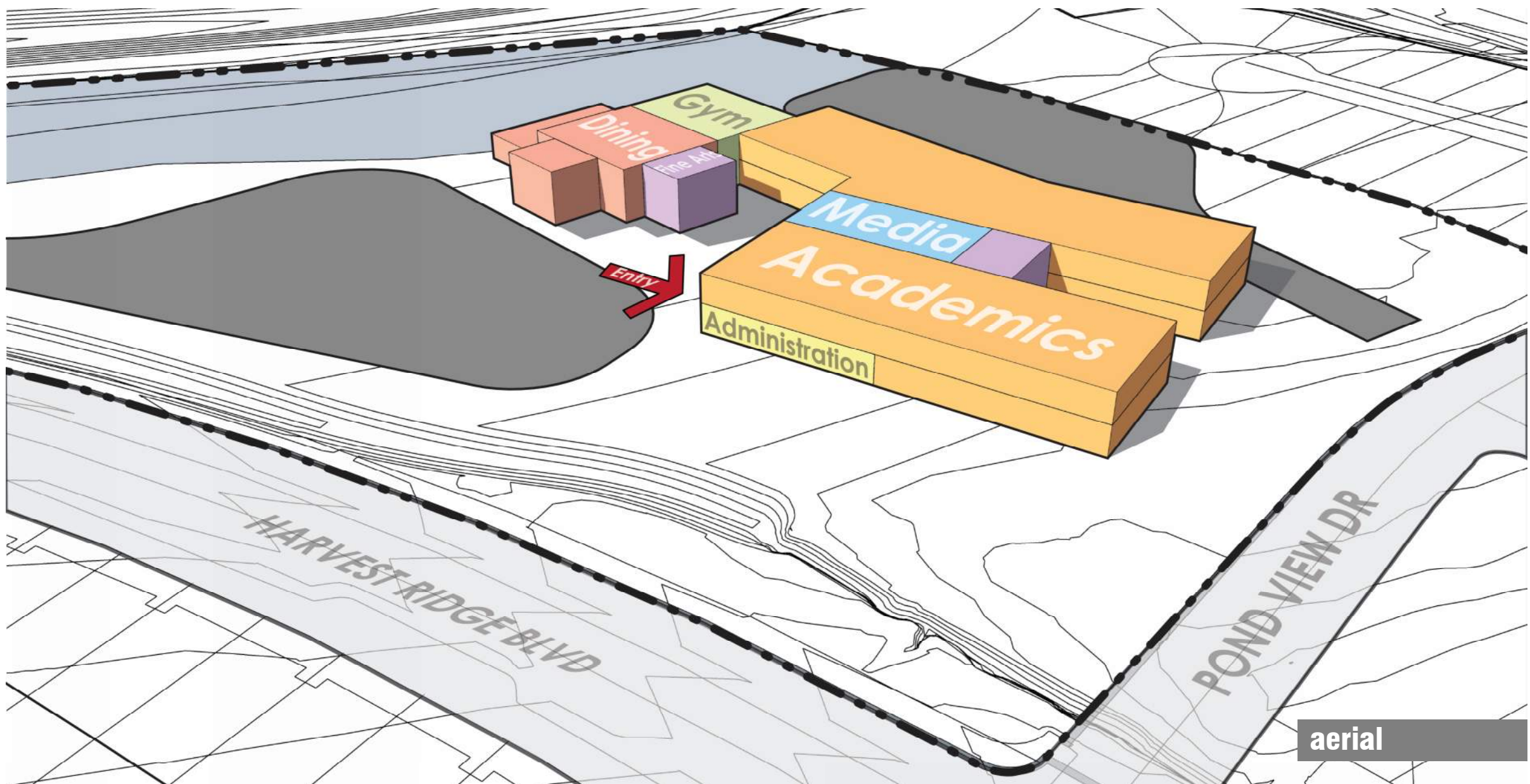
Patio



second floor

first floor

Patio











The more you read,
the more things you will know.
The more you learn,
the more places you will go.
Dr. Seuss

Porch



Concept Summary

- Organizes academics around media center
- Cafeteria and Gym can combine for larger performance space
- Stage and Music configuration allows for multiple types of performance opportunities
- Separates the academics of the campus more from the community dining and play spaces



Provide feedback on **Padlet**

https://padlet.com/garrett62/elgin_isd_4

Next Steps...

- Upcoming meetings
- Padlet feedback

