



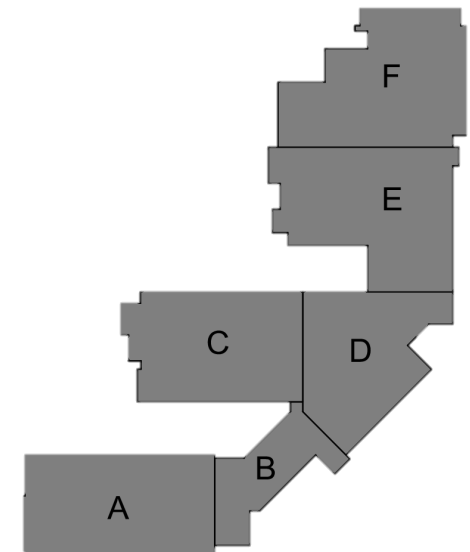
Mary E. Britton Middle School

➤ Completed Work:

- Completed ICF forms Area E (Storm Shelter). Pour 2/15/2024
- CMU Complete Area B
- CMU 95% Complete Area D
- Continuing Structural Steel Area A, Area C and Area D
- Roofing Insulation installing Area A with Ice/Water Shield
- Complete Area A Metal Stud Framing
- Continue Exterior Metal Stud Framing at Area A
- Caulking Masonry Control Joints
- Block Fill Complete at Gym and Locker Room
- Continue MEP and Sprinkler Rough-In multiple Buildings
- Geothermal Continuing at Underground

➤ Upcoming Work/Look Ahead:

- Complete ICF Area E
- Start ICF/Stala Area D (2pours expected)
- Finish Structural Steel over exterior stairs area A and C
- Continue Structural Steel at Cafeteria and stage
- Start CMU at Storm Shelter
- Continue Wood Blocking at roof lines
- Start Metal Stud Framing Area C Second floor and mezzanine
- Start roofing Area C
- Continue Block Fill at Area A
- Continue Masonry control joint caulking
- Continue MEP and Sprinkler Rough In
- Set Switch Gear in Mechanical Room
- Continue Underground installation of Geothermal



Mary E. Britton Middle School



Area A – End Wall Steel and Decking



Week Ending February 16, 2024

Mary E. Britton Middle School



Area B – Media Center Steel



Week Ending February 16, 2024

Mary E. Britton Middle School



Area C – Blocking at Roof Edge



Week Ending February 16, 2024

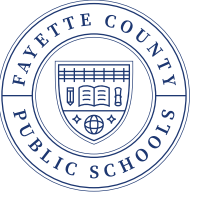
Mary E. Britton Middle School



Area C – Roof Framing at Stair Tower

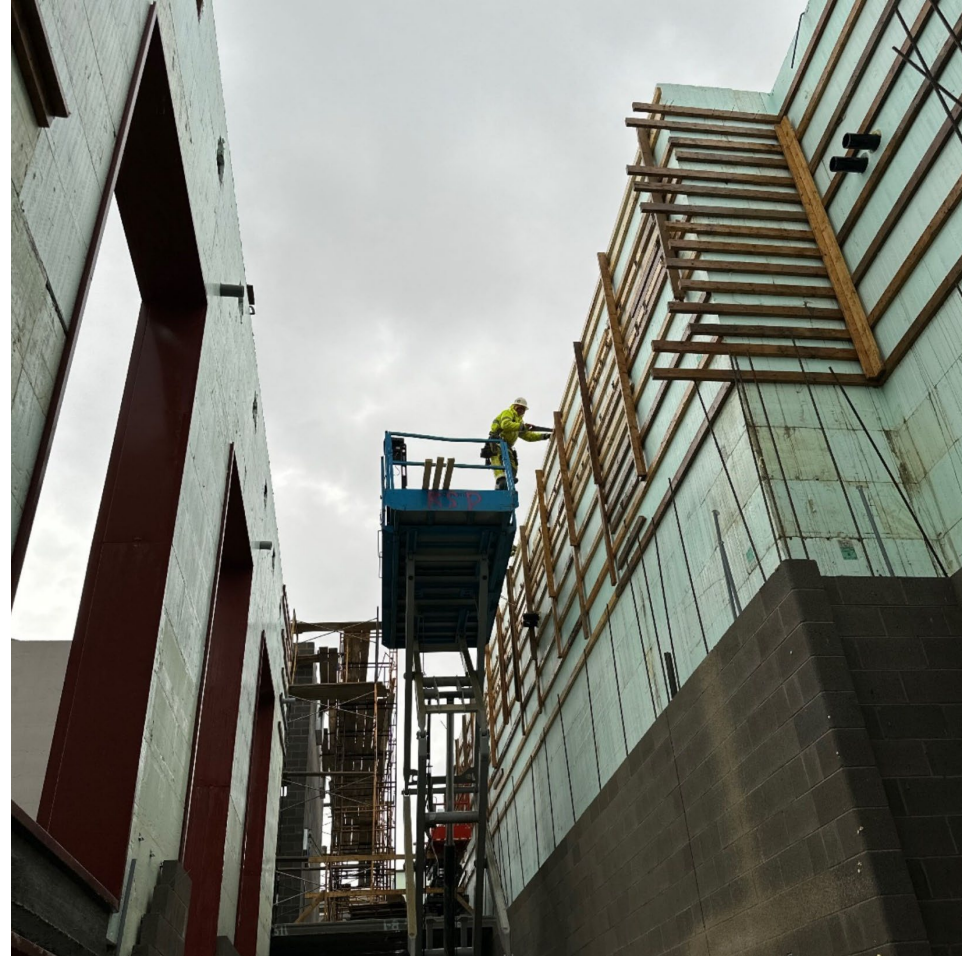


Week Ending February 16, 2024



Mary E. Britton Middle School

Area E – ICF at Corridor



Week Ending February 16, 2024

Mary E. Britton Middle School



Area E – ICF Topping out at Storm Shelter



Week Ending February 16, 2024

Mary E. Britton Middle School



Area F – Mechanical Duct in Gym



Week Ending February 16, 2024

Mary E. Britton Middle School

Area F – Sheathing at Mechanical Platform



Week Ending February 16, 2024