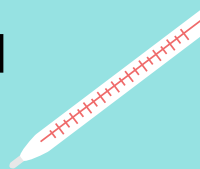
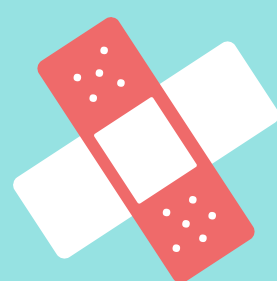
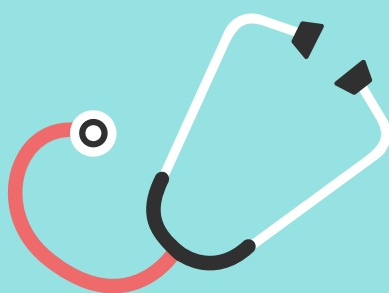


SCHOOL-BASED HEALTH CENTER FAQ'S



Here are some answers to the most frequently asked questions about the new School-Based Health Center (SBHC) at Brighton High School:

1 WHAT IS A SBHC?

A SBHC is a medical clinic for students located on school grounds. It's like bringing a doctor's office to school!

2 WHAT ARE THE BENEFITS OF A SBHC?

- Students can receive high-quality medical services at school, so parents don't have to take time off from work for doctor's appointments.
- Students miss less classroom instruction, which helps them succeed in school.
- No health insurance or transportation is needed to receive health care.
- Students feel more comfortable accessing health care, due to a friendly environment and bilingual staff specialized in teen health care.

3 WHAT SERVICES DOES THE SBHC PROVIDE?

- Sports Physicals
- Sick Visits
- Immunizations
- Health Education
- Mental Health
- Teen Confidential Visits
- Dental Care
- Plus Much More...

4 WHO CAN RECEIVE CARE AT THE SBHC?

All BHS students who enroll in the SBHC can receive care at the clinic, starting in fall 2018.

5 HOW IS THE SBHC FUNDED?

Unexpected earnings from the 27J Bond will pay for the cost of construction. The bond funds can only be used for capital expenses like construction and renovation. Kids First Health Care, the medical sponsor, will cover the cost of operations by billing insurance, applying for grants, and fundraising.

6 WHAT ORGANIZATIONS ARE INVOLVED?

- Project Partners: School District 27J, Kids First Health Care, Salud Family Health Centers & Community Reach Center
- Funders: CO Dept of Public Health & Environment, Platte Valley Medical Center, The Colorado Health Foundation, Rose Community Foundation, CoBiz Financial & Schlessman Family Foundation