



Boone County  
Schools



**JANUARY 2024**

**QUARTERLY**

**REPORT**

---

# BOONE COUNTY SCHOOLS



## ABOUT THE DISTRICT

Boone County Schools are committed to ensuring every student is college, career and life ready. As the third largest in the Commonwealth of Kentucky, the District consists of 15 elementary schools, six middle schools and five high schools. There are over 20,000 students, 1,200 who are English Language Learners, speaking over 50 languages in Boone County Schools.

This district takes great pride in their mission of Achieving Excellence Together. With a rich history of high achievements, quality teaching and efficient operations, Boone County Schools are helping to prepare today's students for tomorrow's world.

## VISION

Every graduate ready for college, career, and life!

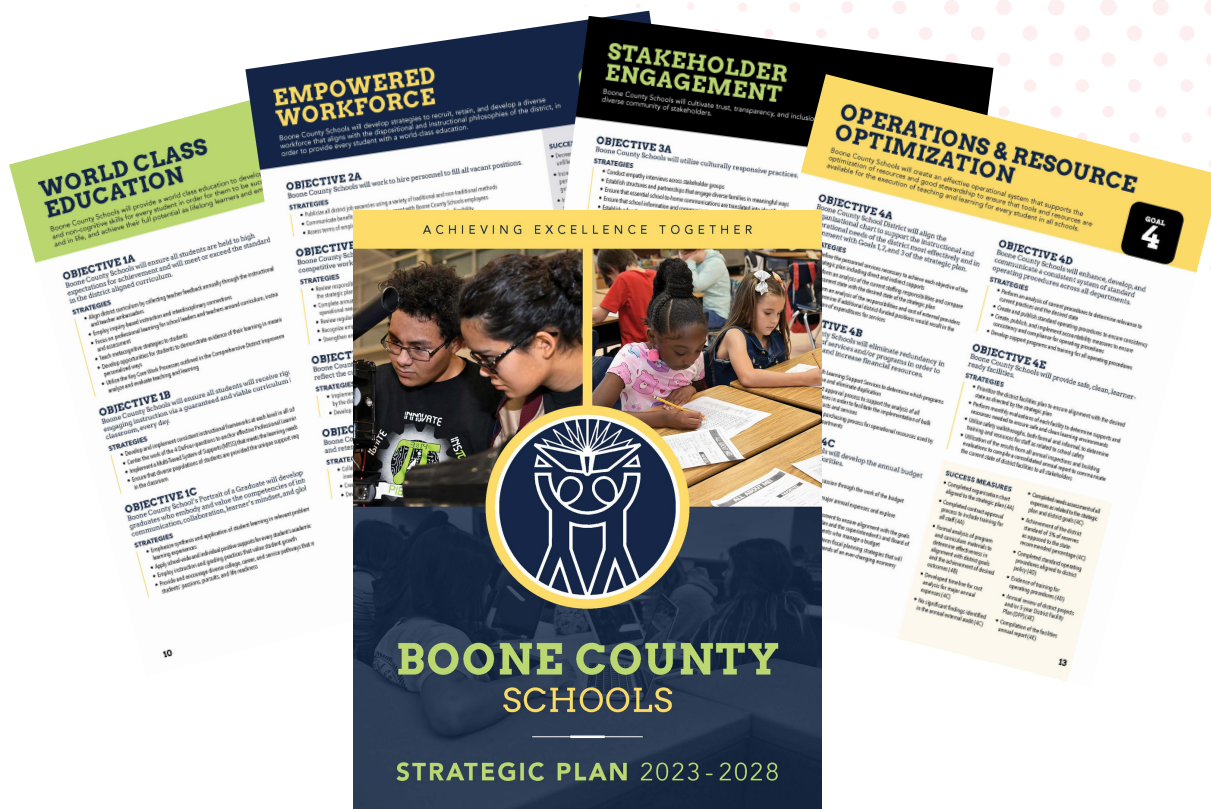
## MISSION

Representing and in partnership with our stakeholders, the Boone County School District recognizes that all children can learn and dedicates itself to providing a challenging educational environment that allows each student to achieve to his or her highest potential as a learner and citizen.



# STRATEGIC PLAN

## 2023 - 2028



This new 5-year strategic plan is the result of extensive collaboration, input, and analysis from stakeholders across our district that include parents, students, teachers and school administrators, school board members, business and community members, faith leaders, and post-secondary education leaders. Their work was complemented by the feedback provided by the Business Leader Roundtable group, my Superintendent's Student Advisory Council, the Boone County Fiscal Court, the Florence and Union City Councils, and the Florence Rotary Club. We believe that our strategic planning work is stronger thanks to the many voices that were included as the plan was developed.

The strategic plan embodies our shared vision for the future and outlines clear goals, strategies, and action steps to achieve excellence in education. By focusing on these key areas, we aim to create an environment that fosters academic success, personal growth, and community engagement.

[Click Here To View Our Strategic Plan](#)



# MEET OUR SUPERINTENDENT AND SCHOOL BOARD



**CAROLYN  
WOLFE**

Division 1



**MATTHEW  
TURNER**

Superintendent



**DR. MARIA  
BROWN**

Division 2



**JESSE  
PARKS**

Division 3



**CINDY  
YOUNG**

Division 4



**KAREN  
BYRD**

Division 5

BOARD DIVISIONS MAP





# MEET OUR DISTRICT ADMINISTRATORS



**ERIC MCARTOR**

Deputy  
Superintendent



**Dr. Jim Detwiler**

Deputy  
Superintendent



**KIM BEST**

Assistant  
Superintendent



**DR. JENNY  
WATSON**

Assistant  
Superintendent



**TARA DRYSDALE**

Assistant  
Superintendent



**KATHY  
REUTMAN**

Executive  
Director





# THE BREAK THE MOLD AWARD

The Boone County School District prides itself on breaking the mold in education. We believe in doing things differently to achieve better results. We reward our staff for being willing to try something new and innovative, for being unique or remarkable in their commitment and pursuit to help our students make achievements. That award is called Break The Mold. If you know of a teacher or support staff employee working in the district that you believe has broken the mold with their commitment to students, the district and their community, please [click this link](#) to nominate them.



November's Break The Mold award winner is Sandra Linden, Financial Secretary and School Clerk at Thornwilde Elementary School.

**[CLICK HERE TO VIEW THE VIDEO](#)**



December's Break The Mold award winner is Judy Stauffer, a special education para-professional at New Haven Elementary School.

**[CLICK HERE TO VIEW THE VIDEO](#)**



January's Break The Mold winner is Kristin Morvik, Business Teacher at Boone County High School!

**[CLICK HERE TO VIEW THE VIDEO](#)**





# LEARNING SUPPORT SERVICES

## ENGLISH LANGUAGE LEARNERS

- Current Active EL: 1963
- Top 5 languages (in this order): Spanish, French, Somali, Arabic, Japanese
- Growth:
  - May 2018: 1205 Active LEP
  - May 2019: 1267 Active LEP
  - May 2020: 1375 Active LEP
  - May 2021: 1453 Active LEP
  - May 2022: 1590 Active LEP
  - May 2023: 1762 Active LEP
  - Current (February 2024): 1963 Active LEP
  - Growth of 201 active EL Students just since May. This DOES include any students we have lost going to other districts. Our numbers have still increased by 201.





# ASSESSMENT TESTING SCORES

## Boone County Schools Universal Screeners

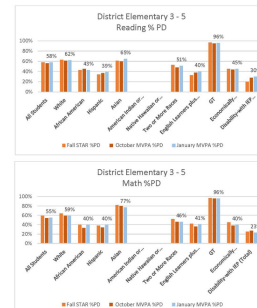
General achievement measure to monitor progress toward end-of-year goals and identify students or curricular areas needing additional attention, content covers full year's standards.

DISTRICT ELEMENTARY - 3RD - 5TH GRADES  
YELLOW HIGHLIGHTS - BELOW STATE AVERAGE

Reading	# Enrolled	# Tested	2023 STATE AVG % PD	2023 STAAR % PD	District Benchmark October MVFA % PD	District Benchmark January MVFA % PD	District Benchmark March MVFA % PD	District Benchmark April MVFA % PD	2024 Reading Goal
All Students	4525	4201	47.3	40	50%	50%	50%	50%	64.3
White	3256	3088	51.7	45	53%	51%	52%	52%	67.4
African American	342	306	26.3	17	40%	40%	40%	40%	40.2
Hispanic	511	429	35.3	29	34%	37%	38%	38%	47.6
Asian	136	124	41.7	18	41%	40%	40%	40%	78.1
American Indian or Alaska Native	*	*	*	*	*	*	*	*	---
Native Hawaiian or Other Pacific Islander	*	*	*	*	*	*	*	*	---
Two or More Races	249	236	43.7	56	53%	48%	51%	51%	58.7
English Learners plus Monitored	450	440	39	100	77%	77%	76%	76%	41.5
CT	1861	1704	35.3	34	40%	44%	45%	45%	49.3
Free/Reduced Price Meals	466	399	38	35	40%	40%	40%	40%	33.8
Disability with IEP/504	*	*	*	*	*	*	*	*	---

Math	# Enrolled	# Tested	2023 STATE AVG % PD	2023 STAAR % PD	District Benchmark October MVFA % PD	District Benchmark January MVFA % PD	District Benchmark March MVFA % PD	District Benchmark April MVFA % PD	2024 Math Goal
All Students	4525	4215	42	39	50%	54%	55%	55%	61.1
White	3256	3079	46.3	43	48%	53%	55%	55%	63.6
African American	342	307	30	42	40%	37%	40%	40%	44.5
Hispanic	511	452	36.7	29	30%	30%	30%	30%	49.1
Asian	136	124	44.3	56	53%	50%	57%	57%	87.3
American Indian or Alaska Native	*	*	*	*	*	*	*	*	---
Native Hawaiian or Other Pacific Islander	*	*	*	*	*	*	*	*	---
Two or More Races	249	237	37	52	52%	46%	48%	48%	52.4
English Learners plus Monitored	450	441	29.7	41	40%	36%	41%	41%	46.5
CT	1861	1704	35.3	34	40%	44%	45%	45%	49.3
Free/Reduced Price Meals	466	399	38	35	40%	40%	40%	40%	33.8
Disability with IEP/504	*	*	*	*	*	*	*	*	---

DISTRICT ELEMENTARY - 3RD - 5TH GRADES  
YELLOW HIGHLIGHTS - BELOW STATE AVERAGE

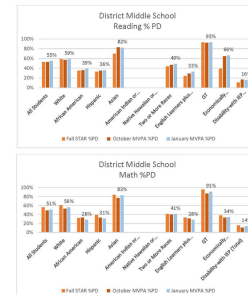


DISTRICT MIDDLE  
YELLOW HIGHLIGHTS - BELOW STATE AVERAGE

Reading	# Enrolled	# Tested	2023 STATE AVG % PD	2023 STAAR % PD	District Benchmark October MVFA % PD	District Benchmark January MVFA % PD	District Benchmark March MVFA % PD	District Benchmark April MVFA % PD	2024 Reading Goal
All Students	4510	4143	45.7	33	50%	50%	50%	50%	65.5
White	3264	3043	60.3	37	50%	57%	59%	59%	73.3
African American	345	297	24.3	15	30%	30%	30%	30%	42.2
Hispanic	519	461	33.7	25	33%	33%	36%	36%	53.9
Asian	120	107	64.7	73	70%	83%	82%	82%	78
American Indian or Alaska Native	*	*	*	*	*	*	*	*	---
Native Hawaiian or Other Pacific Islander	*	*	*	*	*	*	*	*	---
Two or More Races	236	216	42	43	44%	47%	49%	49%	58.7
English Learners plus Monitored	515	475	18	17	24%	29%	33%	33%	25.9
CT	430	433	36.7	30	30%	32%	34%	34%	44.5
Free/Reduced Price Meals	2010	2030	36.3	30	30%	33%	36%	36%	54.5
Disability with IEP/504	563	321	19	17	11%	17%	16%	16%	30

Math	# Enrolled	# Tested	2023 STATE AVG % PD	2023 STAAR % PD	District Benchmark October MVFA % PD	District Benchmark January MVFA % PD	District Benchmark March MVFA % PD	District Benchmark April MVFA % PD	2024 Math Goal
All Students	4510	4045	37	31	50%	49%	51%	51%	63.6
White	3264	3012	41.3	30	53%	53%	56%	56%	67.4
African American	345	279	18	20	32%	32%	33%	33%	33.8
Hispanic	519	418	26.7	24	39%	33%	31%	31%	42.1
Asian	120	105	62	60	84%	73%	83%	83%	80.7
American Indian or Alaska Native	*	*	*	*	*	*	*	*	---
Native Hawaiian or Other Pacific Islander	*	*	*	*	*	*	*	*	---
Two or More Races	236	209	32	30	41%	40%	41%	41%	43.7
English Learners plus Monitored	515	475	18	20	33%	31%	38%	38%	26.9
CT	430	411	33.7	30	30%	31%	34%	34%	41.5
Free/Reduced Price Meals	2010	2030	36.3	30	30%	33%	36%	36%	41.6
Disability with IEP/504	563	326	14.7	12	16%	15%	14%	14%	22

DISTRICT MIDDLE  
YELLOW HIGHLIGHTS - BELOW STATE AVERAGE

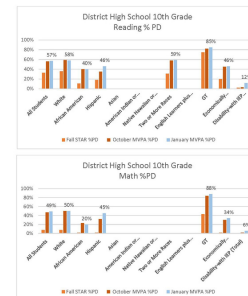


DISTRICT HIGH SCHOOL GRADES  
YELLOW HIGHLIGHTS - BELOW STATE AVERAGE

Reading	# Enrolled	# Tested	2022 STATE AVG % PD	2022 STAAR % PD	District Benchmark HS Fall CBRT % PD	District Benchmark HS October MVFA % PD	District Benchmark HS January MVFA % PD	District Benchmark HS March MVFA % PD	District Benchmark HS April CBRT % PD	2023 KSA	2023 Reading Goal
All Students	1635	846	46	52	50%	50%	50%	50%	50%	62.7	62.7
White	1214	684	50	57	50%	59%	58%	58%	58%	64.9	64.9
African American	109	40	28	23	11%	40%	40%	40%	40%	40.2	40.2
Hispanic	195	61	35	38	10%	33%	46%	46%	46%	67.6	67.6
Asian	*	*	*	*	*	*	*	*	*	---	---
American Indian or Alaska Native	*	*	*	*	*	*	*	*	*	---	---
Native Hawaiian or Other Pacific Islander	*	*	*	*	*	*	*	*	*	---	---
Two or More Races	64	32	42	47	21%	58%	59%	59%	59%	66.8	66.8
English Learners plus Monitored	187	123	94	88	70%	82%	85%	85%	85%	17.7	17.7
CT	677	247	36	38	20%	45%	46%	46%	46%	45.1	45.1
Free/Reduced Price Meals	159	34	14	14	7%	8%	12%	12%	12%	29.4	29.4
Disability with IEP/504	180	34	14	14	7%	8%	12%	12%	12%	29.4	29.4

Math	# Enrolled	# Tested	2022 STATE AVG % PD	2022 STAAR % PD	District Benchmark HS Fall CBRT % PD	District Benchmark HS October MVFA % PD	District Benchmark HS January MVFA % PD	District Benchmark HS March MVFA % PD	District Benchmark HS April CBRT % PD	2023 KSA	2023 Math Goal
All Students	1635	787	34	45	41%	47%	49%	49%	49%	58.8	58.8
White	1214	633	38	50	41%	50%	50%	50%	50%	61.9	61.9
African American	109	40	15	19	2%	23%	20%	20%	20%	21.7	21.7
Hispanic	195	62	34	28	7%	33%	43%	43%	43%	67.1	67.1
Asian	*	*	*	*	*	*	*	*	*	---	---
American Indian or Alaska Native	*	*	*	*	*	*	*	*	*	---	---
Native Hawaiian or Other Pacific Islander	*	*	*	*	*	*	*	*	*	---	---
Two or More Races	*	*	*	*	*	*	*	*	*	---	---
English Learners plus Monitored	187	82	91	86	43%	84%	88%	88%	88%	13.1	13.1
CT	677	271	24	26	7%	30%	34%	34%	34%	41.4	41.4
Free/Reduced Price Meals	159	34	11	10	0%	7%	8%	8%	8%	24.4	24.4
Disability with IEP/504	180	34	11	10	0%	7%	8%	8%	8%	24.4	24.4

DISTRICT HIGH SCHOOL GRADES  
YELLOW HIGHLIGHTS - BELOW STATE AVERAGE





# FINANCE DEPARTMENT



The Finance Department has welcomed two new employees recently. Stacy Bolte and Brynn Mueller joined the department this past fall as our Payroll Administrator and Certified Payroll Bookkeeper respectively.

January is tax time!!! Our Finance team has been busy with processing W2s and 1099 forms. This is a monumental task and requires all hands on deck! Luckily, our department thrives under pressure, and everyone steps up to pitch in!

The Accounting team sent out about 225 1099s. While that does not sound like a huge number, a lot of work goes into running reports to determine who needs one and contacting the vendors to compile all their information.

Our payroll employees sent out almost 4,000 W2 forms!!! The work that goes on behind the scenes to produce each W2 is very involved and detailed. Many accumulators and reports must be run to start compiling data. That information is then compared and confirmed to ensure accurate information is reported.





# STUDENT SERVICES



In the spring a delegate assembly nomination convention is held. Elementary, Middle and High Schools each have two members represented at the delegate assembly. Each high school nominates one candidate for Student School Board Representative (to serve for the next school year). The five candidates will create campaign videos to be broadcast in all schools. The superintendent holds a discussion session and the Director of Pupil Personnel talks to the students about leadership qualities and how important their role is in the voting process. The following month the SSAC meets again, and the five candidates will give their final campaign speeches to the student delegates and the delegates will cast their ballots with the results certified by an official from the Boone County Board of Elections.





# FOOD SERVICES

Boone County Schools Food Service Department has served 1,667,250 meals since the beginning of the school year through the end of January! The average daily participation rate by students is 28% for breakfast and 64% for lunch which is a 7% average increase from last quarter! Eleven of our twenty six cafeteria sites participate in the Community Eligibility Program (CEP) which allows students to receive meals at no charge. Students who do not attend a CEP school can apply to receive free meals by visiting [www.myschoolapps.com](http://www.myschoolapps.com) to complete an application.

Our Food Service Department is now partnering with local growers and have been able to provide locally grown produce to include apples, tomatoes, melons and cucumbers.





# FACILITIES & MAINTENANCE

## Conner High School Athletic Field House

Plans for the Conner Field House are being finalized with work expected to begin this summer. The field house will include locker rooms, a weight room and offices for athletic staff.



Preliminary Architect Draft Rendering

## Yealey Elementary Renovation

The renovation of Yealey Elementary will begin this summer and will continue through 2025. The majority of the building will be renovated to include lighting, HVAC systems and plumbing. A dedicated bus loop is also included in this project and will be a welcomed addition to the Yealey campus!

## Longbranch Elementary

Longbranch Elementary will be expanding their instructional space with the addition of two mobile classrooms. Work is currently underway and instructional spaces will be ready for use after spring break.



# FACILITIES & MAINTENANCE



## Cooper High School Greenhouse

Boone County Schools are the recipients of funding through LAVEC (Local Area Vocational Education Center) Grants which has allowed for several projects to occur at our high schools. One of these projects is the construction of a greenhouse at Cooper High School. The 1,800 square foot greenhouse will allow expanded learning opportunities for students in various agriculture programs.



## Ignite Institute

Ignite Institute is growing! Through additional funding from a LAVEC grant, eight new classrooms will be added to an unfinished area of the building. Four traditional classrooms and four enhanced science classrooms will be added to allow for the expansion of current programs. This work is expected to begin in the summer of 2024.

## Camp Ernst Middle School

Camp Ernst Middle School will soon see increased activity with the coming addition of new instructional spaces. Each of the three grade level wings will be receiving three general instruction classrooms, one science classroom, one resource classroom and restrooms. Work on this project is expected to begin in the summer of 2024 with completion expected in 2025.

# TRANSPORTATION

The transportation department welcomes six new buses to its current fleet of 275. These new buses will replace current buses that have met their life expectancy or are no longer cost efficient to maintain or repair. Buses which are removed from service are either utilized for spare parts or are placed on the surplus list.





# HUMAN RESOURCES

## MISSION

The Human Resources Team is dedicated to supporting the District's mission by recruiting and retaining diverse, highly-qualified employees and providing all employees with human resource services ensuring a thriving, positive, and consistent work environment.



### We Are Hiring!!

- Certified and Classified Substitutes
- Para-Educators
- Custodians
- Bus Drivers
- Food Service Workers



[Apply Today!](#)

### Benefits to Working for Boone County Schools

- On the job training
- Insurance available if working 4+ hours per day
- Leave each day knowing you have made a positive impact in the lives of our students
- Some positions such as para-educators, you will work a schedule similar to students schedules



# UPCOMING EVENTS

**4th Annual**  
LINKING TOGETHER  
YOUTH MENTAL HEALTH  
SUMMIT

**REGISTER NOW!**

**Keynote Speakers**

- Jason Booher
- Charle Peck
- Mathew Portell

**Where & When**  
Florence Baptist Church  
642 Mt. Zion Road Florence, KY  
Friday, February 23rd - 6:00 pm - 9:30 pm  
Saturday, February 24th - 8:00 am - 1:30 pm

**Sessions**  
Real-Time Resilience | School-Based Suicide Prevention | Screen-Time Connection to Child Development | Addressing Behavior Disparities in LGBTQ+ Youth | Co-Regulation Strategies for Classroom | DBT Skills for Success | Power of Self-Care with Neuroscience | Understanding Trauma in the School | Mind & Matter | Mental Health and Brain Injury | Empowerment Self-Defense | Healthy Coping Strategies | Youth Vaping Prevention | Mind Matters and the Wellness Wheel | Stakeholders to Promote Mental Health | Erin's Law | DCBS & the Prevention Continuum | Understanding & Addressing Teacher Stress | Holistic Wellness | Preventative Strategies for Behavioral Escalation

**Registration Link:**  
[bit.ly/bcsmentalhealthsummit](http://bit.ly/bcsmentalhealthsummit)

Hosted By:  
Boone County Schools



**Have you ever thought about becoming a teacher?**

**BOONE COUNTY SCHOOLS**  
ACHIEVING EXCELLENCE TOGETHER

Come join us for an open house where we will present information on alternative routes to certification and you can meet with colleges and universities to learn more about their teacher certification programs.


**Date:** Thursday, March 21st  
**Time:** 5-7pm  
**Location:** Ralph Rush Development Center  
99 Center St. Florence, KY 41042

Use the QR Code to RSVP  
or contact Meagan Meints  
at 859-282-2147 or  
[meagan.meints@boone.kyschools.us](mailto:meagan.meints@boone.kyschools.us)






**Boone County School District**  
**Kindergarten Registration**  
**Begins**  
**Monday, March 4, 2024**  
**4:30 - 6:30 pm**



**Once Online Registration Forms Are Completed**  
**Please Bring The Items Below To Your School:**  
Certified Birth Certificate, Proof of Residence\*,  
Current KY Immunization Certificate, Current Physical\*\*,  
KY Dental Screening, KY Eye Exam, Social Security Card  
\*Phone bill, utility bill, lease agreement, etc - may vary depending upon school  
\*\*Must be dated within 1 year of start date of school

**Registration Forms Will Be Completed Online**  
The registration link can be found on the district website under "For Parents"






# BOONE COUNTY SCHOOLS

---

The 21st century skills of critical thinking and communication are intentionally planned for and taught in Boone County. Additionally, teachers provide opportunities for all students to be challenged within their zone of proximal development. Our schools create project/problem/ passion based learning experiences for students to apply core knowledge, concepts and 21st century skills, within and across disciplines, to solve real-world problems. PBL experiences intentionally focus on building creativity and collaboration skills, as well as providing choice.



## CONTACT US

---



859.283.1003



[boone.kyschools.us](http://boone.kyschools.us)



8330 US Highway 42  
Florence, KY 41042