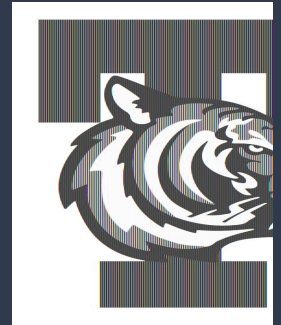


Tewksbury Township School District

Strategic Planning 2024-2029



Welcome!



AGENDA- February 12, 2024

- 7:00-7:05** **Welcome and Introductions**
Opening Public Meeting
Ms. Andrea Stein, Board of Education President
- 7:05-7:15** **State of the Community Report**
Ms. Jean Frankel, Tewksbury Township Committee
Ms. Andrea Maranca, Tewksbury Township Committee
- 7:15-7:45** **State of the School District Report**
Dr. Jennifer Shouffler, Superintendent
- 7:45-8:15** **Small Group Activity & Brainstorming**
*Strengths/Accomplishments and Challenges/Opportunities
of Tewksbury Township School District*
Facilitated by Ms. Gwen H. Thornton, NJSBA Representative
- 8:15-8:30** **Sharing our Thoughts**
- 8:30** **Wrapping Up and Next Meetings**

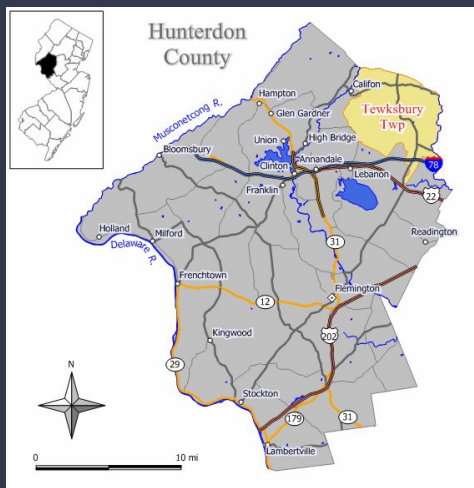
State of the Tewksbury Community

Ms Jean Frankel, Councilwoman

Ms. Andrea Maranca, Councilwoman



Tewksbury Township New Jersey



Located in northeastern Hunterdon County New Jersey, the Township of Tewksbury is a community of approximately 6,000 people. The Township covers 31.8 square miles and is home to the villages and hamlets of Oldwick, Fairmount, Pottersville, Cokesbury, Mountainville, and Bissell. The Township is crossed by Interstate 78, Routes 517, 523 and 512.

Tewksbury 2020 Census Data

Population	5,870	100%
19 years and younger	1,261	21.5%
20-24 years	332	5.7%
25-44 years	832	14.2%
45-64 years	2,087	35.6%
65 years and older	1,358	23.1%
Median Age	51.9 years	
Households	2,185	
Households with individuals under 18	597	27.3%

Tewksbury American Community Survey Data

Year	2020	2022
Families	1,838	1,894
Average Household Size	2.63	2.56
Average Family Size	2.90	2.84
Median Household Income	\$138,378	\$176,932
Median Family Income	\$156,750	\$200,792
Median Per Capita Income	\$71,968	\$92,897
Median Income (Males)	\$127,031	\$143,828
Median Income (Females)	\$95,326	\$114,088

Tewksbury Township – Tax Rate 2016–2023

	2016	2017	2018	2019	2020	2021	2022	2023
County Tax	0.369	0.375	0.38	0.386	0.325	0.318	0.329	0.357
County Library	0.038	0.038	0.038	0.038	0.032	0.032	0.033	0.035
County Open Space	0.037	0.036	0.037	0.037	0.031	0.031	0.032	0.034
District School Tax	0.931	0.965	0.978	0.979	0.842	0.861	0.875	0.891
Regional School Tax	0.635	0.662	0.651	0.669	0.561	0.592	0.557	0.593
Municipal Tax	0.375	0.391	0.412	0.426	0.377	0.388	0.397	0.402
Municipal Open Space	0.05	0.05	0.05	0.05	0.05	0.05	0.05	0.05
Total Tax Rate:	2.435	2.517	2.546	2.585	2.218	2.272	2.273	2.362

State of the Tewksbury Schools

Dr. Jennifer Shouffler,
Superintendent



What do you value most about your school?

- **Will:** "Teachers are always open to helping you and students willing to help too."
- **Juliette:** "There is a variety of clubs and sports. Caring and nice environment, and everyone knows each other."
- **Emily:** "Opportunity for leadership roles and friendships. Teachers are very adaptable; they change the way they teach for the needs of the students."
- **Lily:** "Strong sense of community. Teachers know you. I came from a larger district and I like this smaller school."
- **Jake:** "Kids are able to connect through sports and clubs. Different grades can get to know each other through activities"
- **Katie:** "Good learning environment. Safe and comforting."
- **Deanna:** "Easy to speak to principal and teachers about ideas."



Tewksbury Township Public Schools

Mission Statement



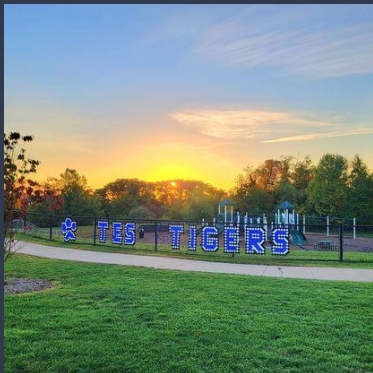
The Mission of the Tewksbury School District is the continual development of each child's intellectual, artistic, social, and physical abilities in a positive environment, which fosters self-esteem and a love of learning while meeting the district expectation that they will achieve the New Jersey Student Learning Standards at all grade levels. Pupils in the Tewksbury Township Public Schools will be confident, productive members of a changing society.

Awards and Highlights from our Schools

- Both of our schools have received the U.S. Department of Education National Blue Ribbon Award for Educational Excellence: Tewksbury Elementary School (2011) and Old Turnpike School (2020)
- 486 students and Low Class Size in both our schools
- Successful Negotiations between the BOE and Tewksbury Education Association which led to a supportive 5-year teachers' contract
- Students consistently show high achievement levels in comparison to the state of New Jersey and other Hunterdon Schools
- Sister Schools with Tewkesbury, Gloucestershire England
- Supportive Board of Education, Caring Parents, Talented Students, and Dedicated Teachers and Staff making enviable schools to attend



Tewksbury School District



- **Two Schools with 486 Students**
- **Kindergarten through Grade 8, with a Pre-Kindergarten for students with IEPs**
- **Number of Total Staff: 111**
- **Includes 62 Teachers/Certified Staff**
- **New Teachers/Certified Staff this year: 5**
- **Percent of Non-tenured Staff: $16/62 = 26\%$**
- **Administrators:** Superintendent, two Principals, Supervisor of Special Education, and Supervisor of Instruction/Programs
- **Administrative Assistant for** Superintendent and Human Resources
- **Business Office:** Business Administrator, Payroll Assistant, and Accounts Payable Clerk
- **Transportation, Facilities, and Technology Departments**

Enrollment: PreK through Grade 8

	2018-2019	2019-2020	2020-2021	2021-2022	2022-2023	2023-2024
Pre-K	14	11	6	3	15	11
Grade K	39	42	43	53	36	42
Grade 1	53	43	49	49	58	41
Grade 2	41	56	44	51	50	61
Grade 3	55	46	56	50	54	49
Grade 4	62	56	48	58	57	56
Grade 5	66	59	59	52	56	57
Grade 6	62	70	65	53	55	57
Grade 7	80	60	66	65	59	56
Grade 8	65	80	59	66	70	56
Total	537	523	495	500	510	486

Public versus Non-public School Attendance in Tewksbury

Year	# of students in Grade 8 in June	# of students attending Non-public School in Grade 9	% attending Non-public High School
2022-2023	70	13	19%
2021-2022	65	9	14%
2020-2021	58	7	12%
2019-2020	79	12	15%
2018-2019	62	11	18%
2017-2018	75	10	13%

Year	Aid in Lieu #	% of K-8 Tewksbury Students receiving Transportation Funds to Non-Public School
2022-2023	47	9%
2021-2022	59	12%
2020-2021	41	8%
2019-2020	64	12%
2018-2019	62	11.5%
2017-2018	88	15.5%

Demographics of Our Student Population in Tewksbury Schools

- Considered a Rural School by Federal Requirements
- “J” District in terms of Socio-economic Status: the highest tier in NJ
- Students eligible for Free/Reduced Lunch Price: 2.67 %
- Multilingual Learners: 1%
- Student Population by Ethnicity
 - White: 78%
 - Hispanic/Latinx: 4%
 - Black/African American: 1%
 - Asian: 5%
 - Pacific Islander: 1%
 - Multiracial: 12%

Tewksbury Elementary School: PreK through Grade 4



- School Built in 2005
- Principal Moore
- Currently 259 students
- 2 School Secretaries, 1 Nurse, 1 School Counselor
- 1 Reading Specialist and 1 Enrichment Teacher/Basic Skills
- 14 classroom teachers (plus special educators)
- 1 Librarian and 1 Library Clerk (Shared w/ OTS), 1 Art teacher, 1 Music Teacher, 1 Spanish Teacher, 1 Technology Teacher, and 1.5 PE/Health Teachers
- **Average Class Size:** General Education 17-18 Students
- **Teacher to Student Ratio:** 1 to 9
- *Math in Focus K-5 (originally implemented 2012)*
- *InquirEd K-5 (2022):* Social Studies Resources focus on Primary Sources
- *FOSS Kits:* Hand-on Science program
- *Literacy Support: Wilson Reading, Fountas and Pinnell, Orton Gillingham, and Writers Workshop:*
- **Yearly Events:** Sneak Peak for Kindergarten, Grade 4 Moving Up Ceremony, Talent Show, Winter/Spring Concerts, Halloween Parade, Family Math, Family Puzzle Night, Field Day, Service Learning Projects for Grade 4, Field Trips for every grade

Old Turnpike School

Grade 5 through Grade 8



- Built in 1969
- Principal Mitchell
- Currently 224 students
- 2 School Secretaries, 1 Nurse, 1 School Counselor
- 4 Math Teachers, 4 ELA Teachers, 4 Science Teachers, 2 Social Studies Teachers (plus special educators)
- 1 Librarian and 1 Library Clerk (Shared w/ TES), 1 Art teacher, 1 Music Teacher, 1 Spanish Teacher, 1 Technology Teacher, and 1.5 PE/Health Teachers
- **Average Class Size:** General Education- 15 students
- **Teacher to Student Ratio:** 1 to 9
- Premier STEM Program: *Project Lead the Way*
- Instrumental Music: Grades 5-8 Band, Jazz Band, Strings, Chorus
- Hands-on-Science, Problem-based Math, Primary Sources for History, and Focus on Classic Novels
- Fundraisers for DC Trips and Charity Events
- **Yearly Events:** Social Media Night, Winter/Spring Concerts, Grade 8 Musical, Grade 8 Graduation, Grade 8 Trip to DC, Choral Concert for Tewksbury Seniors and Women's Club, Grade 4 >5 Parent Night, Grade 4>5 Student Orientation/Visit, Grade 8 Parent Night for HS Transition, Curriculum and Course Planning Parent Workshop, School Dances, Camp Mason for 7th grade, Field Day, Field Trips for all grades

Multi-Tiered System of Support

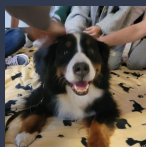
Pedagogy: Teachers trained to use strategies within the classroom based on Neurodevelopmental Research; and Differentiated Instruction;; Supplemental Resources

ASAP Program (Basic Skills)

- **TES Reading Specialist:** Basic Skills and English Language Services for ML
- **TES Math Basic Skills**
- **OTS Math and English Language Arts Basic Skills:** by teacher-experts in content area

504 and Special Education: Support for students with disabilities

- **TES Enrichment:** Project Based for identified Grades 2-4 gifted learners, Push-in for all Grades K -1 within class
- **TES Enrichment for All:** TES recess courses open to Grades 1-4 in Music, Art, Technology, and Literacy
- **OTS Enrichment:** Content-based in Math and ELA for identified gifted students grades 5-8
- **OTS Math Cohorting:** A differentiation strategy used in grades 5-7 for gifted math learners
- **Algebra:** for Grade 8 students ready for this High School course



Special Education



- **Supervisor of Special Education:** Ensures services for students' Individualized Education Plans (IEP)
- **Child Study Team Secretary**
- **School Psychologist:** Case Manager
- **School Social Worker:** Case Manager
- **Contracted Services:** Occupational Therapy, Physical Therapy, Learning Disability Teacher Consultant, Board Certified Behavior Analyst
- **Special Educators:** 6 at TES and 5 at OTS
- **Speech Pathologists:** One full-time, One part-time
- **Paraeducators:** 7 at TES and 3 at OTS
- **Inclusion with Co-teaching, Resource Room, and Multiple Disabilities Classrooms (MD):** for students to learn in least restrictive environment
- **Classified Students in our schools:** 50 (10%)
- Shared CST services for Califon School
- **Pre-Kindergarten Program:** students with IEPs, plus open seats for traditional students
- **Summer Extended School Year Program**
- *Active Special Education Parent Advisory Committee*
- Community Based Instruction OTS MD program
- Encourage inclusion in *all* sports, school activities, and clubs for *all* students using adaptive strategies

Character Education

- OTS Advisory Program: Model Program
- Peer Leaders at OTS
- TES House Model: Cross-grade levels Tiger Dens and Cubs Team Building
- TES Student Advisory with Principal
- TES Open Circle: Once a week lesson on character with Classroom Teacher
- Anti-Bullying Workshops for Students and Staff
- Assemblies on Character Education and Anti-bullying
- Week of Respect, Red Ribbon Week, Breakfast for First Responders
- Therapy Dog
- Sensory Tools to support students with Special Needs
- Counselors going into classroom for lessons on social learning and meet with lunch bunch groups for support
- TES became a certified "School of Kindness" 2023



Student Achievement

- Tewksbury students consistently show high achievement levels on the New Jersey Student Learning Assessment (NJSLA) in comparison to the state average and meet growth targets
- Top performance in the Grade 3-8 NJSLA in English, Math, and Science in comparison to other Hunterdon County schools
- On the Grade 9 NJSLA at Voorhees/North Hunterdon, former Tewksbury students scored the highest in math and far exceeded their peers in English Language Arts
- This year we are encouraging an increase in student participation rate on NJLSA and a focus on math achievement among middle school students

Spring 2023 NJSLA Results

English Language Arts	District % >= Level 4	NJ % >= Level 4
Grade 3	70.4%	41.9%
Grade 4	70.2%	51.3%
Grade 5	87.5%	53.3%
Grade 6	62.7%	49.0%
Grade 7	78.9%	55.7%
Grade 8	85.9%	51.3%

Mathematics	District % >= Level 4	NJ % >= Level 4
Grade 3	74.1%	45.9%
Grade 4	75.4%	44.4%
Grade 5	66.7%	40.0%
Grade 6	41.2%	34.3%
Grade 7	67.3%	33.8%
Grade 8: Math 8	31.8%	17.8%
Grade 8: Algebra 1	84.4%	35.0%



Extra Curriculars

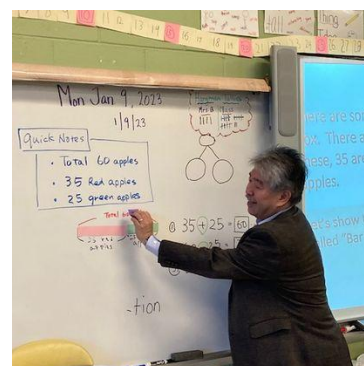


- **Sports Grades 5-8:** Girls Soccer, Boys Soccer, Boys Baseball Grades 6-8, Girls Softball, Girls Basketball, Boys Basketball, Girls Volleyball Grades 7-8(New), Boys Lacrosse, Girls Lacrosse, Cross Country, Track & Field, Cheer Squad
- **Led by our Athletic Director**
- **OTS Clubs:** Video Gaming, Board Games, Arts and Crafts, Newspaper, Jewelry Making, Art, Fishing(New), Battle of the Books, Math League, Grade 4 Safety Patrol, and more
- **TES Clubs:** Crazy 8 Math Club, Yearbook Club, Pack Walks, Photography, Arts & Crafts, Movement Class, Cooking, Tennis, Irish Step Dancing, Chess/Legos, STEM Club, and more
- **OTS Grade 8 Peer leadership**
- **OTS Grade 8 Student Council**
- **Ski Club Grades 5-8**
- **Odyssey of the Mind Grades K-8**
- **Grade 8 Musical**



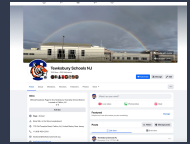
Professional Learning

- **"Effective Professional Learning is the Vehicle to Improve Teaching and Learning"**
- **5 Full days, 2 Half-days, and After-School Meetings on Tuesdays**
- **Professional Learning Communities (PLC):** Teacher-led, Implemented in 2019, Monthly team meetings
- **Lesson Study:** Highly effective form of PLC, Internationally recognized, Two teams will present research lessons this year
- **Consultants:** Workshops, Coaching, and Demonstrations Lessons from Local, National, and International Educational Experts and University Professors
- **Out of District Workshops:** MUJC, Universities/Colleges, NJDOE, and Professional Organizations
- **Articulation Meetings:** Team Time, Within Grade and Across the Grades, with the High School, and other Hunterdon schools
- **Visit to other schools:** To observe best practices
- **Math for All Grant:** 2 Years from NSF, Teaching Strategies Based on Neurodevelopmental Research
- **On-going Support for All Staff:** Workshops on Inclusion, Differentiated Instruction Strategies, and Co-teaching

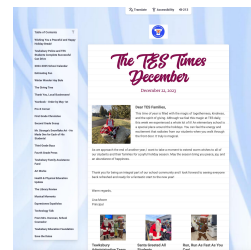




School Communication Tools



- **New Website:** New template, shows off our school colors and new Tiger logo, calendar/school events/contact information
www.tewksburyschools.org
- **Superintendent Letters:** Once a month to offer important information about our schools, stored in folder on website
- **School Newsletters-** 1-2 monthly newsletters with detailed information from our TES Times and OTS Updates (new appealing format), stored on school websites
- **Virtual Note Cards:** Twice a month from schools as reminders of important upcoming dates
- **Emails, Phone Messages, and Text Alerts:** Information for families via our *Realtime Alert System*
- **Virtual Backpack:** Community Information on our Website
- **Facebook:** Follow us at '[Tewksbury Schools NJ](https://www.facebook.com/TewksburySchoolsNJ)' for multiple posts per week on school happenings (291 Followers)
- **New OTS Sign:** Advertising BOE meetings and school events
- **Tewksbury Times:** Sharing information via our town newspaper



Technology

- 1 Technology Specialist and 1 Technician
- Shared Services with ESC for Technology Oversight
- District operates a one-to-one model with a Chromebook for all students
- All teaching staff have laptops
- Classroom technology tools: Smartboards, Document Cameras, Go Guardian
- Recently updated door access system
- Migrating to new website design by end of January

Partnerships



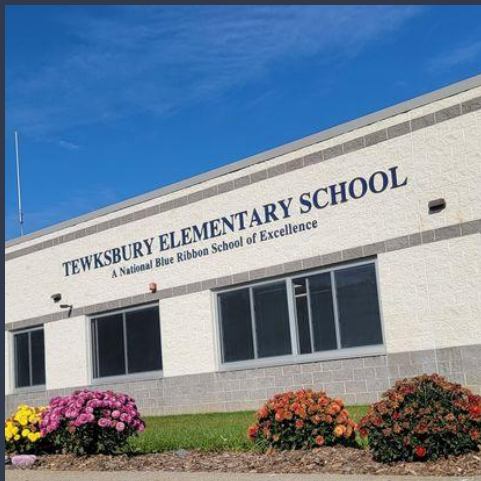
Tewksbury Parent Teacher Association (PTA)- Grants for our schools, After-school Clubs, Trunk or Treat, Parent Nights, Parent-teacher Connections, Support Curriculum Workshops for Parents, Book Fair, Kindergarten Play Date, Grants for teachers, and Teacher Acknowledgement (breakfasts/lunches and updates to our facility rooms), and so much more

Tewksbury Education Foundation (TEF)- is a non-profit fundraising organization raising over \$1.6 million dollars to expand the educational opportunities in our schools. TEF supports our TES STEM Night, Grade level Enrichment grants (Ex/ Grade 8 Broadway Trip and Grade 3 Poet), Grants for teachers, Barn Dance, Fun Run, Grade 8 award, New Families Meet and Greet

Whittemore- Local Tewksbury Nature Preserve offers After-school Clubs (like Photography and Nature Walks with Experts) and wonderful field trips for our students

YMCA- K-8 After-care, Before-care to support students and families for extended school days hours, includes homework help/snacks/socialization

School Finance



- The 2023-2024 school budget is \$17 million dollars
- The revenue sources:
 - 82% from local property taxes
 - 9% from federal and state aid
 - 8% from fund balance and capital reserve
 - 1% from tuition and alternate shared services

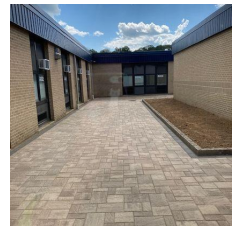
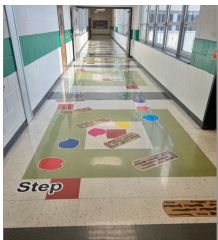
Alternate Revenue Sources

Shared Services and School Choice

- Tewksbury Township School District participates in **Shared Services with Califon School** in order to reduce costs. Our CST team oversees the special education services in Califon and we provide speech services to Califon students.
- Tewksbury participates in the New Jersey **School Choice Program**. We have 26 seats for out-of-district wishing to attend our schools and we consistently have a waitlist.

Facilities

- 1 Building/Grounds Coordinator, 1 Assistant, and 7 Custodians
- Tewksbury Elementary School: 73,289 square feet
- Old Turnpike School: 67,385 square feet
- Buildings are in excellent condition due to ongoing maintenance
- NJDOE Grants include HVAC upgrades at Old Turnpike School in next few years with district being reimbursed by the state for 40% of costs
- Recent Facility improvements:
 - Paving of parking lots at both schools
 - New fascia painting at OTS
 - New display sign at OTS
 - Sensory Hallway at TES
 - Blue Ribbon Lettering at both schools
 - Main Office upgrades at TES and BOE Office (flooring, paint)
 - OTS Courtyard upgrades w PTA/Community Member Donation



School Budget

- Prepared annually by Superintendent and the Board of Education as a whole, with input from administration
- Board adopts the budget for the following year in April
- Constrained by a 2% cap
- Note: Two school bonds expire in June 2026
 - \$10,133,000 Total
 - Covered TES construction, OTS HVAC, and OTS Roof



School Safety



- Several school safety mechanisms are installed in our facilities: including panic buttons, interlock vestibules, safety film on windows, and school cameras inside /outside the buildings and on school buses
- Monthly practice of our safety drills by staff and students
- Newly formed *School Threat Assessment Team* (with our school safety coordinator, psychologist, social worker, teachers, and Tewksbury Police)
- Memorandum of Agreement with the Tewksbury Police (12 officers) - shared trainings, daily visits to both schools, cameras linked to the police with color painted hallway designations, detailed 3d diagrams of our buildings
- Strong Relationships- Tewksbury Police, EMS, and local Fire Departments
- An updated *School Safety Plan* guides our protocols

Transportation



- Tewksbury Schools offers transportation to and from school for **all** our students, plus out-of-district students
- Travel about 575 miles every school day
- Town is 32 square miles with 54 cul de sacs
- Provide transportation for our many Field Trips and Sporting Events.
- The school district owns our buses: 10 full size buses and 3 small buses.
- We employ 8 bus drivers.
- Our transportation coordinator (Mr. Bob Hoffman): Carefully plans all bus routes, facilitates the safe transport of students, advises the superintendent on poor road conditions due to weather, and drives a bus when a substitute is needed.
- Our school transportation is also a community service:
 - Assisted the police department and the township
 - Provide transportation for the Junior Police Academy and for Senior citizen events
 - Transport the Choir and Jazz Band to the Women's Club luncheon and the Seniors Club luncheon to perform.
 - We have delivered food to the local food pantry.

Food Service



- Maschio's is our Food Service Provider
- We do not participate in the National School Lunch program due to our district makeup and this allows us flexibility with lunch choices
- \$6.25 for a student lunch: includes grains/breads, meat/meat alternative, fruit/juice/vegetable and milk/water. (Students choose at least 3 items.)
- PaySchools account allows parents to replenish their student's lunch account online or by check
- Parents can add restrictions to account: like snack choices, and spending limits
- Food Service Committee: with parents, nurse, students, teachers, BOE members, and administration meets throughout the year
- Recent positive feedback from students and parents on improvements to our school lunch program

Goals from Strategic Planning 2014–2019

- 1) Provide all of our students with instructional experiences that foster individual potential, critical thinking, appropriate social-emotional development, and a love of learning
- 2) Provide access to state-of-the-art technology to enhance learning.
- 3) Develop a community that promotes social, emotional and physical well-being for all students.
- 4) Implement systematic and sustained, state of the art professional development
- 5) Sustain and Grow Funding; Advocate for sensible legislation that supports public education

Major Outcomes:

- Full Day Kindergarten
- Districtwide Social-Emotional Learning Program
- Project Based Learning
- Project Lead the Way
- 1 to 1 Technology Devices for Students
- New Food Service Provider
- Increased PE time at TES
- Non-athletic After-school Clubs
- More professional development time for teachers
- Facilities Improvements- Bathrooms and Landscaping
- Exploration of Shared Services

What do you wish for the current and future students to experience in Tewksbury Schools?

Comments from Grade 8 Tewksbury Students:



- Innovative and Flexible Learning Spaces.
- Improvements to OTS Stage and OTS Gym.
- Add Model U.N. and more STEM Clubs.
- More field trips for younger grades.
- More leadership roles for all grade levels.
- More Career Learning Opportunities.
- Teachers can explain why students are learning topics and how it will be useful in the future.
- More ways to build relationships between younger and older students.
- More ways to help the Tewksbury Community.



Dates to Remember



Next Strategic Planning Meetings

7:00pm at Old Turnpike School

- **March 13 (Wednesday)**
- **April 16 (Tuesday)**

Thank you to Board of Education Members:
President Stein, Vice President Munoz, Ms. Carrino,
Dr. Simon, Mrs. Jardinella, Mrs. Fleming, Mrs.
Niang, Mr. Charniga, and Mrs. Wygera

...and Gwen Thornton for facilitating tonight