



September 2

2020

REPORT OF THE HEALTH AND SAFETY COMMITTEE

The Health and Safety Committee (HSC) met on Thursday, August 20, 2020 at 11:30 AM via the Blue Jeans Video Conferencing Tool.

The public viewed the meeting via Video Conference.

ATTENDEES

Health and Safety Committee Members

Chairperson Melanie Bates, Eve Bolton, Ben Lindy

Administration/Staff

Laura Mitchell, Superintendent; Susan Bunte, Assistant Superintendent; Sarah Trimble-Oliver, Chief Strategy Officer

Mental Health Services

Growing Well

Francie Wolgin, Executive Director for Growing Well, updated the Committee on the following information about School Based Health Centers (SBHC).

She reported that Growing Well is a member of the [National School Based Health Alliance](#). NSBHA is a collaboration of many School Based Health Centers across the country.

She reported the following data about the centers in the Greater Cincinnati area.

- 38 School-Based Health Centers
- 11 School Districts
- 10 Health Care Providers
- 7 counties

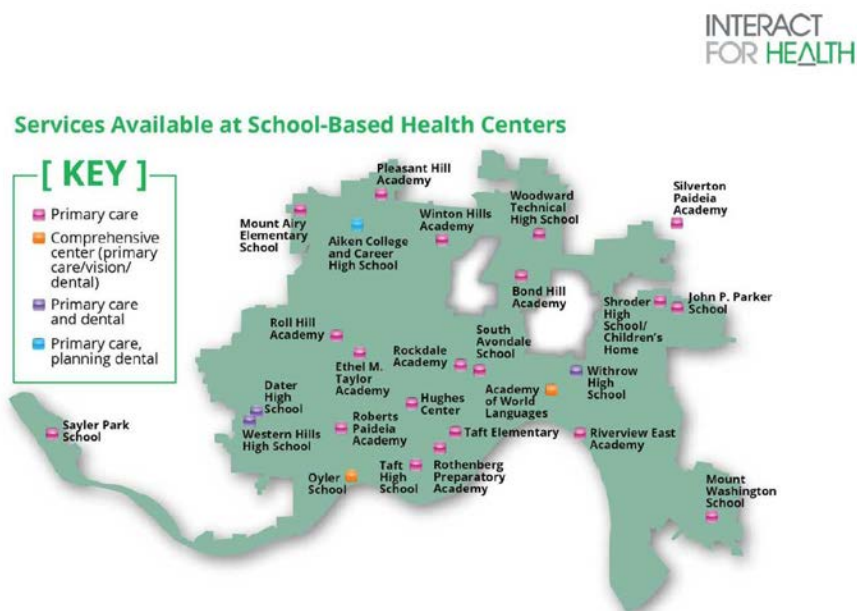
She informed the group that SBHCs are primary care service providers and are co-located in schools and staffed with nurse practitioners (NP), support persons or school health aids with many being registered nurses, and supervising or part-time medical doctors (pediatricians).

The Centers can also be designed or expanded to include or refer students for mental and behavioral health, dental, and vision services.

SBHCs ensure that kindergarteners through high schoolers can get a flu shot, have an annual physical, have their teeth examined and their eyes checked, or speak to a mental health counselor in a safe, nurturing place.

Ms. Wolgin updated the group on school nurses working with the SBHCs and the below SBHC sites.

She provided the following map showing the location of the Health Centers.



Ms. Wolgin reported the following data for services provided for 2019/2020.

- 24 sites serving 25 schools for 29,938 primary care visits
- Cincinnati Health Department (CHD Dental Centers) provided 22,550 visits to 9,871 students. CPS Transportation made this possible
- Portable dental visits reduced trips
- Oylar and AWL Vision Centers served 4,087 students—67 percent needed glasses

She also stated that services can only be provided to students whose parents have given permission for the service.

Please find below data showing an overview of services delivered.

INTERACT
FOR HEALTH

Services Delivered

Service	Students	2019/2020	2018/19
Primary Care	16,397	29,938	34,832
Dental	9871	18,323	22,550
Vision	4087	3781	4087

She informed the Committee that a Wellness Center has opened at the Academy of World Languages, offering Dental, Primary Care and Vision service.

A Dental Center was also opened at Aiken High School and planning is in the works to offer dental services at Roberts Academy.

A copy of the full presentation is attached at the end of this report.

Committee member Bolton inquired about deeper vision tests offered at AWL and Oyler, be offered to all CPS students. She referenced if all students with IEPs have had the extra vision test.

Ms. Wolgin reported that heavier vision testing showed 67 percent of students who took the normal test and then took the deeper test, needed glasses.

ACTION: Ms. Wolgin reported that she will revisit kids who have been checked for vision and conduct a deeper vision test to determine if there any other underlying vision concerns.

Ms. Wolgin informed the Committee that school nurses who attended training received \$600 and better, accurate vision testing equipment and that students with IEPs (Individualized Education Plan) were referred to AWL or Oyler for deeper testing. Assistant Superintendent Bunte will follow-up.

Ms. Bolton also inquired about the detection of COVID-19 symptoms for students that may only be asthmatic.

She reported that asthmatic students will need to be identified as a barometer in comparing symptoms in diagnosing if symptoms are COVID-19 related or asthmatic.

Mind Peace

Susan Shelton, Executive Director for Mind Peace, updated the Committee on the following information contained in her report.

She reported that MindPeace's mission is to ensure a *seamless system* of mental health care for children and adolescents which meets specific characteristics of *quality*, provides a *continuum of care*, has system *connections*, and is *affordable*.

The following are the organization's Key Areas of Focus:

- Improved School-Based Mental Health Services
- Collaboration with Pediatricians
- Helping children and their families access brain health supports by removing systemic barriers to care

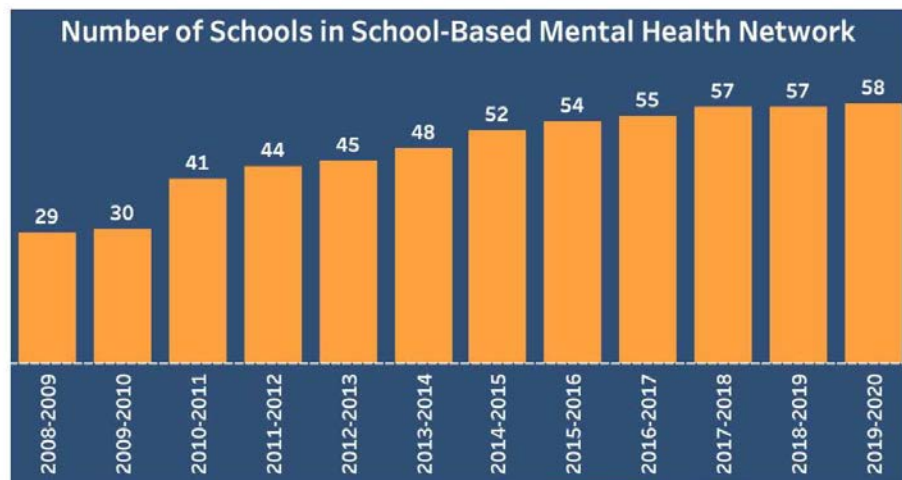
She informed the Committee about CPS' following Lead Mental Health Partners. These partners were chosen by the Community Learning Center as the Lead Mental School Based Health partners. Some partnerships have been for 10 to 12 years.

- Beech Acres Parenting Center;
- Central Clinic
- Child Focus
- The Children's Home of Cincinnati
- Cincinnati Children's Hospital Medical Center
- Counseling Source
- Greater Cincinnati Behavioral Health Services
- Lighthouse Youth Services

- St. Aloysius
- St. Joseph Orphanage
- Talbert House

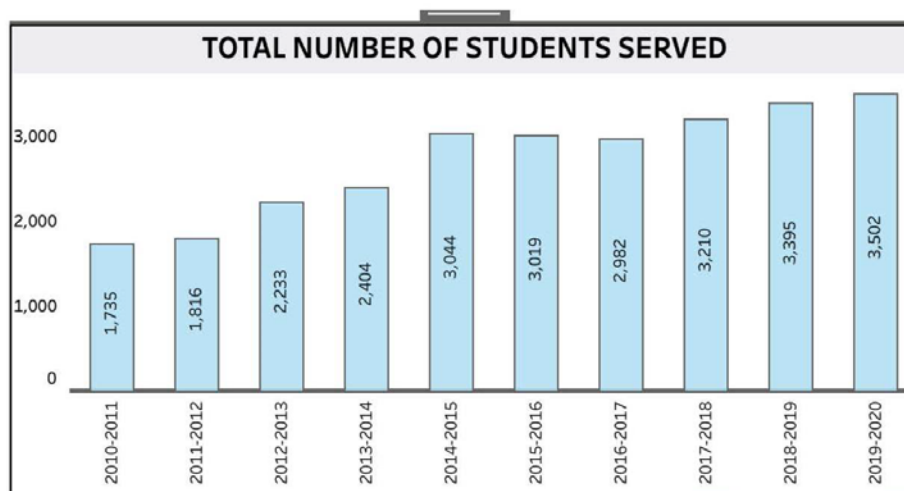
Ms. Shelton updated the group on the following data charts:

2019-2020 Data: Access to Care

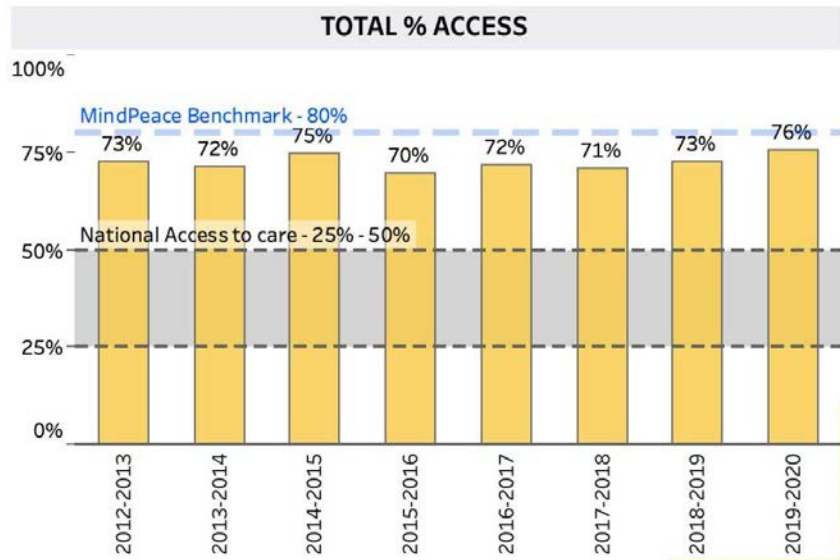


CANS and Gamble Montessori Elementary will be added this school year!

2019-2020 Data: Treatment



2019-2020 Data: Connecting to Care



Committee members Bolton and Lindy complimented Ms. Shelton on the work that Mindpeace is doing in servicing students and the reporting of data.

ACTION: Ms. Bolton recommended that Superintendent Mitchell and Assistant Superintendent Bunte work on getting the message out to the community for those worried about health, to send their students to CPS due to the many health services that are provided by the District. She advised the Administration to work on getting the word out to the community about the services in the next several weeks.

ACTION: Ms. Bolton, in reference to wifi expansion for academics and servicing of students, advised the Administration to work with the District's governmental liaisons to help extend the relaxed communication with patients, in providing telehealth services, through remote communications technologies that the government put in place. She would like the initiative to be extended to the end of COVID-19.

Please click on this link for information about the relaxed telehealth.

<https://www.hhs.gov/hipaa/for-professionals/special-topics/emergency-preparedness/notification-enforcement-discretion-telehealth/index.html>

ACTION: Committee Chairperson Bates referred Ms. Bolton's above extension request to the Finance Committee for discussion.

Ms. Shelton informed the Committee that Mindpeace collaborated and worked jointly with partners, with the District's Administration to incorporate Positive Behavioral Interventions and Supports (PBIS), lead psychologists, principals, assistant principals, resource coordinators and counselors to provide services in addressing COVID-19.

A copy of the full report is available in the Board office and upon request.

Nutritional Issues

Ms. Bolton expressed concern about possible confusion around childcare centers being able to provide food since CPS is providing meals five days a week.

Chairperson Bates informed the Committee about an email that she received from Jessica Shelly and Dan Betts regarding the summer food service program and the USDA not extending a waiver for this school year.

The District would have to operate under the National School Lunch program and would need to charge students for their meals and any meals served. The meals can only be provided to CPS students beginning August 24, 2020.

Ms. Trimble-Oliver will follow-up with Jessica Shelly, Food Service Director, about the summer food service program.

School Reopening Safety Plan Report

Sarah Trimble-Oliver, Chief Strategy Officer, updated the group on how paraprofessionals, teachers, and security staff have returned back into the buildings.

She also reported that Employee and Student Guides on COVID-19 have been released that outlines the District's Safety Plan.

Ms. Trimble-Oliver reported that the Administration reviewed safety plans for the schools and safety walkthroughs before staff returned to the buildings. A safety hotline was also created for staff to report any issues or concerns about processes that may not be working yet. Safety huddles were also conducted with principals.

Ms. Trimble Oliver informed the Committee about various successes and improvements of variables within the Safety Plan.

She also updated the Committee about the number of calls received on the Safety Hotline and advised that most of the calls were about facilities.

Safety Hotline

Date	Hotline Calls	Other Reports	Total
8/17/20	3	20	23
8/18/20	3	1	4
8/19/20	1	2	3

A copy of the full report is available in the Board office and upon request.

Committee member Lindy inquired about what coverage is available for students while their parents are teaching class. He stated that he has received many emails regarding this issue and parents brought to his attention childcare being available for teachers who have children in grades K-6. Concern emails also mentioned preschoolers in fourth grade not being able to take advantage of the program.

Superintendent Mitchell reported that the plan back in June 2020 was to have teachers working five days a week in the classrooms; therefore teachers and staff had sufficient notice to plan for childcare for the fall.

She also reported that the District, demonstration empathy for parents, decided to put together a K-6 *tutoring* program to benefit CPS employees' children as a way for employees to return to work to service students in the District.

Ms. Bolton inquired about protocols for entering buildings. Ms. Trimble-Oliver reported that each school has been provided with a template to establish protocols based on the makeup of the structure.

Ms. Bolton informed the group that there are requests for more plexi-glass screens where there are tables in preparation of returning back into the buildings.

Ms. Bolton informed the Committee about an App that can be used to answer questions about temperatures or any other questions. Superintendent Mitchell will look into the App and the plexi-glass.

Superintendent Mitchell will send out a reminder about temperature checks being conducted at all entrances and post security at the entrances from open to close.

The meeting adjourned at 12:21 p.m.

Health and Safety Committee

Melanie Bates, Chair
Eve Bolton
Ben Lindy

Staff Liaisons

Laura Mitchell, Superintendent
Susan Bunte, Assistant Superintendent
Sarah Trimble-Oliver, Chief Strategy Officer



SCHOOL-BASED HEALTH CENTERS IN CPS UPDATE AUG 2020

Growing Well Initiatives

- Convening
- Data Support
- Clinical Capacity Building
- Operational Capacity Building
- Communication
- Problem Solving



Growing Well Data

Represents:

- 38 School-Based Health Centers
- 11 School Districts
- 10 Health Care Providers
- 7 counties



What is a SBHC?

INTERACT
FOR HEALTH

- Primary care service providers are co-located in schools
- Staffing includes: Nurse Practitioner (NP), support person or school health aide, many have a RN, and supervising or part-time MD
- Can be designed or expanded to include or refer students for mental and behavioral health, dental, and vision services

National School-Based Health Alliance

INTERACT
FOR HEALTH

- SBHCs ensure that kindergarteners through high schoolers can get a flu shot, have an annual physical, have their teeth examined and their eyes checked, or speak to a mental health counselor in a safe, nurturing place – without the barriers that families too often face.
- SBHCs exist at the intersection of education and health and are the caulk that prevents children and adolescents from falling through the cracks.
- They provide care – primary health, mental health and counseling, family outreach, and chronic illness management – without concern for the student's ability to pay and in a location that meets students where they are: at school.
- SBHCs may vary based on community need and resources



School Nurse Working with SBHC

INTERACT
FOR HEALTH

When CHD is also the SBHC partner, more billable services

Working with other partners:

Partner with NP to achieve healthier students

Student needs parental consent for treatment

PowerSchool should have consent documented-some providers will see once with a verbal consent

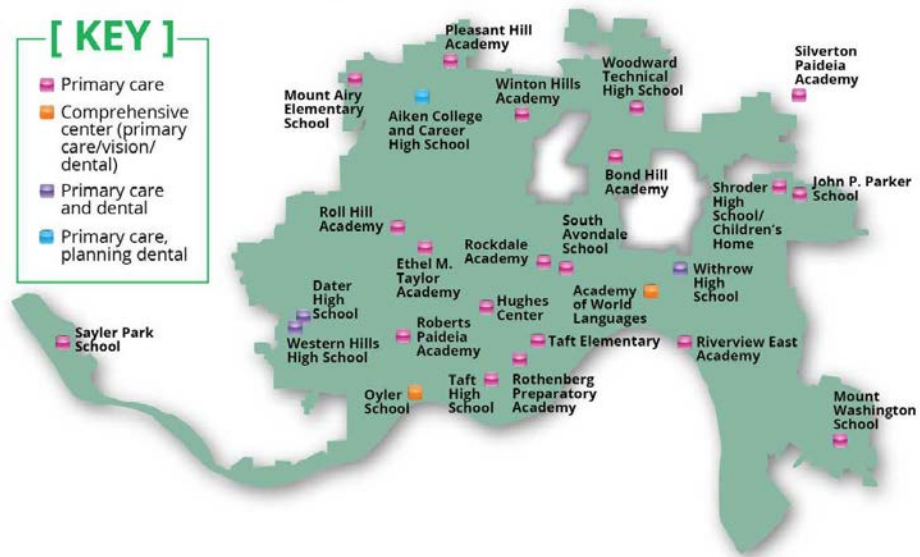
Community serving SBHCs can accept patients from outside the school; many use telehealth or virtual visits since COVID



Services Available at School-Based Health Centers

[KEY]

- Primary care
- Comprehensive center (primary care/vision/dental)
- Primary care and dental
- Primary care, planning dental



Primary Care



Comprehensive Centers are Growing



2019/2020 services

- 24 sites serving 25 schools for 29,938 primary care visits
- CHD Dental Centers provided 22,550 visits to 9,871 students. CPS Transportation made this possible
- Portable dental visits reduced trips
- Oyler and AWL Vision Centers served 4087 students 67% needed glasses



Services Delivered

Service	Students	2019/2020	2018/19
Primary Care	16,397	29.938	34,832
Dental	9871	18.323	22,550
Vision	4087	3781	4087



WHY School-based health?

- Easy access to primary care and prevention services
- Students perform better when they show up for class healthy and ready to learn



Benefits

- Enrolled students receive primary care and prevention services
- Consistent management of children with chronic conditions
- Improves school attendance
- Identifies and reduces barriers to learning



HOW is a Partnership

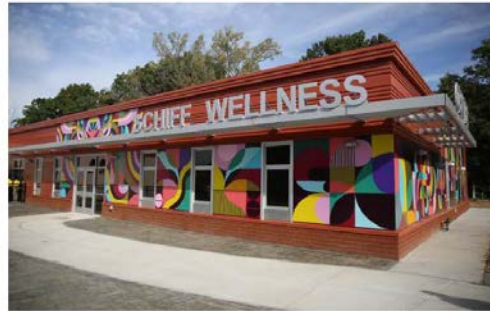
- Primary Care: CHD, Mercy, Children's, Crossroad and WinMED
- School Leadership and staff
- Parents and students
- Caring Community Partners
- Interact for Health and other funders



Newest 2019/2020 Sites

AWL Primary Care, Vision and Dental

- Aiken Dental Center opened
- Planning Roberts Dental



Questions?

Francie Wolgin

513-325-1070

fwolgin@interactforhealth.org