

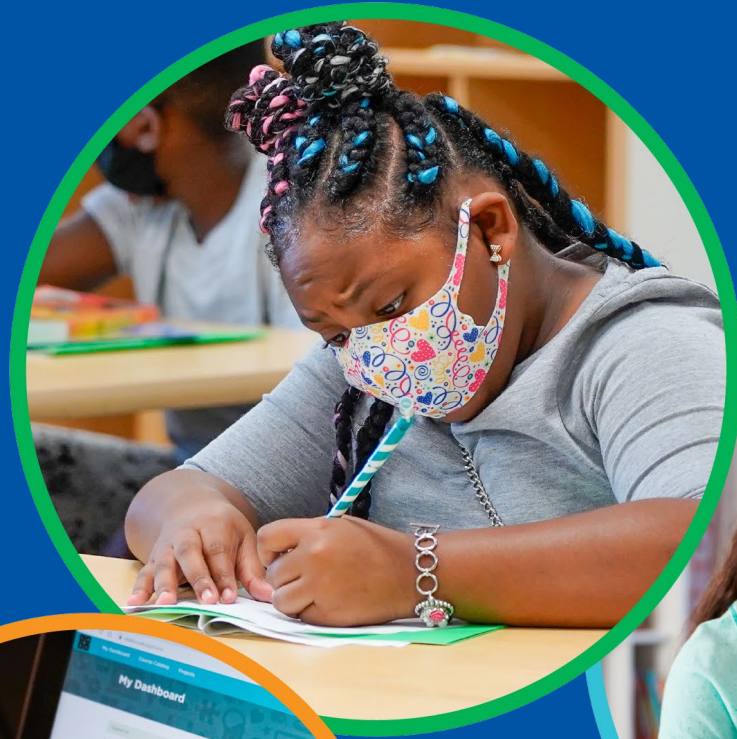
Board Presentation

November 16, 2020

BACKPACKS ON

LAPTOPS OPEN

FUTURES
BRIGHT!



PREPARING STUDENTS
FOR LIFE



PREPARING STUDENTS
FOR LIFE

Superintendent
Laura Mitchell

Agenda



What We'll Cover Tonight

- (1) Community Health Data
- (2) Update on Distance Learning

Consistency



Staffing



Big Picture



Sarah Trimble-
Oliver

Community Health Data



Community Trends

Hamilton County School Districts as of November 12, 2020

	Public Schools	Charter Schools	Private Schools
New Student COVID-19 Cases*	108	5	63
New Staff COVID-19 Cases*	85	6	21
Cumulative Student COVID-19 Cases**	343	15	202
Cumulative Staff COVID-19 Cases**	304	24	85
Total number of students enrolled	114,225	6963	34,838

*New cases are for the past one week. **Cumulative cases beginning 9/7/20

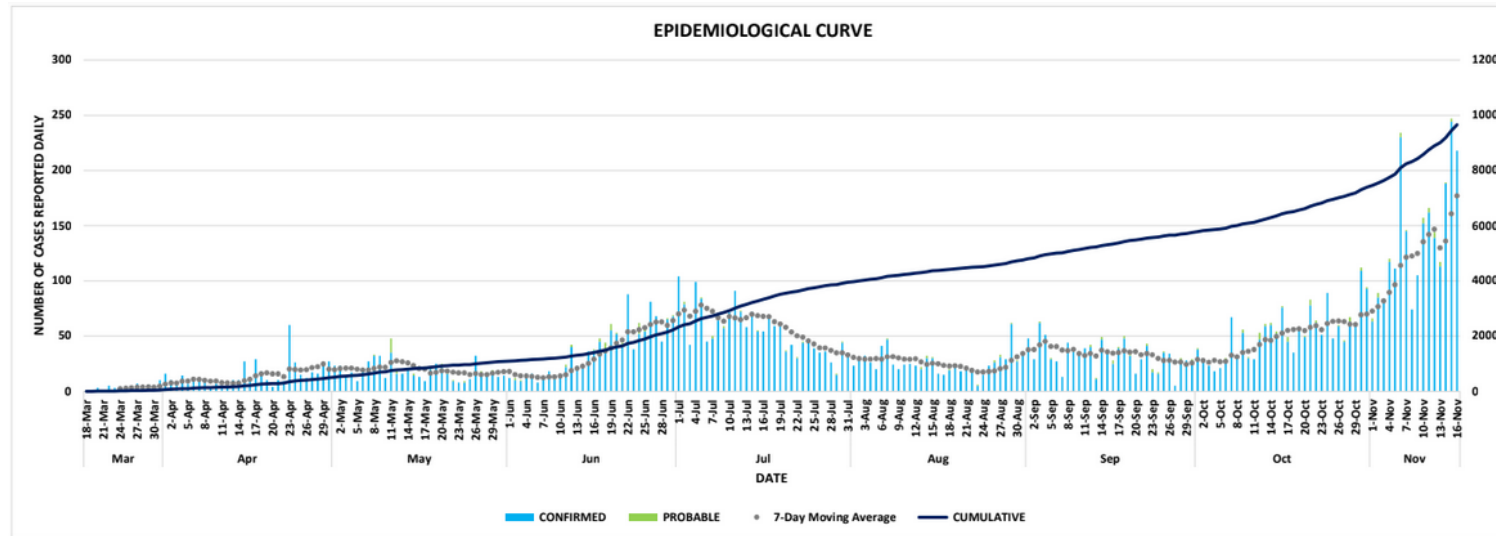
Health officials stress the importance of protection protocols in schools, including measuring the implementation of reliable protocols, maintaining protocols consistently over time, and measuring daily cases and quarantines in schools. Before September 2020, this data was not readily available for our region. However as charter, non-public, and public schools began opening for in-person learning in Hamilton County, and Ohio Department of Health created a reporting system for school COVID-19 cases, this data is now readily available to measure the amount of COVID-19 spread in schools. Early evidence is that there is little to no spread within schools in our region, however health officials are working on a system to better utilize the new data from schools that have re-opened in person.

For more information about measuring protection protocols, see Source: Ohio Department of Health COVID-19 Dashboard for Schools:

<https://coronavirus.ohio.gov/wps/portal/gov/covid-19/dashboards/schools-and-children/schools>

Community Trends

City of Cincinnati Daily New Cases as of November 16, 2020



UPDATED 11/7/2020 9:30am

DATA SHOWN FOR TODAY REFLECTS PAST 24 HOURS

*DATA IS PROVISIONAL CONTINGENT UPON COMPLETION OF CONTACT TRACING AND CONFIRMATION OF JURISDICTIONAL RESIDENCE

**IN ACCORDANCE WITH THE NEW CDC GUIDELINES, THE CDC EXPANDED (PROBABLE) CASE DEFINITION IS INCLUDED IN THIS REPORT. SEE: <https://www.cdc.gov/coronavirus/2019-ncov/covid-data/faq-surveillance.html>

**NUMBER OF INDIVIDUALS ACTIVELY MONITORED IS AN ESTIMATE, SUBJECT TO CHANGE

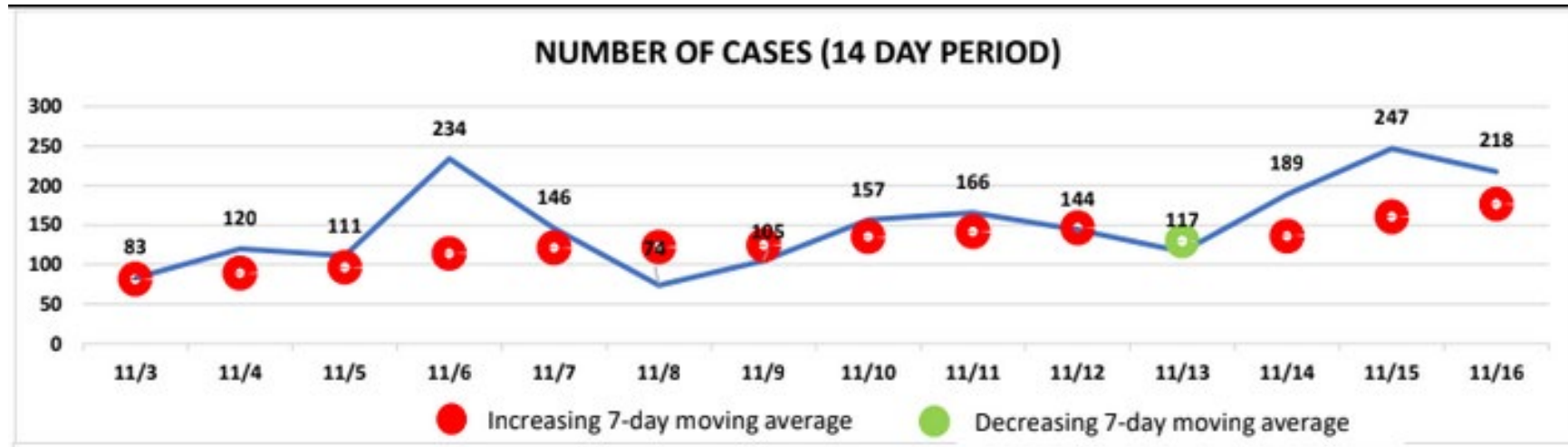
STATE DATA SOURCE: OHIO DISEASE REPORTING SYSTEM (ODRS)



The City of Cincinnati Epidemiological Curve shows the cumulative number of new cases (dark blue line), the daily number of new COVID-19 cases in the city (light blue column), and the 7-Day moving average of daily new cases (gray dotted line). The 7-Day moving average demonstrates the level of virus in the community. Health officials recommend using the 7-Day moving average and the suggested thresholds from the Harvard Global Health Institute based on Daily New Cases per 100,000 individuals (see further explanation of these thresholds at: [Source: The Health Collaborative — https://www.cincinnati-oh.gov/health/covid-19/covid-19-measures-to-inform-school-district-decisions//](https://www.cincinnati-oh.gov/health/covid-19/covid-19-measures-to-inform-school-district-decisions//))

Community Trends

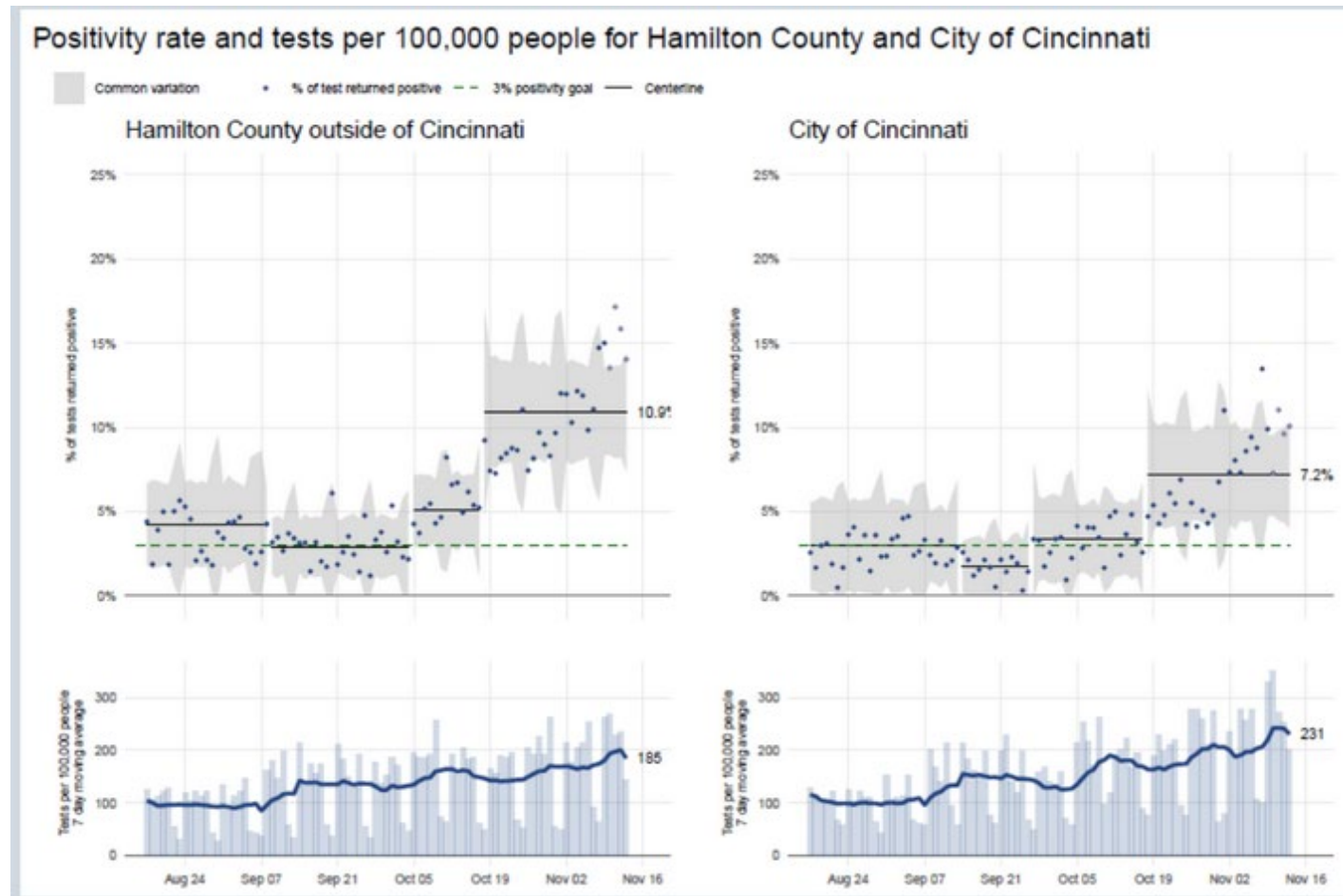
Number of Cases as of November 16, 2020



The City of Cincinnati Number of Cases in 14-Day Period shows the daily number of new cases (dark blue line) and the 7-Day moving average (red/green dots). The 7-Day moving average dot is red if the value increased from the prior day and green if it decreased from the prior day. Health officials recommend using the 7-Day moving average suggested thresholds from the Harvard Global Health Institute AND the 7-Day moving average 14-Day trends. See further explanation of these thresholds at: Source: The Health Collaborative — <https://www.cincinnati-oh.gov/health/covid-19/covid-19-measures-to-inform-school-district-decisions/>

Community Trends

Positivity Rate as of November 15, 2020



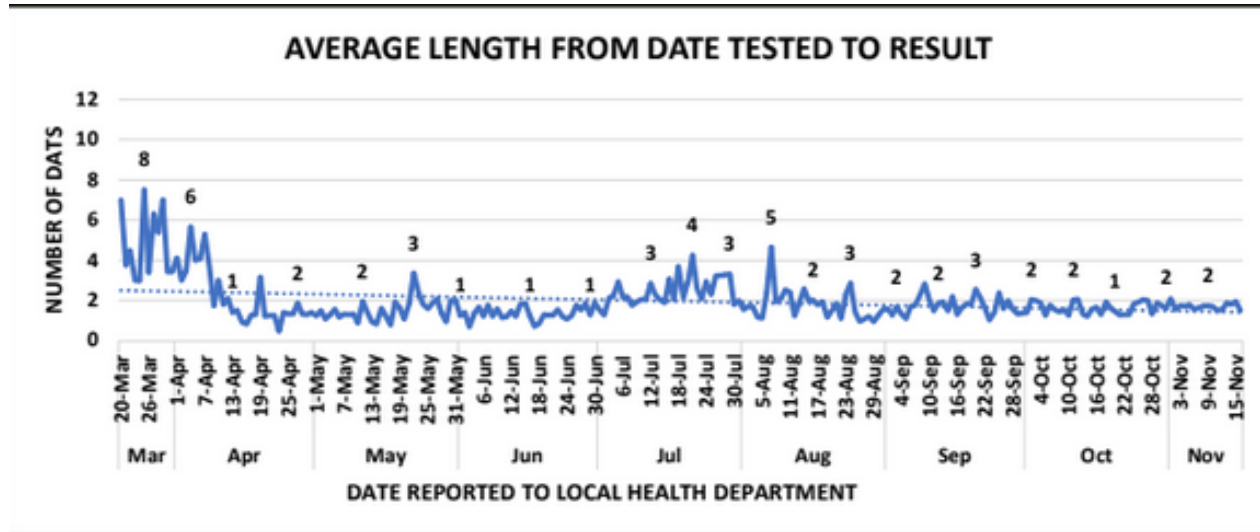
Hamilton County outside
of Cincinnati: 10.9%

City of Cincinnati: 7.2%

The positivity rate is the percent of COVID-19 tests that are positive out of all the tests administered each day. The rate is shown for the City of Cincinnati on the right, and for the county outside of the City of Cincinnati on the left. Health officials recommend a positivity rate below 5%. Source: The Health Collaborative — <https://www.cincinnati-oh.gov/health/covid-19/covid-19-measures-to-inform-school-district-decisions/>

Community Trends

Average Length from Date Tested to Result as of November 16, 2020



The City of Cincinnati Average Length from Date Tested to Result measure shows the average number of days from test administered to test result reported to local health department for positive results. This measure indicates whether our testing and reporting system can adequately handle the demand and is important to identifying and isolating positive cases. Source: City of Cincinnati COVID-19 Dashboard

<https://www.cincinnati-oh.gov/covid19/interactive-map/>



PREPARING STUDENTS
FOR LIFE

Tianay Amat

Distance Learning



CPS to go to Distance Learning

What's happening?

- Effective **Monday, November 23** through **Monday, January 4** all students will be in our 5-day per week distance-learning model.
- We will continue to monitor the health data.

Why was this decision made?

This decision was made primarily as a result of staffing challenges across CPS due to rising COVID-19 cases throughout Greater Cincinnati.

Communication Timeline

Date	Communication
<div> <div>✓</div> <div><input type="checkbox"/></div> </div> Tuesday 11/10	A district email and robocall was sent to all staff, as well as parents/guardians; A media advisory was issued
Thursday 11/12	<ul style="list-style-type: none"> • Union leadership discussions • Principal/Director meeting • Principals will receive a draft email and robocall script via email – please add school-specific details and share with your families as soon as possible
Friday 11/13	Principals and Directors meet with staff to discuss next steps
Monday 11/16	District-wide communication to go out to staff regarding roles and responsibilities
Ready to send Tuesday 11/17	Follow-up communications/reminders sent district-wide to families

CPS to go to Distance Learning

What's next for students?

- Please remind students to clear out lockers, take home all technology, jackets, snacks, water bottles, art projects, instruments, text books and instructional materials and anything else they have at school that they will need at home
 - A Group should take home items no later than Wednesday, November 18
 - B Group should take home items no later than Friday, November 20
- We are not initiating the “distance learning from current school” option at this time
 - Students will continue to receive assignments via Schoology through November 20
 - Please ensure students who did not come into your building during blended learning have the information they need via Schoology regarding the return to 5-day distance learning, including re-sending their schedules
- Students who have signed up for CDA may return to their original schools by calling the school office or the Customer Care Center at 513-363-0123

Public Access – Schools and Central Office

We want to be accessible to our public as much as possible, therefore:

- School offices will be open 2 days per week
 - Wednesday and Thursday 7:30-2:00
- Central Office remains open to public with current hours Monday – Friday

Principals

Academics:

Please send home the following in-person, via email, and via Schoology:

- Parent guide to distance learning
- Re-send distance learning schedules, by teacher, with office hours
- Contact information for schools (including school number and health office)
- Anything else that is needed to assist with transition back to distance learning
- Ensure students take home all learning materials and that teachers have all learning materials if working from home

Communications:

Friday 11/13 – Meet with staff, ensure paras are clear on their responsibilities

ASAP – Communicate schedules and other important information with families

Role-specific Details for Schools

Teachers

- Flexibility to teach from classrooms or home
- PD will continue on Mondays
- Pets and plants – if teachers choose to work from home, they need to take classroom pets and plants home with them
- Reacquaint yourself with Educator Guide to Distance Learning

Paras

- Paras who have access to technology may use it remotely or may come into buildings to access technology
- Primary goal → making sure students are attending google meets; other student support including social/emotional/academic
- Principals to meet with paras to review guidance by role (document will be provided by the Talent team)

Role-specific Details for Schools (continued)

Security

- Some will be reassigned from HS to elementary to cover food hubs, public access to schools
- Will receive a schedule from security district leadership

School clerical

Coverage needed during open hours; Wednesday and Thursday 7:30-2:00

Due to the nature of the work, dining services, facilities, transportation, custodial, and trades will continue to report to buildings

Central Office

Minimum of 2 days per week in building

- Work schedules to be collected by supervisors and sent to Directors by Friday November 20

Exceptions:

Due to the nature of the work, dining services, facilities, transportation, custodial, and trades will continue to report to buildings

Staff – General Expectations

- Central office and schools are open and work needs to be completed regardless of whether staff is working from home or in buildings
- HR will send out roles and responsibilities
- Everyone must fill out a weekly work form (to be provided by Talent team)
- Supervisors must review work hours with each team member to ensure effective and efficient work

Other Services

- 5-day meal packs distributed on Wednesdays (times TBD)
- Health centers will stay open (check web for current schedules)
- Mental health services – will continue via telehealth
- OT/PT – will continue via telehealth
- Nurses – will continue testing students by appointment in health office at each school
- Student teaching will occur remotely

Staff and Student Testing and Reporting

- Staff COVID testing – next week schedule continues; pause beginning November 23; testing resumes prior to January 4th return
- Staff and students need to continue to report positive cases (staff via the COVID hotline and students via nurse)

BACKPACKS ON | **LAPTOPS** OPEN | **FUTURES** BRIGHT!

Visit **CPS-K12.ORG/NEWS/BACKTOSCHOOL**
for more information.



/CincinnatiPublicSchools



/user/lamCPS



@lamCPS



@lamCPS



PREPARING STUDENTS
FOR LIFE