

---

# BILLIE NEWS!

[www.pleasanthill.k12.or.us](http://www.pleasanthill.k12.or.us)

*Vision Statement: Learning Today, Leading Tomorrow*



---

## Pleasant Hill Elementary

36386 Highway 58, Pleasant Hill, Or 97455

Phone: (541) 736-0400

Fax: (541) 736-0446

Attendance Line: 541-736-0411

Supervision: 7:45 - 2:30 p.m. Mon.-Thur.

7:45 - 1:30 p.m. Fri.

Office Hours: 7:30—4:00 p.m., Mon.-Fri.

Meal Prices: Breakfast 1.75 / Lunch 3.00

School Pay <https://www.schoolpay.com/>

Daily Schedule: 8:00 - 2:15 p.m., Mon.-Thur.

8:00 - 1:25 p.m., Fri.



---

## Attention Parents / Guardians!

### Monday, February 19<sup>th</sup>, Will be a School Day

Pleasant Hill School District is making this adjustment to the academic calendar.

Due to our unexpected recent school closure due to the weather January 16, 17, 18, and 19, we will be making up some instructional time on Monday, February 19th. Thank you for your understanding and your cooperation.

---

## Report Cards



Report cards should have been hand delivered by your student last Friday, February 5th. If you did not receive a copy of your child's report card, please contact your child's teacher.

## Statewide Immunization Exclusion Day, Feb. 21st!



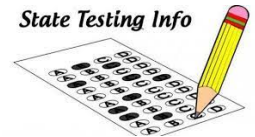
Wednesday, February 21, 2024, is the statewide immunization exclusion day. If your child is not up to date on the required vaccinations for the State of Oregon or does not have a valid exemption on file, they will be excluded from valuable instruction time.

You should have received a letter from both our school nurse and Lane County Public Health if your child could be possibly excluded due to missing immunizations.

## Oregon State Assessment Testing

The state of Oregon is required with the passage of a federal law Every Student Succeeds Act (ESSA) in 2015 to design and assess all students in certain subjects. Therefore, the state brought educators together to create the Oregon Statewide

State Testing Info



Assessments in the areas of English Language Arts (ELA), Math and Science. These assessments are designed to:

- help improve our understanding of how well we are teaching and supporting our students.
- Provide us with a snapshot of how our whole school system K-12 is performing in the areas of English Language Arts, Math and Science.
- helps to inform instruction, provide targeted resources and support to our schools.
- identify learning trends and ensure all students are being served.
- used as one of many multiple measures when making decisions about opportunities for students such as Tag, advanced placement classes, math pathways.

Oregon law (ORS 329.479) permits parents/guardians and adult students, 18 years of age or older, to annually opt-out of Oregon's statewide assessments in English Language Arts (ELA) and/or Mathematics, as well as the SEED Survey, by submitting this form to the school the student attends. The school shall provide any student who is excused from a statewide ELA or mathematics assessment with supervised study time while other students are testing. In addition, you can exempt your student out of the ELPA, English Language Proficiency Test and Science Assessment by completing the exemption form. All forms Opt-Out and Exemption can be found on the district website at:

<https://www.pleasanthill.k12.or.us/resources/osas-oregon-state-assessment-information>

Students in grades 3 - 5 will be taking the English language arts and the math assessment. In addition, students in 5th grade will also be assessed in science. Be watching for a message from your student's teacher as to when they will be administering the various assessments as the assessment window for our state opens March 5th and closes on June 14th.

### Top Billie Attender for the Month of January

Check with your student every Monday or the first day of the week to see if their class received a weekly Billie's Attendance Banner given to classes who have at least 90% attendance during the week.

Congratulations to Mrs. Craig's, Mr. Holladay's and Ms. Michlanski's classes for having the highest rate of attendance during the month of January. These classes will be receiving an extra PE class with Mr. Bofto.



### 2<sup>nd</sup> Quarter Perfect Attendance



This year as part of our school attendance initiative not only are classes working to earn the privilege of displaying an attendance banner on their class door and attempting to earn an extra PE class with Mr. Bofto. Each student who has perfect

attendance for the quarter, earns a perfect attendance certificate. The 2<sup>nd</sup> quarter of the year was November 13<sup>th</sup> - February 2<sup>nd</sup>.

We want to give a big shout out to our students who had perfect attendance the 2<sup>nd</sup> quarter of the school year: Al B., Allen B., Brooklynn C., Harlan L., Nalani R., Reagan T., Blue B., Tripper H., Delilah J., Avere M., Nova D., Brannigan S., Macey S., Gage V., Marshall A., Tylar C., Reece Z., Ruby B., James B., Rowan B., Colton F., Henry M., Ella T., Gunnar V., Kate B., Kodie M., Aysia M., Eivin S., Parker H., Graysen H., Atlas H., Devin K., Monroe M., Raelan R., Cecilia S., Lydia W., Owen W., Mollie B., Koletyn B., Ben D., Harper R., Sawyer Y., Ellawyn A., Knight B., Penelope D., Jeffrey E., Skye G., Lucy M., Jack H., Ila V., Miles A., Taylor E., Kiya F., Simon G., Claire K., Wyatt S., Truett P., Conner D., Julian L., Shamce M., Stephanie W., Kellen W., Mason Z., Ben F., Everly M., Kimber W., Kasen C., Isis E., Elsie K., Allie K., Olivia M., Ryder R., Louella W., Parker W., Elli D., McKenzie J., Audrey S., Maddi S., Dominic S., Cole A., Emmett B., Lyle G. Kallie G., Eli H., Kenzie J., Zia J., Emily K., Michael O., EB W., Xander A., Roz H., Oliver K., Dakota M., Jolene P., Violet R., Addi S., Max A., Jayce G., Aurelia L., Cassidy A., Sunny B., Jocelyne S., Eduardo M., Jaxon T., Ayla Howell and Hailey W.

---

## School Attendance Matters!



We realize some absences are unavoidable due to health problems or other circumstances. But we also know that when students miss too much school—regardless of the reason - it can cause them to fall behind academically. Your child is less likely to succeed if he or she is chronically absent—which means missing 18 or more days over the course of an entire school year. Research shows:

- Children chronically absent in kindergarten and 1<sup>st</sup> grade are much less likely to read at grade level by the end of 3<sup>rd</sup> grade.
- By 6<sup>th</sup> grade, chronic absence is a proven early warning sign for students at risk for dropping out of school.
- By 9<sup>th</sup> grade good attendance can predict graduation rates even better than 8<sup>th</sup> grade test scores.

Absences can add up quickly. A child is chronically absent if he or she misses just two days every month! We don't want your child to fall behind in school and get discouraged. **Please ensure that your child attends school every day and arrives on time.**

Here are a few practical tips to help support regular attendance:

- Make sure your children keep a regular bedtime and establish a morning routine.
- Lay out clothes and pack backpacks the night before.
- Ensure your children go to school every day unless they are truly sick.
- Avoid scheduling vacations or doctor's appointments when school is in session.
- Talk to teachers and the principal for advice if your children feel anxious about going to school.

- Develop back up plans to get to school if something comes up.

## Pause Parking Lane



Thank you to families who are helping keep our busy morning drop-off and end-of-day pick-up areas safe for students. We appreciate families who are remembering to stay in their cars while in the pause parking lane, the lane closest to the sidewalks and continuing to move forward as space becomes available, which helps to keep traffic moving. We know there are limited parking spaces in our parking lot, outside of arrival times (7:45 am-8:00 am) and dismissal time (2:15pm), families and volunteers are welcome to park in the pause parking lane, as long as they remain in their cars. Otherwise, we ask you please park in a parking space and walk up to meet your student.

## REMINDERS FROM THE OFFICE

**ARRIVAL TIME—7:45 a.m.:** Students may enter their classrooms at 7:45 a.m. **Attendance is taken and classes starts promptly at 8:00 a.m.**

**Breakfast:** Students may enter the cafeteria as early as 7:30 a.m. if they will be eating breakfast at school. All students will be sent to class by 7:55 as school starts promptly at 8:00 a.m. .

**PHONE MESSAGES:** We really appreciate and request that all of our families who discover throughout the school day their students' after school plans need to change **please call the school office before 1:30 p.m.** Bus notes are delivered to the classrooms around 1:45 p.m. daily.**On Early Release Days please call before 12:30 p.m.**

**Cell Phones and Digital Watches:** Students may bring cell phones, for safety reasons, and wear their watches to school. However, cell phones and the watch volume needs to remain off during the day to not distract students from their studies. In addition, the state of Oregon has declared that any cell phone or watch in a testing environment is a breach of testing security resulting in a test being voided, which we will begin OSAS testing in March. So, please help us reinforce that all cell phones and watches must be turned off while at school. Misuse of cell phones or watches will result in these items being placed in the office for a parent / guardian to pick-up.

## Family Resource Center News

Looking for a weekly activity to do with your preschool aged child and a place to meet other families? Check out the Family Resource Center's weekly

Storytime:

**When: Every Wednesday at 10:15 a.m.**



**Where: Pleasant Hill Community Center**

**What: Story, crafts, snacks, songs and fun!**

**Who: Parents and children under the age of 5**

**Questions? Please call Phoebe at 541-736-0495**

The Family Resource Center is excited to be offering parenting workshops & discussion classes. Make Parenting a Pleasure Series: 12 sessions focused on strategies and attitudes to help manage stress & create a positive, nurturing environment for your children. 5-7pm, Tuesdays beginning March 5<sup>th</sup> - May 28<sup>th</sup>. Registration required to reserve materials. Email [pcooksey@pleasanthill.k12.or.us](mailto:pcooksey@pleasanthill.k12.or.us) or call 541-736-0495.

### **Upcoming Events:**

- Feb. 12-13th - PTO Val-O-Gram Billie Buck Sales
- Feb. 13th - 2:30 p.m. PTO Mtg., PHCC
- Feb. 14th - Oregon's Birthday / Valentine's Day
- Feb. 16th - Billie Spirit Day! Wear your Billie Gear or blue and yellow
- Feb. 16th - 1:25 p.m. Early Release for All Elementary Students
- Feb. 19th - 8:00 - 2:15 p.m. School is in Session
- Feb. 19th - Billie Store is open for business during morning recess
- Feb. 23rd - Poppin Good Friday
- Feb. 23rd - Billie Spirit Day! Wear your Billie Gear or blue and yellow
- Feb. 23rd - 1:25 p.m. Early Release for All Elementary Students
- Feb. 27th - 100th Day of School - Dress as your 100 Year Old Self
- Feb. 27th - 1:35 p.m. Final Pleasant Hill Elementary OBOB Battle
- Feb. 28th - 1:35 p.m. K-2 Billie Spirit Assembly
- Feb. 28th - 2:30 p.m. Site Council, Library
- Feb. 29th - 1:35 p.m. Grades 3 -5 Billie Spirit Assembly
- Mar. 1st - Billie Spirit Day! Wear your Billie Gear or blue and yellow
- Mar. 1st - 1:25 p.m. Early Release for All Elementary Students



### **Community Opportunity:**

#### **DESTINATION IMAGINATION SHOWCASE FEBRUARY 24**

Three Pleasant Hill teams will be performing their Challenge solutions at the Destination Imagination Showcase here in Pleasant Hill Elementary on Saturday, February 24. Teams from around Oregon will be sharing their solutions in the Blue Gym, Music Room, and Elementary Gym. The final schedule is not yet available, but save time on February 24 to support the Pleasant Hill teams and discover more of the variety of opportunities for students participating in Destination Imagination.