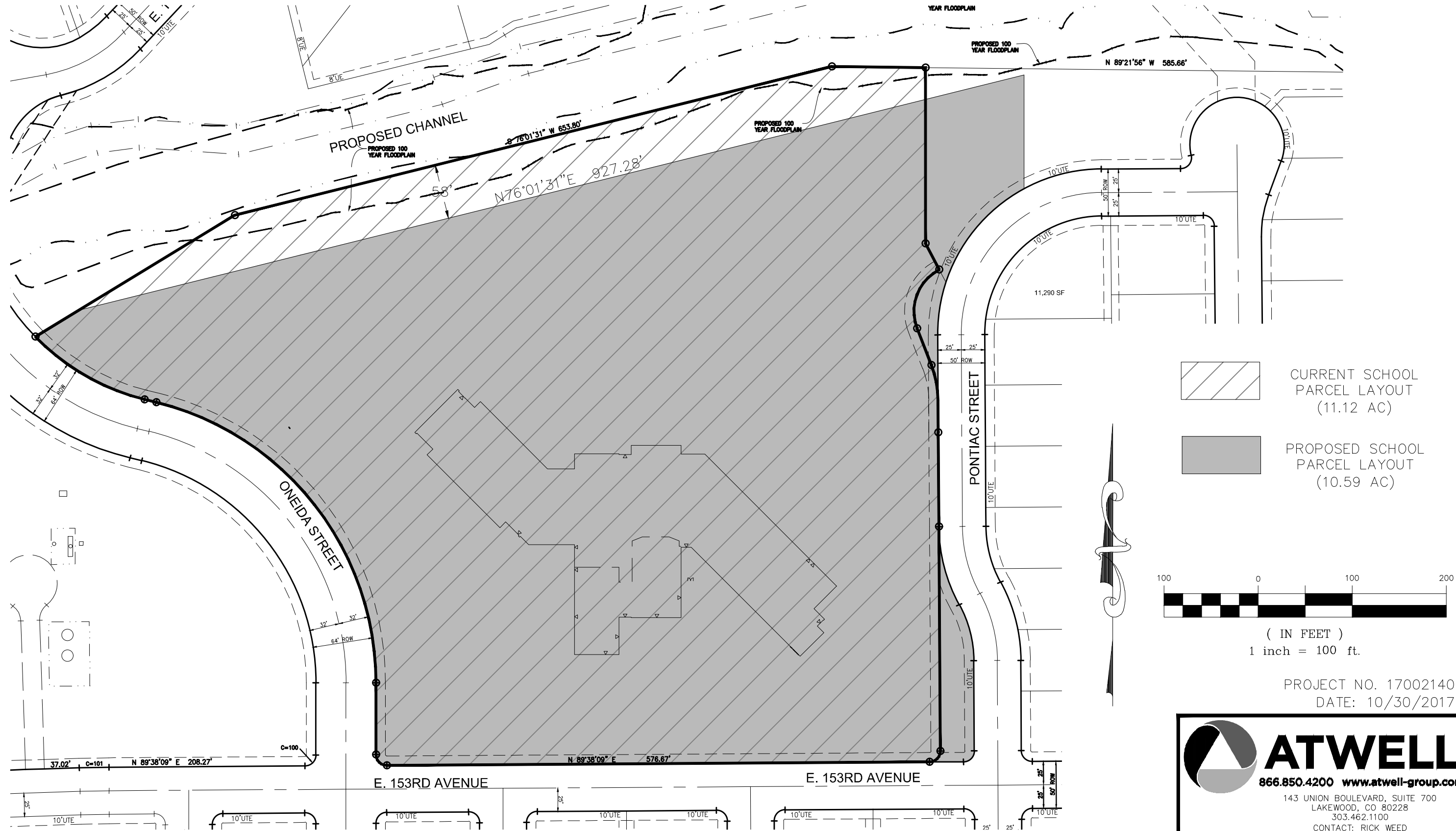


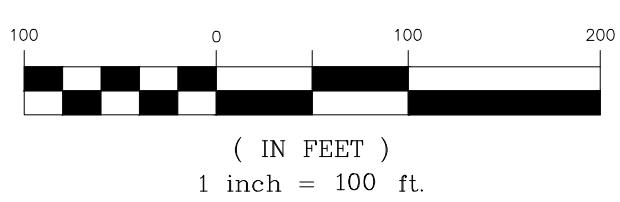
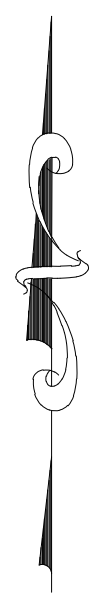


TALON POINTE

PROPOSED SCHOOL PARCEL REVISION



-  CURRENT SCHOOL PARCEL LAYOUT (11.12 AC)
-  PROPOSED SCHOOL PARCEL LAYOUT (10.59 AC)



PROJECT NO. 17002140
DATE: 10/30/2017



ATWELL

866.850.4200 www.atwell-group.com

143 UNION BOULEVARD, SUITE 700
LAKEWOOD, CO 80228
303.462.1100
CONTACT: RICK WEED
RWEED@ATWELL-GROUP.COM

K:\17002140\DWG\ENGINEERING\SCHOOL PROPERTY EXHIBIT.DWG 10/30/2017 2:25 PM MARISSA PADGETT

CAD FILE: SCHOOL PROPERTY EXHIBIT.DWG