



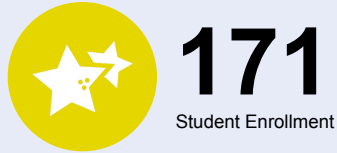
OREGON AT-A-GLANCE SCHOOL PROFILE

North Plains Elementary School

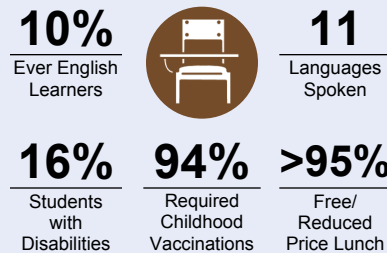
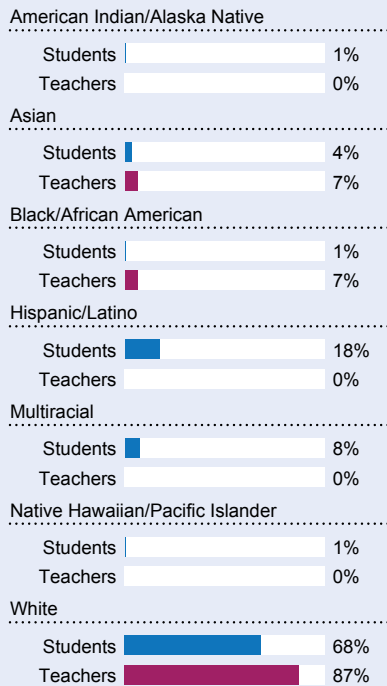
2021-22

PRINCIPAL: Kellie Petrick | GRADES: K-6 | 32030 NW North Ave, North Plains 97133 | 503-844-1630

Students We Serve



DEMOGRAPHICS

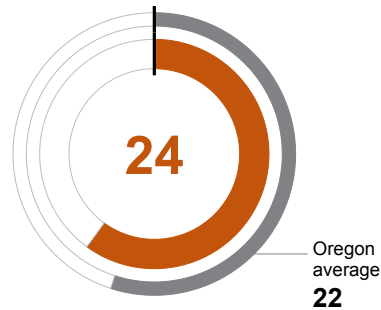


*<10 students or data unavailable

School Environment

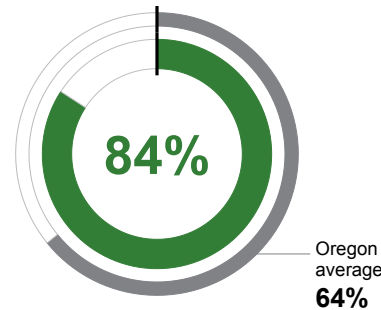
CLASS SIZE

Median class size.



REGULAR ATTENDERS

Students who attended more than 90% of their enrolled school days.



Academic Progress

INDIVIDUAL STUDENT PROGRESS

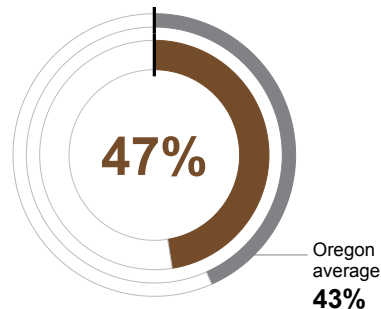
Year-to-year progress in English language arts and mathematics.

Data not available in 2021-22

Academic Success

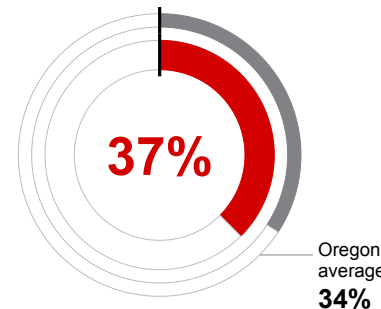
ENGLISH LANGUAGE ARTS

Students meeting state grade-level expectations.



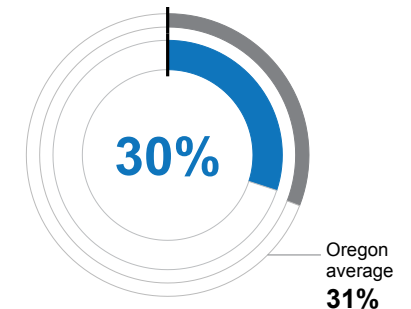
MATHEMATICS

Students meeting state grade-level expectations.



SCIENCE

Students meeting state grade-level expectations.



School Goals

More than ever, we focus on making sure all students feel welcomed and valued. Our stance is based on meeting each child where they are at in order to stretch and maintain growth. Knowing every student by name, strength, and need is our ultimate action step. With this in mind, we craft thoughtful experiences to mold the whole child - mind, body, and heart. Our staff commits to an inclusion model of service that fosters peer connections and high expectations for all students.

State Goals

The Oregon Department of Education is partnering with school districts and local communities to ensure a 90% on-time, four year graduation rate by 2025. To progress toward this goal, the state will prioritize efforts to improve attendance, provide a well-rounded education, invest in implementing culturally responsive practices, and promote continuous improvement to close opportunity and achievement gaps for historically and currently underserved students.

Safe & Welcoming Environment

At North Plains Elementary School, students are known by name, strength, and need. Staff members aim to start students' day in a positive manner by greeting them as they enter the building and the classroom, and teachers hold a morning meeting with their class in order to create strong relationships and practice positive social interactions. This school year, we empowered a 6th and 5th grade Student Council and a Next Level affinity group. Our student-centered routines, activities, and voice propel our larger community to be incredibly involved and supportive.



OREGON AT-A-GLANCE SCHOOL PROFILE CONTINUED

North Plains Elementary School

2021-22

Outcomes

Our Staff (rounded FTE)



11

Teachers



9

Educational
assistants



<1

Counselors/
Psychologists



76%

Average teacher
retention rate



77%

% of licensed teachers
with more than 3 years
of experience



No

Same principal in
the last 3 years

REGULAR ATTENDERS

American Indian/Alaska Native	<10 students or data unavailable
Asian	<10 students or data unavailable
Black/African American	<10 students or data unavailable
Hispanic/Latino	86%
Multiracial	62%
Native Hawaiian/Pacific Islander	<10 students or data unavailable
White	86%
Free/Reduced Price Lunch	84%
Ever English Learner	73%
Students with Disabilities	75%
Migrant	<10 students or data unavailable
Homeless	<10 students or data unavailable
Students in Foster Care	<10 students or data unavailable
Talented and Gifted	<10 students or data unavailable
Female	82%
Male	85%
Non-Binary	<10 students or data unavailable

ENGLISH LANGUAGE ARTS

<10 students or data unavailable
<10 students or data unavailable
<10 students or data unavailable
42%
<10 students or data unavailable
<10 students or data unavailable
48%
47%
50%
<10 students or data unavailable
<10 students or data unavailable
<10 students or data unavailable
<10 students or data unavailable
<10 students or data unavailable
46%
49%
<10 students or data unavailable

MATHEMATICS

<10 students or data unavailable
<10 students or data unavailable
<10 students or data unavailable
37%
<10 students or data unavailable
<10 students or data unavailable
36%
37%
50%
<10 students or data unavailable
<10 students or data unavailable
<10 students or data unavailable
<10 students or data unavailable
<10 students or data unavailable
39%
37%
<10 students or data unavailable

About Our School

BULLYING, HARASSMENT, AND SAFETY POLICIES

North Plains ES has a no-bullying policy. We believe in restorative practices and collaborative problem solving. School-wide positive reinforcement and reteach systems are in place. Students are taught expected behaviors for each area of the building, as well as expectations for unstructured areas like assemblies and recess. Our school counselor and our Student Success Coach provide an extra layer of support. We continue to implement a Social-Emotional Learning curriculum called Harmony SEL. All classes begin with a morning meeting to support the feeling of community and belonging in the school. To learn more, please visit www.hsd.k12.or.us/keepingstudentsafe, Board Policies JFCF & JFCF-AR, and our Standards of Student Conduct handbook.

EXTRACURRICULAR ACTIVITIES

Students at North Plains have an opportunity to participate in a variety of after-school activities, including band, drama, artistic expression, engineering, and basic robotics. We have materials and a location set up for Maker Space as well. Our STEAM coordinator is always looking for additional resources to serve our students in creative and engaging ways.

PARENT ENGAGEMENT

The North Plains Parent-Teacher Organization (PTO) is very involved and provides a variety of activities throughout the year. Our goal is to involve as many students and families as possible. We promote a Fun'd Run every Fall, a Holiday Gift Shop every winter, and a Community Carnival every spring. At the end of the school year, it was safe to welcome volunteers inside the school, which was a huge benefit for all involved. Our monthly 'Soar Time' community connections remained virtual, yet gathering remotely proved to be a useful approach that we will continue for increased convenience. Creating a sense of belonging and a celebration of diversity are the drivers for every informal and formal connection opportunity.

COMMUNITY ENGAGEMENT

The North Plains community is very supportive of our school. Students take walking tours of our local police department, fire department, McDonald's, and the city library. Our Chamber of Commerce is active and involved. In addition, Mayor Teri Lenahan is a visible presence in our school, especially in promoting and honoring youth who aspire to learn more about her role in the community. We reaped the benefits in partnering with the Giving Committee, Peak Chiropractic, McDonald's, and the Hillsboro Hops! On campus, we value the opportunity for our families to enroll their child or children in after-school care with Vermont Hills, whose top priority is extending genuine care and support from the school day to the evening.