



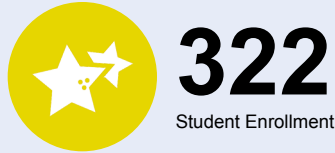
# OREGON AT-A-GLANCE SCHOOL PROFILE

## W L Henry Elementary School

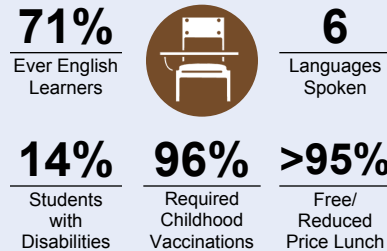
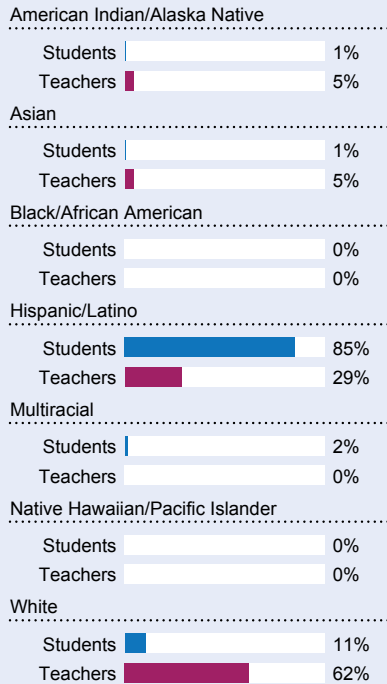
PRINCIPAL: Lisa Aguilar | GRADES: K-6 | 1060 SE 24th Ave, Hillsboro 97123 | 503-844-1690



### Students We Serve



### DEMOGRAPHICS



\*<10 students or data unavailable

### Special Note

The At-A-Glance School and District profiles tell a story about Oregon's schools and districts. The story is harder to tell this year as the COVID-19 pandemic significantly impacted our schools and the data we collect. As a result, statewide assessment and attendance data cannot be compared to prior years and are not shown here. We have included links to our website where you can view the 2020-21 statewide assessment and attendance data and read a detailed description of how these data were impacted. We're thankful for your partnership as we focus on care, connection and the creation of safe, inclusive and supportive learning environments.

### Academic Success

#### ENGLISH LANGUAGE ARTS

Students meeting state grade-level expectations.

For 2020-21 English Language Arts data please visit:

[www.oregon.gov/ode/schools-and-districts/reportcards/reportcards/Pages/Statewide-Assessment-Results-2021.aspx](http://www.oregon.gov/ode/schools-and-districts/reportcards/reportcards/Pages/Statewide-Assessment-Results-2021.aspx)

### School Environment

#### REGULAR ATTENDERS

Students who attended more than 90% of their enrolled school days.

For 2020-21 Regular Attenders data please visit:

[www.oregon.gov/ode/schools-and-districts/reportcards/reportcards/Pages/Regular-Attenders-2021.aspx](http://www.oregon.gov/ode/schools-and-districts/reportcards/reportcards/Pages/Regular-Attenders-2021.aspx)

#### MATHEMATICS

Students meeting state grade-level expectations.

For 2020-21 Mathematics data please visit:

[www.oregon.gov/ode/schools-and-districts/reportcards/reportcards/Pages/Statewide-Assessment-Results-2021.aspx](http://www.oregon.gov/ode/schools-and-districts/reportcards/reportcards/Pages/Statewide-Assessment-Results-2021.aspx)

### Academic Progress

#### INDIVIDUAL STUDENT PROGRESS

Year-to-year progress in English language arts and mathematics.

Data not available in 2020-21

#### SCIENCE

Students meeting state grade-level expectations.

For 2020-21 Science data please visit:

[www.oregon.gov/ode/schools-and-districts/reportcards/reportcards/Pages/Statewide-Assessment-Results-2021.aspx](http://www.oregon.gov/ode/schools-and-districts/reportcards/reportcards/Pages/Statewide-Assessment-Results-2021.aspx)

### School Goals

At W.L. Henry, we are guiding students to become socially-just, global citizens through the power of bilingualism, cultural proficiency and academic excellence. We are proud to be a multicultural, caring, hardworking, resilient community that is devoted to equity. We have strong relationships with our families and work together to ensure our students are set up for academic and social-emotional success. Previously, our students demonstrated Level 5 growth in Math and English Language Arts and our 6th graders not only performed as well as their Oregon peers in ELA SBAC, they are also bilingual and prepared for middle school success.

### State Goals

The Oregon Department of Education is partnering with school districts and local communities to ensure a 90% on-time, four year graduation rate by 2025. To progress toward this goal, the state will prioritize efforts to improve attendance, provide a well-rounded education, invest in implementing culturally responsive practices, and promote continuous improvement to close opportunity and achievement gaps for historically and currently underserved students.

### Safe & Welcoming Environment

W.L. Henry honors the diversity and worth of all students, individuals and groups, and is committed to both educating and providing a safe space for everyone inclusive of all races, ethnicities, religions, immigration status, LGBTQ+ status, or any other basis. We believe that students learn best when they feel safe and valued. Our staff is skilled, caring, and dedicated to fostering each student's social-emotional, academic and personal growth in a supportive and welcoming environment.



# OREGON AT-A-GLANCE SCHOOL PROFILE CONTINUED

## W L Henry Elementary School



### Outcomes

#### Our Staff (rounded FTE)



**18**

Teachers



**10**

Educational assistants



**1**

Counselors/  
Psychologists



**86%**

Average teacher retention rate



**84%**

% of licensed teachers with more than 3 years of experience



**Yes**

Same principal in the last 3 years

	REGULAR ATTENDERS	ENGLISH LANGUAGE ARTS	MATHEMATICS
American Indian/Alaska Native			
Asian			
Black/African American			
Hispanic/Latino			
Multiracial			
Native Hawaiian/Pacific Islander			
White			
Free/Reduced Price Lunch			
Ever English Learner			
Students with Disabilities			
Migrant			
Homeless			
Talented and Gifted			
Female			
Male			
Non-Binary			

### About Our School

#### BULLYING, HARASSMENT, AND SAFETY POLICIES

Our number one priority and goal is to ensure students are safe. To that end, we have a network of adults, systems, structures, protocols, and other supports we leverage to keep our school as safe as possible. To learn more, please visit [www.hsd.k12.or.us/keepingstudentsafe](http://www.hsd.k12.or.us/keepingstudentsafe). Ensuring safety also means that positive, respectful, and responsible behavior is expected at all times. We do not tolerate bullying or harassment. To learn more about the District's definition and response to bullying and/or harassment, please see Board Policies JFCF and JFCF-AR: Hazing, Harassment and Bullying, as well as the Standards of Student Conduct.

#### EXTRACURRICULAR ACTIVITIES

We provide a variety of after school programming for our students, and make every effort to ensure there are opportunities for students across all grade levels. We offer: Ballet Folklorico, Basketball, Chess for Success, Chicas, Cooking Club, Crazy 8s Math, Drama Club, Engineering, Imagine Learning, LEGOs, STEAM Activities, Soccer, Track and Field, Tutoring upon invitation, and Braintastic (for our students identified as TAG), with more to come.

#### PARENT ENGAGEMENT

Parents/guardians are always welcome and encouraged to participate in any way possible with our school community. We have a Parent Teacher Organization (PTO) and a Parent Advisory Committee (PAC) who work together to support fundraising and community-building experiences such as movie nights and cultural events, and who share their voice through recommendations made to the principal to enhance student success. Parents/guardians can be involved in a variety of ways: encouraging school attendance, volunteering in the classroom/field trips, participating in Coffee w/the Principal, participating in the PTO/PAC, attending evening events, and so on.

#### COMMUNITY ENGAGEMENT

We are excited to continue our partnerships with the Adelante Mujeres Preschool Program, Calvary Chapel Worship Center, First Congregational Church, First Tech Credit Union, Head Start Preschool Program, Intel, Izzy's, Kiwanis Club of Hillsboro, McDonald's, Oregon Metro, Office Depot, the Oregon Food Bank, Schoolhouse Supplies, SMART Reading (supported by Applied Materials), and wonderful individuals who support us in various ways. We value and appreciate our community members and community partnerships, and are always looking to expand our connections.