

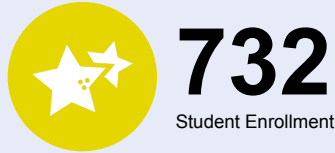


OREGON AT-A-GLANCE SCHOOL PROFILE South Meadows Middle School

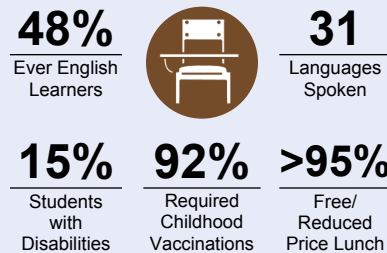
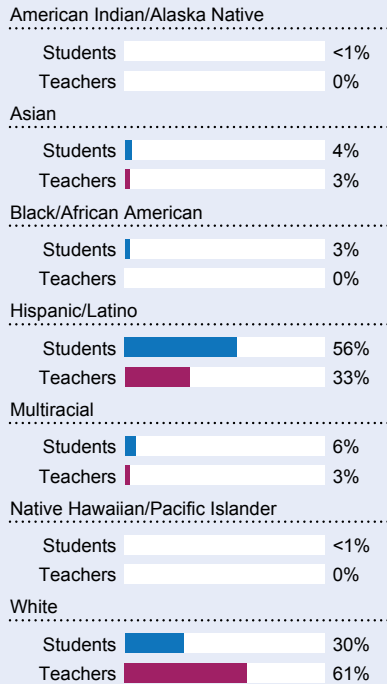
PRINCIPAL: Justin Welch | GRADES: 7-8 | 4960 SE Davis Road, Hillsboro 97123 | 503-844-1220



Students We Serve



DEMOGRAPHICS



*<10 students or data unavailable

Special Note

The At-A-Glance School and District profiles tell a story about Oregon's schools and districts. The story is harder to tell this year as the COVID-19 pandemic significantly impacted our schools and the data we collect...

Academic Success

ENGLISH LANGUAGE ARTS

Students meeting state grade-level expectations.

For 2020-21 English Language Arts data please visit:

www.oregon.gov/ode/schools-and-districts/reportcards/reportcards/Pages/Statewide-Assessment-Results-2021.aspx

School Environment

REGULAR ATTENDERS

Students who attended more than 90% of their enrolled school days.

For 2020-21 Regular Attenders data please visit:

www.oregon.gov/ode/schools-and-districts/reportcards/reportcards/Pages/Regular-Attenders-2021.aspx

MATHEMATICS

Students meeting state grade-level expectations.

For 2020-21 Mathematics data please visit:

www.oregon.gov/ode/schools-and-districts/reportcards/reportcards/Pages/Statewide-Assessment-Results-2021.aspx

Academic Progress

INDIVIDUAL STUDENT PROGRESS

Year-to-year progress in English language arts and mathematics.

Data not available in 2020-21

SCIENCE

Students meeting state grade-level expectations.

For 2020-21 Science data please visit:

www.oregon.gov/ode/schools-and-districts/reportcards/reportcards/Pages/Statewide-Assessment-Results-2021.aspx

School Goals

South Meadows is focused on maximizing success and growth for each student through: 1. Improving conceptual understanding of key Mathematical concepts; 2. Increasing student capacity in reading and writing by using AVID strategies...

State Goals

The Oregon Department of Education is partnering with school districts and local communities to ensure a 90% on-time, four year graduation rate by 2025. To progress toward this goal, the state will prioritize efforts to improve attendance, provide a well-rounded education, invest in implementing culturally responsive practices...

Safe & Welcoming Environment

At South Meadows, we want every student and community member to feel welcome, respected, and safe. To ensure this, we collaborate with students to craft school rules that support their learning and involvement in the education process. Parents are invited to multiple monthly meetings to give input, ask questions, and support the progress of the school...



OREGON AT-A-GLANCE SCHOOL PROFILE CONTINUED

South Meadows Middle School

2020-21

Outcomes

Our Staff (rounded FTE)



28

Teachers



12

Educational assistants



3

Counselors/ Psychologists



80%

Average teacher retention rate



75%

% of licensed teachers with more than 3 years of experience



No

Same principal in the last 3 years

| | REGULAR ATTENDERS | ENGLISH LANGUAGE ARTS | MATHEMATICS |
|----------------------------------|-------------------|-----------------------|-------------|
| American Indian/Alaska Native | | | |
| Asian | | | |
| Black/African American | | | |
| Hispanic/Latino | | | |
| Multiracial | | | |
| Native Hawaiian/Pacific Islander | | | |
| White | | | |
| Free/Reduced Price Lunch | | | |
| Ever English Learner | | | |
| Students with Disabilities | | | |
| Migrant | | | |
| Homeless | | | |
| Talented and Gifted | | | |
| Female | | | |
| Male | | | |
| Non-Binary | | | |

About Our School

BULLYING, HARASSMENT, AND SAFETY POLICIES

At South Meadows Middle School, the safety and wellbeing of our students is our top priority. To this end, we work daily on character development, building positive conflict-resolution skills, and promoting acceptance for all. When bullying, harassment, or unsafe behavior does occur, our administrators quickly work with involved parties to find a positive solution. All staff are trained on how to identify and refer students to administration and counselors when there are behavior concerns or safety issues. With this emphasis on safety and positive behavior, we have a strong culture and climate at our school.

EXTRACURRICULAR ACTIVITIES

We will strive to add to these offerings; however, here is our current list: Student Equity Leadership, ZONE Sports, Dungeons and Dragons, Homework Club, Drama Club, MESA, TRIO, Adelante Chicas, Latino Youth Program, STEM and LEGO Robotics, Chess, Q Lunch, Wrestling, Open Gym.

PARENT ENGAGEMENT

South Meadows enjoys a strong and diverse parent population. Parents are invited to attend monthly meetings with administrators to discuss school goals, ask questions, give suggestions, and create new opportunities. We have an additional monthly meeting with our local high school to streamline our parent involvement as a feeder system. The school supports parents who would like to organize formal parent groups such as a Parent Advisory Council or Parent-Teacher Organization. Our families are welcome to volunteer and visit. Teachers stay in close contact with parents in our advisory classes and use our online gradebook system for two-way communication.

COMMUNITY ENGAGEMENT

South Meadows has built strong community partnerships with many organizations, a few examples are: Adelante Mujeres, Oregon Agriculture in the Classroom, Saturday Academy, Parks and Recreation, the Portland Trailblazers, Intel, and many others. We actively seek new partnerships to foster student growth and opportunity. Our belief is that the more the students and families see their school connected to the larger community, the more engaging and relevant our instruction and outreach will be.