



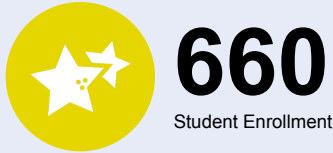
OREGON AT-A-GLANCE SCHOOL PROFILE

J W Poynter Middle School

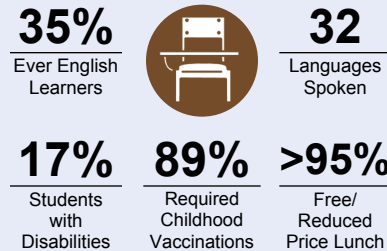
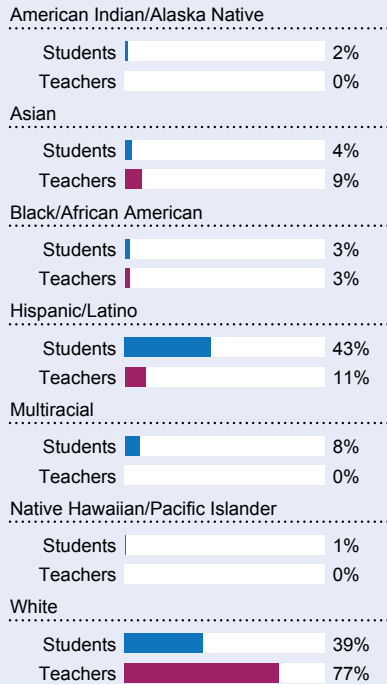
PRINCIPAL: Jon Pede | GRADES: 7-8 | 1535 NE Grant St, Hillsboro 97124 | 503-844-1580

2020-21

Students We Serve



DEMOGRAPHICS



*<10 students or data unavailable

Special Note

The At-A-Glance School and District profiles tell a story about Oregon's schools and districts. The story is harder to tell this year as the COVID-19 pandemic significantly impacted our schools and the data we collect. As a result, statewide assessment and attendance data cannot be compared to prior years and are not shown here. We have included links to our website where you can view the 2020-21 statewide assessment and attendance data and read a detailed description of how these data were impacted. We're thankful for your partnership as we focus on care, connection and the creation of safe, inclusive and supportive learning environments.

Academic Success

ENGLISH LANGUAGE ARTS

Students meeting state grade-level expectations.

For 2020-21 English Language Arts data please visit:

www.oregon.gov/ode/schools-and-districts/reportcards/reportcards/Pages/Statewide-Assessment-Results-2021.aspx

School Environment

REGULAR ATTENDERS

Students who attended more than 90% of their enrolled school days.

For 2020-21 Regular Attenders data please visit:

www.oregon.gov/ode/schools-and-districts/reportcards/reportcards/Pages/Regular-Attenders-2021.aspx

MATHEMATICS

Students meeting state grade-level expectations.

For 2020-21 Mathematics data please visit:

www.oregon.gov/ode/schools-and-districts/reportcards/reportcards/Pages/Statewide-Assessment-Results-2021.aspx

Academic Progress

INDIVIDUAL STUDENT PROGRESS

Year-to-year progress in English language arts and mathematics.

Data not available in 2020-21

SCIENCE

Students meeting state grade-level expectations.

For 2020-21 Science data please visit:

www.oregon.gov/ode/schools-and-districts/reportcards/reportcards/Pages/Statewide-Assessment-Results-2021.aspx

School Goals

Poynter Middle School strives to create a welcoming and nurturing environment for young teenage students by attending to their mental and physical well-being as well as providing a robust learning environment. Through offerings such as our Dual Language program, special education program, variety of electives, arts, and strong core content classes, we work to prepare students for high school and beyond.

State Goals

The Oregon Department of Education is partnering with school districts and local communities to ensure a 90% on-time, four year graduation rate by 2025. To progress toward this goal, the state will prioritize efforts to improve attendance, provide a well-rounded education, invest in implementing culturally responsive practices, and promote continuous improvement to close opportunity and achievement gaps for historically and currently underserved students.

Safe & Welcoming Environment

Poynter Middle School provides a welcoming and safe environment through an equity lens. We focus on social and emotional growth, physical wellbeing, creating an inclusive environment, and building a community. We use restorative practices, have a full-time wellness counselor, and include PBIS and Character Strong lessons in our advisory program. Our Special Education department focuses on inclusion with a goal of preparing students to earn a standard diploma upon high school graduation. We have clubs such as GSA.



Outcomes

Our Staff (rounded FTE)



28

Teachers



9

Educational assistants



3

Counselors/
Psychologists



87%

Average teacher retention rate



73%

% of licensed teachers with more than 3 years of experience



Yes

Same principal in the last 3 years

	REGULAR ATTENDERS	ENGLISH LANGUAGE ARTS	MATHEMATICS
American Indian/Alaska Native			
Asian			
Black/African American			
Hispanic/Latino			
Multiracial			
Native Hawaiian/Pacific Islander			
White			
Free/Reduced Price Lunch			
Ever English Learner			
Students with Disabilities			
Migrant			
Homeless			
Talented and Gifted			
Female			
Male			
Non-Binary			

About Our School

BULLYING, HARASSMENT, AND SAFETY POLICIES

Poynter Middle School creates a multiple level student management system plan, which includes feedback from many Poynter stakeholders and offers a variety of supports. We focus on restorative practices for student conflict, and include PBIS and Character Strong lessons in advisory to proactively address student behavior. Students at Poynter have the ability to submit a harassment report if needed. They also have access to our Wellness Center, as well as two academic counselors and a wellness counselor.

EXTRACURRICULAR ACTIVITIES

Poynter Middle School has a variety of extracurricular activities, including the following: LEGO Robotics, Drama Club, Homework Club, Technology Club, STEAM Club, Choir, Band, Dances, Plays, Chess Club, Oregon Battle of the Books, Zone Sports, and Game Club.

PARENT ENGAGEMENT

We engage Poynter parents through: Volunteer opportunities, Monthly Principal Chat, Weekly newsletter, and Remind notices.

COMMUNITY ENGAGEMENT

Poynter Middle School has worked with the following groups in the past few years for community engagement: Synopsys Corporation, Hillsboro Food Pantry, Boys and Girls Club, Hillsboro Presbyterian Church, Hillsboro Optimist Club, Intel Corporation, and The Right Brain Initiative.