



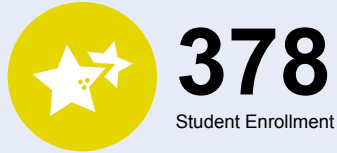
# OREGON AT-A-GLANCE SCHOOL PROFILE

## Paul L Patterson Elementary School

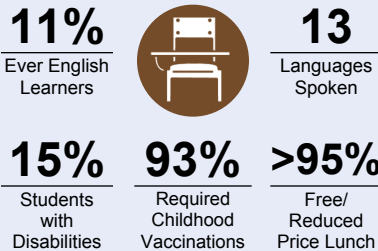
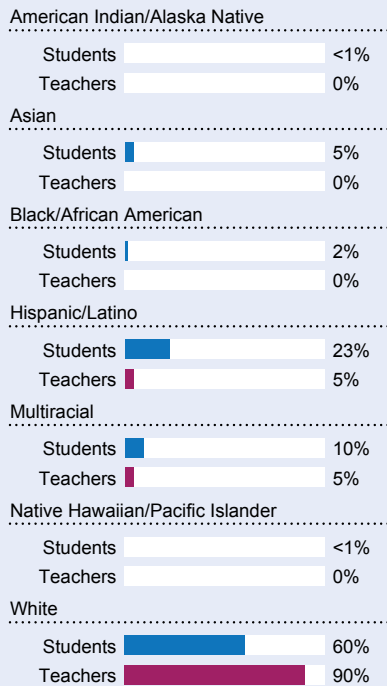
PRINCIPAL: Jamie Lentz | GRADES: K-6 | 261 NE Lenox St, Hillsboro 97124 | 503-844-1380



### Students We Serve



### DEMOGRAPHICS



\*<10 students or data unavailable

### Special Note

The At-A-Glance School and District profiles tell a story about Oregon's schools and districts. The story is harder to tell this year as the COVID-19 pandemic significantly impacted our schools and the data we collect. As a result, statewide assessment and attendance data cannot be compared to prior years and are not shown here. We have included links to our website where you can view the 2020-21 statewide assessment and attendance data and read a detailed description of how these data were impacted. We're thankful for your partnership as we focus on care, connection and the creation of safe, inclusive and supportive learning environments.

### Academic Success

#### ENGLISH LANGUAGE ARTS

Students meeting state grade-level expectations.

For 2020-21 English Language Arts data please visit:

[www.oregon.gov/ode/schools-and-districts/reportcards/reportcards/Pages/Statewide-Assessment-Results-2021.aspx](http://www.oregon.gov/ode/schools-and-districts/reportcards/reportcards/Pages/Statewide-Assessment-Results-2021.aspx)

### School Environment

#### REGULAR ATTENDERS

Students who attended more than 90% of their enrolled school days.

For 2020-21 Regular Attenders data please visit:

[www.oregon.gov/ode/schools-and-districts/reportcards/reportcards/Pages/Regular-Attenders-2021.aspx](http://www.oregon.gov/ode/schools-and-districts/reportcards/reportcards/Pages/Regular-Attenders-2021.aspx)

#### MATHEMATICS

Students meeting state grade-level expectations.

For 2020-21 Mathematics data please visit:

[www.oregon.gov/ode/schools-and-districts/reportcards/reportcards/Pages/Statewide-Assessment-Results-2021.aspx](http://www.oregon.gov/ode/schools-and-districts/reportcards/reportcards/Pages/Statewide-Assessment-Results-2021.aspx)

### Academic Progress

#### INDIVIDUAL STUDENT PROGRESS

Year-to-year progress in English language arts and mathematics.

Data not available in 2020-21

#### SCIENCE

Students meeting state grade-level expectations.

For 2020-21 Science data please visit:

[www.oregon.gov/ode/schools-and-districts/reportcards/reportcards/Pages/Statewide-Assessment-Results-2021.aspx](http://www.oregon.gov/ode/schools-and-districts/reportcards/reportcards/Pages/Statewide-Assessment-Results-2021.aspx)

### School Goals

At Patterson, our goal is to support every student in their academic, social, and emotional growth and learning. Our team provides rigorous, standards-based instruction to meet students at their instructional level. We are committed to an inclusion model of service that fosters peer connections and high expectations for all students. With the shift to Comprehensive Distance Learning and then Hybrid Learning, we prioritized student and family engagement, as well as relationships and connections.

### State Goals

The Oregon Department of Education is partnering with school districts and local communities to ensure a 90% on-time, four year graduation rate by 2025. To progress toward this goal, the state will prioritize efforts to improve attendance, provide a well-rounded education, invest in implementing culturally responsive practices, and promote continuous improvement to close opportunity and achievement gaps for historically and currently underserved students.

### Safe & Welcoming Environment

Creating a safe and welcoming school environment is our top priority. At Patterson our mission is Kids First! We strive to connect and build a relationship with every student. During the 2020-21 school year, we focused on strengthening our multicultural education lessons and increasing the representation of our students in our materials and environment. Representative books were added to each classroom library and utilized through class read-alouds and lessons.



# OREGON AT-A-GLANCE SCHOOL PROFILE CONTINUED

## Paul L Patterson Elementary School



### Outcomes

#### Our Staff (rounded FTE)



18

Teachers



6

Educational assistants



1

Counselors/ Psychologists



89%

Average teacher retention rate



94%

% of licensed teachers with more than 3 years of experience



Yes

Same principal in the last 3 years

	REGULAR ATTENDERS	ENGLISH LANGUAGE ARTS	MATHEMATICS
American Indian/Alaska Native			
Asian			
Black/African American			
Hispanic/Latino			
Multiracial			
Native Hawaiian/Pacific Islander			
White			
Free/Reduced Price Lunch			
Ever English Learner			
Students with Disabilities			
Migrant			
Homeless			
Talented and Gifted			
Female			
Male			
Non-Binary			

### About Our School

#### BULLYING, HARASSMENT, AND SAFETY POLICIES

The safety of our students and staff is a top priority. We have a variety of routines, systems, and supports to keep Patterson students and staff as safe as possible. To learn more, please visit [www.hsd.k12.or.us/keepingstudentsafe](http://www.hsd.k12.or.us/keepingstudentsafe). To learn more about the District's definition and response to bullying and/or harassment, please see Board Policies JFCF and JFCF-AR, as well as the Standards of Student Conduct.

#### EXTRACURRICULAR ACTIVITIES

Students at Patterson have a wide variety of after school club and program opportunities that enrich their school experience. However, due to the impacts of COVID-19 and the pandemic, our team had to think creatively about experiences beyond the classroom. Classroom teachers and our counselor provided 1-1 and small group connection times in the afternoons, our sixth graders had an opportunity to produce digital morning announcements, and all students were invited to attend evening read-alouds with the principal.

#### PARENT ENGAGEMENT

At Patterson, we have an active and highly-supportive Parent Booster Club that provides volunteers in and around our school, and funding for a variety of classroom and school-wide projects through our annual fun run, the Panther Dash. We have a high percentage of parent involvement, including regular weekly volunteering, special event coverage, and field trip support. There are many opportunities for parents to engage with our school community and we encourage all parents to find ways to get involved in our school. During the Pandemic these opportunities were limited, therefore we focused on connections with our parents through virtual parent and principal chats.

#### COMMUNITY ENGAGEMENT

Our Parent Booster Club runs many fun community events, including: Family Carnival and Auction Night, Panther Splash, BINGO Night, and Pastries with a Parent. In addition, we partner with community organizations to enhance our students' educational experience. Champions provides our after-school care and activity program. Head Start is another community partner that provides a preschool program at Patterson. We look forward to the return of these events and similar programs in the 2021-22 school year.