



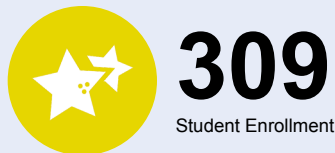
# OREGON AT-A-GLANCE SCHOOL PROFILE

## North Plains Elementary School

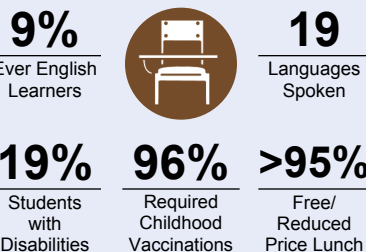
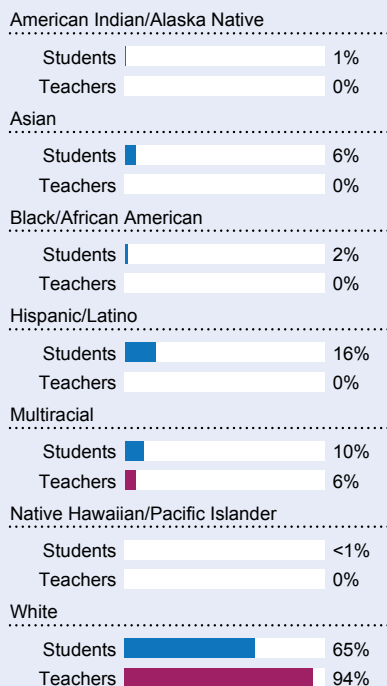


PRINCIPAL: Rebecca Rios | GRADES: K-6 | 32030 NW North Ave, North Plains 97133 | 503-844-1630

### Students We Serve



### DEMOGRAPHICS



\*<10 students or data unavailable

### Special Note

The At-A-Glance School and District profiles tell a story about Oregon's schools and districts. The story is harder to tell this year as the COVID-19 pandemic significantly impacted our schools and the data we collect. As a result, statewide assessment and attendance data cannot be compared to prior years and are not shown here. We have included links to our website where you can view the 2020-21 statewide assessment and attendance data and read a detailed description of how these data were impacted. We're thankful for your partnership as we focus on care, connection and the creation of safe, inclusive and supportive learning environments.

### Academic Success

#### ENGLISH LANGUAGE ARTS

Students meeting state grade-level expectations.

For 2020-21 English Language Arts data please visit:

[www.oregon.gov/ode/schools-and-districts/reportcards/reportcards/Pages/Statewide-Assessment-Results-2021.aspx](http://www.oregon.gov/ode/schools-and-districts/reportcards/reportcards/Pages/Statewide-Assessment-Results-2021.aspx)

### School Environment

#### REGULAR ATTENDERS

Students who attended more than 90% of their enrolled school days.

For 2020-21 Regular Attenders data please visit:

[www.oregon.gov/ode/schools-and-districts/reportcards/reportcards/Pages/Regular-Attenders-2021.aspx](http://www.oregon.gov/ode/schools-and-districts/reportcards/reportcards/Pages/Regular-Attenders-2021.aspx)

#### MATHEMATICS

Students meeting state grade-level expectations.

For 2020-21 Mathematics data please visit:

[www.oregon.gov/ode/schools-and-districts/reportcards/reportcards/Pages/Statewide-Assessment-Results-2021.aspx](http://www.oregon.gov/ode/schools-and-districts/reportcards/reportcards/Pages/Statewide-Assessment-Results-2021.aspx)

### Academic Progress

#### INDIVIDUAL STUDENT PROGRESS

Year-to-year progress in English language arts and mathematics.

Data not available in 2020-21

#### SCIENCE

Students meeting state grade-level expectations.

For 2020-21 Science data please visit:

[www.oregon.gov/ode/schools-and-districts/reportcards/reportcards/Pages/Statewide-Assessment-Results-2021.aspx](http://www.oregon.gov/ode/schools-and-districts/reportcards/reportcards/Pages/Statewide-Assessment-Results-2021.aspx)

### School Goals

Despite the challenges of the pandemic, we are excited to have a more typical school year. More than ever, we have focused on making sure all students feel welcomed and valued. Our stance is based on meeting each child where he/she/they are at in order to stretch and maintain growth. Knowing every student by name, strength, and need is our ultimate action step. With this in mind, we craft thoughtful experiences to mold the whole child- mind, body, and heart.

### State Goals

The Oregon Department of Education is partnering with school districts and local communities to ensure a 90% on-time, four year graduation rate by 2025. To progress toward this goal, the state will prioritize efforts to improve attendance, provide a well-rounded education, invest in implementing culturally responsive practices, and promote continuous improvement to close opportunity and achievement gaps for historically and currently underserved students.

### Safe & Welcoming Environment

At North Plains Elementary School, students are known by name, strength, and need. Staff members aim to start students' day in a positive manner by greeting them as they enter the building and the classroom, and teachers hold a morning meeting with their class in order to create strong relationships and practice positive social interactions. Our student-centered routines and activities, and inclusion of student voice propel our larger community to be incredibly involved and supportive.



# OREGON AT-A-GLANCE SCHOOL PROFILE CONTINUED

## North Plains Elementary School



### Outcomes

#### Our Staff (rounded FTE)



**16**

Teachers



**9**

Educational assistants



**<1**

Counselors/ Psychologists



**79%**

Average teacher retention rate



**88%**

% of licensed teachers with more than 3 years of experience



**Yes**

Same principal in the last 3 years

	REGULAR ATTENDERS	ENGLISH LANGUAGE ARTS	MATHEMATICS
American Indian/Alaska Native			
Asian			
Black/African American			
Hispanic/Latino			
Multiracial			
Native Hawaiian/Pacific Islander			
White			
Free/Reduced Price Lunch			
Ever English Learner			
Students with Disabilities			
Migrant			
Homeless			
Talented and Gifted			
Female			
Male			
Non-Binary			

### About Our School

#### BULLYING, HARASSMENT, AND SAFETY POLICIES

We have a no-bullying policy here at North Plains Elementary. We believe in restorative practices and collaborative problem solving. School-wide positive reinforcement and reteach systems are in place. Students are taught expected behaviors for each area of the building, as well as expectations for unstructured areas like assemblies and recess. The school counselor delivers lessons in every classroom, helping students learn strategies for dealing with conflict and interacting in a positive way with peers. We continue to implement a Social and Emotional Learning curriculum called Sanford Harmony. All classes begin with a morning meeting to support students' feeling of community and belonging in the school.

#### EXTRACURRICULAR ACTIVITIES

Students at North Plains have an opportunity to participate in a variety of after-school activities, including: band, garden club, and chess. Our STEAM coordinator is always looking for additional resources to serve our students as well! Past offerings have included Lego robotics and coding.

#### PARENT ENGAGEMENT

The North Plains Parent Teacher Organization (PTO) is very active and provides a variety of school activities throughout the year. Our goal is to involve as many students and families as possible. We promote a Fun'd Run every fall and at least two other formal community events over the course of the year. Creating a sense of belonging and a celebration of diversity are the drivers for every informal and formal connection opportunity.

#### COMMUNITY ENGAGEMENT

The North Plains community is very supportive. We have generations still active in our area and/or continuing to give back to the school. Students take walking tours of our local police department, fire department and library. Members of these community organizations often attend our evening events and sometimes even visit during the school day. Local traditions like the Garlic Festival and parade pull our community together. With the expansion of residential additions, our community continues to embrace change and preserve a tight-knit feel.