

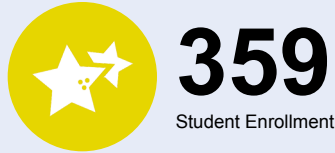


OREGON AT-A-GLANCE SCHOOL PROFILE
Minter Bridge Elementary School

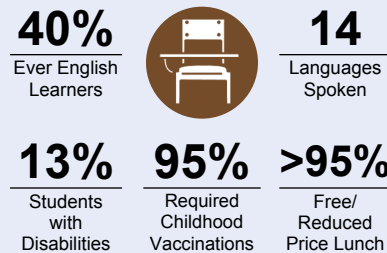
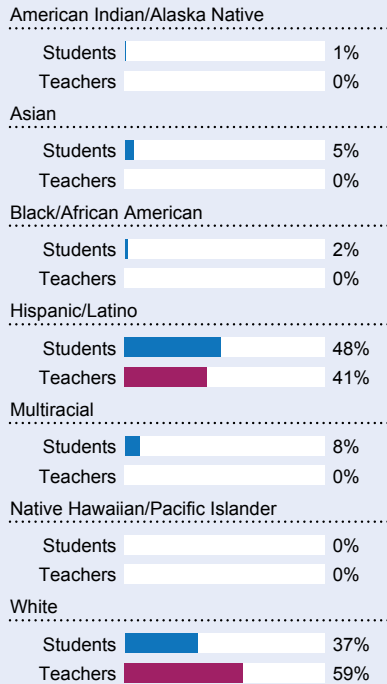
PRINCIPAL: Martha Rodriguez | GRADES: K-6 | 1750 SE Jacquelin Dr, Hillsboro 97123 | 503-844-1650



Students We Serve



DEMOGRAPHICS



\*<10 students or data unavailable

Special Note

The At-A-Glance School and District profiles tell a story about Oregon's schools and districts. The story is harder to tell this year as the COVID-19 pandemic significantly impacted our schools and the data we collect...

Academic Success

ENGLISH LANGUAGE ARTS

Students meeting state grade-level expectations.

For 2020-21 English Language Arts data please visit:

www.oregon.gov/ode/schools-and-districts/reportcards/reportcards/Pages/Statewide-Assessment-Results-2021.aspx

School Environment

REGULAR ATTENDERS

Students who attended more than 90% of their enrolled school days.

For 2020-21 Regular Attenders data please visit:

www.oregon.gov/ode/schools-and-districts/reportcards/reportcards/Pages/Regular-Attenders-2021.aspx

MATHEMATICS

Students meeting state grade-level expectations.

For 2020-21 Mathematics data please visit:

www.oregon.gov/ode/schools-and-districts/reportcards/reportcards/Pages/Statewide-Assessment-Results-2021.aspx

Academic Progress

INDIVIDUAL STUDENT PROGRESS

Year-to-year progress in English language arts and mathematics.

Data not available in 2020-21

SCIENCE

Students meeting state grade-level expectations.

For 2020-21 Science data please visit:

www.oregon.gov/ode/schools-and-districts/reportcards/reportcards/Pages/Statewide-Assessment-Results-2021.aspx

School Goals

In 2020-21, we focused on rigorous math instruction and discourse, building strong foundational skills in language arts, and providing interventions and enrichment opportunities as needed...

State Goals

The Oregon Department of Education is partnering with school districts and local communities to ensure a 90% on-time, four year graduation rate by 2025. To progress toward this goal, the state will prioritize efforts to improve attendance...

Safe & Welcoming Environment

Minter Bridge recognizes diversity and the value of all individuals. We are committed to both educating and providing a safe, inclusive space for all, regardless of their race, color, religion, immigration status, or any other basis.



# OREGON AT-A-GLANCE SCHOOL PROFILE CONTINUED

## Minter Bridge Elementary School



### Outcomes

#### Our Staff (rounded FTE)



**20**  
Teachers



**8**  
Educational assistants



**1**  
Counselors/  
Psychologists



**76%**  
Average teacher retention rate



**70%**  
% of licensed teachers with more than 3 years of experience



**No**  
Same principal in the last 3 years

	REGULAR ATTENDERS	ENGLISH LANGUAGE ARTS	MATHEMATICS
American Indian/Alaska Native			
Asian			
Black/African American			
Hispanic/Latino			
Multiracial			
Native Hawaiian/Pacific Islander			
White			
Free/Reduced Price Lunch			
Ever English Learner			
Students with Disabilities			
Migrant			
Homeless			
Talented and Gifted			
Female			
Male			
Non-Binary			

#### About Our School

##### BULLYING, HARASSMENT, AND SAFETY POLICIES

Our number one priority and goal is to ensure students are safe. To that end, we have a network of adults, systems, structures, protocols, and other supports we leverage to keep our school as safe as possible. To learn more, please visit [www.hsd.k12.or.us/keepingstudentsafe](http://www.hsd.k12.or.us/keepingstudentsafe). Ensuring safety also means that positive, respectful, and responsible behavior is expected at all times. We do not tolerate bullying or harassment. To learn more about the District's definition and response to bullying and/or harassment, please see Board Policies JFCF and JFCF-AR: Hazing, Harassment and Bullying, as well as the Standards of Student Conduct.

##### EXTRACURRICULAR ACTIVITIES

We offer Band, Chess Club, Family Fun Nights, Champions Care, Student Leadership Team, STEAM Club, and events organized by our Parent Teacher Association.

##### PARENT ENGAGEMENT

Parents know their children best, and we welcome parents as partners in their child's education. Please join us in the following activities: Back-to-School Meet and Greet, Career Fair, ParentVUE, Parent-Teacher conferences, Family Science Fair Night, Chat with the Principal, Dolphin Dash, and PTA.

##### COMMUNITY ENGAGEMENT

Examples of our community engagement include: Career Fair, Intel Volunteers, and Backpack Projects.