



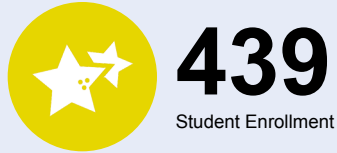
# OREGON AT-A-GLANCE SCHOOL PROFILE

## W Verne McKinney Elementary School

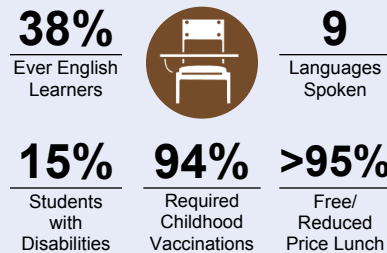
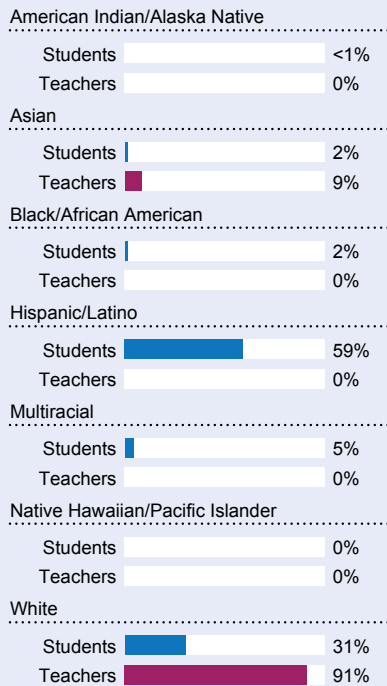
PRINCIPAL: Tristin Burnett | GRADES: K-6 | 535 NW Darnielle St, Hillsboro 97124 | 503-844-1660



### Students We Serve



### DEMOGRAPHICS



\*<10 students or data unavailable

### Special Note

The At-A-Glance School and District profiles tell a story about Oregon's schools and districts. The story is harder to tell this year as the COVID-19 pandemic significantly impacted our schools and the data we collect. As a result, statewide assessment and attendance data cannot be compared to prior years and are not shown here. We have included links to our website where you can view the 2020-21 statewide assessment and attendance data and read a detailed description of how these data were impacted. We're thankful for your partnership as we focus on care, connection and the creation of safe, inclusive and supportive learning environments.

### Academic Success

#### ENGLISH LANGUAGE ARTS

Students meeting state grade-level expectations.

**For 2020-21 English Language Arts data please visit:**

[www.oregon.gov/ode/schools-and-districts/reportcards/reportcards/Pages/Statewide-Assessment-Results-2021.aspx](http://www.oregon.gov/ode/schools-and-districts/reportcards/reportcards/Pages/Statewide-Assessment-Results-2021.aspx)

### School Environment

#### REGULAR ATTENDERS

Students who attended more than 90% of their enrolled school days.

**For 2020-21 Regular Attenders data please visit:**

[www.oregon.gov/ode/schools-and-districts/reportcards/reportcards/Pages/Regular-Attenders-2021.aspx](http://www.oregon.gov/ode/schools-and-districts/reportcards/reportcards/Pages/Regular-Attenders-2021.aspx)

#### MATHEMATICS

Students meeting state grade-level expectations.

**For 2020-21 Mathematics data please visit:**

[www.oregon.gov/ode/schools-and-districts/reportcards/reportcards/Pages/Statewide-Assessment-Results-2021.aspx](http://www.oregon.gov/ode/schools-and-districts/reportcards/reportcards/Pages/Statewide-Assessment-Results-2021.aspx)

### Academic Progress

#### INDIVIDUAL STUDENT PROGRESS

Year-to-year progress in English language arts and mathematics.

**Data not available in 2020-21**

#### SCIENCE

Students meeting state grade-level expectations.

**For 2020-21 Science data please visit:**

[www.oregon.gov/ode/schools-and-districts/reportcards/reportcards/Pages/Statewide-Assessment-Results-2021.aspx](http://www.oregon.gov/ode/schools-and-districts/reportcards/reportcards/Pages/Statewide-Assessment-Results-2021.aspx)

### School Goals

McKinney Elementary strives to increase student achievement through providing real-world learning opportunities with STEM projects and activities, improve math scores with a focus on the eight practices of mathematical thinking, and increase students' access to language scaffolds to support reading, writing and speaking. McKinney focuses on social-emotional learning by teaching the Zones of Regulation, wellness, and self-regulation strategies. We also strive to improve communication with families, increase our attendance rates, and encourage parent involvement through our PTO and PAC.

### State Goals

The Oregon Department of Education is partnering with school districts and local communities to ensure a 90% on-time, four year graduation rate by 2025. To progress toward this goal, the state will prioritize efforts to improve attendance, provide a well-rounded education, invest in implementing culturally responsive practices, and promote continuous improvement to close opportunity and achievement gaps for historically and currently underserved students.

### Safe & Welcoming Environment

McKinney staff members work with students to promote a safe and kind environment. We teach strategies to positively handle frustration and conflict, such as self-regulation techniques and restorative practices. Our school highlights student kindness and positive behavior and we actively communicate our work with families. In addition, our Latino Family Outreach & Community Liaison ensures that our Spanish-speaking families have an equitable voice in our school.



### Outcomes

#### Our Staff (rounded FTE)



**19**

Teachers



**10**

Educational assistants



**1**

Counselors/  
Psychologists



**95%**

Average teacher retention rate



**80%**

% of licensed teachers with more than 3 years of experience



**No**

Same principal in the last 3 years

	REGULAR ATTENDERS	ENGLISH LANGUAGE ARTS	MATHEMATICS
American Indian/Alaska Native			
Asian			
Black/African American			
Hispanic/Latino			
Multiracial			
Native Hawaiian/Pacific Islander			
White			
Free/Reduced Price Lunch			
Ever English Learner			
Students with Disabilities			
Migrant			
Homeless			
Talented and Gifted			
Female			
Male			
Non-Binary			

### About Our School

#### BULLYING, HARASSMENT, AND SAFETY POLICIES

Student safety is our top priority at McKinney. We address this by reviewing rules and expectations regularly; focusing on safe, respectful, responsible, and kind behavior in all areas throughout the school; using restorative justice to resolve incidents; actively teaching problem solving and conflict resolution; maintaining a partnership with Glencoe High School to have student ambassadors teach anti-bullying lessons; utilizing positive reinforcement for expected behaviors; regularly practicing safety drills and reviewing them with staff; and scheduling weekly meetings with our School Resource Officer.

#### EXTRACURRICULAR ACTIVITIES

McKinney has a robust offering of extracurricular opportunities, including: After school Scholars club, Chess club, Adelante Chicas, "What-if?" club, Let's Read Math, Website Design, LEGO Robotics, 4-H Garden Club, Basketball, School Play, Summer STEM learning program, and Kindergarten Bridge.

#### PARENT ENGAGEMENT

We believe that the highest levels of student success come through close collaboration between the school and parents. We promote parent engagement by working closely with our Parent Teacher Organization (PTO) and Parent Advisory Committee (PAC); sending home a monthly newsletter; posting regularly to Facebook and Twitter; sending classroom communication through weekly letters, Seesaw updates, and Remind; encouraging regular parent volunteers; offering additional parent conferences as needed in the spring; and holding Family STEM night, regular ZUMBA events, and family workshops with Adelante Mujeres.

#### COMMUNITY ENGAGEMENT

Much of McKinney's success comes from community partnerships. We have too many to list, but here are some highlights: Qorvo representatives teach STEM education and provide tutoring, local farms bring a harvest of the month for healthy eating, Washington County Library promotes learning in our community, LifeWorks NW helps with mental health services on site, SMART comes twice a week to read with young students, Intel adds to STEM funding, Hillsboro Schools Foundation provides grant funding, Cultural Coalition of Washington County and Oregon Cultural Trust bring more Arts learning, and Schoolhouse Supplies and FirstTech Credit Union provide backpacks and school supplies.