

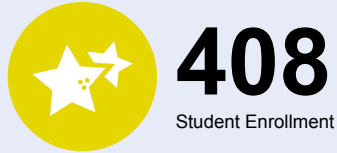


OREGON AT-A-GLANCE SCHOOL PROFILE Lincoln Street Elementary School

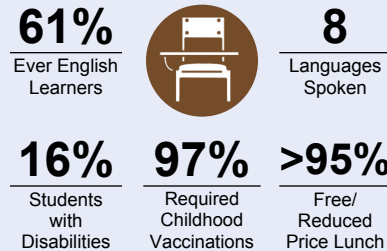
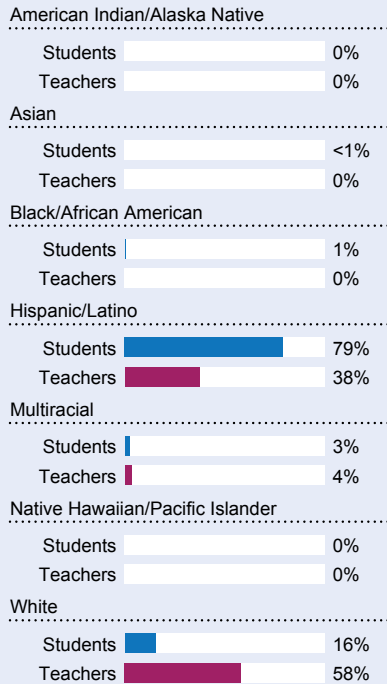
PRINCIPAL: Carmen Brodniak | GRADES: K-6 | 801 NE Lincoln St, Hillsboro 97124 | 503-844-1160



Students We Serve



DEMOGRAPHICS



*<10 students or data unavailable

Special Note

The At-A-Glance School and District profiles tell a story about Oregon's schools and districts. The story is harder to tell this year as the COVID-19 pandemic significantly impacted our schools and the data we collect...

Academic Success

ENGLISH LANGUAGE ARTS

Students meeting state grade-level expectations.

For 2020-21 English Language Arts data please visit:

www.oregon.gov/ode/schools-and-districts/reportcards/reportcards/Pages/Statewide-Assessment-Results-2021.aspx

School Environment

REGULAR ATTENDERS

Students who attended more than 90% of their enrolled school days.

For 2020-21 Regular Attenders data please visit:

www.oregon.gov/ode/schools-and-districts/reportcards/reportcards/Pages/Regular-Attenders-2021.aspx

MATHEMATICS

Students meeting state grade-level expectations.

For 2020-21 Mathematics data please visit:

www.oregon.gov/ode/schools-and-districts/reportcards/reportcards/Pages/Statewide-Assessment-Results-2021.aspx

Academic Progress

INDIVIDUAL STUDENT PROGRESS

Year-to-year progress in English language arts and mathematics.

Data not available in 2020-21

SCIENCE

Students meeting state grade-level expectations.

For 2020-21 Science data please visit:

www.oregon.gov/ode/schools-and-districts/reportcards/reportcards/Pages/Statewide-Assessment-Results-2021.aspx

School Goals

At Lincoln Street, we engage students to be their best in a rich multicultural environment where students are nurtured and challenged to reach their full potential.

State Goals

The Oregon Department of Education is partnering with school districts and local communities to ensure a 90% on-time, four year graduation rate by 2025.

Safe & Welcoming Environment

Our school recognizes the diversity and worth of all students, individuals and groups, and is committed to both educating and providing a safe and inclusive space for everyone.



OREGON AT-A-GLANCE SCHOOL PROFILE CONTINUED

Lincoln Street Elementary School

Outcomes

Our Staff (rounded FTE)



20
Teachers



11
Educational assistants



1
Counselors/
Psychologists



80%
Average teacher retention rate



90%
% of licensed teachers with more than 3 years of experience



Yes
Same principal in the last 3 years

	REGULAR ATTENDERS	ENGLISH LANGUAGE ARTS	MATHEMATICS
American Indian/Alaska Native			
Asian			
Black/African American			
Hispanic/Latino			
Multiracial			
Native Hawaiian/Pacific Islander			
White			
Free/Reduced Price Lunch			
Ever English Learner			
Students with Disabilities			
Migrant			
Homeless			
Talented and Gifted			
Female			
Male			
Non-Binary			

About Our School

BULLYING, HARASSMENT, AND SAFETY POLICIES

Our number one priority and goal is to ensure students are safe. To that end, we have a network of adults, systems, structures, protocols, and other supports we leverage to keep our school as safe as possible. To learn more, please visit www.hsd.k12.or.us/keepingstudentsSAFE. Ensuring safety also means that positive, respectful, and responsible behavior is expected at all times. We do not tolerate bullying or harassment. To learn more about the District's definition and response to bullying and/or harassment, please see Board Policies JFCF and JFCF-AR: Hazing, Harassment and Bullying, as well as the Standards of Student Conduct.

EXTRACURRICULAR ACTIVITIES

Our goal is to provide as many opportunities as possible for students to access extracurricular activities. We offer Lynx Academy (language arts and math interventions), Sports (track), Garden Club, STEAM, Band, Violin, and Adelante Chicas.

PARENT ENGAGEMENT

We know that parents are the first and most important educators in a student's life. Parent collaboration with classroom teachers and the school is crucial to preparing our students for a successful year. We provide monthly parent evening events that promote community building. We also provide information/resources based on feedback from parent surveys as well as from our Parent Community Group and Parent Advisory Committee. We promote parental engagement by working closely with both of our parent groups, through our classroom and school-wide parent newsletters, and through our school website.

COMMUNITY ENGAGEMENT

Our partnership with outside agencies has been key to our success in building a strong community of support for students and their families. Some of these partnerships include: First United Methodist Church - supports our Harvest Share program; Western Psychological Services and Pacific University - provide counseling services; and Intel and the Church of Latter Day Saints - supply volunteers to support both classroom and other school volunteer needs.