



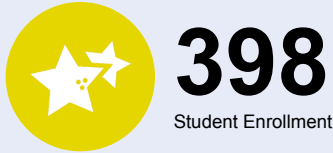
OREGON AT-A-GLANCE SCHOOL PROFILE

Ladd Acres Elementary School

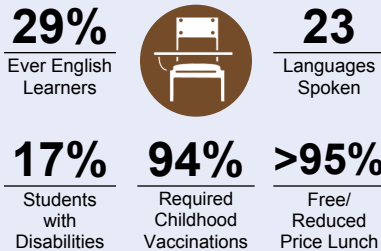
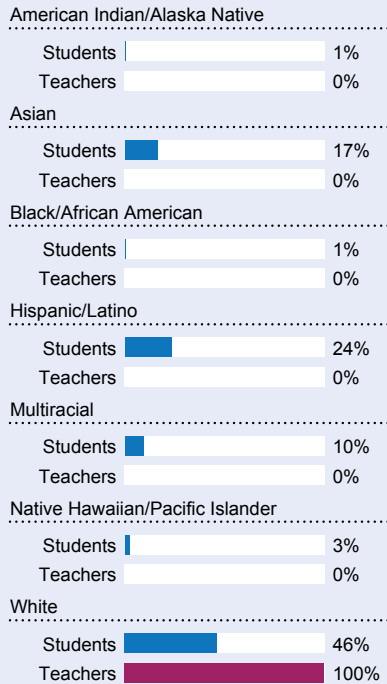
2020-21

PRINCIPAL: Jennifer Robbins | GRADES: K-6 | 2425 SW Cornelius Pass Rd, Hillsboro 97123 | 503-844-1300

Students We Serve



DEMOGRAPHICS



*<10 students or data unavailable

Special Note

The At-A-Glance School and District profiles tell a story about Oregon's schools and districts. The story is harder to tell this year as the COVID-19 pandemic significantly impacted our schools and the data we collect. As a result, statewide assessment and attendance data cannot be compared to prior years and are not shown here. We have included links to our website where you can view the 2020-21 statewide assessment and attendance data and read a detailed description of how these data were impacted. We're thankful for your partnership as we focus on care, connection and the creation of safe, inclusive and supportive learning environments.

Academic Success

ENGLISH LANGUAGE ARTS

Students meeting state grade-level expectations.

For 2020-21 English Language Arts data please visit:

www.oregon.gov/ode/schools-and-districts/reportcards/reportcards/Pages/Statewide-Assessment-Results-2021.aspx

School Environment

REGULAR ATTENDERS

Students who attended more than 90% of their enrolled school days.

For 2020-21 Regular Attenders data please visit:

www.oregon.gov/ode/schools-and-districts/reportcards/reportcards/Pages/Regular-Attenders-2021.aspx

MATHEMATICS

Students meeting state grade-level expectations.

For 2020-21 Mathematics data please visit:

www.oregon.gov/ode/schools-and-districts/reportcards/reportcards/Pages/Statewide-Assessment-Results-2021.aspx

Academic Progress

INDIVIDUAL STUDENT PROGRESS

Year-to-year progress in English language arts and mathematics.

Data not available in 2020-21

SCIENCE

Students meeting state grade-level expectations.

For 2020-21 Science data please visit:

www.oregon.gov/ode/schools-and-districts/reportcards/reportcards/Pages/Statewide-Assessment-Results-2021.aspx

School Goals

At Ladd Acres, we collaborate to meet the needs of all students. It is our goal to have all students reach their highest academic and social potential. We carefully monitor student growth in the areas of reading and math through the use of timely assessments. We create welcoming and engaging learning environments together with our students. Students learn self-regulation strategies as a part of our social-emotional learning curriculum. We promote the importance of regular attendance so that students can maximize their learning time. We want all of our students to dream big, reach for the stars, and achieve success!

State Goals

The Oregon Department of Education is partnering with school districts and local communities to ensure a 90% on-time, four year graduation rate by 2025. To progress toward this goal, the state will prioritize efforts to improve attendance, provide a well-rounded education, invest in implementing culturally responsive practices, and promote continuous improvement to close opportunity and achievement gaps for historically and currently underserved students.

Safe & Welcoming Environment

We recognize the diversity and worth of all students, individuals and groups, and are committed to both educating and providing a safe and inclusive space for everyone, regardless of their race, color, religion, immigration status, or any other basis. We believe that students learn best when they feel safe and valued. Our staff is skilled, caring, and dedicated to fostering each student's academic and personal growth in a supportive and welcoming environment.



Outcomes

Our Staff (rounded FTE)



18

Teachers



5

Educational
assistants



1

Counselors/
Psychologists



91%

Average teacher
retention rate



95%

% of licensed teachers
with more than 3 years
of experience



No

Same principal in
the last 3 years

	REGULAR ATTENDERS	ENGLISH LANGUAGE ARTS	MATHEMATICS
American Indian/Alaska Native			
Asian			
Black/African American			
Hispanic/Latino			
Multiracial			
Native Hawaiian/Pacific Islander			
White			
Free/Reduced Price Lunch			
Ever English Learner			
Students with Disabilities			
Migrant			
Homeless			
Talented and Gifted			
Female			
Male			
Non-Binary			

About Our School

BULLYING, HARASSMENT, AND SAFETY POLICIES

Our number one priority and goal is to ensure students are safe. To that end, we have a network of adults, systems, structures, protocols, and other supports we leverage to keep our school as safe as possible. To learn more, please visit www.hsd.k12.or.us/keepingstudentsafe. Ensuring safety also means that positive, respectful, and responsible behavior is expected at all times. We do not tolerate bullying or harassment. To learn more about the District's definition and response to bullying and/or harassment, please see Board Policies JFCF and JFCF-AR: Hazing, Harassment and Bullying, as well as the Standards of Student Conduct.

EXTRACURRICULAR ACTIVITIES

We look forward to a time when we can offer our full menu of after school activities. Please watch our newsletter and website for updates.

PARENT ENGAGEMENT

Parent engagement is encouraged and embraced at Ladd Acres. Our PTA serves the school in a variety of ways, including providing funding to support technology, arts, physical activity and evening family events. Monthly PTA meetings provide families with an opportunity for input and communication. We also have a parent partnership/site council team that meets quarterly to focus on school needs in the areas of academics and social-emotional well-being.

COMMUNITY ENGAGEMENT

At Ladd Acres, we offer the following engagement events and provide all stakeholders with the opportunity for input and partnership: Good Neighbor Project partnership; Century HS STARS program (high school students provide curriculum to elementary school students); Brown MS Leadership partnership; local business partnerships for class visits and career festival; Intel support; Elks - holiday supports for families; Red Tricycle Brigade fundraiser; College and Career Day; Fun Run in the fall; and family events such as Movie Night, Carnival, Dances, and STEAM Night.