



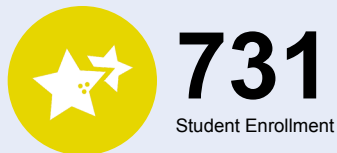
# OREGON AT-A-GLANCE SCHOOL PROFILE

## Evergreen Jr High School

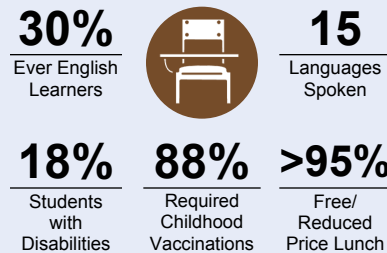
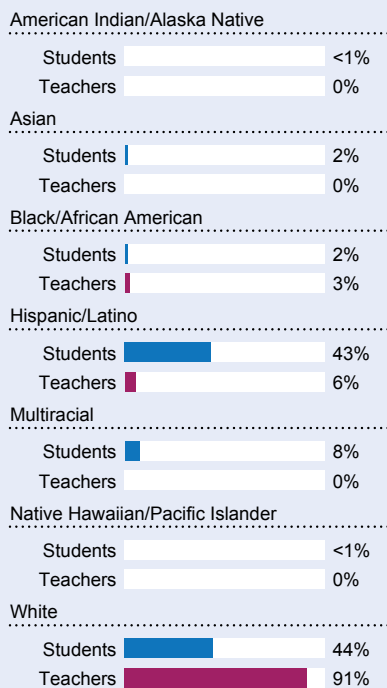


PRINCIPAL: O.J. Gulley | GRADES: 7-8 | 29850 NW Evergreen Rd, Hillsboro 97124 | 503-844-1400

### Students We Serve



### DEMOGRAPHICS



\*<10 students or data unavailable

### Special Note

The At-A-Glance School and District profiles tell a story about Oregon's schools and districts. The story is harder to tell this year as the COVID-19 pandemic significantly impacted our schools and the data we collect. As a result, statewide assessment and attendance data cannot be compared to prior years and are not shown here. We have included links to our website where you can view the 2020-21 statewide assessment and attendance data and read a detailed description of how these data were impacted. We're thankful for your partnership as we focus on care, connection and the creation of safe, inclusive and supportive learning environments.

### Academic Success

#### ENGLISH LANGUAGE ARTS

Students meeting state grade-level expectations.

For 2020-21 English Language Arts data please visit:

[www.oregon.gov/ode/schools-and-districts/reportcards/reportcards/Pages/Statewide-Assessment-Results-2021.aspx](http://www.oregon.gov/ode/schools-and-districts/reportcards/reportcards/Pages/Statewide-Assessment-Results-2021.aspx)

### School Environment

#### REGULAR ATTENDERS

Students who attended more than 90% of their enrolled school days.

For 2020-21 Regular Attenders data please visit:

[www.oregon.gov/ode/schools-and-districts/reportcards/reportcards/Pages/Regular-Attenders-2021.aspx](http://www.oregon.gov/ode/schools-and-districts/reportcards/reportcards/Pages/Regular-Attenders-2021.aspx)

#### MATHEMATICS

Students meeting state grade-level expectations.

For 2020-21 Mathematics data please visit:

[www.oregon.gov/ode/schools-and-districts/reportcards/reportcards/Pages/Statewide-Assessment-Results-2021.aspx](http://www.oregon.gov/ode/schools-and-districts/reportcards/reportcards/Pages/Statewide-Assessment-Results-2021.aspx)

### Academic Progress

#### INDIVIDUAL STUDENT PROGRESS

Year-to-year progress in English language arts and mathematics.

Data not available in 2020-21

#### SCIENCE

Students meeting state grade-level expectations.

For 2020-21 Science data please visit:

[www.oregon.gov/ode/schools-and-districts/reportcards/reportcards/Pages/Statewide-Assessment-Results-2021.aspx](http://www.oregon.gov/ode/schools-and-districts/reportcards/reportcards/Pages/Statewide-Assessment-Results-2021.aspx)

### School Goals

Academic Goals: 1) With the implementation of a 7-period day and the addition of Math and ELA intervention classes, students will show an increase in academic growth by raising their reading and Math skills to grade level benchmark; 2) With a focus on WICOR, there will be a 40% decrease in Ds and Fs earned; 3) With staff language training and PD around strength based conversations, we will increase student reports of feeling known by name strength and need to 90%; and 4) With career-related learning opportunities, 80% of students taking the CIA class will increase their knowledge of career and college pathway opportunities.

### State Goals

The Oregon Department of Education is partnering with school districts and local communities to ensure a 90% on-time, four year graduation rate by 2025. To progress toward this goal, the state will prioritize efforts to improve attendance, provide a well-rounded education, invest in implementing culturally responsive practices, and promote continuous improvement to close opportunity and achievement gaps for historically and currently underserved students.

### Safe & Welcoming Environment

We recognize the diversity and worth of all students, individuals and groups, and are committed to both educating and providing a safe and inclusive space for everyone, regardless of their race, color, religion, immigration status, or any other basis. We believe that students learn best when they feel safe and valued. Our staff is skilled, caring, and dedicated to fostering each student's academic and personal growth in a supportive and welcoming environment.



### Outcomes

#### Our Staff (rounded FTE)



**30**

Teachers



**13**

Educational assistants



**3**

Counselors/  
Psychologists



**85%**

Average teacher retention rate



**93%**

% of licensed teachers with more than 3 years of experience



**Yes**

Same principal in the last 3 years

	REGULAR ATTENDERS	ENGLISH LANGUAGE ARTS	MATHEMATICS
American Indian/Alaska Native			
Asian			
Black/African American			
Hispanic/Latino			
Multiracial			
Native Hawaiian/Pacific Islander			
White			
Free/Reduced Price Lunch			
Ever English Learner			
Students with Disabilities			
Migrant			
Homeless			
Talented and Gifted			
Female			
Male			
Non-Binary			

#### About Our School

##### BULLYING, HARASSMENT, AND SAFETY POLICIES

Our number one priority and goal is to ensure that students are safe. To that end, we have a network of adults, systems, structures, protocols, and other supports we leverage to keep our school as safe as possible. To learn more, please visit [www.hsd.k12.or.us/keepingstudentsafe](http://www.hsd.k12.or.us/keepingstudentsafe). Ensuring safety also means that positive, respectful, and responsible behavior is expected at all times. We do not tolerate bullying or harassment. To learn more about the District's definition and response to bullying and/or harassment, please see Board Policies JFCF and JFCF-AR: Hazing, Harassment and Bullying, as well as the Standards of Student Conduct.

##### EXTRACURRICULAR ACTIVITIES

Evergreen offers a number of extracurricular activities, including both academic and athletic opportunities: Volleyball, Soccer, Basketball, Wrestling, Track and Field, Chicas, FCS, Chess Club, Speech and Debate, Robotics, Video gaming, Dance Team, Jazz Band, Mariachi, Homework Club, Migrant Support Club, STEM Club, Leadership, Yearbook, and Equity Club.

##### PARENT ENGAGEMENT

Evergreen holds several evening events for parents, beginning with our annual Back-to-School Night in the early fall. Parent Conferences, Spanish-speaking Family Nights, 6th grade Parent Night, 8th Grade Promotion, and many other band, choir, and drama performance events all play a major role in our parent engagement. In addition, a newsletter goes out at the beginning of each week to keep parents informed about what's happening at our school. Evergreen's Parent Club also holds a meeting at the school once each month where the principal and other key stakeholders attend and present on various topics relating to the school and our students.

##### COMMUNITY ENGAGEMENT

Evergreen partners with local businesses and organizations such as Intel, Nike, Dick's Mackenzie Ford, local Food Truck organizations, the Hillsboro Chamber of Commerce, the Hillsboro Police Department, and others to provide our students with real world experiences in several career and technical fields. Experiences range from hosting guest speakers to students spending valuable time on-site learning about careers firsthand. In addition, many volunteers help out at Evergreen both daily and weekly in classrooms and throughout our school.