



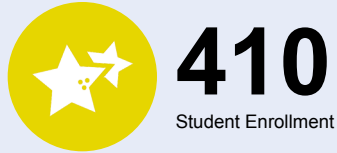
OREGON AT-A-GLANCE SCHOOL PROFILE

Eastwood Elementary School

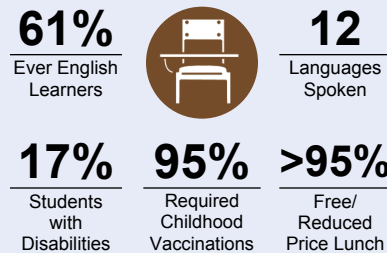
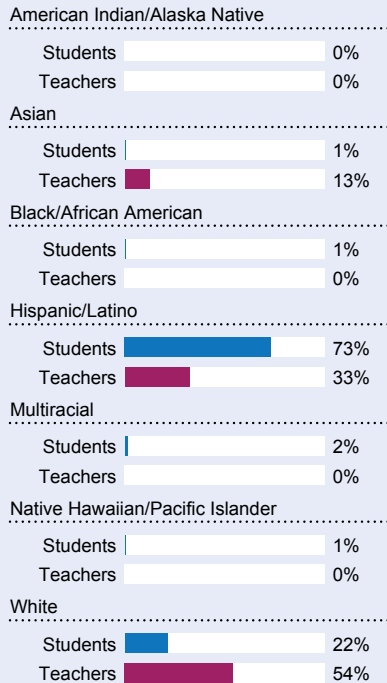
2020-21

PRINCIPAL: Lindsay Garcia | GRADES: K-6 | 2100 NE Lincoln St, Hillsboro 97124 | 503-844-1725

Students We Serve



DEMOGRAPHICS



*<10 students or data unavailable

Special Note

The At-A-Glance School and District profiles tell a story about Oregon's schools and districts. The story is harder to tell this year as the COVID-19 pandemic significantly impacted our schools and the data we collect. As a result, statewide assessment and attendance data cannot be compared to prior years and are not shown here. We have included links to our website where you can view the 2020-21 statewide assessment and attendance data and read a detailed description of how these data were impacted. We're thankful for your partnership as we focus on care, connection and the creation of safe, inclusive and supportive learning environments.

Academic Success

ENGLISH LANGUAGE ARTS

Students meeting state grade-level expectations.

For 2020-21 English Language Arts data please visit:

www.oregon.gov/ode/schools-and-districts/reportcards/reportcards/Pages/Statewide-Assessment-Results-2021.aspx

School Environment

REGULAR ATTENDERS

Students who attended more than 90% of their enrolled school days.

For 2020-21 Regular Attenders data please visit:

www.oregon.gov/ode/schools-and-districts/reportcards/reportcards/Pages/Regular-Attenders-2021.aspx

MATHEMATICS

Students meeting state grade-level expectations.

For 2020-21 Mathematics data please visit:

www.oregon.gov/ode/schools-and-districts/reportcards/reportcards/Pages/Statewide-Assessment-Results-2021.aspx

Academic Progress

INDIVIDUAL STUDENT PROGRESS

Year-to-year progress in English language arts and mathematics.

Data not available in 2020-21

SCIENCE

Students meeting state grade-level expectations.

For 2020-21 Science data please visit:

www.oregon.gov/ode/schools-and-districts/reportcards/reportcards/Pages/Statewide-Assessment-Results-2021.aspx

School Goals

"Developing compassionate global scholars who persevere and achieve at high levels." Eastwood provides a safe and caring environment where students learn self regulation and problem-solving skills to help them access their learning. We meet the needs of all students through differentiation, so students can receive the instruction at their level - specifically in reading and math. We utilize professional learning communities to inform our instruction and develop appropriate intervention and enrichment experiences.

State Goals

The Oregon Department of Education is partnering with school districts and local communities to ensure a 90% on-time, four year graduation rate by 2025. To progress toward this goal, the state will prioritize efforts to improve attendance, provide a well-rounded education, invest in implementing culturally responsive practices, and promote continuous improvement to close opportunity and achievement gaps for historically and currently underserved students.

Safe & Welcoming Environment

We recognize the diversity and worth of all students, individuals and groups, and are committed to both educating and providing a safe and inclusive space for everyone, regardless of their race, color, religion, immigration status, or any other basis. We believe that students learn best when they feel safe and valued. Our staff is skilled, caring, and dedicated to fostering each student's academic and personal growth in a supportive and welcoming environment. We are working on getting student and parent voices to hear what is needed to better support our community.



OREGON AT-A-GLANCE SCHOOL PROFILE CONTINUED

Eastwood Elementary School



Outcomes

Our Staff (rounded FTE)



22

Teachers



9

Educational assistants



1

Counselors/
Psychologists



81%

Average teacher retention rate



77%

% of licensed teachers with more than 3 years of experience



Yes

Same principal in the last 3 years

	REGULAR ATTENDERS	ENGLISH LANGUAGE ARTS	MATHEMATICS
American Indian/Alaska Native			
Asian			
Black/African American			
Hispanic/Latino			
Multiracial			
Native Hawaiian/Pacific Islander			
White			
Free/Reduced Price Lunch			
Ever English Learner			
Students with Disabilities			
Migrant			
Homeless			
Talented and Gifted			
Female			
Male			
Non-Binary			

About Our School

BULLYING, HARASSMENT, AND SAFETY POLICIES

Our number one priority and goal is to ensure students are safe. To that end, we have a network of adults, systems, structures, protocols, and other supports we leverage to keep our school as safe as possible. To learn more, please visit www.hsd.k12.or.us/keepingstudentsafe. Ensuring safety also means that positive, respectful, and responsible behavior is expected at all times. We do not tolerate bullying or harassment. To learn more about the District's definition and response to bullying and/or harassment, please see Board Policies JFCF and JFCF-AR: Hazing, Harassment and Bullying, as well as the Standards of Student Conduct.

EXTRACURRICULAR ACTIVITIES

Eastwood provides a variety of extracurricular activities to support our students: 6th Grade Band, Choir Club, Chess Club, Math and Writing Club, Chicas Club, Dance Club, Exercise Club, Track, Art Club, STEAM Club, and Leadership.

PARENT ENGAGEMENT

Parent engagement is a priority at Eastwood. We believe that all families should have a voice in our school and partner with us. We have dedicated parent groups, PAC (Parent Advisory Committee) and PTA (Parent Teacher Association), that work together to support our students. Some of the opportunities we have for parents to engage in the school are: Parent/Teacher Conferences; parent newsletter, website and social media; monthly Coffee with the Principal; PTA monthly meetings; PAC monthly meetings; family evening events sponsored by our parent groups; Science Fair, International Writing and Celebration of Learning Nights; and volunteer opportunities in the school when available.

COMMUNITY ENGAGEMENT

Eastwood partners with a variety of businesses and community organizations in order to support the needs of our families and students. With community support, we are able to provide these programs: Weekly Backpack Food Program, school supply donations, on-site counseling with Lifeworks, clothing drive, snack donation, Community Greeters program, Community Readers program, and Beautification Committee.