



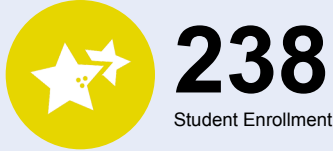
OREGON AT-A-GLANCE SCHOOL PROFILE

City View Charter School

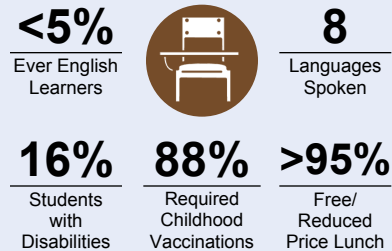
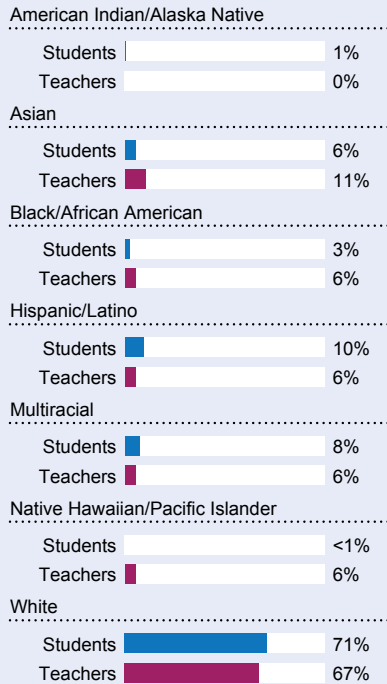
2020-21

PRINCIPAL: Nicole Kopacz | GRADES: K-8 | 4174 SE Bentley St, Hillsboro 97123 | 503-844-9424

Students We Serve



DEMOGRAPHICS



*<10 students or data unavailable

Special Note

The At-A-Glance School and District profiles tell a story about Oregon's schools and districts. The story is harder to tell this year as the COVID-19 pandemic significantly impacted our schools and the data we collect. As a result, statewide assessment and attendance data cannot be compared to prior years and are not shown here. We have included links to our website where you can view the 2020-21 statewide assessment and attendance data and read a detailed description of how these data were impacted. We're thankful for your partnership as we focus on care, connection and the creation of safe, inclusive and supportive learning environments.

Academic Success

ENGLISH LANGUAGE ARTS

Students meeting state grade-level expectations.

For 2020-21 English Language Arts data please visit:

www.oregon.gov/ode/schools-and-districts/reportcards/reportcards/Pages/Statewide-Assessment-Results-2021.aspx

School Environment

REGULAR ATTENDERS

Students who attended more than 90% of their enrolled school days.

For 2020-21 Regular Attenders data please visit:

www.oregon.gov/ode/schools-and-districts/reportcards/reportcards/Pages/Regular-Attenders-2021.aspx

MATHEMATICS

Students meeting state grade-level expectations.

For 2020-21 Mathematics data please visit:

www.oregon.gov/ode/schools-and-districts/reportcards/reportcards/Pages/Statewide-Assessment-Results-2021.aspx

Academic Progress

INDIVIDUAL STUDENT PROGRESS

Year-to-year progress in English language arts and mathematics.

Data not available in 2020-21

SCIENCE

Students meeting state grade-level expectations.

For 2020-21 Science data please visit:

www.oregon.gov/ode/schools-and-districts/reportcards/reportcards/Pages/Statewide-Assessment-Results-2021.aspx

School Goals

In the 2020-21 school year, we focused on academic goals for differentiated rigor and student support in math and literacy using MAPs benchmark assessments, attendance and student belonging. School-wide initiatives focused on implementing software for virtual learning, student social-emotional well-being and engagement in class and assignments. Differentiated small group instruction was prioritized both in-person and virtually. Students celebrated their academic achievements virtually during our EL Night Celebration.

State Goals

The Oregon Department of Education is partnering with school districts and local communities to ensure a 90% on-time, four year graduation rate by 2025. To progress toward this goal, the state will prioritize efforts to improve attendance, provide a well-rounded education, invest in implementing culturally responsive practices, and promote continuous improvement to close opportunity and achievement gaps for historically and currently underserved students.

Safe & Welcoming Environment

As a small community, we recognize the diversity and worth of all students. We are committed to providing a safe and inclusive space for everyone, regardless of their race, color, religion, language, immigration status, ability or any other basis. We believe students learn best when they are safe and have student agency. Within classrooms, teachers use norms, character expectations and habits of scholarship, as well as clear structures and strategies for teaching collaborative skills and conflict resolution, to ensure emotional safety and to promote courage and risk taking in intellectual adventure.



OREGON AT-A-GLANCE SCHOOL PROFILE CONTINUED

City View Charter School



Outcomes

Our Staff (rounded FTE)



15

Teachers



2

Educational assistants



2

Counselors/ Psychologists



87%

Average teacher retention rate



80%

% of licensed teachers with more than 3 years of experience



Yes

Same principal in the last 3 years

	REGULAR ATTENDERS	ENGLISH LANGUAGE ARTS	MATHEMATICS
American Indian/Alaska Native			
Asian			
Black/African American			
Hispanic/Latino			
Multiracial			
Native Hawaiian/Pacific Islander			
White			
Free/Reduced Price Lunch			
Ever English Learner			
Students with Disabilities			
Migrant			
Homeless			
Talented and Gifted			
Female			
Male			
Non-Binary			

About Our School

BULLYING, HARASSMENT, AND SAFETY POLICIES

Our number one priority is the physical and emotional safety of our students. To that end, we have a multi-tiered approach including a network of professionals, policies, procedures and systems in place to ensure the safety and security of our school community. Through the comprehensive counseling program, students receive individual, small group, and classroom guidance on bullying and harassment prevention. Additional character building, conflict mediation, and restorative justice programming emphasize the importance of building positive relationships, empathy, and compassion, which further works to mitigate unsafe and harmful behaviors.

EXTRACURRICULAR ACTIVITIES

City View offers a variety of after school activities, including: Chess Club, Math Gamers, Battle of the Books, LEGO Robotics and community service activities. We are always open to volunteers who would like to work with our students to provide new learning experiences.

PARENT ENGAGEMENT

Parents are asked to be an integral part of their child's successful learning process at City View Charter School. Volunteerism is highly recommended and helps build connections through school events, traditions, fieldwork and overnight trips. Parents collaborate with their student and teacher to create learning goals that focus on academic and character growth for the year. EL schools explicitly recognize that families care about their children's education, bring strengths and add value to the community. In addition, schools build and sustain partnerships with community organizations and cultural institutions.

COMMUNITY ENGAGEMENT

City View engages in a variety of service projects each year, both as individual classes and as an all-school community. All students participate in EL Education's 'Better World Day' to improve a local organization or individual in need. As part of our community engagement, we partner with local organizations to make our content authentic and purposeful. Each classroom attends multiple local fieldwork opportunities, which extend curriculum beyond the walls of the classroom, as well as overnight trips.