

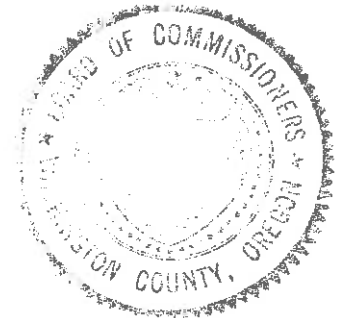


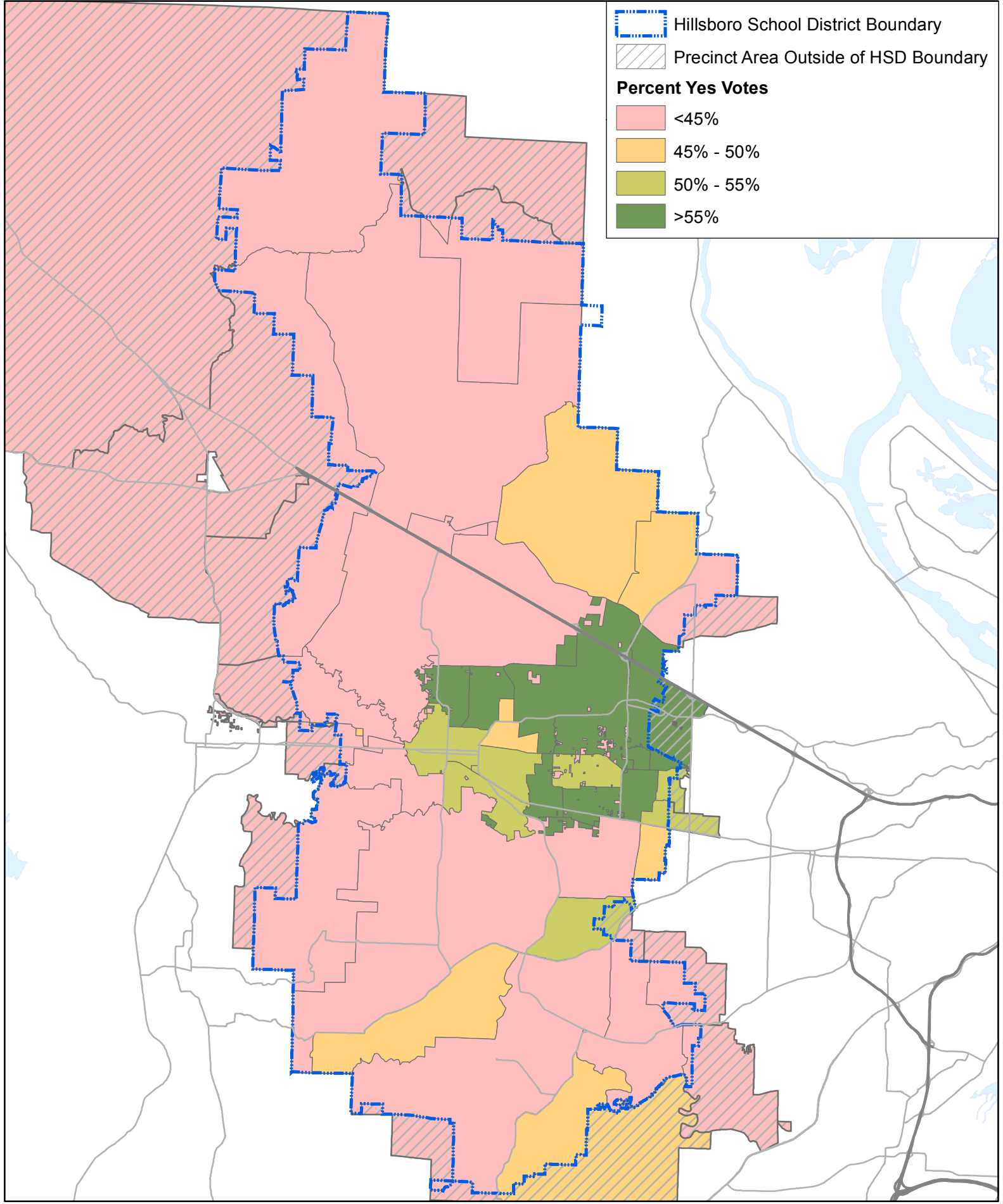
Issue Paper #6: 2006 Bond Vote Results


1. Background


At the first Bond Advisory Committee meeting, committee members requested information about the voting results of the successful 2006 School Bond vote. Staff has reviewed the 2006 results by precinct, including the actual vote counts by precinct (attached). In addition, staff prepared the attached figure that shows the distribution of percentage “yes” votes by precinct throughout the district.

		VOTES		PERCENT		VOTES		PERCENT	
Hi Joro School District 1J Measure 34-128									
vote for 1									
01 = Yes		18,931	52.19	03 = OVER VOTES		7			
02 = No		17,340	47.81	04 = UNDER VOTES		1,609			
		01	02	03	04				
0301	301 RURAL NW COUNTY	57	76	0	2				
0303	303 WITCH HAZEL	86	111	0	9				
0304	304 BUTTERNUT	808	831	0	111				
0307	307 WILLOW CREEK	629	514	0	29				
0308	308 BLOOMING FERN HILL	85	153	0	8				
0309	309 HAWTHORNE FARMS	1229	723	0	95				
0313	313 HILLSBORO-UNINCORP	80	123	0	16				
0314	314 GLENCOE	207	298	0	20				
0315	315 HELVETIA	224	256	0	23				
0316	316 PUMPKIN RIDGE	288	423	0	22				
0317	317 VERBOORT	21	67	0	8				
0318	318 MINTER BRIDGE	926	871	0	61				
0319	319 QUATAMA STREET	358	249	0	26				
0322	322 JACKTOWN	48	45	0	3				
0323	323 INDIAN HILLS	983	799	1	120				
0325	325 HILLSBORO-ISLANDS	1	0	0	0				
0326	326 RURAL BANKS	29	54	0	5				
0327	327 BROWN MIDDLE SCHOOL	995	790	0	59				
0328	328 FARMINGTON VIEW	347	547	0	34				
0329	329 CENTURY SCHOOL	1084	952	1	88				
0330	330 NORTH PLAINS	217	452	0	37				
0331	332 ORENCO STATION	941	669	0	57				
0332	333 JOHN OLSEN	585	264	0	68				
0334	334 DIXIE MOUNTAIN	28	42	0	0				
0335	335 JACKSON SCHOOL	1505	1066	0	73				
0336	336 FAIRGROUNDS	759	783	0	43				
0337	337 WALNUT ST	1060	1043	1	77				
0338	338 CORNELIUS	277	360	0	33				
0341	341 CORNELIUS-SCHEFFLIN	45	96	0	4				
0343	343 MOOBERRY	1363	1090	0	86				
0344	344 HILLSBORO CENTRAL	996	941	1	84				
0345	345 W/HILLSBORO UNINCORP	17	32	0	2				
0346	346 CORNELIUS/TUAL RIVER	67	97	0	8				
0356	356 ALOHA-WEST	258	246	1	43				
0358	358 SEMINOLE ESTATES	292	231	1	39				
0370	370 ROCK CREEK	809	640	0	73				
0373	373 CORNELIUS PASS	137	146	0	7				
0374	374 JACOBSON RD	4	1	0	0				
0394	394 CORNELIUS EAST	7	8	0	1				
0398	398 COOPER MOUNTAIN	7	30	0	3				
0410	410 BEEF BEND RD	3	4	0	0				
0422	422 FG NORTH/UNINCORP	0	7	0	0				
0426	426 GRONER	68	86	0	9				
0427	427 SCHOLLS	356	499	0	28				
0430	430 BALD PEAK	154	160	0	11				
0431	431 MOUNTAIN HOME	112	122	1	8				
0439	439 PCC	36	50	0	8				
0440	440 HILLSBORO-SOUTH	104	78	0	18				
0452	452 JOHNSON/185TH	239	215	0	50				








 Hillsboro School District Boundary


 Precinct Area Outside of HSD Boundary

Percent Yes Votes

 <45%

 45% - 50%

 50% - 55%

 >55%

