



2019 Elementary School Bond Projects

Report to the Board

October 23, 2018

2019 Elementary School Bond Projects

BROOKWOOD ELEMENTARY SCHOOL REPLACEMENT

Project Description

- Replacement of existing Brookwood Elementary with a new 600-student elementary school on existing site (prototype for future elementary schools)

Projected Construction Dates

- Start date: June 2019
- Completion Date: August 1, 2020



2019 Elementary School Bond Projects

BROOKWOOD ELEMENTARY SCHOOL REPLACEMENT

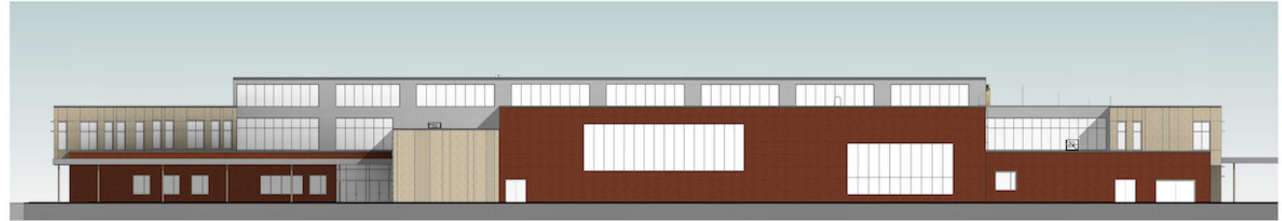
Proposed Elevations



BROOKWOOD EAST ELEVATION



BROOKWOOD WEST ELEVATION



BROOKWOOD NORTH ELEVATION



BROOKWOOD SOUTH ELEVATION

2019 Elementary School Bond Projects

BROOKWOOD ELEMENTARY SCHOOL REPLACEMENT

Site Plan

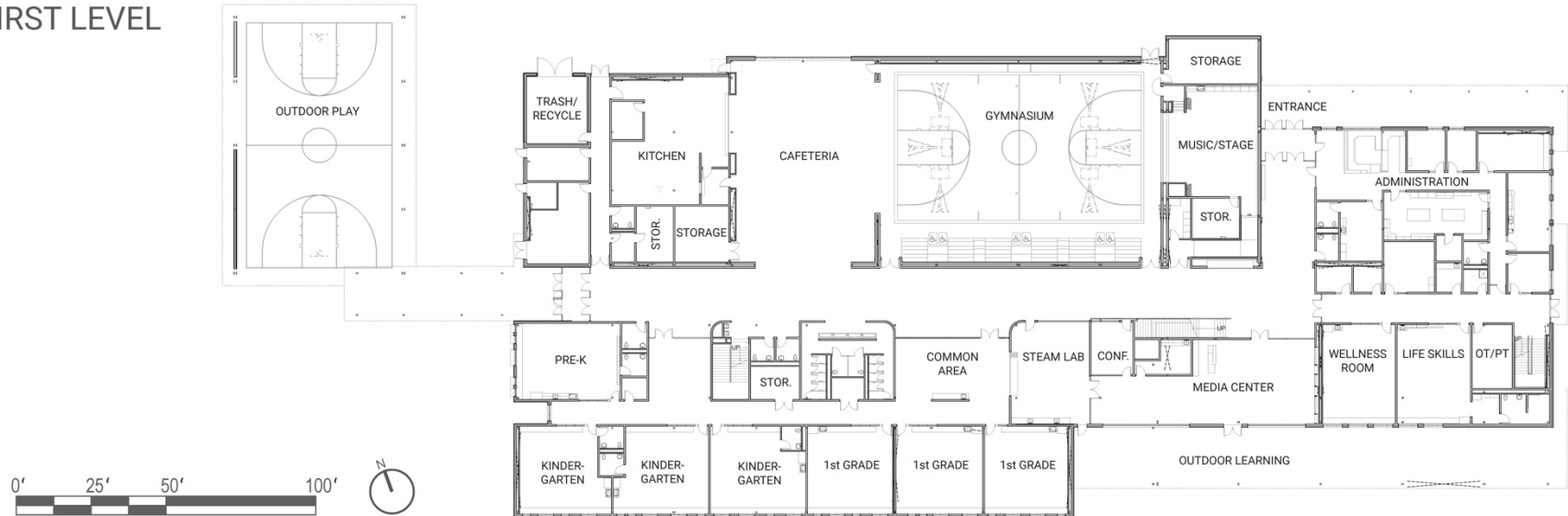


2019 Elementary School Bond Projects

BROOKWOOD ELEMENTARY SCHOOL REPLACEMENT

Proposed Floor Plans

FIRST LEVEL

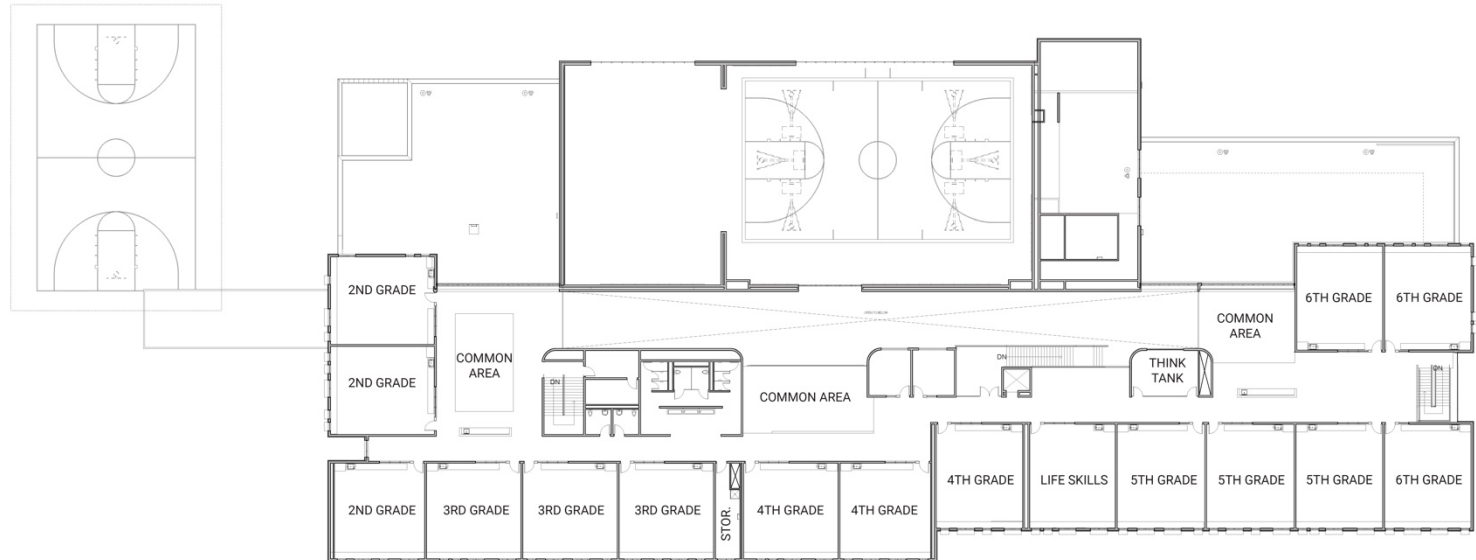


2019 Elementary School Bond Projects

BROOKWOOD ELEMENTARY SCHOOL REPLACEMENT

Proposed Floor Plans

SECOND LEVEL



2019 Elementary School Bond Projects

NEW ELEMENTARY SCHOOL #28 – NORTH PLAINS

Project Description

- Construction of new 600-student elementary school in Sunset Ridge development (based on new Brookwood Elementary School building prototype)

Projected Construction Dates

- Start date: June 2019 (or June 2020)
- Completion Date: August 2020 (or August 2021)



2019 Elementary School Bond Projects

NEW ELEMENTARY SCHOOL #28 – NORTH PLAINS

Proposed Perspectives



NORTH PERSPECTIVE



SOUTH PERSPECTIVE

NEW ELEMENTARY SCHOOL #28 – NORTH PLAINS

NW West Union Road

ES #28

GENERAL SITE PL

SCALE: 1"=200'

NEW ELEMENTARY SCHOOL # 28 – NORTH PLAINS

The diagram is a detailed general site plan for a school facility located along NW Jackson School Rd. The plan shows a large rectangular building footprint with various internal divisions. To the north of the building are two large parking areas, one labeled 'PARKING LOT' and another 'PARKING LOT'. A curved driveway or path leads from the parking areas towards the building. To the east of the building is a large green area designated as a 'PLAYGROUND'. The site is bounded by several streets: NW Jackson School Rd to the west, NW 29th Ave to the south, and NW 28th Ave to the east. Other streets shown include NW 27th Ave, NW 26th Ave, NW 25th Ave, NW 24th Ave, NW 23rd Ave, NW 22nd Ave, NW 21st Ave, NW 20th Ave, NW 19th Ave, NW 18th Ave, NW 17th Ave, NW 16th Ave, NW 15th Ave, NW 14th Ave, NW 13th Ave, NW 12th Ave, NW 11th Ave, NW 10th Ave, NW 9th Ave, NW 8th Ave, NW 7th Ave, NW 6th Ave, NW 5th Ave, NW 4th Ave, NW 3rd Ave, NW 2nd Ave, NW 1st Ave, NW 0th Ave, NW -1st Ave, NW -2nd Ave, NW -3rd Ave, NW -4th Ave, NW -5th Ave, NW -6th Ave, NW -7th Ave, NW -8th Ave, NW -9th Ave, NW -10th Ave, NW -11th Ave, NW -12th Ave, NW -13th Ave, NW -14th Ave, NW -15th Ave, NW -16th Ave, NW -17th Ave, NW -18th Ave, NW -19th Ave, NW -20th Ave, NW -21st Ave, NW -22nd Ave, NW -23rd Ave, NW -24th Ave, NW -25th Ave, NW -26th Ave, NW -27th Ave, NW -28th Ave, NW -29th Ave, NW -30th Ave, NW -31st Ave, NW -32nd Ave, NW -33rd Ave, NW -34th Ave, NW -35th Ave, NW -36th Ave, NW -37th Ave, NW -38th Ave, NW -39th Ave, NW -40th Ave, NW -41st Ave, NW -42nd Ave, NW -43rd Ave, NW -44th Ave, NW -45th Ave, NW -46th Ave, NW -47th Ave, NW -48th Ave, NW -49th Ave, NW -50th Ave, NW -51st Ave, NW -52nd Ave, NW -53rd Ave, NW -54th Ave, NW -55th Ave, NW -56th Ave, NW -57th Ave, NW -58th Ave, NW -59th Ave, NW -60th Ave, NW -61st Ave, NW -62nd Ave, NW -63rd Ave, NW -64th Ave, NW -65th Ave, NW -66th Ave, NW -67th Ave, NW -68th Ave, NW -69th Ave, NW -70th Ave, NW -71st Ave, NW -72nd Ave, NW -73rd Ave, NW -74th Ave, NW -75th Ave, NW -76th Ave, NW -77th Ave, NW -78th Ave, NW -79th Ave, NW -80th Ave, NW -81st Ave, NW -82nd Ave, NW -83rd Ave, NW -84th Ave, NW -85th Ave, NW -86th Ave, NW -87th Ave, NW -88th Ave, NW -89th Ave, NW -90th Ave, NW -91st Ave, NW -92nd Ave, NW -93rd Ave, NW -94th Ave, NW -95th Ave, NW -96th Ave, NW -97th Ave, NW -98th Ave, NW -99th Ave, NW -100th Ave.

GENERAL SITE PL

SCALE: 1"=200'

2019 Elementary School Bond Projects

NEW ELEMENTARY SCHOOL # 28 – NORTH PLAINS

Site Plan

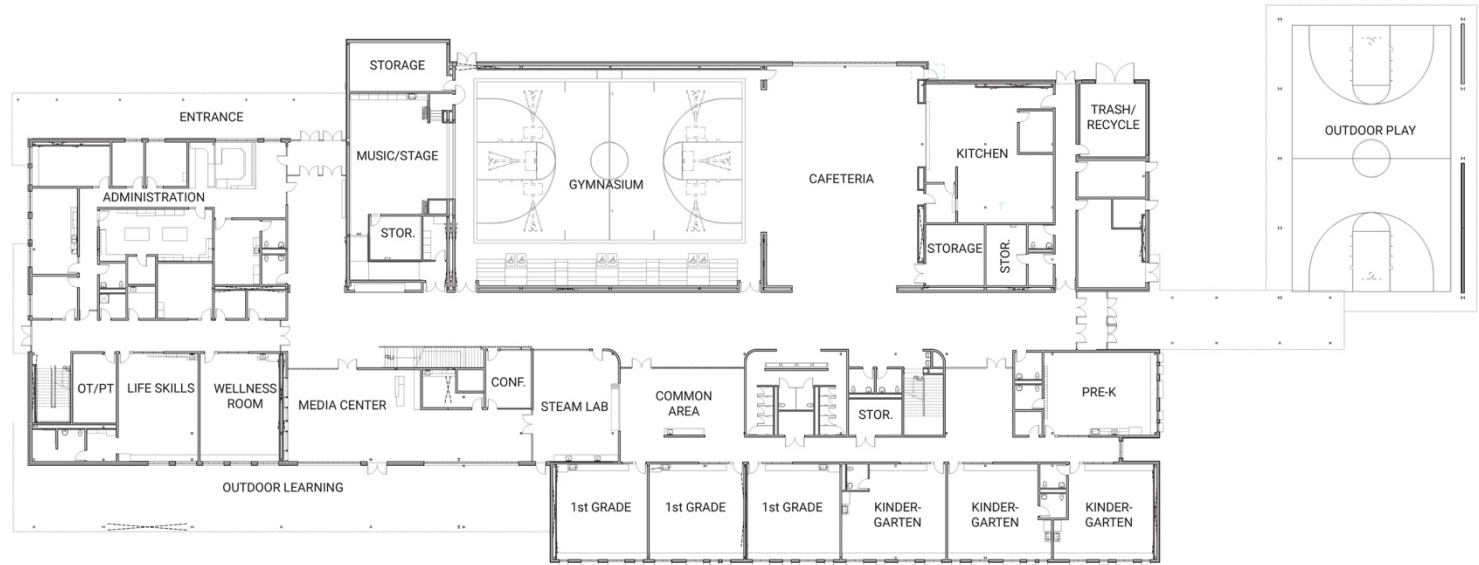


2019 Elementary School Bond Projects

NEW ELEMENTARY SCHOOL #28 – NORTH PLAINS

Proposed Floor Plans

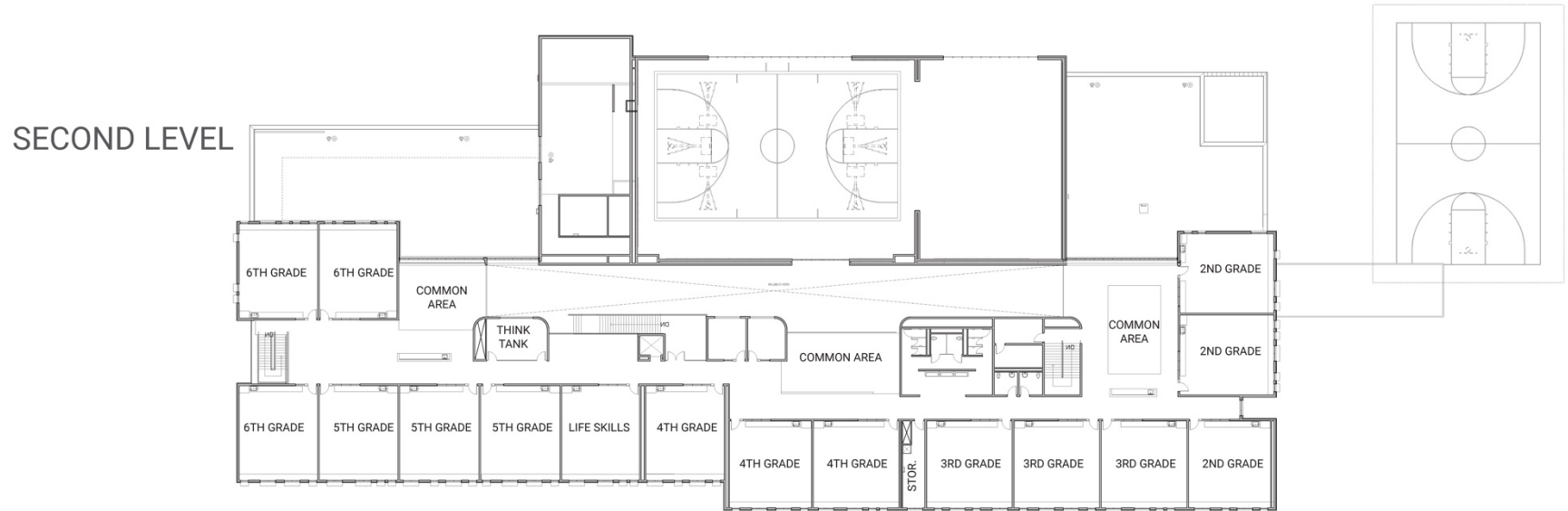
FIRST LEVEL



2019 Elementary School Bond Projects

NEW ELEMENTARY SCHOOL #28 – NORTH PLAINS

Proposed Floor Plans



2019 Elementary School Bond Projects

EASTWOOD ELEMENTARY SCHOOL IMPROVEMENTS

Project Description

- New gymnasium
- Replace portable classrooms with new modular building (four classrooms)
- Safety and security upgrades
 - Entry vestibule
 - Security cameras
 - Card key access
 - Strobes, visual warning inside and outside building
- New playground
- Seismic upgrades
- Flexible classroom furniture
- Roofing
- HVAC upgrades

Projected Construction Dates

- Start date: March 2019
- Completion Date: August 15, 2019

Note: Parent/bus dropoff improvements were completed in summer 2018



EASTWOOD ELEMENTARY SCHOOL

[illegible]

2019 Elementary School Bond Projects

MOOBERRY ELEMENTARY SCHOOL IMPROVEMENTS

Project Description

- New gymnasium
- Replace portable classrooms with new modular building (five classrooms)
- Safety and security upgrades
 - Entry vestibule
 - Security cameras
 - Card key access
 - Strobes, visual warning inside and outside building
- New playground
- Seismic upgrades
- Flexible classroom furniture
- Roofing
- Add air conditioning/HVAC upgrades
- Replace domestic water pipe

Projected Construction Dates

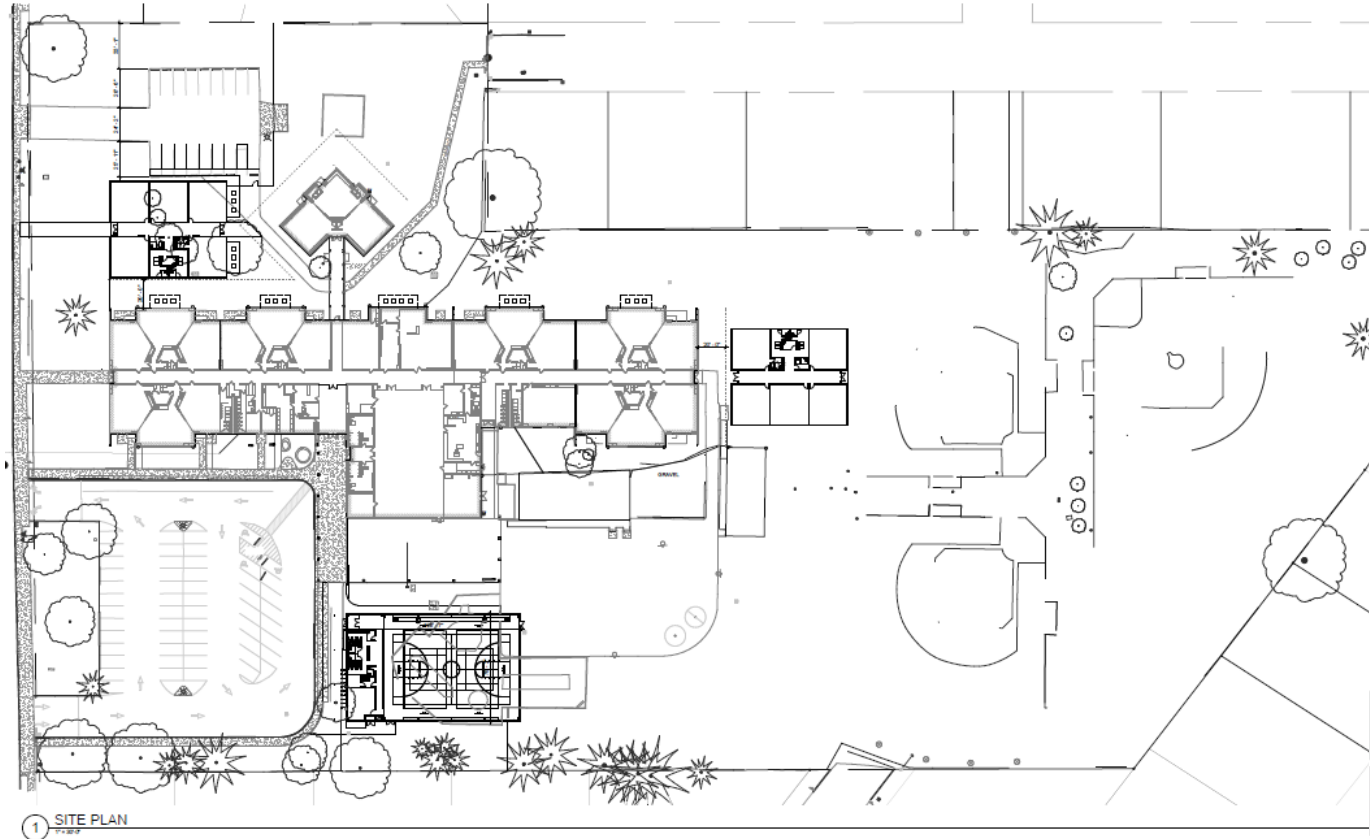
- Start date: March 2019
- Completion Date: August 15, 2019



2019 Elementary School Bond Projects

MOOBERRY ELEMENTARY SCHOOL

Site Plan



2019 Elementary School Bond Projects

LENOX ELEMENTARY SCHOOL IMPROVEMENTS

Project Description

- Parent/bus dropoff improvements
- Safety and security upgrades
 - Entry vestibule
 - Security cameras
 - Card key access
 - Strobes, visual warning inside and outside building
- Seismic upgrades
- Flexible classroom furniture
- Roofing
- Add air conditioning/HVAC upgrades/DDC controls
- ADA compliance upgrades

Projected Construction Dates

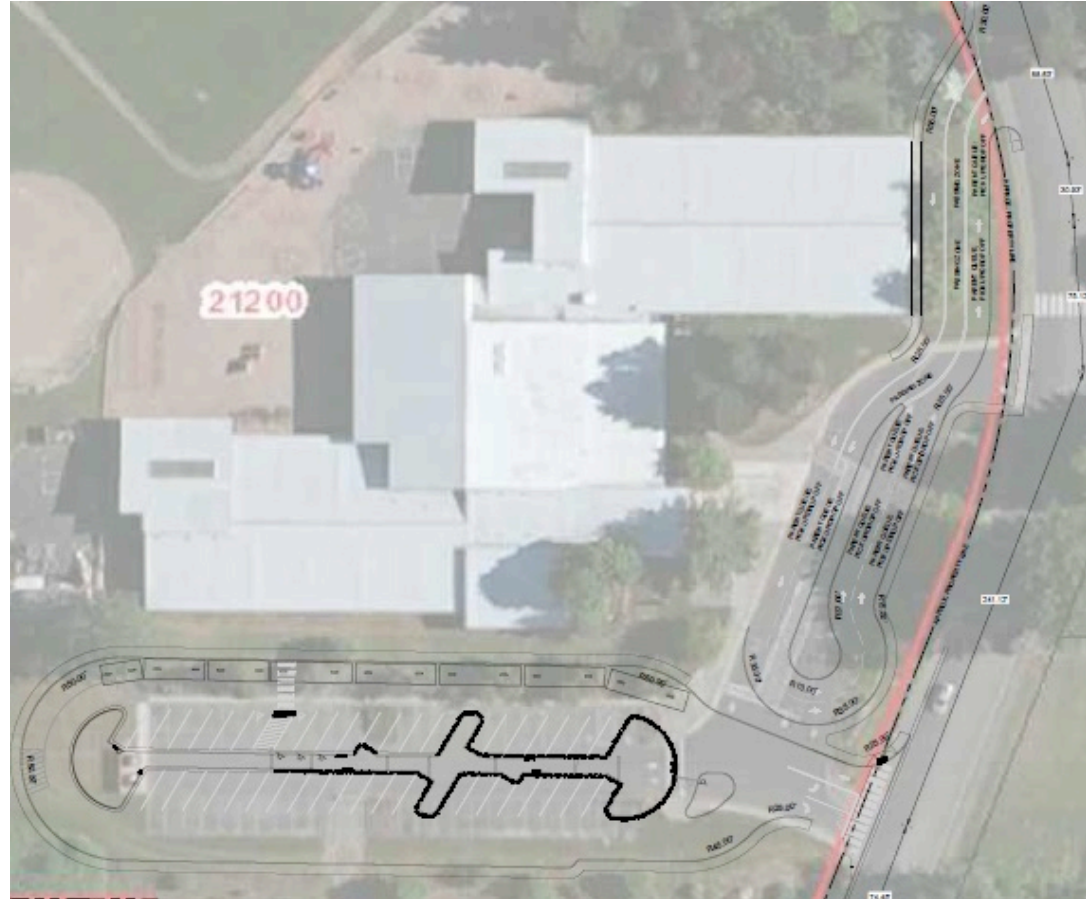
- Start date: June 2019
- Completion Date: August 15, 2019



2019 Elementary School Bond Projects

LENOX ELEMENTARY SCHOOL

Site Plan



2019 Elementary School Bond Projects

WEST UNION ELEMENTARY SCHOOL IMPROVEMENTS

Project Description

- Safety and security upgrades
 - Entry vestibule
 - Security cameras
 - Card key access
 - Strobes, visual warning inside and outside building
- Seismic upgrades
- Flexible classroom furniture
- Roofing
- Add air conditioning
- ADA compliance upgrades

Projected Construction Dates

- Start date: June 2019
- Completion Date: August 15, 2019

Note: New playground was installed in summer 2018



2019 Elementary School Bond Projects

JACKSON ELEMENTARY SCHOOL IMPROVEMENTS

Project Description

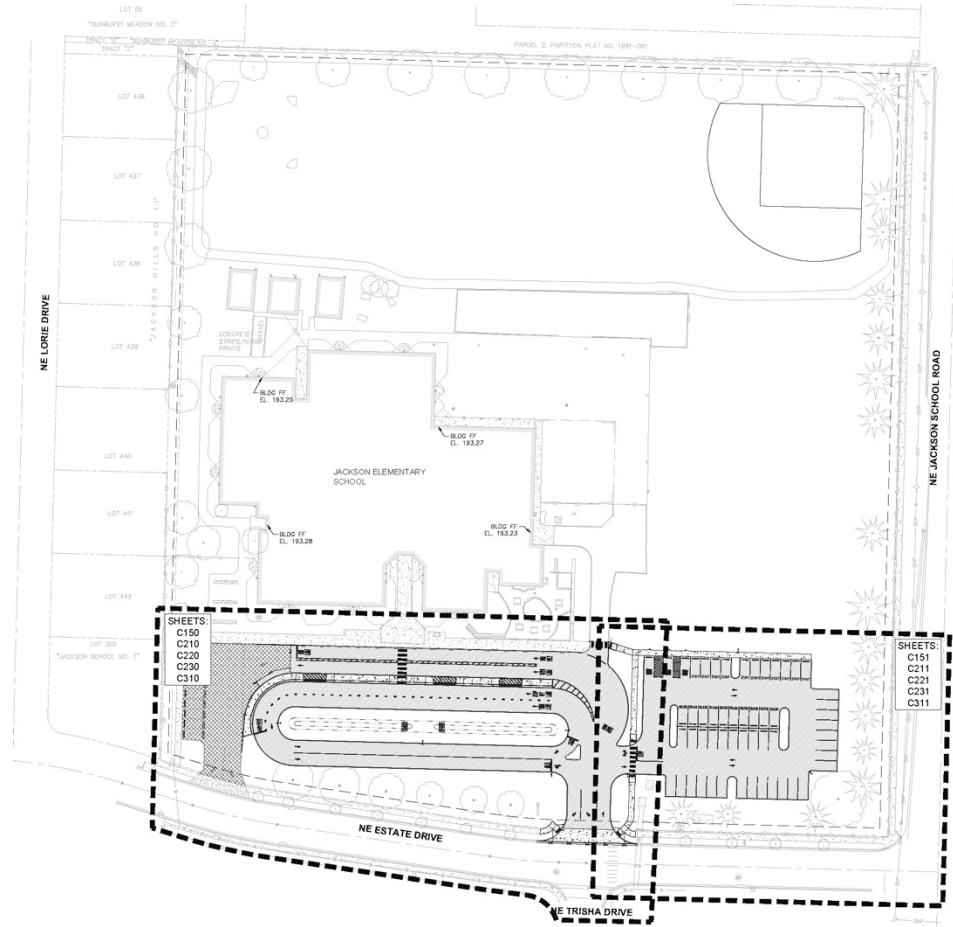
- Parent/bus dropoff improvements
- Relocate Jacob's Field baseball field

Projected Construction Dates

- Start date: June 2019
- Completion Date: August 15, 2019



Site Plan



2019 Elementary School Bond Projects

FLEXIBLE CLASSROOM FURNITURE

The following elementary schools will be receiving new flexible classroom furniture during the summer of 2019

- WL Henry Elementary School
- Imlay Elementary School
- Ladd Acres Elementary School
- McKinney Elementary School
- Orenco Elementary School
- Quatama Elementary School
- Patterson Elementary School
- Rosedale Elementary School



Actual furniture installed at Farmington View Elementary School in summer 2018



Learn more...

You can follow the progress of the Hillsboro School District 2017 Bond at:

www.Hillsboro-Bond.org

or contact:

Adam Stewart, Capital Projects Officer,
stewart@hsd.k12.or.us or 503-844-1340

Jane Siguenza, Bond Marketing Specialist,
siguenzj@hsd.k12.or.us or 503-844-1761

