

**SB 187**  
**Comprehensive**  
**School Safety Plan**  
**Process & Templates**  
**STEAM@Stipe Elementary School**



**STEAM @ STIPE**  
IMAGINE. INNOVATE. INSPIRE

5000 Lyng Ave.

San Jose, CA 95111

Phone: (408) 227-7332

Board Adopted: \_\_\_\_\_

## TABLE OF CONTENTS

The following document is an addendum to the District Comprehensive Safety Plan. The District Comprehensive Safety Plan is the main body of the document. Each school has a site specific document that works in tandem with the District's plan. The Comprehensive Safety Plan is designed to be utilized as a resource for prevention/mitigation, preparedness, response and recovery planning and training as well as for meeting the guidelines of the Standardized Emergency Management System (SEMS), the National Incident Management System (NIMS) and Title 1, Division 4, Chapter 8 Government Code.

It is a living document to meet site, district and community needs, forms or requirements. It is NOT to be a "grab and go" guide in an actual emergency.

### Table of Contents

Safety Plan Signature Page.....	4
Safety Plan Goals.....	5
Incident Command System Team .....	14
Command Posts .....	15
Emergency Response Teams .....	16
Evacuation Map.....	19
Ingress and Egress Map.....	20
Before and After School Care.....	21
Emergency Communication Numbers.....	23
Legislative Requirements.....	24

**All sites will refer to the District Comprehensive Safety Plan for all emergency preparedness, safety and operation protocol. All procedures have been standardized throughout the District.**

**The following information is school site specific.**

## School Safety Planning Committee

The school site council is responsible for developing the school site safety plan or for delegating the responsibility to a school safety planning committee. (Ed. Code 35294.1)

The school site safety committee shall be composed of the following members: the principal or designee, one teacher who is a representative of the recognized certificated employee organization; one parent/guardian whose child attends the school; one classified employee who is a representative of the recognized classified employee organization; other members if desired. (Ed Code 35294.1)

Local law enforcement has been consulted (Ed. Code 39294,1) Other local agencies, such as health care and emergency services, may be consulted if desired. (Ed Code 39294.2)

Other members of the school or community may provide valuable insights as members of the School Safety Planning Committee. Additional members may include:

- A representative from the local law enforcement agency
- School Resource Officers
- Guidance Counselor
- Special Education Department Chairperson
- One or more key community service providers
- Student representative(s)
- Disciplinary team member
- Staff leaders
- Additional parent representatives

**STEAM@Stipe SCHOOL SAFETY TEAM**

The undersigned members of the STEAM@Stipe School Safety Planning Committee certify that the requirements of the SB 187 Safety Plan have been met.



Title: Principal, Lauren Tilston

Title: School Site Council Parent, Kristine Anaya

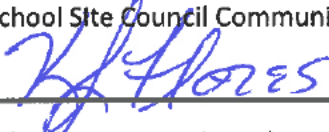


Title: School Site Council Parent, Matthew Gard



Title: School Site Council Parent, Monica Acevedo

Title: School Site Council Community Member, Kelly Flores



Title: School Site Council Teacher Representative, Maricena Hernandez



Title: School Site Council Teacher Representative, Monica Duran



Title: School Site Council Classified Staff Member, Paula Sahagun



District Safety Committee Chair, Oscar Ortiz

**THE STIPE SAFE SCHOOL PLAN WAS APPROVED BY THE STIPE SCHOOL SITE COUNCIL**

ON 1/23/24.

# STEAM@Stipe ELEMENTARY SCHOOL

## Safety Plan Goals

---

### Annual Safety Goals

The School Safety Planning Committee shall make an assessment of the current status of school crime committed on campus and at school-related functions and of appropriate strategies and programs that will provide or maintain a high level of school safety. (Ed. Code 35924.2)

While the School Safety Planning Committee reviews school, district and community crime data trends such as the California Safe School Assessment, other data can bring value to the discussions. Such data may include:

- Mental Health Data
- State, District or Site Surveys (such as the Youth Risk Behavior Survey)
- Disciplinary Data
- Community Police Data

Data may be more valuable if disaggregated by gender, age, zip code, ethnicity, etc. Current trends should be reviewed as well.

**Based on data analysis**, the School Safety Planning Committee identifies one or two **safety-related goals for the next school year as well as the strategies and/or programs that will be used to meet those goals**. The objective is to provide meaningful goals in order to improve the campus climate.

The goals are reported, with the Safety Plan, to the Board of Trustees and are shared with the school staff and community.

In order to keep the goals as a safety focus for the school year, it is recommended that at least three brief meetings be held to review data and progress. The progress can be reported to the School Site Council, staff, parent groups and the Board of Trustees.

The year-end assessment should be completed in May and reported.

**STEAM@Stipe ELEMENTARY SCHOOL**  
**Safety Plan Goals**  
**2023 - 2025**

**GOAL 1: Increase the safety of all students and staff by installing various security measures**

**Strategy 1.1:** Installation of cameras throughout the school campus

**Assessment 1.1:** Installation has been completed

**Strategy 1.2:** Provide software with recording capabilities as well as live viewing options

**Assessment 1.2:** Installation has been completed

**Strategy 1.3:** Install fencing around the perimeter of the school.

**Assessment 1.3:** Installation is estimated to begin in April 2024 and be completed by August 2024.

**GOAL 2: Ensure adequate necessary supplies in the event of an emergency.**

**Strategy 2.1:** Each class will receive a bin, along with a gallon-sized zip-top bag for every student. Parent letters will accompany the bags home, asking for snacks to be stored inside the ARCC.

**Assessment 2.1:** Confirm storage of classroom bins with zip top bags for every student by October.

**Strategy 2.2:** Updated materials include Rescue Backpacks and First Aid Supplies that are replaced every 5 years including such items as band aids, bandages, etc.

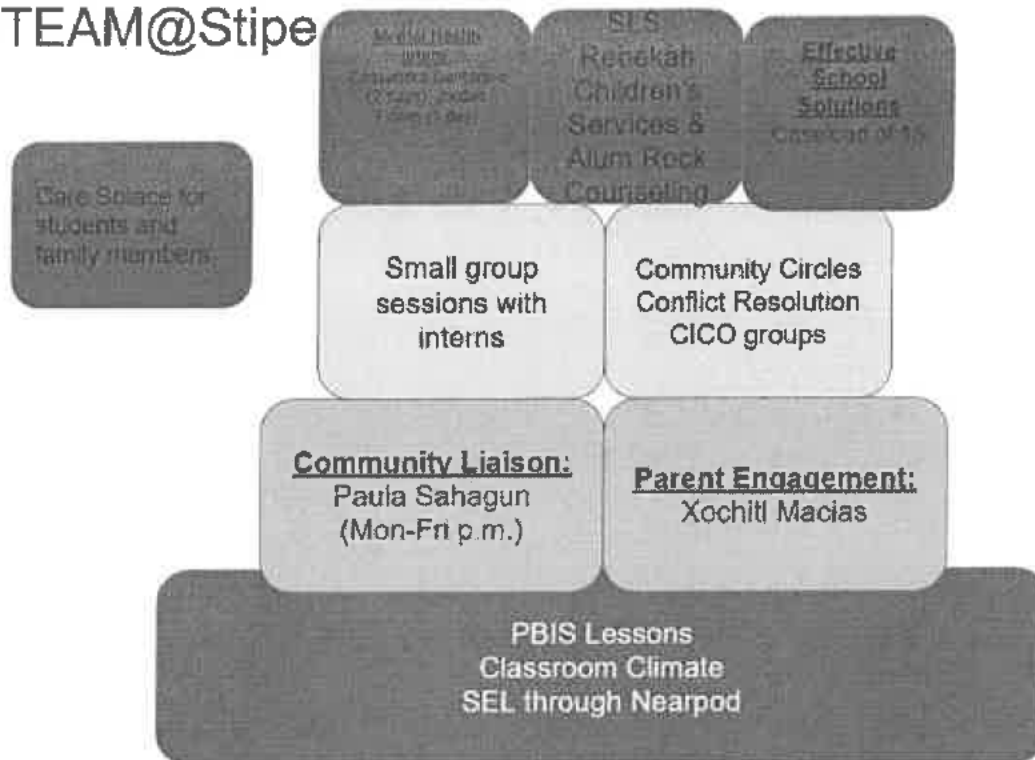
**Assessment 2.2:** Verify items have been delivered and placed in the ARCC by February 2024.

**Strategy 2.3:** Increase the number of synced walkie-talkies on campus to increase communication during an emergency.

**Assessment 2.3:** Purchase by Spring of 2024

**GOAL 3: Provide mental health support for students.**

# STEAM@Stipe



**Strategy 3.1:** Marriage/Family Therapist support for 3 days

**Strategy 3.2:** Outside agency referrals for mental health support through School Linked Services for Alum Rock Counseling, Community Solutions, Rebekah's Children Services, Effective School Solution

**Strategy 3.3:** Daily Effective Schools Solutions (ESS) supports students diagnosed as Emotionally Disturbed + other students as needed

**Strategy 3.4:** Parents and students can be referred through Care Solace

**Assessment 3.1 through 3.4:** Number of students being served by mental health support systems.

**Strategy 3.5:** Individual School Strategies, such as Calm Down Corners, Community Circles, SEL Lessons through Nearpod

**Assessment 3.5:** Connectedness and Belonging Survey Results

## **GOAL 4: Increase student safety during school arrival and departing times.**

**Strategy 4.1** Engage in assessment of the needs.

**Strategy 4.2** Communicate with City of San Jose to support assessment and discuss possible strategies (e.g., additional crosswalks, pedestrian signs, speed signs, crossing guards)

**Assessment 4.1 & 4.2** Survey families, count the number of students who enter/exit from various directions, results from city assessment

**Strategy 4.3** Seek parent volunteers and/or increase teacher supervision duties to include entrances to school (2024-25)

The table displays the suspension and expulsion rates at the school, in the district, and throughout the state. Expulsions occur only when required by law or when all other alternatives are exhausted.

**State Priority: School Climate**

The SARC provides the following information relevant to the State priority: School Climate (Priority 6).

- Pupil suspension rates;
- Pupil expulsion rates; and
- Other local measures on the sense of safety

**Suspensions and Expulsions for School Year 2019–20 Only**  
(data collected between July through February, partial school year due to the COVID-19 pandemic)

Rate	School 2019–20	District 2019–20	State 2019–20
Suspensions	0.46%	0.84%	2.45%
Expulsions	0.00%	0.07%	0.05%

Note: The 2019–20 suspensions and expulsions rate data are not comparable to other year data because the 2019–20 school year is a partial school year due to the COVID-19 crisis. As such, it would be inappropriate to make any comparisons in rates of suspensions and expulsions in the 2019–20 school year compared to other school years.

**Suspensions and Expulsions**  
(data collected between July through June, each full school year respectively)

Rate	School 2020–21	School 2021–22	District 2020–21	District 2021–22	State 2020–21	State 2021–22
Suspensions	0.00%	0.00%	0.02%	2.08%	0.20%	3.17%
Expulsions	0.00%	0.00%	0.00%	0.00%	0.00%	0.07%

Note: Data collected during the 2020–21 school year may not be comparable to earlier years of this collection due to differences in learning mode instruction in response to the COVID-19 pandemic.



**Suspensions and Expulsions by Student Group  
(School Year 2021–22)**

<b>Student Group</b>	<b>Suspensions Rate</b>	<b>Expulsions Rate</b>
All Students	0.00	0.00
Female	0.00	0.00
Male	0.00	0.00
Non-Binary	0.00	0.00
American Indian or Alaska Native	0.00	0.00
Asian	0.00	0.00
Black or African American	0.00	0.00
Filipino	0.00	0.00
Hispanic or Latino	0.00	0.00
Native Hawaiian or Pacific Islander	0.00	0.00
Two or More Races	0.00	0.00
White	0.00	0.00
English Learners	0.00	0.00
Foster Youth	0.00	0.00
Homeless	0.00	0.00
Socioeconomically Disadvantaged	0.00	0.00
Students Receiving Migrant Education Services	0.00	0.00
Students with Disabilities	0.00	0.00

**Attendance Factor:**

The attendance factor accounts for the difference between enrollment and attendance. It is the average percentage of enrolled students typically attending school on any given day. The factor is calculated annually using prior school year data.

- 2017-2018 Attendance Factor: 95.90%
- 2019-2020 Attendance Factor: 95.73%
- 2019-2020 Attendance Factor: COVID
- 2020-2021 Attendance Factor: 95.20%
- 2021-2022 Attendance Factor: 89.10%
- 2022-2023 Attendance Factor: 91.68%

Chronic absenteeism:

Students are considered chronically absent if they are absent at least 10 percent of the instructional days that they were enrolled to attend in a school. A distinguishing feature of this measure is that the goal is reversed.

2017-2018 Chronic Absenteeism Rate:	7.90%
2018-2019 Chronic Absenteeism Rate:	11.0%
2019-2020 COVID	
2020-2021 Chronic Absenteeism Rate:	14.7%
2021-2022 Chronic Absenteeism Rate:	44.7%

**Chronic Absenteeism by Student Group  
(School Year 2021–22)**

Student Group	Cumulative Enrollment	Chronic Absenteeism Eligible Enrollment	Chronic Absenteeism Count	Chronic Absenteeism Rate
All Students	382	374	167	44.7
Female	170	166	75	45.2
Male	212	208	92	44.2
American Indian or Alaska Native	1	1	1	100.0
Asian	60	59	12	20.3
Black or African American	16	16	9	56.3
Filipino	12	11	2	18.2
Hispanic or Latino	264	259	136	52.5
Native Hawaiian or Pacific Islander	6	5	1	40.0
Two or More Races	11	11	1	9.1
White	10	10	4	40.0
English Learners	162	157	63	41.4
Foster Youth	4	4	4	100.0
Homeless	0	0	0	0.0
Socioeconomically Disadvantaged	210	207	112	54.1
Students Receiving Migrant Education Services	2	2	0	0.0
Students with Disabilities	61	60	37	61.7

**School Facilities & Safety**

STEAM@Stipe strives to provide a safe and healthy environment for our students and staff.

STEAM@Stipe School is one of 19 schools in the Oak Grove School District in South San Jose. With the collaborative efforts to maintain Safe Schools through district support (i.e. Safe Schools Specialists, Community Liaison, Health Clerks, bond facility renovation funds, District Safety Committee, Board policies, and collaboration with the San Jose Police Department for Lockdown Drills), and site supports (i.e. Parent Faculty Association, School Site Council, staff, students and Student Council and the community, Safety Checks, Wellness Policy and committee, Bond and Parcel Tax Funding), an

emphasis has been in place within the district and throughout the community to ensure that safety is our number one priority. To this end, there are continuous improvement processes and collaborative efforts that provide comprehensive health education and a strong academic foundation within a safe and secure learning environment that ensures success for all students.

The table shows the results of the most recent school facilities inspection. While reviewing this report, please note that even minor discrepancies are reported in the inspection process. The items noted in the table have been corrected or are in the process of remediation. The data in the table was collected August, 2019.

**School Facility Good Repair Status**

Using the most recently collected Facility Inspection Tool (FIT) data (or equivalent), provide the following:

- Determination of repair status for systems listed
- Description of any needed maintenance to ensure good repair
- The year and month in which the data were collected
- The rate for each system inspected
- The overall rating

Year and month of the most recent FIT report: January 2023

System Inspected	Rating	Repair Needed and Action Taken or Planned
<b>Systems:</b> Gas Leaks, Mechanical/HVAC, Sewer	Good	
<b>Interior:</b> Interior Surfaces	Good	
<b>Cleanliness:</b> Overall Cleanliness, Pest/Vermin Infestation	Good	
<b>Electrical:</b> Electrical	Good	
<b>Restrooms/Fountains:</b> Restrooms, Sinks/Fountains	Good	
<b>Safety:</b> Fire Safety, Hazardous Materials	Good	
<b>Structural:</b> Structural Damage, Roofs	Good	
<b>External:</b> Playground/School Grounds, Windows/Doors/Gates/Fences	Good	

**Overall Facility Rate**

Year and month of the most recent FIT report: January 2023

Overall Rating:	Good
-----------------	------

*Last updated: 2/1/23*

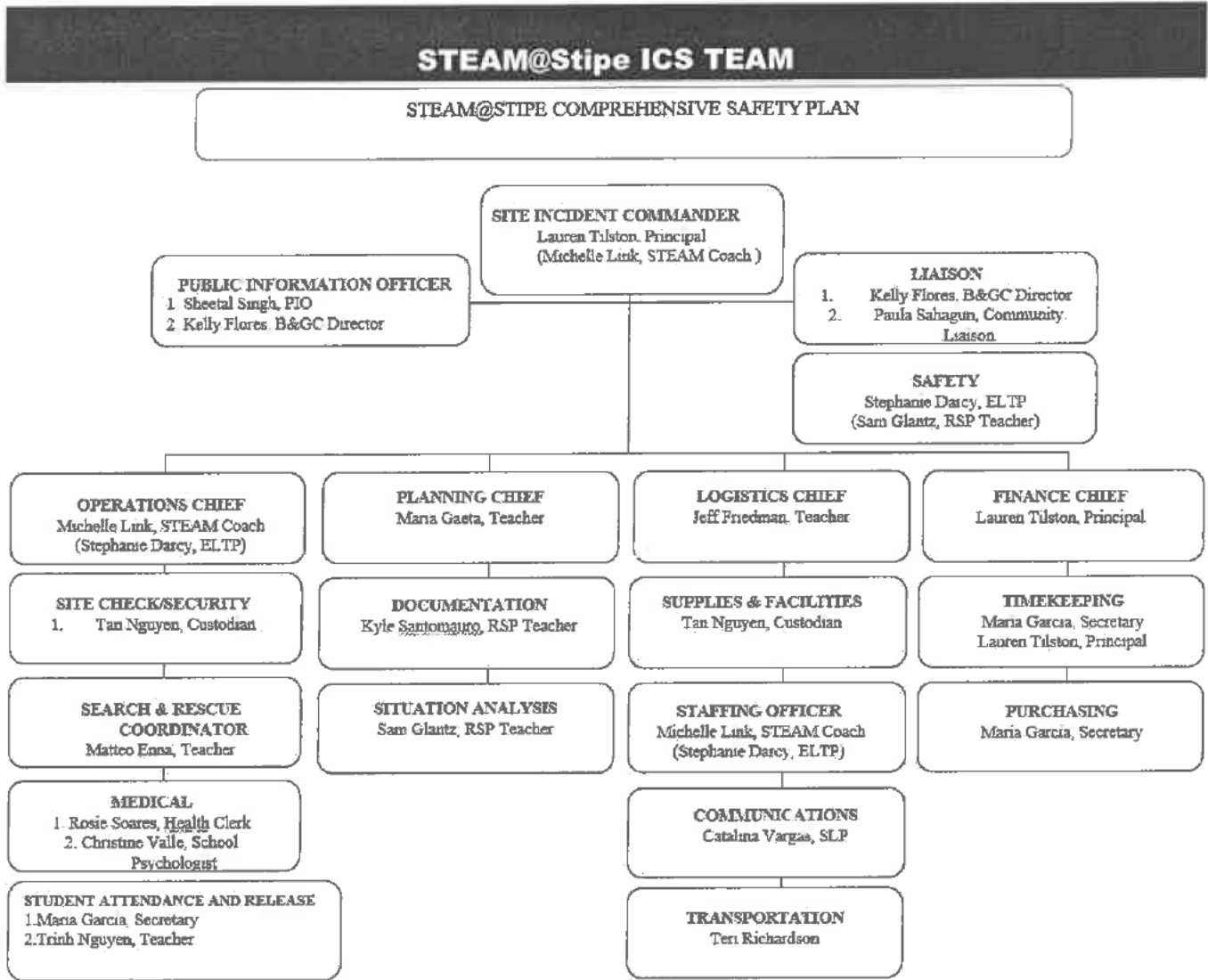
Cleaning Process

STEAM@Stipe provides a safe and clean environment for students, staff, and volunteers. The district has adopted cleaning standards for all schools. Basic cleaning operations are performed on a daily

basis throughout the school year with emphasis on classrooms and restrooms. A joint effort between students and staff helps keep the campus clean and litter-free. The principal works daily with the custodial staff to develop sanitation schedules that ensure a clean, safe, and functional learning environment.

**Maintenance & Repair** A scheduled maintenance program is administered by STEAM@Stipe's custodial staff on a regular basis, with heavy maintenance functions occurring during vacation periods. Additionally, a scheduled maintenance program is administered by Oak Grove School District to ensure that school grounds and facilities remain in excellent repair. A work order process is used when issues arise that require immediate attention. Emergency repairs are given the highest priority; repair requests are completed efficiently and in the order in which they are received.

# STEAM@Stipe SCHOOL EMERGENCY PROCEDURES



# Staging Areas – STEAM@Stipe

**Primary Staging Area - Blacktop lines next to container by Lyng Drive**

**Secondary Staging Area - Blacktop lines behind the Library**

## Command Posts

One indoor and one outdoor area for the Command Center to be stationed in the event of a district emergency.

Primary: Outside of Community Room

Secondary: Library

## Off Site School Evacuation Centers

To be determined in conjunction with the Director of Facilities

Primary: Great Oaks Park

Secondary: Edenvale Community Center

Unification Site	Staffing	
Great Oaks Park	Lauren Tilston, or as assigned	All Staff
Edenvale Community Center	Lauren Tilston, or as assigned	All Staff

# Emergency Response Teams

## Command Center Support

Team	Team Leader:	Post:
Incident Commander	Lauren Tilston	Incident Command Center
Safety	Stephanie Darcy	Incident Command Center
Liaison	Kelly Flores Paula Sahagun	Parking Lot Sidewalk
Public Information Officer	Sheetal Singh Kelly Flores	ECO Parking Lot Sidewalk

## Operations

Team	Team Leader:	Staff Members:
Operations Chief	Michelle Link	
Security	Tan Nguyen	Jeff Friedman
Search & Rescue	Matteo Enna	Chi Ratsythong Letong Huynh Megan Apana Vick Duenas Juan Pablo Montenegro
Medical	Rosie Soares Christine Valle	Dulce Rojas Leslie Bazan



Student Attendance and Release	Maria Garcia	Trinh Nguyen <i>Runners:</i> Wendy Garcia Melissa Dimmick Briana Campos
--------------------------------	--------------	---

Team	Team Leader:	Staff Members:
<b>Planning Chief</b>	Maria Gaeta	
Documentation	Kyle Santomauro	
Situation Analysis	Samara Glantz	

## Logistics

Team	Team Leader:	Staff Members:
<b>Logistics Chief</b>	Jeff Friedman	
Supplies/Facilities	Tan Nguyen	
Staffing Officer	Stephanie Darcy	
Communication	Catalina Vargas	
Transportation	Teri Richardson	

Team	Team Leader:	Staff:
<b>Finance Chief</b>	Lauren Tilston	
Timekeeping	Lauren Tilston Maria Garcia	
Purchasing	Maria Garcia	

**Buddy Teacher System Roster**

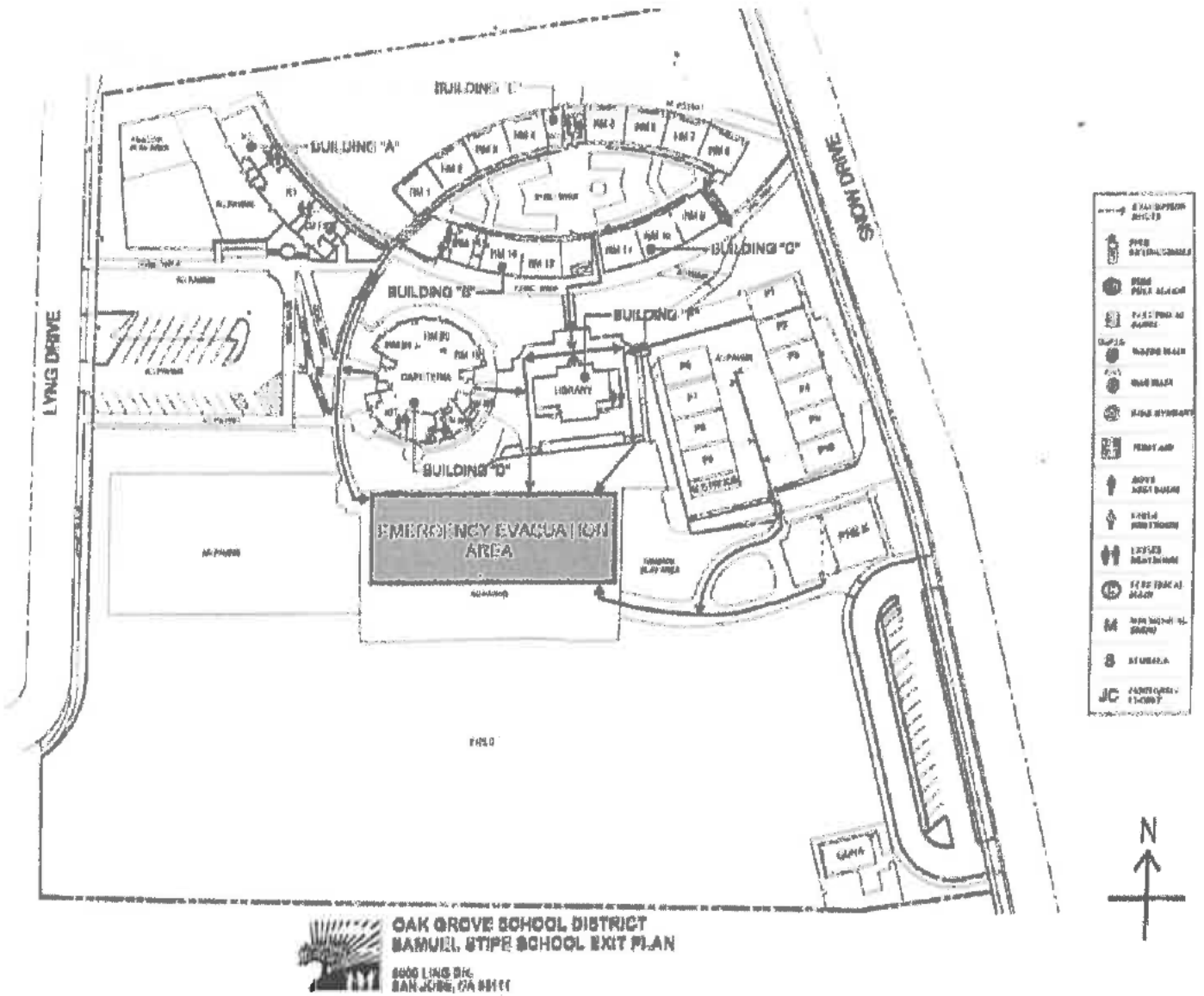
*This list should be updated in September of each school year to accommodate any staff changes.*

Note: Teachers assigned to lead or have staff assignments should be paired with teachers assigned to the student assembly area. In an emergency, when directed to evacuate to the assembly area, all teachers will take any emergency items and move their classes to the assembly area. Teachers assigned to lead or have staff assignments will then "hand off" responsibility for their class to their Buddy Teacher and report to their emergency assignment.

Responsibility for Remaining with Students		Responsibility for Assuming Emergency Task		Emergency Task
Room #	Teacher	Room #	Teacher	
K2	Maricena Hernandez	K1	Matteo Enna	Search and Rescue Coordinator
16	Sandy Carranza & Maria Villanueva (IA)			
17	Dedra Downing	18	Trinh Nguyen	Student Release
9	Laurie Loforti	10	Chi Ratsythong	Search and Rescue
6	Catalina Hernandez	4	Megan Apana	Search and Rescue
5	Monica Duran			
3	Angie Lopez	1	Jeff Friedman	Logistics Chief
P4	Lily Medina, Virginia Bautista, Socorro Rosales, Sharouz Zarringhalam (IA's), Nancy Kwong (SLP)	P3	Maria Gaeta Juan Pablo Montenegro (IA)	Planning Chief Search and Rescue
P9	Diana Kinkel & Jasneet Bansal (IA), Aliza Supnet	P9	Letong Huynh	Search and Rescue
P5	Heidi Bayless, Elsa Pimienta & Sabrina Bocanegra (IA's), Joe Capacio (RBT)	P7	Vick Duenas Leslie Bazan	Search & Rescue Medical (Mental Health)

Site:	STEAM@Stipe Elementary School	School Year:	2023-2024
Updated prepared by:	Lauren Tilston	Date:	January 4, 2023

# Evacuation Map





## **Before and After-School Programs on Oak Grove School District Campuses**

As part of SB 187, the Oak Grove School District recognizes the importance of tailoring the Comprehensive Safety Plan for after-school programs. The District requires that all after-school program providers (BASE, Boys & Girls Club, Catalyst, Champions, Think Together, Headstart) annually share Agency-specific:

- Safety Plans and Procedures
- Staff Directory and Leadership Contacts

While after-school programs are included in each school's site-specific safety plan, there may be multiple program providers operating on campus after school that may not be addressed in each program provider's or school site's overall plan. To ensure that all preschool, before and after-school programs on OGSD campuses are prepared in the untimely event of an emergency, the district recommends that these partners (BASE, Boys & Girls Club, Catalyst, Champions, Think Together, Headstart) meet annually with their school site administration to:

1. Review and update school-specific Safety Plans to include their program hours
2. Identify the common Hazards of Before and Afterschool Access and Locations
3. Collaborate to Identify Key Emergency Roles and Responsibilities Before and After School
4. Understand Facilities, Equipment, and Emergency Supplies Access

To Confirm that each school site is adequately prepared after school, the Oak Grove School District will convene all Preschool, Before and Afterschool program providers (BASE, Boys & Girls Club, Catalyst, Champions, Think Together, Headstart) annually to review and discuss:

- District Plans and Protocols
- Develop Coordinated Communication Plans
- Coordination and Implementation of Emergency Disaster Drills

## **Licensed Preschool Programs on Oak Grove School District Campuses**

Licensed Preschool Programs will follow all State Regulatory requirements for Disaster and Mass Casualty Planning including but not limited to:

- Each licensee shall have a disaster and mass casualty plan of action. The plan shall be in writing and shall be readily available.
- The plan shall be subject to review by the Department and shall include:
- Designation of administrative authority and staff assignments.
- Contingency plans for action during fires, floods, and earthquakes including, but not limited to, the following:
  - Fire safety plan.
  - Means of exiting.
  - Transportation arrangements.

- Relocation sites that are equipped to provide safe temporary accommodations for children.
- Supervision of children during evacuation or relocation, and contact after relocation to ensure that relocation has been completed as planned.
- Means of contacting local agencies, including but not limited to the fire department, law enforcement agencies, and civil defense, and other disaster authorities.
- Any special methods and procedures necessary for the evacuation and relocation of non-ambulatory children.
- The licensee shall instruct all children, age, and abilities permitting, and all childcare personnel, including volunteers, in their duties and responsibilities under the plan.
- Disaster drills shall be conducted at least every six months.
- The drills shall be documented. This documentation shall be kept in the childcare center for at least one year.

#### RESOURCES:

[Disaster Resources/Department of Social Services](#)

[Disaster Preparedness/CA Childcare Health Program](#)

[Stay Safe Procedures in Early Childhood Programs/Head Start](#)

## EMERGENCY COMMUNICATION NUMBERS

Police, Fire & Rescue, Medical, Sheriff, Hazardous Incident

911

Emergency from mobile phone

408-227-8911

Police non-emergency 311

San Jose Mercury 408-920-5444

Sheriff 408-299-3233

### TRANSPORTATION EMERGENCY NUMBERS

Regional Medical Center of SJ 408-259-5000

CHP Goldengate 707-551-4151

Office of Emergencies Services Santa Clara 408-808-7800

CHP Gilroy 408-848-2324

Fire Department 408-277-4619

### RADIO AND TV STATIONS

County of Santa Clara Emergency Medical Services 408-885-4250

KARA 105.7 FM 408-575-1057

Pacific Gas & Electric 800-743-5000

KCBS 740 AM 415-765-4000

American Red Cross 408-577-2178

KFOG 104.5 FM 408-817-5364

San Jose Environmental Services 408-945-3000

KLIV 1590 AM 408-575-1600

City of San Jose Emergency Services 408-277-4595

KLOCK 1170 AM 408-440-0851

Dead Animal Collection 408-578-7297

KGO CH 7 415-954-7777

HazMat 408-277-4659

KNTV CH 11 408-452-4780

Poison Control SDS 800-876-4766  
800-451-8346

KPIX CH 5 415-362-5550

CAL/EPA 916-323-2514

KRON CH 4 415-441-4444

San Jose Water Resource Board 510-622-2300

KTVU CH 2 510-834-1212

OSHA 800-321-6742

### SAFETY DATA SHEETS

CalOSHA-Fremont 510-794-2521

#### HOW TO REQUEST A SDS

1-800-451-8346

3E Company

San Jose Water 408-279-7900

Provide as much of the following product information as possible:

Highway Patrol 800-835-5247

- Produce Name
- Manufacturer Name
- Product Number (found on side of container)
- UPC Code (if available)

CHP Non Emergency 707-551-4100

## GENERAL INFORMATION – SCHOOL SAFETY

### District Commitment to School Safety

It is the policy of the Oak Grove School District Board of Education that all students enrolled in this district, and all employees employed by this district, have the right to attend campuses, which are safe and secure. The Board believes that a beginning step toward safer schools is the development of a comprehensive plan for school safety by every school within the District. The Board intends that parents, students, teachers, administrators, counselors, classified personnel, and community agencies develop safe school plans, including local law enforcement, and approved by the Board. The school site committee will review these safe school plans on an annual basis and proposed changes will be submitted to the Board for approval.

### LEGISLATIVE REQUIREMENTS

The California Education Code (sections 35294.10-35294.15) outlines the requirements of all schools operating any kindergarten and any grades 1 to 12, inclusive, to write and develop a school safety plan relevant to the needs and resources of that particular school.

This requirement was presented in Senate Bill 187, which was approved by the Governor and chaptered in 1997. This legislation contained a sunset clause, which stated that this legislation would remain in effect only until January 1, 2000. **See Appendix for Senate Bill 187 Text. Senate Bill 334 was approved and chaptered in 1999 and perpetuated this legislation under the requirement of the initial legislation.**

Comprehensive School Safety Plans are required under SB 187/SB 334 to contain the following elements:

- Assessment of school crime committed on school campuses and at school-related functions
- Child abuse reporting procedures
- Disaster procedures
- Suspension and expulsion policies
- Procedures to notify teachers of dangerous pupils
- Anti-harassment policy
- Sexual harassment policies
- School wide dress code policies
- Procedures for safe ingress and egress
- Policies enacted to maintain a safe and orderly environment
- Rules and procedures on school discipline
- Uniform Complaint process
- Goals on providing a safe and healthy environment

The Comprehensive School Safety Plan will be reviewed and updated by **STEAM@Stipe School Site Council** every year. The school will report on the status of its school safety plan including a description of its key elements in the annual school accountability report card.