

WELCOME TO SDL!

SDL = Self Directed Learning

Plan for Today

25 minutes of work → 5 minute break

25 minutes of work → 5 minute break

25 minutes of work → 5 minute break

SDL is...

- ❖ Self-directed time where you can choose what and how you want to learn to support your performance in Project Time
 - Content vs. Skills
- ❖ Students work and complete playlists
 - Power Focus Areas = 21%
 - Additional Focus Areas = 9%
- ❖ Quiet, focused, productive work time

Materials Needed for SDL



Chromebook &
Power Cord



Headphones



Notebook(s)
Pen/Pencil

Materials Needed for SDL

SCIENTIFIC
AMERICAN®

A Learning Secret: Don't Take Notes with a Laptop

Students who used longhand remembered more and had a deeper understanding of
the material

By Cindi May on June 3, 2014 [Véalo en español](#)



The old fashioned way works better. Credit: Credit: Szepy via iStock

"More is better." From the number of gigs in a cellular data plan to the horsepower in a pickup truck, this mantra is ubiquitous in American culture. When it comes to college students, the belief that more is

"Students who used longhand remembered more and had a deeper understanding of the material."

- [Scientific American](#)



Notebook(s)
Pen/Pencil

Materials Needed for SDL

Scientific research has repeatedly shown that learning and memory are negatively affected by background noise, especially when that noise includes speech.

- [Literature Review](#)



Headphones
...For playlist videos or for white noise

How to remember materials...

Make a list of items you always need to remember when you leave the house or leave class then...

- **OPTION 1 - Special Spot:** Always put them away in the same place in your backpack
- **OPTION 2 - Count Off:** Count them. If there are 4 items, then make sure you have all 4 before leaving.
- **OPTION 3 - Acronym:** Create an acronym for the items and use it to make sure you have everything.

OTHER IDEAS??? What are some other tricks that have worked for you in the past to help you remember things?

Norms

- **Respect and Support Each-other**
- **Use Technology Responsibly**
 - Everyone should be on a playlist related website
 - Only used for learning relevant to their classes
- **One Voice**

Norms

- **Be on Time and Ready to Shine**
 - In seat by class time
 - In the Platform and working 1 minute after
 - Teacher will give time notifications
 - Lock Doors at the start of class
- **Follow Directions at all Times**
- **Stand Up for Your Education**
 - Every second counts
 - Not packing up until you're dismissed

Rules

- No phones, even out, even music - if I see it, I take it, no warning
 - Parents should contact you during breaks and lunch, we need to communicate this to parents during back to school night
 - Students can ask teacher to go to the office to call for emergencies

Rules

- Music
 - Only on Pandora or Spotify
 - Only on playlists created
- Tardies
 - 3 tardies = call home

Rules

- Seating
 - Sit in your assigned seat unless I direct you otherwise
 - Conversation and then office
- No food in classrooms
 - You may go to office if you are hungry and need food

Consequences

If norms and rules are not upheld:

- Warned
- Conversation
- Office for a reflection and phone call home
- Multiple office visits result in a suspension

Quiz Time!

SDL is...

Self-directed time where you can choose what and how you want to learn to support your performance in Project Time

=

A lot of freedom to choose when, what, how you learn content.

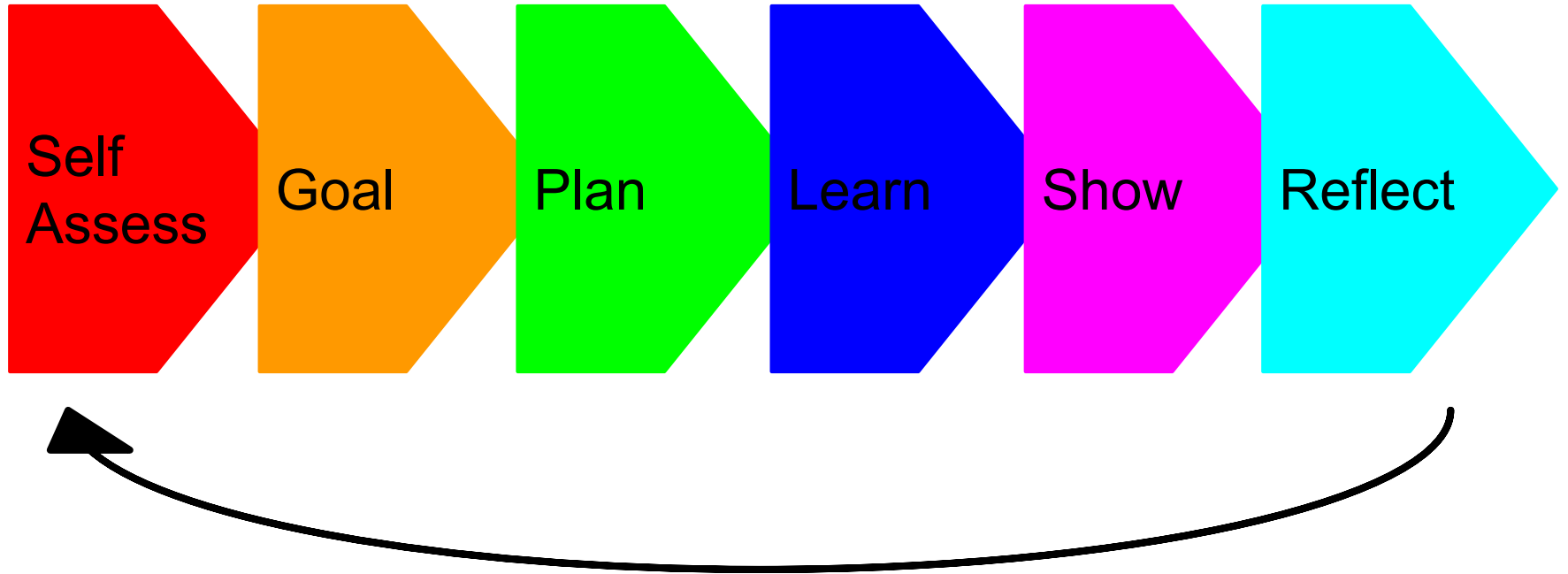
Getting in the mindset!

Learning content is a process that is

- **Methodical** - you have a set way of studying
- **Intentional** - you choose to learn they way you learn best
 - Materials
 - Pace

“It’s a marathon, not a sprint!”

Self Directed Learning Cycle



Self Assess



I can do this!



I'm getting there.



I need help!

Make a goal



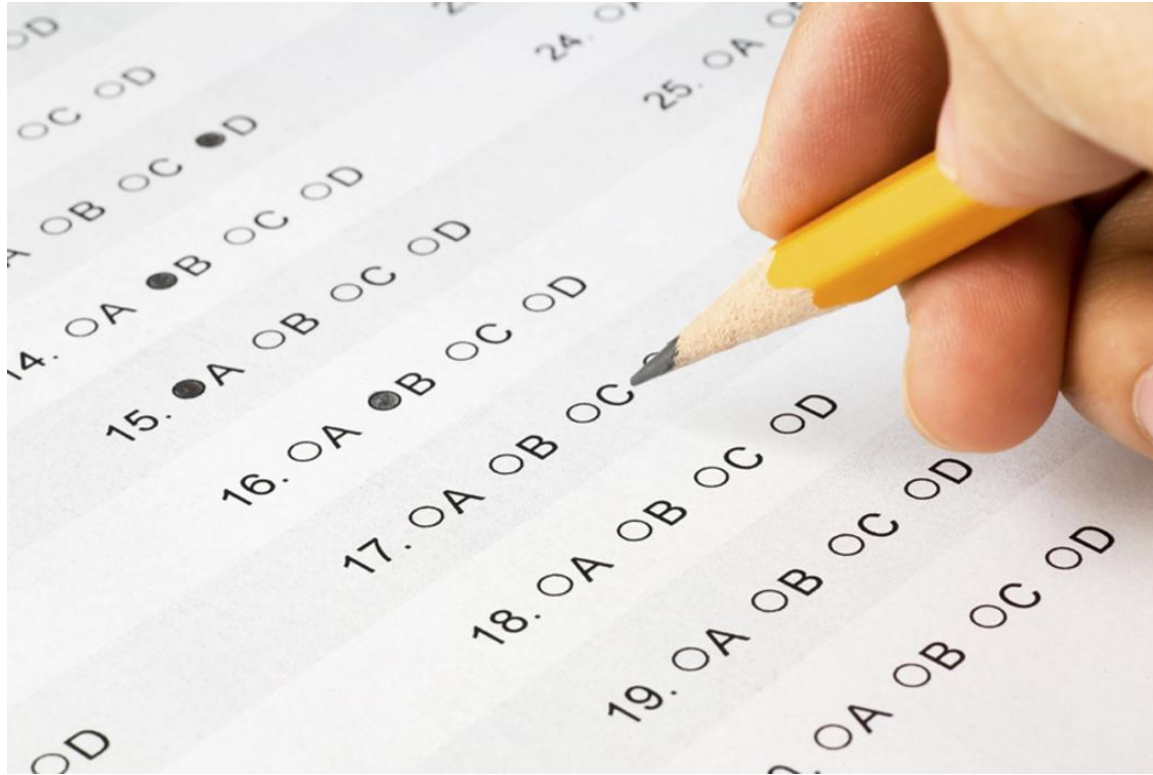
Plan



Learn



Show



Reflect



Proof of your understanding of Self-Directed Learning

Every student will have to turn in an SDL Portfolio that includes evidence of the SDL cycle for each of their classes:

- English
- Math
- History
- Science
- Spanish

Proof of your understanding of Self-Directed Learning

Until students turn in their SDL portfolio, they will have to show every step of the SDL cycle for a playlist before they take a test.

After students turn in their SDL portfolio, they will have the freedom to choose when and what they learn material.

Platform Exploration

Yesterday, Mr. Alvarez introduced the Platform to you. Today:

1. Go to your Platform
2. Click on your “This Year” tab
3. Explore the different playlists you have to pass
4. Write down any questions you have

Q&A

Evidence of Self-Assessment

For the first step in your SDL cycle, you must show that you have taken the diagnostic assessment.

Make a chart of what you know, have to review, and have to learn.

Practice Self-Assessing

1. Take a diagnostic for the first playlist in each of your classes.
2. Make a chart reflecting on what you already know, what you have to review, and what you need to learn.