



Achieve your Instructional Goals with Newsela Professional Learning

Newsela Professional Learning brings your district's priorities to life by bridging the Newsela platform to your instructional practices for your educators and leaders. As a collaborative partner, sessions are tailored to your districts' priorities to ensure our professional learning builds confidence and capability with Newsela in service of your vision for excellent instruction.

Designed to deepen the impact of Newsela at your district, Newsela Professional Learning connects educators to accessible content and interactive features that drive meaningful learning in their classrooms. Grounded in both research-backed instructional approaches and best practices in adult learning, sessions engage educators in active, collaborative learning with both tactical and pedagogical strategies that fit the unique learning goals of their students. In fact, not only do teachers rate our facilitators 5/5, but based on internal Newsela data, those who participate are more likely to put their paid subscriptions to use.

Whether you are looking for an introduction for teachers who are new to your district, ongoing professional learning for teachers across school sites, or sessions to support your administrators and instructional leaders, our range of flexible sessions and coaching services offered both synchronously and asynchronously can fit the varied needs of your teams throughout the school year.

As a preview, live sessions are led by knowledgeable, former educators who model effective practice, provide expert guidance, and facilitate application based on participant experience and context, while our self-paced courses, available on-demand for the full school year, offer educators autonomy to spend time with the resources, approaches, and tasks most relevant to their classroom practice.



Review the full details of our offerings below to design a professional learning plan that works for your instructional priorities and district needs.

Make a Professional Learning Plan with Newsela

Newsela provides a range of professional learning sessions and coaching options to support your district's plans and priorities. Find options to meet the needs of the varied experience levels and roles in your district.



Start with **introductory sessions** to get new users off to the right start with their Newsela subscriptions.



Connect educators to **ongoing professional learning** to deepen their practice with Newsela across instructional categories.



Empower your internal champions and enable successful implementation with sessions for **administrators and instructional leaders**.

Click each category to see details around the session topics, recommended audiences, and available formats.

[Introductory Series for New Users and Subscriptions](#)

Launch your Newsela subscriptions and help educators effectively implement Newsela in their classrooms. Schedule our 3-session introductory series to get your educators off to the right start with their Newsela licenses.*

Part 1: Getting Started with Newsela

Choose which session is right for you depending on your LMS:

- Discovering Content and Features**
- Using Newsela and Google Classroom**
- Using Newsela and Canvas**

Part 2: Designing Learning Experiences with Newsela

Part 3: Analyzing Student Activity with Newsela

**sessions can also be booked a la carte*

Ongoing Professional Learning for Experienced Users

Support educators in strengthening their instructional practices that support student learning with Newsela. Browse our offerings below and then select and schedule sessions best related to your district priorities.

Designing Instruction for All Learners

Connect to instructional approaches that support student access to content and learning activities.

- Differentiating Instruction
- Supporting Student Engagement
- Building Background Knowledge
- Supporting English Language Learners
- Inquiry-Based Learning
- Cross-Curricular Literacy

NEWSELA TIP

- Create a professional learning plan from our 20+ sessions based on your goals and teams.

Expanding Culturally Responsive and Social-Emotional Learning Practices

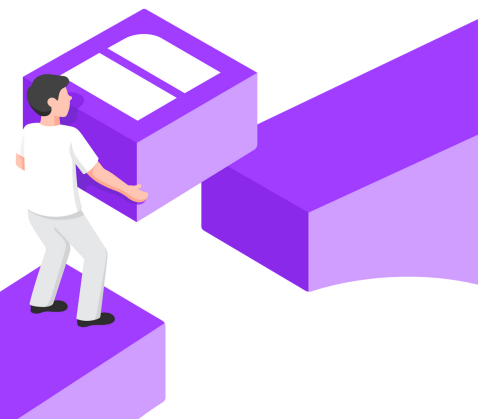
Build educator comfort and capacity around culturally responsive resources and inclusive teaching practices with Newsela.

- Culturally Responsive Teaching
- Tackling Complex Topics
- Social Justice in Your Classroom
- LGBTQIA+ Studies
- Social-Emotional Learning

Complementing Standards and Curriculum

Support your departments in leveraging content that aligns with standards and existing instructional materials.

- Reinforcing Reading Skills
- Vocabulary Development
- Rethinking History
- Integrating Science and Literacy
- Implementing Your Custom Collections
- Using NWEA Data to Drive Instruction



Sessions for Administrators and Instructional Leaders

Empower district leaders and facilitators to support Newsela implementation and advance usage in alignment with your goals. Browse our offerings below and then select and schedule the session or service that best fits your audience.

Train the Trainer Options

Build a cohort of district-based facilitators to plan and deliver training personalized to your needs and goals.

- Train the Trainer: Newsela Foundations**
- Train the Trainer: Advancing Instructional Approaches**
- Train the Trainer: Aligning to Subject-Area Priorities**

Professional Learning Sessions

Provide your administrators and coaches the support they need to advance Newsela usage across your district.

- Maximizing Newsela at Your Schools**
- Scaffolding Instruction with Newsela***
- Meaningful Technology Integration with Newsela***
- Implementing Literacy Practices for Administrators, Part 1: Analysis and Inventory****
- Implementing Literacy Practices for Administrators, Part 2: The Science of Implementation****

**Offered in partnership with BetterLesson. Professional Learning sessions are capped at 30 participants and will require an additional Newsela session credit if attendance goes over that number. Reach out to your Customer Success Manager to schedule.*

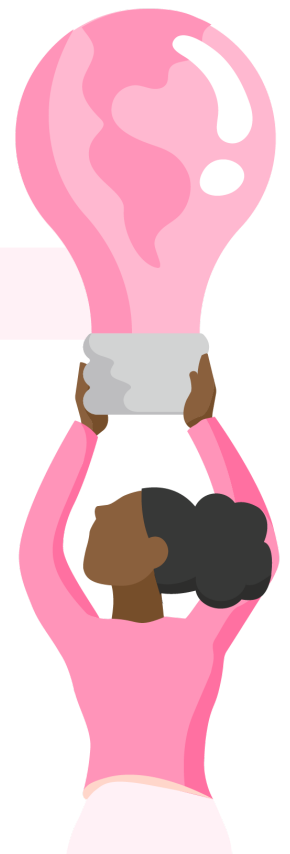
***Offered in partnership with Equitable Literacy.*

Coaching Services

Receive 1:1 support to build capacity among your internal champions and refine their instructional and leadership skills.

- 1:1 Virtual Coaching for Administrators and Instructional Leaders***

**Offered in partnership with BetterLesson.*



Introductory Series for New Users and Subscriptions

Launch your Newsela subscription and help educators effectively implement Newsela in their classrooms. Schedule our 3-session introductory series to get your educators off to the right start with their Newsela licenses.



Part 1: Getting Started with Newsela

Choose which session is right for you depending on your LMS.

Discovering Newsela Content and Features

Connect to the Newsela content most relevant to your subject area and students, and learn how to leverage Newsela features to support student engagement and learning.

- Learn how to find and save relevant content on Newsela
- Build an understanding of how Newsela can increase student engagement and motivation
- Explore Newsela features to customize content for your classroom

Using Newsela and Google Classroom

Explore ways that Newsela and Google Classroom can work hand in hand to help you design and deliver engaging lessons and topics that help students build literacy skills and content knowledge as they read across multiple texts and explore diverse content.

- Learn how to log in and sync your Google Classroom and Newsela classes
- Explore how to build and customize lessons to share on Google Classroom, and explore topic creation
- Examine practices to provide feedback and track student work through Google Classroom to forward learning

Using Newsela and Canvas

Explore ways that Newsela and Canvas can work hand in hand to help you design and deliver engaging lessons and learning modules that help students build literacy skills and content knowledge as they read across multiple texts and explore diverse content.

- Learn how to log in and sync your Canvas and Newsela classes
- Explore how to build and customize lessons and learning modules to share on your Canvas course
- Examine practices to provide feedback and track student work through Canvas



Best for

- All New Users

Session
Delivery


- Live Virtual
- Online Course



Part 2: Designing Learning Experiences with Newsela

Examine instructional practices for leveraging multiple levels of a text to support student learning around a common lesson goal. Review and implement best practices for designing digital assignments that support academic engagement.

- Learn how to use Newsela features to support student access to lesson skills and concepts
- Explore planning approaches for designing instruction across multiple levels of text
- Examine best practices for designing assignments on Newsela that support student engagement

 Best for

- All New Users

Session Delivery


- Live Virtual
- Online Course



Part 3: Analyzing Student Activity with Newsela

Learn about the Newsela Binder and how to leverage it to examine student performance, identify trends, and provide effective feedback. Dive into your own Binder to explore student activity on individual assignments, track student progress over time, and how to make data-driven instructional decisions for individuals and groups.

- Learn how to access and analyze student insights
- Explore ways to incorporate Newsela formative assessments into learning experiences
- Examine strategies for making instructional decisions based on student insights

 Best for

- All New Users

Session Delivery

- In Person*
- Live Virtual
- Online Course

**Limited availability for in-person sessions*

Introductory Series for New Users and Subscriptions | Section 1 Notes:

Ongoing Professional Learning for Experienced Users

Support educators in strengthening their instructional practices with Newsela in ways that advance student learning. Select and schedule multiple sessions related to your district priorities.

Designing Instruction for All Learners

Connect to instructional approaches that support student access to content and learning activities.



Differentiating Instruction with Newsela

Learn how to leverage Newsela's auto-differentiation tools and instructional strategies to support all learners in building skills and knowledge as they access diverse content, engage with new information, and express the new knowledge they have built.

- Learn how to leverage Newsela features to ensure all students can effectively access meaningful and engaging content
- Learn best practices on how to apply Newsela features to engage students in interacting with text to make meaning and build knowledge
- Evaluate and plan learning experiences that invite students to make choices about their reading and the ways they share their new understandings



Best for

- All Subject Area Teachers
- Coaches

Session Delivery

- In Person*
- Live Virtual
- Online Course

**Limited availability for in-person sessions*



Supporting Student Engagement with Newsela

Explore ways to support student motivation, interaction, and choice by leveraging both student-selected and teacher-directed tools, tasks, and texts as students read across diverse content to build literacy skills and subject-area knowledge.

- Learn how teacher actions can build and maintain intrinsic student motivation while interacting with Newsela content
- Explore the student platform in Newsela and the strategies that can be leveraged to encourage intrinsic student motivation
- Examine how to apply Newsela features to customize content to meet learners' unique needs and align to topics you teach



- All Subject Area Teachers
- Coaches

Session Delivery

- Live Virtual
- Online Course



Building Background Knowledge with Newsela

Discover strategies for leveraging Newsela content to engage students in reading across texts to build a deep understanding of concepts and themes. Create meaningful learning experiences connected to your curriculum and objectives that help students develop prerequisite knowledge over time.

- Learn how to curate Newsela content aligned with your instruction that can be used to help students read across texts to build a deep understanding of concepts and themes.
- Explore strategies for using Newsela features to scaffold the learning process for students and assist with background knowledge acquisition
- Develop a plan to sequence reading experiences and employ instructional strategies to build connections and knowledge as students engage with multiple perspectives, content types, and formats.



- All Subject Area Teachers

Session Delivery

- Live Virtual
- Online Course



Supporting English Language Learners with Newsela

Uncover how to use Newsela content and features to engage multilingual learners in practice around multiple modalities throughout a learning experience while supporting access to rigorous texts and academic language.

- Learn how to use Newsela features to scaffold student access to complex texts and concepts
- Explore strategies to promote language practice and application through speaking and listening
- Examine approaches to leverage content as the foundation for explicit language instruction



- All Subject Area Teachers
- Coaches

Session Delivery

- In Person*
- Live Virtual
- Online Course

**Limited availability for in-person sessions*



Inquiry-Based Learning with Newsela

Dive into Newsela content, tools, and strategies to help you design and leverage inquiry learning experiences to facilitate questioning, student-driven exploration of content, synthesis, and informed action.

- Explore strategies to embed inquiry across the curriculum

- Learn how to leverage Newsela content and features to guide students through the inquiry process
- Plan learning experiences that invite students to develop questions, evaluate sources for evidence, and communicate conclusions

 **Best for**

- Coaches
- Teachers
- ELA, Social Studies, Science

Session Delivery


- In Person*
- Live Virtual
- Online Course



Cross-Curricular Literacy with Newsela

Review Newsela content, features, and strategies for developing content knowledge and skills while also teaching and practicing key literacy skills in the subject-area disciplines.

- Learn how to find subject-specific Newsela texts of varied genres
- Explore key literacy skills to teach alongside content area texts
- Plan learning experiences that help students build both literacy skills and content-area skills & knowledge in concert

 **Best for**

- Coaches
- Teachers
- ELA, Social Studies, Science

Session Delivery

- In Person*
- Live Virtual
- Online Course

Expanding Culturally Responsive and Social-Emotional Learning Practice


Build educator comfort and capacity around culturally responsive resources and inclusive teaching practices.



Culturally Responsive Teaching with Newsela

Engage in reflection on aspects of your own identity and those of your students, explore Newsela content that reflects and provides insights into diverse experiences and identities, and select and curate content that connects cultures and represents diverse voices.

- Develop shared understanding of culturally responsive teaching
- Explore identity and culture through reflection activities and content to establish inclusion
- Curate content to connect culture to classroom context

 **Best for**

- All Subject Area Teachers
- Coaches

Session Delivery

- In Person*
- Live Virtual
- Online Course


**Limited availability for in-person sessions*



Tackling Complex Topics with Newsela

Examine strategies and Newsela content that support effective exploration and discussion around complex topics. Take part in text-based Small Learning Community discussion, and curate content and apply strategies for designing learning experiences around complex topics for your students.

- Reflect on your own experiences with complex topics in the classroom
- Understand how Newsela content and features can support engaging students around complex topics in the classroom
- Review or create curations to serve as the foundation for text-based discussion

 **Best for**

- ELA
- Social Studies

Session Delivery


- In Person*
- Live Virtual
- Online Course



Social Justice in Your Classroom with Newsela

Explore the ways that intentional content choices affirm a commitment to social justice and an anti-bias, anti-racist instructional framework. Consider strategies for student engagement through a social justice lens. Build learning experiences for your students that support social justice through the inclusion of diverse perspectives, equitable examples of agency, and engagement and response strategies that elevate student voices.

- Consider the importance of intentional content choices that support representation, amplify unheard or underrepresented perspectives, and present equitable examples of agency
- Explore Newsela content focused on social justice to embed into your subject-area instruction
- Examine ways that Newsela annotations and Write Prompts can be customized and leveraged to support student reflection and meaning-making

 **Best for**

- All Subject Area Teachers

Session Delivery

- In Person*
- Live Virtual
- Online Course

**Limited availability for in-person sessions*



LGBTQIA+ Studies with Newsela

Discover how the content, features, and instructional resources of the Newsela LGBTQIA+ Collection support you and your students in exploring the history, contributions, identities, and experiences of the LGBTQIA+ community throughout the past 100 years.

- Build understanding of the curations and instructional supports in the Newsela LGBTQIA+ Studies Collection
- Examine a collection lesson to connect students to the experiences and contributions of LGBTQIA+ people

- Leverage Collection Lesson Sparks to customize a multi-article assignment

Best for

- ELA and Social Studies

The Newsela LGBTQIA+ Studies Collection license required

Session Delivery

- In Person*
- Live Virtual
- Online Course



Social-Emotional Learning with Newsela

Learn how the Newsela Social-Emotional Learning Collection can support and empower you in incorporating SEL topics and strategies into your core instruction with real-world texts and embedded teaching resources grounded in anti-bias, anti-racist practices.

- Explore content and teaching resources from the Newsela Social Emotional Learning Collection
- Apply Newsela tools and strategies to support students' social emotional development
- Leverage Collection Lesson Sparks to plan for explicit and embedded SEL instruction

Best for

- All Subject Area Teachers

The Newsela Social-Emotional Learning Collection license required

Session Delivery

- In Person*
- Live Virtual
- Online Course

Complementing Standards and Curriculum

Support your departments in leveraging content that align(s) with standards and existing instructional materials.



Reinforcing Reading Skills with Newsela

Dive deep into the Reading Summary section of the Newsela Binder, the available data, and Newsela content and resources for teaching, reteaching, and reinforcing key reading skills. Leverage learnings to plan data-driven instruction and learning experiences focused on essential reading skills.

- Deepen understanding of student reading summary insights on Newsela
- Experience and evaluate sample lessons based on reading skills insights analysis
- Explore Newsela content and instructional resources to support readings skills across content areas

Best for

- All Subject Area
- Coaches

Session Delivery

- In Person*
- Live Virtual
- Online Course


**Limited availability for in-person sessions*



Vocabulary Development with Newsela

Explore Newsela content and tools to support vocabulary development as students read authentic, engaging real-world text. Leverage student-directed and educator-guided strategies to support the development of vocabulary acquisition skills and word knowledge.

- Explore how to use Newsela to build a love of language
- Learn strategies for using Newsela tools to scaffold vocabulary development
- Examine Newsela content and instructional resources which foster vocabulary practice

 **Best for**

- ELA Teachers
- Coaches


Session Delivery

- Live Virtual
- Online Course

 **Rethinking History with Newsela**

Examine Newsela content, tools, and strategies to offer multiple perspectives, connect past and present, and invite inquiry and informed action as students build content knowledge, develop social studies and literacy skills, and make real-world connections through discussion and analysis of diverse sources.


- Explore relevant Newsela content to offer multiple perspectives and connect past and present
- Examine instructional resources to engage students in inquiry around societal issues
- Evaluate approaches to foster student connection and action

 **Best for**

- Social Studies Teachers


Session Delivery

- Live Virtual
- Online Course

 **Integrating Science and Literacy with Newsela**

Learn ways to implement Newsela content and features in service of disciplinary literacy practices in science including investigation, discourse, making sense of multiple representations of concepts, and argumentation.


- Explore relevant content on Newsela to offer multiple representations of concepts and phenomena
- Examine how Newsela features can support students with scientific argumentation
- Evaluate and implement instructional resources to integrate elements of disciplinary literacy

 **Best for**

- Science Teachers


Session Delivery

- Live Virtual
- Online Course

 **Implementing Your Newsela Custom Collections**

Explore your Newsela Custom Collection and leverage the content, tools, and teaching resources that have been curated just for you as you plan learning experiences for your students.

- Develop an understanding of your collection structure and essential components
- Experience collection content and lesson activities from the student perspective
- Evaluate educator collection resources to implement your Lesson Guides for active and engaged learning experiences


Best for • All Collection users Teachers
The Newsela Custom Collection license required

Session Delivery


- In Person*
- Live Virtual



Using NWEA Data to Drive Instruction with Newsela

Learn how NWEA and Newsela work together to differentiate texts for students. Explore ways to customize Newsela content based on MAP data to design learning experiences that support student growth.

- Understand how MAP Growth data determines the level of content students see on Newsela
- Learn how Newsela resources and features can provide low stakes practices with instructional areas of focus
- Examine instructional supports and strategies to support skill development and growth


Best for • ELA Teachers
Newsela integration with NWEA MAP Growth required

Session Delivery

- Live Virtual
- Online Course

Ongoing Professional Learning for Experienced Users | Section 2 Notes:

Sessions for Administrators and Instructional Leaders

Empower district leaders and facilitators to support Newsela implementation and advance usage in alignment with your goals. Schedule the session or service that best fits your audience.

Train the Trainer Options


Build a cohort of district-based facilitators to plan and deliver training personalized to your internal needs and goals.



Train the Trainer: Newsela Foundations

Prepare to lead a Newsela training at your district that introduces educators to the relevant content resources and interactive features available on Newsela to support student engagement and learning.

- Learn best practices for introducing Newsela to new users and supporting account and class creation
- Explore ways to find and customize content on Newsela to support student engagement
- Evaluate and adapt resources to lead a training for your educators to support Newsela implementation

 **Best for**

- Coaches
- Administrators

Session Delivery

- Live Virtual



Train the Trainer for Instructional Leaders: Advancing Instructional Approaches with Newsela

Prepare to lead a Newsela training for your team that supports educators in deepening their understanding of Newsela and models approaches for intentionally incorporating the content and features into their instruction to support district priorities.

- Learn best practices for applying Newsela features to tailor activities to student needs
- Explore strategies for designing engaging and differentiated learning experiences for students
- Evaluate and adapt resources to lead a training for your educators to support Newsela implementation

 **Best for**

- Coaches
- Administrators

Session Delivery

- Live Virtual



Train the Trainer: Aligning to Subject-Area Priorities with Newsela

Prepare to lead a Newsela training for departments in your district that helps educators plan standards-aligned lessons with Newsela content to build key concepts and skills alongside literacy in the subject-area disciplines.

- Learn how Newsela content and formative assessment activities can support subject-area skills and standards
- Explore planning approaches to incorporate Newsela resources to complement existing curriculum and frameworks
- Evaluate and adapt resources to lead a training for your educators to support Newsela implementation



Best for

- Administrators
- Coaches
- ELA, Social Studies, Science

Session
Delivery

- Live Virtual

Professional Learning Sessions

Provide your administrators and coaches the support they need to advance Newsela usage across your district.



Maximizing Newsela at Your Schools

Learn about administrator actions that can support teachers in their intentional use of Newsela.

- Learn more about your subscriptions and the data and insights you have access to.
- Understand how your teachers are currently using Newsela to achieve your goals.
- Make a plan to support your teachers in meeting district and campus-wide goals.



Best for

- Coaches
- Administrators

Session
Delivery

- Live Virtual



Scaffolding Instruction with Newsela*

Learn about the tools within Newsela that can be used to scaffold instruction and provide meaningful feedback to students.

- Define scaffolding and differentiation and how they are different.
- Identify how Newsela can be leveraged to address academic gaps.
- Make a plan to support teachers in identifying academic gaps and building scaffolds to address them.

 **Best for**

- Coaches
- Administrators

Session Delivery

- Live Virtual


Delivered in partnership with BetterLesson



Meaningful Tech Integration with Newsela*

Learn about different strategies to meaningfully incorporate technology, including Newsela, into instruction.

- Define meaningful and authentic technology integration at your district.
- Use the SAMR model to plan for strategic use of Newsela.
- Create learning tasks that align to your vision for strategic use of Newsela.

 **Best for**

- Coaches
- Administrators

Session Delivery

- Live Virtual

Delivered in partnership with BetterLesson


**Offered in partnership with BetterLesson. Professional Learning Sessions are capped at 30 participants and will require an additional Newsela session credit if attendance goes over that number. Reach out to your Customer Success Manager to schedule.*



Implementing Literacy Practices for Administrators, Part 1: Analysis and Inventory

Dive into your current ELA resources, including Newsela, to evaluate how you are meeting statewide ELA standards.

- Complete a SWOT (strengths, weaknesses, opportunities and threats) analysis to reflect on your inventory of ELA resources.
- Evaluate current capacity to meet your state ELA standards.
- Set a vision for a culture of literacy in your district

 **Best for**

- Coaches
- Administrators

Session Delivery

- Live Virtual


Delivered in partnership with Equitable Literacy



Implementing Literacy Practices for Administrators, Part 2: The Science of Implementation

In this session, reflect on your current ELA resources and develop a plan to support your implementation that aligns to your state ELA standards. *(Participants must attend Part 1 in order to schedule this session offering)*

- Plan for progress monitoring of Newsela to achieve your goals.
- Develop a walkthrough tool to monitor and support teachers in their implementation of Newsela.

 **Best for**

- Coaches
- Administrators

Session Delivery

- Live Virtual

Delivered in partnership with Equitable Literacy

Coaching Services


Receive 1:1 support to build capacity among your internal champions and refine their instructional and leadership skills.



1:1 Virtual Coaching for Administrators and Instructional Leaders

Personalized, 1:1 support from expert coaches to build and sustain instructional leadership skills through the Try-Measure-Learn method. 1:1 coaching for leaders builds internal capacity to become a Newsela expert who can support all teachers.

- Short Cycle (3 sessions per person)
- Half year (9 sessions per person)
- Full year (18 sessions per person)

 **Best for**

- Coaches
- Administrators

Session Delivery

- Live Virtual 30 minute sessions

**Offered in partnership with BetterLesson. Reach out to your Customer Success Manager to schedule.*

Sessions for Administrators and Instructional Leaders | Section 3 Notes:



Thank you.