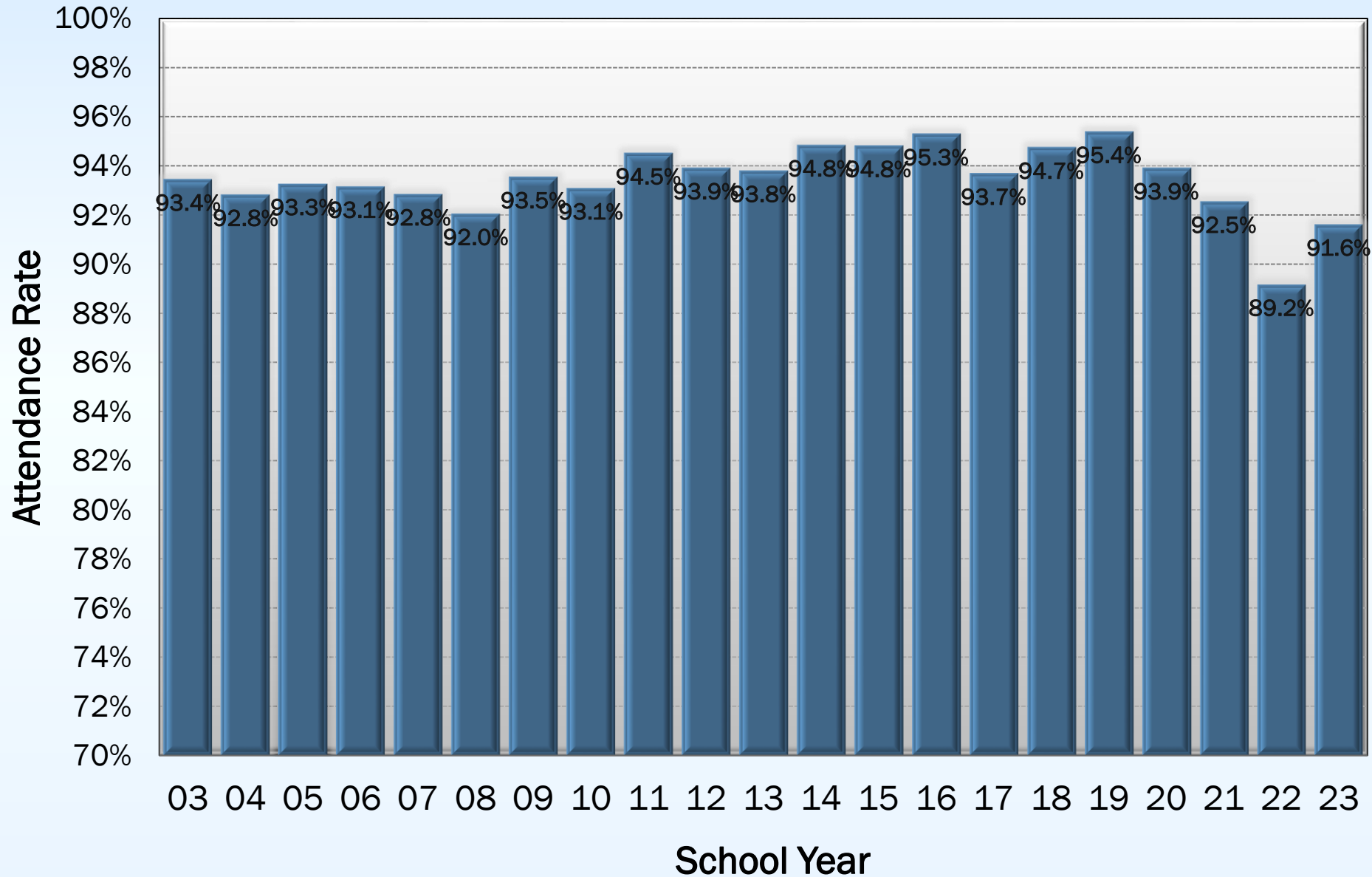


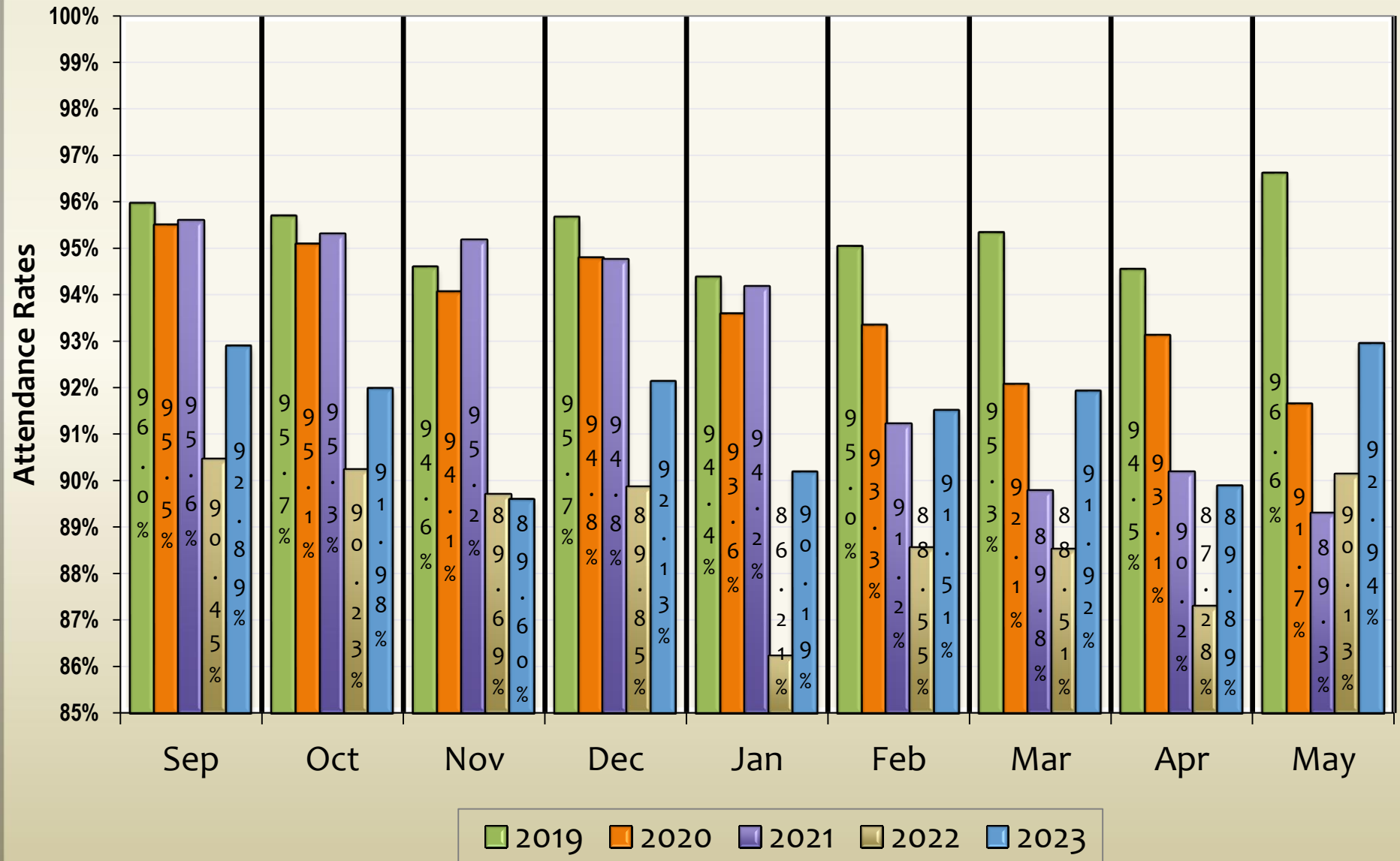
Attendance

{ 2022-2023

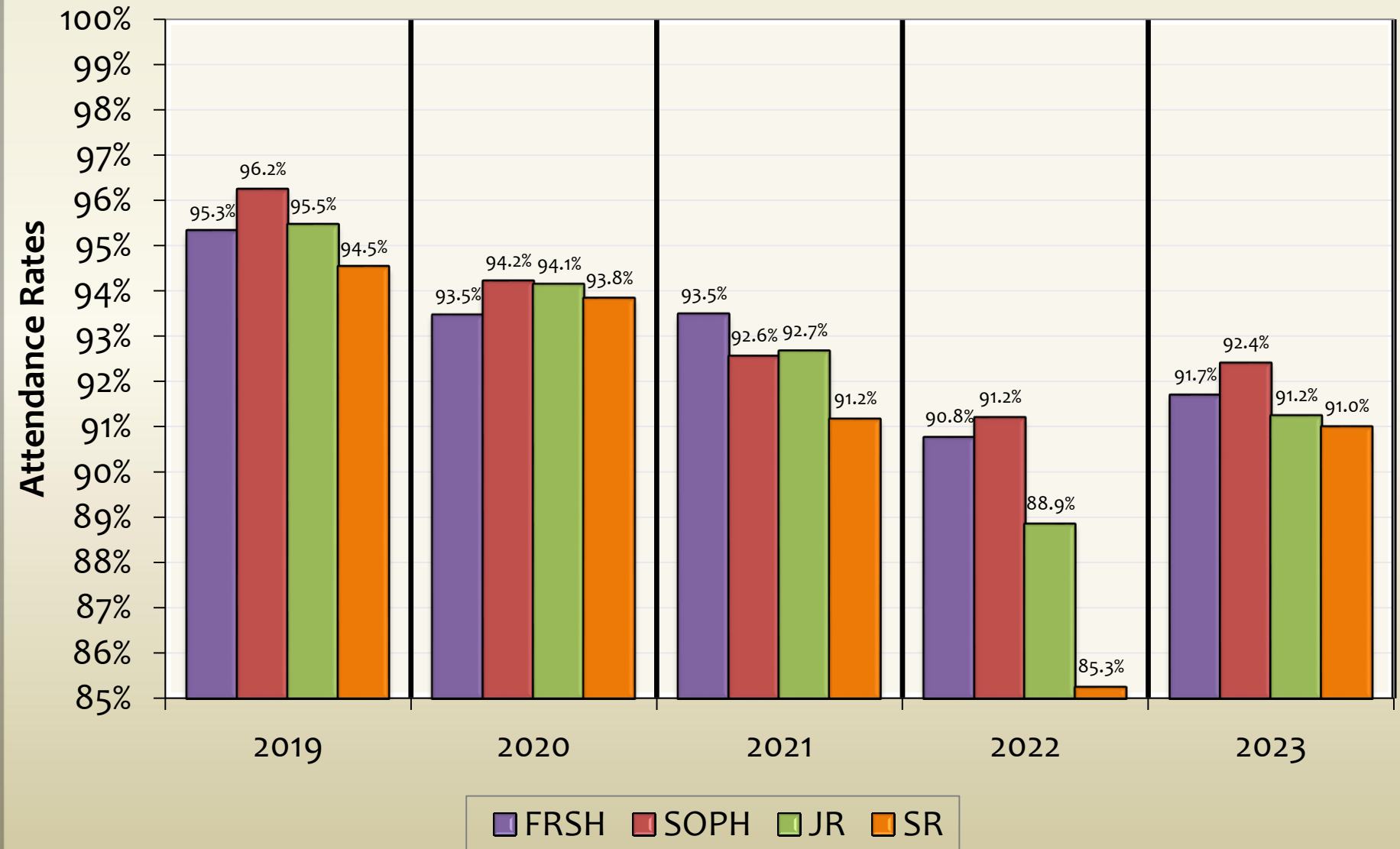
Annual Attendance Rates by School Year



Students Monthly Attendance

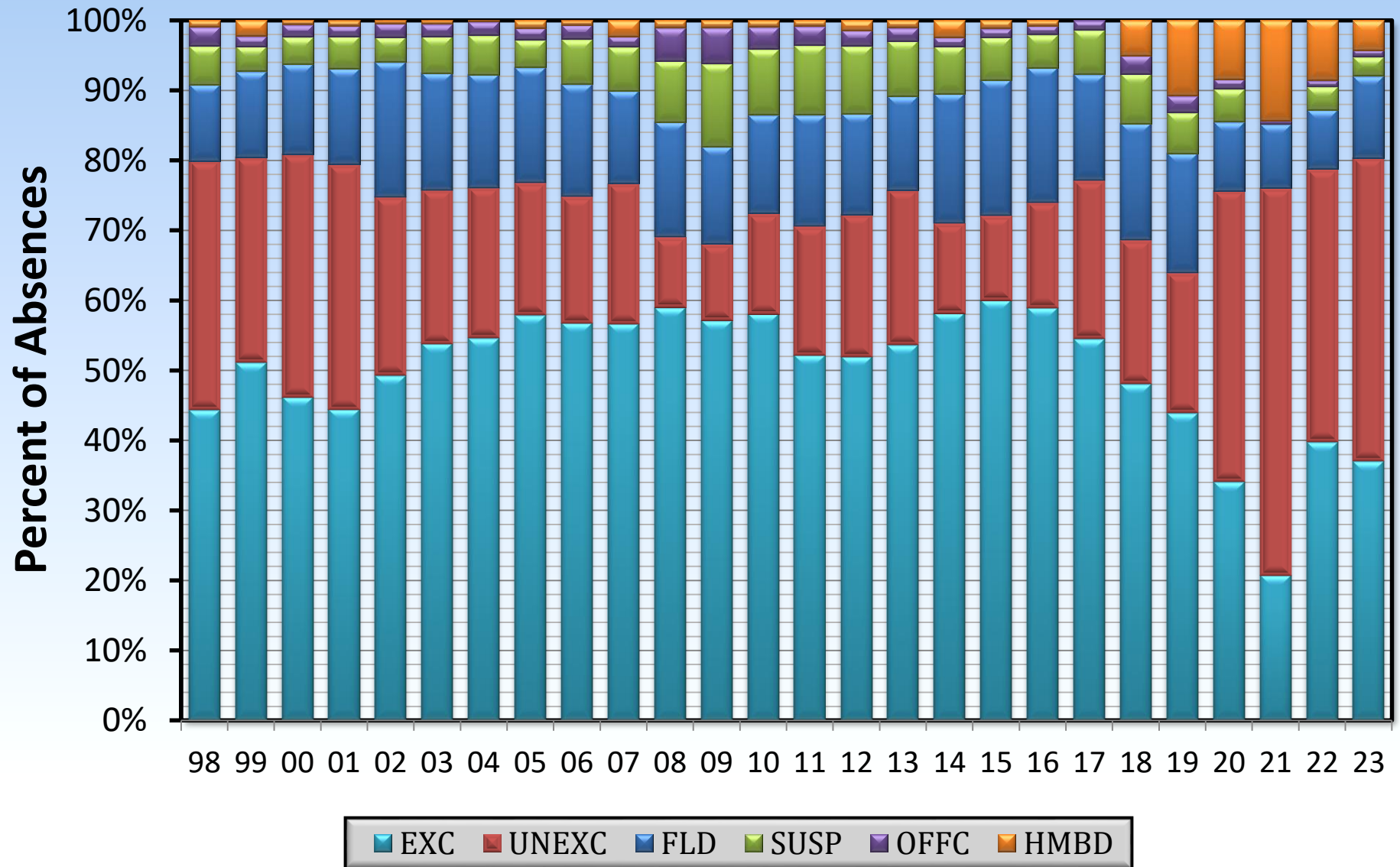


Attendance Rates by Grade level



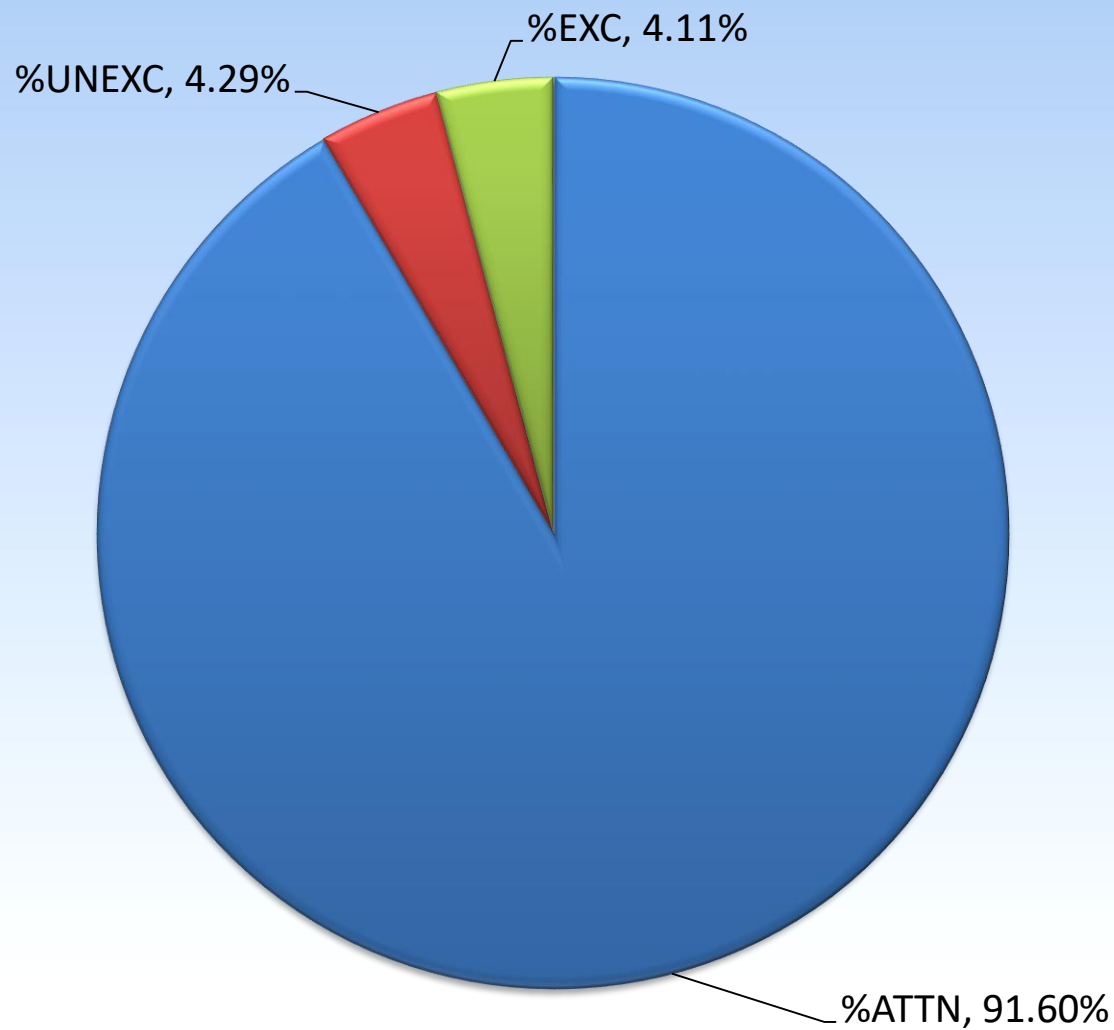
Absence Codes by School Year

Percent of Codes by Year



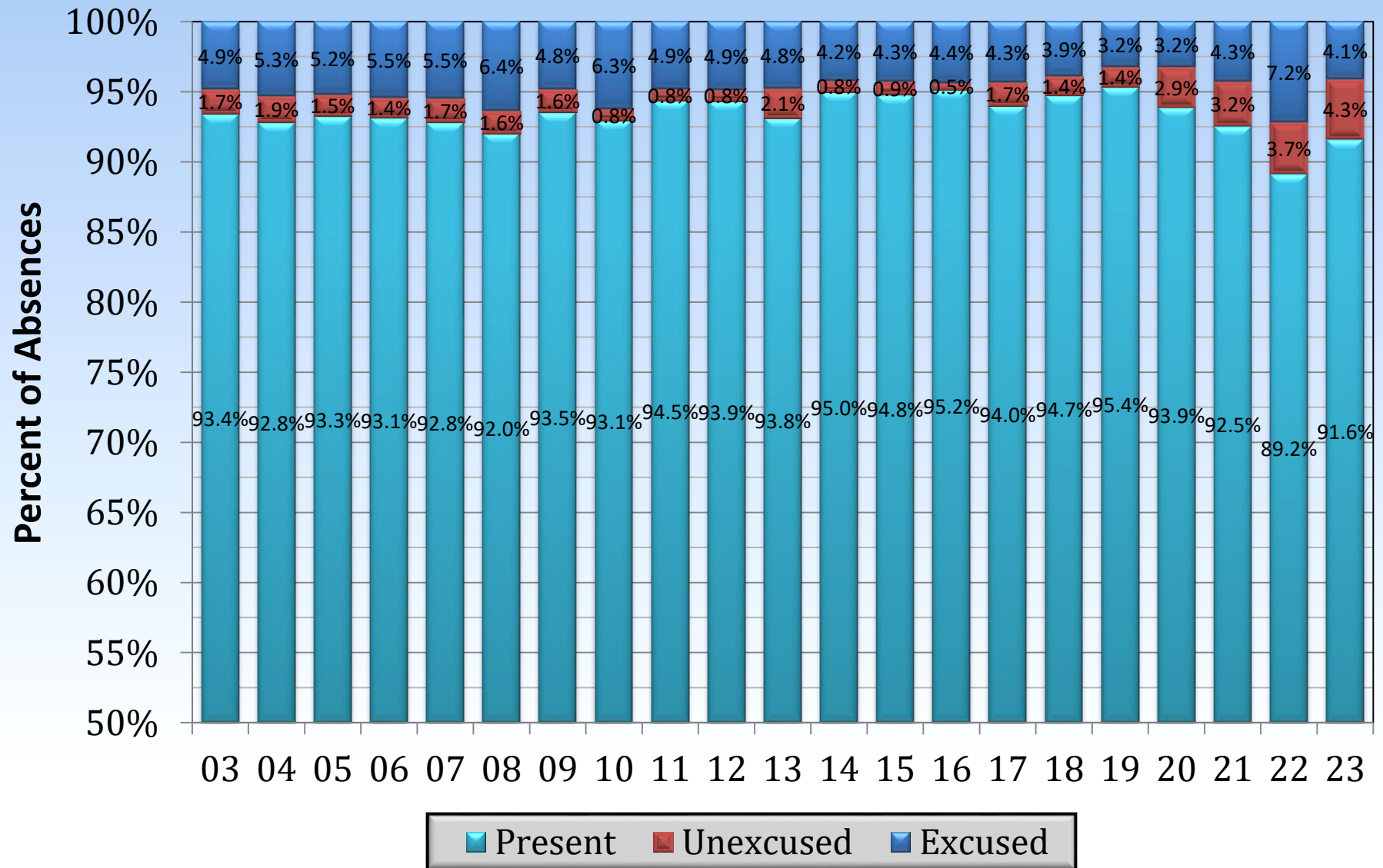
Attendance Rate for District 94

School Year 2022/23



Attendance by School Year

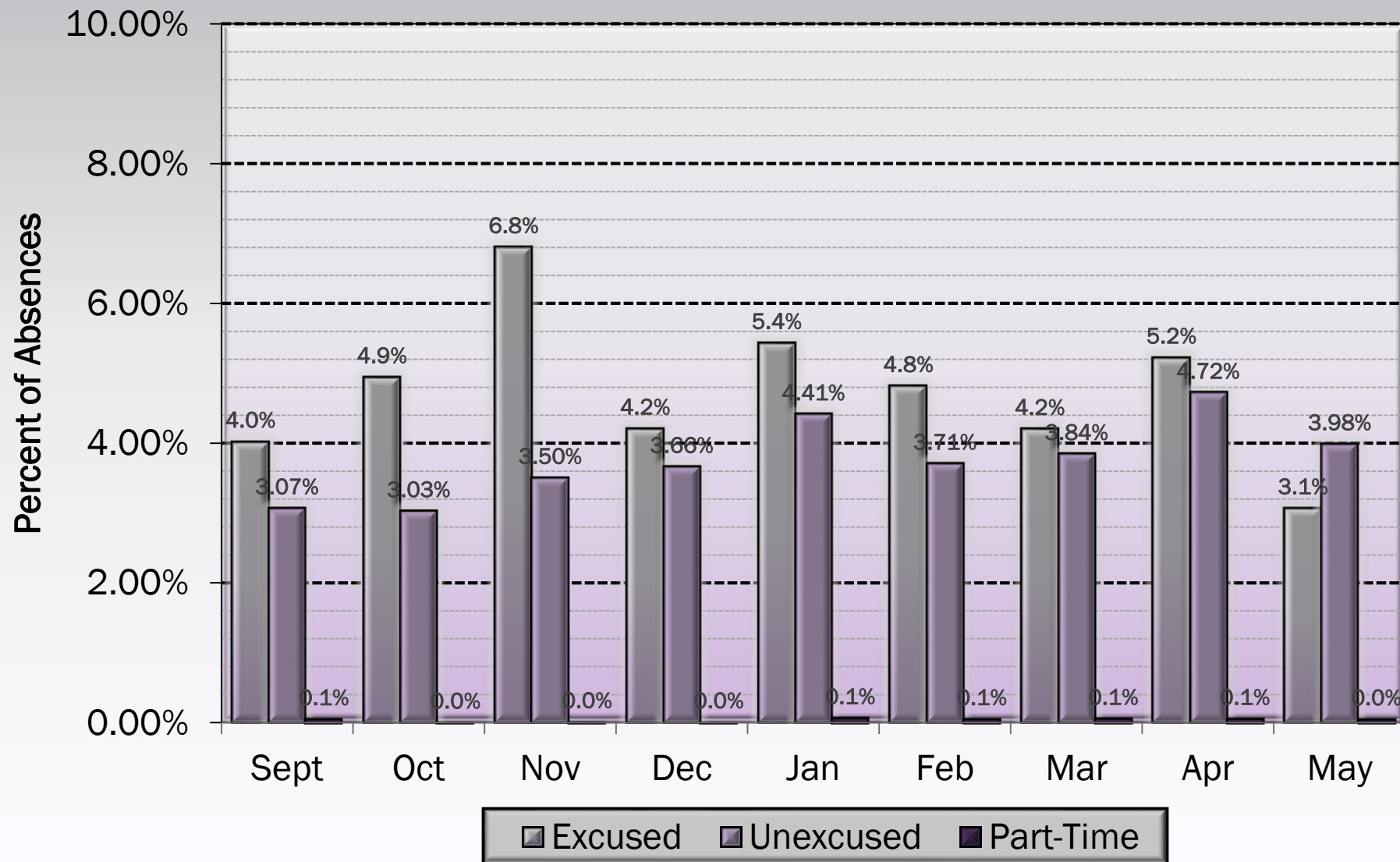
Excused vs. Unexcused



Absence Reason Code Summary

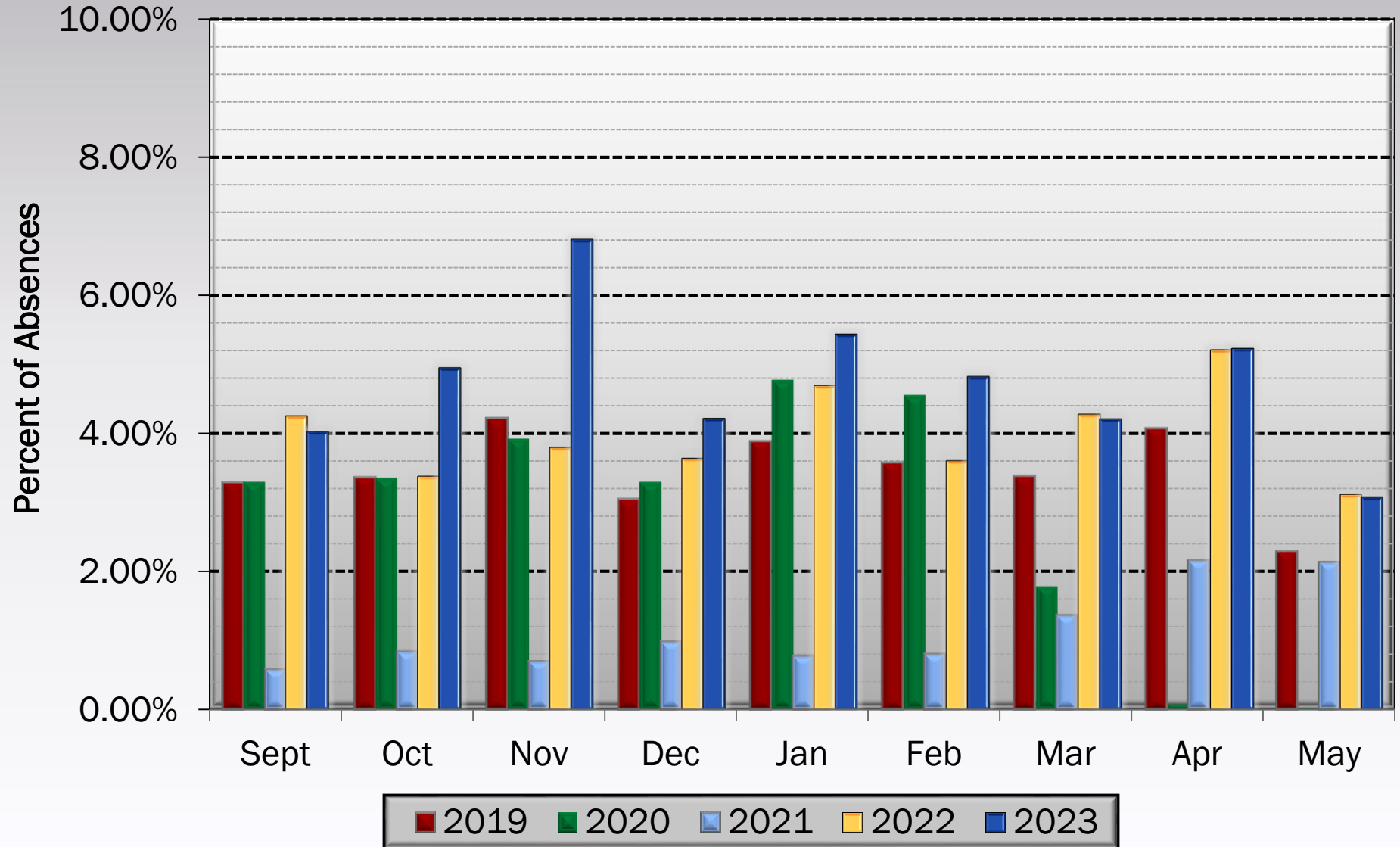
School Year 2022/2023

(Excused, Unexcused and Part-Time)



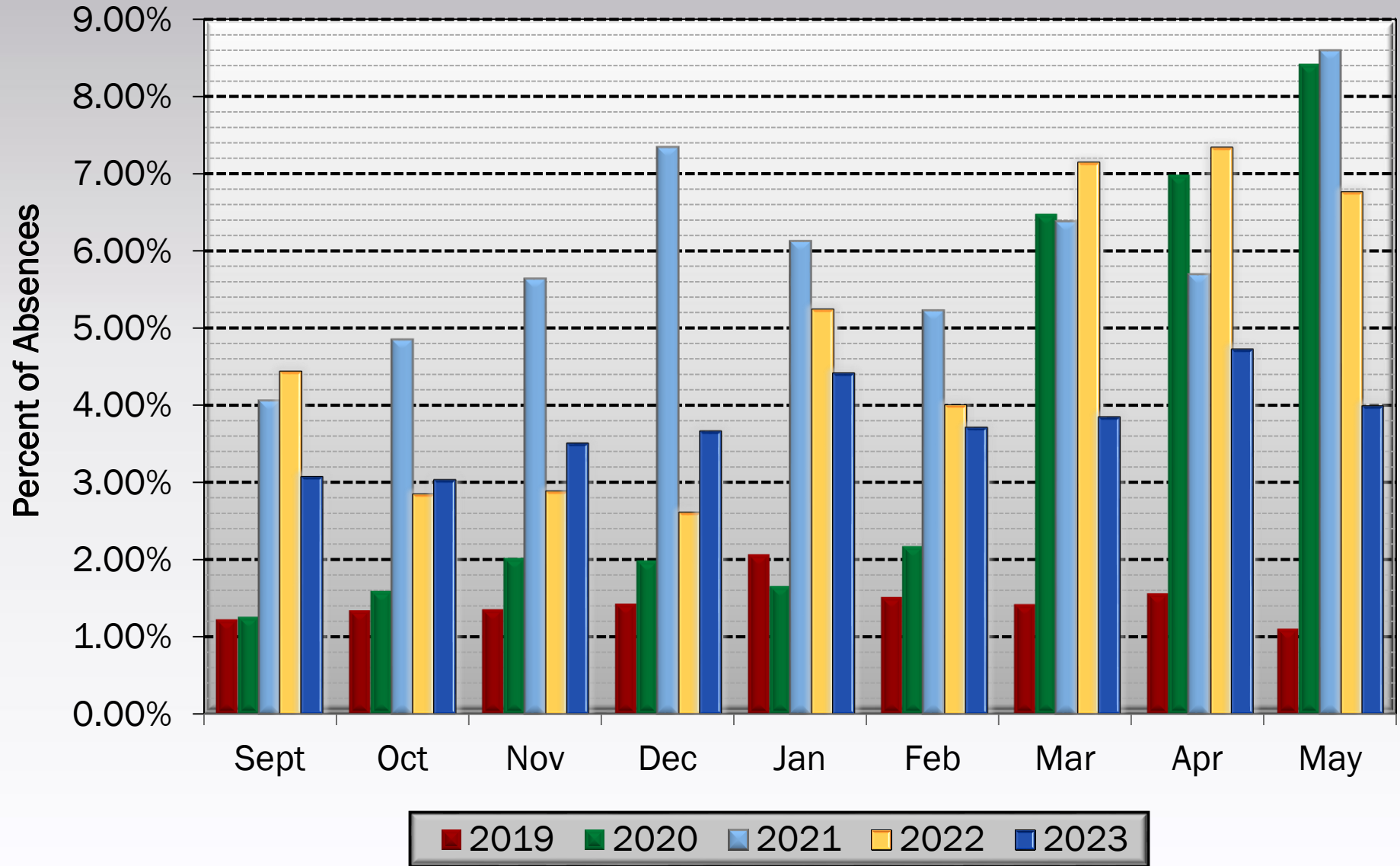
Absence Reason Code Summary

Excused Absences



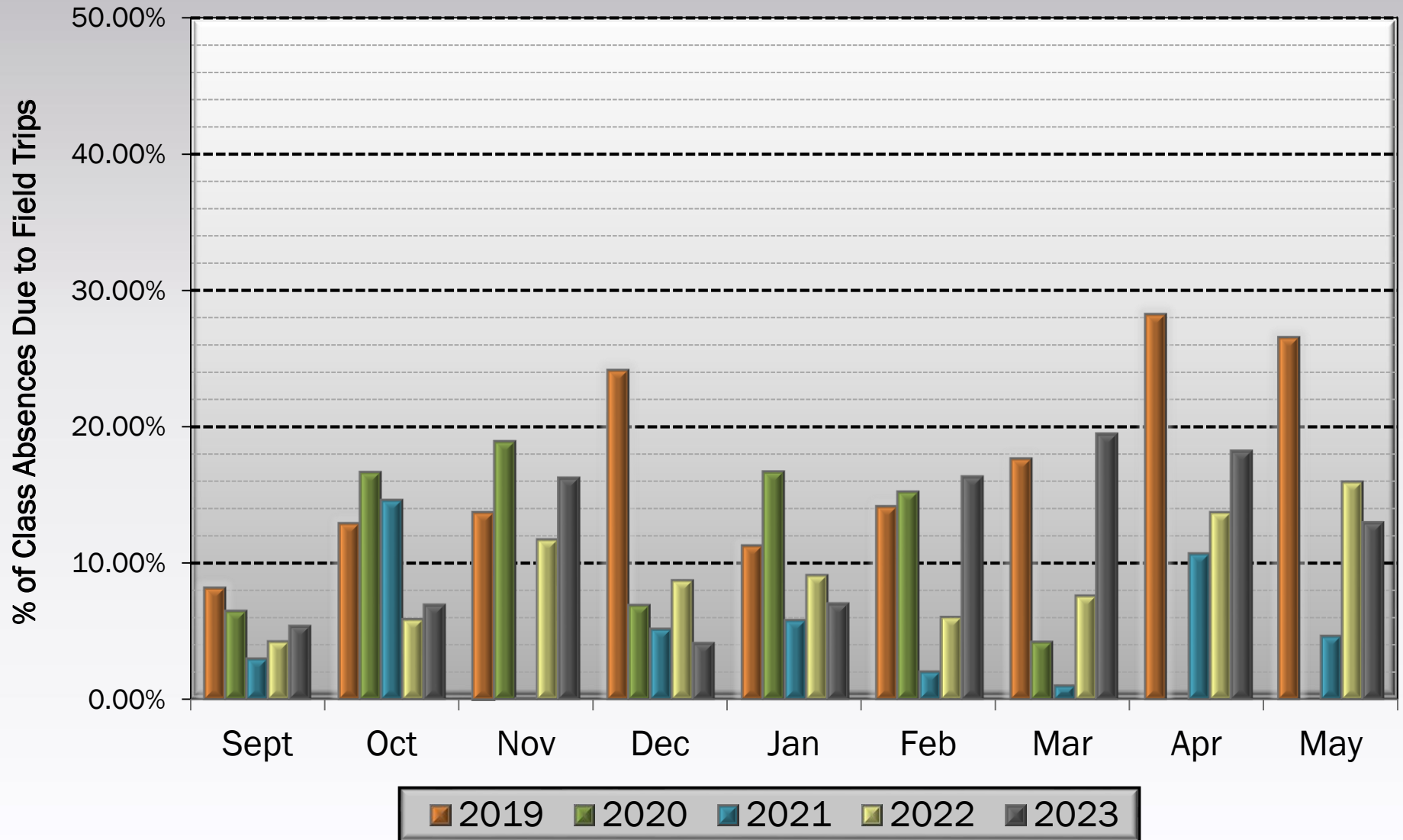
Absence Reason Code Summary

Unexcused Absences



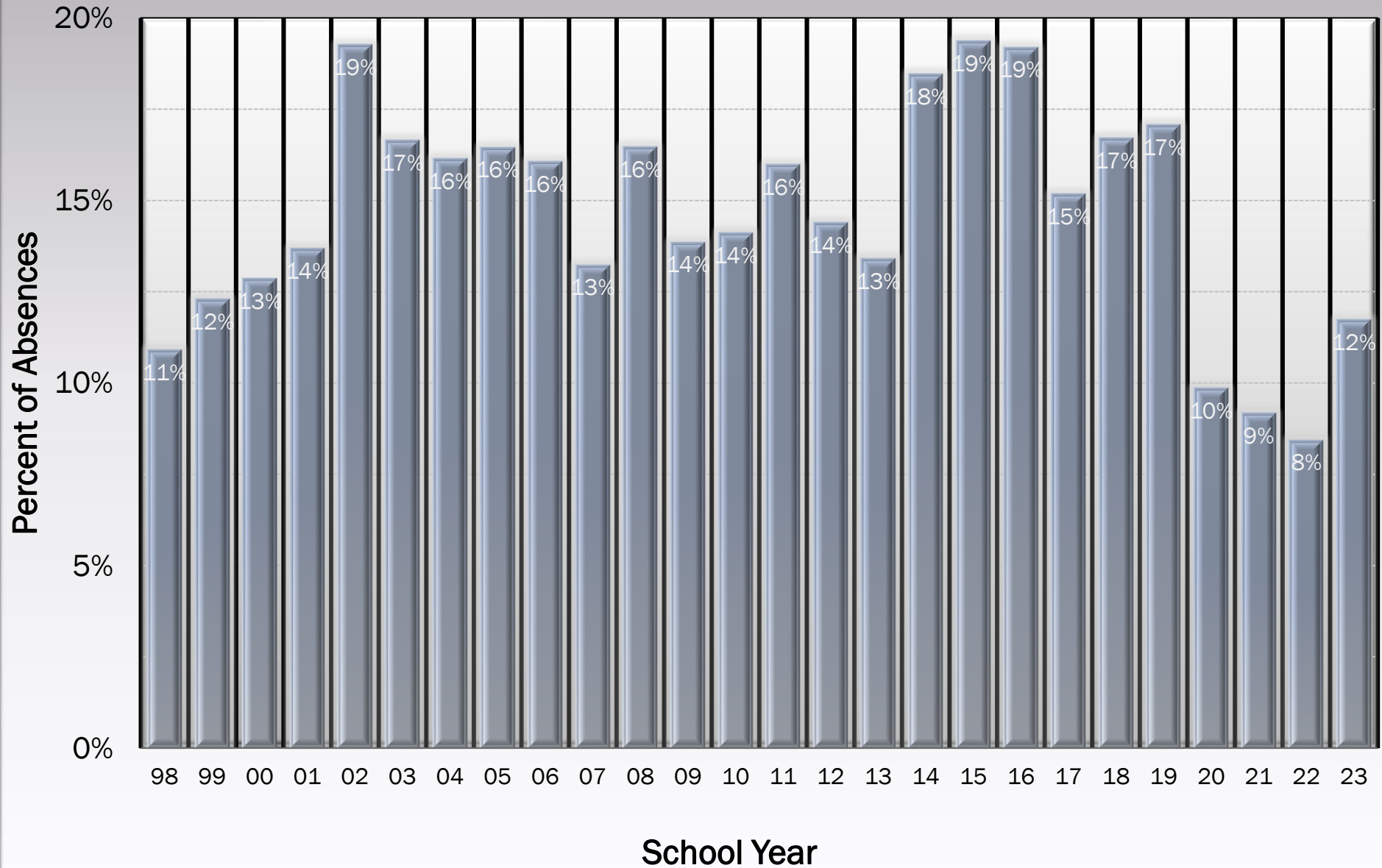
Field Trip Codes by Month

% of Class Absences Due to Field Trips



Percent of Absences Due to Field Trips

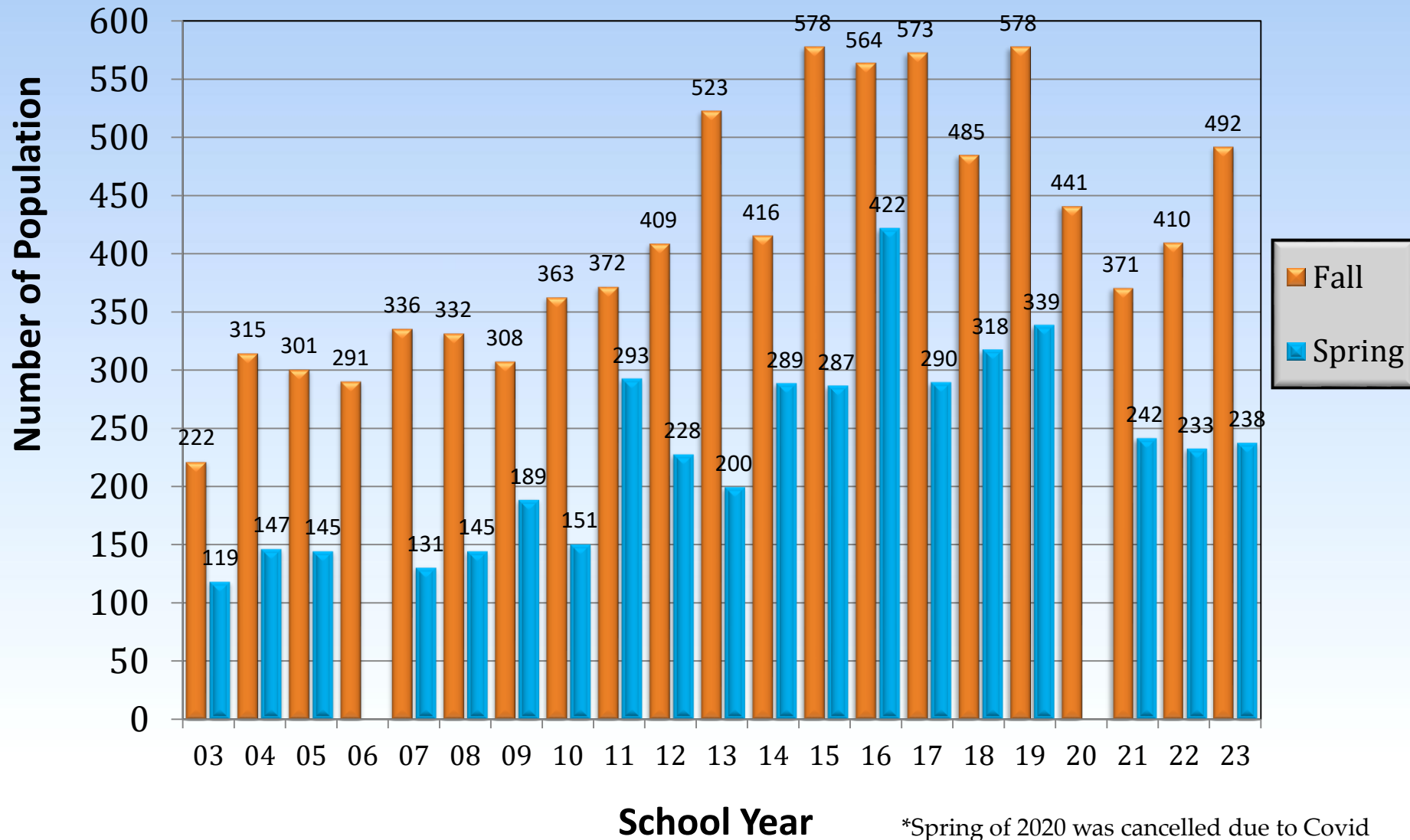
By School Year



Parent Teacher Conferences

Number of Population

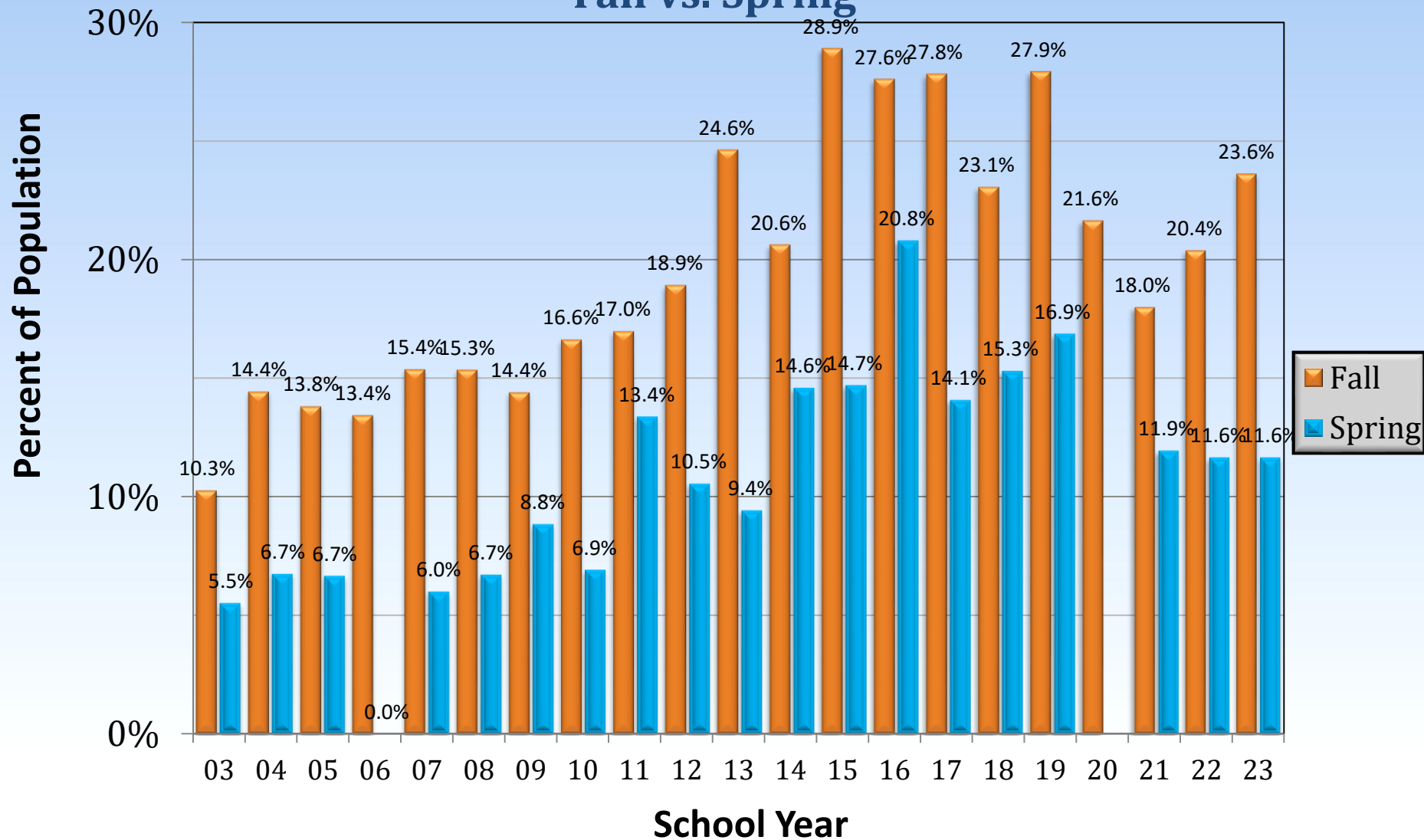
Fall vs. Spring



Parent Teacher Conferences

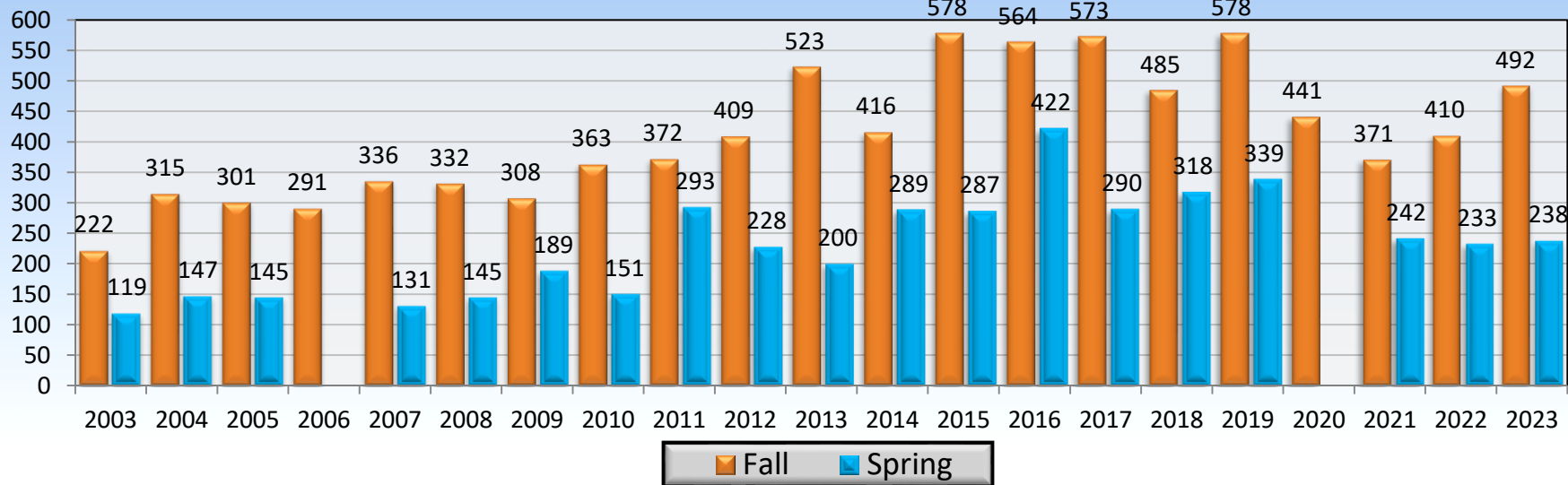
Percent of Population

Fall vs. Spring



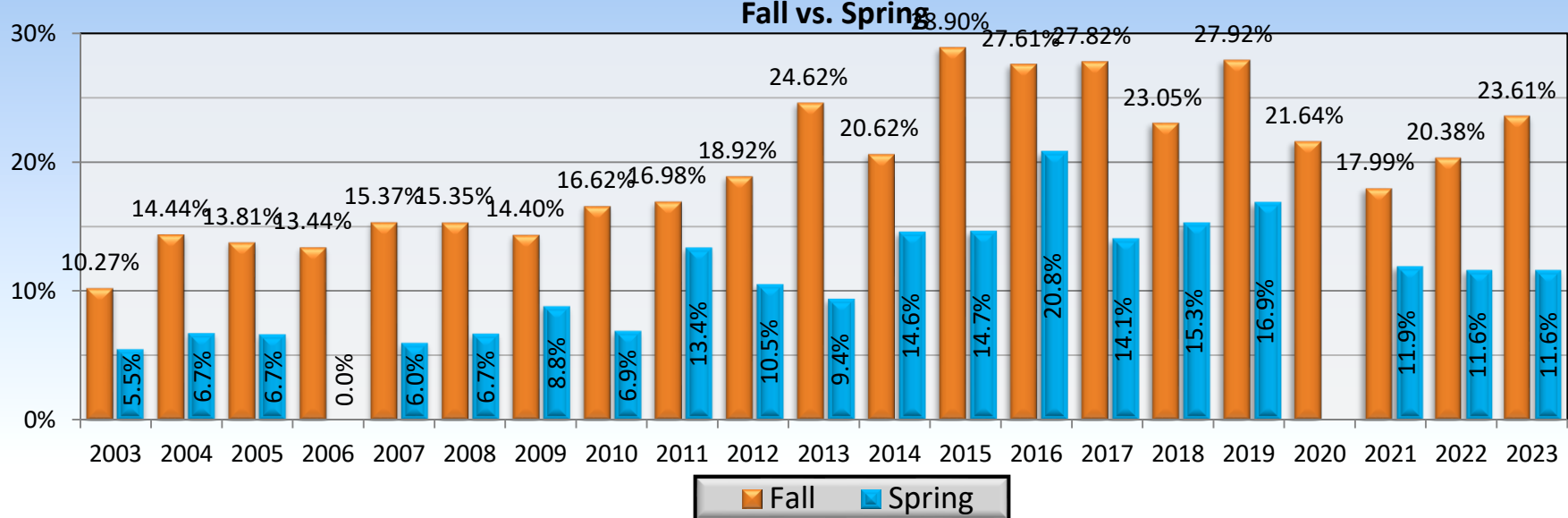
Number of Population

Parent Teacher Conferences Number of Population Fall vs. Spring

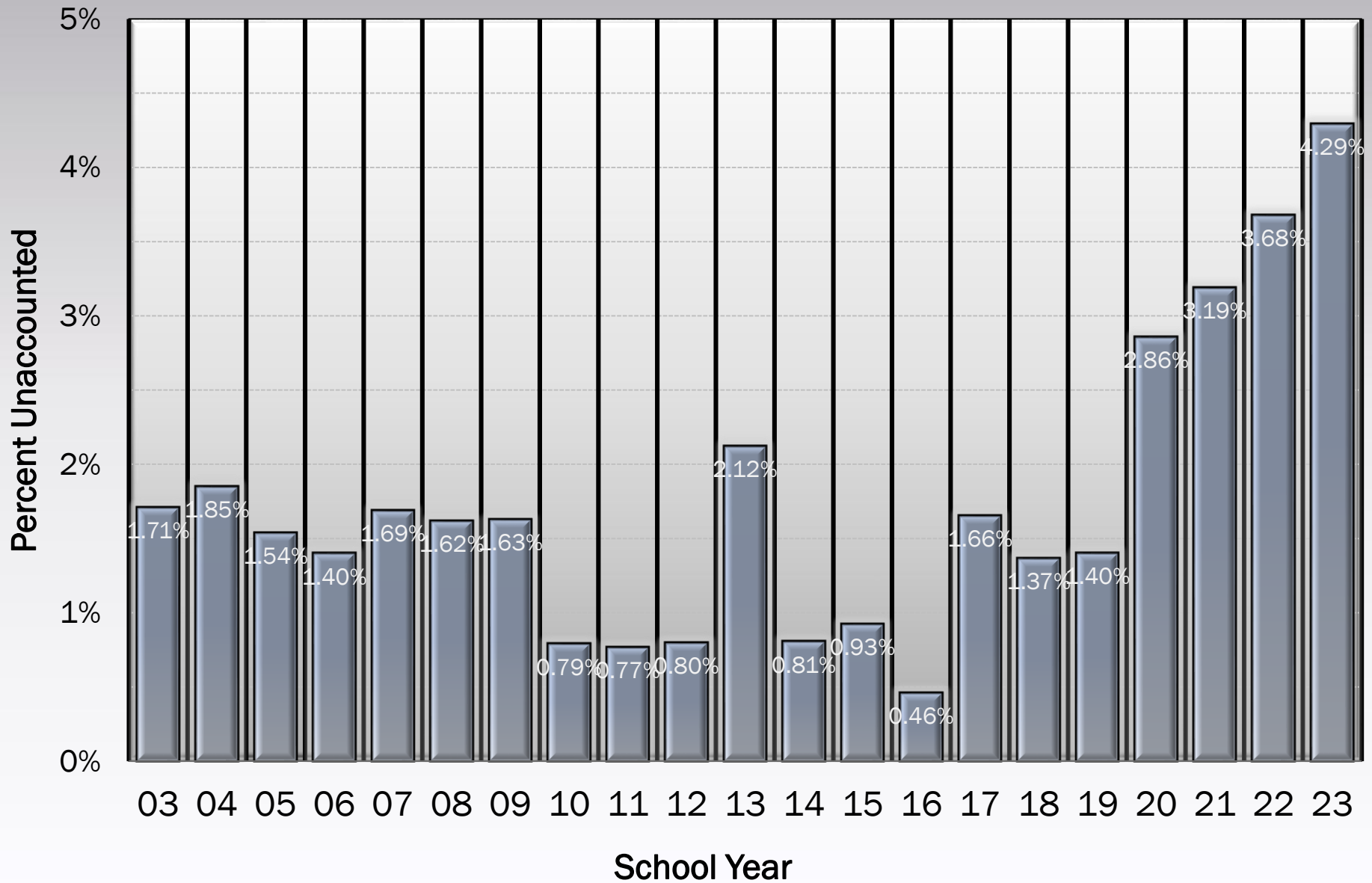


Percent of Population

Parent Teacher Conferences Percent of Population Fall vs. Spring



Unaccounted Rate by School Year

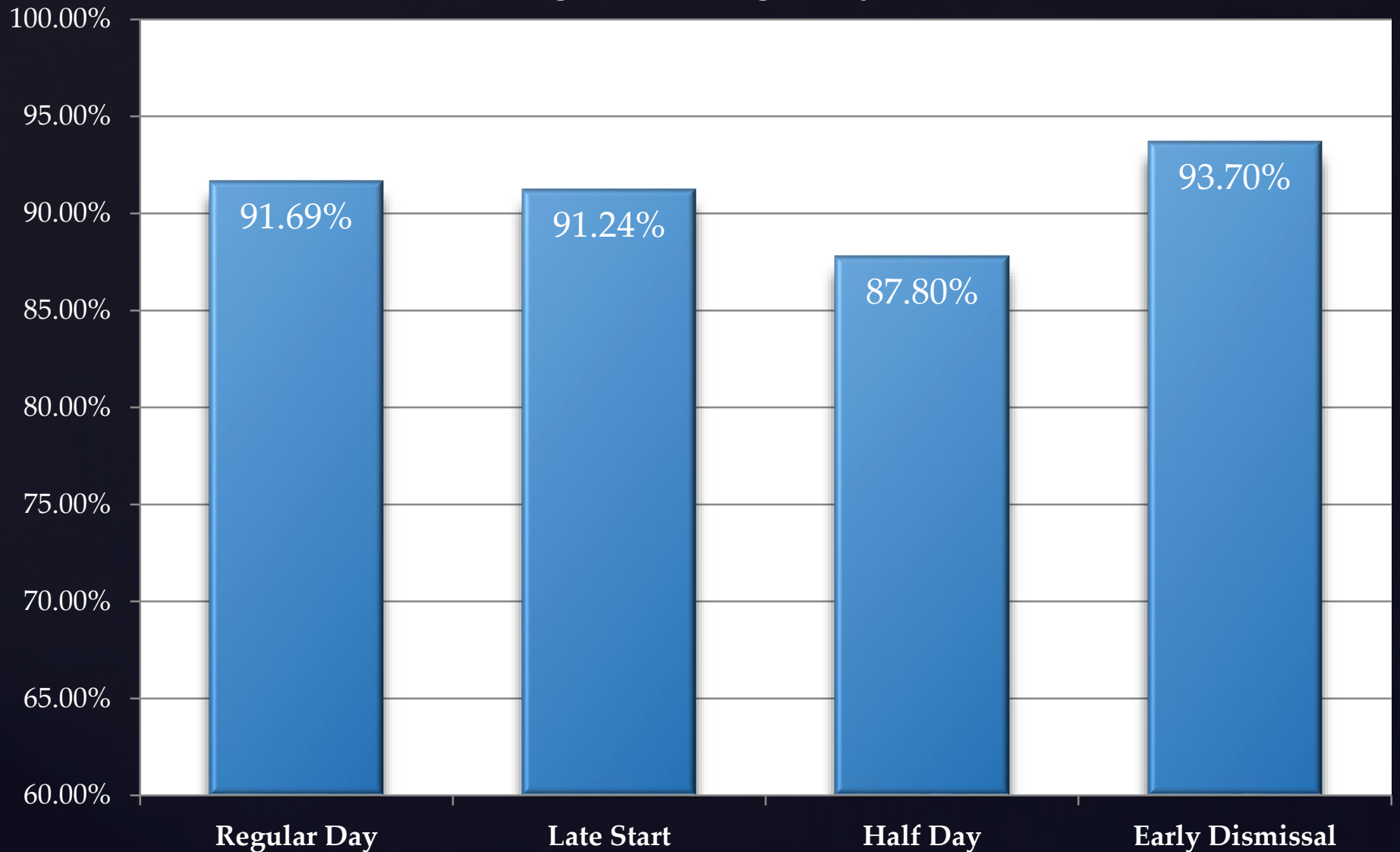


August 2022 through May 2023



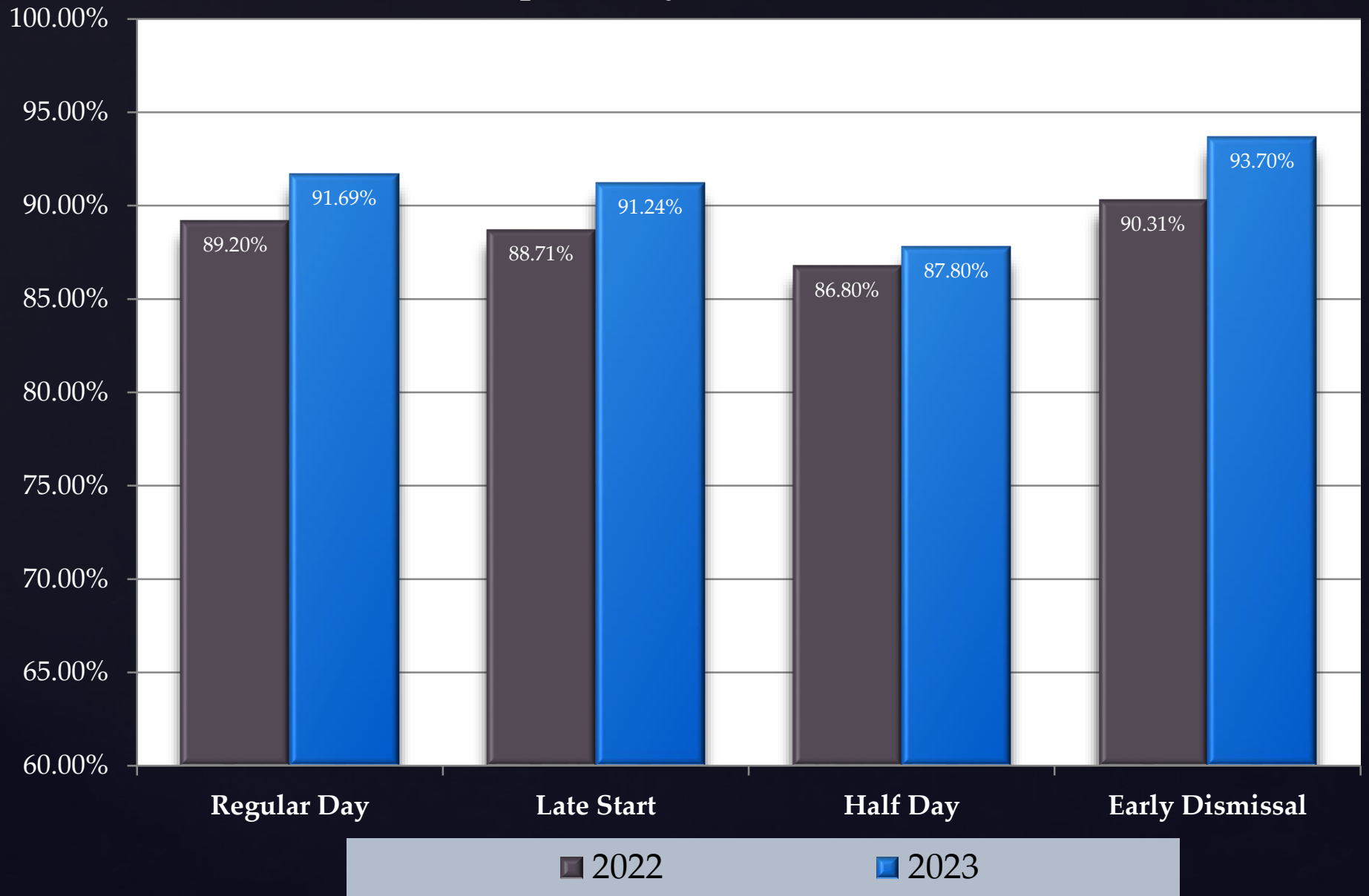
Attendance Rate by Type of Day

Aug 2022 through May 2023



Attendance Rate by Type of Day

Special days – 2022 vs 2023



Absence by Type 2022/2023

Percent of All Codes

