

School Capacity and Utilization Task Force

Meeting #6

November 30, 2023

School Capacity & Utilization Task Force

Meeting #6

November 30, 2023, 5-7 p.m.

Karshner Center – 309 4th St NE Puyallup, WA 98372

Welcome/Introduction

- Welcome - Review / Approve Meeting #5 Minutes

Recap Meeting #5

- Summary of Region 2 Discussion

Region 3 Introduction

- Schools & Programs in Region 3
- School Capacity & Enrollment information

North Hill Grade Configuration

- Presentation by Dr. Mark Knight, Principal, Edgemont Junior High

Break (5 min.)

Characteristics of Region 3

- Ranked Building Condition
- Puyallup High School Library Science Building Closure
- Size and Age of School Buildings

Closing / Survey Question



Next Meeting

Meeting #7

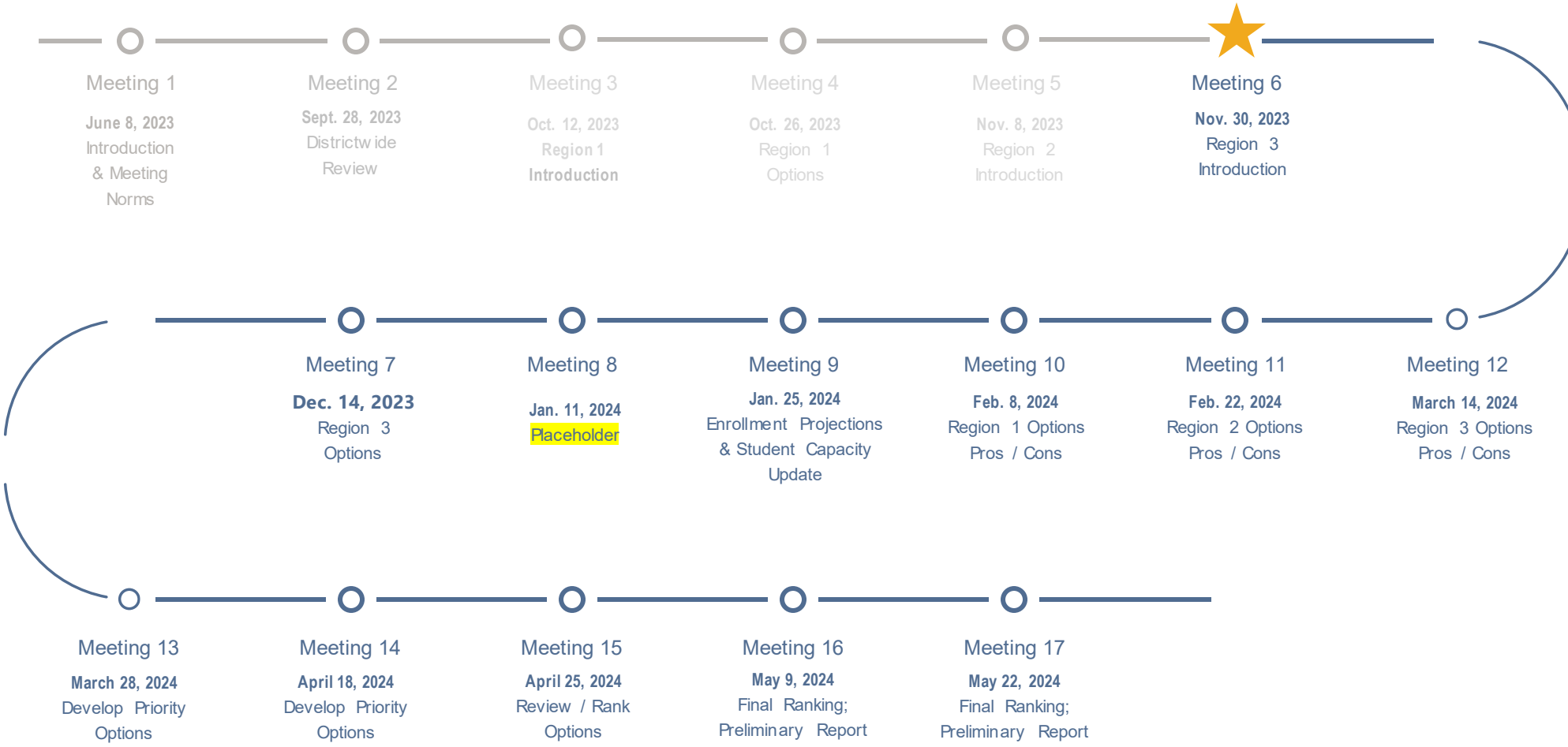
December 14, 2023, 5-7pm

Karshner Center – 309 4th St NE, Puyallup, WA 98372

REVIEW / APPROVE MEETING #5 MINUTES

- Meeting Minutes are emailed with upcoming meeting agenda
- Minutes are available on the MS TEAMS School Capacity and Utilization Task Force page.

Meeting Roadmap



A photograph of three students sitting at a table in a classroom, focused on their work. The student in the center is a young woman with her hair in a bun, wearing a dark jacket. The student to her right is a young man with dark hair, wearing a white shirt. The student to the left is partially visible, wearing a dark jacket with a logo. They are all looking down at papers on the table. In the background, a sign on the wall reads "Work Day". The entire image has a dark blue overlay.

Recap Meeting #5

Meeting #5 – Recap Learning Targets

- ✓ Be able to identify schools and programs in Region 2.
- ✓ Identify which schools in Region 2 will be challenged, if any, to serve enrollment growth from new housing.
- ✓ Be familiar with school board policy regarding waivers/transfers.
- ✓ Learn how to read the Attendance Matrix worksheets.
- ✓ Understand differences between Regions 1 and 2.

Meeting #5 – Survey Results

What differences have you noticed between region 1 and region 2?

Much more out of district waivers.
Growth & waivers
Growth
Carson seems like they have some space or will have.
Region 2 is not in as dire an overpopulation situation as Region 1
Less capacity issues in region 2 than 1
Not as much growth
Region 1 growth due to new housing vs. Region 2 growth due to out of district transfers
Growth higher in 1 than 2
New growth is much higher in region 1.
Waiver and transfers. Growth patterns
Less new housing, more stability over the next 8 years to be able to house students.
Region 2 does not have as much of a concern with exceeding capacity.
That there are a lot of non residents students, and still more in project to come for the next school year.

7 respondents (50%) answered **Growth** for this question.



What type of food would you prefer for dinner at future



School Board Policy 3132 & 3132R

District-Initiated Student Transfers

“In those cases where estimated enrollments exceed the District’s capacity to provide for adequate classroom space, facilities and staff, student transfers may be implemented by the Superintendent in order to operate an effective and efficient educational program during the current year.

When fall enrollments in an attendance area substantially exceed the District’s capacity to provide for adequate classroom space, facilities and staff, students may be required to attend a school in another attendance area.

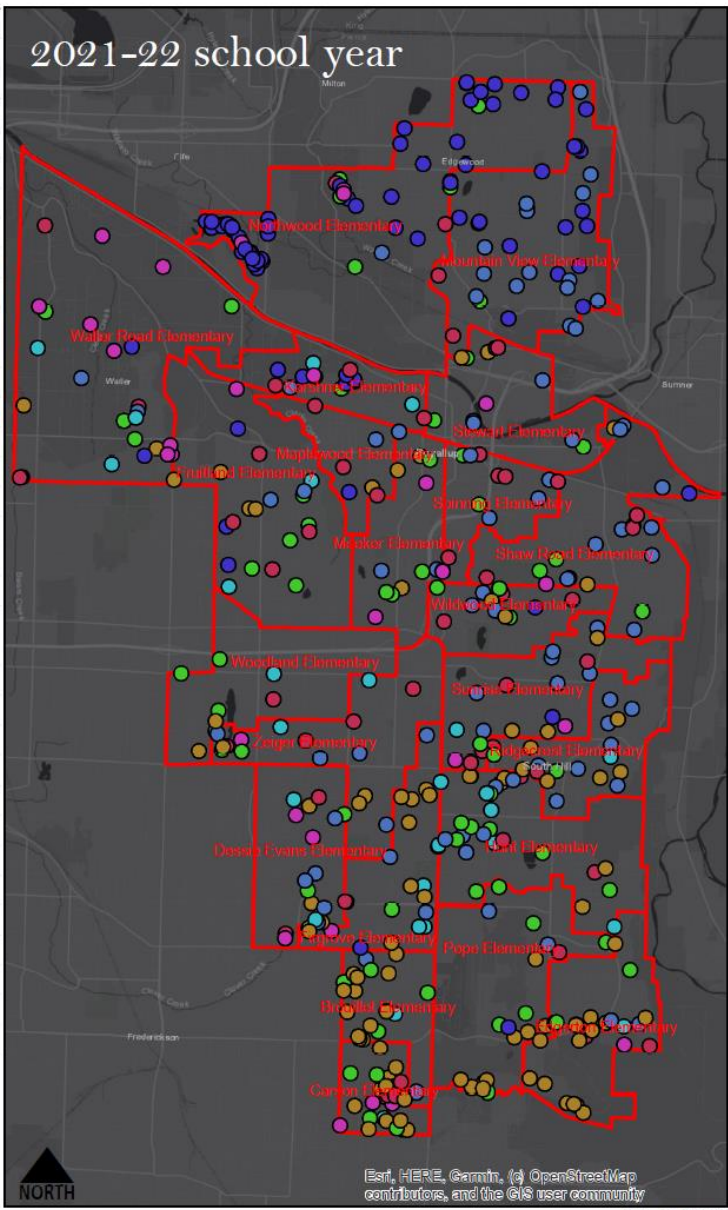
The District will provide transportation for students transferred by the District.”

Release of PSD Resident Students by Requested District



Resident Students Released from Puyallup SD

# of Students	District Requested
149	Bethel School District
149	Fife School District
139	Sumner School District
118	Omak School District
60	Quillayute Valley School District
52	Tacoma School District
42	Franklin Pierce School District
39	Goldendale School District
31	Auburn School District
29	Federal Way School District
29	Mary M Knight School District
28	Valley School District
26	Quilcene School District
24	Clover Park School District
20	South Kitsap School District
14	Toppenish School District
12	White River School District
8	Renton School District
7	Kettle Falls School District
7	Orting School District
7	Starbuck School District
5	Highline School District
4	Tahoma School District
4	University Place School District
3	Dieringer School District
3	Eatonville School District
3	Enumclaw School District
2	North Thurston Public Schools
2	Seattle Public Schools
2	Yelm School District
1	Kent School District
1	Orcas Island School District
1	Steilacoom Hist. School District
1021	TOTAL



Legend

- Release To:**
- Franklin Pierce School District
 - Sumner School District
 - Bethel School District
 - Omak School District
 - Fife School District
 - Tacoma School District
 - Quillayute Valley School District
 - Elementary school boundary

A photograph of several students sitting at a desk in a classroom, focused on their work. The image is dimmed with a blue overlay. The students are wearing dark jackets, and one student in the foreground is wearing a white shirt. They appear to be writing or reading papers.

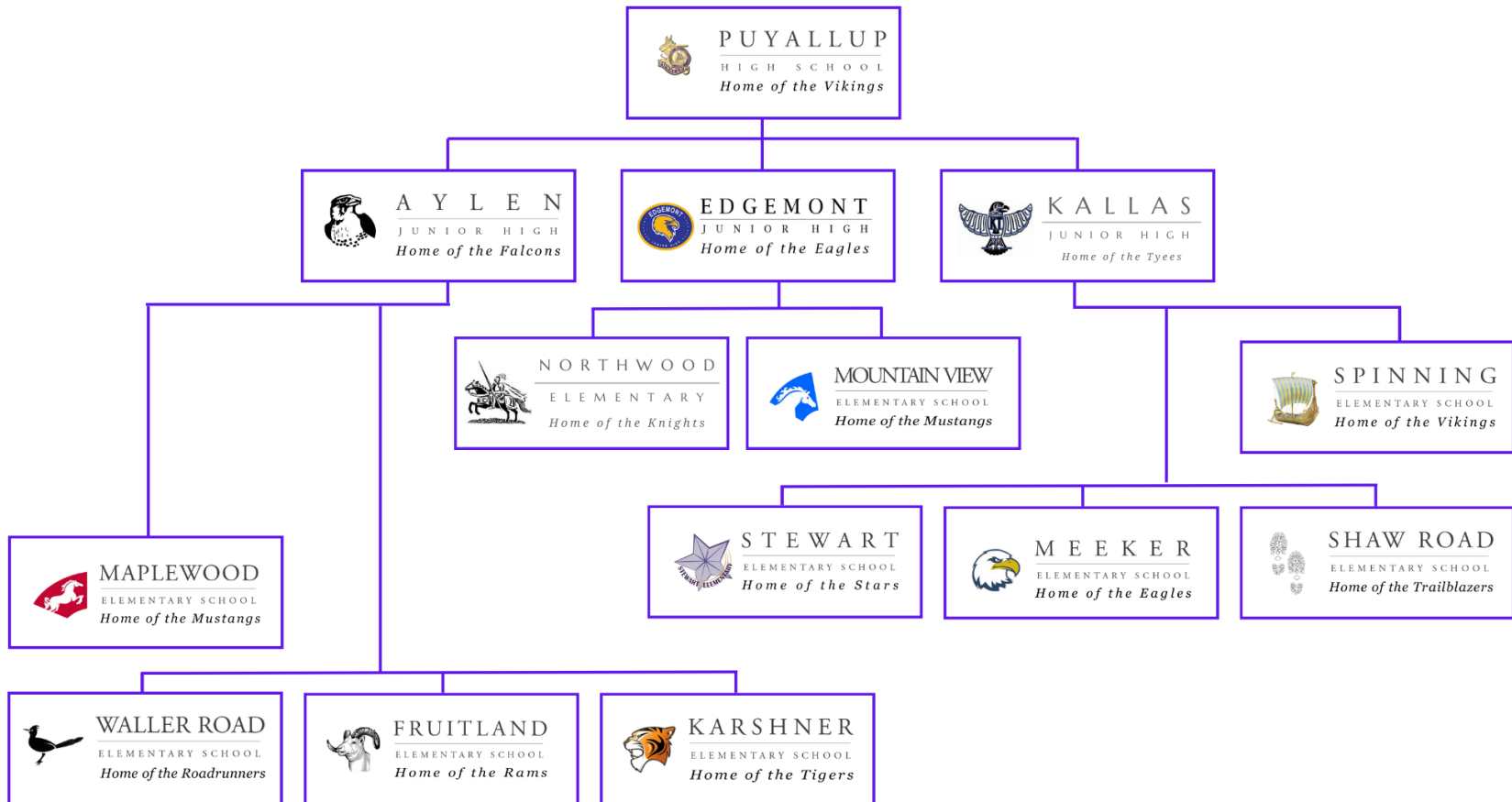
Region 3 Introduction

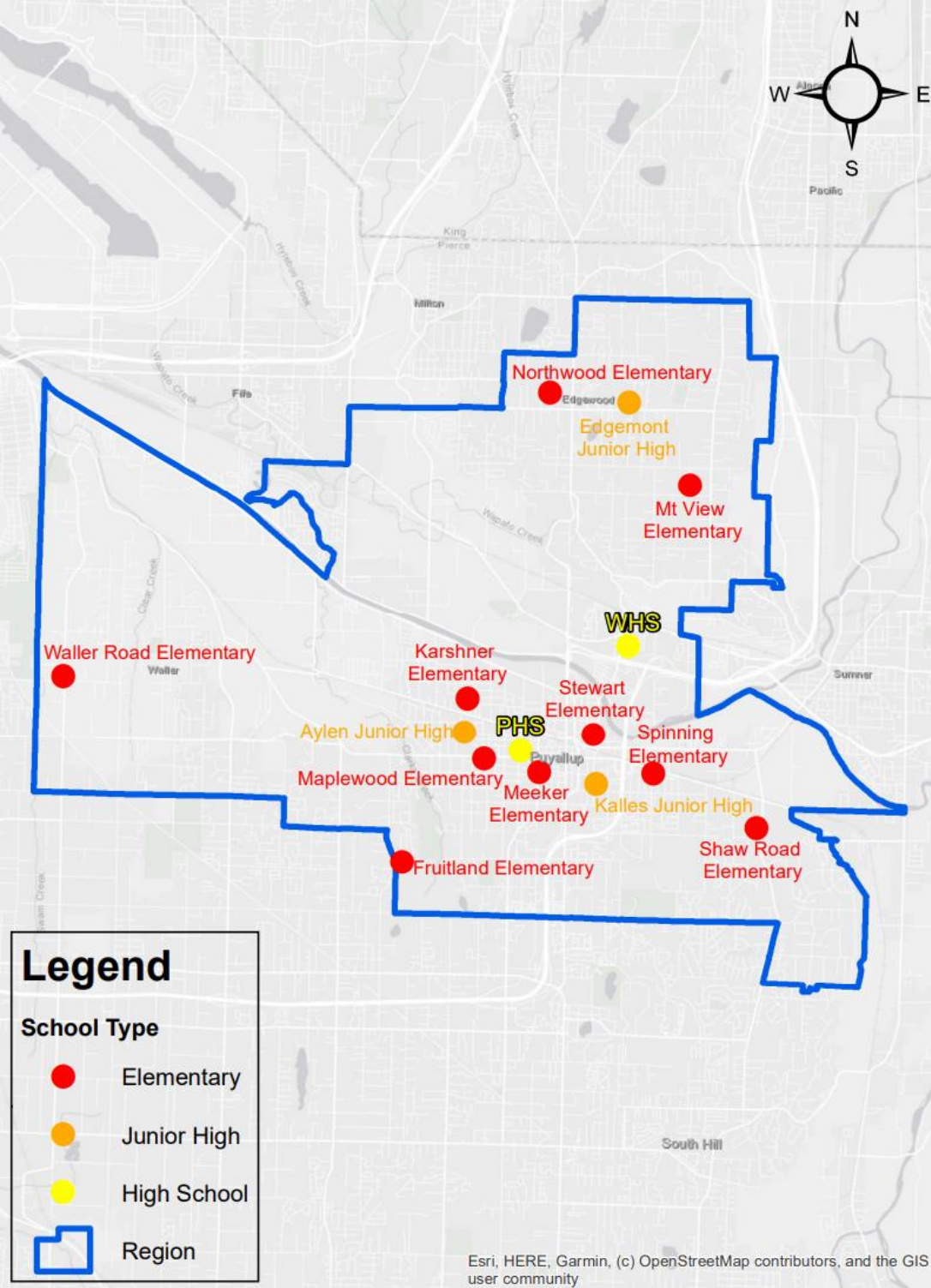
- Schools & Programs in Region 3
- Region 3 School Capacity & Enrollment

Meeting #6 – Learning Targets

- Be able to identify schools and programs in Region 3.
- Identify which schools in Region 3 will be challenged, if any, to serve enrollment growth from new housing.
- Understand lessons learned from Edgemont’s transition to a 6th – 9th grade Junior High school.
- Recognize unique characteristics of Region 3, compared to other regions in the district.

Region 3 Schools





Region 3

Featured Programs in Region 3

- Fruitland – Support Center (2)
- Karshner – Dual Language (K-5th grade)
- Maplewood – SPED Preschool (3), Right at School Preschool (2), KA
- Meeker – Support Center (2)
- Mt. View – Kindergarten Academy (KA)
- Northwood – Support Center (2), QUEST (3)
- Shaw Road– Support Center (2), Dev. Kindergarten, KA, QUEST (4)
- Spinning– KA, QUEST (3)
- Stewart – SPED Preschool (2)
- Waller Road – Kindergarten Academy (KA)

All schools have at least one classroom for the Resource Program

Featured Programs in Region 3 *(continued)*

- Aylen JH – Support Center, KITE
- Edgemont JH – N/A
- Kalles JH – Support Center (2), PAGE
- Puyallup HS – Support Center (3), KITE, Gateway
- Walker HS – Puyallup Open Doors (2)

All schools have at least one classroom for the Resource Program



MATT DRISCOLL



Matt Driscoll is a News Tribune columnist.

A rural Pierce County city is one of WA's fastest-growing places. Here's how it's managing

BY MATT DRISCOLL

UPDATED MARCH 13, 2023 10:22 AM

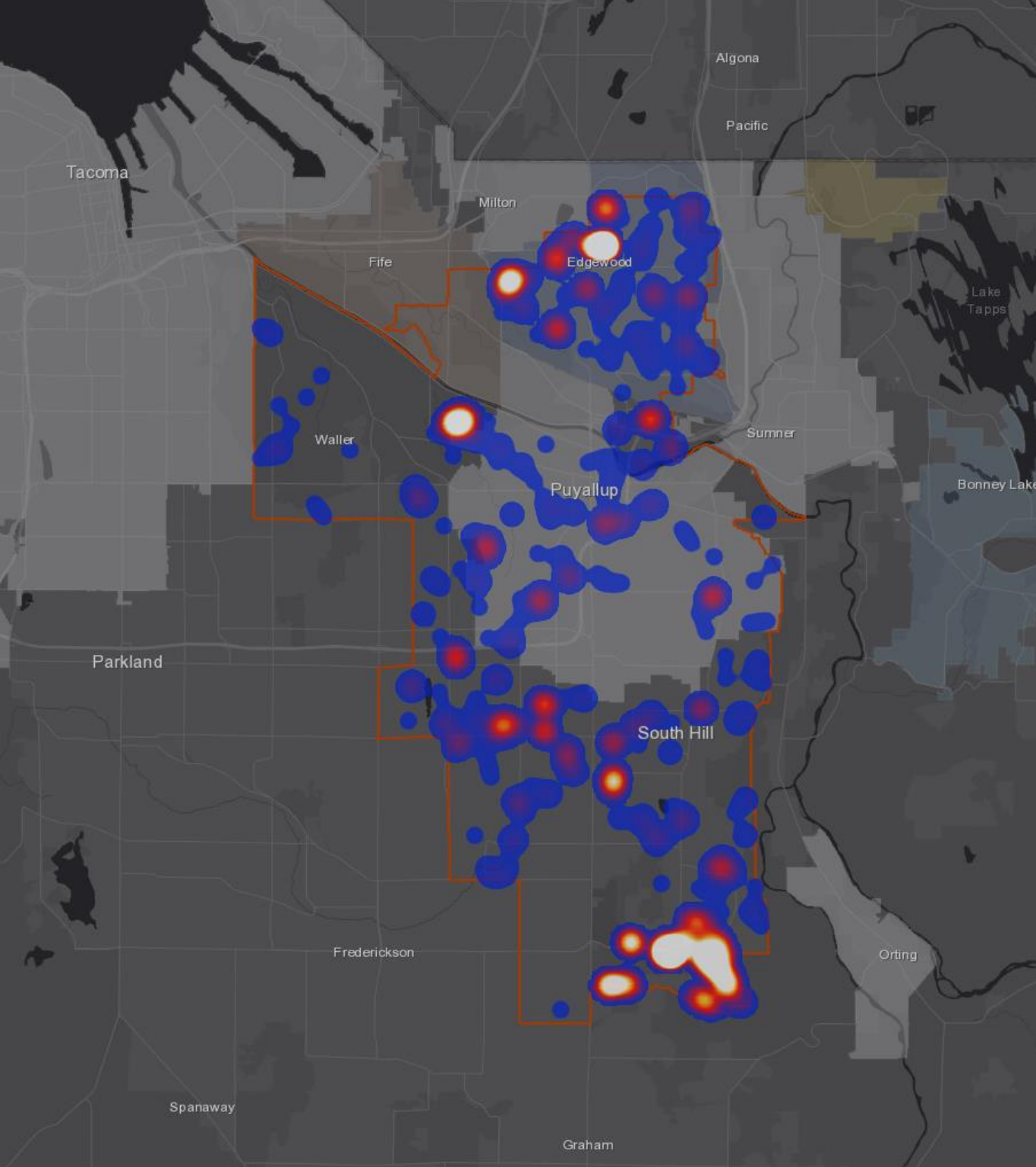


The old windmill at Nyholm's Market is silhouetted by the Saturday afternoon sun in Edgewood, Wash. PETE CASTER pcaster@thenewstribune.com

Heat Map

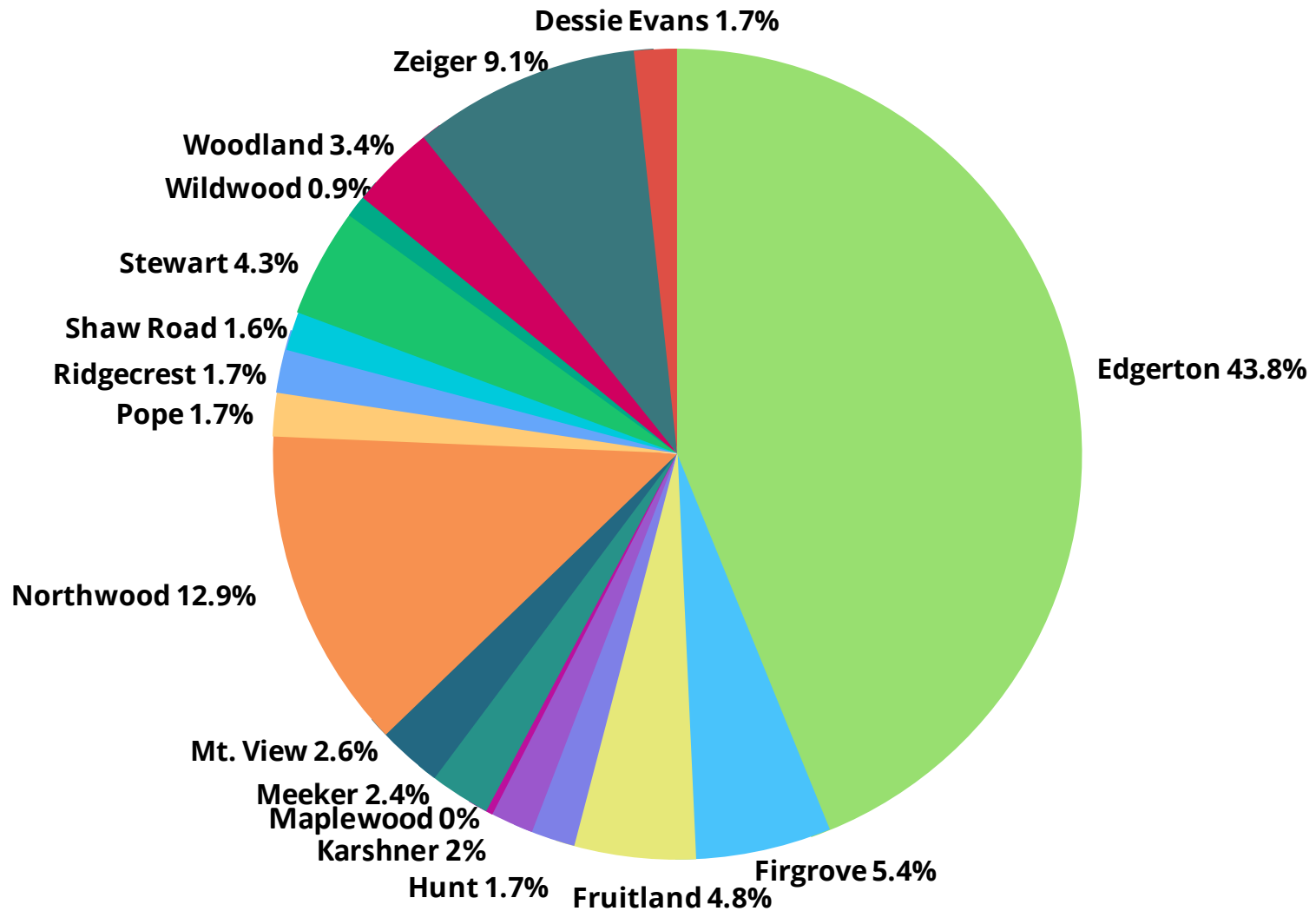
Residential Building
Permits within
Puyallup School
District

Sept 2018 – Aug 2023



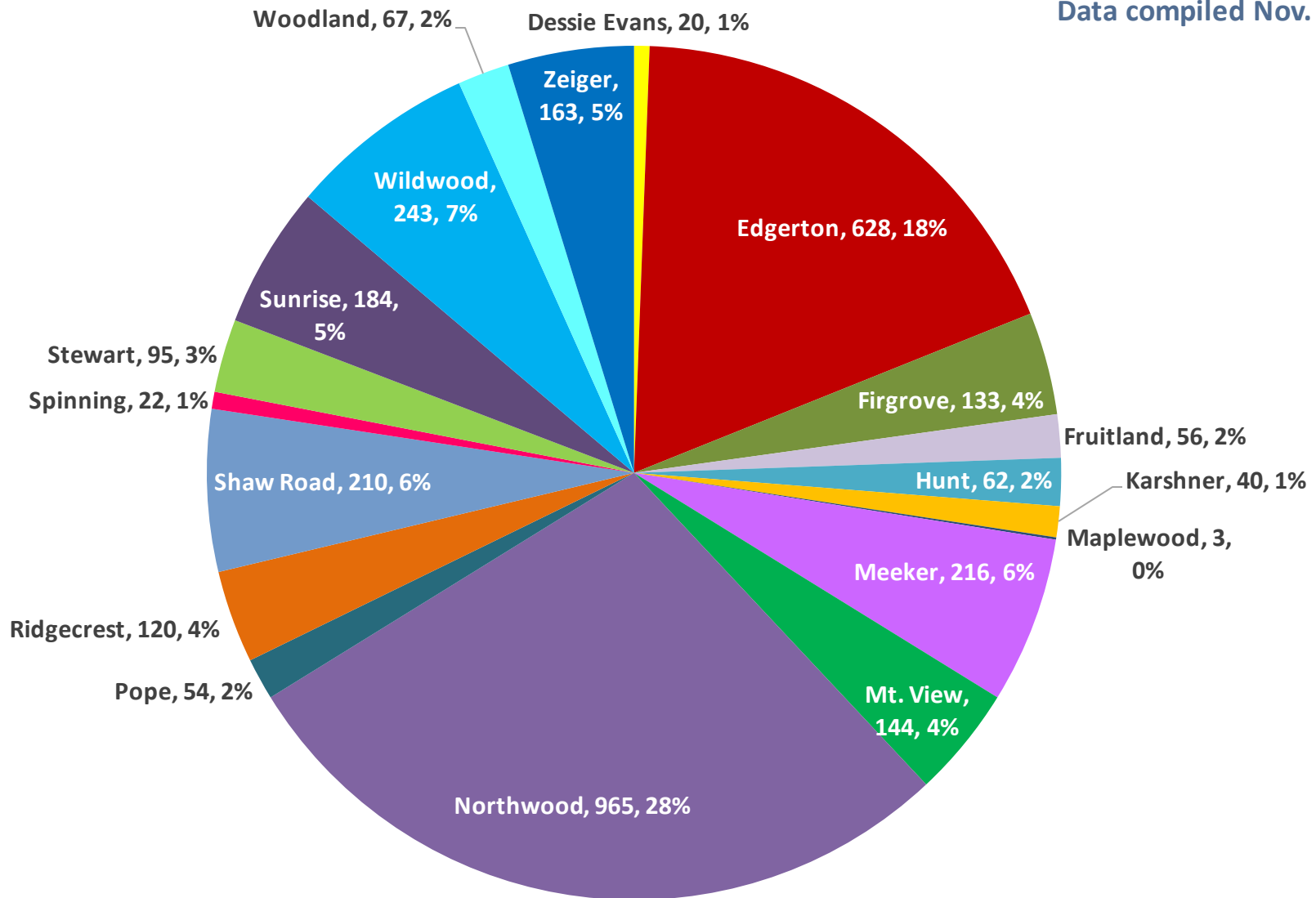
2022-2027 (5 YR) Single-Family Detached Only – Planned Housing Units by Elementary Attendance

Data compiled Nov. 2022



2022-2027 (5 YR) All Housing Types – Planned Units by Elementary Attendance

Data compiled Nov. 2022



Region 3 Enrollment & Capacity

SCUT Elementary 2027-28 4-Year	FRUITLAND	KARSHNER	MAPLEWOOD	MEEKER	MT VIEW*	NORTHWOOD*	SHAW RD	SPINNING	STEWART	WALLER RD	REGION 3 TOTAL
Student Capacity (excluding Portables)	438	286	198	328	231	692	668	286	308	220	3,655
10/1/2023 Enrollment**	578	413	319	363	261	706	624	299	290	296	4,149
Enrollment w/ Projected Growth	590	416	320	390	282	763	648	303	305	296	4,313
Capacity +/-	(152)	(130)	(122)	(62)	(51)	(71)	20	(17)	3	(76)	(658)
Student Capacity (with portables)	592	484	352	372	357	755	734	374	396	396	4,812
Capacity +/-	2	68	32	(18)	75	(8)	86	71	91	100	499

Student capacity is based upon 22 students/classroom at 100% utilization rate. Northwood and Mt View use 21 students/classroom (K-5)

Preschool rooms and enrollment are not included in the capacity analysis.

*K-5th grade counts.

**Enrollment from Facilities Extract Cognos report pulled from eSchoolsPLUS on 10/1/2023. Does not include Preschool, Kindergarten Academy, P4 or PDL students.

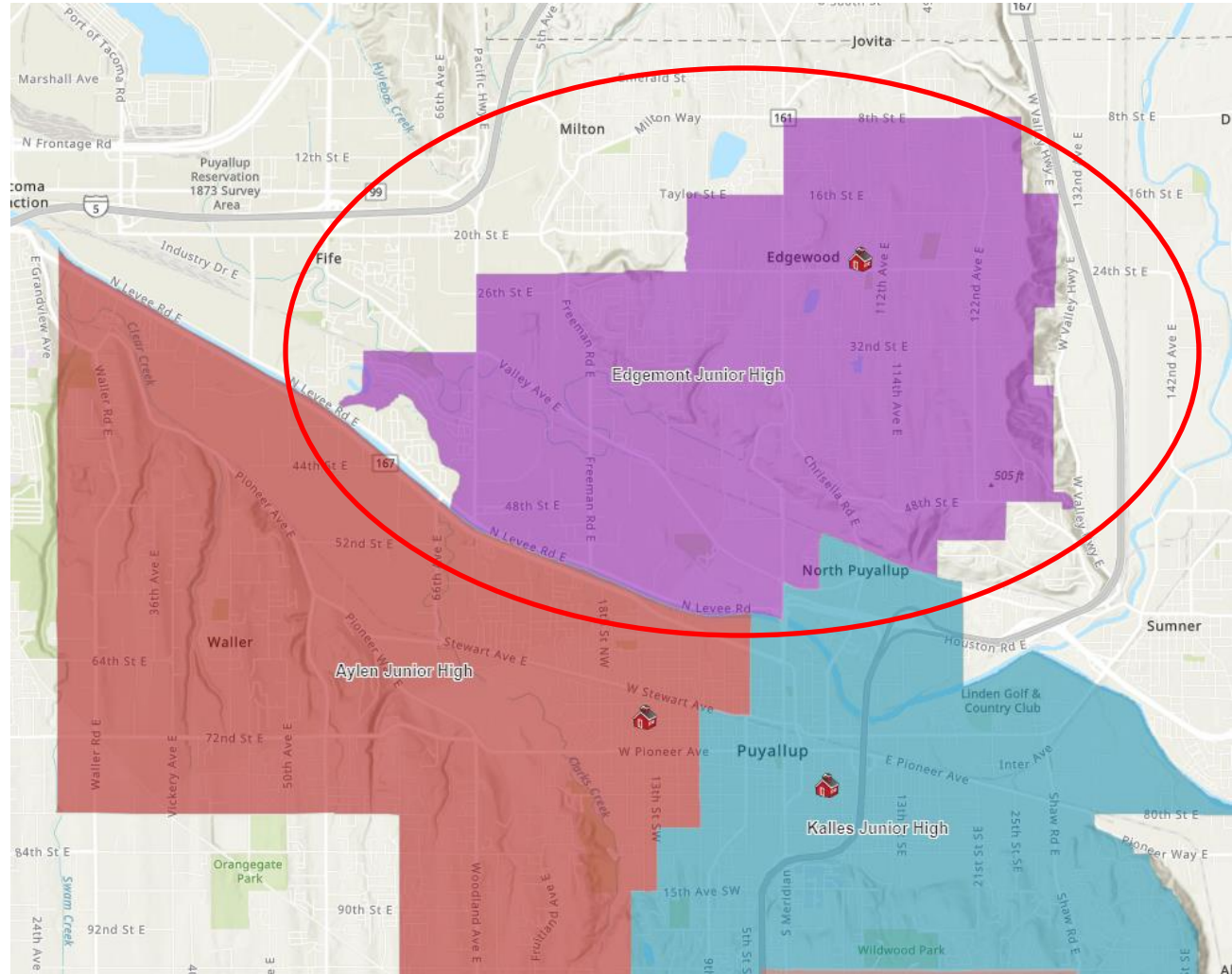
A photograph of students in a classroom, overlaid with a dark blue semi-transparent filter. The students are focused on their work, with one student in the foreground writing on a piece of paper. The background shows other students and a whiteboard with some writing.

North Hill Grade Configuration

Dr. Mark Knight
Principal, Edgemont Junior High

Edgemont JH

- Edgemont opened in 1938 as a 1st-8th grade, 8-classroom school.
- Rebuilt in 2001, now serves 6th – 9th grade.
- Attendance Area includes portions of Edgewood, Fife, Puyallup, & unincorporated Pierce County.
- City of Edgewood incorporated in 1995, city sewer Phase 1 established in 2012.



Edgemont Junior High – 6th-9th Grade

- Why did Edgemont transition from a 7th-9th grade school to 6th-9th grade in 2017-18? Why has it remained the only 6th-9th grade junior high school in the district?
- What schedule do 6th graders follow (same as 7th-9th grade or is it unique)?
- What benefits are there to a 6th-9th grade alignment vs the typical 7th-9th grade alignment at PSD junior highs?
- What challenges are there to a 6th-9th grade alignment vs the typical 7th-9th grade alignment at PSD junior highs?
- What other dynamics make Edgemont Junior High or North Hill unique compared to other regions in the district?

A photograph of three students sitting at a table, focused on their work. The student in the center is a young woman with her hair in a bun, wearing a dark jacket. To her right, another student is leaning over, writing. To her left, a third student is partially visible, wearing a dark cap with a logo. They are all looking down at papers on the table. The background is slightly blurred, showing a sign that says "Work Day". The entire image has a dark blue overlay.

Break (5 minutes)

A photograph of several students sitting at a desk in a classroom, looking down at papers and writing. The image is dimmed with a blue overlay. The text is overlaid on the image.

Characteristics of Region 3

- Space Considerations
- Ranked Building Condition
- Puyallup High School Library Science Building Closure
- Size and Age of School Buildings

Puyallup High School



Puyallup Junior and Senior High
School, Hill and Mock, Architects, 1927
Northwest Room at The Tacoma Public Library, Richards Studio
A9315-1



Puyallup High School, 2023

Academics have changed



1953 Classroom. Northwest Room at The Tacoma Public Library, Richards Studio C106386-1



Emerald Ridge Science Class

Space Considerations

What are Ed Specs?

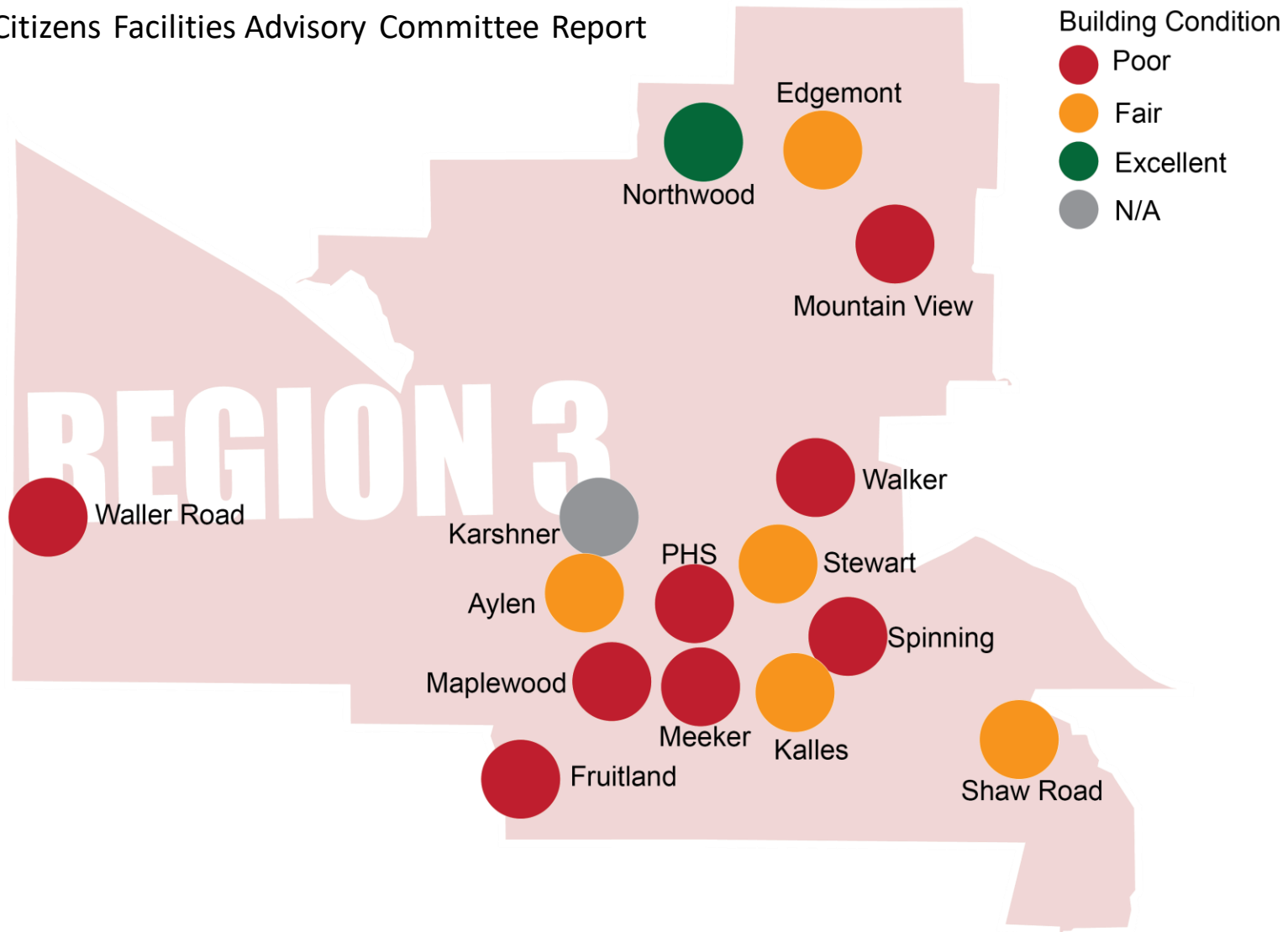
The purpose of the Educational Specifications process is to revise and update the Puyallup School District's most recent **School Educational Specifications to reflect changes in educational programs, school capacity, and approach to technology**. The document provides design professionals a narrative describing the physical environment that will support Puyallup School District's vision for new and modernized elementary schools.

Categories Defined Per Specific Space-

- The Size of a General-Purpose Classroom, Gym or Support Center
- Curriculum area function by grade level
- Preferred spatial relationships within department
- Special support facilities such as equipment or fixtures
- Cabinetry/storage requirements within each space, fixed / movable
- Visual display equipment/surfaces
- Environmental requirements
- Furniture and other non built-in equipment

Region 3 Building Conditions

2021-22 Citizens Facilities Advisory Committee Report



Puyallup High School

Building Condition: **POOR**



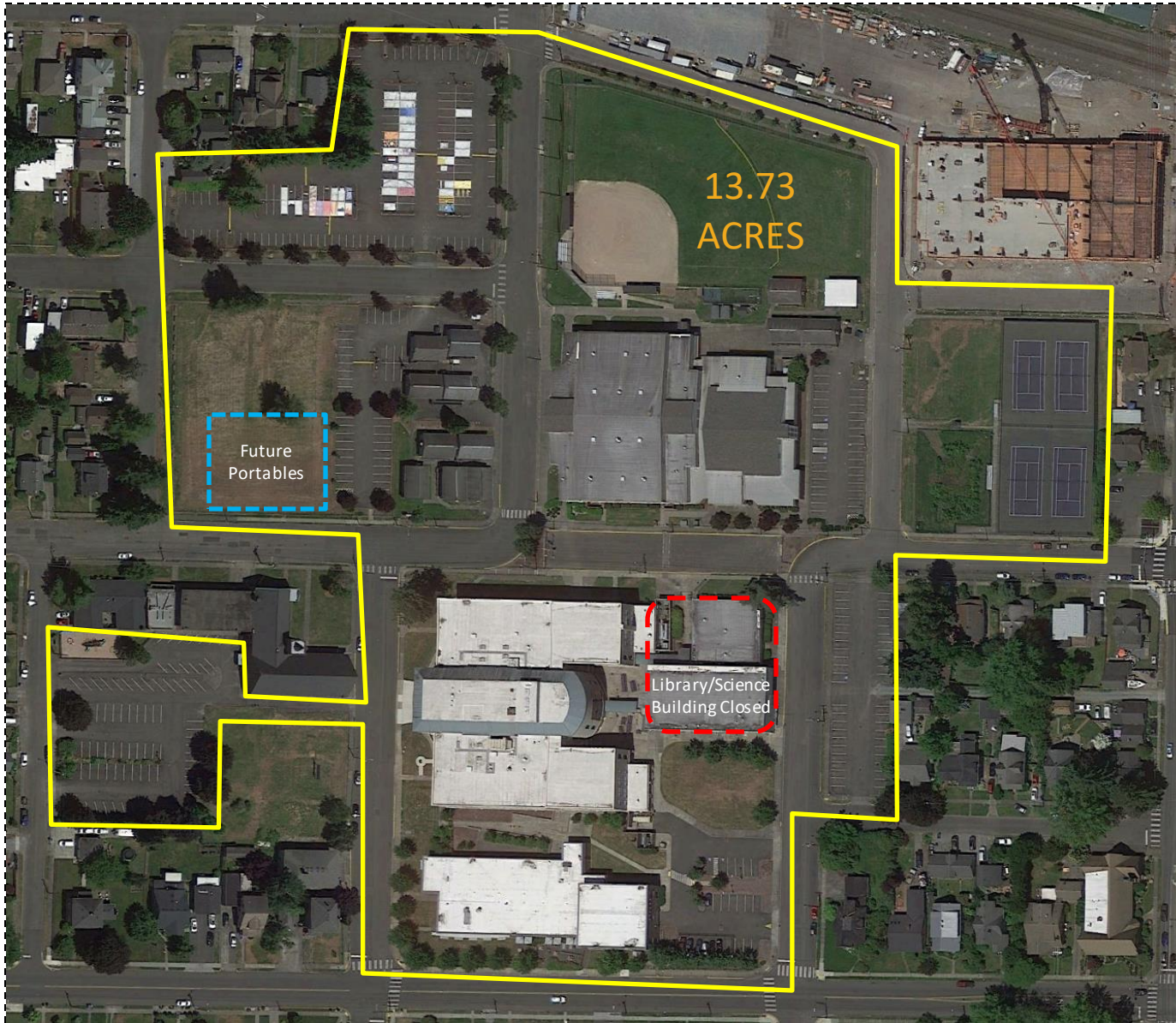
CHALLENGE: Puyallup High School is located on a small urban site in downtown Puyallup. The **current building and site improvements do not meet the program needs for classroom space**, athletics, or core facilities (admin, special ed, commons, library). The **lack of both parking and athletics fields** are a major issue at PHS. **Consolidation of the buildings for safety reasons** is a major goal. Construction needs to be done on an incremental basis to maintain a high-quality program for students. **Many building systems are at or near the end of their useful life.** Some buildings are eligible for State match modernization funding.

BCA Score	100 Scale	WAC	Description
Main Building	48.25	3.07	Poor
Library Science Building	40.50	3.38	Poor
Career Tech Ed. Building	72.25	2.11	Good
Building Condition Assessment District Ranking Link			
Study and Survey BCA Executive Summary Link			
Growth / Capacity Need			Med
# Portables			13
School Construction Assistance, Mod/Repl Eligibility (State Match)			Varies

RECOMMENDED IMPROVEMENTS

- **Classroom spaces for 2000 students**
- Science lab, CTE, art and general ed classrooms rooms
- **New library**, expanded commons, expanded admin and student services
- Expanded student and staff collaboration spaces
- New main gym, aux gym, weight room, locker rooms, pool
- Two new tennis courts
- Outdoor field expansion

Puyallup High School Campus



Summer 2024 Changes

- Add (3) double portables for a total of six classrooms
- Demo Library/Science Building

Closed

Puyallup Library Science Building



Puyallup Micro Library



Puyallup Classrooms



Science Lab



Art Room

Spinning Elementary

Building Condition: **POOR**



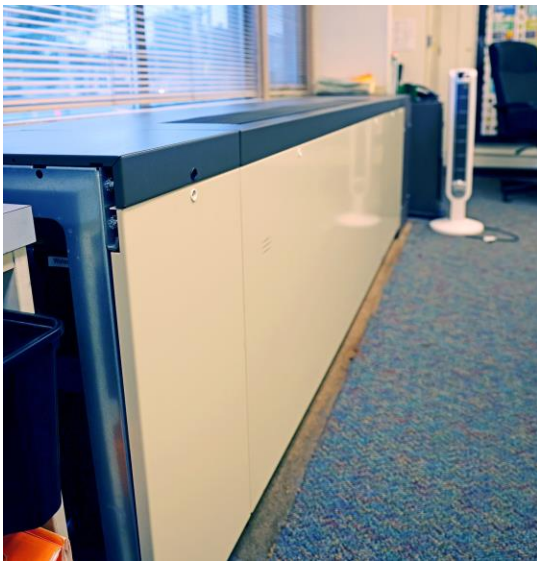
CHALLENGE: Spinning Elementary School serves grades K-6 in the valley east area of the District. The existing school **does not have an adequate library, cafeteria or gym and does not meet other District standards** (special ed, offices, project spaces). The location of the main office for supervision purposes is poor. The school has 4 portables. The existing building, due to its age, has **systems that are reaching or beyond the end of their useful life. Spinning has the lowest BCA score of any school in the District.** The existing building is eligible for State match modernization funding.

BCA Score	100 Scale	WAC	Description
Main Building	40.50	3.38	Poor
Building Condition Assessment District Ranking Link			
Study and Survey BCA Executive Summary Link			
Growth / Capacity Need	Low		
# Portables	4		
School Construction Assistance Mod/Repl Eligibility (State Match)	Eligible		

RECOMMENDED IMPROVEMENTS

- **Provide capacity for up to 500 students (TBD).**
- Meet all district standards for instructional and support spaces.
- Improve traffic circulation and parking.

Spinning Elementary

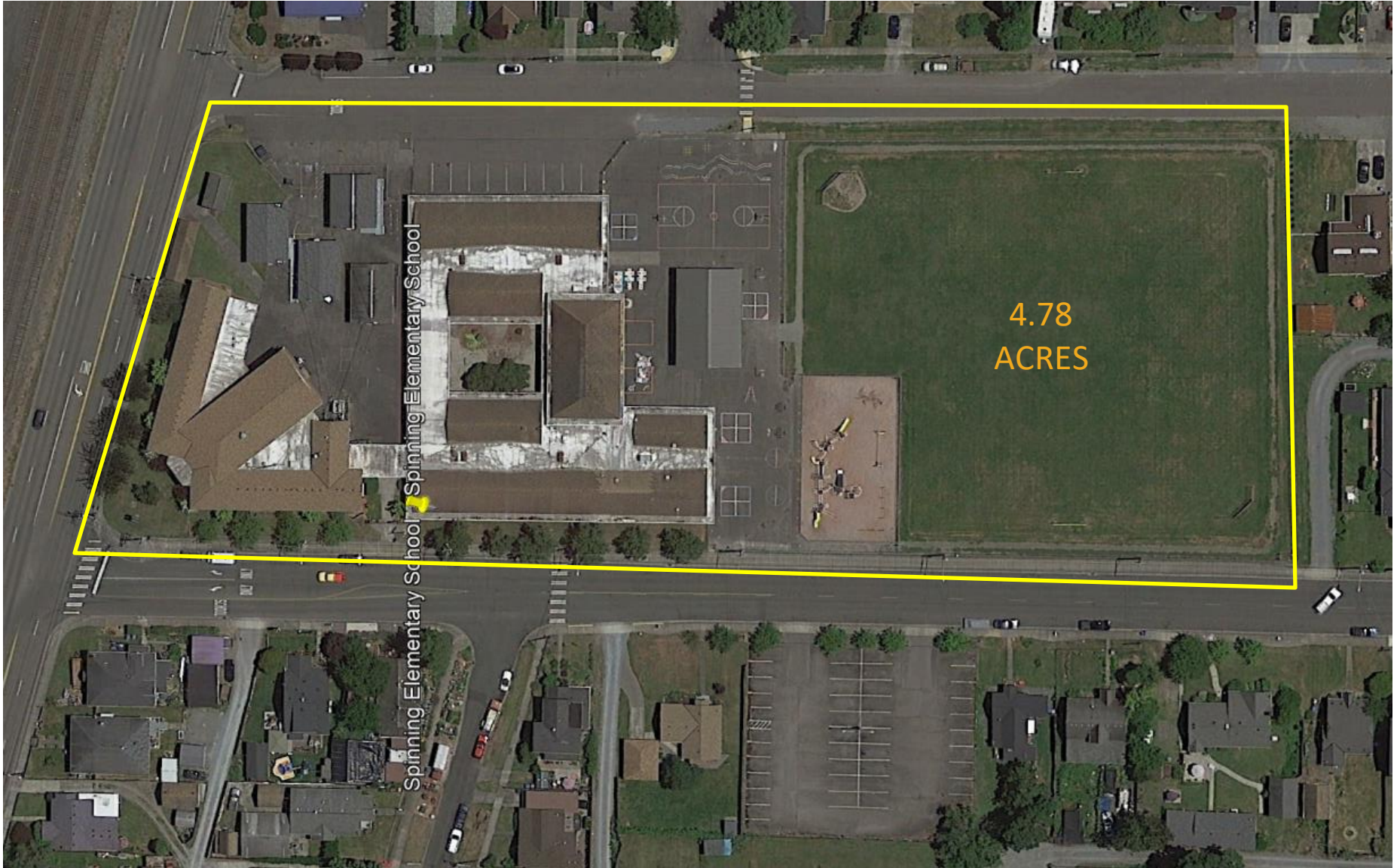


“As a teacher at Spinning, there are many challenges we have to overcome due to the aging building. When I moved into my classroom in Fall of 2022, the HVAC unit was not operable. My classroom needed to be supplemented with an air purifier, since I had no airflow in my room. To make my classroom a welcoming place to teach in, I would utilize fans and heaters in my classroom. During the spring and early fall months, I would use fans to blow in the cold morning air into the classroom, and then when it got too warm, I would place the box fan in the doorway to blow the cold air from the hallway into the classroom. . For heat, I used a radiant heater, which takes hours to get the room to temperature, but it cannot be left on overnight. My students would wear their gloves, coats or hats in the classroom when it was cold. ”



*Lindsay Spicer, Third-grade Teacher
Spinning Elementary*

Spinning Elementary Site Challenges



Meeker Elementary

Building Condition: **POOR**



CHALLENGE: Meeker Elementary School serves grades K-6 in the valley west area of the District. The existing school does not meet some District standards (special ed, offices, project spaces). The school has 2 portables. The existing building, due to its age, has systems that are reaching the end of their useful life. The existing building is eligible for State match modernization funding in 2036.

BCA Score	100 Scale	WAC	Description
Main Building	52.25	2.91	Poor
Building Condition Assessment District Ranking Link			
Study and Survey BCA Executive Summary Link			
Growth / Capacity Need	Medium		
# Portables	2		
School Construction Assistance Mod/Repl Eligibility (State Match)	2036		

RECOMMENDED IMPROVEMENTS

- Provide capacity for up to 500 students (TBD).
- Add general ed classrooms, special ed spaces, offices, project rooms.



“The attached picture is from our orchestra instruction today, happening in the main foyer of our school. Typically, our orchestra teacher uses our staff lounge. This requires him to deconstruct (move and flip tables, add chairs, roll the piano out, etc.) each session and then put them all back after class.”

Today we were having a staff Friendsgiving Gathering as part of our Belonging and Culture work which required me to move him into the hallway.”

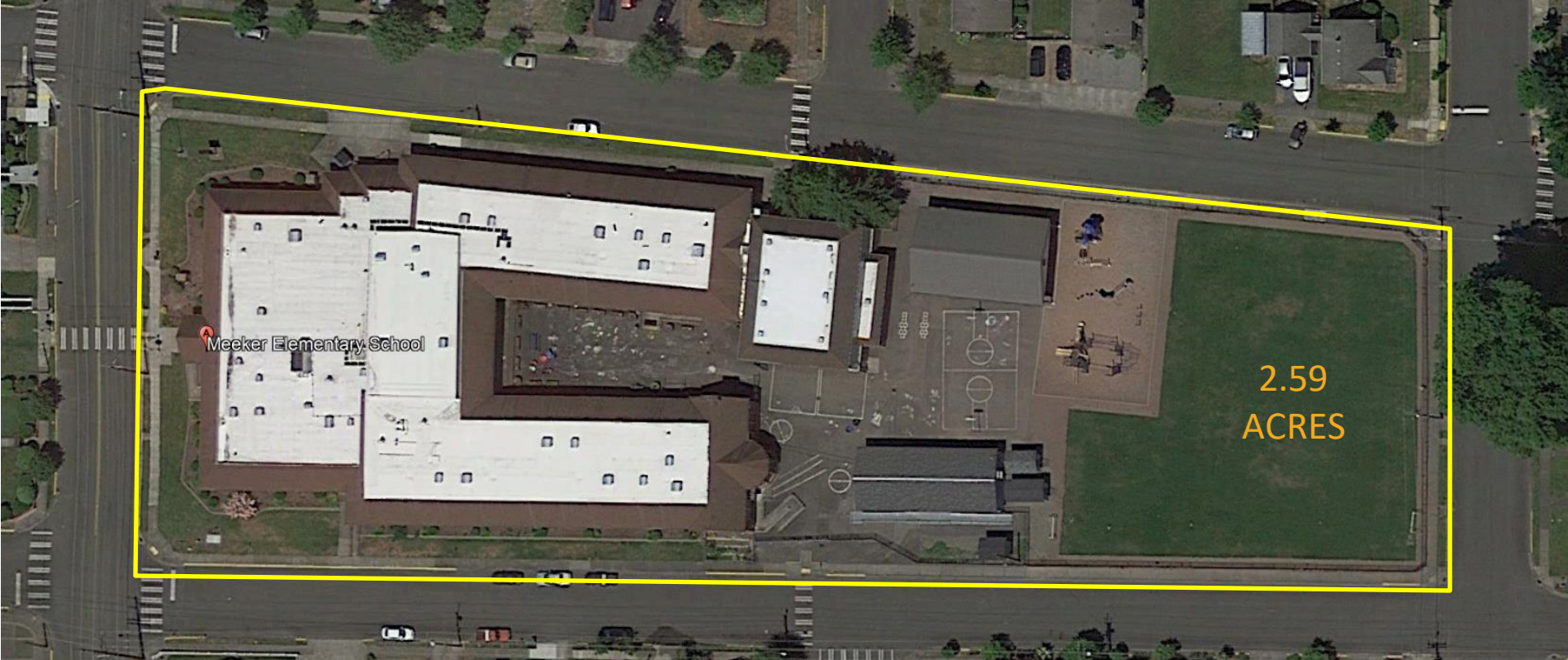
David Couch
Principal, Meeker Elementary



Meeker Elementary



Meeker Elementary Site Challenges



Waller Road Elementary

Building Condition: **POOR**



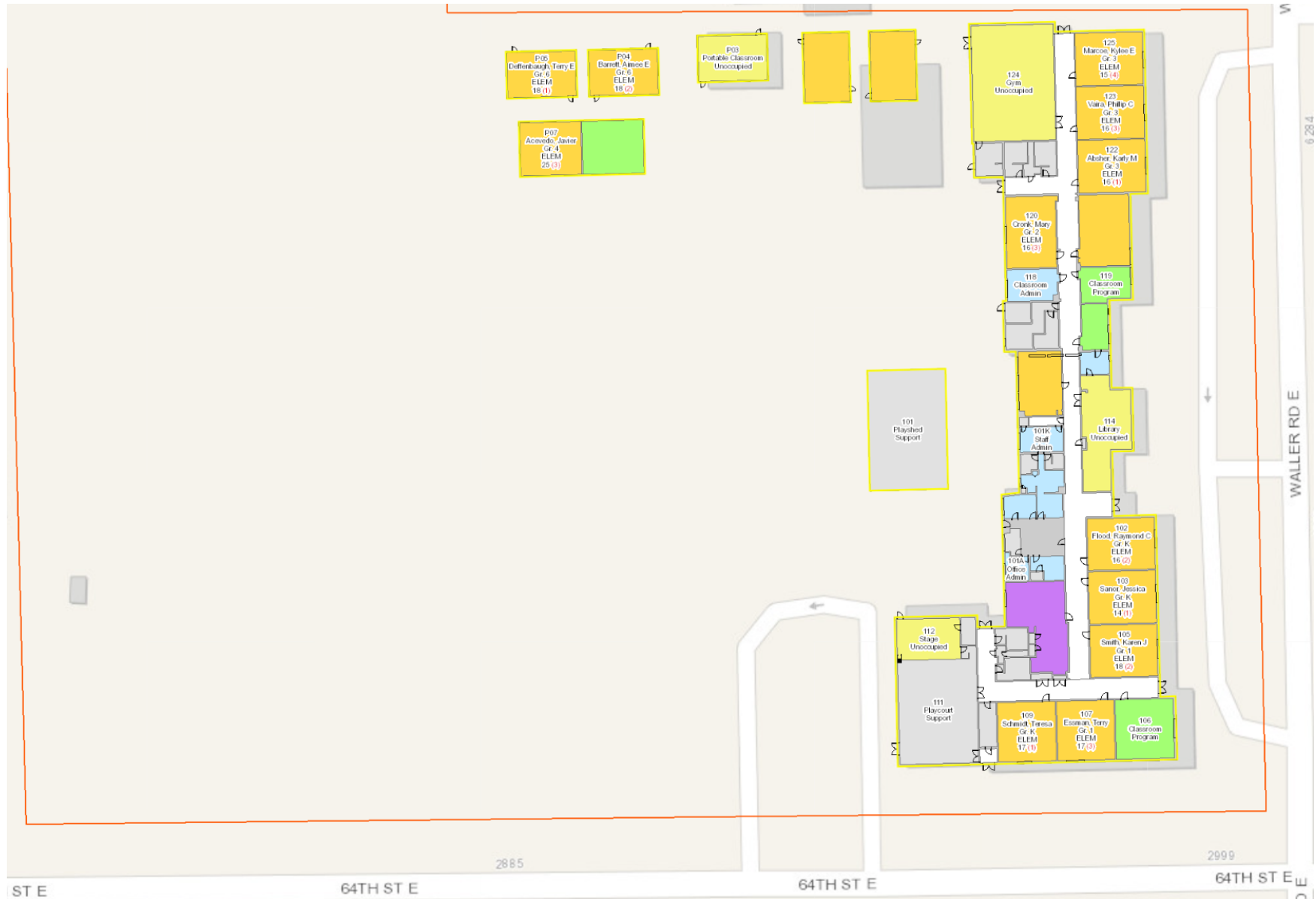
CHALLENGE: Waller Road Elementary School serves grades PK-6 in the valley west area of the District. The existing school **does not have an adequate library, cafeteria or gym** and **does not meet other District standards** (special ed, offices, project spaces). The location of the main office for supervision purposes is poor. Parking and traffic circulation need improvement. The school has 8 portables. The existing building, due to its age, has **systems that are reaching or beyond the end of their useful life**. The existing building is eligible for State match modernization funding.

BCA Score	100 Scale	WAC	Description
Main Building	52.50	2.90	Poor
Building Condition Assessment District Ranking Link			
Study and Survey BCA Executive Summary Link			
Growth / Capacity Need	Low		
# Portables	8		
School Construction Assistance Mod/Repl Eligibility (State Match)	Eligible		

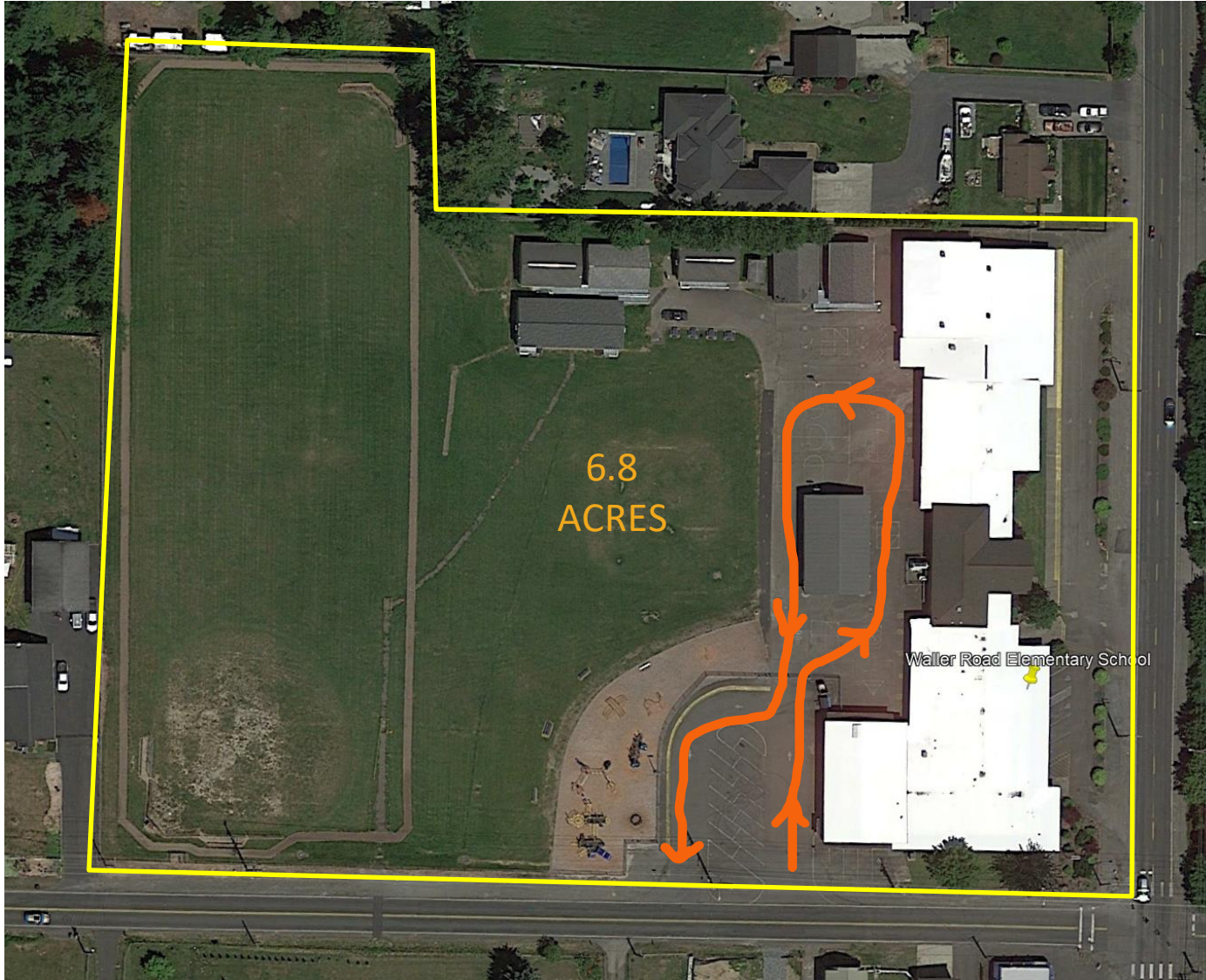
RECOMMENDED IMPROVEMENTS

- Provide capacity for 400 students.
- Meet all district standards for instructional and support spaces.
- Improve traffic circulation and parking.

Waller Road Elementary



Waller Road Site Challenges



Onsite Parking/Queuing

- Playground Hard Play Surface utilized for parent pickup
- Limited staff parking

Questions?

Brian Devereux

Facilities Planning Director
DevereBJ@puyallup.k12.wa.us
(253) 841-8772

Brady Martin

Director of Capital Projects
martibl@puyallup.k12.wa.us

Meeting #7
December 14, 2023, 5-7pm
Karshner Center – 309 4th St NE, Puyallup, WA 98372

[Http://www.puyallupsd.org/scut](http://www.puyallupsd.org/scut)

November 30, Region 3 Exit
Survey

