

ADDENDUM NO. 02

Issued: 12.21.23

Project: Franklin Elementary School, 201 West Mill Street, Liberty, Missouri 64068
Alexander Doniphan Elementary School, 1900 Clay Drive, Liberty, Missouri 64068

Project No. 23027
23028

Owner: Liberty Public Schools
8 Victory Lane
Liberty, MO 64068

Bidding Documents Issued: 11.30.23

This Addendum includes these 1 page[s] and the following attachments:

Project Manual:
No changes

Drawings:
Revised Architectural Sheets: A621, A681

DRAWINGS REVISIONS

A1 SHEET A621 INTERIOR ELEVATIONS

A1.1 REVISED Detail D1A621 Keynote

A1.2 REVISED Detail G1A621 Keynote

A2 SHEET A681 MATERIAL FINISH LEGEND, SCHEDULE & ELEVATIONS

A2.1 REVISED Room Finish Legend B100 Office Floor Finish

END OF ADDENDUM NO 3



SHEET KEYNOTE LEGEND

| | |
|--------------|--|
| 06 10 00.A19 | PLYWOOD BLOCKING AND BACKING PANELS |
| 06 10 00.A20 | FIRE-RETARDANT TREATED PLYWOOD BLOCKING AND BACKING PANELS |
| 07 92 00.A02 | SEALANT W/BACKER ROD |
| 08 41 13.A06 | NON-THERMAL BROKEN STOREFRONT FRAMING (4.5") |
| 09 24 00.A07 | CONTROL JOINTS (ONE-PIECE) |
| 09 29 00.A02 | GYPSUM BOARD - TYPE X |
| 09 30 00.A01 | TILE |
| 09 30 00.A04 | METAL EDGE STRIPS |
| 09 51 13.A01 | ACOUSTICAL CEILING PANELS |
| 09 51 13.A03 | EDGE MOLDINGS AND TRIM |
| 09 65 13.A01 | RESILIENT BASE |
| 09 65 13.A06 | RESILIENT MOLDING ACCESSORY |
| 09 67 23.A01 | RESINOUS FLOORING |
| 09 67 23.A02 | INTEGRAL COVE BASE |
| 10 21 23.A01 | CUBICLE CURTAIN |
| 10 26 00.A04 | IMPACT-RESISTANT WALL COVERINGS |
| 12 21 13.A01 | HORIZONTAL LOUVER BLINDS (MANUAL) |
| 12 32 00.A01 | BASE CABINET |
| 12 32 00.A09 | OPEN BOTTOM BASE CABINET |
| 12 32 00.A10 | SINK BASE |
| 12 32 00.A11 | ADA SINK BASE |
| 12 32 00.A21 | TALL CABINET |
| 12 32 00.A31 | WALL CABINET |
| 12 36 66.A01 | SOLID SURFACE COUNTERTOP |

we design the future[®]
 1828 Walnut Street Suite 922
 Kansas City, MO 64108
 1 816-442-7700
 115 Wilcox Street Suite 210
 Castle Rock, CO 80104
 1 720-949-1689
 HOLLISANDMILLER.COM

Hollis + Miller Architects
 Missouri State Certificate of Authority
 Architecture #0000161

Structural Engineer
 Bob D Campbell
 State Certificate of Authority #000442
 4338 Bellevue Ave
 Kansas City, MO 64111
 816.531.4144

Smith & Boucher
 Mechanical/Electrical/Plumbing
 State Certificate of Authority #ECC000178
 25501 Valley Parkway, Suite 200
 Olathe, KS 66061
 913.345.2127 phone

hollis + miller architects

SHEET MATERIAL FINISH LEGEND

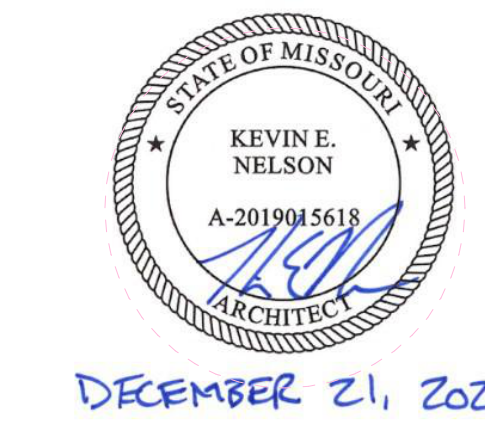
| ID | MATERIAL | COLOR/FINISH |
|-----|------------------------------|----------------------------|
| F2 | Fabric | 009 Calming |
| HP1 | High Performance Coating | Natural Choice |
| HP2 | High Performance Coating | Repose Gray |
| P1 | Paint | Natural Choice |
| P2 | Paint | Repose Gray |
| P3 | Paint | Commodore |
| PL1 | Plastic Laminate | Neutral Twill |
| PL2 | Plastic Laminate | Harvest Maple |
| RB3 | Resilient Base & Accessories | 123 Charcoal |
| RB4 | Resilient Base & Accessories | 139 Deep Navy |
| SS1 | Simulated Stone | Everest |
| T3 | Tile | 0790 Artic White |
| T5 | Tile | 1174 Sea Breeze |
| T6 | Tile | AR06 Editorial White |
| TR1 | Trim | |
| TR2 | Trim | |
| WC1 | Wall Coverings | Lava |
| WD1 | Wood | Match Existing Clear Stain |
| WF | Window Film | |
| WP1 | Fabric Wrapped Tack Panel | TBD |

CONSTRUCTION DOCUMENTS

Franklin Elementary School
 Liberty Public Schools
 201 W Mill St.
 Liberty, MO 64068

REVISIONS:

| # | Description | Date |
|---|-------------|----------|
| 1 | Amendment 1 | 12.21.23 |

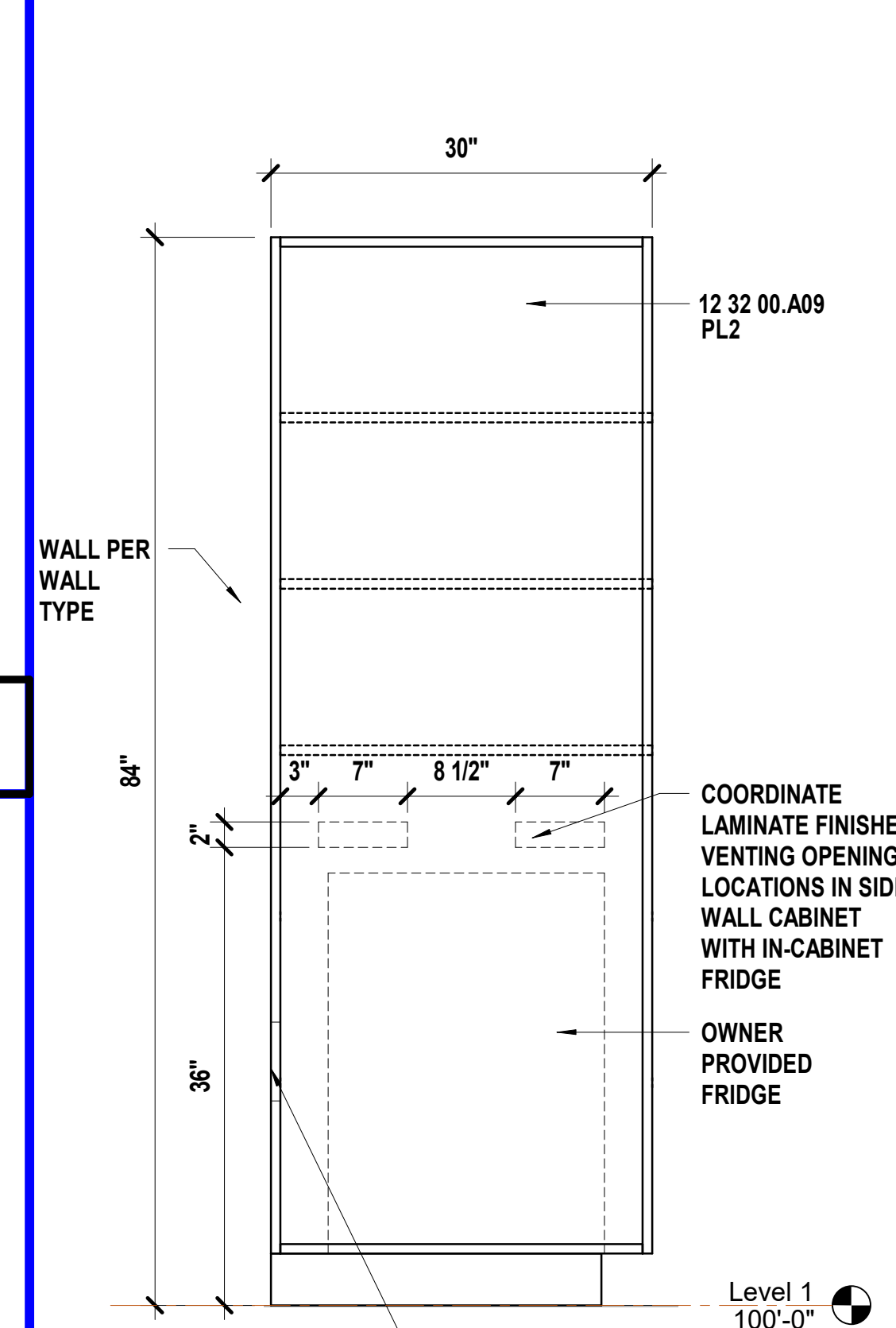


JOB NO: 23027
 DRAWN BY: RO, LB
 CHECKED BY: JB
 DATE: 11.22.2023

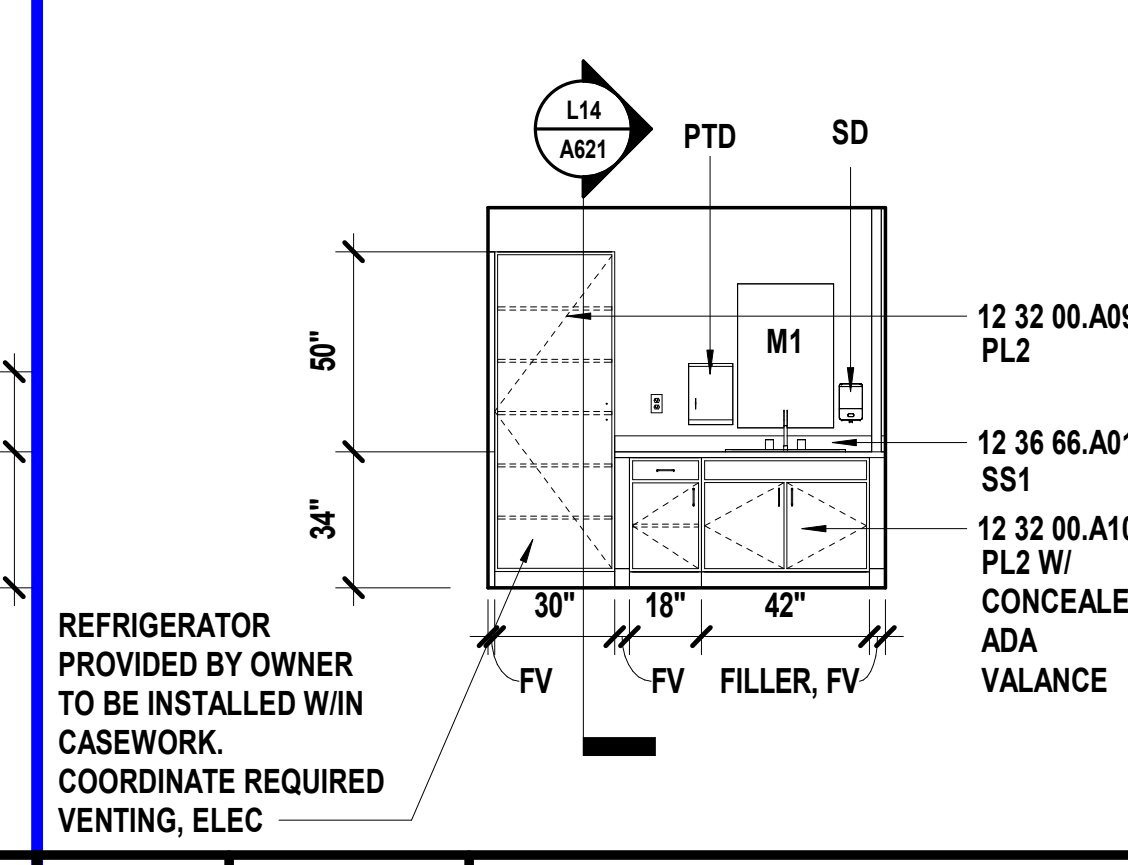
A621

INTERIOR ELEVATIONS

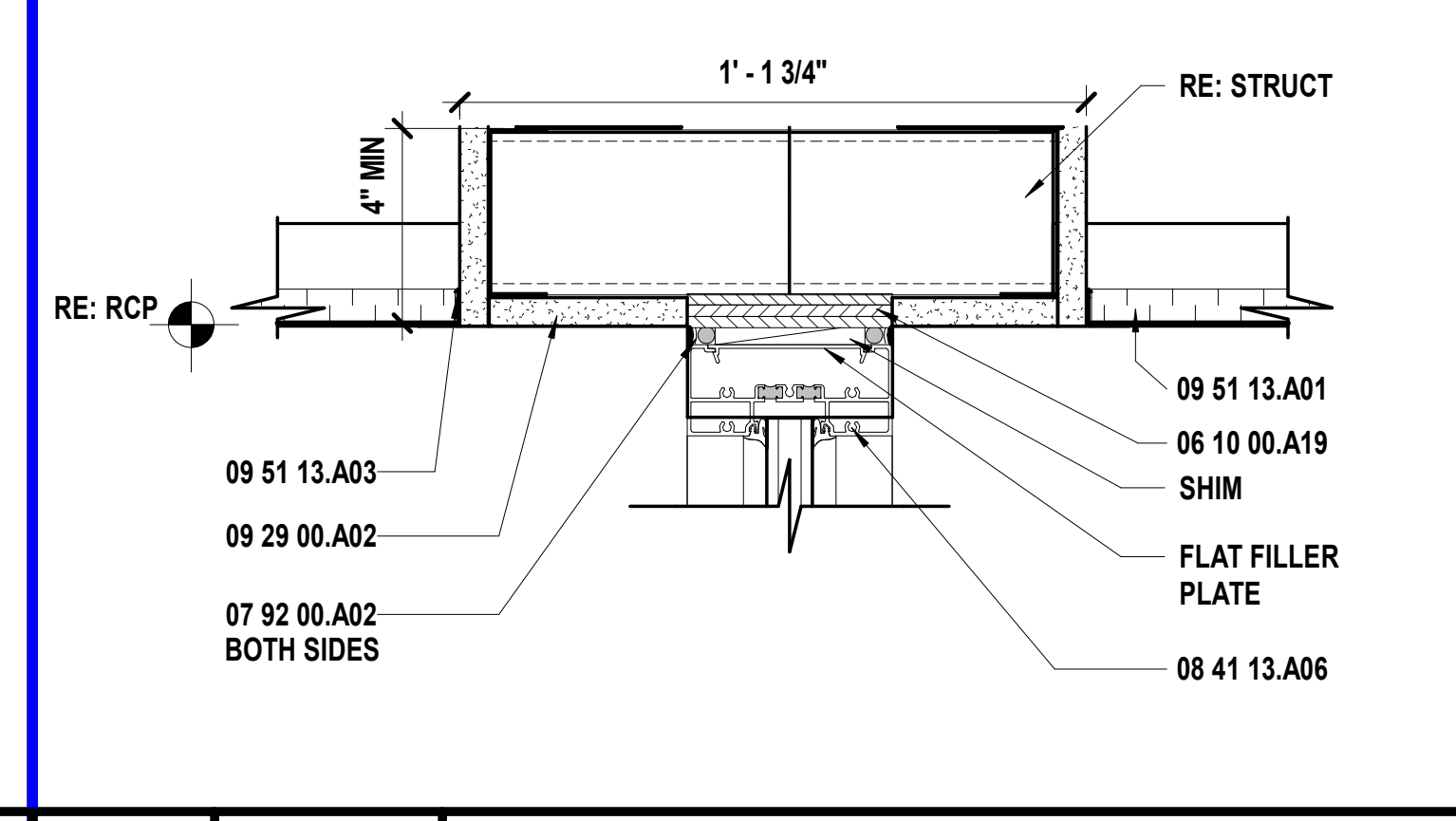
Please consider the environment before printing this.



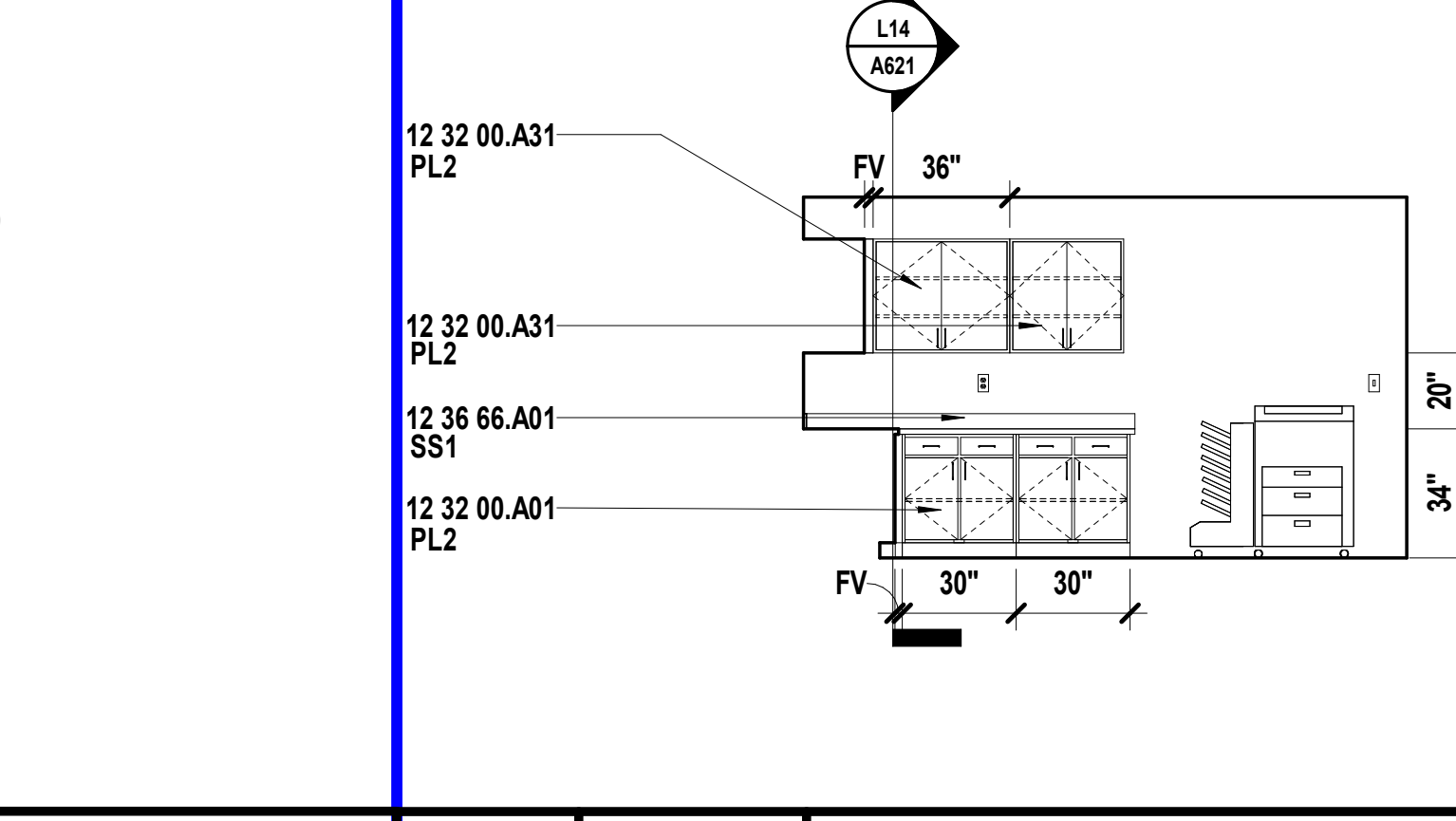
L14 Scale 1" = 1'-0" Casework Section - Lactation B116 - W



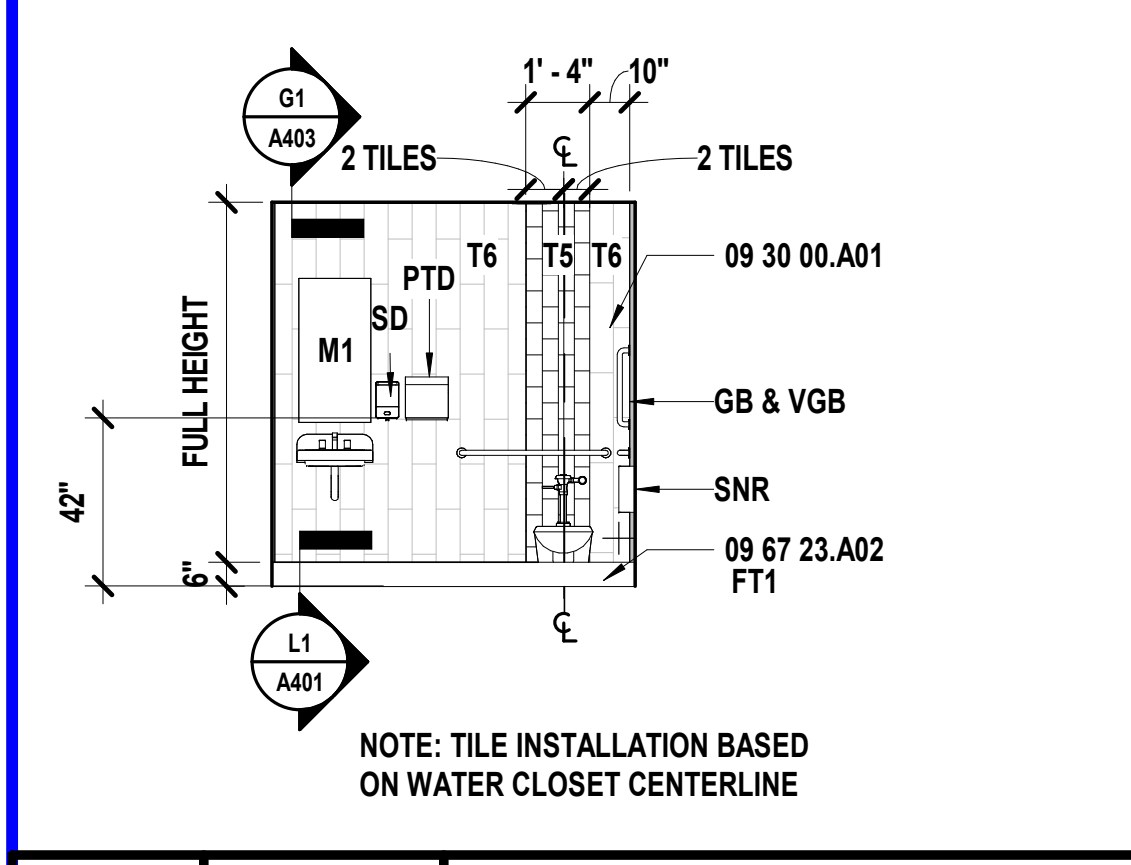
H14 Scale 1/4" = 1'-0" Interior Elevation - Lactation Room B116 - S



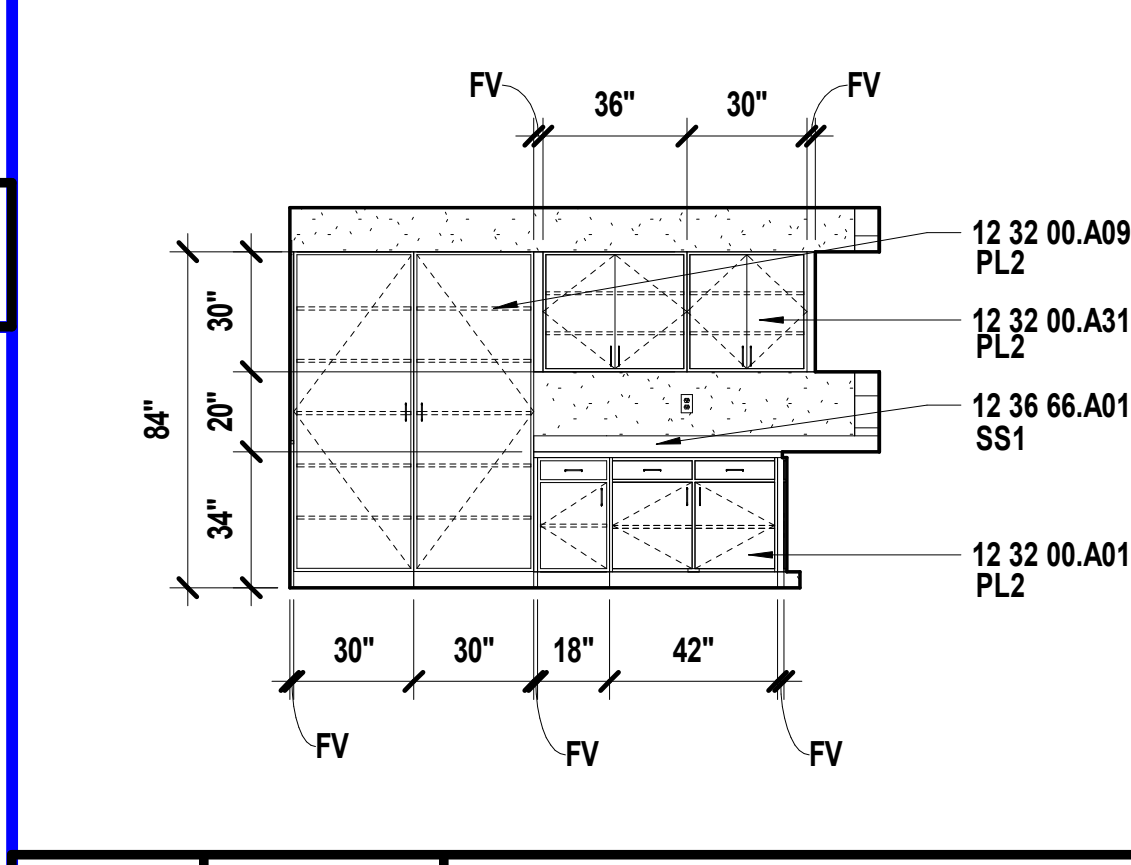
P10 Scale 3" = 1'-0" Ceiling Detail - Office B100 - N



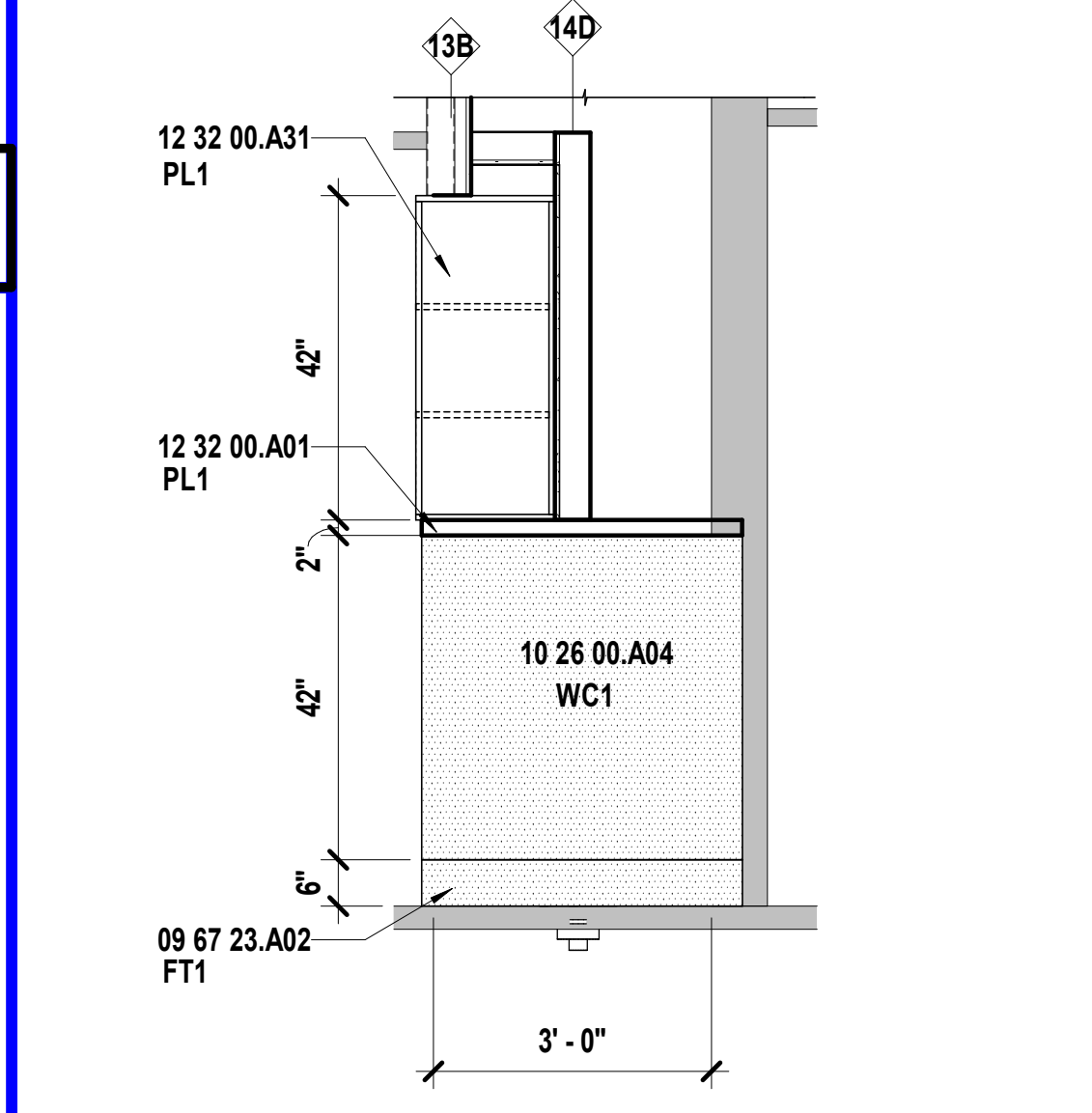
H11 Scale 1/4" = 1'-0" Casework Elevation - Workroom B115 - S



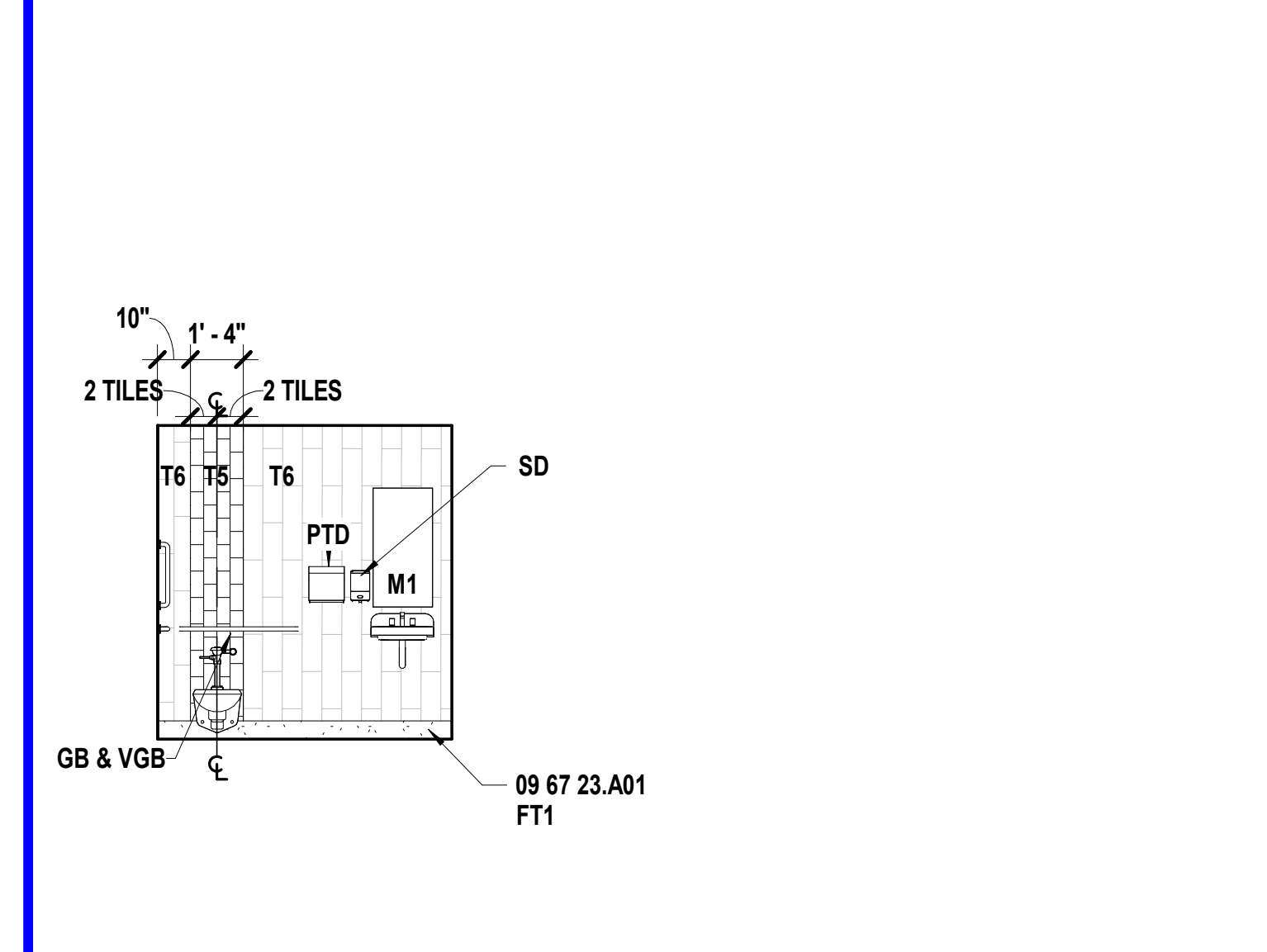
P7 Scale 1/4" = 1'-0" Tile Elevation - Staff Restroom B114a Typical - S



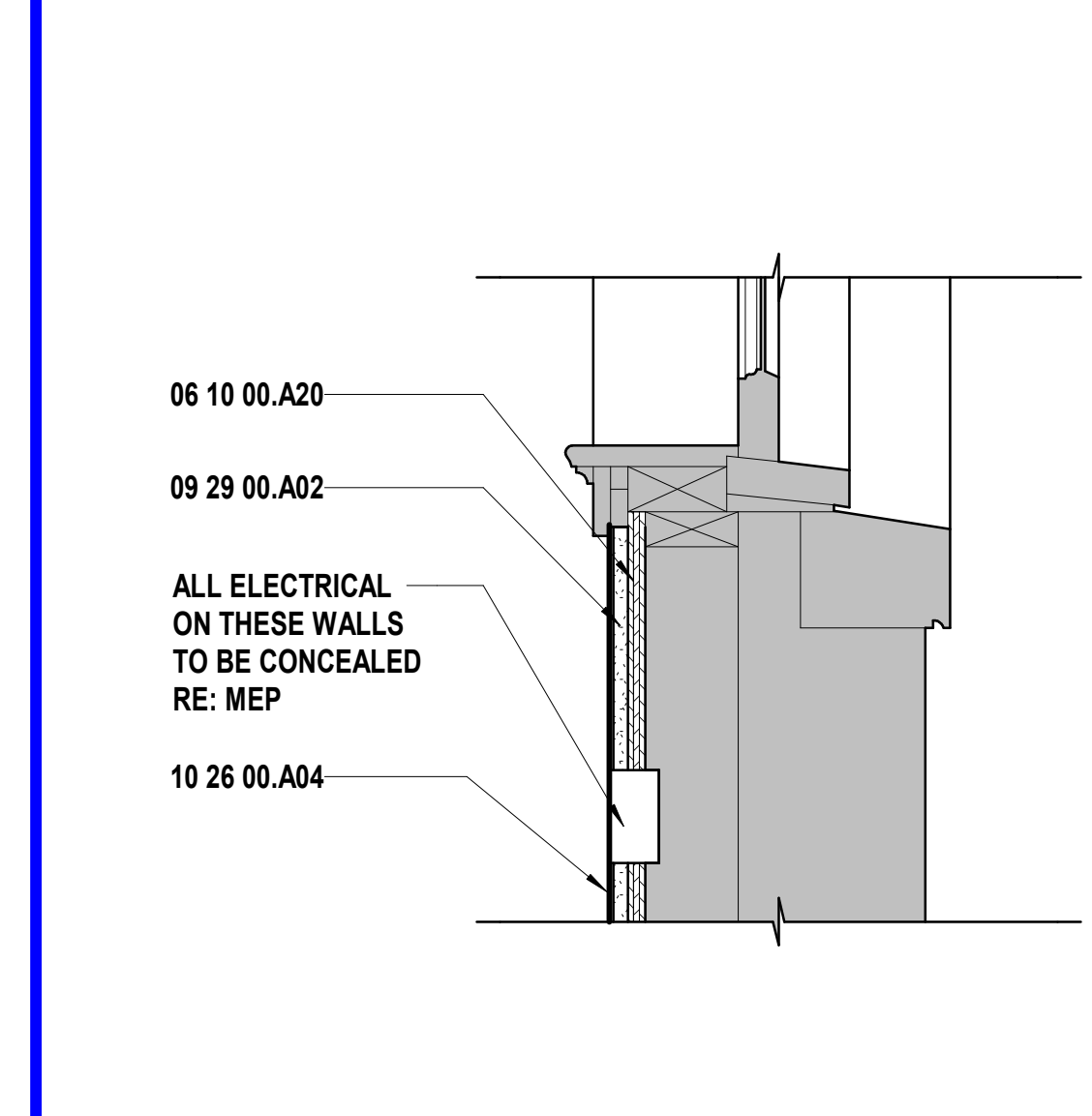
H7 Scale 1/4" = 1'-0" Casework Elevation - Workroom B115 - E



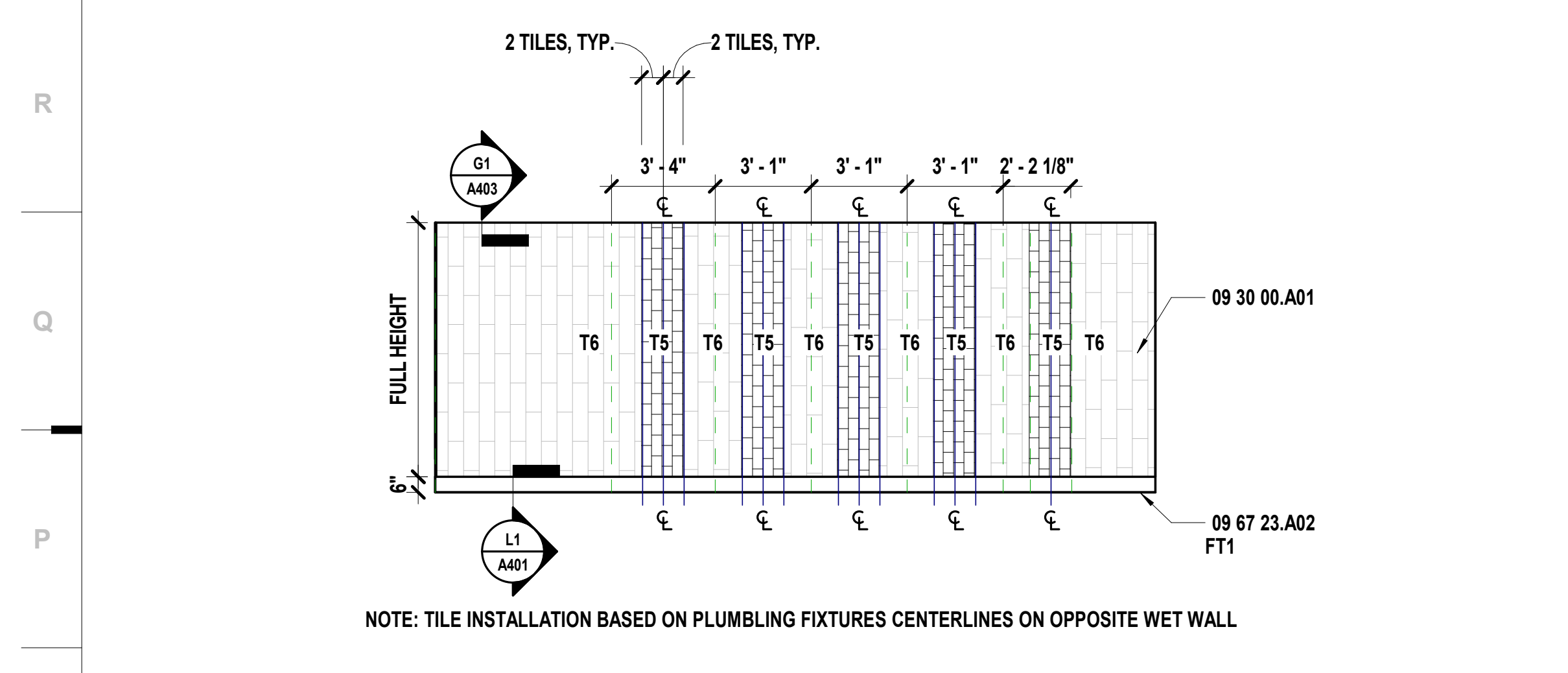
D7 Scale 1/2" = 1'-0" Section - Casework / Open Storage - Restroom B122a



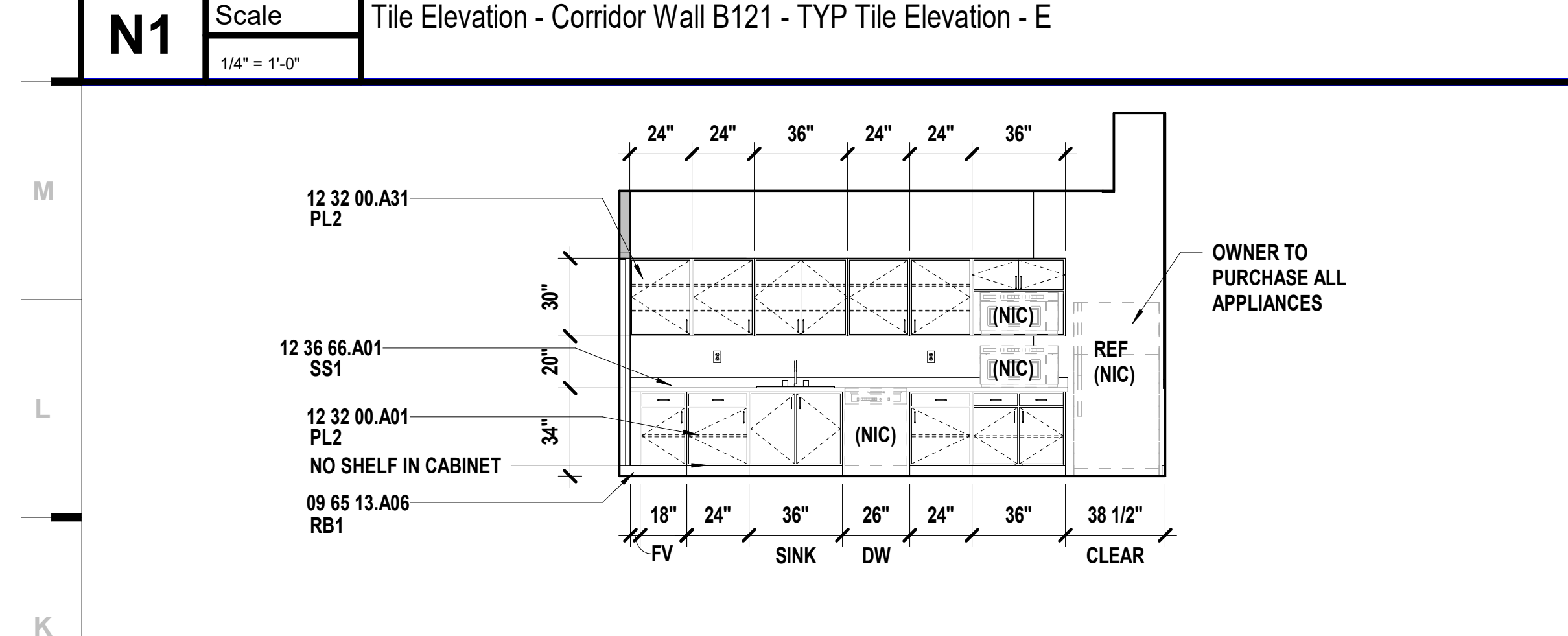
D10 Scale 1/4" = 1'-0" Tile Elev - RR B117 - E



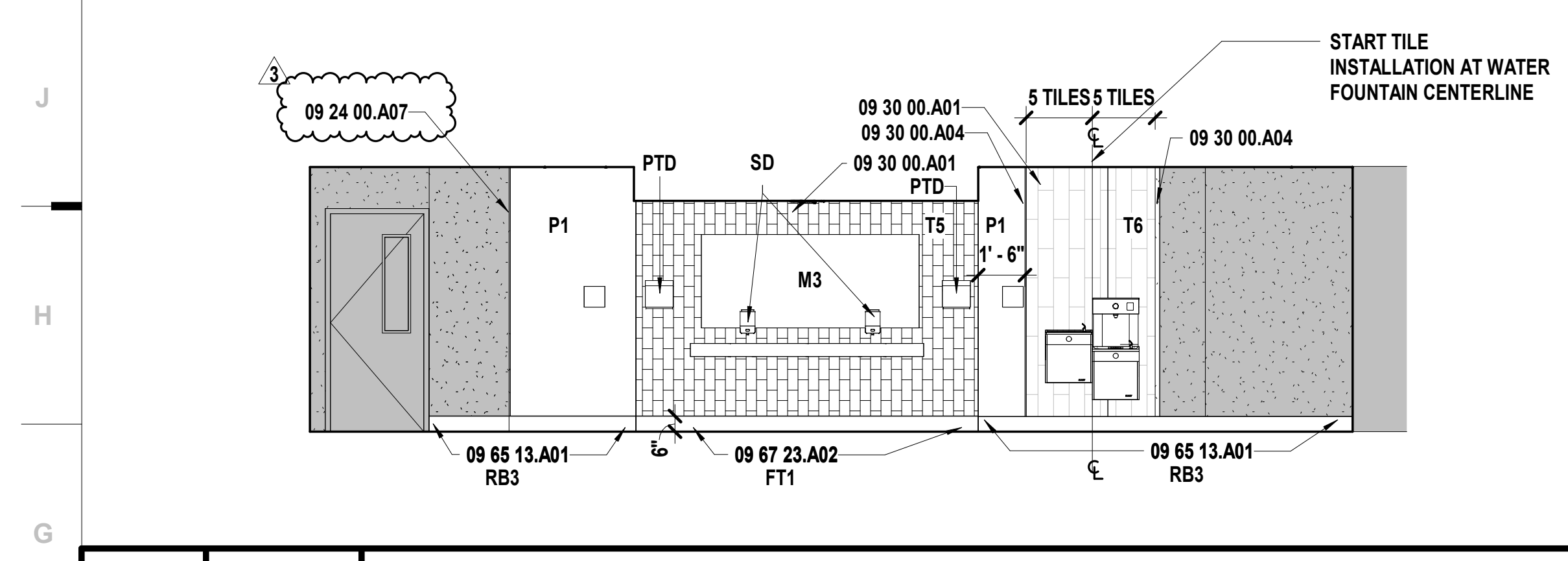
D14 Scale 1 1/2" = 1'-0" Section Detail - Nurse B122 Perimeter Wall Repair



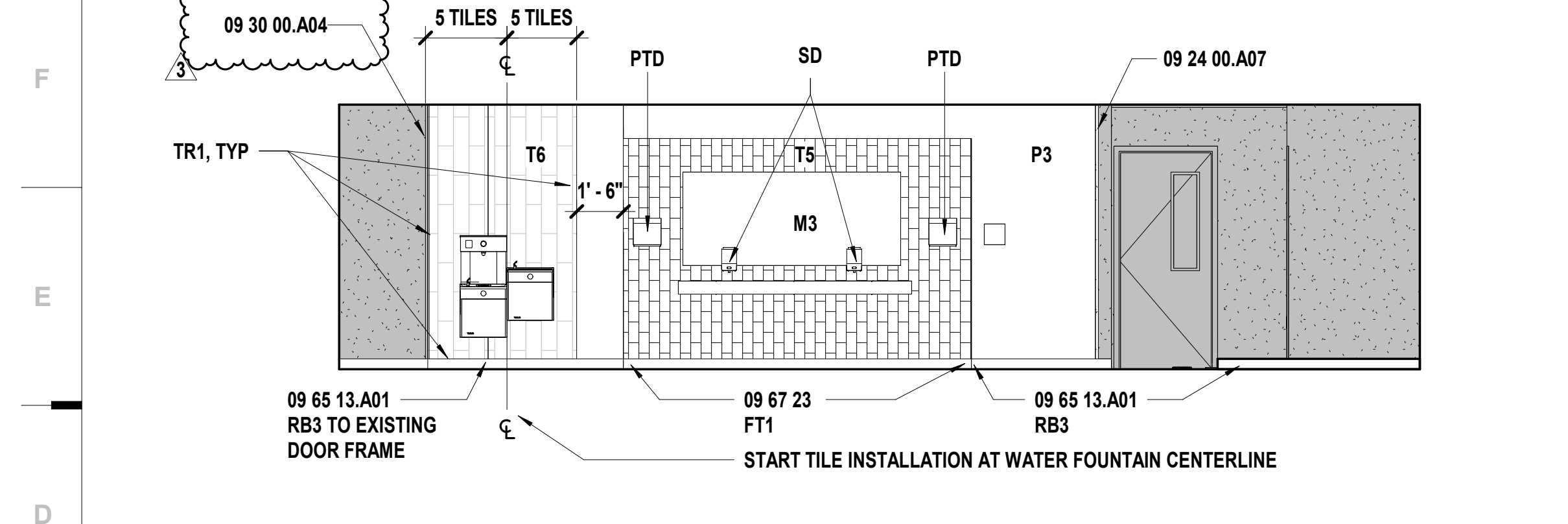
N1 Scale 1/4" = 1'-0" Tile Elevation - Corridor Wall B121 - TYP Tile Elevation - E



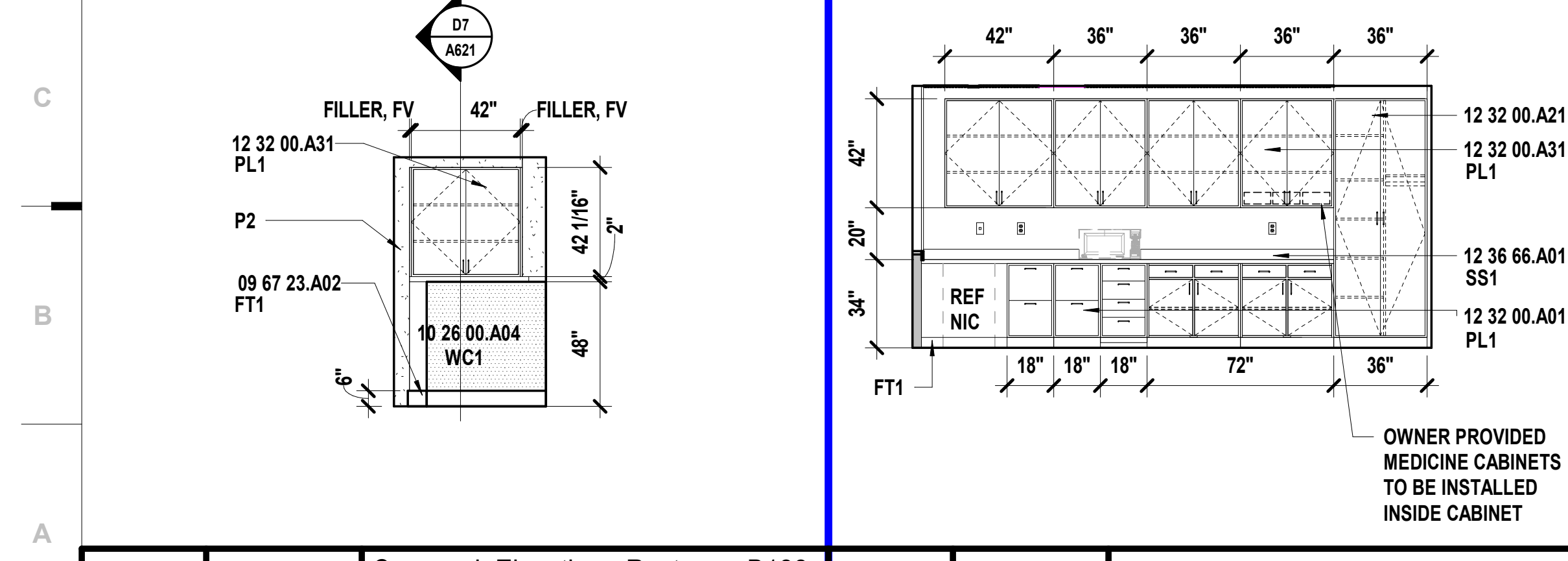
K1 Scale 1/4" = 1'-0" Casework Elevation - Staff Lounge B114 - W



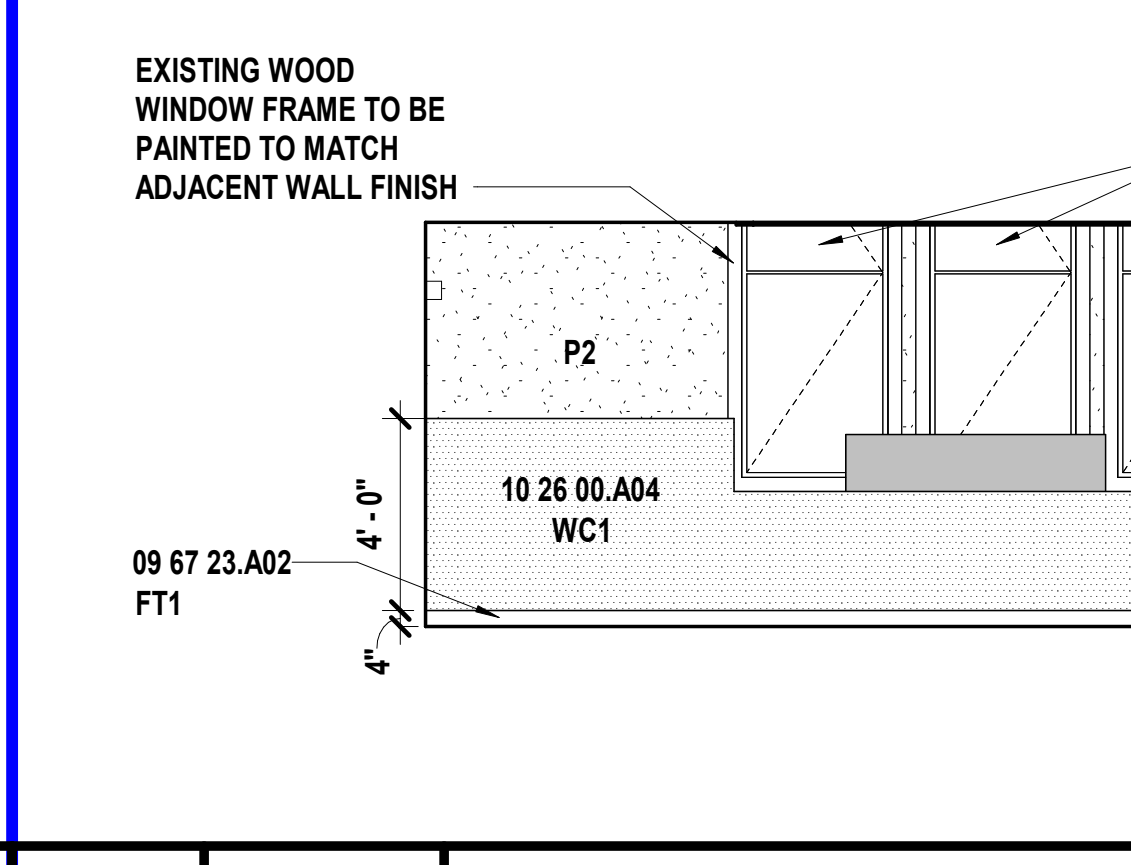
G1 Scale 1/4" = 1'-0" Interior Elevation - Restroom Entry A108 - W



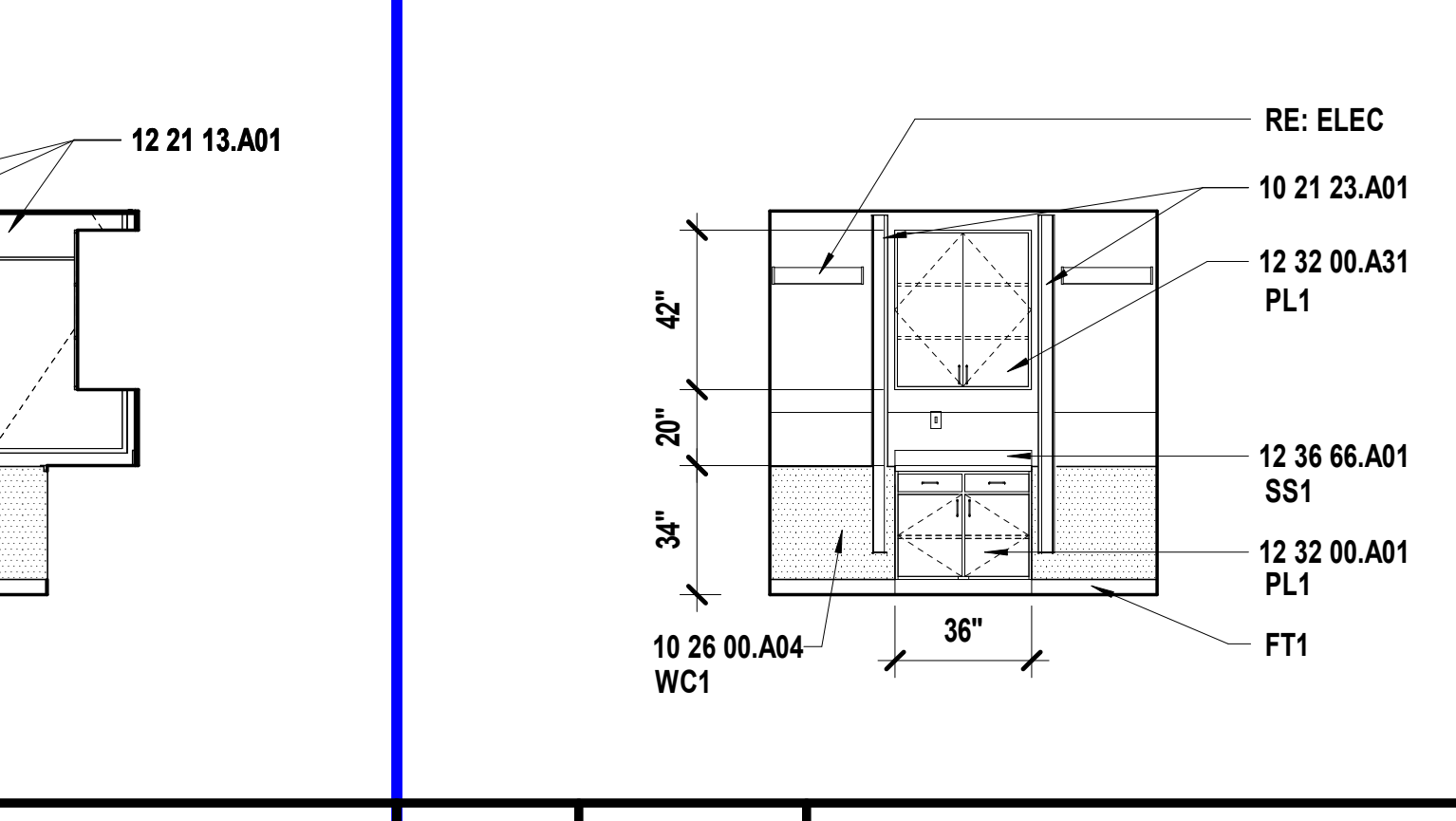
D1 Scale 1/4" = 1'-0" Interior Elevation - Restroom Entry B121 - E



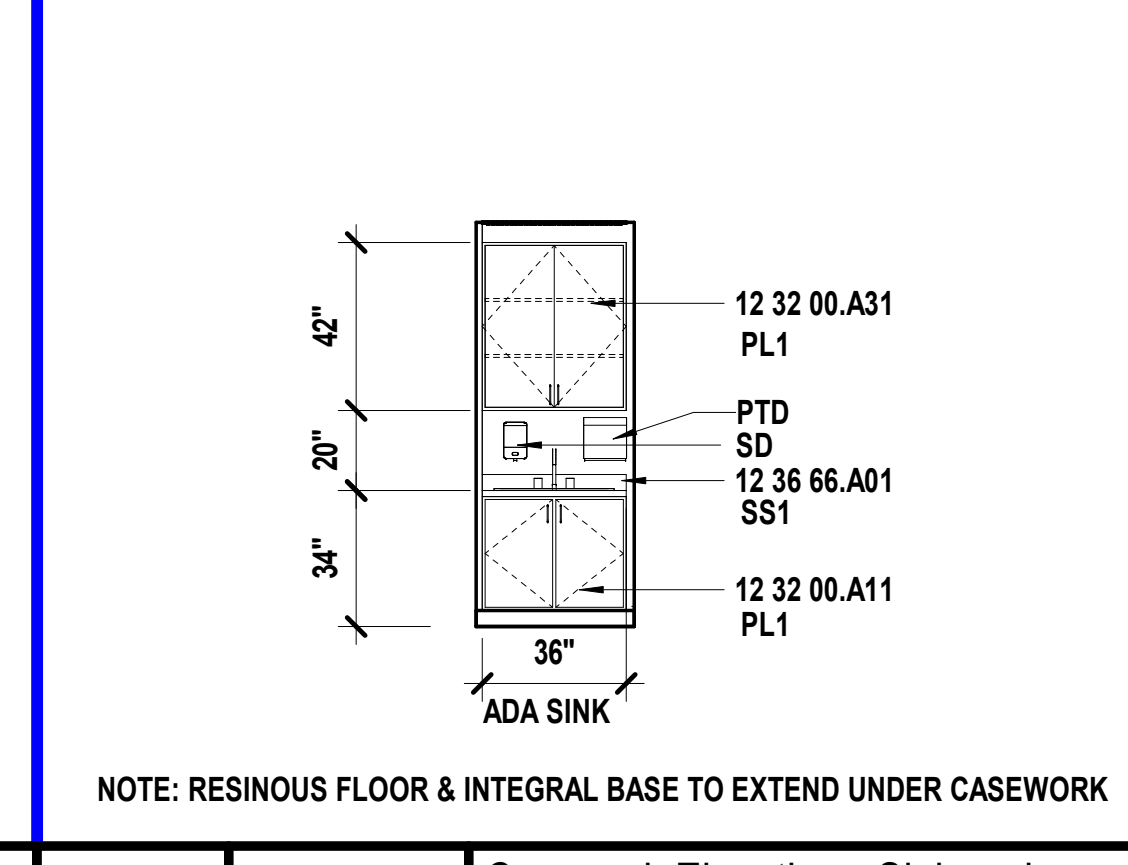
A1 Scale 1/4" = 1'-0" Casework Elevation - Restroom B122a - E



A7 Scale 1/4" = 1'-0" Wall Elevation at Windows - Nurse B122 - E



A11 Scale 1/4" = 1'-0" Casework Elevation - Nurse B122 - N

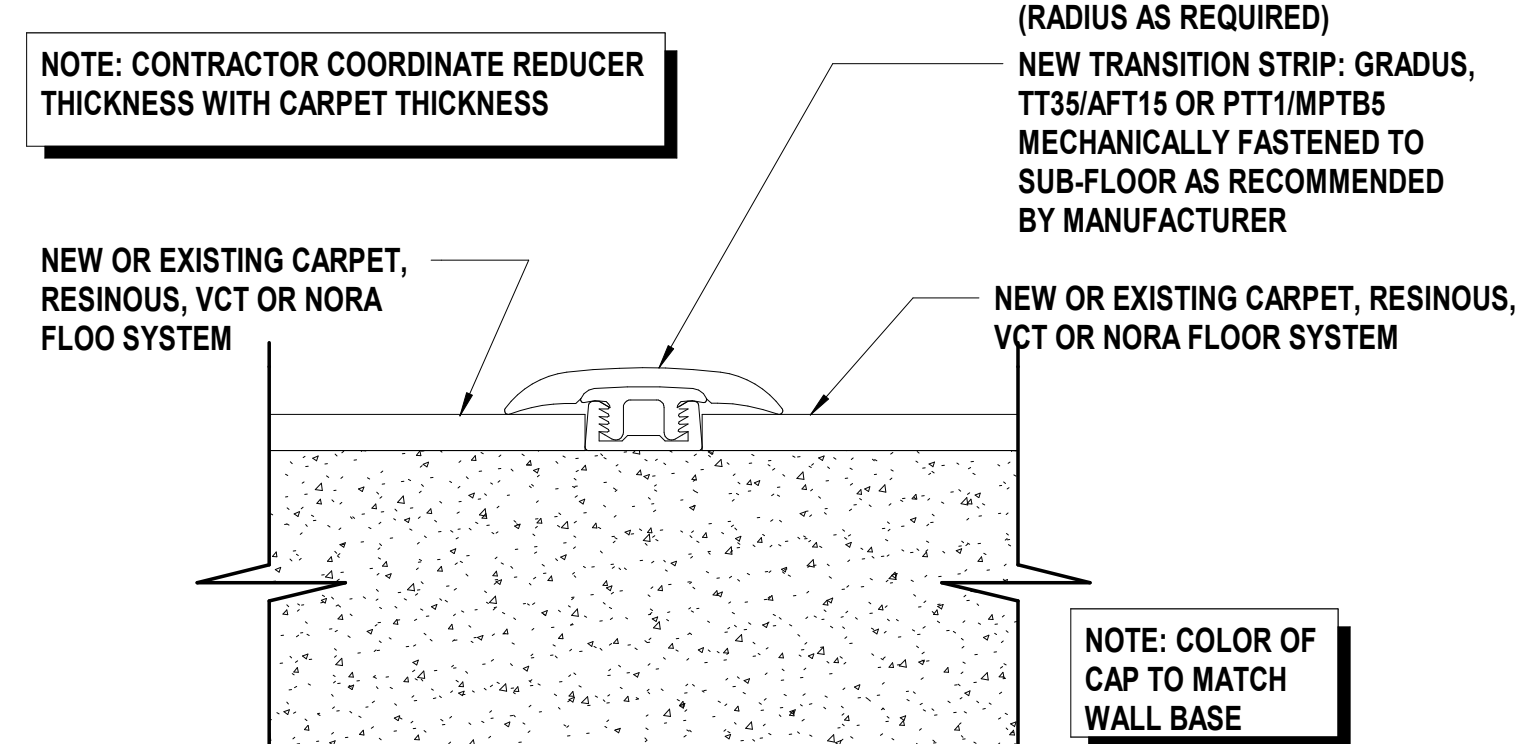
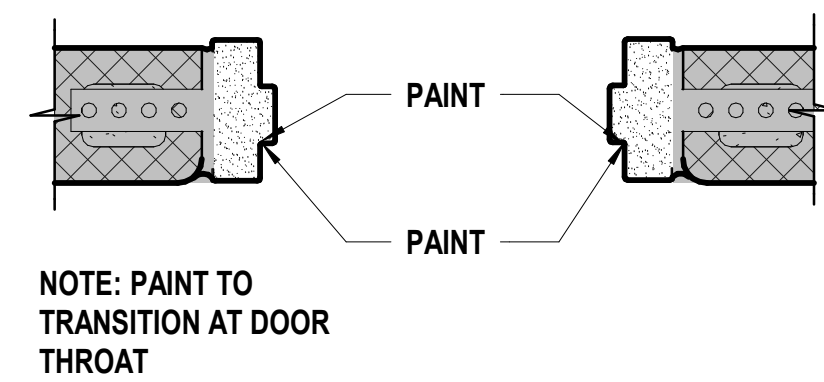


A14 Scale 1/4" = 1'-0" Casework Elevation - Sink and Eyewash Station B122 - N

12/21/2023 11:59:13 AM

GENERAL FINISH NOTES

- REFER TO FINISH FLOOR PLANS, REFLECTED CEILING PLANS, ELEVATIONS, AND DETAILS FOR EXTENT OF MULTIPLE FINISHES.
- DO NOT PAINT NATURAL OR MANUFACTURED STONE, BRICK, GLAZED BLOCK OR ANY OTHER PREFINISHED MATERIALS.
- DO NOT PAINT ALUMINUM OR OTHER NON-FERROUS METALS THAT ARE PREFINISHED.
- MATCH VERTICAL FINISH OF ALL INTERIOR GYPSUM BOARD SOFFITS TO HORIZONTAL FINISH AS NOTED ON RCP OR ROOM FINISH SCHEDULE, UNO.
- PAINT ALL EXPOSED CEILINGS DESIGNATED AS 'OTS' AS INDICATED ON ROOM FINISH SCHEDULE. PAINTING INCLUDES, BUT IS NOT LIMITED TO: EXPOSED STRUCTURE, JOISTS, METAL DECKING, EXISTING TECTUM PANELS, DUCTWORK AND MECHANICAL EQUIPMENT.
- PAINT ALL EXPOSED STEEL, UNO.
- PAINT ALL INTERIOR HOLLOW METAL DOORS AND FRAMES TO MATCH ADJACENT WALL, UNO.
- PAINT OR FINISH THE FOLLOWING ITEMS TO MATCH ADJACENT PAINT OR FINISH:
 - ELECTRICAL PANELS IN FINISHED ROOMS
 - GRILLES, LOUVERS ETC. PRIMED OR SPECIFIED TO BE PAINTED
 - UNFINISHED SPEAKER OUTLET GRILLES
 - VISIBLE PORTIONS OF DUCTWORK AND MECH EQUIPMENT BEHIND VENTS, GRILLES AND DIFFUSERS



K1 Scale 1/12" = 1'-0" HM Jamb Frame Finish Where Noted

K5 Scale 1/2" = 1'-0" Flooring Reducer Strip Detail

MATERIAL FINISH LEGEND

| MATERIAL | ID | KEYNOTE | MANUFACTURER | STYLE/MODEL NO | COLOR/FINISH | COMMENTS |
|------------------------------|------|--------------|------------------|----------------------------------|-----------------------------------|--------------------------------|
| Carpet | C3 | 09 68 13.A01 | Interface | Detours Ahead 1472302500 | 24x24, 105160 Steel/Tonal | Install Ashlar |
| Ceiling | CLG3 | 09 51 13.A01 | Armstrong | 1772 Dune 24" X 24" X 5/8" | White | |
| Ceiling | CLG4 | 09 51 13.A01 | Armstrong | 1773 Dune 24"x 48" x 5/8" | White | |
| Concrete Finish | CON1 | 03 30 00.A21 | | | Clear Sealed Concrete Finish | |
| Fabric | F2 | 10 21 23.A01 | Maharam | Moderate 2, 511519 | 009 Calming | |
| Floor (Poured) Topping | FT1 | 09 67 23.A01 | Desco | Cremona TG | 33% SW7653, 32% SW7018, 35%SW7625 | Integral Cove Base |
| High Performance Coating | HP1 | 09 91 23 | Sherwin Williams | SW7011 | Natural Choice | |
| High Performance Coating | HP2 | 09 91 23 | Sherwin Williams | SW7015 | Repose Gray | |
| Paint | P1 | 09 91 23 | Sherwin Williams | SW7011 | Natural Choice | |
| Paint | P2 | 09 91 23 | Sherwin Williams | SW7015 | Repose Gray | |
| Paint | P3 | 09 91 23 | Sherwin Williams | SW6524 | Commodore | |
| Plastic Laminate | PL1 | 12 32 00 | Formica | 8826-58 | Neutral Twill | |
| Plastic Laminate | PL2 | 12 32 00 | Wilsonart | 7953-38 | Harvest Maple | |
| Resilient Base & Accessories | RB3 | 09 65 13.A01 | Roppe | 4" Cove | 123 Charcoal | |
| Resilient Base & Accessories | RB4 | 09 65 13.A01 | Roppe | Match Existing Profile | 139 Deep Navy | |
| Resilient Flooring | RF1 | 09 65 19.A01 | Interface | Brushed Lines | A01604 Galena | Install Ashlar |
| Resilient Flooring | RF2 | 09 65 19.A01 | Interface | Brushed Lines | A01605 Graphite | Install Ashlar |
| Simulated Stone | SS1 | 12 36 66.A01 | Corian | Solid Surface | Everest | |
| Tile | T3 | 09 30 00.A01 | Daltile | Colorwheel 4X16 | 0790 Artic White | |
| Tile | T5 | 09 30 00.A01 | Daltile | Colorwheel 4X8 | 1174 Sea Breeze | |
| Tile | T6 | 09 30 00.A01 | Daltile | Articulo 6X18 | AR06 Editorial White | |
| Trim | TR1 | 09 30 00.A04 | Schluter | Schiene | | |
| Trim | TR2 | 06 40 23.A24 | Fry Reglet | Millwork Trim - L Channel | | 3/4" MWCL75, ANODIZED ALUMINUM |
| Wall Coverings | WC1 | 10 26 00.A04 | Korogard | .040" Sheet | Lava | |
| Wood | WD1 | 06 20 23.A01 | Match Existing | Match Existing Species | Match Existing Clear Stain | |
| Window Film | WF | | 3M | Matte SH2MAOW 1250, Opaque White | | |
| Fabric Wrapped Tack Panel | WP1 | 09 77 23.A01 | CF Stinson | 4'-0" W x 8'-0" H | TBD | Alternate 2 |

ROOM FINISH SCHEDULE

| NO | ROOM Name | FLOOR | | WALLS | | | | CEILING Finish | Finish Remarks |
|-------|----------------|---------|------|--------|--------|--------|--------|----------------|----------------|
| | | Finish | Base | North | East | South | West | | |
| A103A | Girls | FT1 | FT1 | T6 | T5 | T5/T6 | T5/T6 | CLG3/HP1 | |
| A103B | Boys | FT1 | FT1 | T6 | T5/T6 | T5/T6 | T5 | CLG3/HP1 | |
| A106b | Staff Restroom | FT1 | FT1 | T5/T6 | HP2 | HP2 | HP2 | HP1 | |
| A108 | Restroom Entry | FT1 | FT1 | T5 | T5/T6 | T5/T6 | T5/T6 | HP1 | |
| A108A | Girls | FT1 | FT1 | T6 | T5 | T5/T6 | T5/T6 | CLG3/HP1 | |
| A108B | Boys | FT1 | FT1 | T6 | T5/T6 | T5/T6 | T5 | CLG3/HP1 | |
| B100 | Office | C3 | RB3 | P2 | P2 | P2 | P2 | CLG3 | |
| B101 | Principal | C3 | RB3 | P2 | P2 | P3 | P2 | CLG3 | |
| B102 | Asst Principal | C3 | RB3 | P2 | P2 | P3 | P2 | CLG3 | |
| B110 | Office | C3 | RB3 | P2 | P2 | P2 | P2 | CLG3 | |
| B110a | Office | C3 | RB3 | P2 | P2 | P2 | P2 | CLG3 | |
| B111 | Office | C3 | RB3 | P2 | P2 | P2 | P2 | CLG3 | |
| B112 | PE Storage | CON1 | RB3 | P2 | P2 | P2 | P2 | OTS | |
| B112a | Office | C3 | RB3 | P2 | P2 | P2 | P2 | CLG3 | |
| B112b | Elec | CON1 | RB3 | P2 | P2 | P2 | P2 | OTS | |
| B114 | Staff Lounge | RF1/RF2 | RB3 | P2 | P2 | P2 | P2 | ETR/HP1 | 2 |
| B114a | Staff Restroom | FT1 | FT1 | HP2 | HP2 | HP2 | HP2 | HP1 | |
| B115 | Workroom | RF1/RF2 | RB3 | P2 | P2 | P2 | P2 | CLG3 | |
| B115a | Corridor | C3 | RB4 | P2 | P2 | P2 | P2 | CLG3 | |
| B116 | Lactation Room | FT1 | FT1 | HP2 | HP2 | HP2 | HP2 | CLG3 | |
| B117 | Restroom | FT1 | FT1 | HP2 | HP2 | HP2 | HP2 | CLG3 | |
| B121 | Restroom Entry | FT1 | FT1 | T5 | T5/T6 | T5/T6 | T5/T6 | HP1 | |
| B122 | Nurse | FT1 | FT1 | P2/WC1 | P2/WC1 | P2/WC1 | P2/WC1 | EXIST | 3 |
| B122a | Restroom | FT1 | FT1 | HP1 | HP1 | HP1 | T5/T6 | CLG4 | |

ROOM SCHEDULE REMARKS

- PROVIDE LEVEL 5 FINISH FOR GYPSUM BOARD SURFACE WHERE WGX IS DESIGNATED. RE: FINISH FLOOR PLANS AND INTERIOR ELEVATIONS FOR TRANSITION CLARIFICATION.
- PAINT EXISTING WOOD WINDOW FRAMES TO MATCH ADJACENT WALL FINISH.
- PROVIDE 10 26 00.A04 (WC1) ON ALL WALL SURFACES EXCEPT WHERE INDICATED AT 48" H A.F.F., UNO.
- PROVIDE NEW WINDOW TREATMENTS.

SHEET KEYNOTE LEGEND

we design the future®
 1828 Walnut Street Suite 922
 Kansas City, MO 64108
 1 816-442-7100
 115 Wilcox Street Suite 210
 Castle Rock, CO 80104
 1 720-949-1689
 HOLLISANDMILLER.COM
 Hollis + Miller Architects
 Missouri State Certificate of Authority
 Architecture # 0000161
Structural Engineer
 Bob D Campbell
 State Certificate of Authority #000442
 4338 Bellevue Ave
 Kansas City, MO 64111
 816.531.4144
Smith & Boucher
 Mechanical/Electrical/Plumbing
 State Certificate of Authority #ECC000178
 25501 Valley Parkway, Suite 200
 Olathe, KS 66061
 913.345.2127 phone

CONSTRUCTION DOCUMENTS

Franklin Elementary School
 Liberty Public Schools
 201 W Mill St.
 Liberty, MO 64068

SHEET NOTES

- REFER TO SHEET G000 FOR SHEET INDEX
- COORDINATE LOCATIONS WHERE BACKING REQUIRED FOR WALL HUNG CASEWORK, MARKERBOARDS, AND TECHNOLOGY
- COLOR/MATERIAL TRANSITIONS ARE NOTED WHEN THEY DO NOT OCCUR AT INSIDE CORNERS
- REFER TO MEP SHEETS FOR LOCATION DIAGRAM OF SWITCHES, THERMOSTATS, FIRE ALARM STROBES TO BE MOUNTED ADJACENT TO ENTRY DOORS OR AT OUTSIDE CORNERS WITHIN ROOMS
- COORDINATE WITH ELECTRICAL SHEETS FOR HEIGHT OF OUTLETS A.F.F. AND/OR ABOVE COUNTERTOPS
- COORDINATE WITH MECHANICAL SHEETS FOR LOCATIONS OF WALL MOUNTED GRILLES AND REGISTERS
- ALL EXPOSED SURFACES TO RECEIVE PLASTIC LAMINATE
- ALL BACKSPASH MATERIAL TO MATCH COUNTERTOP MATERIAL, UNO
- PROVIDE 4" BACKSPASH, UNO
- PROVIDE 1" OVERHANG AT ALL COUNTERTOPS, UNO
- PROVIDE ONE 2" DIAMETER GROMMET PER 30 INCH OF KNEE-SPACE - RECEPTION COUNTERS AND OTHER LOCATIONS - COORDINATE EXACT LOCATION WITH OWNER
- REFER TO PLUMBING DRAWINGS FOR LOCATIONS OF SINKS AND OTHER PLUMBING FIXTURES LOCATED WITHIN CASEWORK
- ALL BASE CABINETS ARE TO BE 24" DEEP, UNO
- ALL UPPER CABINETS ARE TO BE 16" DEEP, UNO
- ALL TALL STORAGE AND WARDROBE CABINETS ARE TO BE 24" DEEP, UNO
- ALL SCIENCE AND NURSE CASEWORK TO HAVE LOCKS
- FILE DRAWERS TO HAVE LOCKS
- ALL WARDROBE CABINETS TO HAVE LOCKS
- COORDINATE DOOR CONTROL BUTTON LOCATION AT RECEPTION DESK WITH OWNER
- PROVIDE WOOD CLEAT AT BACK AND SIDE WALLS OF ALL COUNTERTOPS WITH NO BASE CABINET BELOW

| # | Description | Date |
|---|-------------|----------|
| 3 | Addendum 3 | 12.21.23 |



JOB NO: 23027
 DRAWN BY: NR
 CHECKED BY: JB
 DATE: 11.22.2023

A681