

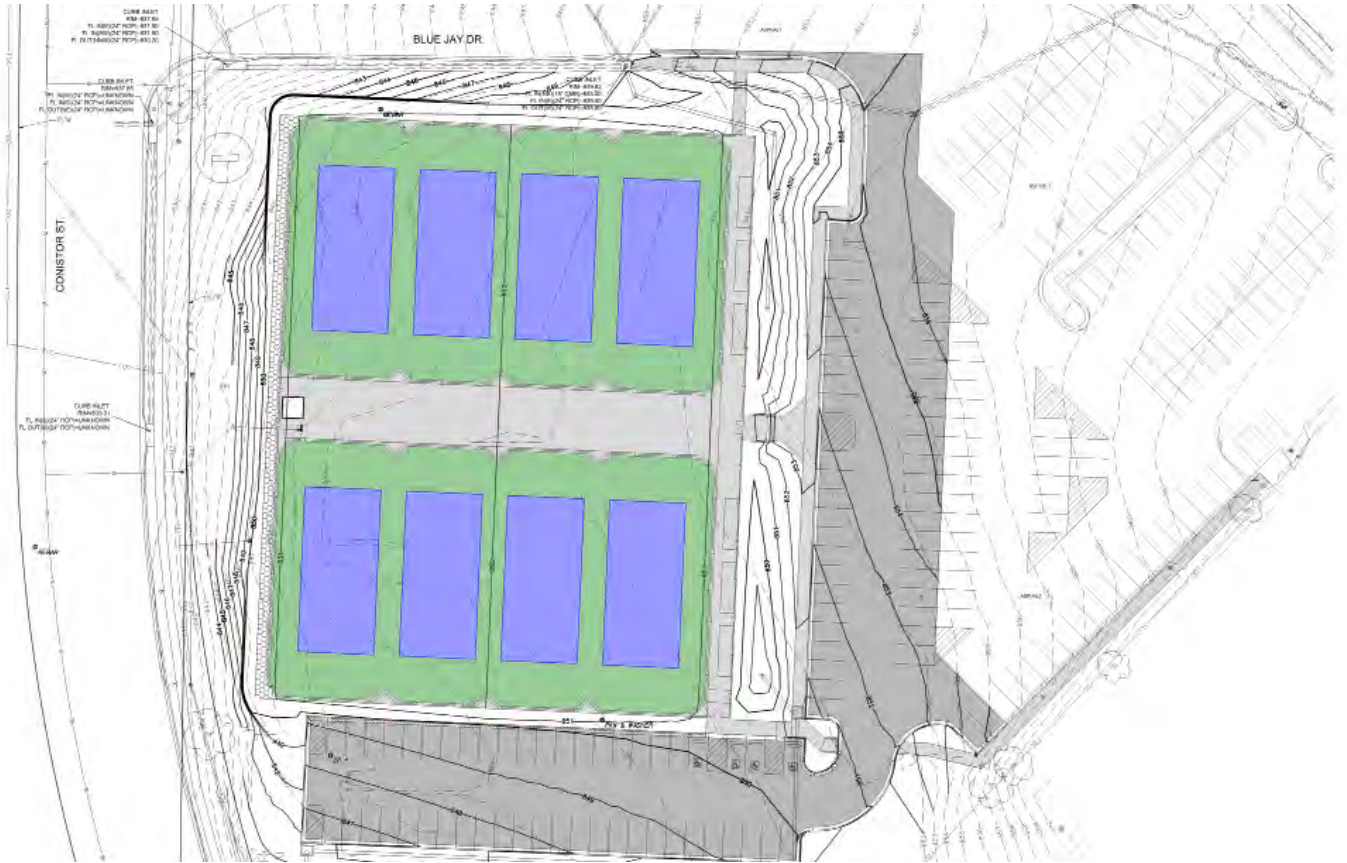


2023 BOND

MAJOR PROJECTS UPDATE

SEPTEMBER 2023





Liberty High School Tennis

- (8) Competition Tennis Courts
- Post-Tensioned Concrete slab with DecoTurf brand acrylic surfacing
- 10'-0" tall perimeter fence with windscreen
- Retaining wall and asphalt parking lot improvements

Construction Start: Spring 2023

Construction Complete: Fall 2023

**WEEKLY
PROGRESS
REPORT**

Liberty Public Schools



PROJECT STATUS

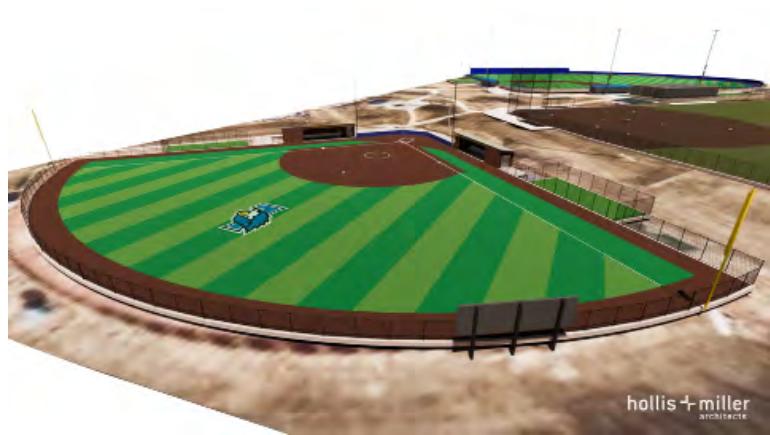
UPCOMING





WEEKLY PROGRESS REPORT





Liberty High School Baseball/Softball Complex

Baseball Field

- Synthetic Turf Playing Surface & Tension Backstop Netting
- Upgraded Pitching and Batting Practice areas

Softball Field

- New Dugouts
- Reduced Field Dimensions to 210' outfield, 25' Foul Territory, Softball
- Synthetic Turf Playing Surface & Tension Backstop Netting
- Additional Bullpen Space

Multi-purpose Field

- Revised grading, perimeter fencing and infield improvements

Construction Start: Fall 2023

Construction Complete: Summer 2024



Liberty North High School Baseball/Softball Complex

Baseball Field

- Synthetic Turf Playing Surface & Tension Backstop Netting
- Upgraded Center field Batter's Eye
- Additional Bullpen Space
- ChampionWall PVC Athletic Fence System at Outfield

Softball Field

- Increased Field Dimensions - 194'(L) - 200'(C) - 195'(R)
- Synthetic Turf Playing Surface & Tension Backstop Netting
- Additional Bullpen Space

Construction Start: Fall 2023

Construction Complete: Summer 2024

**WEEKLY
PROGRESS
REPORT**

Liberty Public Schools



PROJECT STATUS

UPCOMING





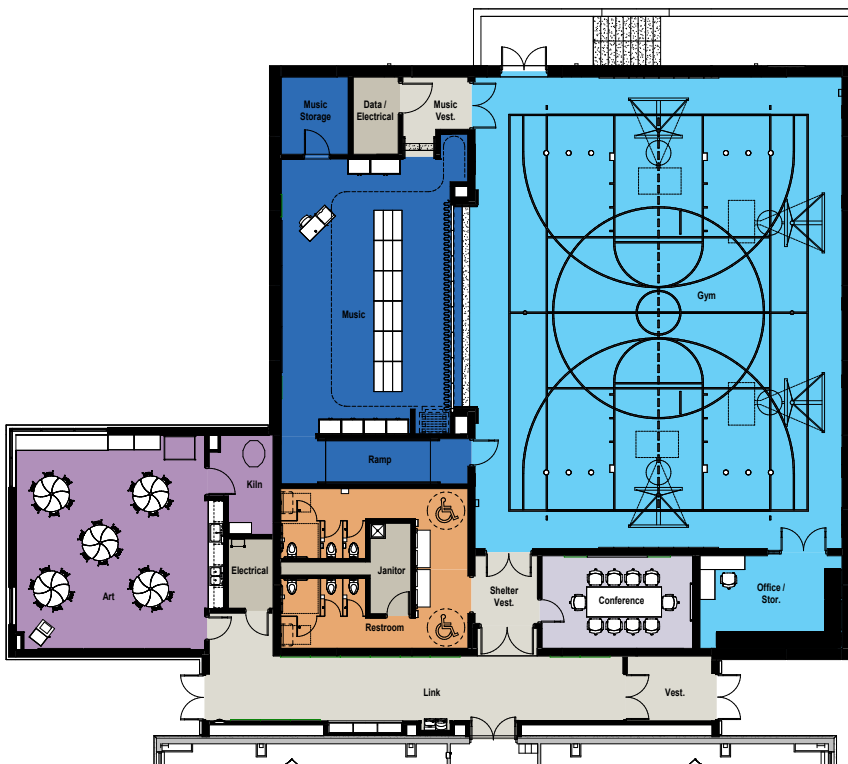
WEEKLY PROGRESS REPORT





EPiC Elementary Addition

- 8000 Square Foot Building Addition & Renovation
- New Gym & Performance Space
- New Art Classroom
- Renovated Restrooms, Mother's Room and New Walk-in Cooler / Freezer
- Construction Start: Spring 2024
- Construction Complete: Summer 2025



▲ Addition

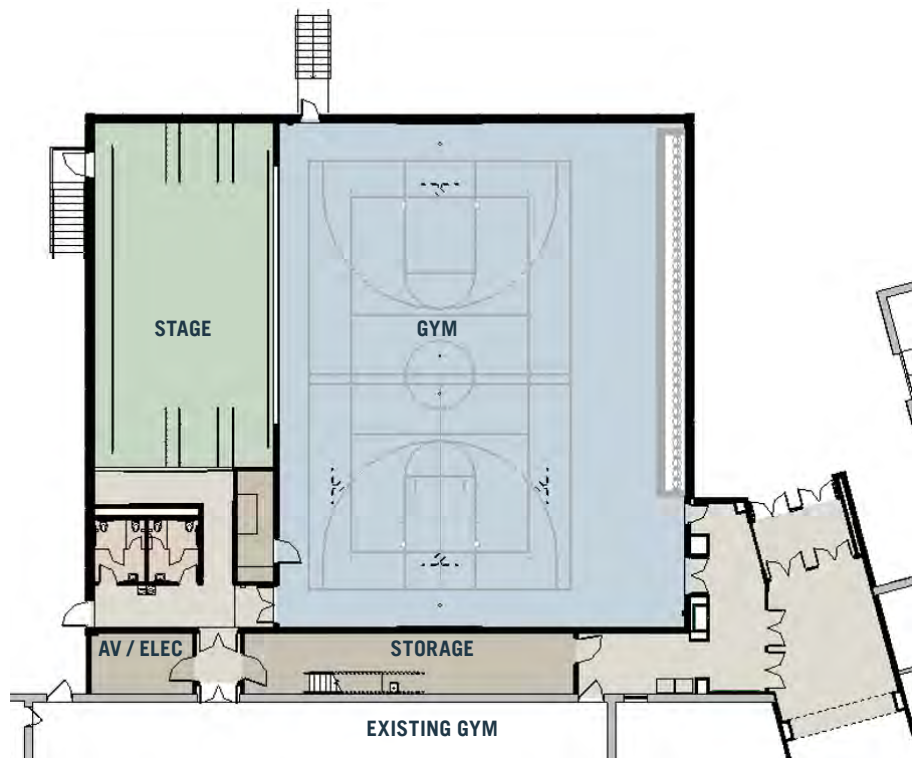


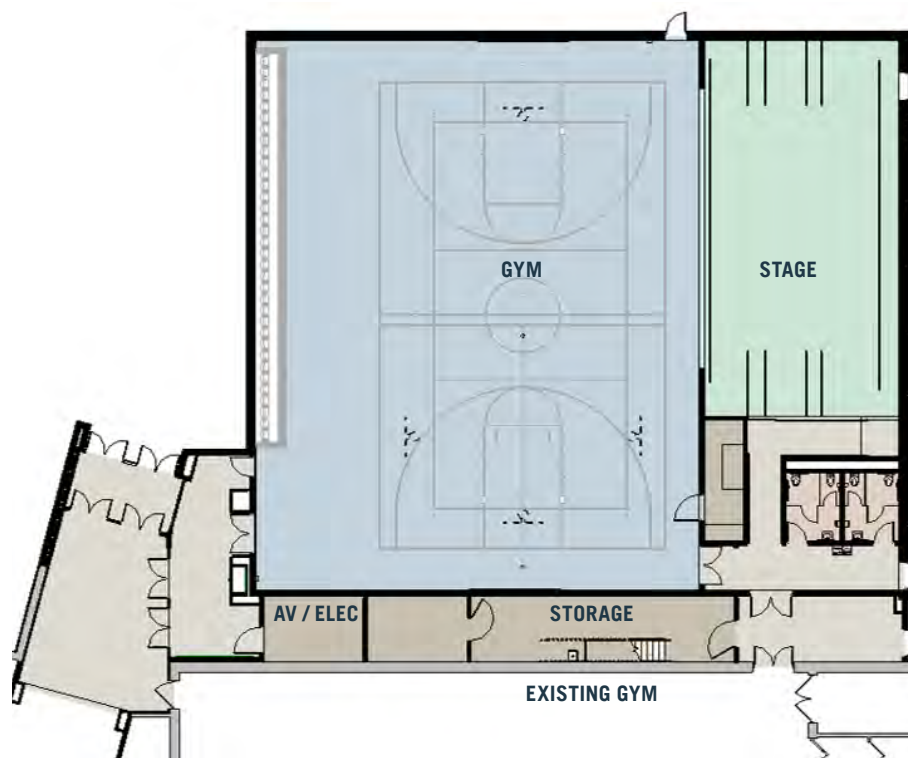
▲ Renovation Area



Discovery Middle School

- 11,000 square foot addition
 - ICC 500 rated shelter
 - Additional PE space
- Raised performance stage
- Theatrical AV and lighting
- Increased audience capacity
 - Additional storage
- Projected Construction Schedule:
Spring 2024–Summer 2025





South Valley Middle School

- 11,000 square foot addition
- ICC 500 rated shelter
- Additional PE space
- Raised performance stage
- Theatrical AV and lighting
- Increased audience capacity
- Additional storage
- Projected Construction Schedule: Spring 2024–Summer 2025



hollis + miller



hollis + miller



hollis + miller



hollis + miller

Distribution Center

- 29,000 Square Foot New Building
- Storage Warehouse
- Dry Food Warehouse
- Large Storage Freezer
- New Office Space
- New Copy Center
- Additional Parking
- Projected Construction Schedule:
Fall 2023–Spring 2025



Fine Arts
 Kid's Zone
 Technology
 Shared Amenities
 Building Systems
 Future Phase



District Technology Center

- Renovated workspace for District’s Technology, Fine Arts, and Kid’s Zone departments
- Shell space for future growth
- Minor exterior patch + repair improvements
- Projected Construction Schedule: Fall 2023 - Summer 2024