



**Suffield Public Schools  
Suffield, CT**

**School Year 2023-24 Enrollment Projection Report**

*Copyright, New England School Development Council, 2023*

# Table of Contents

Section	Page
Enrollment Summary.....	1
Historical Enrollment Table.....	2
Historical Enrollment Graph.....	3
Projected Enrollment Table.....	4
Projected Enrollment Graph.....	5
Historical & Projected Enrollment Graph.....	6
Historical & Projected Enrollment in Grade Combinations Line Graph.....	7
Historical & Projected Enrollment in Grade Combinations Stacked Column Graph.....	8
Birth to Kindergarten Relationship Graph.....	9
Additional Information .....	10
New England's PK-12 Enrollment Trends.....	11
Methodology, Reliability and Use of this Document.....	12

# Enrollment Summary

NESDEC is pleased to send you this report displaying the past, present, and projected enrollments for your District. It is important to update enrollment projections every year to identify changes in enrollment patterns. Ten-year projections are designed to provide your District with yearly, up-to-date enrollment information that can be used by boards and administrators for effective planning and allocation of resources.

Included in this report are graphs representing historical and projected grade-by-grade enrollments, as well as historical and projected enrollments in grade combinations. We received the enrollment data from the District, and we assume that the method of collecting this data has been consistent from year to year.

Enrollment projections are more reliable in Years #1-4 in the future and less reliable in the “out-years.” Projections six to ten years out may serve as a guide to future enrollments and are useful for planning purposes. In light of this, NESDEC has added a “Spring Update Refresher” enrollment projection at no cost to affiliates. For more information, please refer to the Methodology, Reliability and Use of this Document section.

NESDEC enrollment projection fell within 8 students of the K-12 total, 1,984 students projected vs. 1,976 enrolled.

Births increased by 9 from a previous ten-year average of 97 to a projected average of 106. In most districts, Grades 1-8 are very stable in enrollments. However, there have been increases in 5 of the 8 most recent years, leading to a net increase averaging 10 students per year.

Over the next three years K-2 enrollments are projected to increase by 38 students, Grades 3-5 enrollments are projected to decrease by 11 students, Grades 6-8 enrollments are projected to increase by 49 students, and Grades 9-12 enrollments are projected to decrease by 40 students, as they move through the grades.

# Historical Enrollment

School District: Suffield, CT

11/2/2023

Historical Enrollment By Grade																			
Birth Year	Births*	School Year	PK	K	1	2	3	4	5	6	7	8	9	10	11	12	UNGR	K-12	PK-12
2008	102	2013-14	55	133	134	159	141	181	174	180	212	202	200	216	213	212	0	2357	2412
2009	105	2014-15	67	141	138	144	166	143	192	175	182	214	211	194	210	205	0	2315	2382
2010	85	2015-16	61	140	156	141	152	171	143	193	184	184	232	204	192	200	0	2292	2353
2011	91	2016-17	50	129	146	155	146	153	172	147	196	181	193	225	204	184	0	2231	2281
2012	75	2017-18	53	121	129	145	145	141	154	168	151	203	207	190	226	185	0	2165	2218
2013	115	2018-19	36	129	129	133	139	142	138	158	167	151	215	204	188	203	0	2096	2132
2014	111	2019-20	40	138	139	130	133	135	145	140	158	173	172	216	201	182	0	2062	2102
2015	107	2020-21	39	134	137	141	127	129	136	141	141	154	201	176	208	191	0	2016	2055
2016	94	2021-22	37	146	143	141	139	129	134	142	146	153	166	188	168	198	0	1993	2030
2017	89	2022-23	39	139	152	148	150	142	134	148	150	147	157	161	195	163	0	1986	2025
2018	93	2023-24	47	120	141	151	150	154	142	136	153	146	174	158	155	196	0	1976	2023

\*Birth data provided by Public Health Vital Records Departments in each state.

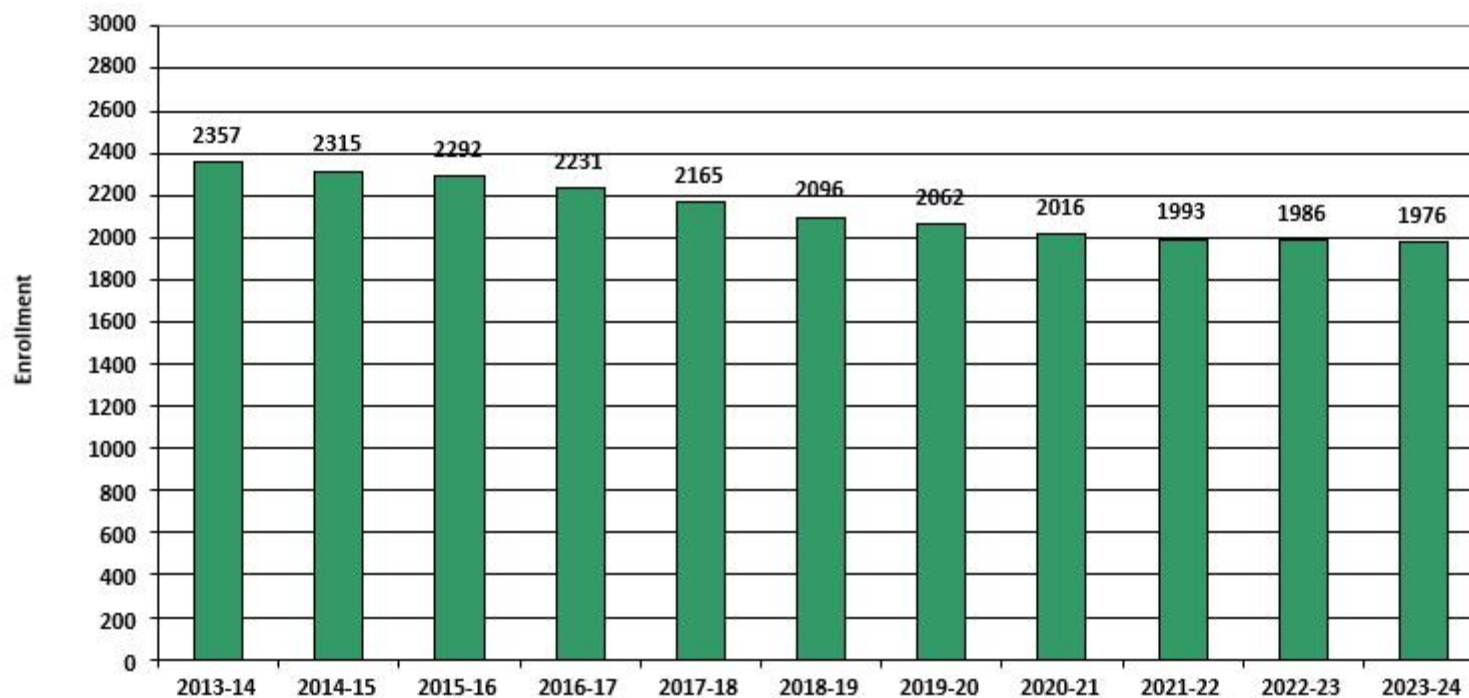
\*\* < 10 Not reported, to protect subgroups with fewer than 10 students.

Historical Enrollment in Grade Combinations									
School Year	PK-5	K-5	PK-2	K-2	3-5	6-8	K-8	6-12	9-12
2013-14	977	922	481	426	496	594	1516	1435	841
2014-15	991	924	490	423	501	571	1495	1391	820
2015-16	964	903	498	437	466	561	1464	1389	828
2016-17	951	901	480	430	471	524	1425	1330	806
2017-18	888	835	448	395	440	522	1357	1330	808
2018-19	846	810	427	391	419	476	1286	1286	810
2019-20	860	820	447	407	413	471	1291	1242	771
2020-21	843	804	451	412	392	436	1240	1212	776
2021-22	869	832	467	430	402	441	1273	1161	720
2022-23	904	865	478	439	426	445	1310	1121	676
2023-24	905	858	459	412	446	435	1293	1118	683

Historical Percentage Changes			
School Year	K-12	Diff.	%
2013-14	2357		
2014-15	2315	-42	-1.8%
2015-16	2292	-23	-1.0%
2016-17	2231	-61	-2.7%
2017-18	2165	-66	-3.0%
2018-19	2096	-69	-3.2%
2019-20	2062	-34	-1.6%
2020-21	2016	-46	-2.2%
2021-22	1993	-23	-1.1%
2022-23	1986	-7	-0.4%
2023-24	1976	-10	-0.5%
Change		-381	-16.2%

## Historical Enrollment

Grades K-12, School Years 2013-14 to 2023-24



# Projected Enrollment

School District: Suffield, CT

11/2/2023

Enrollment Projections By Grade*																				
Birth Year	Births*		School Year	PK	K	1	2	3	4	5	6	7	8	9	10	11	12	UNGR	K-12	PK-12
2018	93		2023-24	47	120	141	151	150	154	142	136	153	146	174	158	155	196	0	1976	2023
2019	103		2024-25	47	143	124	144	153	153	158	147	141	155	160	171	156	151	0	1956	2003
2020	110		2025-26	48	153	147	126	145	156	157	163	152	143	170	157	168	152	0	1989	2037
2021	102	(prov.)	2026-27	48	142	158	150	127	148	160	162	168	154	157	167	155	164	0	2012	2060
2022	119	(prov.)	2027-28	49	165	146	161	152	130	152	165	167	171	169	154	164	151	0	2047	2096
2023	105	(est.)	2028-29	49	147	170	149	163	155	133	157	170	170	187	166	152	160	0	2079	2128
2024	108	(est.)	2029-30	50	150	151	173	150	166	159	138	162	173	186	184	163	148	0	2103	2153
2025	109	(est.)	2030-31	50	151	155	154	175	153	170	164	143	165	190	183	181	159	0	2143	2193
2026	109	(est.)	2031-32	51	151	156	158	156	179	157	176	169	145	181	187	180	177	0	2172	2223
2027	110	(est.)	2032-33	51	153	156	159	160	159	184	162	182	172	159	178	184	176	0	2184	2235
2028	108	(est.)	2033-34	52	150	158	159	161	163	163	190	167	185	188	156	175	180	0	2195	2247

Note: Ungraded students (UNGR) often are high school students whose anticipated years of graduation are unknown, or students with special needs - UNGR not included in Grade Combinations for 7-12, 9-12, etc.

  Based on an estimate of births

  Based on children already born

  Based on students already enrolled

\*Birth data provided by Public Health Vital Records Departments in each state.

\*\* < 10 Not reported, to protect subgroups with fewer than 10 students.

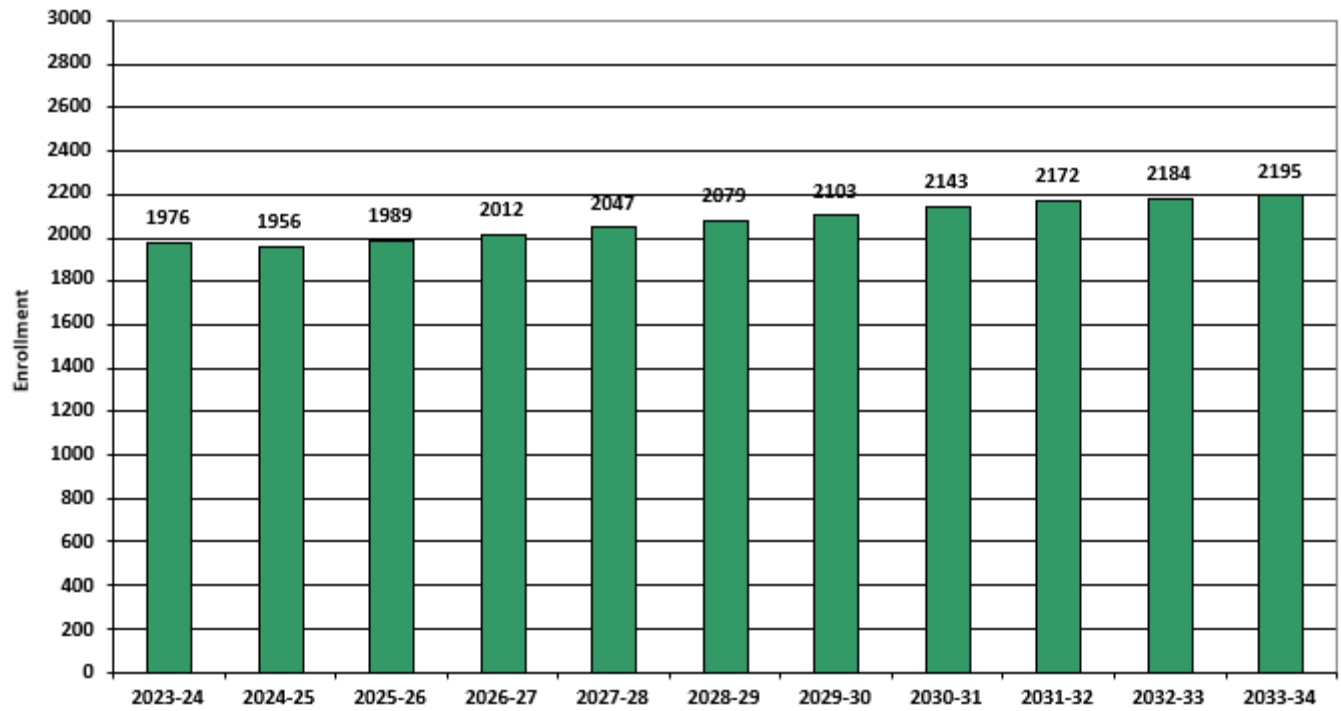
Projected Enrollment in Grade Combinations*									
School Year	PK-5	K-5	PK-2	K-2	3-5	6-8	K-8	6-12	9-12
2023-24	905	858	459	412	446	435	1293	1118	683
2024-25	922	875	458	411	464	443	1318	1081	638
2025-26	932	884	474	426	458	458	1342	1105	647
2026-27	933	885	498	450	435	484	1369	1127	643
2027-28	955	906	521	472	434	503	1409	1141	638
2028-29	966	917	515	466	451	497	1414	1162	665
2029-30	999	949	524	474	475	473	1422	1154	681
2030-31	1008	958	510	460	498	472	1430	1185	713
2031-32	1008	957	516	465	492	490	1447	1215	725
2032-33	1022	971	519	468	503	516	1487	1213	697
2033-34	1006	954	519	467	487	542	1496	1241	699

Projected Percentage Changes			
School Year	K-12	Diff.	%
2023-24	1976	0	0.0%
2024-25	1956	-20	-1.0%
2025-26	1989	33	1.7%
2026-27	2012	23	1.2%
2027-28	2047	35	1.7%
2028-29	2079	32	1.6%
2029-30	2103	24	1.2%
2030-31	2143	40	1.9%
2031-32	2172	29	1.4%
2032-33	2184	12	0.6%
2033-34	2195	11	0.5%
Change	219		11.1%

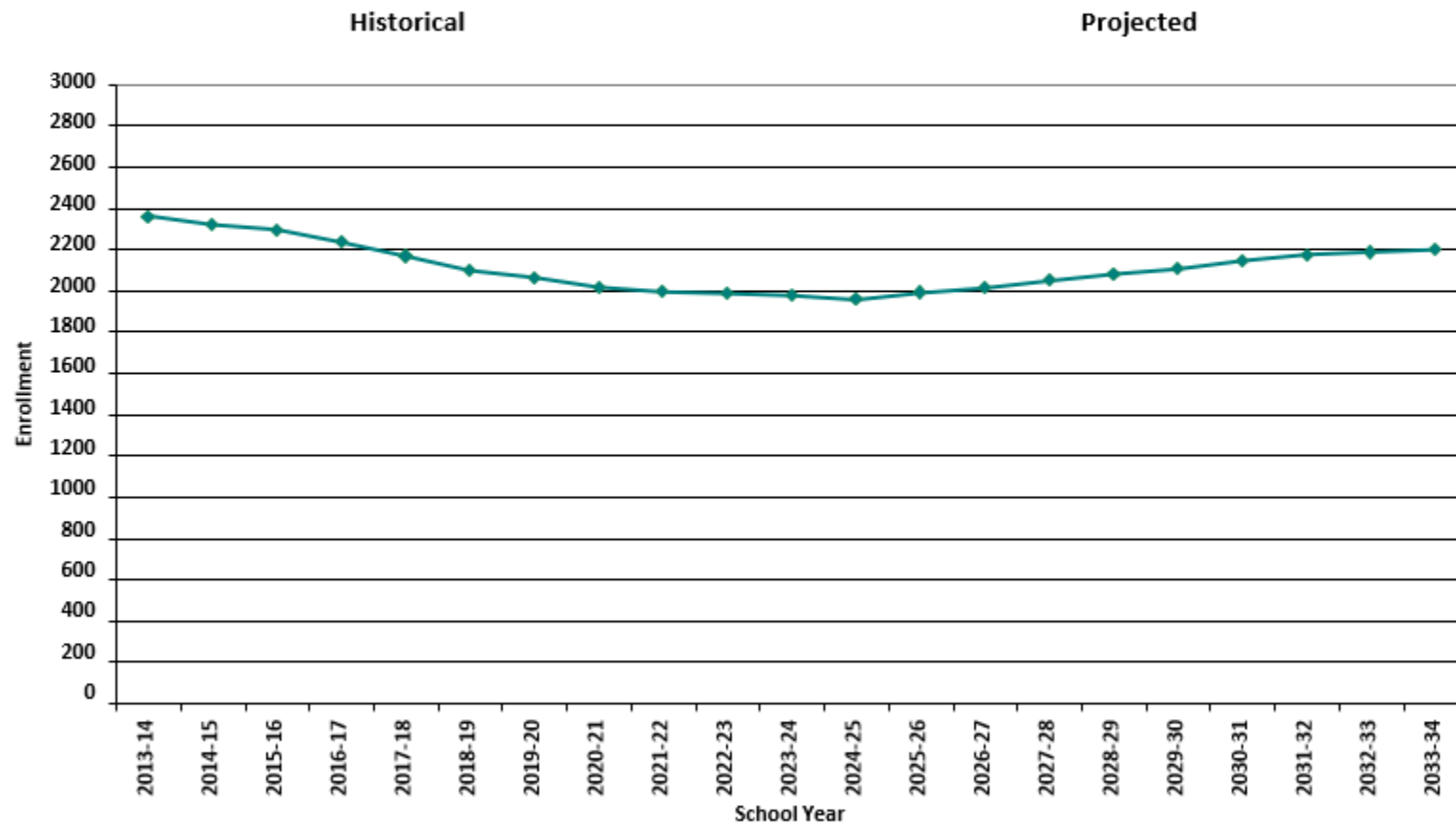
\*Projections should be updated annually to reflect changes in in/out-migration of families, real estate sales, residential construction, births, and similar factors.

# **Projected Enrollment**

**Grades K-12, School Years 2023-24 to 2033-34**



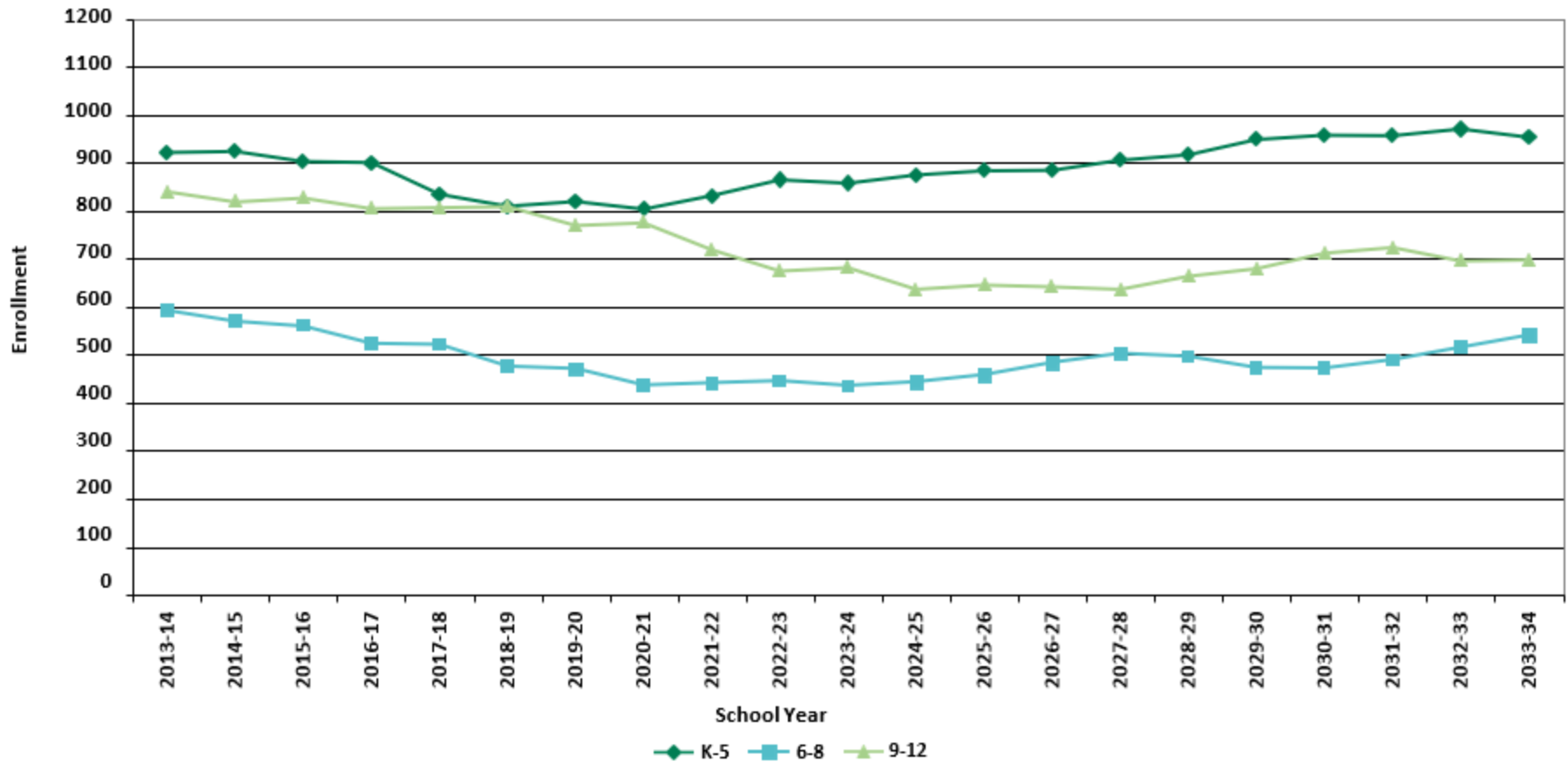
# Historical & Projected Enrollment



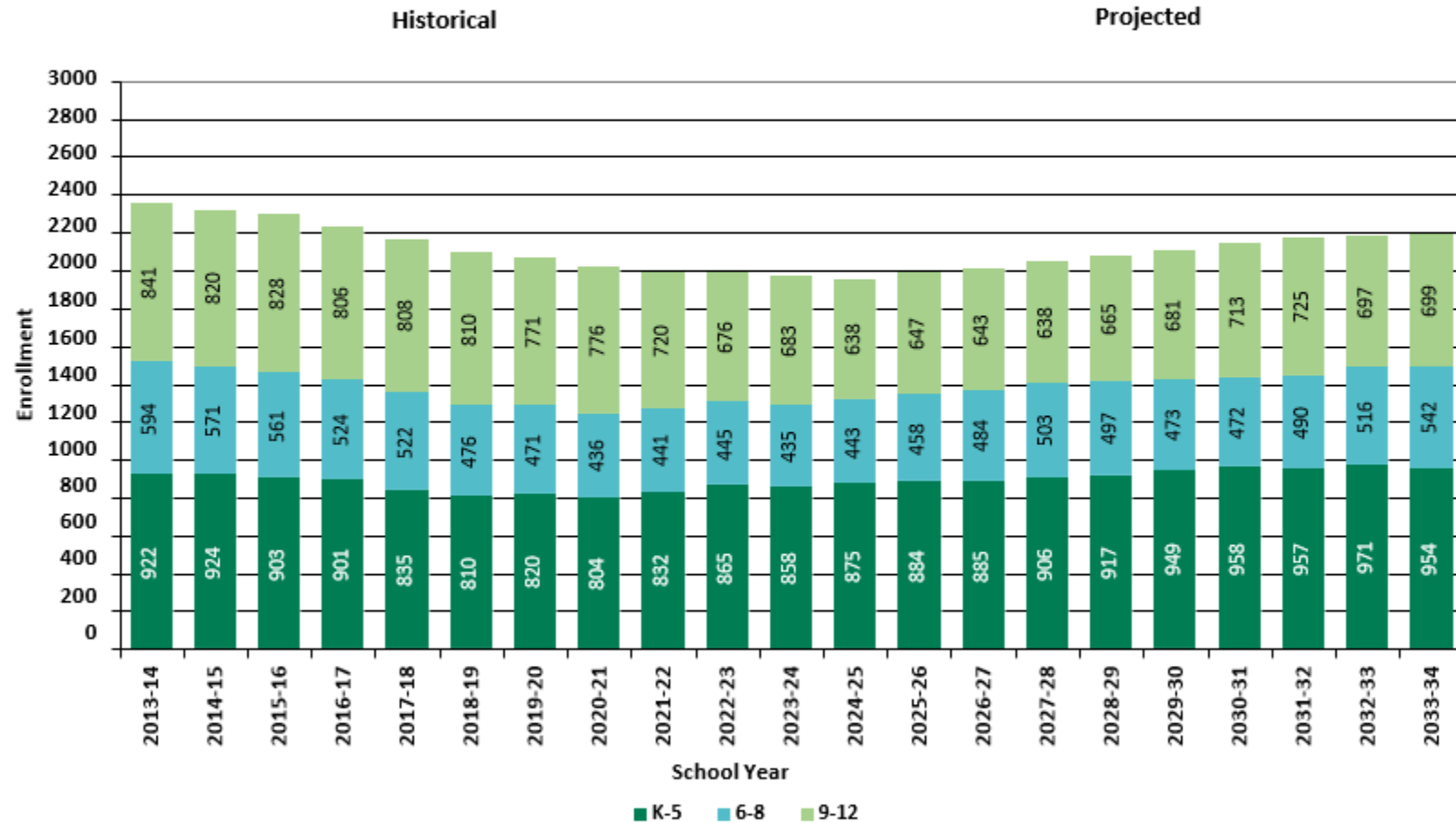
# Historical & Projected Enrollments in Grade Combinations

Historical

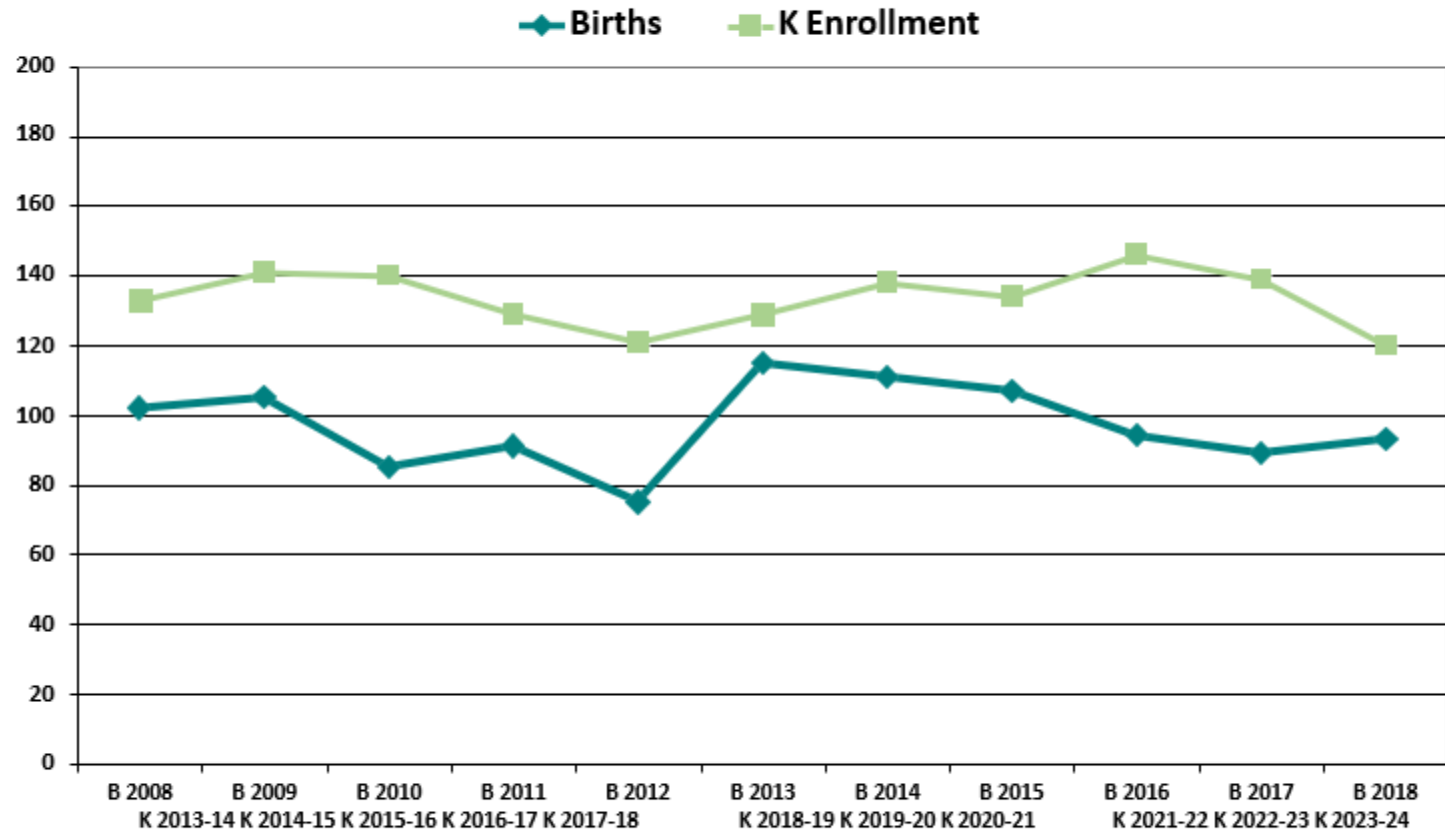
Projected



# Historical & Projected Enrollments in Grade Combinations



## Birth-to-Kindergarten Relationship



## Additional Information

Building Permits Issued (Source: HUD)		
Year	Single-Family	Multi-Units
2019	30	0
2020	33	0
2021	47	0
2022	29	0
2023	20 to date	0 to date

School Year	9 - 12 CTE	K - 12 Non-Public	K - 12 Choice-In	K - 12 Choice-Out	K - 12 Out-of-District SPED	K - 12 Homeschool
2019-20	< 10 **	n/a	168	48	23	14
2020-21	< 10 **	46	166	44	20	48
2021-22	< 10 **	n/a	119	47	22	41
2022-23	163	n/a	126	33	20	41
2023-24	0	n/a	128	29	22	49

\*The above data was provided by the District, with the exception of building permit data (provided by HUD).

"n/a" signifies that information was not provided by District.

\*\* < 10 Not reported, to protect subgroups with fewer than 10 students.

## New England's PK-12 Enrollments Trends

From 2021 to 2030, the US Department of Education anticipates changes in PK-12 enrollment of -3.2% in the South, -6.0% in the West, -3.9% in the Midwest, -6.0% in the Northeast, and a total of -4.4% nationwide.

State	Fall 2021 PK - 12	Fall 2030 Projected	PK-12 Decline	% Change 2021-2030
USA	49,452,864	47,252,500	-2,200,364	-4.4%
CT	508,686	475,600	-33,086	-6.5%
ME	173,215	161,800	-11,415	-6.6%
MA	921,180	879,900	-41,280	-4.5%
NH	170,005	144,600	-25,405	-14.9%
RI	138,566	130,200	-8,366	-6.0%
VT	83,975	74,600	-9,375	-11.2%

**Source:** U.S. Department of Education, National Center for Education Statistics, Enrollment in public elementary and secondary schools, by region, state, and jurisdiction: Selected years, fall 1990 through fall 2030, Table 203.20, March 2023.

Although most New England Districts are seeing a decline in the number of births, NESDEC's experience indicates that the impact on enrollment varies from District to District. Almost half of New England Districts have been growing in PK-12 enrollment, and a similar number are declining (often in rural areas), with the other Districts remaining stable.

# Methodology, Reliability and Use of this Document

## PROJECTION METHODOLOGY

Cohort component (survival) technique is a frequently used method of preparing enrollment forecasts. NESDEC uses this method, but modifies it in order to move away from forecasts that are wholly computer- or formula-driven. Such modification permits the incorporation of important, current district-specific demographic information into the generation of enrollment forecasts (such as in/out-migration of students, resident births, HUD-reported building permits, etc.). Percentages are calculated from the historical enrollment data to determine a reliable percentage of increase or decrease in enrollment between any two grades. For example, if 100 students enrolled in Grade 1 in 2022-23 increased to 104 students in Grade 2 in 2023-24, the percentage of survival would be 104%, or a ratio of 1.04. Ratios are calculated between each pair of grades or years in school over several recent years.

After study and analysis of the historical ratios, and based upon a reasonable set of assumptions regarding births, migration rates, retention rates, etc., ratios most indicative of future growth patterns are determined for each pair of grades. The ratios thus selected are applied to the present enrollment statistics to project into future years. The ratios are the key factors in the reliability of the projections, assuming validity of the data at the starting point.

## RELIABILITY OF ENROLLMENT PROJECTIONS

Projections can serve as useful guides to school administrators for educational planning. Enrollment projections are more reliable in Years #1-4 in the future and less reliable in the "out-years." Projections six to ten years out may serve as a guide to future enrollments and are useful for planning purposes, but they should be viewed as subject to change given the likelihood of potential shifts in underlying assumptions/trends, such as student migration, births as they relate to Kindergarten enrollment, and other factors.

Projections that are based upon **the children who already are in the district** (the current K-12 population only) will be the most reliable. The second level of reliability will be for those children already **born into the community but not yet old enough to be in school**. The least reliable category is the group for which an estimate must be made **to predict the number of births**, thereby adding additional uncertainty. See these three multi-colored groupings on the "Projected Enrollment" tab.

Annual updates allow for early identification of recent changes in historical trends. When the actual enrollment in a grade is significantly different (higher or lower) from the projected number, it is important (yet difficult) to determine whether this is a one-year aberration or whether a new trend may have begun. **In light of this possibility, NESDEC urges all school districts to have updated enrollment forecasts developed by NESDEC each October.** This service is available at no cost to affiliated school districts.

## USING THIS INFORMATION ELECTRONICALLY

If you would like to extract the information contained in this report for your own documents or presentations, you can use screenshots, which can be inserted into PowerPoint slides, Word documents, etc. Because screenshots create graphics, the image is not editable. Please feel free to contact us if you need assistance in this matter, by phone (508-481-9444) or by email ([ep@nesdec.org](mailto:ep@nesdec.org)).