



CAREER PATHWAYS

Launch Your Future Today

PAST | PRESENT | FUTURE

What is LYFT Career Pathways?

Launch Your Future Today (LYFT) is a rural career and technical education (CTE) pathway initiative with the purpose of rebuilding Career and Technical Education (CTE) in southwest and west central Minnesota.





We define CTE as...

- ACCESSIBLE, EQUITABLE, AND INCLUSIVE
- ALIGNED AND INTEGRATED
- INNOVATIVE AND CAREER CONNECTED
- ENGAGING AND RELEVANT
- SUSTAINABLE AND NEED-BASED



The Goal of LYFT Career Pathways

For every student in grades 7-12 across the region to gain marketable skills through meaningful CTE courses and opportunities, that lead to further education and careers that match our region's labor market needs.



Changing the Narrative

Typically



1. College



2. Major



3. Career Pathway

Should Be



1. Career Pathway



2. Major – Credential



3. Future Training



LYFT

CAREER PATHWAYS

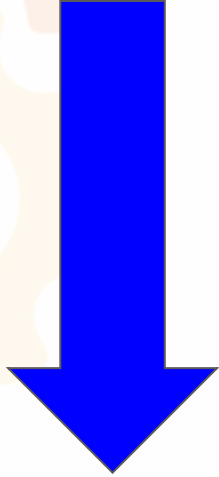
Launch Your Future Today

PAST

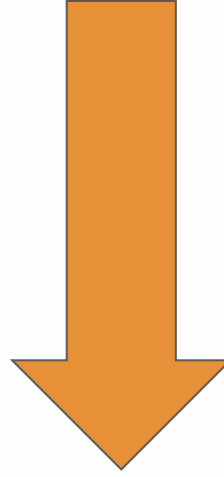
The NEED for LYFT Career Pathways



of CTE
Classes



of CTE
Students



of CTE
Teachers



Funding
for CTE



Business
Demand
for Skilled
Employees

LYFT Career Pathways Funding

LYFT was originally funded through a \$3 million Rural Career and Technical Education Consortium Grant, which was passed by the Minnesota Legislature in 2017 and supported just the southwest west central region of Minnesota.





CAREER PATHWAYS

Launch Your Future Today

ADVISORY COMMITTEE MEMBERS



REDWOOD AREA SCHOOLS
District #2897



Mid-Minnesota
Development Commission
Serving citizens of
Kandiyohi, McLeod,
Meeker, & Renville Counties



Upper Minnesota Valley
**REGIONAL
DEVELOPMENT
COMMISSION**

Helping Communities Prosper

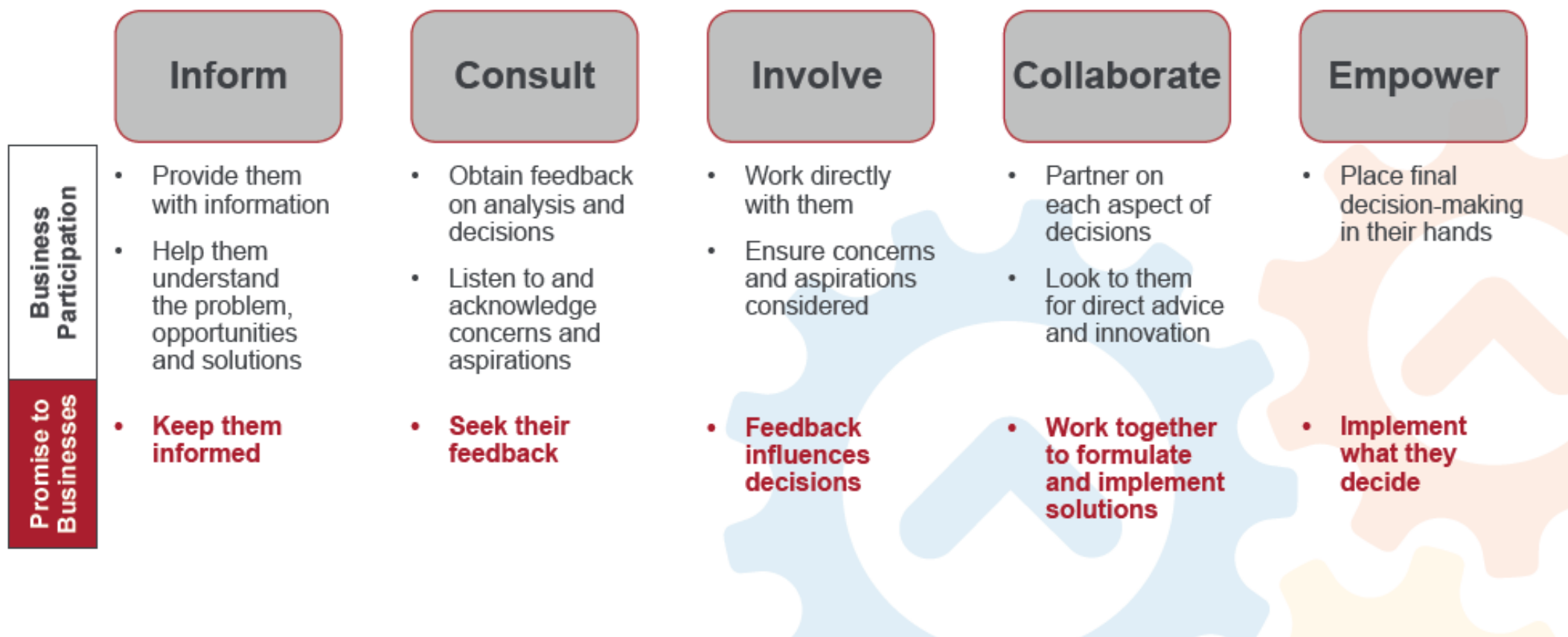


Jackson County Central Schools
Inspiring Excellence



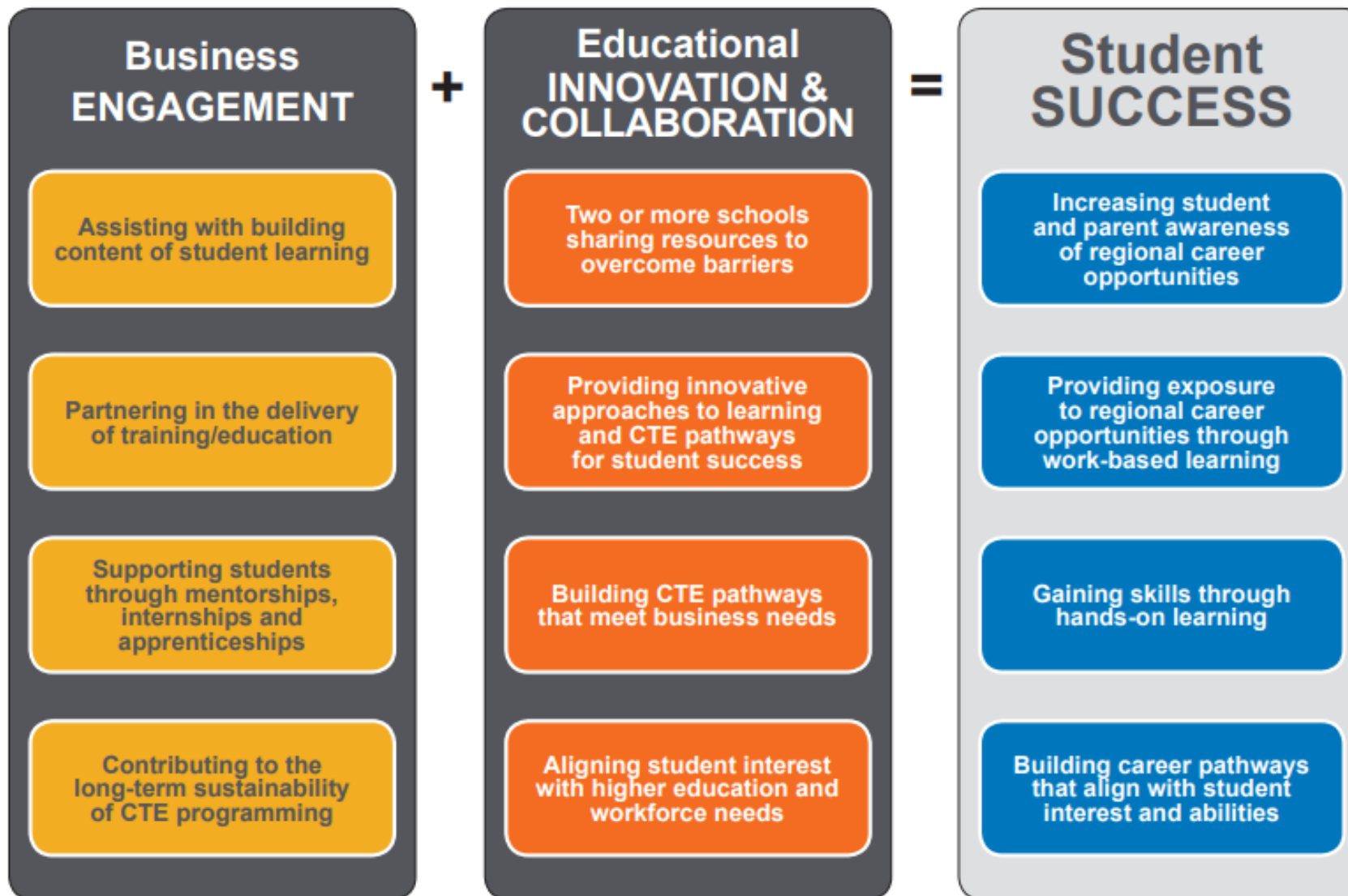
Business Engagement Spectrum for Career and Technical Education Courses

This tool shows different levels of engagement on a spectrum from “inform” to “empower,” with businesses having higher degrees of influence over decisions made as the engagement levels move toward empower. There are many factors and situations that determine the degree of engagement, so there is no right or wrong placement on the spectrum.





Launching Futures: Formula for SUCCESS

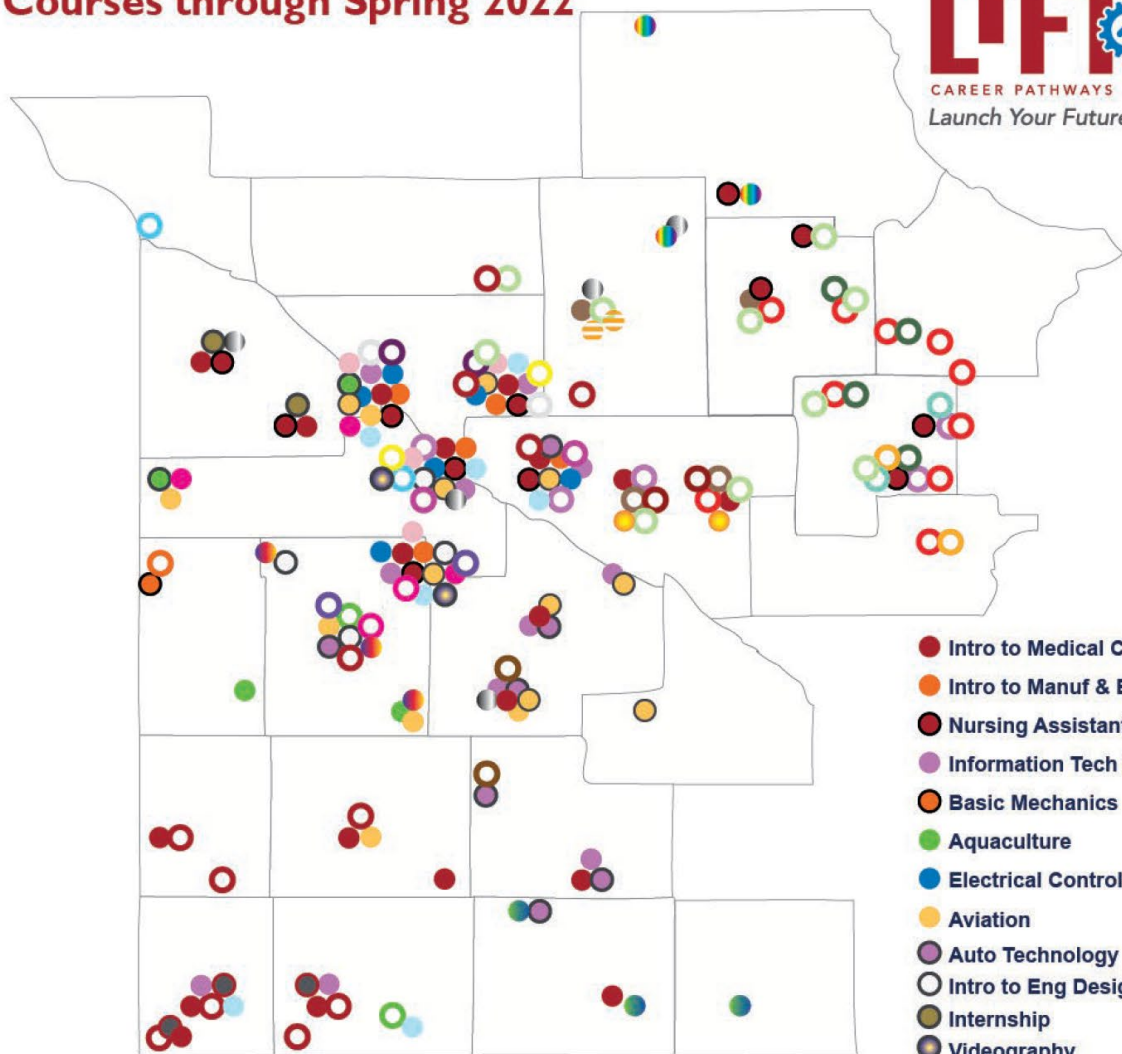


Innovation Grants





2021-22 School Year Courses through Spring 2022



- CMJTS Work Based Learning
- Small Business Basics
- Food Truck
- CS Discoveries
- Community Health Worker
- Networking Basics
- CPR, First Aid & AED
- Electrical, Plumbing and HVAC
- CADD PLTW
- Tiny House
- Medical Terminology
- IGNITE Your Future
- Child Development
- Architecture PLTW
- Yellowstone Productions
- ProStart
- CEO
- Manufacturing
- Welding Principles
- CDL Training Program
- Intro to Education
- Pharmacy Tech
- AgDrone Technology
- Medical Careers Internship
- Industrial Const Methods
- PIC Work Based Learning
- Documentary Film Making
- CROW CAPS MAPS
- Work and Learn
- Pathways Technology
- YES! ECO Careers
- BEN CEO in the Classroom

- Intro to Medical Careers
- Intro to Manuf & Engin
- Nursing Assistant
- Information Tech Concepts
- Basic Mechanics
- Aquaculture
- Electrical Controls
- Aviation
- Auto Technology
- Intro to Eng Design
- Internship
- Videography



CTE #1 Workforce Strategy

Minnesota Employment and Economic Development, *High School Career and Technical Education as a Workforce Development and Retention Strategy* by Alessia Leibert

June 2022

- Students who participate in CTE become employed **locally** *at higher rates* than other students;
- CTE programming can contribute to workforce retention by connecting students to local postsecondary institutions and local employers. This study finds that offering CTE courses with a work-based learning component (on-the-job training, internships, apprenticeships) is part of the reason why CTE participants, and concentrators in particular, are retained at higher rates than other students;
- The dual goal of connecting students to local postsecondary institutions and local employers is best achieved when CTE programs attract students to fields that support jobs in local industries.





LYFT

CAREER PATHWAYS

Launch Your Future Today

PRESENT

LYFT Career Pathways Funding

In 2022, The Rural Career and Technical Education Consortium Grant funded CTE efforts of 8 greater Minnesota Service Cooperatives (MSCs) through a legislative appropriation of \$6 million shared by the MSCs.



LYFT Career Pathway Priorities 2023

- ☐ ***Teacher Preparation and Support***
- ☐ ***Advancing Career Connected Learning***
- ☐ ***Expanding Regional Awareness and Collaboration***
- ☐ ***Ensuring Equitable Access to Advanced CTE***



SCHOOL DISTRICTS,
HIGHER EDUCATION,
WORKFORCE AGENCIES
AND BUSINESS WORK
TOGETHER TO ENSURE
STUDENT SUCCESS

Collaborative
and
Innovative

Business
Driven and
Supported

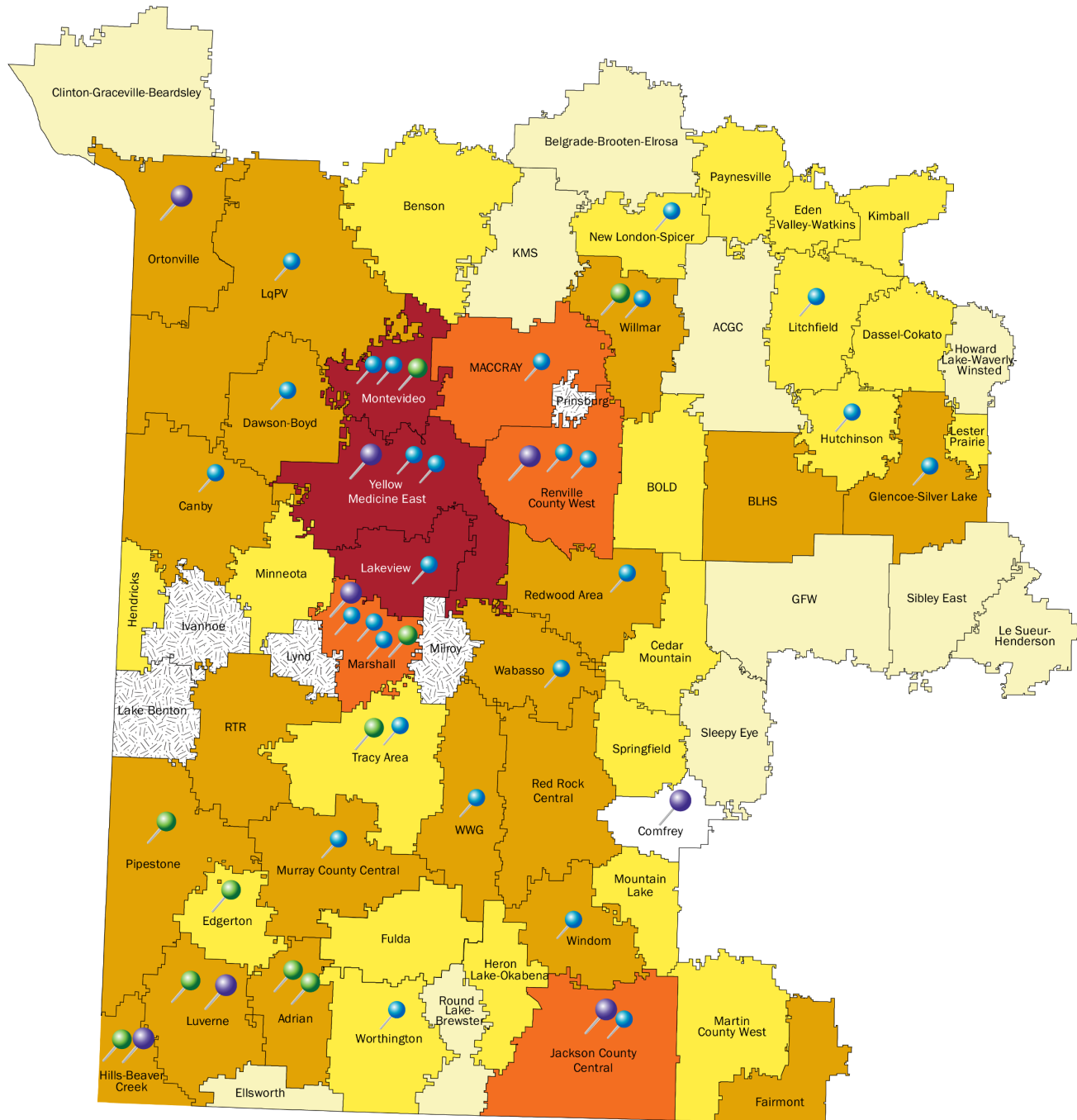
CTE

Student-
Centered

THRIVING COMMUNITIES

BUSINESS DRIVES CTE
PROGRAM CONTENT
AND SUPPORTS CAREER
AWARENESS AND SKILL
DEVELOPMENT

ALL STUDENTS ARE
AWARE OF LOCAL/REGIONAL
CAREER OPPORTUNITIES,
UNDERSTAND THEIR
INTERESTS & ABILITIES, AND
ARE EQUIPPED TO PURSUE A
CTE PATHWAY THAT BEST
FITS THEM



LYFT 1.0 Projects (January 2017 - June 2022)

- 1-2 Projects**
Also includes ECHO Charter, Grand Meadow Home School, Lower Sioux, New Century Academy, Prairie Lakes, Project SEARCH, Winsted Holy Trinity, Willmar Community Christian
- 3-5 Projects**
Also includes Dream Academy, Southwest Christian, Central Minnesota Christian School
- 6-10 Projects**
Also includes Minnesota River Valley ALC
- 11-20 Projects**
- 21-30 Projects**

LYFT 2.0 Projects (2022-23)

- Also includes New Century Academy

LYFT 2.2 Projects (2023-24)

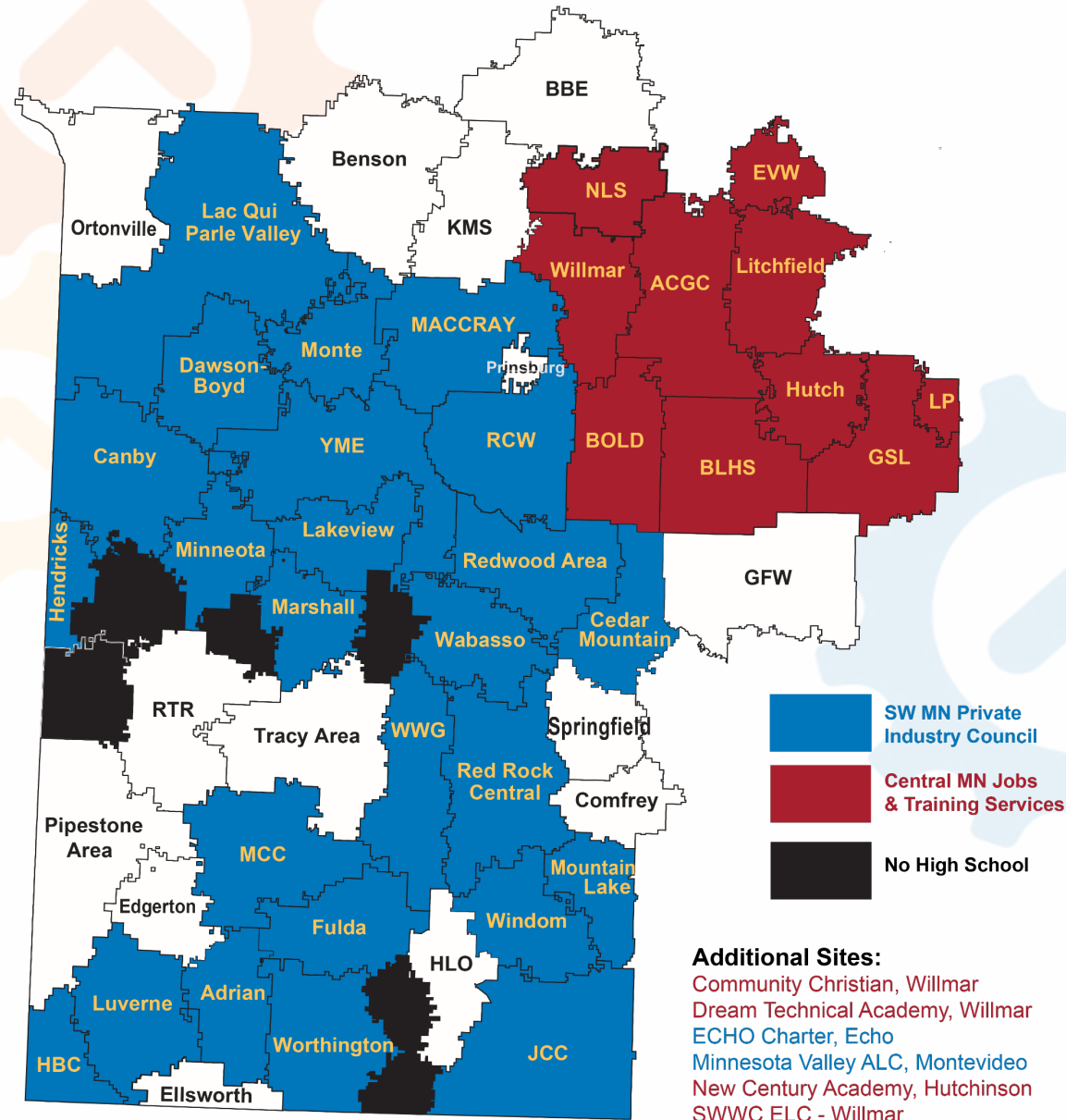


LYFT 2.3 Projects (2023-24)



- No high school students

Career Connected Learning



EXPLORATION

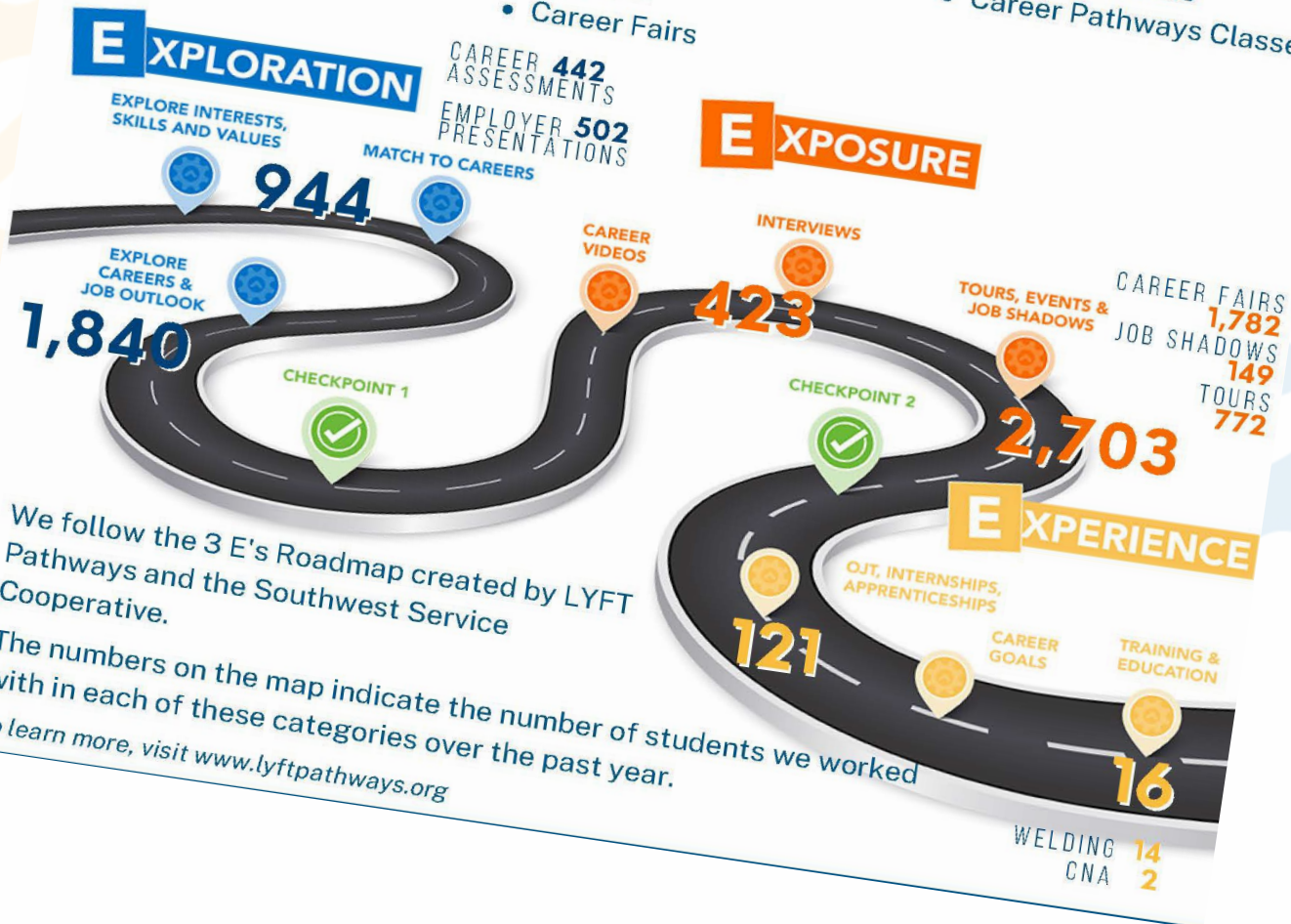
- Skills/Interest Assessments
- Employability Skills Class
- Interpersonal Skills Presentations
- Life Skills Event
- Summer Transitions Program

EXPOSURE

- Tour of Manufacturing
- Senior Day
- Business Tour Day
- Job Shadows
- Breaking Traditions
- Job Shadow Day
- Middle School Mid-Mesters
- Career Fairs

EXPERIENCE

- Summer Internship Program
- WBL Classes
- Apprenticeship
- Teacher Tour Day
- Internship Class
- Career Pathways Classes



We follow the 3 E's Roadmap created by LYFT Cooperative.

The numbers on the map indicate the number of students we worked with in each of these categories over the past year.

to learn more, visit www.lyftpathways.org



Resources for Students/Educators

- ***What's Next After High School* Video:** Focus on alternative options/decisions
- **3E's Roadmap:** Exploration, Exposure, Experience
- **Resources/Worksheet:** A portfolio of sorts. Coming soon, intuitive, online platform.

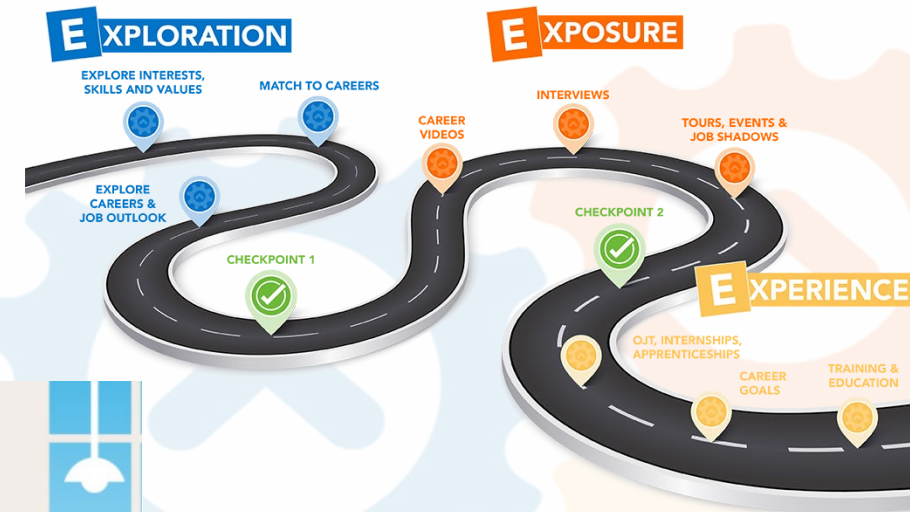
What happens next after high school?

Watch [this video](#) to get started on your journey.

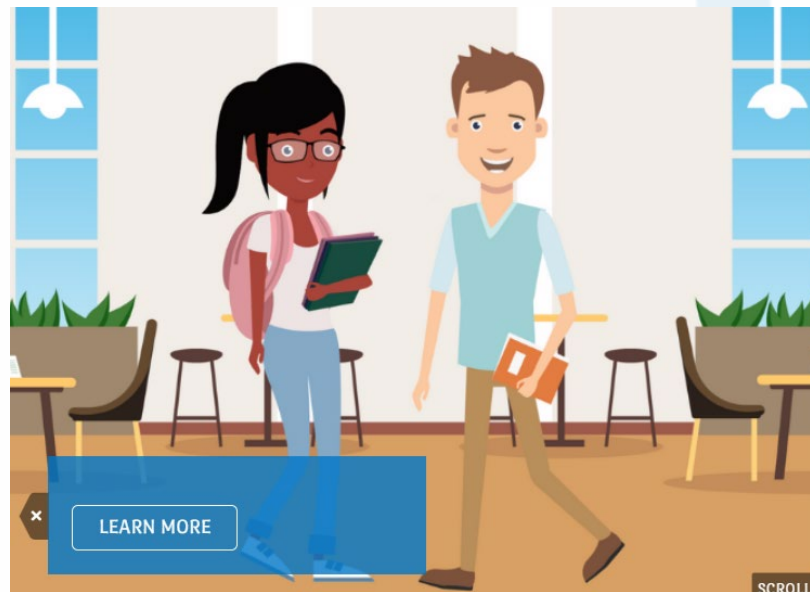
The 3 Es Roadmap

EXPLORATION | **EXPOSURE** | **EXPERIENCE**

Download this [FREE WORKSHEET](#) to help you track what you learn along your journey.



What's next after high school?





LYFT

CAREER PATHWAYS

Launch Your Future Today

FUTURE

LYFT Career Pathways Funding

During this past legislative session, the Rural CTE Consortium appropriation was passed. The funding level increased from \$6 million to \$10 million. A 9th educational service cooperative from the Metro was added.



The Journey to Meaningful Workforce Participation...

The data shows that the choices students make in high school can predictably guide them to specific states of meaningful workforce participation later on.

November 2023

Kelly Asche, Senior Researcher



“A new narrative is being developed that better links the educational plans and paths to local workforce demand.

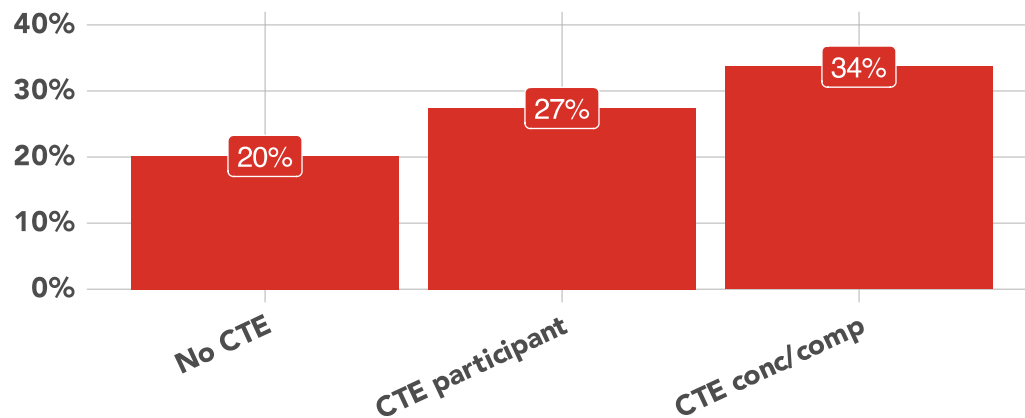
CTE programming indicates that having local ties to the labor force and increasing awareness among our youth of the local opportunities available is a key part of the path and plans that keep them in Southwest.”



We are making a difference...

Proportion of CTE Achievement that have meaningful workforce participation in Southwest 5 years after high school

Higher CTE achievement is associated with higher levels of meaningful workforce participation in SW

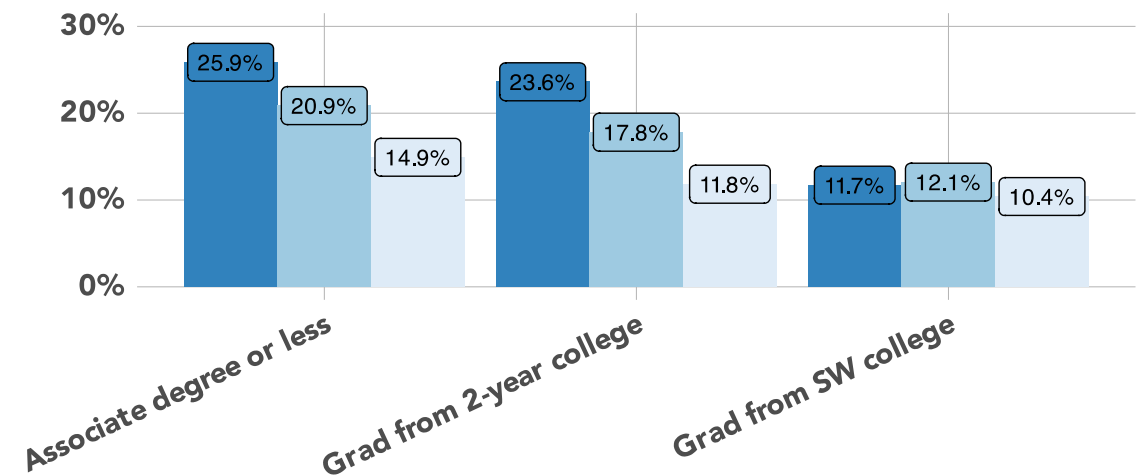


Above: Significantly higher percentages of individuals that either are CTE concentrators/completers or take at least one CTE course have meaningful workforce participation in Southwest MN one, five, and ten years after graduating high school, compared to the group that has no CTE experience. Data: MN OHE | MN DEED

“Coursework taken during high school, specifically career and technical education courses (CTE), appeared to be a definite factor in whether a student had meaningful workforce participation in the Southwest region after high school.”

Proportion of CTE achievement and post-high school path 5 years after graduating

CTE engagement increases the proportion of individuals following post-high school paths that tend to benefit the region's laborforce



2023 SW MN Priorities

☐ Teacher Preparation and Support

- Externships
- CTE/Work-based Learning Licensure
- Program Approval

☐ Advancing Career Connected Learning

- Career Connector/Navigator Resources
 - Career Exploration
 - Career Exposure
 - Career Experience
 - The 3Es Roadmap & Resources
- Innovation Grants
- Work-Based Learning (Credit/Work Experience)
- **Hosting Events for Students**
 - Career Expos/Institutes
 - First-Tech Challenge
- ***Career Consultant Program- coming soon!***
- 5th-8th Grade Career Exploration & Development
 - Project Discovery- New
 - Metier
 - TTOP Career Institute

☐ Student Entrepreneurship- Creating Entrepreneurial Opportunities (CEO)

- Southwest
- West Central
- Murray/Lyon
- Cottonwood/Jackson
- Coming soon! MN River Valley
- Coming soon! Hwy 59 Corridor

☐ Development of New Student Organizations

☐ Expanding Awareness and Collaboration (Regional/Statewide)

- Business Engagement
- Summits, Workshops, etc.
- Southwest Minnesota Private Industry Council
- Minnesota Department of Employment and Economic Development
- Office of Higher Education
- **Carl Perkins**
- Minnesota Service Cooperative CTE Consortium

☐ Ensuring Equitable Access to Advanced CTE

- English Language Learners/Special Education/Non-traditional Careers
- Project Discovery- New

THANK YOU!

LEARN MORE about LYFT Career Pathways or CONTACT US:



www.lyftpathways.org



@LYFTPathways



@LYFTPathways

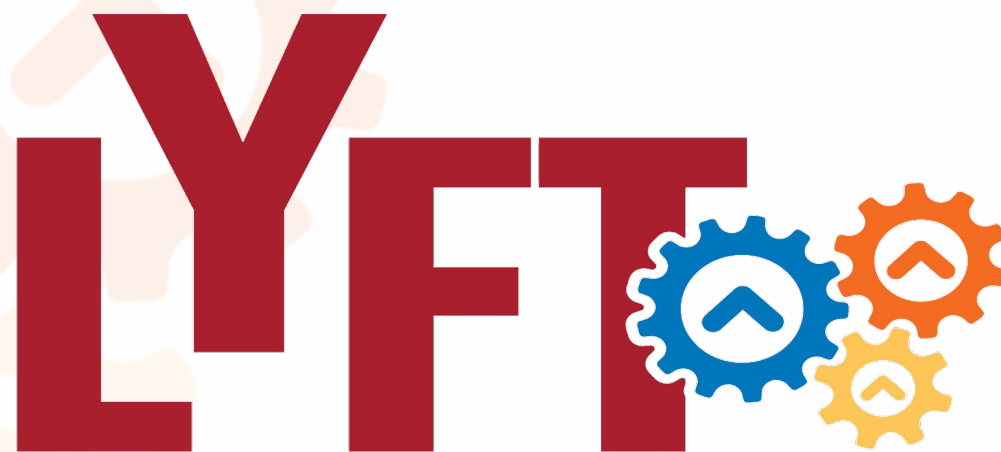


(507) 537-2271



lyft@swwc.org





CAREER PATHWAYS

Launch Your Future Today

Strategic Priorities

2024-2025

MN CTE Funding: PAST – CURRENT - FUTURE

PAST

- 2017 – 2022 SWWC - \$3,000,000 – LYFT Career Pathways
- 2021 - 2022 SCSC and SSC - \$3,000,000 - Future Ready CTE/FutureForward™
- 2021 – 2022 Northeast/Northwest - \$1,500,000 – Century Program

PRESENT (Through June 2024)

- 2022 – 2024 Rural MSC's (8 - Metro Not Included) - \$6,000,000

FUTURE

- 2024 – 2025 \$5,000,000 to support MSC CTE Goals/Objectives
- 2025 – 2026 \$5,000,000 to support MSC CTE Goals/Objectives

MSC CTE Consortium: Mission – Vision - Priorities

Mission: Leveraging statewide and regional approaches to ensure robust CTE experiences for students with an eye on future success.

Vision: All students have access to innovative, career-connected learning through a vibrant CTE education network with strong industry connections, providing students with the skills they need for their future.

Equipping Students for
Our Future Workforce
Through Career-
Connected Learning

Advancing Collaborative
Partnership that
Accelerate Quality
Learning

Strategic
Priorities

Strengthening CTE
Through School District
and Educator Supports

Advancing Statewide
Awareness and
Collaboration

MSC CTE – Statewide Priorities: 2024-25

Advancing Career Connected Exploration & Learning

- Innovation funding for new CTE programs and student experiences
- Career/WBL Coordination and Support
- Grades 5-8 Exposure/Exploration Programs
- Business and Community Engagement Models/Structures
- Intentional Supports for Opportunity Youth

Strengthening CTE Through School/Educator Supports

- CTE Alternative Licensure Program
- Development of Career Pathways/Academies
- CTE Teacher Induction Program
- Teacher Externships
- Funding to provide updated equipment/technology for schools (industry-aligned)

Advancing Statewide Collaborative Partnerships

- CTE Collaboration: Sharing/Learning/Evaluation
- Outreach/Relationship Building to Advance Collaboration
(Business, Industry, Labor, Workforce, Higher Ed)
- CTE Marketing and Communications

2024-2025 Legislative MSC Funding

- HF 2497/SF 2684
- Education Finance Committee
- Career and Technical Education Consortium Grants
- Collaboration of the MN Service Cooperatives and other regional public/private partners
- \$5 Million/Year

Funding Use:

- Develop career pathways
- Develop new CTE programs tied to regional industries/economy
- Equip students with technical/workplace skills
- Improve access to CTE programs by developing public/private partnerships and increasing postsecondary options
- Increase family/student awareness of CTE
- Provide industry-level equipment/technology
- Address teacher shortage in CTE
- Provide Prof Dev for teachers
- Provide transportation reimbursement for CTE student participation

Potential LYFT Priorities 2024-25

Work-based Learning	State-approved; credit for learning
Teacher Professional Dev/Support	Externships, CTE/WBL Licensure, Program Approval
Equipment/Technology Upgrades w/ Training	Funding and training to provide student access to industry-aligned equipment/technology
Career-Connected Learning	Career Consultants/Navigators to bridge relationships between education and industry in providing immersive experiences for students
Innovation Grants	Grants to school districts in alignment with legislative funding requirements (local/regional career exposure, hands-on learning, community collaboration)

Potential LYFT Priorities 2024-25 (Continued)

Hosting Events for Students	Career Expos/Fairs; Major Madness (post high school opportunities for EL, BIPOC, 1 st gen); Career Institute (summer career exploration for 7-9 th graders); Business tours; Events via SWWC/Perkins such as Sci/Nature Conference, Young Writers, Young Artists, Project Discovery, etc.)
5th-8th Grade Exploration	Programs/Experiences to help younger students explore career opportunities (Metier – Middle school programs); Career Institute; Project Discovery; Business Tours, etc.)
Student Entrepreneurship	Support to advance Creating Entrepreneurial Opportunities (CEO) program in high schools. Students visit over 30 area businesses, develop business skills via student business and mentors.
New Student Orgs	Supporting new student organizations in high schools without access; orgs develop student leadership opportunities. Such as BPA, FFA, FCCLA, HOSA, SkillsUSA, First Tech Challenge, etc

LYFT 2024-2025 Priorities

- Work-based Learning
 - Teacher Prep/Support
 - Equipment/Technology Upgrades w/ Training
 - Career-Connected Learning
 - Innovation Grants
 - Hosting Events for Students
 - 5th-8th Grade Exploration
 - Student Entrepreneurship
 - New Student Orgs
- *How would you rank these priorities?*
 - *What opportunities/challenges are you seeing?*
 - *How can we best align this work with other regional/state efforts?*

THANK YOU!

LEARN MORE about LYFT Career Pathways or CONTACT US:



www.lyftpathways.org



@LYFTPathways



@LYFTPathways



(507) 537-2271



lyft@swwc.org

