



State of the District 2024



60:00

Endless Possibilities

February 2, 2024

Dorchester School District 2

WELCOME



Ashley Ridge High School

Air Force JROTC



Endless Possibilities

Ms. Schoneke Summerhill

Beech Hill Elementary School
DD2 2023 Teacher of the Year



Endless Possibilities



Mr. Brian Bohannon

Public Information



Welcome



Endless Possibilities



Student Performance

Rollings Middle School of the Arts



Endless Possibilities



Dr. Ashley Wimberly

Chair, Board of School Trustees



Endless Possibilities

Student Performance

The Sand Hill Singers



Endless Possibilities



Ms. Rita Berry

**Greater Summerville Chamber of
Commerce**



Endless Possibilities





Schoneke Summerhill
DD2 Teacher of the Year
Endless Possibilities





Endless Possibilities



Dr. Shane Robbins, ATC

Superintendent of Schools



"If you could get all the people in the organization rowing in the same direction, you could dominate any industry, in any market, against any competition, at any time"

-Patrick Lencioni



Endless Possibilities





Endless Possibilities



OUR LEARNERS



26,748 Total Students

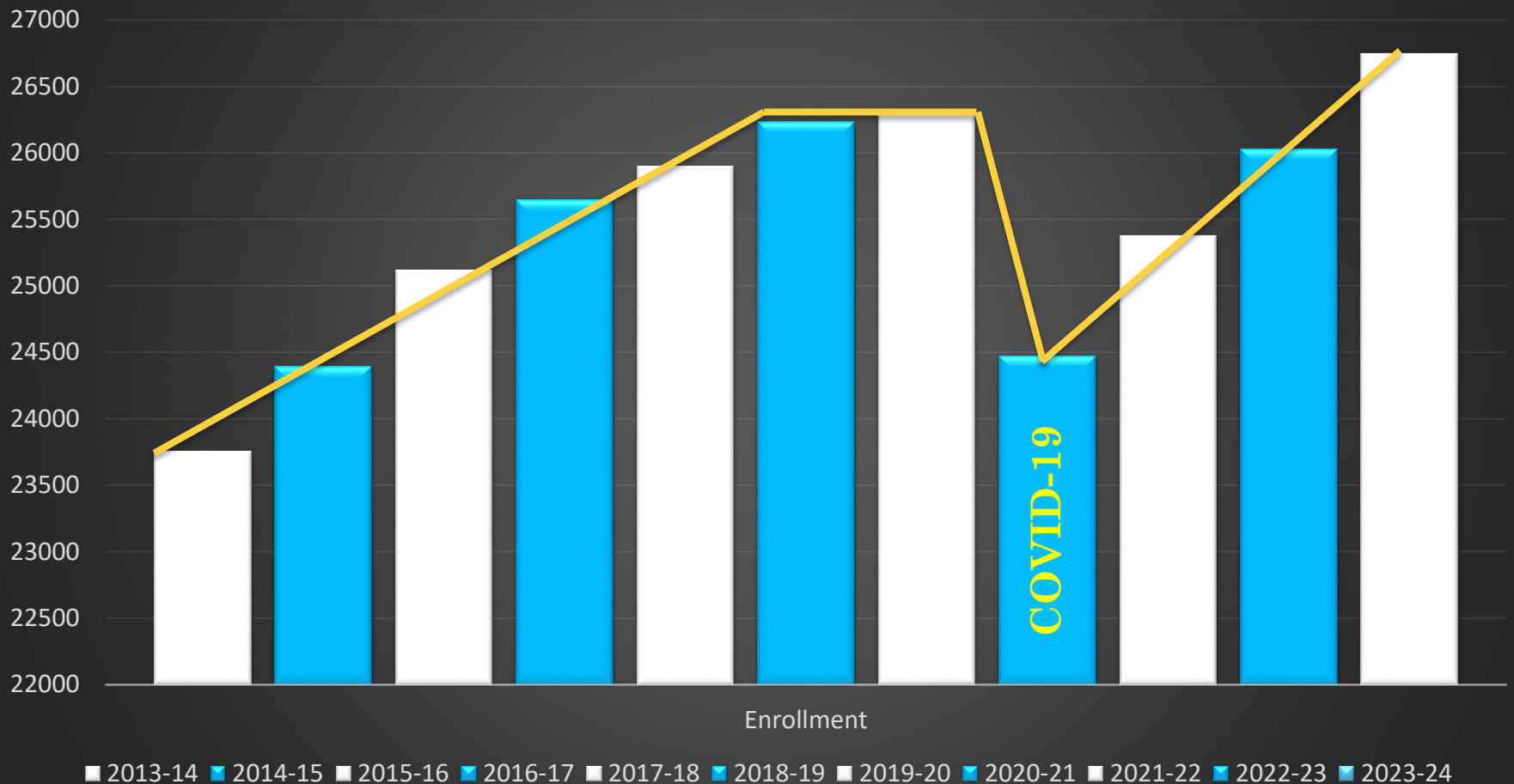
51%	White
29%	Black or African American
11%	Hispanic
2%	Asian
0.63%	American Indian/Alaska Native
0.33%	Hawaiian/Pacific Islander
6.4%	2 or More Races
53%	Pupils in Poverty
3250	Learners with Disabilities
3310	Multilingual Learners
4567	Academically Gifted Learners



Endless Possibilities



20 Year Historical Enrollment





Our Team

Classified Staff

1986 classified employees

- ✓ Transportation
- ✓ Food Services
- ✓ Nursing
- ✓ Security
- ✓ Maintenance
- ✓ Custodial
- ✓ Technology
- ✓ Secretary
- ✓ Paraprofessionals



Our Team

Certified Staff



- 1874 Certified employees**
- ✓ **\$53,208 average salary**
- ✓ **24.5% inexperienced teachers**
- ✓ **53.6% have advanced degrees**



Endless Possibilities



Carolyn “Taddy” Thomas, Director

- **Current enrollment- 1806 students**
 - 345 student increase from 2022-23
 - 533 students (DD2 faculty/staff)
 - 1273 students
 - 303 students ABC Scholarships
- **2024 Summer Camp 5 sites- NES, ENES, FDES, ABES, SHES?**
- **Fun Facts**
 - Spanish “class” at SHES
 - Weekly STEM challenges at SES

Endless Possibilities

1st SEMESTER

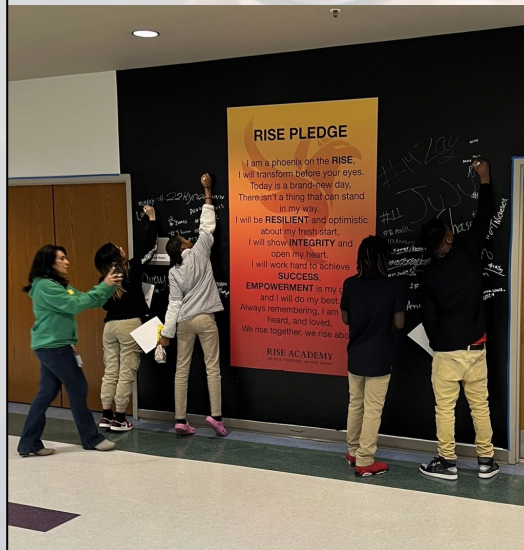
- ✓ **3725 students** with one industry certification
- ✓ **856 student completers**- Completed all required courses in a pathway
- ✓ **145 students**- Involved in apprenticeships, internships, and work-based learning.
- ✓ **654 student concentrators**- Completed 2 required courses in a pathway. (Need 1 or 2 to become a completer depending on pathway.)



Endless Possibilities

The RISE Academy is our redeveloped program for alternative education.

- Designed to promote the academic and social development of students in grades 6-12, who have been assigned to the alternative school program in lieu of expulsion.
- Students are provided the opportunity to succeed in a supportive, non-traditional educational delivery system.
- The curriculum is designed to enhance the students' abilities to function successfully outside of the school, such as community service, career exploration, interpersonal skill development, and individual and family counseling.



OUR GRADUATES



- ✓ **1,777 Graduates in 2023**
- ✓ **32 Associate Degrees earned**
- ✓ **\$51.5 million scholarships awarded**
- ✓ **92.4% 4-Year Graduation rate**
- ✓ **78.2% College and Career Readiness rate**



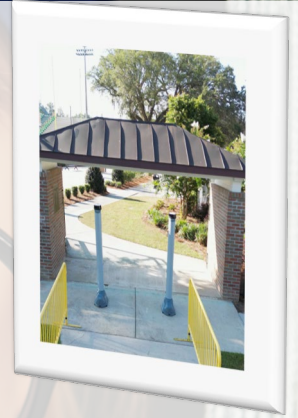
Endless Possibilities



Endless Possibilities

SAFETY

- **1 District Director of Safety**
- **1 Asst. Director of Safety**
- **SRO'S in every school**
- **Additional plain clothes safety personnel in each high school**
- **Stop it- anonymous reporting**
- **I Love You Guys Standard Response Protocol**
- **Metal Detectors at all 3 high schools**
- **Certified K-9 weapons detection**
- **Upgraded camera system**
- **Raptor integrated safety suite (in-progress)**



Endless Possibilities

Officer Chester



Badging Ceremony



Endless Possibilities

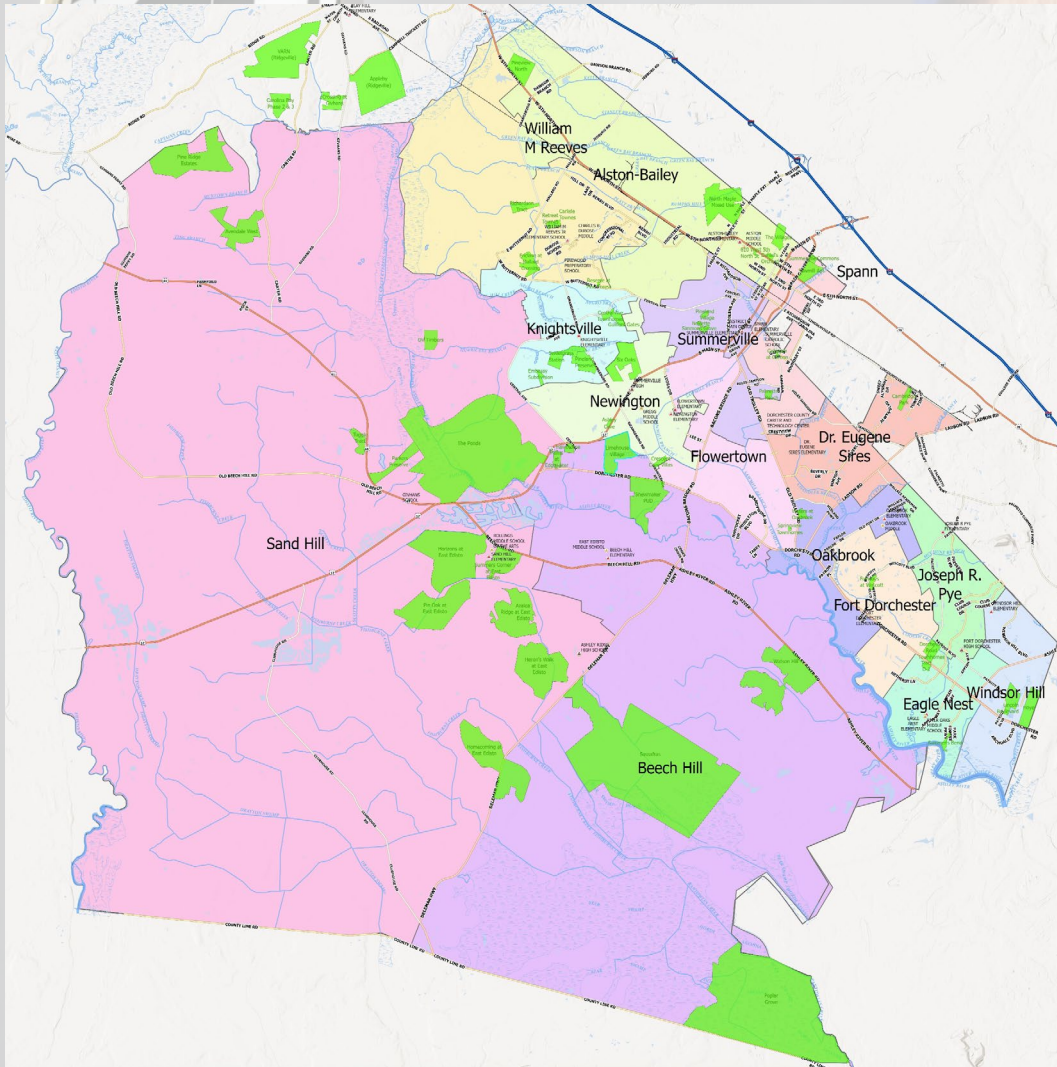
Facing the Challenges of Increased Enrollment



Endless Possibilities

Year	ABES 1007	BHES 1032	ENES 1058	ESES 1095	FES 1000	FDDES 1202	JPES 1241	KES 952	NES 968	OES 840	SHES 1176	SPANN 744	SES 804	WRES 980	WHAIS 997	TOTAL	w/PreSchl
22	711	1102	681	859	855	891	824	704	754	598	1131	573	527	915	689	11,814	12,164
23	687	1212	675	873	847	871	809	743	741	667	1245	595	565	941	664	12,135	12,485
24	740	1445	671	914	971	924	863	761	779	567	1679	568	529	956	672	13,039	13,389
25	761	1779	664	938	1023	927	866	834	787	583	2090	569	541	1000	694	14,056	14,406
26	794	2018	644	939	1085	964	879	891	803	600	2428	565	529	1008	726	14,873	15,223
27	850	2266	644	971	1150	973	883	936	828	607	2756	582	517	1015	733	15,711	16,061
28	896	2412	648	994	1164	983	894	971	864	607	2955	596	518	1029	739	16,270	16,620
29	929	2481	653	1004	1181	993	902	984	905	615	3076	603	523	1036	772	16,657	17,007
30	962	2531	661	1019	1197	1007	914	997	928	625	3138	611	529	1049	783	16,951	17,301
31	976	2562	672	1035	1218	1023	928	1010	942	633	3167	624	536	1065	791	17,182	17,532
Year	AMS 1153	DMS 954	EEMS 1000	GMS 1486	OMS 1010	RMSA 786	ROMS 1139	TOTAL	Year	ARHS 2440	FDHS 2627	SHS 3417	TOTAL	GRAND TOTAL			
22	821	951	874	853	1010	799	850	6158	22	2545	2312	3304	8161	26,133			
23	807	928	939	860	935	806	797	6072	23	2719	2290	3283	8292	26,849			
24	770	945	988	852	930	799	771	6055	24	2844	2361	3457	8662	28,106			
25	782	974	1101	872	934	799	790	6252	25	3016	2292	3547	8855	29,513			
26	820	988	1277	896	934	799	811	6525	26	3088	2220	3716	9024	30,772			
27	847	1018	1425	975	936	799	800	6800	27	3174	2161	3810	9145	32,006			
28	860	1058	1655	1035	953	799	803	7163	28	3255	2161	3918	9334	33,117			
29	860	1129	1817	1121	998	799	803	7527	29	3406	2164	4044	9614	34,148			
30	876	1200	1986	1177	1024	799	834	7896	30	3538	2153	4197	9888	35,085			
31	886	1256	2040	1231	1037	799	837	8086	31	3578	2199	4328	10,105	35,723			

Endless Possibilities



Housing Developments

Location	10- Year Forecast
Dorchester County	10,134
Town of Summerville	4,039
Future Developments	2,923
TOTAL	17,096



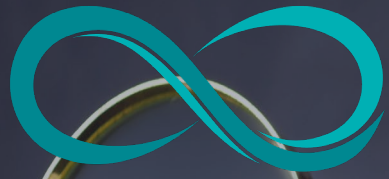
Endless Possibilities

Course of Action Response to Increased Demand

- 1. Rezoning- 6-12 Months: No Cost, Limited by space availability**
- 2. Learning Cottages (Trailers) 12-18 Months: Can be funded locally, Site Locations are minimal, Not a sustainable long-term solution**
- 3. Brick and Mortar classroom additions- 18-24 Months: Funding restraints**
- 4. New Construction- 24-36 Months: Requires a referendum**

Capital Funding for School Districts

1. **No State Funding for School Districts other than those in consolidating Districts**
2. **Options for Dorchester Two:**
 - **8% Funds - state law limits amount – utilized for limited annual building maintenance (over 30 district owned buildings and grounds) and smaller projects**
 - **TIF funding – currently funding in Oakbrook area, and in Town-Alston area**
 - **Referendum - voter approved – for new facilities due to growth, and large projects for maintenance, and to modernize older facilities**



Endless Possibilities



How do we fund a \$200M referendum with NO tax millage increase?



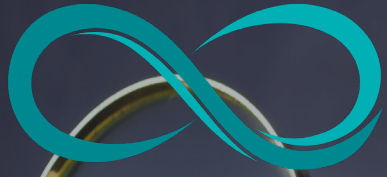
**INCREASE IN
PROPERTY VALUES**



DEBT RETIREMENT



**LONG TERM
FINANCIAL PLANNING**

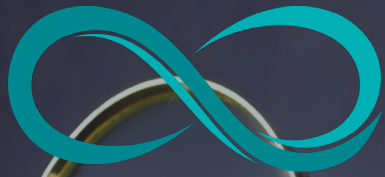


Endless Possibilities



Calculating Funding

- **Millage Rate 65 mills (no change; millage stabilization) x Increased Assessed Value = Increased Levy and/or debt capacity.**
- **Average growth rate over the past 5 years 6.6% (Model calculated at conservative 3%)**
- **Will provide funding for immediate capital needs**



Endless Possibilities

A magnifying glass with a gold frame and handle, held by a hand, focusing on a brown rectangular sign. The sign has a double-line border and contains the text 'Debt Retirement' in white serif font, with 'Debt' on the top line and 'Retirement' on the bottom line, both underlined.

Debt Retirement

- **9 bonds currently outstanding**
- **Referendum bonds are typically 20 –25 years**
- **Multiple refundings of current bonds to lower interest rate amounts has made it possible for bonds to be paid off early**
- **Leaves capacity for new bond issuances within current millage rates to allow millage stabilization**

Endless Possibilities



*Mr. Ralph Hayes
Executive Director*

Ms. Karean Troy

Chief, Military Community Relations



Closing



Endless Possibilities



Thank You



Endless Possibilities