

# 2021-22 Adopted Budget

Prepared by the District 191 Business Office  
200 W. Burnsville Pkwy.  
Burnsville, MN 55337  
952-707-2050



**Agenda IV.B.2.  
June 17, 2021**

**TO: Members, Board of Education  
Dr. Theresa Battle, Superintendent**

**FROM: Lisa Rider, Executive Director of Business Services**

**DATE: June 3, 2021**

**RE: Approve FY2021-2022 Adopted Budget**

**RECOMMENDATION: That the Board of Education approves the 2021-22 Adopted Budget providing all funds' revenues of \$176,825,094 and all funds' expenditures of \$182,025,112 waiving the minimum fund balance of 8%.**

Below is a summary of the proposed 2021-2022 Adopted Budget for your review. A full summary of the General Fund budget units and the assigned staffing are attached for review prior to action for adoption at the board meeting on June 17, 2021.

FUND	ADOPTED REVENUE BUDGET	ADOPTED EXPENDITURE BUDGET	INCR (DECR) TO FUND BALANCE
GENERAL	\$ 130,685,614	\$135,767,437	\$ (5,081,823)
FOOD SERVICE	3,774,418	3,879,852	(105,434)
COMMUNITY SERVICE	6,067,374	5,833,129	234,245
CAPITAL PROJECTS	5,000	1,776,263	(1,771,263)
DEBT SERVICE	12,316,688	11,359,615	957,073
CUSTODIAL FUNDS	-	-	-
INTERNAL SERVICE FUND	23,976,000	23,408,816	567,184
TOTAL ALL FUNDS	\$ 176,825,094	\$182,025,112	\$ (5,200,018)

The 2021-2022 Budget was prepared in accordance with the following Board of Education decisions. The parameters used to develop the budget are detailed in the presentation materials and are essentially as follows:

1. General education funding, on a per pupil basis, was kept at the same \$6,567 per adjusted pupil unit, since legislation is still undetermined.
2. Elementary class sizes district-wide averaging 25.5:1 (resulting from a range of class sizes of 20-32 depending upon grade level) and secondary class sizes averaging around 36-39:1 before considering additional supports within the building.

3. Enrollment decreased with estimates based on projected end of year Early Childhood through grade12 average daily membership of 7,837 for 2020-2021 and 7,604 for 2021-2022, a decrease of 233 average daily memberships.
4. An estimated \$532,083 reduction in Health Insurance costs across the operating funds is included as a result of the OPEB Trust implicit rate contributions.
5. There is a 2.5% increase in 2021-2022 health insurance premium costs for self-insured employee health benefits, and a 0.5% increase in 2021-2022 dental insurance premium costs.
6. The projected Unassigned Fund Balance for the General Fund is 6.46% and includes restricted and committed fund balances in the areas of: Area Learning Center, Capital, program carryover, Student Activities, and ProPay. This projected Unassigned Fund Balance is below the defined minimum unassigned general fund balance of 8% of general fund expenditures as outlined in board policy 714. Approval of this Proposed FY22 Adopted Budget will waive the defined minimum fund balance stated in board policy. The FY22 projected Unassigned Fund Balance reflects a reduction in fund balance due to expenditures exceeding revenues by \$5,081,083. It is anticipated a portion of the FY21 Audited Fund Balance will be Assigned to assist in the coverage of this anticipated use of fund balance.

This adopted budget will be revised later in the 2021-2022 year to adjust for actual data relating to Federal Relief Funds for FY21 and FY22 impacts as known, federal updates, enrollment, staffing, audited fund balances, etc.

## **GENERAL FUND**

### **Overview**

This budget utilizes the option of spending down the existing fund balance over the option of reducing expenditures potentially impacting programming that is critical to the execution of Vision One91.

Following is a list of the most significant assumptions used in developing the revenue budget:

### **Basic Allowance**

The basic funding allowance is \$6,567 per pupil unit.

### **Federal Relief Funds**

At the time of this writing, daily updates to the information around the availability, use and reporting requirements of the various federal relief funds are being received from Minnesota Department of Education. This budget reflects the inclusion of ESSER II funds in the amount of \$7,187,245. Adjustment to the amount of federal funds to be used in FY22 will be made in revisions to the budget planned for January 2022.

## **Special Education**

Special education categorical aid has been adjusted considering the special education funding and will continue to be monitored for needed adjustments at budget revision. This is an area of particular concern as there continues to be the cross-subsidy need for special education services.

## **Referendum**

The district's referendum authority of 2021-2022 is a combined \$1,827.54.50 per adjusted pupil unit prior to local optional allowance of \$424 reflecting the equivalent amounts approved by the voters in November 2019. Total referendum revenue adjusts each year in direct proportion to adjusted pupil units served. Estimated referendum revenue, including the local optional allowance, for the 2021-2022 year is approximately \$20.5 million, or roughly 16% of the total General Fund revenues.

## **Alternative Teacher Compensation**

Alternative Teacher Compensation revenue of approximately \$2.2 million is included in the 2021-2022 budget per the ProPay plan agreed to between the Board of Education and Burnsville Education Association.

## **Compensatory and English Learners**

Compensatory and English Learner revenue has decreased by about \$2 million as a result of the Fall 2020 enrollment demographics. FY22 adopted budget includes \$7.9 million. A priority is placed on covering costs of English Learner staff at all buildings. The degree of services needed by English Learners vary and our assessment of students and the responding services will fluctuate. The remainder of this funding continues to be dedicated to providing educational programs for at risk students through various district initiatives. This area continues to require cross subsidy to fully meet the needs of our English Learners.

## **Enrollment**

Enrollment is a crucial factor in determining a school district's revenue because most funding formulas are student based. Both the closure of schools and the COVID-19 impact has been considered in determining the enrollment estimate use for the 2021-2022 Adopted Budget. The 2021-2022 adopted budget assumes a decline in estimated EC-12 enrollment from an estimated 7,837 students (Average Daily Membership) in 2020-2021 to 7,604 in 2021-2022. Enrollment uncertainty creates the potential for significant increases or decreases in student-based revenue. This assumption will need to be re-evaluated when the October 1, 2021, enrollment is known and the retention factor for 2021-2022 is determined. With each student generating approximately \$11,586 in revenue, a small deviation in enrollment can produce a significant change in revenue.

## **Revenue Restrictions**

Restrictions on the use of general education revenue are offset with dedicated revenue. The following are restrictions imposed on general education revenue in 2021-2022:

Basic Skills(Compensatory, English Learners) Operating Capital

Learning & Development Gifted &  
Talented

Achievement and Integration

Area Learning Center

Alternative Teacher Compensation

Staff Development

Long-Term Facility Maintenance

## **Operating Capital Expenditures**

Operating Capital expenditures are budgeted in the General Fund but are supported by revenue that is dedicated to this purpose. Operating Capital expenditures included in this budget amount to approximately \$3 million. Every effort will be made to maximize the use of the capital funds over general funds where possible.

## **Long-Term Facilities Maintenance Revenue**

Since 2016-2017, the Long-Term Facilities Maintenance Revenue that rolls together the health and safety and the alternative facility projects is utilized within the general fund for health and safety and deferred maintenance projects. Both revenue and expenditures for projects must be recorded in the general fund for any projects funded by the Long-Term Facilities Maintenance Revenue.

## **Technology Capital Projects**

The Capital Tech Levy, originating in 2016-2017 school year generates approximately \$3.4 million annually for the purpose of technology within our district. These funds have allowed our technology budget to increase to just over \$5 million. This levy placed in a very favorable position to be able to respond to our student needs digitally throughout the pandemic.

## **Student Transportation**

The student transportation budget is based on anticipated normal service levels and reflects the most recent contract entered into with Schmitt and Sons, including a 1.30% rate increase in 2021-2022 per the contract.

## **Site Based Budgeting**

The closure of two elementary buildings and one middle school has been incorporated in the site based budgeting. The addition of our Virtual Academy has been incorporated as additional sites within the FY22 adopted budget. A large portion of the operating budget is expended at the site level based on ranges of class sizes determined by Principals and other Administrators in the staffing process. Instructional budgets, while determined on a uniform basis across the district, are distributed among various accounts and programs at the school building level. Limited unspent budget balances at the end of a year in school accounts are carried forward to the succeeding year provided the Board continues to commit the related fund balance.

## **FOOD SERVICE**

The Food Service Fund budget shows a slight decrease to fund balance estimated at (\$105,434) for the 2021-2022 year. The Summer Food Service Program has been extended through the 2021-2022 year so the first meal for students will be free each day. Any student taking a second lunch will be charged the adult meal price: \$4.15 for lunch and \$2.40 for breakfast.

## **COMMUNITY EDUCATION**

The Community Service Fund shows an increase to the fund balance of \$234,245. Community Education has been designing programs and offerings around a population that has fewer discretionary dollars to spend and yet require greater services.

The Partners Achieving Learning Success (PALS) program and Burnsville Youth Collaborative (BYC) are deliberate programmatic options to provide access to high quality academic and enrichment experiences at no cost to participants. Voluntary Pre-Kindergarten (VPK) is yet another example of the response to an opportunity that puts students in classrooms for a quality learning experience at no cost to families.

These and many other measures are aimed at providing access while acknowledging the need to ensure that the revenue stream can support the department as a whole and still provide high quality opportunities for our entire community.

## **CAPITAL BUILDING PROJECTS**

The Capital Building Projects Fund now only includes Vision One91 referendum building project funds unspent. These projects utilize the bond proceeds received in May, 2015 as a result of the Vision One91 referendum approval in February, 2015. Of the \$65 million bond issuance, approximately \$1.7 million is projected to be remaining. A delay in spending these funds has occurred due to the time and effort necessary for responding to the pandemic. These dollars are intended to be committed to projects within the scope of the original Vision One91 approved building project and referendum question. Completion of these projects is expected to be by fall of 2022.

## **DEBT REDEMPTION**

The Debt Redemption Fund is used to record revenues and expenses relating to principal and interest on bonded debt. These funds are dedicated to debt redemption and cannot be used for any other purpose.

## **FORMAT**

Attached is the General Fund budget broken into budget units and a list of employees for each budget unit. This format will allow for a greater understanding of what is included in our entire General Fund budget.

## **SUMMARY**

This budget was developed in accordance with direction provided by the Board of Education. This budget assumes a more normal learning approach for the 2021-2022 school year. There is potential for significant change as actual enrollment and staffing patterns are recognized. Our reality is that there are constant changes to staffing assignments as we adjust our staffing to best serve our student's needs. Therefore, much of the staffing details will change but overall the number of positions approved by the board to fulfill its' mission will remain within the guidelines of the proposed budget. The proposed adopted budget aligns with earlier projections.



**Agenda IV.B.1.  
June 17, 2021**

**To: Members, Board of Education  
Dr. Theresa Battle, superintendent**

**From: Lisa K. Rider, executive director of business services**

**Date: June 10, 2021**

**Re: Establish Fiscal Year 2021 Committed and Assigned Fund Balance**

**RECOMMENDATION:** that the Board of Education approves the commitment of fund balance for Fiscal Year 2021 to include fund balance resulting from carryover funds, Student Activity Funds and ProPay funds; and to assign fund balance to eliminate the projected budgetary deficit in FY22 above 6% unassigned fund balance and no greater than the projected budgetary deficit.

The Fund Balance Policy 714 revised January 11, 2018 follows GASB Statement No. 54 which allows for the highest decision-making authority of a government, our Board of Education, to commit fund balance for a specific purpose by taking action prior to year end while amounts can be determined in a subsequent period. Commitments would be calculated as follows:

**Carryover Funds:** Calculated with revenues generated by department, area or site plus any unspent expenditure budget, including any multi-year grants/donations, as audited.

**Student Activity Funds:** Calculated with revenues generated by Activity Fund less expenditures, and adjustments between accounts as necessary added to the beginning fund balance as audited.

**ProPay Funds:** Calculated with dedicated revenues unspent, as audited.

The same Fund Balance Policy 714 states the school board, by majority vote, may assign fund balances to be used for specific purposes when appropriate. An appropriation of an existing fund balance to eliminate a projected budgetary deficit in the subsequent year's budget in an amount no greater than the projected excess of expected expenditures over expected revenues satisfies the criteria to be classified as an assignment of fund balance. The exact amount of the assignment will be determined at the time of fund balance calculations for June 30, 2021 year end.



# **BURNSVILLE-EAGAN-SAVAGE**

**INDEPENDENT SCHOOL DISTRICT 191**

## **PROPOSED ADOPTED BUDGET 2021-2022**

**Presenters: Theresa Battle, superintendent and Lisa Rider,  
executive director of Business Services**

***Future Ready. Community Strong.***

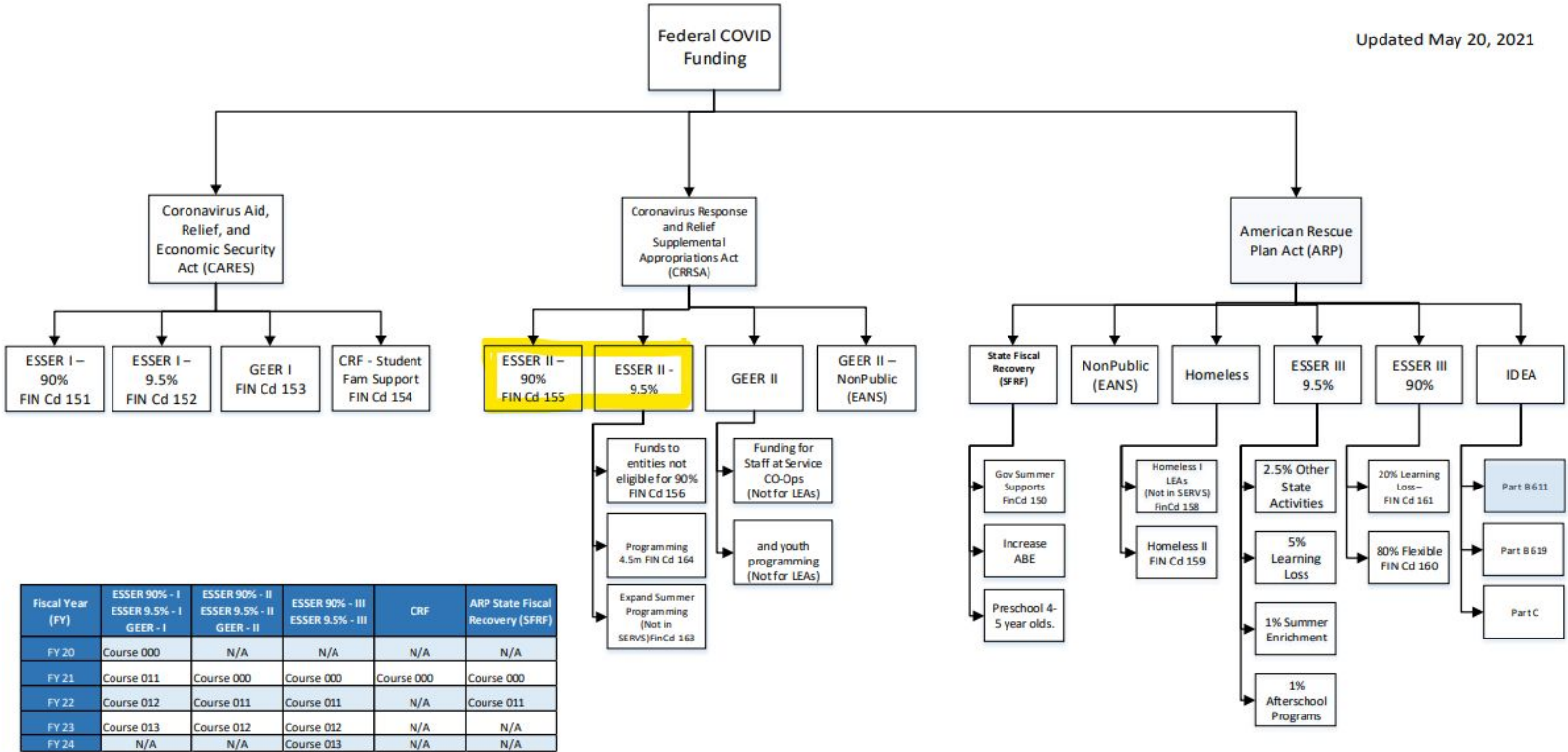


# Proposed Adopted Budget Topics

- ❖ Federal Relief Funds Summary
- ❖ Strategies to build the FY22 budget
- ❖ Staff and Community Input and Board Meetings
- ❖ Current Fund Balance
- ❖ Proposed FY22 Budget:
  - General Fund, Food Service, Community Service Fund, and Debt Service
- ❖ Next Steps

Federal  
Relief  
Funds  
Summary

Updated May 20, 2021



Signed into Law: March 27, 2020  
Eligible: to September 30, 2022 (CRF available through December 31, 2020)

Signed into Law: December 27, 2020  
Eligible: to September 30, 2023

Signed into Law: March 11, 2021  
Eligible: to September 30, 2024 (CRF available through September 30, 2023)

# American Rescue Plan (ARP)

## ESSER III

The Elementary and Secondary School Emergency Relief Fund

Minnesota: ~\$1.2 billion

**90%** formula to LEAs (based on FFY20/SFY21 Title I)

- Same uses as ESSER I and II
- 20% of each LEA's funds must be spent to address lost learning time
  - In Minnesota, this will use a separate FIN code

**9.5%** in state activities, decided by Governor's Office and MDE

- Comes with spending category requirements. Public comment on plan.

\*LEA - Local Educational Agencies

\*FIN - Finance

Application by: October 1, 2021

# Period of Availability

## ESSER I

- Start: **March 13, 2020**  
*UFARS for FY20 is closed.*
- End: **September 30, 2022**

## ESSER II

- Start: **July 1, 2020**  
*Legally, March 13, 2020; however, UFARS for FY20 is closed.*
- End: **September 30, 2023**

## ESSER III

- Start: **July 1, 2020**  
*Legally, March 13, 2020; however, UFARS for FY20 is closed.*
- End: **September 30, 2024**

# LEA ESSER III Plan

- The LEA ESSER III plan **using both FIN160 and FIN161** must address
  - identified needs related to the COVID-19 pandemic, and
  - resulting impacts on student experience, access, representation, participation, and outcomes

# Safe Return to School Plan Requirements

- Must develop with community input
- **Must publish for public comment within 30 days**
- Must post and provide a link to the plan
- Must post a summary of the public comment
- See requirements in the federal [Interim Final Rule](#).

# Community Engagement in Funding Plan Development

- Must engage community members (including families, students, staff) in the ESSER III spending plan development
  - Take attendance, including the role of the individuals who participate
- Retain documentation of key findings from these engagement activities
- Demonstrate how findings are used in plan development

# 2021-2022 Adopted Budget



# ESSER II included in FY22

## FY22 FEDERAL EMERGENCY RELIEF FUNDS

### ELEMENTARY AND SECONDARY SCHOOL EMERGENCY (ESSER II)

#### ISD 191 Allocations:

\$7,187,155

#### Spending Timeline:

7/1/2020-9/30/2023

#### Spending Parameters:

- ❖ Same uses as ESSER I
- ❖ Plus
  - Counteracting the effects of lost learning time
  - Preparing for reopening Fall 2021
  - Air quality projects

#### ISD 191 Expenditures:

- ❖ \$3,900,000 used for existing expenditures to allow for continuity of services and programs without reductions for FY22
- ❖ \$3,287,155 used for additional staffing and materials needed for programming needs to counteract the effects of interrupted learning time

## Budget Strategies for FY22

- ❖ Right-sizing of the FTE's (Full Time Equivalent) staff based upon enrollment
- ❖ Use of restricted funds before general undesignated funds
- ❖ Strategic use of Federal Resources to equitably address the impact of the pandemic
- ❖ Prioritize investment for PK-12 Pathways

# Budget Process

## ❖ Board Meetings

- January 28 - Report
- February 25 - Report
- March 25 - Report
- June 10 - Report
- June 17 - Action to Approve

## ❖ Board Workshops

- February 11
- March 11
- March 25

# Budget Input

## Principal and Administrative Budget Meetings

- ❖ December 22
- ❖ January 13
- ❖ January 27
- ❖ February 10
- ❖ February 26

Online Input from Public February through March

# Budget Input

- ❖ Various staff meetings; Principals, Department Heads met with HR on staffing, and Finance on non-staff budgets.

# Change In Fund Balance

FUND	PROJECTED FUND BALANCE 6/30/21	REVENUE BUDGET	EXPENDITURE BUDGET	PROJECTED FUND BALANCE 6/30/22
GENERAL	\$ 21,483,321	\$ 130,685,614	\$ 135,767,437	\$ 16,401,498
FOOD SERVICE	1,186,903	3,774,418	3,879,852	1,081,469
COMMUNITY SERVICE	1,411,659	6,067,374	5,833,129	1,645,904
CAPITAL PROJECTS	1,771,263	5,000	1,776,263	(0)
DEBT SERVICE	4,296,039	12,316,688	11,359,615	5,253,112
CUSTODIAL FUNDS	-	-	-	-
INTERNAL SERVICE FUND	24,805,236	23,976,000	23,408,816	25,372,420
TOTAL ALL FUNDS	\$ 54,954,420	\$ 176,825,094	\$ 182,025,112	\$ 49,254,402

## General Fund Assumptions

- ❖ General Education Formula - \$6,567
  - (0% increase)
- ❖ Elementary Class size targeted at 25.5:1
  - with a range of 20 – 32
- ❖ Secondary Class size targeted at 36-39:1
  - with a range based on subject

## General Fund Assumptions

- ❖ Enrollment decrease of 233 students
- ❖ OPEB transfer to the operating funds of approximately \$532,083
- ❖ Two and one-half percent increase in health insurance and one-half percent increase in dental insurance

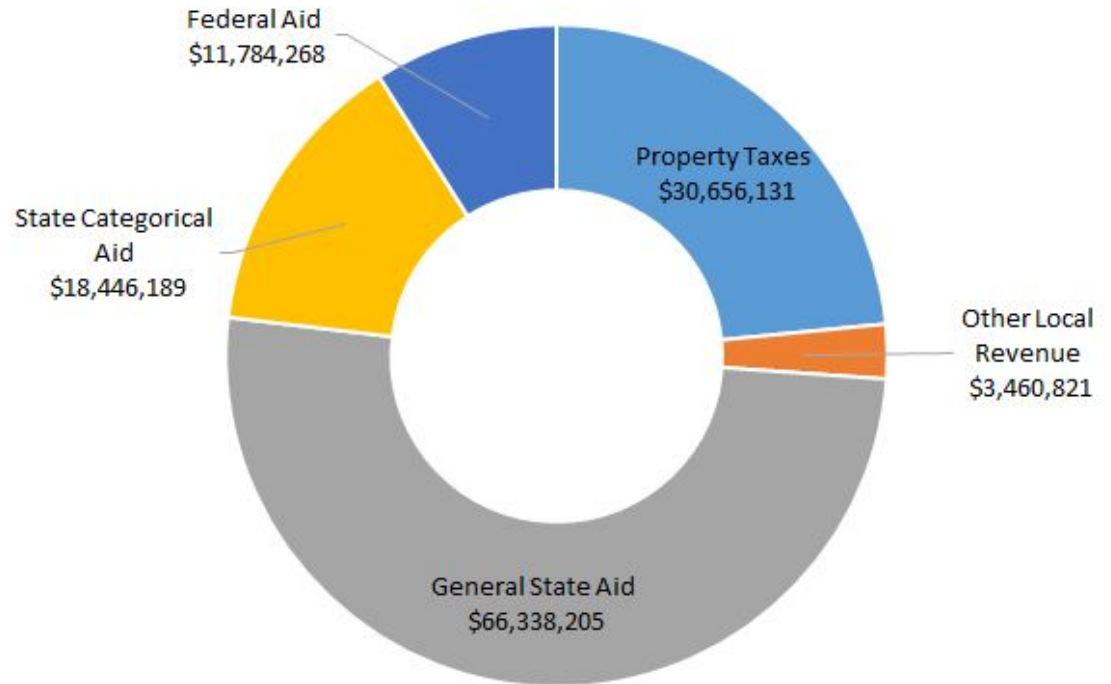


# General Fund Budget Comparative Summary

	Adopted Budget 2020-21	January Revised Budget 2020-21	April Revised Budget 2020-21	Adopted Budget 2021-22
<b>Total Beginning Fund Balance</b>	\$ 14,498,325	\$ 20,326,027	\$ 20,326,027	\$ 21,483,321
<b>Revenues</b>	126,834,491	129,516,287	129,516,287	123,498,369
<b>Federal Cares Revenues</b>		4,227,574	4,227,574	7,187,245
<b>Expenditures</b>	127,825,136	130,052,781	128,358,993	132,480,192
<b>Federal Cares Expenditures</b>		4,227,574	4,227,574	3,287,245
<b>Variance (Revenues - Expenditures)</b>	(990,645)	(536,494)	1,157,294	(5,081,823)
<b>Total Ending Fund Balance</b>	\$ 13,507,680	\$ 19,789,533	\$ 21,483,321	\$ 16,401,498
<b>Breakdown of Fund Balance Categories</b>				
<b>Nonspendable</b>	\$ 469,392	\$ 401,522	\$ 401,522	\$ 367,587
<b>Restricted</b>	3,170,301	7,348,102	7,348,102	5,476,553
<b>Committed</b>	1,096,765	1,818,986	968,986	1,784,069
<b>Assigned</b>		-	4,810,000	-
<b>Unassigned</b>	8,771,222	10,220,923	7,954,711	8,773,289
<b>Total Ending Fund Balance</b>	\$ 13,507,680	\$ 19,789,533	\$ 21,483,321	\$ 16,401,498
<b>Unassigned Fund Balance %</b>	6.86%	7.61%	6.00%	6.46%

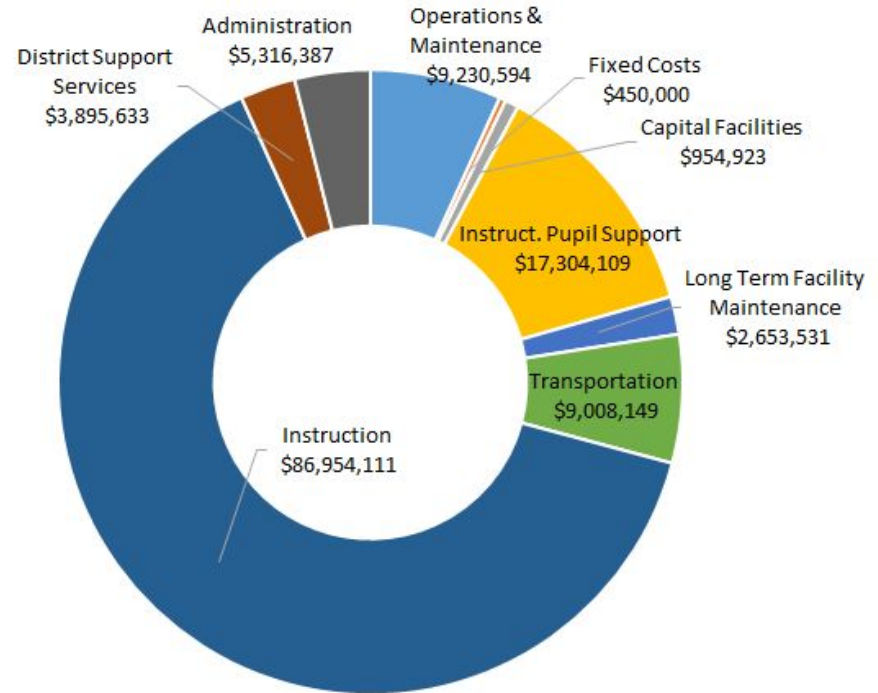
# General Fund Revenue

\$130,685,614



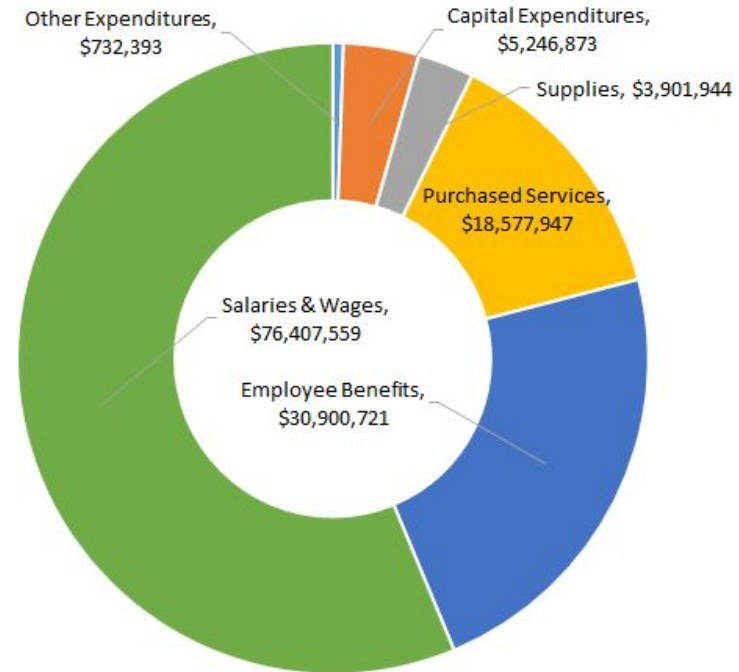
# General Fund Expenditures by Program

\$135,767,437



# General Fund Expenditures by Object

\$135,767,437

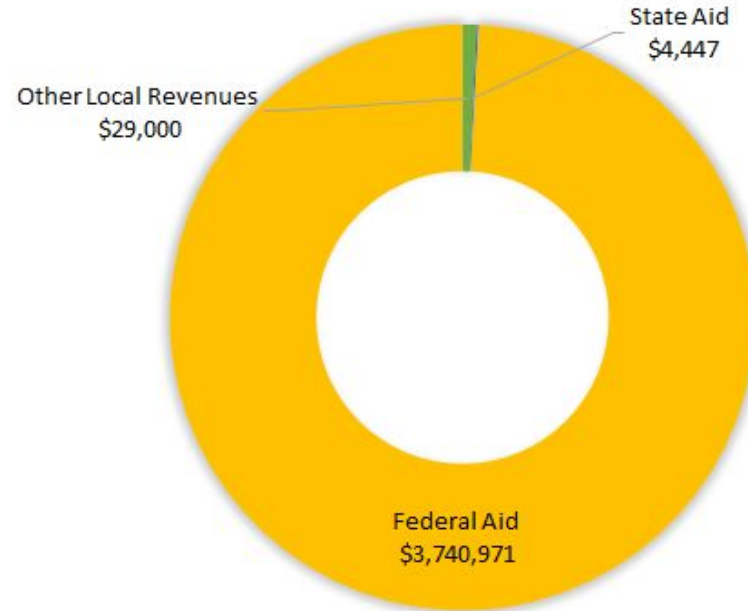


## Food Service Fund

Projected Beginning Fund Balance 6/30/21	\$ 1,186,903
Revenues	\$ 3,774,418
Expenses	\$ 3,879,852
Net Change in Fund Balance	\$ (105,434)
Projected Ending Fund Balance 6/30/21	\$ 1,081,469

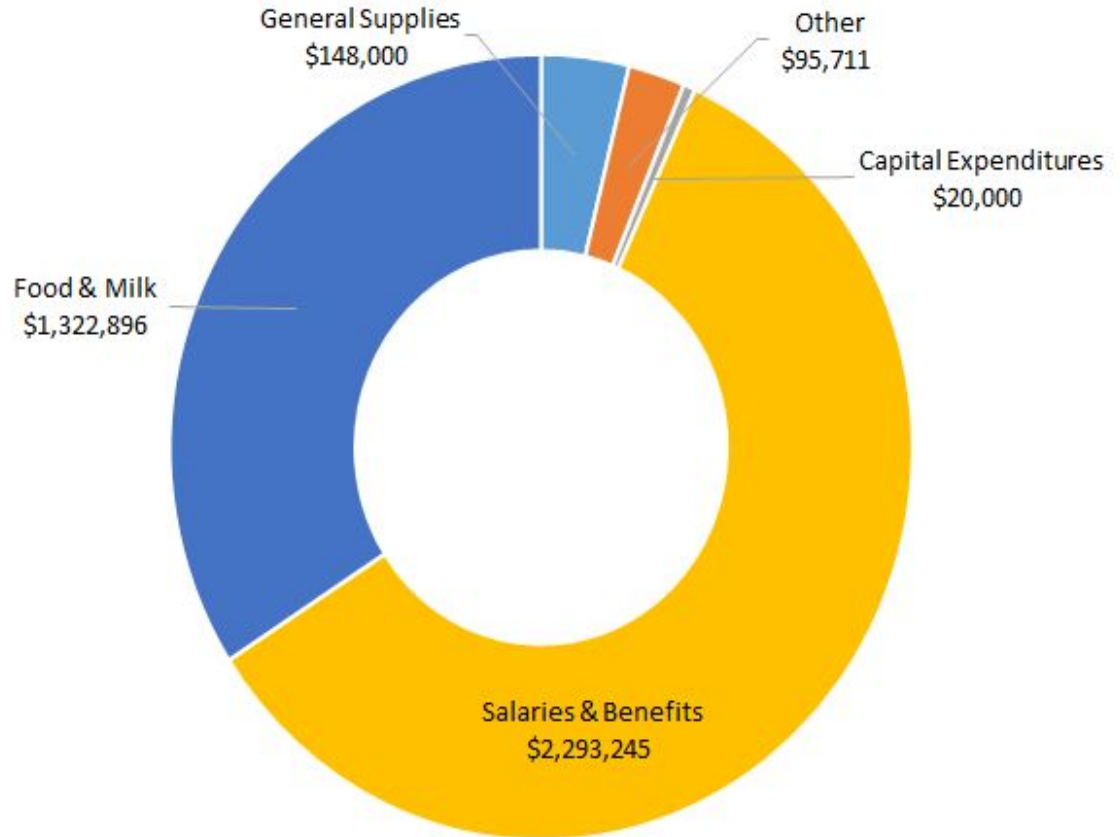
# Food Service Revenue

\$3,774,418



# Food Service Expenditures by Object

\$3,879,852



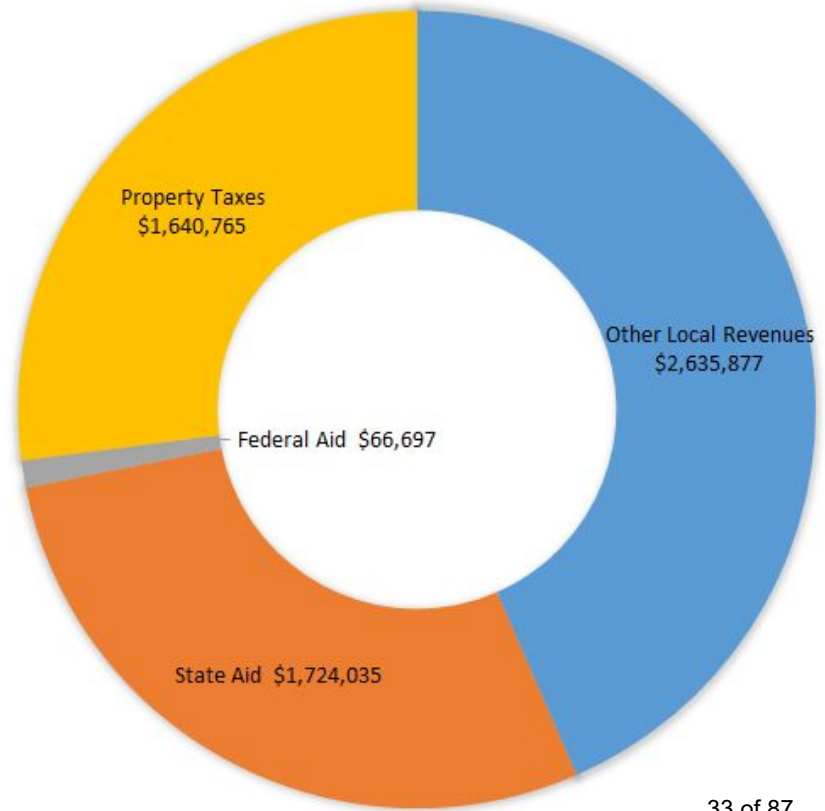
## Community Service Fund

Projected Beginning Fund Balance 6/30/21	\$ 1,411,659
Revenues	\$ 6,067,374
Expenses	\$ 5,833,129
Net Change in Fund Balance	\$ 234,245
Projected Ending Fund Balance 6/30/22	\$ 1,645,904



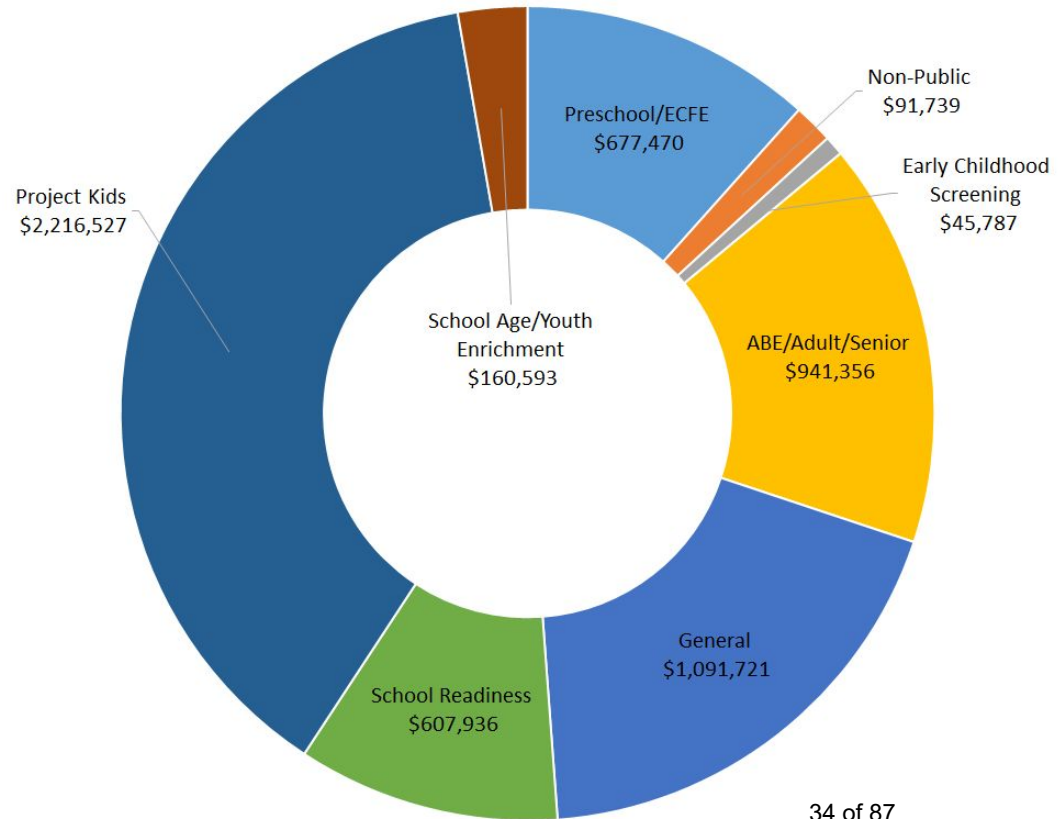
# Community Service Revenue

\$6,067,374



# Community Service Expenditures by Program

\$5,833,129



## Capital Project Fund

Projected Beginning Fund Balance*	\$ 1,771,263
Revenues	\$ 5,000
Expenses	\$ 1,776,263
Net Change in Fund Balance	\$ (1,771,263)
<i>* updated projected based on balances through June 2021</i>	
Projected Ending Fund Balance 6/30/22	\$ (0)

## Debt Service Funds

Projected Beginning Fund Balance 6/30/21	\$ 4,296,039
--	--------------

Revenues	\$ 12,316,688
----------	---------------

Expenses	\$ 11,359,615
----------	---------------

---

Net Change in Fund Balance	\$ 957,073
----------------------------	------------

Projected Ending Fund Balance 6/30/22	\$ 5,253,112
---------------------------------------	--------------

# Adopted Budget

Next Steps – Formal Board Approval at June 17, 2021  
Board Meeting



## **2022 Adopted Budget by Budget Unit**

(Staffing and budgeted Full-time Equivalent (FTE) as of May 13, 2021)

		Payroll Expenses	Non-Payroll Expenses	Adopted Budget	Adopted FTE's
<b>01010</b>	<b>General Elementary Instruction Personnel</b>	17,771,419	0	17,771,419	144.50
Provides the funding necessary to provide instruction in the core academic subjects of language arts, math, and social studies at the district's eight elementary schools.					
<b>01030</b>	<b>General Elementary Instruction Subs</b>	0	300,000	300,000	0.00
Provides the funding necessary for elementary substitutes.					
<b>02010</b>	<b>General Middle School Instruction Personnel</b>	5,144,980	0	5,144,980	41.69
Provides the funding necessary to offer courses in the core academic subjects of language arts, math, science, social studies, and world language at the district's three middle schools.					
<b>02020</b>	<b>General Middle School Instruction Subs</b>	0	170,000	170,000	0.00
Provides the funding necessary for middle school substitutes.					
<b>03010</b>	<b>General High School Instruction Personnel</b>	6,626,837	0	6,626,837	54.34
Provides the funding necessary to offer courses in the core academic subjects of language arts, math, science, social studies, and world language at the district's high school.					
<b>03020</b>	<b>General High School Instruction Subs</b>	0	150,000	150,000	0.00
Provides the funding necessary for high school substitutes.					

## **2022 Adopted Budget by Budget Unit**

(Staffing and budgeted Full-time Equivalent (FTE) as of May 13, 2021)

		Payroll Expenses	Non-Payroll Expenses	Adopted Budget	Adopted FTE's
<b>04010</b>	<b>PhyEd, Health, Art, Music Personnel</b>	4,843,057	3,300	4,846,357	43.38
Provides the funding to provide K-12 physical education, 6-12 health, K-12 visual arts, K-12 general/vocal music, and 6-12 Instructional music instruction.					
<b>05010</b>	<b>Long Term Subs</b>	250,000	0	250,000	0.00
Provides the funding necessary for payment of Long Term Subs K-12.					
<b>06000</b>	<b>Health Care Teacher</b>	87,494	0	87,494	1.00
Provides the funding to operate the instructional program of health care.					
<b>06010</b>	<b>Family and Consumer Science Instruction</b>	661,144	0	661,144	6.21
Provides the funding to operate the instructional program of family and consumer science.					
<b>06020</b>	<b>Trade and Industrial Education</b>	472,032	0	472,032	4.00
Provides the funding to operate the instructional program of trade and industrial education.					
<b>06030</b>	<b>Career and Tech General Education</b>	114,792	0	114,792	0.90
Provides the funding for general career and tech education in a variety of career objectives.					
<b>06040</b>	<b>Business and Office Education</b>	377,011	0	377,011	3.30
Provides the funding to operate the instructional program of business and office education.					
<b>06050</b>	<b>Partnerships</b>	199,780	7,000	206,780	1.00
Provides the funding for Strategic Partnerships and Pathways and related efforts in connecting our students with community opportunities.					



## **2022 Adopted Budget by Budget Unit**

(Staffing and budgeted Full-time Equivalent (FTE) as of May 13, 2021)

		Payroll Expenses	Non-Payroll Expenses	Adopted Budget	Adopted FTE's
<b>06060</b>	<b>PostSecondary Tuition Career Tech</b>	0	375,000	375,000	0.00
Provides the budget for secondary students to attend Career & Technical classes.					
<b>06070</b>	<b>PostSecondary CIS PSEO</b>	0	724,000	724,000	0.00
Provides the budget for secondary students to attend classes through the District's various University and College programs including college in the schools (CIS) and post-secondary enrollment options (PSEO).					
<b>07010</b>	<b>K12 Media Services</b>	721,884	0	721,884	7.75
Provides the funding to provide K-12 media services- media specialists and media educational assistants.					
<b>07020</b>	<b>K12 Gifted and Talented</b>	295,272	0	295,272	3.00
Provides the funding to provide for a gifted and talented instructor at each elementary school.					
<b>07030</b>	<b>612 Guidance Services</b>	931,814	0	931,814	11.00
Provides the funding to provide 6-12 guidance services.					
<b>07040</b>	<b>912 Deans</b>	670,370	0	670,370	6.00
Provides the funding to provide 6-12 Dean support.					
<b>07060</b>	<b>English Second Language Learner</b>	4,278,970	75,150	4,354,120	41.00
Provides funding for the district's K-12 English Second Language Learner program and includes salaries, benefits, and other instructional expenses.					

## **2022 Adopted Budget by Budget Unit**

(Staffing and budgeted Full-time Equivalent (FTE) as of May 13, 2021)

		Payroll Expenses	Non-Payroll Expenses	Adopted Budget	Adopted FTE's
<b>08010</b>	<b>Site Allocation of Instructional/Operational Resources</b>	4,611	458,042	462,653	0.00
Provides the per pupil funding allocation for instructional and operational related expenses. This funding is intended to cover the costs of building level equipment repairs, purchase of general supplies, classroom supplies, telephone, etc.					
<b>08020</b>	<b>Building Level Copier Leases</b>	0	82,250	82,250	0.00
Provides the funding for the monthly lease costs of the main multi-functional device within each school.					
<b>09010</b>	<b>Special Ed Salaries/Benefits</b>	24,716,278	0	24,716,278	305.03
Provides funding for staff costs necessary to operate the Office of Student Support Services. Most, but not all of these expenditures, are either reimbursed with state or federal special education funds or are related to general education functions.					
<b>09030</b>	<b>Special Ed Purchased Services</b>	0	1,431,400	1,431,400	0.00
Provides funding for Student Support Services purchased services, supplies and equipment.					
<b>09040</b>	<b>Special Ed Transportation</b>	0	4,208,000	4,208,000	0.00
Required transportation, purchased services, supplies and equipment for students served by Student Support Services.					
<b>10010</b>	<b>Alternative Learning Center</b>	4,324,623	295,605	4,620,228	31.65
Provides categorical funds to operate the alternative high school, school within a school, extended day and extended year programs for elementary and middle school students.					

## **2022 Adopted Budget by Budget Unit**

(Staffing and budgeted Full-time Equivalent (FTE) as of May 13, 2021)

		Payroll Expenses	Non-Payroll Expenses	Adopted Budget	Adopted FTE's
<b>10020</b>	<b>Licensed Mental Health Services</b>	0	200,000	200,000	0.00
Provides categorical funding to support a financial partnership with Headway, who are able to respond to pressing mental health needs, proactively support student success, and be readily available in case of a crisis.					
<b>10030</b>	<b>K12 Nursing/Health Services</b>	1,038,774	37,960	1,076,734	10.88
Provides funding to operate the district health services department including salaries, benefits and other operating expenses for the district school health offices. Certain FTEs may also be included in Special Ed Salaries, 09010.					
<b>11010</b>	<b>Co-Curricular Activities (Non-Athletic)</b>	294,786	27,797	322,583	0.00
Provides the funding to support co-curricular activities. These funds are supplemented through ticket sales, fund raising, donations, etc.					
<b>11011</b>	<b>Student Activities</b>	0	600,000	600,000	0.00
Provides funding to provide Student Activities. These funds are supplemented through fundraising and donations.					
<b>11020</b>	<b>High School Interscholastic Athletics</b>	882,635	403,040	1,285,675	2.00
Provides the funding to provide high school athletics. These funds are supplemented through ticket sales, fund raising, donations, etc.					
<b>12010</b>	<b>Title I, Part A Regular Improving Basic Programs</b>	1,867,575	118,224	1,985,799	15.32
Provides funding to help ensure all children meet challenging state academic standards. Includes staffing, instructional, Supplemental Education Services and staff development expenses.					

## **2022 Adopted Budget by Budget Unit**

(Staffing and budgeted Full-time Equivalent (FTE) as of May 13, 2021)

		Payroll Expenses	Non-Payroll Expenses	Adopted Budget	Adopted FTE's
<b>12020</b>	<b>Title II, Part A Regular Teacher/Principal Training &amp; Recruiting</b>	251,201	55,000	306,201	2.14
Funding pays a portion of teacher and administrative salaries of highly qualified professionals working to improve student achievement.					
<b>12030</b>	<b>Title III Regular Limited English Proficient Students</b>	150,646	32,000	182,646	1.25
Funding supports ESL personnel, their professional development, and for interpretation needs of our LEP families.					
<b>12040</b>	<b>Title IV Regular Limited English Proficient Students</b>	78,042	46,827	124,869	0.60
Provides funding to provide students with a well rounded education, support safe and healthy students and support effective use of technology for personalized learning opportunities.					
<b>12050</b>	<b>Carl Perkins Grant</b>	0	50,000	50,000	0.00
Funding pays for professional development and supplies to teachers of Family and Consumer Science, Business, and Technology Education at Burnsville High School.					
<b>13010</b>	<b>QComp/ProPay</b>	2,134,514	3,200	2,137,714	6.00
Provides for expenditures associated with the district's Q-Comp / Pro-Pay programs including salaries and benefits, stipends, performance incentives and other operating expenses.					
<b>13020</b>	<b>Integration and Achievement</b>	1,992,709	32,107	2,024,816	24.36
Provides for expenditures related to the achievement and integration program including salaries and benefits, professional development and other operating expenses.					

## **2022 Adopted Budget by Budget Unit**

(Staffing and budgeted Full-time Equivalent (FTE) as of May 13, 2021)

		Payroll Expenses	Non-Payroll Expenses	Adopted Budget	Adopted FTE's
<b>13030</b>	<b>Compensatory Education</b>	2,592,667	75,000	2,667,667	24.08
Provides funding for compensatory programs and initiatives to meet the educational needs of students who are under prepared or are not meeting age appropriate performance standards.					
<b>14010</b>	<b>Technology</b>	777,985	922,730	1,700,715	6.50
Provides funding to manage and support the district's technologies including digital learning specialist, instructional, operational resources, equipment and supplies including the District's intranet and telephone systems.					
<b>14020</b>	<b>Technology: Capital Levy</b>	1,230,455	2,181,451	3,411,906	12.00
Provides funding of technical staff, 1:1 initiative, and technical training of instructional staff.					
<b>14030</b>	<b>Technology: ERP and SIS Systems</b>	0	371,791	371,791	0.00
Provides funding to manage the business management software for HR/Business, Finance, Budgeting, Archival (ERP) and Student Information Systems (SIS)					
<b>15010</b>	<b>Instructional Development</b>	124,926	126,550	251,476	0.50
Provides the funding for district professional development (PD) to support the acquisition of district learning goals. Includes operational resources, purchased services, equipment, supplies, and building level PD allocations.					
<b>15020</b>	<b>Curriculum Development</b>	364,987	215,776	580,763	1.49
Provides the funding for the ongoing development of a comprehensive written curriculum. Also includes operational resources, purchased services, equipment and supplies.					

## **2022 Adopted Budget by Budget Unit**

(Staffing and budgeted Full-time Equivalent (FTE) as of May 13, 2021)

		Payroll Expenses	Non-Payroll Expenses	Adopted Budget	Adopted FTE's
<b>15030</b>	<b>Curriculum Adoptions</b>	0	884,000	884,000	0.00
Provides the funding for the purchase of curriculum resources to support delivery of the written curriculum including textbooks, manipulatives, software and software subscriptions.					
<b>15040</b>	<b>Assessment Program</b>	163,084	117,300	280,384	1.00
Provides the funding necessary to implement required accountability assessments to monitor student progress toward achievement of academic standards through software fees, purchased services, equipment and supplies.					
<b>16010</b>	<b>Board of Education</b>	45,724	75,782	121,506	7.00
Provides the funding for the School Board. Includes School Board stipends, District elections, legal fees and other expenses related to Board initiatives.					
<b>16020</b>	<b>Superintendent</b>	378,087	97,065	475,152	2.00
Provides the funding to operate the office of Superintendent of Schools to support the District's mission, vision, and instructional goals.					
<b>16030</b>	<b>Assistant Superintendent</b>	259,054	41,800	300,854	1.50
Provides the funding to operate the office of the Assistant Superintendent of Schools to support the development, operation and evaluation of the district's elementary and secondary instructional programs.					
<b>16040</b>	<b>Human Resources</b>	599,171	151,815	750,986	5.00
Provides the funding to support operation of the Human Resources office including advertising, recruiting, hiring, staff development, legal fees, software applications, and compliance requirements.					

## **2022 Adopted Budget by Budget Unit**

(Staffing and budgeted Full-time Equivalent (FTE) as of May 13, 2021)

		Payroll Expenses	Non-Payroll Expenses	Adopted Budget	Adopted FTE's
<b>16041</b>	<b>Workers Comp, Unemployment, &amp; Premiums for Property Casualty Liability Insurance</b>	813,000	450,000	1,263,000	0.00
Provides the funding to support the District's workers comp, unemployment, and property, casualty liability insurance and contingencies for deductibles.					
<b>16042</b>	<b>Flexible Savings Accounts/FSA</b>	864,000	0	864,000	0.00
Provides expenditures associated with the District's Flexible Benefit Program. A Health Care FSA is a pre-tax benefit account that's used to pay for eligible medical, dental, and vision care expenses that are not covered by your health care plan or elsewhere.					
<b>16050</b>	<b>Business</b>	1,066,667	177,608	1,244,275	9.50
Provides the funding to operate the school district's business services- including finance, payroll, and mandatory state and federal reporting.					
<b>16054</b>	<b>Business OPEB Implicit Chargeback</b>	(532,083)	412,363	(119,720)	0.00
Represents allowable medical, dental, and life insurance costs reimburseable by the district's other postemployment benefits trust (credit to general fund budget) and costs associated with required pension entries for statewide PERA and TRA programs					
<b>16060</b>	<b>Communications and Marketing</b>	328,778	212,000	540,778	3.00
Provides the funding to the District's communications and marketing initiatives, maintenance of District websites, social networks, publications, etc.					

## **2022 Adopted Budget by Budget Unit**

(Staffing and budgeted Full-time Equivalent (FTE) as of May 13, 2021)

		Payroll Expenses	Non-Payroll Expenses	Adopted Budget	Adopted FTE's
<b>16070</b>	<b>Student Registration and Census</b>	436,485	14,786	451,271	4.00
Provides the funding to operate the school district's student registration, enrollment, and reporting services.					
<b>17010</b>	<b>Voluntary PreKindergarten</b>	1,269,823	40,700	1,310,523	26.87
Provides the funding to operate the Voluntary Pre-Kindergarten Program.					
<b>17011</b>	<b>Elementary Administrators</b>	1,544,948	0	1,544,948	8.00
Provides the funding to operate the elementary principals' offices at each school.					
<b>17012</b>	<b>Elementary Building Clerical</b>	669,567	0	669,567	9.00
Provides the funding to operate the elementary principals' offices at each school.					
<b>17013</b>	<b>Elementary EAs</b>	483,036	0	483,036	14.48
Provides the funding various administrative and educational roles at each school.					
<b>17021</b>	<b>Secondary Administrators</b>	2,083,845	0	2,083,845	11.00
Provides the funding to operate the secondary principals' offices at each school.					
<b>17022</b>	<b>Secondary Building Clerical</b>	936,085	0	936,085	15.00
Provides the funding to operate the secondary principals' offices at each school.					
<b>17025</b>	<b>Miscellaneous Stipends</b>	56,195	0	56,195	0.00
Provides the funding for miscellaneous stipends and extra hours that are currently not attached to another budget unit.					



## **2022 Adopted Budget by Budget Unit**

(Staffing and budgeted Full-time Equivalent (FTE) as of May 13, 2021)

		Payroll Expenses	Non-Payroll Expenses	Adopted Budget	Adopted FTE's
<b>17027</b>	<b>DEC CLERICAL</b>	59,621	0	59,621	1.00
Provides the funding to operate the Administrative Services at Diamondhead.					
<b>18010</b>	<b>Student Transportation</b>	152,620	4,647,529	4,800,149	2.00
Provides the funding to transport eligible students to and from school including during regular and extended year/day terms.					
<b>19010</b>	<b>Custodial</b>	4,996,839	814,154	5,810,993	69.40
Provides the funding to operate the District's custodial services. Includes supplies, equipment and contracted services.					
<b>19020</b>	<b>Building, Grounds and Maintenance</b>	257,568	1,103,760	1,361,328	3.50
Provides the funding to operate the District's building, grounds and maintenance departments. Includes supplies, equipment and contracted services.					
<b>19030</b>	<b>Environmental Health and Safety/ADA Compliance</b>	242,768	2,410,763	2,653,531	2.60
Provides the funding to operate the District's environmental health and safety department as well as Long Term Facilities Maintenance Projects. Includes supplies, equipment and contracted services.					
<b>19040</b>	<b>Facility Leases</b>	0	824,923	824,923	0.00
Provides the funding for the District's facility leases for Pates Stadium, Ice Arena and Diamondhead leasehold improvements.					

## **2022 Adopted Budget by Budget Unit**

(Staffing and budgeted Full-time Equivalent (FTE) as of May 13, 2021)

		Payroll Expenses	Non-Payroll Expenses	Adopted Budget	Adopted FTE's
<b>19041</b>	<b>Facility Rental</b>	140,530	12,672	153,202	1.00
Provides the funding for the expenditures related to rental of the District's facilities.					
<b>19050</b>	<b>Warehouse and Purchasing</b>	119,795	0	119,795	1.50
Provides the funding to operate the school district's warehouse and purchasing departments.					
<b>19060</b>	<b>Utilities</b>	0	1,916,000	1,916,000	0.00
Provides the funding for the District's utilities.					
<b>20010</b>	<b>School Resource Officers</b>	0	108,000	108,000	0.00
Provides the primary funding for school police resource officers for the district's secondary schools.					
<b>20030</b>	<b>Safe Schools</b>	289,238	120,537	409,775	0.00
Provides the primary funding for additional Deans at Middle Schools.					
<b>21000</b>	<b>Miscellaneous State and Local Grants</b>	22,320	46,400	68,720	0.00
Provides the primary funding for various grants received outside of Federal and Special Education funding.					
<b>21100</b>	<b>Emergency Relief Aid</b>	3,287,245	0	3,287,245	12.00
Federal emergency relief funds provided to address the impact that COVID-19 has had, and continues to have, on elementary and secondary schools across the Nation.					
<b>Total General Fund Expenditure Budget</b>		<b>107,308,280</b>	<b>28,459,157</b>	<b>135,767,437</b>	
<b>Total General Fund Period FTEs</b>					<b>1,023.22</b>

Staffing Detail by Budget Unit as of May 13, 2021

	Location Description	Full Name	FTE
<b>01010 - Elem Core Instr Person</b>			
<b>1st Grade Tcr</b>	<b>Edward Neill Elementary</b>	Allman, Kellie R	1.00
		Olsen, Laura	1.00
		Webster, Susan M	1.00
	<b>Gideon Pond Elementary</b>	Odegard, Elisa	1.00
		Rollie, Alexis K	1.00
		Selby, Hannah	1.00
	<b>Harriet Bishop Elementary</b>	Anderson, Megan	1.00
		Dahl, Sabrina Lynn	1.00
		Marshall, Debra L	1.00
		Strowbridge, Staci	1.00
	<b>Hidden Valley Elementary</b>	Hiebert, Tracy	1.00
		Ibrahim, Hodan	1.00
		Kachman, Angela	1.00
	<b>Rahn Elementary</b>	Gambucci, Ann Marie	1.00
		Hoins, Dawn	1.00
	<b>Sky Oaks Elementary</b>	Bueno, Holly A	1.00
		Prugh Ploehn, Kathryn A	1.00
		Sands, Anne	1.00
	<b>Virtual Academy - Elementary</b>	Putman, Tanja	0.50
		Wilson, Elizabeth J	0.50
	<b>Vista View Elementary</b>	Ditmarsen, Sandra L	1.00
		(blank)	2.00
	<b>Wm Byrne Elementary</b>	Orlando, Kari R	1.00
		Risteau, Jill A	1.00
		Simpson, Lisa	1.00
		Smith, Melissa	1.00
<b>2nd Grade Tcr</b>	<b>Edward Neill Elementary</b>	Lamb, Cynthia L	1.00
		Lenton, Tiffany	1.00
	<b>Gideon Pond Elementary</b>	Ambuehl, Jennifer A	1.00
		Kleven, Mark A	1.00
		Stoneking, Stacy	1.00
	<b>Harriet Bishop Elementary</b>	Engen, Amy	1.00
		Jarzyna-ingles, Anne W	1.00
		Omodt, Jane	1.00
		Schafer, Kristy J	1.00
	<b>Hidden Valley Elementary</b>	Briggs, Lori A	1.00
		Langreck, Lori	1.00
		Tollerud, Teresa Jo	1.00
		Keuler, Lori J	1.00
	<b>Rahn Elementary</b>	Plucinak, Jody L	1.00
		Ostdiek, Teresa L	1.00
	<b>Sky Oaks Elementary</b>	Plaschko, Mary Beth	1.00
		Teien, Joan K	1.00
		Cooper, Kirenza I	0.50
	<b>Virtual Academy - Elementary</b>	Gravink, Ashley	0.50
		Gandrud, Jennifer L	1.00
	<b>Vista View Elementary</b>	Steeg, Kimberly Kaye	1.00
		Kohn, Grace	1.00
	<b>Wm Byrne Elementary</b>	Krzewki, Catherine D	0.50

Staffing Detail by Budget Unit as of May 13, 2021

	Location Description	Full Name	FTE
<b>2nd Grade Tcr</b>	<b>Wm Byrne Elementary</b>	Mulder, Lindsey	1.00
		Tomala, Crystal M	1.00
<b>3rd GradeTcr</b>	<b>Edward Neill Elementary</b>	Bearth, Luke A	1.00
		Engdahl, Ann Mary	1.00
	<b>Gideon Pond Elementary</b>	Bartling, Meghan	1.00
		Traetow, Andrea	1.00
		Zucollo, Susan R	1.00
	<b>Harriet Bishop Elementary</b>	Anderson, Melissa	1.00
		Holden, Nichole L	1.00
		Jensen, Leta	1.00
	<b>Hidden Valley Elementary</b>	Andrews, Donna	1.00
		Dwire, Melinda	1.00
		Nelson, Kathryn L	1.00
	<b>Rahn Elementary</b>	Hartl, Aran J	1.00
		Hill, Gary S	1.00
	<b>Sky Oaks Elementary</b>	Jermeland, Meghan M	1.00
		Schneider, Marisa Lynn	1.00
		Stoltz, Lisa A	1.00
	<b>Virtual Academy - Elementary</b>	Cooper, Kirenza I	0.50
		Gravink, Ashley	0.50
	<b>Vista View Elementary</b>	Houtman, Jennifer L	1.00
		Ivory, Courteney	1.00
	<b>Wm Byrne Elementary</b>	Boche, Sonia R	1.00
		Hanson, Debra A	1.00
		Tompach, Tracy J	1.00
		Wurdeman, Deb Sue	0.50
<b>4th Grade Tcr</b>	<b>Edward Neill Elementary</b>	Condon, James F	1.00
		Hovland, Susan C	1.00
	<b>Gideon Pond Elementary</b>	King, Dan Austin	1.00
		Macnaughton, Laura	1.00
	<b>Harriet Bishop Elementary</b>	Coronis, Stacy S	1.00
		Jordan, Allison A	1.00
		Soruco, Maria R	1.00
		Warmka, Cheri R	0.50
	<b>Hidden Valley Elementary</b>	Batterman, Jessica M	1.00
		Lecompte, Emilie	1.00
	<b>Rahn Elementary</b>	Hill, Kari L	1.00
		Tofte, Alissa G	1.00
	<b>Sky Oaks Elementary</b>	Bryant, Melanie A	1.00
		Richards, Jesse	1.00
	<b>Virtual Academy - Elementary</b>	Davidson, Jessica J	0.50
		Nepsund, Cynthia J	0.50
	<b>Vista View Elementary</b>	Dempsey, Jodi Jean	1.00
		Kramer, Krista	1.00
	<b>Wm Byrne Elementary</b>	Bragg, Kaitlin J	1.00
		Hansmann, Patricia I	0.50
		Happe, Nicole	1.00
		Walgenbach, Rachel C	1.00
<b>5th Grade Tcr</b>	<b>Edward Neill Elementary</b>	Gilray, Rebecca J	1.00
		Zak, Gloria	1.00

Staffing Detail by Budget Unit as of May 13, 2021

	Location Description	Full Name	FTE
<b>5th Grade Tcr</b>	<b>Gideon Pond Elementary</b>	Rau, Jessica	1.00
		Robison, Thomas C	1.00
	<b>Harriet Bishop Elementary</b>	Schmidt-boyles, Dawn	1.00
		Wallenta, Paul S	1.00
		Warmka, Cheri R	0.50
	<b>Hidden Valley Elementary</b>	Peltier, Brad W	1.00
		Schwenn, Jeffrey A	1.00
	<b>Rahn Elementary</b>	Naef, Nathan A	1.00
		Slattery, Cara	1.00
	<b>Sky Oaks Elementary</b>	Berg, Matthew T	1.00
		Schilling, Pam A	1.00
		(blank)	0.50
	<b>Virtual Academy - Elementary</b>	Davidson, Jessica J	0.50
		Nepsund, Cynthia J	0.50
	<b>Vista View Elementary</b>	Orlenko, Corbin D	1.00
		West, Julie	1.00
	<b>Wm Byrne Elementary</b>	Gant, Sarah M	1.00
		Gierada, Barbara L	1.00
		Zupke, Samuel	1.00
<b>Kindergarten Tcr</b>	<b>Edward Neill Elementary</b>	Lippka, Jonalyn	1.00
		(blank)	1.00
	<b>Gideon Pond Elementary</b>	Anderson, Brittney	1.00
		Brace, Roxanna N	0.50
		Trekell, Terese	1.00
	<b>Harriet Bishop Elementary</b>	Berryman, Ashley A	1.00
		Harrold, Stacey L	1.00
		Meyer, Tanya L	1.00
		Pavek, Brooke C	1.00
	<b>Hidden Valley Elementary</b>	Finch, Christine M	1.00
		McCroskey, Shari	1.00
		Walby, Molly E	1.00
	<b>Rahn Elementary</b>	Elliott, Rachel R	1.00
		McCarthy, Jennifer	1.00
		Richardson, Sarah	1.00
	<b>Sky Oaks Elementary</b>	Nicholson, Marcia L	1.00
		Preston, Angela	1.00
		Ritchie, Jacki Rae	1.00
		Strahota, Sara J	1.00
	<b>Virtual Academy - Elementary</b>	Putman, Tanja	0.50
		Wilson, Elizabeth J	0.50
	<b>Vista View Elementary</b>	Rhinevault, Lynn	1.00
		Tucci, Amy J	1.00
	<b>Wm Byrne Elementary</b>	Calnon, Jennifer	1.00
		Lamont, Heidi O	1.00
		Meisner, Brionna	1.00
		Perez, Teresa G	1.00
		Ulrich, Julia	1.00
<b>Learning Specialist</b>	<b>District-wide</b>	(blank)	3.00
	<b>Edward Neill Elementary</b>	Wagner-smith, Sherry	1.00
	<b>Hidden Valley Elementary</b>	Grundstrom, Katie M	1.00

Staffing Detail by Budget Unit as of May 13, 2021

	Location Description	Full Name	FTE
<b>Learning Specialist</b>	<b>Hidden Valley Elementary</b>	Steinke, Abby	<b>1.00</b>
	<b>Vista View Elementary</b>	Loran, Kerianne N	<b>1.00</b>
<b>02010 - MS Core Instr Personnel</b>			
<b>6th Grade Tcr</b>	<b>Eagle Ridge MS</b>	Barton, Duane	<b>0.61</b>
		Bohr, Jennifer L	<b>0.61</b>
		Day, Marlys L	<b>0.17</b>
		Flynn, Catherine T	<b>0.61</b>
		Kraft, Stephen	<b>1.00</b>
		Lundahl, Timothy	<b>0.34</b>
		Mikelson, Teresa	<b>0.82</b>
		Mosey, Pat	<b>1.00</b>
	<b>Nicollet MS</b>	Cin, Stephanie P	<b>0.50</b>
		Coronis, Anthony L	<b>0.50</b>
		Glas, John M	<b>0.50</b>
		Khamratthanome, Bounthavy	<b>1.00</b>
		Kohner, Joseph E	<b>0.50</b>
		Nemetz, Scott	<b>1.00</b>
		Ring, Katlin	<b>0.50</b>
		Wening, Alesha	<b>0.50</b>
		Wickenhauser, Kiersten L	<b>1.00</b>
<b>Dean</b>	<b>Nicollet MS</b>	Robb, Emily C	<b>1.00</b>
<b>Lang Arts Tcr</b>	<b>Eagle Ridge MS</b>	Anderson, Kristen L	<b>0.61</b>
		Blair, Michael E.	<b>0.62</b>
		Elward, Lucius P	<b>0.62</b>
		Moran, Molly K	<b>1.00</b>
		Parkinson, Jacquelyn R	<b>0.61</b>
		(blank)	<b>1.00</b>
	<b>Nicollet MS</b>	Armajani, Jonathan C	<b>0.42</b>
		Hansen, William C	<b>0.50</b>
		Islam, Tasia	<b>0.51</b>
		Orth, Steven D.	<b>0.50</b>
		Salad, Hawa D	<b>0.50</b>
		Schmidt, Jennifer R	<b>1.00</b>
		Smolke, Angela S	<b>0.33</b>
		Sorensen, Brad	<b>0.50</b>
		(blank)	<b>0.50</b>
<b>Math Tcr</b>	<b>Eagle Ridge MS</b>	Czapar, Ryan J	<b>0.61</b>
		Drutowski, Alison	<b>0.61</b>
		Grueneich, Janelle	<b>0.61</b>
		Isaacson, Melissa J	<b>0.61</b>
		Nelson, Michelle L	<b>0.61</b>
	<b>Nicollet MS</b>	Amundson, Jane E	<b>0.60</b>
		Benson, Ross S	<b>0.50</b>
		Funches, Monique Roy	<b>0.50</b>
		Geddes, Richard W	<b>0.50</b>
		McNeil, Madeline P	<b>0.50</b>
		Notch, Samantha J	<b>0.50</b>
		Van Hoorn, Kirsten	<b>0.50</b>
<b>PLTW</b>	<b>Eagle Ridge MS</b>	Beckmann, Emily C	<b>1.00</b>

Staffing Detail by Budget Unit as of May 13, 2021

	Location Description	Full Name	FTE
<b>PLTW</b>	<b>Nicollet MS</b>	(blank)	<b>0.17</b>
<b>Science Tcr</b>	<b>Eagle Ridge MS</b>	Hammer, Jeffrey	<b>1.00</b>
		Lundahl, Timothy	<b>0.66</b>
		Meyer, Chad	<b>1.00</b>
	<b>Nicollet MS</b>	Challgren, Peg Ten	<b>1.00</b>
		Pettinelli, Stephen M	<b>1.00</b>
		Pieper, Jill	<b>1.00</b>
		(blank)	<b>0.16</b>
<b>Soc Stu Tcr</b>	<b>Eagle Ridge MS</b>	Klubberud, Michael	<b>1.00</b>
		Simmons, Sean D	<b>0.50</b>
		Yager, Amy	<b>0.34</b>
	<b>Nicollet MS</b>	Elfering, Jean	<b>1.00</b>
		Iverson, Adam	<b>1.00</b>
		Schweim, Robert W	<b>1.00</b>
		(blank)	<b>1.16</b>
<b>World Lang Tcr</b>	<b>Eagle Ridge MS</b>	Anderson, Janelle D	<b>0.34</b>
	<b>Nicollet MS</b>	Blazquez, Javier	<b>0.33</b>
<b>03010 - HS Core Instr Personnel</b>			
<b>BEA President</b>	<b>District-wide</b>	Wuensch, Wendy Drugge	<b>1.00</b>
<b>Dance Tcr</b>	<b>Burnsville HS</b>	Waller, Jennifer	<b>0.10</b>
<b>Lang Arts Tcr</b>	<b>Burnsville HS</b>	Burke, Katie J	<b>1.00</b>
		Burnham, Charles F	<b>1.00</b>
		Connell, Paul J	<b>0.60</b>
		Dyrhaug, Michelle	<b>1.00</b>
		Eggers, Sheana	<b>1.00</b>
		Foldenaur, Holly A	<b>1.00</b>
		Hansen, Marie C	<b>0.80</b>
		Millea, Allison B	<b>1.00</b>
		Ohama, Hayley C	<b>1.00</b>
		Rudolph, Roxanne J	<b>1.00</b>
		Staum, Anne C	<b>1.00</b>
		Waller, Jennifer	<b>0.70</b>
		Webber, Gloria M	<b>1.00</b>
<b>Math Tcr</b>	<b>Burnsville HS</b>	Banitt, Justin	<b>0.80</b>
		Christian, David	<b>1.00</b>
		Croatt, Charles C	<b>1.00</b>
		Delmont, Brooke	<b>1.00</b>
		Dippel, Jessica C	<b>1.00</b>
		Harrod, Kim N	<b>0.80</b>
		Kuziej, Janet L	<b>1.00</b>
		Meuser, Teresa	<b>1.00</b>
		Nelson, Amy	<b>1.00</b>
		Noss, Jean	<b>1.00</b>
		Quamme, David R	<b>1.00</b>
		Vogt, Kendra M	<b>0.80</b>
<b>Science Tcr</b>	<b>Burnsville HS</b>	Bane, Deanna S	<b>1.00</b>
		Blandin, Melissa	<b>1.00</b>
		Davidson, Elizabeth A	<b>0.80</b>
		Douglas, Lori	<b>1.00</b>

Staffing Detail by Budget Unit as of May 13, 2021

	Location Description	Full Name	FTE
Science Tcr	Burnsville HS	Hoeschen, Kerry	1.00
		Holt, Clayton B	1.00
		Huber, Jon Alan	1.00
		Huemoeller, Michael T	1.00
		Johnson, Cory Charles	0.80
		Morgan, William E	1.00
		Weightman, Elizabeth C	1.00
		(blank)	1.00
Soc Stu Tcr	Burnsville HS	Aars, Kristina	1.00
		Bousu, Mollie J	1.00
		Engelhardt, William T	1.00
		Eppen, Matthew W	1.00
		Graff, Jenn	1.00
		Jensen, Jennifer	1.00
		McDevitt, Paul David	1.00
		Miliovich, Chris M	1.00
		Moffitt, Leslie Allan	1.00
		Silberman, Kevin	1.00
		Simmons, Sean D	0.50
		Strand, Nate R	1.00
		VanSchoonhoven, Katherine	1.00
		Wendling, Kathryn	1.00
		(blank)	0.30
World Lang Tcr	Burnsville HS	Anderson, Janelle D	0.20
		Barry, Amber Leigh	0.80
		Blazquez, Javier	0.67
		Dundon, Mary Lou	1.00
		Holcombe, Sara J	0.67
		Lehner, Timothy	1.00
04010 - K12 PhyEd/Art/Math/Music			
Art Tcr	Burnsville HS	Braun, Catherine A	0.50
		Buckrey, Susan E	0.60
		Kegley, Robyn E	1.00
		Soley, Nicole D	1.00
	Eagle Ridge MS	Weilandgruber, Elizabeth	1.00
	Edward Neill Elementary	Irmiter, Micayla M	0.25
		Merkel, Sara A	0.25
		(blank)	0.50
	Gideon Pond Elementary	Schrivier, Mara C	0.75
	Harriet Bishop Elementary	Steding, Lindsay M	1.00
		(blank)	1.00
	Hidden Valley Elementary	Merkel, Sara A	0.75
	Nicollet MS	Buckrey, Susan E	0.08
		Wilson, Kacie L	1.00
	Rahn Elementary	(blank)	0.50
	Sky Oaks Elementary	Irmiter, Micayla M	0.75
	Virtual Academy - Elementary	Schrivier, Mara C	0.25
	Vista View Elementary	(blank)	0.50
	Wm Byrne Elementary	Vo, Kelly Rae	1.00



Staffing Detail by Budget Unit as of May 13, 2021

	Location Description	Full Name	FTE
<b>Band Tcr</b>	<b>Burnsville HS</b>	French, Keith J	1.00
		Holmes, Molly	1.00
	<b>Eagle Ridge MS</b>	Armstrong, Nicholas G	0.51
	<b>Nicollet MS</b>	Bakken, Ann	0.50
		Kosloski, Scott	0.43
<b>Music Tcr</b>	<b>Edward Neill Elementary</b>	Tranby, Bonnie K.	0.75
	<b>Gideon Pond Elementary</b>	Buck, Rebecca L	0.75
	<b>Harriet Bishop Elementary</b>	Geesman, Garrett D	1.00
	<b>Hidden Valley Elementary</b>	Wood, Kimberly R	0.75
	<b>Rahn Elementary</b>	Lucius, Rachel H	0.50
	<b>Sky Oaks Elementary</b>	Wagner, Kristen A	0.50
		Wood, Kimberly R	0.25
	<b>Virtual Academy - Elementary</b>	Buck, Rebecca L	0.25
	<b>Vista View Elementary</b>	Lucius, Rachel H	0.50
		Tranby, Bonnie K.	0.25
	<b>Wm Byrne Elementary</b>	Langsjoen, Sonja	1.00
<b>Phy Ed Tcr</b>	<b>Burnsville HS</b>	Johnson, Ronna E	0.20
		Reuss, Eric	0.80
		Riggs, Mark D	1.00
		Stachowski, Susan C	1.00
		Van Der Woude, Loralie	1.00
		Van Der Woude, Mark	1.00
		Brown, Christopher M	0.34
		Hermes, Shelley	1.00
		Holden, Matt J	0.34
		Pearson, Chad W	1.00
	<b>Edward Neill Elementary</b>	Moorlach, Brian	0.75
	<b>Gideon Pond Elementary</b>	Dungey, Nate	0.75
	<b>Harriet Bishop Elementary</b>	Loesch, Jake	1.00
	<b>Hidden Valley Elementary</b>	Shelden, Jon	0.75
	<b>Nicollet MS</b>	Brown, Christopher M	0.66
		Johnson, Ronna E	0.80
		Reuss, Eric	0.20
		Scholl, Mick G	1.00
	<b>Rahn Elementary</b>	Moorlach, Brian	0.25
		Shelden, Jon	0.25
		(blank)	0.50
	<b>Sky Oaks Elementary</b>	Ceola, Mike	0.75
	<b>Virtual Academy - Elementary</b>	Dungey, Nate	0.25
	<b>Vista View Elementary</b>	Ceola, Mike	0.25
		Fritz, Kimberly A	0.50
	<b>Wm Byrne Elementary</b>	Mckane, Michelle M	1.00
<b>Strings Tcr</b>	<b>Burnsville HS</b>	Kosloski, Scott	0.40
	<b>Eagle Ridge MS</b>	Armstrong, Nicholas G	0.49
		Kosloski, Scott	0.17
<b>Vocal Tcr</b>	<b>Burnsville HS</b>	Leyva, Ana M	0.20
		Schmeichel, Jaclyn C	0.80
	<b>Eagle Ridge MS</b>	Leyva, Ana M	0.66
	<b>Nicollet MS</b>	Bakken, Ann	0.50
		Schmeichel, Jaclyn C	0.20

Staffing Detail by Budget Unit as of May 13, 2021

	Location Description	Full Name	FTE
06000 - Medical Careers Personnel			
Health Care Tcr	Burnsville HS	Werner-Dempsey, Anne	1.00
06010 - FACS Instr Personnel			
Facs Tcr	Burnsville HS	Asfeld, Beth M	1.00
		Deutsch, Matt R	0.80
		Eichten, Heidi J	1.00
		Spies, Gabrielle	0.90
	Eagle Ridge MS	Borden, Paige M	1.00
	Nicollet MS	Holman, Sandra L	0.51
		Ruzichka, Laurie	1.00
06020 - Trade Instr Ed Personnel			
Ind Tech Tcr	Burnsville HS	Patrie, Orion D	1.00
		Tesmer, Russell	1.00
		Wolf, Nicholas	1.00
PLTW	Nicollet MS	Paetzold, Robert James	1.00
06030 - Career & Technical Personnel			
Work Exp Tcr	Burnsville Alternative HS	Bates, Daniel W	0.90
06040 - Business Ed Personnel			
Business Tcr	Burnsville HS	Carroll, Michele	1.00
		Drahos, Cynthia	1.00
		(blank)	1.30
06050 - Partnership Burnsville Pro			
Dir Strategic Partnerships	Diamondhead	Funston, Kathy L	1.00
07010 - K12 Media Serv Support			
EA Media Support	Edward Neill Elementary	Scheuneman, Kristen Joy	0.59
	Gideon Pond Elementary	Butorac, Melanie A	0.59
	Harriet Bishop Elementary	Becker, Sarah J	0.59
	Hidden Valley Elementary	Schatzlein, Rachel	0.59
	Rahn Elementary	Burrill, Sarah	0.59
	Sky Oaks Elementary	Berge, Kristy K	0.59
	Vista View Elementary	Cermak, Barbara L	0.59
	Wm Byrne Elementary	Engberg, Denise G	0.59
	Media Specialist	Burnsville HS	Oie, Roger
Eagle Ridge MS		Galland, John	1.00
Nicollet MS		Meyer, Nancy L	1.00
07020 - K12 Gifted Talented Support			
Advanced Learning	Edward Neill Elementary	Petrella, Sara M	0.50
	Harriet Bishop Elementary	Huber, Erin	0.50
	Hidden Valley Elementary	Huber, Erin	0.50
	Rahn Elementary	Petrella, Sara M	0.50
	Vista View Elementary	Podratz, Anne Marie	0.50
	Wm Byrne Elementary	Podratz, Anne Marie	0.50

Staffing Detail by Budget Unit as of May 13, 2021

	Location Description	Full Name	FTE
<b>07030 - K12 Guidance Serv Support</b>			
<b>College &amp; Career Specialist</b>	<b>Burnsville HS</b>	Sexton, Marcia	<b>1.00</b>
<b>Counselor</b>	<b>Burnsville HS</b>	Akerson, Rebecca D	<b>1.00</b>
		Harrison, Phillip Scott	<b>1.00</b>
		Henderson, Michelle A	<b>1.00</b>
		Markham, Angela L	<b>1.00</b>
		Marshall, Veronica Jean	<b>1.00</b>
		Soderholm, John	<b>1.00</b>
	<b>Eagle Ridge MS</b>	Haugo, Marin E	<b>1.00</b>
		Russell, Desha S	<b>1.00</b>
	<b>Nicollet MS</b>	Hemmah, Katy M	<b>1.00</b>
		Quinn, Katie M	<b>1.00</b>
<b>07040 - DEANS</b>			
<b>Dean</b>	<b>Burnsville HS</b>	Dunbar, Niaka T	<b>1.00</b>
		Meyer, Joseph	<b>1.00</b>
	<b>Eagle Ridge MS</b>	Brown, Sterling D	<b>1.00</b>
		Drugg, Matthew S	<b>1.00</b>
	<b>Nicollet MS</b>	Meyer, Ryan C	<b>1.00</b>
		(blank)	<b>1.00</b>
<b>07060 - ESL</b>			
<b>ESL Tcr</b>	<b>Burnsville Alternative HS</b>	Durand, Kim	<b>1.00</b>
	<b>Burnsville HS</b>	Friendt, Andrea Lynn	<b>1.00</b>
		Guither, Catherine	<b>1.00</b>
		Lorincz, Kristen L	<b>1.00</b>
		Moren, Kimberly J	<b>1.00</b>
		Moukrim, Mina	<b>1.00</b>
		Parent, Andrea J	<b>1.00</b>
		Persons, Melissa B	<b>1.00</b>
		Winterlin, Jeffrey	<b>1.00</b>
	<b>Eagle Ridge MS</b>	Blair, Frances M.	<b>1.00</b>
		Gregory, Amanda	<b>1.00</b>
		O'brien, Brianna	<b>1.00</b>
	<b>Edward Neill Elementary</b>	Daly, Julie	<b>1.00</b>
		Moran, Ryan W	<b>1.00</b>
		Musa-agboneni, Kari	<b>1.00</b>
	<b>Gideon Pond Elementary</b>	Beeninga, Jane	<b>1.00</b>
		King, Kristen	<b>1.00</b>
	<b>Harriet Bishop Elementary</b>	Bauman, Rachel A	<b>1.00</b>
		Blom, Anne E	<b>1.00</b>
		Kessler, Cecilia	<b>1.00</b>
		McKinney, Margo	<b>1.00</b>
	<b>Hidden Valley Elementary</b>	Cadwell, Ann M	<b>1.00</b>
		Cullison, Caroline E	<b>1.00</b>
		Michels, Christine	<b>1.00</b>
		Proctor, Beth	<b>1.00</b>
	<b>Nicollet MS</b>	Abdullahi, Sacdiyo J	<b>1.00</b>
		Barnes, Monet M	<b>1.00</b>

Staffing Detail by Budget Unit as of May 13, 2021

	Location Description	Full Name	FTE
ESL Tcr	Nicollet MS	Kermes, Katherine M	1.00
		Olson, Amy	1.00
		(blank)	1.00
	Rahn Elementary	Arias, Angela Joy	1.00
		Olson, Kimberly Lenora	1.00
	Sky Oaks Elementary	Jones, Noelle	1.00
		King, Hannah	1.00
		Riphenburg, Wendy A	1.00
	Vista View Elementary	Carlson, Lisa M	1.00
		Thompson, Saloua	1.00
		Zimmerman, Kara J	1.00
	Wm Byrne Elementary	Benson, Briana M	1.00
		Johnson, Ashley	1.00
		Limberg, Mindi L	1.00
09010 - Spec Ed Salaries/Bene			
Ace L3 Secretary	BES Transition Services	Tanberg, Teri L	1.00
	ECSE	Willenburg, Joanna	1.00
Ace L4 Admin Asst/Specialist	Diamondhead	Day, Julie	1.00
		Gries, Brenda J	1.00
Assistive Tech Tcr	District-wide	Nelson, Katie L	1.00
Behavior Analyst	District-wide	Czapar, Kelly N	0.90
		Ewert, Casey B	0.90
Cultural Liaison	ECSE	Hassan, Rahma	0.88
		Riveros, Anna-maria	1.00
Dape	District-wide	Holden, Matt J	0.66
		Opatz, Larry	1.00
Dir Special Ed	Diamondhead	White, Stephanie C	1.00
ECSE Tcr		ECSE	Albersheim-carter, Marcina
		Blomquist, Stephanie	1.00
		Blood, Kelsey Jo	1.00
		Bresina, Autumn R	1.00
		Clancy, Carissa	1.00
		Cloutier, Dana	0.60
		Ebenhoh, Teegan M	1.00
		Erbes, Sarah L	1.00
		Misfeldt, Eiley K	1.00
		Nelson, Katherine	1.00
		Nelson, Tara A	1.00
		Ness, Karen M	1.00
		Niemiec, Alicia	1.00
		Orlich-Sullivan, Megan	1.00
		Spaulding, Sheila J	1.00
		Thompson, Hye Jeong	1.00
		Yost, Molly M	1.00
		(blank)	2.00
Learning Specialist	Edward Neill Elementary	Kugler, Julie	1.00
	Gideon Pond Elementary	Mirs, Laurel	1.00
	Harriet Bishop Elementary	Campen, Kim A.	0.50
		Morlock, Katie R	1.00

Staffing Detail by Budget Unit as of May 13, 2021

	Location Description	Full Name	FTE	
Learning Specialist	Hidden Valley Elementary	Collins, Leanne	1.00	
		Nurmela, Crystal	0.50	
	Rahn Elementary	(blank)	0.25	
	Sky Oaks Elementary	Lindell, Michelle M	0.50	
		Ruhland, Maria	1.00	
	Vista View Elementary	Crawford, Cynthia Y	1.00	
	Wm Byrne Elementary	Hanson, Lisa	1.00	
Nurse - LPN	ECSE	Wolke, Sara C	0.60	
	Edward Neill Elementary	Wittenkeller, Jane E	0.20	
	Nurse - LSN	Burnsville HS	Beaulieu, Kourtney A	0.48
District-wide		Bien, Bernadette L	0.40	
Eagle Ridge MS		Eilertson, Jane Ann	0.15	
Edward Neill Elementary		Nagy, Jo Ann	0.09	
Gideon Pond Elementary		Cozad, Patricia M	0.06	
Harriet Bishop Elementary		Omodt, Steven M	0.17	
Rahn Elementary		Stinson, Katrina L	0.01	
Sky Oaks Elementary		Cozad, Patricia M	0.14	
Vista View Elementary		Nagy, Jo Ann	0.14	
Wm Byrne Elementary		Hise, Bradley A	0.14	
		Stinson, Katrina L	0.75	
Nurse - RN		Burnsville HS	Robison, Kim A	0.06
		Hidden Valley Elementary	Exley, Amanda	0.18
			Scoville, Jennifer	0.16
Occ Therapist	Wm Byrne Elementary	Scoville, Jennifer	0.03	
	District-wide	Cesaro-Moxley, Rachel L	0.50	
		Kolstad, Michele M	1.00	
		Navarro, Rachel	1.00	
		Roeske, Melissa L	1.00	
	ECSE	Erickson, Kayla M	1.00	
		Robole, Vicki M	1.00	
	Physical Therapist	District-wide	Lian, Jocelyn M	1.00
	Psychologist	BES Transition Services	Nierengarten, Brianna L	0.10
		Burnsville Alternative HS	Gunderson, Mary Jane N	0.10
Burnsville HS		Gunderson, Mary Jane N	0.90	
		Nierengarten, Brianna L	0.90	
Eagle Ridge MS		Alvey, Heather	1.00	
		Kral, Melissa M	0.50	
ECSE		Kennedy, Jennifer K	0.60	
		Petersen, Holly M	0.80	
Edward Neill Elementary		Otto, Caron	0.50	
Gideon Pond Elementary		Otto, Caron	0.50	
Harriet Bishop Elementary		Lautigar-beutz, Julie	0.50	
Hidden Valley Elementary		Komar, Karen K	0.50	
Nicollet MS		Kral, Melissa M	0.50	
		Krylova, Anna V	1.00	
Rahn Elementary		Lautigar-beutz, Julie	0.50	
Sky Oaks Elementary		(blank)	0.50	
Vista View Elementary		Roehl, Peter A	0.50	
Wm Byrne Elementary		Roehl, Peter A	0.50	
Social Worker		Burnsville HS	Hewett, Thomas	0.35

Staffing Detail by Budget Unit as of May 13, 2021

	Location Description	Full Name	FTE
<b>Social Worker</b>	<b>Burnsville HS</b>	Morrissey, Michelle M	<b>0.35</b>
	<b>Eagle Ridge MS</b>	Poliquin, Anne E	<b>0.35</b>
	<b>ECSE</b>	Reichert, Kristen K	<b>1.00</b>
	<b>Edward Neill Elementary</b>	Chesla, Patrick J	<b>0.35</b>
	<b>Gideon Pond Elementary</b>	Khalif, Abdullahi M	<b>0.35</b>
	<b>Harriet Bishop Elementary</b>	Koch, Rebecca M	<b>0.35</b>
	<b>Hidden Valley Elementary</b>	Gauer-Kloos, Megan	<b>0.35</b>
	<b>Nicollet MS</b>	Mains, Kristin E	<b>0.35</b>
		(blank)	<b>0.35</b>
	<b>Rahn Elementary</b>	Keller, Katie	<b>0.35</b>
	<b>Sky Oaks Elementary</b>	Bruns, Brittany G	<b>0.35</b>
	<b>Vista View Elementary</b>	Lemke, Emily A	<b>0.35</b>
	<b>Wm Byrne Elementary</b>	McDowell, Morgan	<b>0.35</b>
	<b>BES Transition Services</b>	Anderson, Cheryl L	<b>0.88</b>
<b>Sped Ea</b>		Engstrom, Heather L	<b>0.88</b>
		Finch, Jeanne	<b>0.88</b>
		Frank, Sharon M	<b>0.88</b>
		Goodling, Beverly	<b>0.88</b>
		Payne, Barbara	<b>0.88</b>
		Tousignant, Kare-kathleen K	<b>0.88</b>
	<b>Burnsville HS</b>	Aamodt, April D	<b>0.88</b>
		Abdilahi, Hayat A	<b>0.88</b>
		Ahmed, Amina	<b>0.88</b>
		Andreasen, Arnold	<b>0.88</b>
		Bocklund, Timothy	<b>0.88</b>
		Chroust, Vicki	<b>0.88</b>
		Dixon, Dave T	<b>0.88</b>
		Garvis, Angela N	<b>0.88</b>
		Gibbs Holtan, Helen	<b>0.88</b>
		Greiner, Jodell	<b>0.88</b>
		Kaytor, Linda K	<b>0.88</b>
		Kinsella, Joe	<b>0.88</b>
		Kolumbus, Ryan C	<b>0.88</b>
		Larson, Janet Anne	<b>0.88</b>
		Lorig, Diane	<b>0.88</b>
		Martinson, Joni	<b>0.88</b>
		Nelson, Mark W	<b>0.88</b>
		Nowlan, Travis M	<b>0.88</b>
		Ray, Stephen	<b>0.88</b>
		Robles, Michelle R	<b>0.88</b>
		Smidt, Holly B	<b>0.88</b>
		White, Ruthann	<b>0.88</b>
		Wolff, Denise	<b>0.88</b>
		(blank)	<b>0.88</b>
	<b>Eagle Ridge MS</b>	Ashley, James M	<b>0.94</b>
		Bringgold, Debbie	<b>0.94</b>
		Gillis, Cindy M	<b>0.94</b>
		Hey, Linda L	<b>0.94</b>
		Mccray, Sharon	<b>0.94</b>
		Murray, Cathleen H	<b>0.94</b>

Staffing Detail by Budget Unit as of May 13, 2021

	Location Description	Full Name	FTE
Sped Ea	Eagle Ridge MS	Ruiz, Winston V	0.94
		Schwarz, Darcie N	0.94
		Zeimet, Karlie	0.94
		(blank)	0.94
	ECSE	Artiga-rosa, Patricia	0.81
		Bachmeier, Michelle M	0.81
		Depies, Kimberly	0.81
		Johnson, Karen A	0.81
		Kantor, Nancy M	0.81
		Keirstead, Amy	0.91
		Painter, Terri Lynn	0.81
		Rupp, Kalene J	0.81
		Schroeder, Gina M	0.81
		Smith, Brittney	0.81
		Walterson, Kristen A	0.81
		(blank)	0.81
	Edward Neill Elementary	Abdallah, Hibo Saad	0.91
		Blom, Elise M	0.91
		Hassan, Hafsa H	0.91
		Heger, Elizabeth A	0.91
		Herman, Linda R	0.91
		Kuhlman, Susan M	0.91
		Pofahl, Janell C	0.91
		Rockett, Joan	0.91
	Gideon Pond Elementary	Dahir, Hamdi A	0.91
		Hendrickson, Lisa	0.91
		Terfehr, Diane C	0.91
		Theis, Rachael L	0.91
		Weatherford, Andrea M	0.91
	Harriet Bishop Elementary	Wilson, Danelle P	0.91
		Adamson, Kimberly S	0.91
		Carney, Catherine	0.91
		Chhen, Kuoy L	0.91
		Hickerson, Karen A	0.91
		Jones, Rebecca E	0.91
		Mathews, Heather L	0.91
		Mcguire, Rebecca L	0.91
		Meyman, Whitney	0.91
		Spott, Anne B	0.91
		Twardoski, Ruthann	0.91
		Weber, Robert D	0.91
	Hidden Valley Elementary	Datres, Susan	0.91
		Davila, Ruth E	0.91
		Jones, Jean	0.91
		Kibler, Lauren	0.91
		Kienitz, Darlys	0.91
		Peterson, Kim L	0.91
		Sanz, Margaret M	0.91
		Simmons, Margaret B	0.91
		Ulrich, Kimberly A	0.91

Staffing Detail by Budget Unit as of May 13, 2021

	Location Description	Full Name	FTE
Sped Ea	Hidden Valley Elementary	(blank)	1.81
		Nicollet MS	
		Awill, Nasir M	0.75
		Barr, Sarah B	0.94
		Felton, Michelle M.	0.94
		Gysland, Neal	0.94
		Hoffman, Eric E	0.94
		Hoffman, Jada L	0.94
		Kaufman, Margaret M	0.94
		Miskiewicz, Kelly A	0.91
		Needham, Diane M	0.94
		Neptuno-temozan, Julio	0.94
		Olson, Pamela S	0.94
		Payne, Debra K	0.94
		Queen, LeVar A	0.94
		Reeves, Jonathan K	0.94
		Soucek, Mary L	0.94
		Thompson, Robert L	0.94
	Rahn Elementary	Busing, Marlene L	0.94
		Droege, Sheryl L	0.91
		Leake, Roxanne	1.00
		McCabe, Rory B	0.91
		Raichert, Sarah	0.91
		Reuter, Lisa L	0.91
		Sarhan, Sabah	0.91
		Wegner, Lisa L	0.91
		(blank)	0.91
	Sky Oaks Elementary	Boldt, Julie A	0.91
		Ford, Yannick J	0.91
		Hassan, Hamza A	0.91
		Jungers, Gail	0.81
		Kegley, Renee C	0.91
		King, Samantha F	0.91
		Mohamud, Fauzia T	0.91
		Ruiz, Jessica	0.91
		Santos, Laura	0.91
		Schiller, Lori L	0.91
		Spaulding, Kristie	0.91
	Vista View Elementary	Auge, Elizabeth	0.91
		Boekhoff, Melissa M.	1.00
		Brown, Ruth	0.91
		Hall, Jennifer J	0.91
		Kuskayeva, Irina V	0.91
		Latourelle, Sandra E	0.91
		Meitrodt, Kathleen M	0.91
		Ringger, Tracy A	0.91
		Roark, Kari L	0.91
	Wm Byrne Elementary	Adam, Sile Y	0.91
		Freeman, Tammy S	0.91
		Godfrey, Cintra L	0.91
		Ho, Linda S	0.91



Staffing Detail by Budget Unit as of May 13, 2021

	Location Description	Full Name	FTE
<b>Sped Ea</b>	<b>Wm Byrne Elementary</b>	Klofstad, Bryana M	0.91
		Koechlein, Laurie Leeanne	0.91
		Melara, Jasmin A	0.91
		Mohamed, Malika J	0.91
		O'donnell, Joseph J	0.91
		Simpson, Dawn	0.91
		Theyson, Brenda	0.91
		(blank)	0.91
<b>Sped Supervisor</b>	<b>Diamondhead</b>	Middendorf, Jennifer L	1.00
		Piotrowski, Amy	1.00
		Smith, Jackie J	1.00
		Thompson, Dana K	1.00
<b>Sped Tcr</b>	<b>BES Transition Services</b>	Anderson, Kasey D	1.00
		Chrissis, Erik R	1.00
		Schmidtke, Angila R	1.00
	<b>Burnsville Alternative HS Burnsville HS</b>	Morris, Angela J	1.00
		Bunkers, Kathleen K	1.00
		Cox, Kelly J	1.00
		Eiler, Elizabeth P	1.00
		Gonnella, Mark P	1.00
		Grant, Cara	1.00
		Hood, Julia S	1.00
		Jenquin, Marielle R	1.00
		Kappel, Genevieve N	1.00
		Kibler, Christian D	1.00
		Knox, Jacob M	1.00
		McCool, Molly	1.00
		Moulsoff, Norine L	0.40
		Nelson, Emily A	1.00
		Neuer, Michelle E	1.00
		Palmer, Christopher B	1.00
		Roark, Kim J	1.00
		Seamen, Michelle A	1.00
		Serig, Bridget P	1.00
		Smith, Ashley	1.00
		Tousignant, Annette S	1.00
		Walker, Ryan M	1.00
		Webber, Jeffrey	1.00
		Workman, Carolyn J	1.00
		(blank)	3.00
	<b>Eagle Ridge MS</b>	Byrne, Edward	1.00
		Chouanard, Mary E	1.00
		Fairchild, Lindsey	1.00
		Hermansen, Laura J	1.00
		Miller, Jill Elizabeth	0.50
		Nash, Derek B	1.00
		Pope, Kristina	1.00
		Pope, Robert J	1.00
	<b>Edward Neill Elementary</b>	Williams, Elizabeth	1.00
		Bing, Dena M	1.00

Staffing Detail by Budget Unit as of May 13, 2021

	Location Description	Full Name	FTE
Sped Tcr	Edward Neill Elementary	Discher, Tracy L	1.00
		Okerstrom, Michelle K	1.00
		Sullivan, Jodi L	0.50
	Gideon Pond Elementary	Fechner, Susan	0.50
		Lynch, Molly	1.00
		Tucker, Emily A	1.00
		Tushie, Patricia	1.00
	Harriet Bishop Elementary	Classen, Jodie L	1.00
		Hassler, Hannah E	1.00
		Hill, Madeline E	1.00
		Logan, Kari M	0.50
		Pred, Renee R	1.00
	Hidden Valley Elementary	Biagi, Louis	1.00
		Miller, Erin M	1.00
		Pettes, Julie A	1.00
		Richter, Lindsay M	1.00
		Sullivan, Jodi L	0.50
		Umhoefer, Taylor M	1.00
	Nicollet MS	Bell, Angela	1.00
		Blons, Liane M	1.00
		Ferguson, Antanaya S	1.00
		Fredricks, Joel J	1.00
		Geditz, Randall J	1.00
		McCue, Michelle	1.00
		Rappe, Brian	1.00
		Scheit, Andrea	1.00
		Schroeder, Jean M	1.00
		Tetzloff, Mitzi R	1.00
		Tillman, Megan	1.00
	Rahn Elementary	Branch, Nancy C	1.00
		Fechner, Susan	0.50
		Lauer, Lisa N	1.00
		Zwicke, Kayla M	1.00
	Sky Oaks Elementary	Crespin, Jason C	1.00
		Hansen, Amy	1.00
		Hanson, Amy E	1.00
		Logan, Kari M	0.50
		Mohamoud, Farhan A	1.00
		Tangney, Amy K	1.00
		(blank)	1.00
	St. John's	Brandon, Debra	0.40
	Vista View Elementary	Peterson, Julie A	1.00
		Santele, Layne A	1.00
		Trisko, Mary	1.00
		Woods, Megan M	1.00
		Zondag-Hamer, Kimberly	0.50
	Wm Byrne Elementary	Bugenhagen, Erica A	1.00
		Heller, Mary R	1.00
		Henrich, Sarah L	1.00
		Smith, Jennifer S	1.00

Staffing Detail by Budget Unit as of May 13, 2021

	Location Description	Full Name	FTE
<b>Sped Tcr</b>	<b>Wm Byrne Elementary</b>	Stegbauer, Amethyst R	<b>1.00</b>
		Zondag-Hamer, Kimberly	<b>0.50</b>
<b>Speech Tcr</b>	<b>Burnsville HS</b>	Barnes, Cherise C	<b>1.00</b>
	<b>Eagle Ridge MS</b>	Oscarson, Kristi R	<b>1.00</b>
	<b>ECSE</b>	Barth, Tami Rae	<b>1.00</b>
		Jordan, Joanna	<b>1.00</b>
		Neal, Bryeny B	<b>1.00</b>
		Niesen, Elizabeth A	<b>1.00</b>
		Vodnick, Sarah A	<b>1.00</b>
		Woodcock, Sue M	<b>0.80</b>
	<b>Edward Neill Elementary</b>	Jamison, Darcie L	<b>1.00</b>
	<b>Gideon Pond Elementary</b>	Hjermstad, Heather	<b>1.00</b>
	<b>Harriet Bishop Elementary</b>	Meulebroeck, Susanne	<b>1.00</b>
	<b>Hidden Valley Elementary</b>	Spoden, Annemarie	<b>1.00</b>
	<b>Nicollet MS</b>	Brinkman, Carole I	<b>0.50</b>
		Schlichting, Catherine	<b>0.50</b>
	<b>Rahn Elementary</b>	Klinnert, Elizabeth	<b>1.00</b>
	<b>Sky Oaks Elementary</b>	Faust, Danielle M	<b>1.00</b>
	<b>Vista View Elementary</b>	Goldsmith, Emily R	<b>1.00</b>
	<b>Wm Byrne Elementary</b>	Kibler, Jeanne	<b>1.00</b>
<b>Work Exp Tcr</b>	<b>BES Transition Services</b>	Erickson, Shelly L	<b>1.00</b>
	<b>Burnsville HS</b>	Levinski, Sarah A	<b>1.00</b>
<b>10010 - ALC/At Risk Programming</b>			
<b>6th Grade Tcr</b>	<b>Eagle Ridge MS</b>	Barton, Duane	<b>0.39</b>
		Bohr, Jennifer L	<b>0.39</b>
		Day, Marlys L	<b>0.17</b>
		Flynn, Catherine T	<b>0.39</b>
	<b>Nicollet MS</b>	Cin, Stephanie P	<b>0.50</b>
		Coronis, Anthony L	<b>0.50</b>
		Glas, John M	<b>0.50</b>
		Kohner, Joseph E	<b>0.50</b>
		Peterson, Christine K	<b>0.50</b>
		Ring, Katlin	<b>0.50</b>
		Wening, Alesha	<b>0.50</b>
<b>Ace L3 Secretary</b>	<b>Burnsville Alternative HS</b>	Ho-Buttleman, Staci	<b>1.00</b>
<b>Ace L4 Admin Asst/Specialist</b>	<b>Diamondhead</b>	Odowa, Huda Y	<b>1.00</b>
<b>Art Tcr</b>	<b>Burnsville Alternative HS</b>	Braun, Catherine A	<b>0.50</b>
<b>CE Coordinator 3</b>	<b>Hidden Valley Elementary</b>	Dudley, Martha Viczian	<b>0.20</b>
	<b>Sky Oaks Elementary</b>	Konopa, Stacey	<b>0.20</b>
	<b>Wm Byrne Elementary</b>	Kristjanson, Jeanine	<b>0.20</b>
<b>CE Coordinator I</b>	<b>Rahn Elementary</b>	Berge, Sara K	<b>0.18</b>
<b>Community Connections Coord</b>	<b>Diamondhead</b>	(blank)	<b>1.00</b>
<b>Counselor</b>	<b>Burnsville Alternative HS</b>	Hendricks, Scheress	<b>0.50</b>
		Maidment, Lori	<b>0.20</b>
<b>EA Level 3</b>	<b>Burnsville Alternative HS</b>	(blank)	<b>0.88</b>
<b>Interventionist</b>	<b>Burnsville Alternative HS</b>	Maidment, Lori	<b>0.80</b>
<b>Lang Arts Tcr</b>	<b>Burnsville Alternative HS</b>	Bergman, Anna T	<b>0.50</b>
		Meilleur, Stephanie J	<b>1.00</b>
		Sloneker, Angela	<b>1.00</b>

Staffing Detail by Budget Unit as of May 13, 2021

	Location Description	Full Name	FTE	
Lang Arts Tcr	Eagle Ridge MS	Anderson, Kristen L	0.39	
		Blair, Michael E.	0.38	
		Elward, Lucius P	0.38	
		Parkinson, Jacquelyn R	0.39	
	Nicollet MS	Armajani, Jonathan C	0.42	
		Hansen, William C	0.50	
		Orth, Steven D.	0.50	
		Salad, Hawa D	0.50	
		Sorensen, Brad	0.50	
		(blank)	0.50	
Math Tcr	Burnsville Alternative HS	Lotze, Timothy	1.00	
		Mueller, Sarah K	1.00	
	Eagle Ridge MS	Czapar, Ryan J	0.39	
		Drutowski, Alison	0.39	
		Grueneich, Janelle	0.39	
		Isaacson, Melissa J	0.39	
		Nelson, Michelle L	0.39	
		(blank)	0.39	
	Nicollet MS	Benson, Ross S	0.50	
		Funches, Monique Roy	0.50	
		Geddes, Richard W	0.50	
		McNeil, Madeline P	0.50	
		Notch, Samantha J	0.50	
		Van Hoorn, Kirsten	0.50	
Phy Ed Tcr	Burnsville Alternative HS	Morrissey, Kevin P	1.00	
Principal	Burnsville Alternative HS	Ronn, Kelly J	1.00	
Science Tcr	Burnsville Alternative HS	Engelhardt, Angela C	0.75	
		Soderholm, William Eric	1.00	
Soc Stu Tcr	Burnsville Alternative HS	Bates, Daniel W	0.10	
		Bergman, Anna T	0.50	
		Hill, Amy	0.90	
		Kirchner, Amy	1.00	
10030 - K-12 Nursing Hlth Serv				
EA Health	Gideon Pond Elementary	Stene, Barbara	0.91	
	Harriet Bishop Elementary	Hansen, Sarah J	0.91	
	Rahn Elementary	Gaddy, Keshia	0.91	
	Sky Oaks Elementary	Luth, Donita	0.40	
	Vista View Elementary	Luth, Donita	0.60	
Nurse - LSN	Burnsville HS	Beaulieu, Kourtney A	0.52	
	District-wide	Bien, Bernadette L	0.60	
	Eagle Ridge MS	Eilertson, Jane Ann	0.85	
	Gideon Pond Elementary	Cozad, Patricia M	0.34	
	Harriet Bishop Elementary	Omodt, Steven M	0.83	
	Rahn Elementary	Stinson, Katrina L	0.19	
	Sky Oaks Elementary	Cozad, Patricia M	0.46	
	Vista View Elementary	Nagy, Jo Ann	0.46	
	Wm Byrne Elementary	Hise, Bradley A	0.46	
		Stinson, Katrina L	0.05	
	Nurse - RN	Burnsville HS	Robison, Kim A	0.94
		Hidden Valley Elementary	Exley, Amanda	0.82

Staffing Detail by Budget Unit as of May 13, 2021

	Location Description	Full Name	FTE
Nurse - RN	Hidden Valley Elementary	Scoville, Jennifer	0.64
11020 - 9-12 Athletics			
Ace L4 Admin Asst/Specialist	Burnsville HS	Riggs, Jeanine L	1.00
Dir Activities	Burnsville HS	Paek, Guillaume J	1.00
12010 - F401 Fed Title I			
1st Grade Tcr	Hidden Valley Elementary	Davis, Mikayla G	1.00
2nd Grade Tcr	Rahn Elementary	Mathys, Sandra	1.00
5th Grade Tcr	Harriet Bishop Elementary	Schwalbe, Heather	0.50
Ace L3 Secretary	Diamondhead	De Leon, Angel M	1.00
EA Level 3	Edward Neill Elementary	Hernandez, Olga C	0.94
	Gideon Pond Elementary	Abdi, Rahima A	0.50
		Nur, Ifrah H	0.50
	Wm Byrne Elementary	(blank)	0.94
	Kindergarten Tcr	Edward Neill Elementary	Schwingle, Cassie L
	Gideon Pond Elementary	Brace, Roxanna N	0.50
	Hidden Valley Elementary	Taack, Gina	1.00
	Vista View Elementary	Downey, Samantha R	1.00
Learning Specialist	Rahn Elementary	(blank)	0.75
	Sky Oaks Elementary	Cunnien, Laurie A	1.00
		Lindell, Michelle M	0.50
	Wm Byrne Elementary	Hansmann, Patricia I	0.50
		Knutson, Christine	1.00
Sisa Coordinator	Diamondhead	Van Osdel, Bethany A	0.49
		(blank)	0.80
Title 1 Tcr	St. John's	Pfeiffer, Donna M	0.40
12020 - F414 Fed Title II Part A			
Avid Coordinator	Burnsville HS	Christy, Danielle H	0.20
ESL Coordinator	Diamondhead	Kreie Arago, Maria	0.25
Lang Arts Tcr	Burnsville HS	Connell, Paul J	0.20
Sisa Coordinator	Diamondhead	Becquer, Frances	1.00
		Van Osdel, Bethany A	0.49
12030 - F417 Fed Title III			
Ace L4 Admin Asst/Specialist	Diamondhead	Naas, Anne B	0.50
ESL Coordinator	Diamondhead	Kreie Arago, Maria	0.75
12040 - F433 Fed Title IV-A			
Behavior Analyst	District-wide	Czapar, Kelly N	0.10
		Ewert, Casey B	0.10
Lang Arts Tcr	Burnsville HS	Connell, Paul J	0.20
Sisa Coordinator	Diamondhead	(blank)	0.20
13010 - F335 Pro Pay (QComp)			
Continuous Improvement Coach	District-wide	Coleman, Colleen M	1.00
		Hagen, Aimee E	1.00
		Nemeth, Heather	1.00
		Ness, Katie L	1.00

Staffing Detail by Budget Unit as of May 13, 2021

	Location Description	Full Name	FTE
Continuous Improvement Coach	District-wide	Niffenegger, Kamala N	1.00
		Pranschke, Stephanie T	1.00
<b>13020 - Integration Program</b>			
Advanced Learning	Gideon Pond Elementary	Stalock, Sharron C	0.50
	Sky Oaks Elementary	Stalock, Sharron C	0.50
Avid Coordinator	Burnsville Alternative HS	Hill, Amy	0.10
	Burnsville HS	Christy, Danielle H	0.30
	Eagle Ridge MS	Thomas, Jessica	0.20
	Nicollet MS	Smalley, Amy C	0.20
Avid Tcr	Eagle Ridge MS	Thomas, Jessica	0.80
	Nicollet MS	Smalley, Amy C	0.80
Cultural Liaison	District-wide	Abdullahi, Sahro	1.00
		Abdulrazak, Zeynah O	1.00
		Ali, Maryan H	1.00
		Amegbleame, Coudjo	1.00
		Bauer, Andrea C	1.00
		Grant, Heidi A	1.00
		Kaahiye, Axmad	1.00
		Lopez, Mary T	1.00
		Omar, Abdulahi	1.00
		Quintana Nunez, Mariana	1.00
		Torres, Hector R	1.00
Dir Curriculum & Instruction	Diamondhead	Oftedahl, Imina P	0.51
Social Worker	Burnsville HS	Hewett, Thomas	0.65
		Morrissey, Michelle M	0.65
	Eagle Ridge MS	Poliquin, Anne E	0.65
	Edward Neill Elementary	Chesla, Patrick J	0.65
	Gideon Pond Elementary	Khalif, Abdullahi M	0.65
	Harriet Bishop Elementary	Koch, Rebecca M	0.65
	Hidden Valley Elementary	Gauer-Kloos, Megan	0.65
	Nicollet MS	Mains, Kristin E	0.65
		(blank)	0.65
	Rahn Elementary	Keller, Katie	0.65
	Sky Oaks Elementary	Bruns, Brittany G	0.65
	Vista View Elementary	Lemke, Emily A	0.65
	Wm Byrne Elementary	McDowell, Morgan	0.65
Specialist of American Indian	District-wide	Mousseau, Rebecca J	1.00
<b>13030 - Compensatory Ed</b>			
2nd Grade Tcr	Wm Byrne Elementary	Krzewki, Catherine D	0.50
3rd GradeTcr	Wm Byrne Elementary	Wurdeman, Deb Sue	0.50
4th Grade Tcr	Gideon Pond Elementary	Gallus, Jeffrey	1.00
5th Grade Tcr	Harriet Bishop Elementary	Schwalbe, Heather	0.50
6th Grade Tcr	Eagle Ridge MS	Mikelson, Teresa	0.18
	Nicollet MS	Peterson, Christine K	0.50
Avid Tcr	Burnsville HS	Christy, Danielle H	0.50
		Davidson, Elizabeth A	0.20
		Deutsch, Matt R	0.20
		Hansen, Marie C	0.20

Staffing Detail by Budget Unit as of May 13, 2021

	Location Description	Full Name	FTE
<b>Avid Tcr</b>	<b>Burnsville HS</b>	Johnson, Cory Charles	0.20
		Moulsoff, Norine L	0.20
		Waller, Jennifer	0.20
		(blank)	0.20
<b>Continuous Improvement Coach</b>	<b>District-wide</b>	Reid, Lisa M	1.00
		Skoglund, Allison L	1.00
<b>EA Level 3</b>	<b>Edward Neill Elementary</b>	Kruger, Tara N	0.94
	<b>Gideon Pond Elementary</b>	Barsug, Hudayfi M	0.94
	<b>Harriet Bishop Elementary</b>	Oshiro, Karen M	0.94
	<b>Hidden Valley Elementary</b>	Voris, Quincy B	0.94
	<b>Nicollet MS</b>	Omar, Rahmo B	0.88
	<b>Rahn Elementary</b>	Gutierrez Beltran, Maria L	0.94
	<b>Sky Oaks Elementary</b>	Abtow, Anab A	0.94
	<b>Vista View Elementary</b>	Tillman, Jack R	0.94
	<b>Wm Byrne Elementary</b>	Handahl, Briann A	0.94
<b>Interventionist</b>	<b>Burnsville HS</b>	Moulsoff, Norine L	0.20
	<b>Eagle Ridge MS</b>	Day, Marlys L	0.66
	<b>Nicollet MS</b>	Holcombe, Sara J	0.33
<b>Lang Arts Tcr</b>	<b>Nicollet MS</b>	Smolke, Angela S	0.67
<b>Learning Specialist</b>	<b>Edward Neill Elementary</b>	Herkenhoff, Patty Ann	1.00
	<b>Harriet Bishop Elementary</b>	Campen, Kim A.	0.50
	<b>Hidden Valley Elementary</b>	Nurmela, Crystal	0.50
	<b>Rahn Elementary</b>	Peterson, Keri	1.00
	<b>Sky Oaks Elementary</b>	Harves, Nicole R	0.50
	<b>Vista View Elementary</b>	Dennis, Teresa L	1.00
<b>Math Tcr</b>	<b>Burnsville HS</b>	Banitt, Justin	0.20
		Harrod, Kim N	0.20
		Vogt, Kendra M	0.20
<b>Psychologist</b>	<b>Hidden Valley Elementary</b>	Komar, Karen K	0.50
	<b>Sky Oaks Elementary</b>	(blank)	0.50
<b>Soc Stu Tcr</b>	<b>Eagle Ridge MS</b>	Yager, Amy	0.66
<b>14010 - Tech General</b>			
<b>Digital Learning Specialist</b>	<b>Edward Neill Elementary</b>	Anderson, Bjorn Rs	0.75
	<b>Gideon Pond Elementary</b>	Knudsen, Julie A	0.75
	<b>Harriet Bishop Elementary</b>	Risteau, Joseph S	1.00
	<b>Hidden Valley Elementary</b>	Anderson, Bjorn Rs	0.25
		Christen, Lisa K.	0.25
		(blank)	0.25
	<b>Rahn Elementary</b>	(blank)	0.50
	<b>Sky Oaks Elementary</b>	Christen, Lisa K.	0.75
	<b>Virtual Academy - Elementary</b>	Knudsen, Julie A	0.25
	<b>Vista View Elementary</b>	(blank)	0.75
	<b>Wm Byrne Elementary</b>	Abrahamson, Jonathan	1.00
<b>14020 - Tech Capital Projects</b>			
<b>Digital Learning Specialist</b>	<b>District-wide</b>	Salmela, Kathryn	1.00
<b>Dir Technology</b>	<b>Diamondhead</b>	Gorton, Rachel	1.00
<b>Tech Spec 1</b>	<b>Diamondhead</b>	Abdiwahab, Mohamed S	1.00
		Meyer, Jessica M	1.00

Staffing Detail by Budget Unit as of May 13, 2021

	Location Description	Full Name	FTE
Tech Spec 1	Diamondhead	Stalock, Andrew R	1.00
Tech Spec 2	Diamondhead	Lund, Elliott J	1.00
		Rethlake-homolka, Pam	1.00
		Thomas, John S	1.00
Tech Spec 3	Diamondhead	Kopp, Elizabeth A	1.00
		Lund, Tim J	1.00
Tech Spec 4	Diamondhead	Weiler, Bob M	1.00
		Wolke, Drew D	1.00
<b>15010 - Prog Development</b>			
Ace L4 Admin Asst/Specialist	Diamondhead	Naas, Anne B	0.50
<b>15020 - Curriculum</b>			
Dir Curriculum & Instruction	Diamondhead	Oftedahl, Imina P	0.49
TOSA	Diamondhead	Gehrke, Andrew R	1.00
<b>15040 - Assessment Program</b>			
Student Info/testing Coord	Diamondhead	Resele, Anna M	1.00
<b>16010 - Board of Education</b>			
School Board	District-wide	Conner, Antoinette	1.00
		Said, Suad A	1.00
		Werb, Anna J	1.00
School Board - Chair	District-wide	Miller, Eric Charles	1.00
School Board - Clerk	District-wide	Hume, Michael S	1.00
School Board - Treasurer	District-wide	Alt, Abigail	1.00
School Board - Vice Chair	District-wide	Chester, Lesley A	1.00
<b>16020 - Superintendent</b>			
Exec Admin Assistant	Diamondhead	Kenney, Jami M	1.00
Superintendent	Diamondhead	Battle, Theresa F	1.00
<b>16030 - Assist Superintendent</b>			
Ace L4 Admin Asst/Specialist	Diamondhead	Maternowski, Patricia	0.50
Asst Superintendent	Diamondhead	Gersich, Brian M	1.00
<b>16040 - Human Resources</b>			
Dir Human Resources	Diamondhead	Sovine, Stacey	1.00
Hr Benefits Specialist	Diamondhead	Busker, Hailey M	1.00
Hr Coord	Diamondhead	Weiler, Tiffany M	1.00
Hr Employment Specialist	Diamondhead	Olson, Jessica L	1.00
Hr Labor Relations Mgr	Diamondhead	Demuth, Joy S	1.00
<b>16050 - Business Services</b>			
Ace L4 Admin Asst/Specialist	Diamondhead	Kaisershot, Stacy L	1.00
		Maternowski, Patricia	0.50
		Voth, Bethany A	1.00
		Wilson, Michele L	1.00
		Zellmer, Julie A	1.00
Compliance Coordinator	Diamondhead	Leake, Jarrod S	1.00



Staffing Detail by Budget Unit as of May 13, 2021

	Location Description	Full Name	FTE
<b>Dir Business</b>	<b>Diamondhead</b>	Rider, Lisa K	<b>1.00</b>
<b>Dir Finance</b>	<b>Diamondhead</b>	Dehne, Tyler	<b>1.00</b>
<b>Fiscal Services Coordinator</b>	<b>Diamondhead</b>	Ditter, Natalie L	<b>1.00</b>
<b>Pyrl Supervisor</b>	<b>Diamondhead</b>	Robasse, Christine M	<b>1.00</b>
<b>16060 - Marketing Communications</b>			
<b>Communications Coordinator</b>	<b>Diamondhead</b>	Drey, Wesley J	<b>1.00</b>
<b>Communications Specialist</b>	<b>Diamondhead</b>	Lake, Lisa L	<b>1.00</b>
<b>Dir Communications</b>	<b>Diamondhead</b>	Tinklenberg, Aaron D	<b>1.00</b>
<b>16070 - Student Registration</b>			
<b>Ace L3 Secretary</b>	<b>Diamondhead</b>	Hardt, Annette	<b>1.00</b>
		Kaiser, Tanya J	<b>1.00</b>
<b>Ace L4 Admin Asst/Specialist</b>	<b>Diamondhead</b>	Petroskey, Kellie A	<b>1.00</b>
<b>Student Systems Coordinator</b>	<b>Diamondhead</b>	Mccarthy, Brigid M	<b>1.00</b>
<b>17010 - VOLUNTARY PRE-SCHOOL</b>			
<b>CE Coord ECFE</b>	<b>Community Ed</b>	Check, Cindy	<b>0.30</b>
<b>CE Coordinator 2</b>	<b>Community Ed</b>	(blank)	<b>1.00</b>
	<b>Diamondhead</b>	Cherne, Lori M	<b>1.00</b>
		Miliovich, Tracy	<b>1.00</b>
	<b>Edward Neill Elementary</b>	Cantolla, Kaitlin M	<b>1.00</b>
	<b>Gideon Pond Elementary</b>	Smith-Lossiah, Sharon Kay	<b>1.00</b>
	<b>Harriet Bishop Elementary</b>	Fandrich, Kari M	<b>1.00</b>
		Santos, Miya D	<b>0.50</b>
	<b>Hidden Valley Elementary</b>	Rivers, Jessica L	<b>1.00</b>
		Tusa, Angela M	<b>1.00</b>
	<b>Rahn Elementary</b>	Haggerty, Lori	<b>1.00</b>
		Pettengill, Taylor M	<b>1.00</b>
	<b>Sky Oaks Elementary</b>	Dedomines, Jennifer L	<b>1.00</b>
		Santos, Miya D	<b>0.50</b>
	<b>Vista View Elementary</b>	Derusha, Jessalynn	<b>0.50</b>
		Rottjakob, Ronda K	<b>1.00</b>
	<b>Wm Byrne Elementary</b>	Hanson, Virginia A	<b>1.00</b>
<b>CE Program Associate</b>	<b>Community Ed</b>	Abraha, Wubet A	<b>0.75</b>
		Amos, Susan K	<b>1.00</b>
		Monnens, Selena	<b>0.88</b>
		Sampers, Karen M	<b>0.75</b>
		(blank)	<b>1.00</b>
	<b>Gideon Pond Elementary</b>	Yusuf, Ubah	<b>0.88</b>
	<b>Harriet Bishop Elementary</b>	Hovde, Lynelle R	<b>1.00</b>
		(blank)	<b>0.88</b>
	<b>Hidden Valley Elementary</b>	Rush, Diane	<b>1.00</b>
	<b>Rahn Elementary</b>	Burkart, Paula J	<b>0.88</b>
	<b>Sky Oaks Elementary</b>	(blank)	<b>1.00</b>
	<b>Vista View Elementary</b>	Vraa, Monica S	<b>0.88</b>
	<b>Wm Byrne Elementary</b>	(blank)	<b>1.00</b>
<b>CE Program Supervisor</b>	<b>Harriet Bishop Elementary</b>	Sanborn, Nicholas	<b>0.19</b>
<b>17011 - Elem Bldg Administrators</b>			

Staffing Detail by Budget Unit as of May 13, 2021

	Location Description	Full Name	FTE	
Principal	Edward Neill Elementary	Bomsta, Lyle J	1.00	
	Gideon Pond Elementary	Buchanan, Isis L	1.00	
	Harriet Bishop Elementary	Essay, Kenneth P	1.00	
	Hidden Valley Elementary	Black, Kristine C	1.00	
	Rahn Elementary	Robb, Brad E	1.00	
	Sky Oaks Elementary	Brandner, Renee	1.00	
	Vista View Elementary	Nepsund, Jeff L	1.00	
	Wm Byrne Elementary	Bonneville, Jon G	1.00	
17012 - Elem Bldg Clerical				
Ace L3 Secretary	Hidden Valley Elementary	Ontiveros, Eddieca	1.00	
Ace L4 Admin Asst/Specialist	Edward Neill Elementary	Stickle, Carolyn E	1.00	
	Gideon Pond Elementary	Olsen-Dickhausen, Sarah J	1.00	
	Harriet Bishop Elementary	Hinman, Jennifer J	1.00	
	Hidden Valley Elementary	Hreha, Kyle J	1.00	
	Rahn Elementary	Crosbie, Cindy	1.00	
	Sky Oaks Elementary	Halvorson Peralta, Nancy E	1.00	
	Vista View Elementary	Berra, Angie Marie	1.00	
	Wm Byrne Elementary	Mcbride, Kristen	1.00	
17013 - Elem Bldg Ed Assistants				
EA L2 Support	Edward Neill Elementary	Rosenberger, Rose M	0.63	
		(blank)	0.88	
	Gideon Pond Elementary	Abdi, Rahima A	0.38	
		Butorac, Melanie A	0.25	
		Kump, Jolene	0.63	
		Nur, Ifrah H	0.38	
		Becker, Sarah J	0.19	
	Harriet Bishop Elementary	Liyanage, Melanie	0.63	
		Mcconnell, Diane	0.25	
		Siddorn, Angela G	0.63	
		(blank)	0.06	
		(blank)	1.25	
	Hidden Valley Elementary	(blank)	1.25	
		Rahn Elementary	Johnson, Megann M	0.38
		Lou, Sandra M	0.38	
		Mosley, Julie G	0.75	
	Rahn Elementary	(blank)	0.63	
		Sky Oaks Elementary	Berge, Kristy K	0.31
		Haroon, Hajir S	0.63	
		Paul, Tara	0.31	
	Vista View Elementary	Cermak, Barbara L	0.19	
		Gilbertson, Sherry A	0.63	
		Olson, Diane B	0.38	
		(blank)	0.19	
	Wm Byrne Elementary	Boche, Emily A	0.38	
		Duran, Lindsey M	0.38	
		Engberg, Denise G	0.25	
		Henle, Angela G	0.63	
		(blank)	0.38	
		(blank)	0.38	
		(blank)	0.38	
		(blank)	0.38	
EA Level 3	Hidden Valley Elementary	Waters, Stacie	0.59	

Staffing Detail by Budget Unit as of May 13, 2021

	Location Description	Full Name	FTE
<b>Family Liaison</b>	<b>Harriet Bishop Elementary</b>	Wild, Priscila C	<b>1.00</b>
<b>17021 - Sec Bldg Administrators</b>			
<b>POSA</b>	<b>Burnsville HS</b>	Bellmont, Chris	<b>1.00</b>
	<b>Nicollet MS</b>	Leake, Donald	<b>1.00</b>
<b>Principal</b>	<b>Burnsville HS</b>	Helke, David M	<b>1.00</b>
	<b>Eagle Ridge MS</b>	Selim, Mohamed A	<b>1.00</b>
	<b>Nicollet MS</b>	Pohl, Angie J	<b>1.00</b>
<b>Principal Asst</b>	<b>Burnsville HS</b>	Braspenick, Cherie	<b>1.00</b>
		Derden, William M	<b>1.00</b>
		Lepper, Jay C	<b>1.00</b>
		Noble, Sarah J	<b>1.00</b>
	<b>Eagle Ridge MS</b>	Heim, Bill V	<b>1.00</b>
	<b>Nicollet MS</b>	Blaylark, Eddie D	<b>1.00</b>
<b>17022 - Sec Bldg Clerical</b>			
<b>Ace L3 Secretary</b>	<b>Burnsville HS</b>	Cecka, Nanette	<b>1.00</b>
		Funk, Ann E	<b>1.00</b>
		Mcclellan, Melissa E	<b>1.00</b>
		Moberg, Carlene	<b>1.00</b>
		Scherer, Deb M	<b>1.00</b>
		Thornton, Jenifer A	<b>1.00</b>
	<b>Eagle Ridge MS</b>	Evans-Vorhies, Maryann C	<b>1.00</b>
		Nixon, Susan T	<b>1.00</b>
	<b>Nicollet MS</b>	O'Hara Stuart, Erin	<b>1.00</b>
		Plomski, Marci	<b>1.00</b>
<b>Ace L4 Admin Asst/Specialist</b>	<b>Burnsville HS</b>	Cenci, Barbara	<b>1.00</b>
		Katzmarek, Abigail S	<b>1.00</b>
	<b>Eagle Ridge MS</b>	Scalzo, Kristin	<b>1.00</b>
	<b>Nicollet MS</b>	Lallier, Britney	<b>1.00</b>
<b>Registrar</b>	<b>Burnsville HS</b>	Westerlund, Danette R	<b>1.00</b>
<b>17027 - DEC Clerical</b>			
<b>Ace L2 Clerk</b>	<b>ECSE</b>	(blank)	<b>1.00</b>
<b>18010 - Transportation Required</b>			
<b>EA L2 Support</b>	<b>Edward Neill Elementary</b>	Rosenberger, Rose M	<b>0.25</b>
	<b>Gideon Pond Elementary</b>	Kump, Jolene	<b>0.25</b>
	<b>Harriet Bishop Elementary</b>	Mcconnell, Diane	<b>0.25</b>
	<b>Rahn Elementary</b>	Mosley, Julie G	<b>0.25</b>
	<b>Sky Oaks Elementary</b>	Paul, Tara	<b>0.25</b>
	<b>Vista View Elementary</b>	Olson, Diane B	<b>0.25</b>
	<b>Wm Byrne Elementary</b>	Henle, Angela G	<b>0.25</b>
<b>EA Level 3</b>	<b>Hidden Valley Elementary</b>	Waters, Stacie	<b>0.25</b>
<b>19010 - OP Custodial</b>			
<b>Custodian - Level 1</b>	<b>BES Transition Services</b>	Arreola, Bertha A	<b>0.50</b>
	<b>Burnsville HS</b>	Davila, Guillermo D	<b>1.00</b>
		Graupmann, David A	<b>1.00</b>
		Jacobson, Michael J	<b>1.00</b>

Staffing Detail by Budget Unit as of May 13, 2021

	Location Description	Full Name	FTE
<b>Custodian - Level 1</b>	<b>Burnsville HS</b>	Jimenez, David M	1.00
		Johnson, Nicholas A	1.00
		Linder, Anthony J	1.00
		Mcdonald, David	1.00
		Morgan, Julie C	1.00
		Ohlhauser, Connor C	1.00
		Orellana, Laura I	1.00
		Schwanke, Craig A	1.00
		Wick, Darryl	1.00
		(blank)	1.00
	<b>Diamondhead</b>	Abbott, Mark M	1.00
		Alvarado Robles, Luis	1.00
		Anderson, Sean M	1.00
	<b>District-wide</b>	Dotzler, Brenda L	1.00
		(blank)	1.00
	<b>Eagle Ridge MS</b>	Leon, Steven F	1.00
		Ly, Ty V	1.00
		Mathys, Frederic G	1.00
		Sahli, Teresea	1.00
	<b>ECSE</b>	Lopez, Joseph D	1.00
		Molina, Luis A	0.50
	<b>Edward Neill Elementary</b>	Alvarado, Mary	1.00
		Strauss, Levi	0.50
	<b>Gideon Pond Elementary</b>	Strauss, Levi	0.50
		Toeller, John F.	1.00
	<b>Harriet Bishop Elementary</b>	Robasse, Charles W	1.00
	<b>Hidden Valley Elementary</b>	Alvarado, Ernesto	1.00
		Sullivan, Geraldine E	1.00
	<b>Marion W Savage Elementary</b>	Spencer, Tandelyn T	1.00
	<b>Nicollet MS</b>	Kiehn, Jean M	1.00
		Martinez, Annette	1.00
		O'leary, Daniel L	1.00
		Fitzgerald, Elizabeth	0.50
	<b>Rahn Elementary</b>	Molina, Luis A	0.50
		Needham, Timothy	1.00
	<b>Sky Oaks Elementary</b>	Kinyon, Terry R	1.00
		Vertein, James	1.00
	<b>Vista View Elementary</b>	Arreola, Bertha A	0.50
		Morales, Manuela	1.00
	<b>Wm Byrne Elementary</b>	Fitzgerald, Elizabeth	0.50
		Mills, Derek R	1.00
<b>Custodian - Level 2</b>	<b>Burnsville HS</b>	Alvarado, Angel	1.00
		Gibbons, Patrick M	1.00
		Lundberg-Schmidt, Pamela M	1.00
		Mauser, Benjamin	1.00
		Wendorf, Eric S	1.00
	<b>District-wide</b>	Johnson, Michael A	1.00
		Sather, Derek D	1.00
		Wollersheim, Christian P	1.00
	<b>Eagle Ridge MS</b>	Jensen, Bryan J	1.00

Staffing Detail by Budget Unit as of May 13, 2021

	Location Description	Full Name	FTE
<b>Custodian - Level 2</b>	<b>Nicollet MS</b>	Teske, Jeffrey J	<b>1.00</b>
<b>Custodian - Level 3</b>	<b>Burnsville HS</b>	Johnson, Mark E	<b>1.00</b>
		Sahli, Jonathan C	<b>1.00</b>
	<b>Diamondhead</b>	Glende, Mark	<b>1.00</b>
		Thurber, Laurie	<b>1.00</b>
	<b>Eagle Ridge MS</b>	Johnson, Glenn A.	<b>1.00</b>
	<b>ECSE</b>	Dykstra, Bryan G.	<b>1.00</b>
	<b>Edward Neill Elementary</b>	Reimers, James F	<b>1.00</b>
	<b>Gideon Pond Elementary</b>	Gorzycki, Mark	<b>1.00</b>
	<b>Harriet Bishop Elementary</b>	Martinez, Robert V	<b>1.00</b>
	<b>Hidden Valley Elementary</b>	Nelson, Kirk A	<b>1.00</b>
	<b>Marion W Savage Elementary</b>	Johnson, Brian J	<b>1.00</b>
	<b>Nicollet MS</b>	Schmidt, Brent G	<b>1.00</b>
	<b>Rahn Elementary</b>	Gilbertson, Dale	<b>1.00</b>
	<b>Sky Oaks Elementary</b>	Kaisershot, Troy M	<b>1.00</b>
	<b>Vista View Elementary</b>	Gomez, Oscar A	<b>1.00</b>
	<b>Wm Byrne Elementary</b>	Henderson, Sean M	<b>1.00</b>
<b>Dir Operations</b>	<b>Diamondhead</b>	Lake, David	<b>0.40</b>
<b>Ops Supervisor</b>	<b>District-wide</b>	Wolfram, Michael	<b>1.00</b>
		Wurdeman, Scott	<b>1.00</b>
<b>19020 - OP Bldg Main &amp; Grounds</b>			
<b>Custodian - Level 2</b>	<b>District-wide</b>	Anderson, John Charles	<b>1.00</b>
		Chantara, Thomas Khamsing	<b>0.50</b>
		(blank)	<b>1.00</b>
<b>Custodian - Level 4</b>	<b>District-wide</b>	Powers, Scott D	<b>1.00</b>
<b>19030 - H &amp; S/ADA Compliance</b>			
<b>Ace L4 Admin Asst/Specialist</b>	<b>Diamondhead</b>	Maro, Julie A	<b>1.00</b>
<b>Dir Operations</b>	<b>Diamondhead</b>	Lake, David	<b>0.60</b>
<b>Ops Supervisor</b>	<b>District-wide</b>	Shawback, Arthur, Jr	<b>1.00</b>
<b>19041 - Facilities Rental</b>			
<b>Facilities Coordinator</b>	<b>Diamondhead</b>	Myers, Kristi A	<b>1.00</b>
<b>19050 - Purchasing/Warehouse</b>			
<b>Custodian - Level 2</b>	<b>District-wide</b>	Chantara, Thomas Khamsing	<b>0.50</b>
<b>Custodian - Level 4</b>	<b>District-wide</b>	Hadac, William	<b>1.00</b>
<b>21100 - Emergency Relief Aid</b>			
1st Grade Tcr	<b>Harriet Bishop Elementary</b>	(blank)	<b>0.50</b>
	<b>Rahn Elementary</b>	(blank)	<b>0.50</b>
	<b>Sky Oaks Elementary</b>	(blank)	<b>0.50</b>
	<b>Virtual Academy - Elementary</b>	(blank)	<b>1.00</b>
2nd Grade Tcr	<b>Edward Neill Elementary</b>	(blank)	<b>0.50</b>
	<b>Gideon Pond Elementary</b>	(blank)	<b>0.50</b>
	<b>Hidden Valley Elementary</b>	(blank)	<b>0.50</b>
	<b>Rahn Elementary</b>	(blank)	<b>0.50</b>
	<b>Virtual Academy - Elementary</b>	(blank)	<b>1.00</b>
	<b>Wm Byrne Elementary</b>	(blank)	<b>0.50</b>

Staffing Detail by Budget Unit as of May 13, 2021

	Location Description	Full Name	FTE
3rd GradeTcr	Virtual Academy - Elementary	(blank)	1.00
4th Grade Tcr	Virtual Academy - Elementary	(blank)	1.00
6th Grade Tcr	Virtual Academy - Secondary	(blank)	3.00
Art Tcr	Virtual Academy - Elementary	(blank)	0.25
Digital Learning Specialist	Virtual Academy - Elementary	(blank)	0.25
Music Tcr	Virtual Academy - Elementary	(blank)	0.25
Phy Ed Tcr	Virtual Academy - Elementary	(blank)	0.25

## ISD 191 Federal Relief Funds Summary

### FY20 FEDERAL EMERGENCY RELIEF FUNDS ELEMENTARY AND SECONDARY SCHOOL EMERGENCY (ESSER I)

**ISD 191 Allocations:**  
\$339,165

**Spending Timeline:**  
3/13/2020-9/30/2022

**Spending Parameters:**

- ❖ Keep students healthy and connected to learning

**ISD 191 Expenditures:**

- ❖ General Fund \$196,729
  - \$100,019- hourly wages for planning; Personal Protection Equipment (PPE) supplies; technology
  - \$96,710 - transportation delivery routes
- ❖ Community Service Fund \$142,436 Childcare hourly wages

### FY21 FEDERAL EMERGENCY RELIEF FUNDS CORONAVIRUS RELIEF FUNDS (CRF)

**ISD 191 Allocations:**  
\$2,730,383

**Spending Timeline:**  
7/1/2020-12/30/2020

**Spending Parameters:**

- ❖ Operational costs such as cleaning supplies and disinfectant sprayers, screening supplies, PPE, and increased transportation costs associated with transporting students in a socially distant manner
- ❖ Student, Family, and Educator needs such as technology devices and internet access, technology training, tutors or mentors to address learning loss, translation services, school-age care for essential workers, and professional development focused on learning models

**ISD 191 Expenditures:**

- ❖ Wages and Salaries \$546,048
- ❖ Benefits \$163,402
- ❖ Contracted Services (including substitutes) \$289,822
- ❖ Equipment and ventilation improvements \$192,408
- ❖ Supplies \$765,022
- ❖ Technology = \$772,963

### ELEMENTARY AND SECONDARY SCHOOL EMERGENCY 90%(ESSER I)

**ISD 191 Allocations:**  
\$1,296,393 less \$339,165  
above FY20

**Spending Timeline:**  
3/13/2020-9/30/2022

**Spending Parameters:**

- ❖ Keep students healthy and connected to learning

**ISD 191 Expenditures Budgeted:**

- ❖ Wages and Salaries \$573,663
- ❖ Benefits \$200,865
- ❖ Contracted Services (including substitutes) \$80,865
- ❖ Supplies \$89,331

**Non Public Schools Expenditures Budgeted:**

- ❖ Wages and Salaries \$10,478
- ❖ Benefits \$1,157
- ❖ Materials \$869

**ELEMENTARY AND SECONDARY SCHOOL EMERGENCY 9.5% (ESSER I)**

**ISD 191 Allocations:**  
\$244,299

**Spending Timeline:**  
3/13/2020-9/30/2022

**Spending Parameters:**

- ❖ Supplementing the Governor's Emergency Education Relief (GEER) priorities
- ❖ Mental health supports
- ❖ Historically underserved populations

**ISD 191 Expenditures Budgeted:**

- ❖ Contracted Services \$167,938
- ❖ Supplies \$73,906

**Non Public Schools Expenditures Budgeted:**

- ❖ Wages and Salaries \$2,291
- ❖ Technology \$164

**GOVERNOR'S EMERGENCY EDUCATION RELIEF FUND (GEER I)**

**ISD 191 Allocations:**  
\$295,665

**Spending Timeline:**  
3/15/2020-9/30/2022

**Spending Parameters:**

- ❖ Technology Access
  - broadband
  - hotspots
  - devices for students
- ❖ Summer School Programming
  - Staffing to reach 6:1 student to teacher ratio
  - Transportation

**ISD 191 Expenditures Budgeted:**

- ❖ Contracted Services \$2,094
- ❖ Technology \$290,599

**Non Public Schools Expenditures Budgeted:**

- ❖ Technology \$2,971

**FY22 FEDERAL EMERGENCY RELIEF FUNDS  
ELEMENTARY AND SECONDARY SCHOOL EMERGENCY (ESSER II)**

**ISD 191 Allocations:**  
\$7,187,155

**Spending Timeline:**  
7/1/2020-9/30/2023

**Spending Parameters:**

- ❖ Same uses as ESSER I
- ❖ Plus
  - Counteracting the effects of lost learning time
  - Preparing for reopening Fall 2021
  - Air quality projects

**ISD 191 Expenditures:**

- ❖ \$3,900,000 used for existing expenditures to allow for continuity of services and programs without reductions for FY22
- ❖ \$3,287,155 used for additional staffing and materials needed for programming needs to counteract the effects of interrupted learning time

**AMERICAN RESCUE PLAN HOMELESS I (ARP)**

**ISD 191 Allocations:**  
\$75,346.88

**Spending Timeline:**  
5/18/2021-9/30/2021

**Spending Parameters:**

- ❖ Immediate needs of children and youth experiencing homelessness this spring and summer
  - Must supplement and not supplant
  - Any expense necessary to support the identification, enrollment, participation, and success of children and youth experiencing homelessness and to provide them with wrap-around services.
  - Any of the sixteen allowable uses permitted by McKinney-Vento Act

**ISD 191 Expenditures:**

- ❖ To be determined



## AMERICAN RESCUE PLAN HOMELESS II (ARP)

**ISD 191 Allocations:**  
\$56,236

**Spending Timeline:**  
TBD

**NEW**

### Spending Parameters:

- ❖ Immediate needs of children and youth experiencing homelessness
  - Must supplement and not supplant
  - Any expense necessary to support the identification, enrollment, participation, and success of children and youth experiencing homelessness and to provide them with wrap-around services.
  - Any of the sixteen allowable uses permitted by McKinney-Vento Act

### ISD 191 Expenditures:

- ❖ To be determined

## EXPANDED SUMMER LEARNING PROGRAM

**ISD 191 Allocations:**  
\$825,200 sent \$206,300

**Spending Timeline:**  
5/19/2021-9/30/2022

### Spending Parameters:

- ❖ Extended School Year (ESY) services, Community Education offerings and child care services will not qualify to generate these funds.
- ❖ Can only be spent on Summer Programs with State Approved Alternative Programs (SAAP) student attendance and membership hours reported in the Fall Minnesota Automated Reporting Student System (MARSS) file.
- ❖ Additional staff (teachers, support staff, parent liaisons, etc.)
- ❖ Increased transportation
- ❖ Longer day or increased number of days

### ISD 191 Expenditures:

- ❖ In-Person Summer school programming
- ❖ Three week preschool summer programming, else ESSER III 20%

## GOVERNOR'S FLEXIBLE AMERICAN RESCUE PLAN

**ISD 191 Allocations:**  
\$413,000

**Spending Timeline:**  
6/14/2021-8/31/2022

### Spending Parameters:

- ❖ To create partnerships and provide services in the following areas:
  - Expand mental health and well-being supports to youth and adolescents attending school district and charter school learning programs
  - Partner with community businesses and organizations to develop a summer mentor and/or tutoring model that covers enrichment programming and other costs such as transportation and meals to increase student participation.
  - Bring school-based summer programs into the community, providing opportunities for enrichment, social and emotional skill building, mental health supports, and tutoring services.
  - Provide students with summer field trips for hands-on learning opportunities. Hands-on learning opportunities include activities such as trips to nature centers, state parks, zoos, museums or theaters.

### ISD 191 Expenditures:

- ❖ To be determined

## SUMMER PRESCHOOL FUNDING

**ISD 191 Allocations:**  
\$76,800 (min 16 students)

**Application:**  
5/24-6/2-2021

**Spending Timeline:**  
5/19/2021-9/30/2022

### Spending Parameters:

- ❖ For children age 4 or 5 on 9/1/2020 who have not yet attended kindergarten.
- ❖ For every \$4,800 allocated in funding, programs must serve at least one child
- ❖ Support tuition, teachers and staff, transportation, food service, interpreter or multilingual support costs, mental health consultants and inclusion specialists, materials/consumables, and field trip expenses
- ❖ Priority to children:
  - In foster care, under child protection, experiencing homelessness, tribally enrolled

	<p>or teenage parents</p> <ul style="list-style-type: none"> <li>➤ At risk for or currently receiving supports and services such as Early Childhood Special Ed (ECSE) or English Learner (EL)</li> <li>➤ Children qualifying for free or reduced-priced lunch or other public assistance programs that demonstrate a household income of 185 percent or less of the federal poverty guidelines</li> </ul> <ul style="list-style-type: none"> <li>❖ Program must offer a minimum of 100 instructional hours between 6/15/21 and first day of kindergarten programming</li> <li>❖ Must submit final report by 10/1/2021 with enrollment details</li> </ul> <p><b>ISD 191 Expenditures:</b></p> <ul style="list-style-type: none"> <li>❖ Six week preschool summer programming</li> </ul>
--	--

GOVERNOR'S ONE-TIME ABE FUNDING	
<p><b>ISD 191 Allocations:</b> \$121,145</p> <p><b>Spending Timeline:</b> FY22</p>	<p><b>Spending Parameters:</b></p> <ul style="list-style-type: none"> <li>❖ Meant to strengthen and expand services and can be spent during fiscal year 2021-2022. This should be used strategically to expand capacity, as opposed to meeting recurring expenses such as staff salaries. Examples of potential uses might include curricula development, marketing and outreach, purchase of computers and other devices, short term digital navigation for learners, etc.</li> </ul> <p><b>ISD 191 Expenditures:</b></p> <ul style="list-style-type: none"> <li>❖ To be determined</li> </ul>

PART B 611 Special Education Federal Funding	
<p><b>ISD 191 Allocations:</b> \$435,427.01</p> <p><b>Spending Timeline:</b> FY22</p> <p><b>NEW</b></p>	<p><b>Spending Parameters:</b></p> <ul style="list-style-type: none"> <li>❖ Still learning more</li> </ul> <p><b>ISD 191 Expenditures:</b></p> <ul style="list-style-type: none"> <li>❖ To be determined</li> </ul>

PART B 619 Preschool Incentive Ages 3-5 Special Education Federal Funding	
<p><b>ISD 191 Allocations:</b> \$36,589.37</p> <p><b>Spending Timeline:</b> FY22</p> <p><b>NEW</b></p>	<p><b>Spending Parameters:</b></p> <ul style="list-style-type: none"> <li>❖ Still learning more</li> </ul> <p><b>ISD 191 Expenditures:</b></p> <ul style="list-style-type: none"> <li>❖ To be determined</li> </ul>

## COVID TESTING GRANT

**ISD 191 Allocations:**  
\$467,479.59

**Spending Timeline:**  
FY22

**NEW**

**Spending Parameters:**

- ❖ Personnel to support COVID-19 testing programs
- ❖ Other items to support COVID-19 testing programs including
  - Lab equipment; Collection supplies; Personal Protective Equipment; Hygiene and cleaning supplies; Hardware and Software necessary; Contract with others; Expenses associated with Outreach and assistance and Testing Events

**ISD 191 Expenditures:**

- ❖ To be determined

## PANDEMIC ENROLLMENT LOSS SUPPORT

**ISD 191 Allocations:**  
\$621,846

**Spending Timeline:**  
FY22

**NEW**

**Spending Parameters:**

- ❖ Meant to replace loss of revenue as a result of the drop in enrollment from FY20 to FY21. Funds come from flexible State Fiscal Stabilization funds in the American Rescue Plan. This is not a part of the ESSER Fund. Funds were determined by formula and will be distributed during the FY22.

**ISD 191 Expenditures:**

- ❖ To be determined

## FY23 AND FY24 FEDERAL EMERGENCY RELIEF FUNDS AMERICAN RESCUE PLAN (ARP ESSER III)

**ISD 191 Allocations:**  
\$16,141,531

**Spending Timeline:**  
7/1/2020-9/30/2024

**Spending Parameters:**

One plan 2 finance codes

- ❖ Outline public engagement in the plan development (including Tribal partners, if applicable)
- ❖ Must publish safe return to school plan within 30 days
- ❖ Must post a summary of the public comment
- ❖ 90%
  - Same as ESSER I and II
    - Must engage community members in the ESSERIII spending plan development
      - Take attendance including the role of the individuals involved. Retain documentation of key findings from these engagement activities. Demonstrate how findings are used in plan development
      - Must coordinate and consult with tribal leaders with attendance, roles of individuals, retain documentation of key findings from these conversations. Demonstrate how findings are used in plan development
  - 20% must be used for counteracting the effects of lost learning time
    - Must be used outside of normal school day or school year - include measurement of needs, assessment, etc...
      - Summer learning or enrichment
      - Comprehensive after school enrichment
      - Extended day programs
      - Extended school year programs
    - These Out of School Time Learning opportunities must include measurement of need, progress monitoring, and a plan for measuring impact
- ❖ 9.5%
  - Comes with spending category requirements

	<p><b>ISD 191 Expenditures:</b></p> <p>May need to consider use of the ESSER III 20% funds asap</p> <ul style="list-style-type: none"> <li>❖ Virtual summer school programming</li> <li>❖ Three week preschool summer programming if not eligible elsewhere</li> <li>❖ Field trip opportunities for families and groups</li> <li>❖ College visits for students outside of the school day</li> <li>❖ Others to be determined</li> </ul>
--	--

## **Burnsville-Eagan-Savage District #191 Bargaining Unit Descriptions**

Below are definitions of the categories from which all of our Human Resource Assignments within the General Fund are derived. Close to 80% of the total general fund budget is made up of Salary and Benefits, including hourly assignments, from these groups within the General Fund.

**Clerical** refer to positions that fall under the **Association of Clerical Employees** collective bargaining agreement which are expected to complete clerical tasks as assigned.

**"Confidential employee"** means an employee who as part of the employee's job duties: (1) is required to access and use labor relations information as that term is defined in section [13.37, subdivision 1](#), paragraph (c) *"Labor relations information" means management positions on economic and noneconomic items that have not been presented during the collective bargaining process or interest arbitration, including information specifically collected or created to prepare the management position.*"; or  
(2) actively participates in the meeting and negotiating on behalf of the public employer.

**Custodial** refer to positions that fall under the **Service Employees International Union Local 284 - Custodial Employees** which are expected to complete custodial tasks as assigned.

**District Wide - Districtwide Administrators Association** includes the following positions whose roles vary depending upon their job description (note some of these positions are funded outside of the General Fund yet are included within this category) :

- Director of Curriculum, Instruction, and Student Support Services
- Director of Individualized Student Services
- Director of Operations, Properties, and Transportation
- Director of Community Education (funded by Fund 04)
- Director of Strategic Partnerships and Pathways
- Director of Activities and Athletics
- Director of Food Services (funded by Fund 02)
- Special Education Supervisor(s)
- Adult Basic Education Coordinator (funded by Fund 04)

**Educational Asst** - refer to positions that fall under the **Burnsville Association of Educational Assistants** collective bargaining agreement which are expected to complete tasks as assigned in the areas of support, health, media and special education.

**Info Tech Specialists** - refer to positions that fall under the **Information Technology Specialists** collective bargaining agreement which are expected to complete tasks as assigned to either level of Tech Spec 1, 2, 3, or 4.

**Operations Supervisors** - refer to positions that fall under the **Operations and Maintenance Supervisors** collective bargaining agreement which are expected to complete tasks as assigned for Operations Supervisors.

**Principals** - refer to positions that fall under the **Burnsville Principals Association** collective bargaining agreement which are expected to complete tasks as assigned for their assigned level of either Associate or Principal at Elementary, Middle or Senior High levels.

**School Board** - elected officials comprising the **ISD 191 School Board of Directors**.

**Superintendent** - Individual who leads ISD 191 as per job description and contract with School Board.

**Teachers** - refer to positions that fall under the **Burnsville Education Association** collective bargaining agreement which are expected to complete tasks as assigned for their position as a licensed teaching personnel as defined in the Public Employment Labor Relations Act (PELRA).

**Unaffiliated Employees** are positions that do not have a "Community of Interest" with established bargaining units within the district. These positions are At-Will and fall under Terms and Conditions of Employment verses a negotiated agreement.

Revised 3/5/2021

# General Fund Budget Comparative Summary

	Adopted Budget 2020-21	January Revised Budget 2020-21	April Revised Budget 2020-21	Adopted Budget 2021-22
<b>Total Beginning Fund Balance</b>	<b>\$ 14,498,325</b>	<b>\$ 20,326,027</b>	<b>\$ 20,326,027</b>	<b>\$ 21,483,321</b>
<b>Revenues</b>	<b>126,834,491</b>	<b>129,516,287</b>	<b>129,516,287</b>	<b>123,498,369</b>
Federal Cares Revenues		4,227,574	4,227,574	7,187,245
<b>Expenditures</b>	<b>127,825,136</b>	<b>130,052,781</b>	<b>128,358,993</b>	<b>132,480,192</b>
Federal Cares Expenditures		4,227,574	4,227,574	3,287,245
<b>Variance (Revenues - Expenditures)</b>	<b>(990,645)</b>	<b>(536,494)</b>	<b>1,157,294</b>	<b>(5,081,823)</b>
<b>Total Ending Fund Balance</b>	<b>\$ 13,507,680</b>	<b>\$ 19,789,533</b>	<b>\$ 21,483,321</b>	<b>\$ 16,401,498</b>
<b>Breakdown of Fund Balance Categories</b>				
Nonspendable	\$ 469,392	\$ 401,522	\$ 401,522	\$ 367,587
Restricted	3,170,301	7,348,102	7,348,102	5,476,553
Committed	1,096,765	1,818,986	968,986	1,784,069
Assigned		-	4,810,000	-
Unassigned	8,771,222	10,220,923	7,954,711	8,773,289
<b>Total Ending Fund Balance</b>	<b>\$ 13,507,680</b>	<b>\$ 19,789,533</b>	<b>\$ 21,483,321</b>	<b>\$ 16,401,498</b>
<b>Unassigned Fund Balance %</b>	<b>6.86%</b>	<b>7.61%</b>	<b>6.00%</b>	<b>6.46%</b>