

# THE ESSENTIALS

## *Enhancing Education with Educational Support Services*



Dear Educators,

As the Director of Educational Support Services, I am thrilled to bring you the latest edition of our newsletter, *The ESSentials*, with a special focus on supporting our English Language Learners (ELLs). Our department is committed to ensuring that every student, regardless of their language background, receives the necessary support to thrive academically and beyond.

In this edition, we delve into the myriad of services and programs that we offer to empower our ELLs on their educational journey. We understand the unique challenges that English Language Learners may face, and our goal is to bridge those gaps through tailored initiatives designed to enhance language acquisition, cultural integration, and overall academic success.

Together we can create an environment where English Language Learners not only overcome language barriers but also excel in their academic pursuits.

Thank you for your continued dedication to the success of all our students. Let's embark on this collaborative journey to uplift and support our English Language Learners.

Warm regards,

Kate Davern, Director of Educational Support Services at Eastern Suffolk BOCES

[esboces.org/ess](https://esboces.org/ess)

## THE FOCUS: ENGLISH LANGUAGE LEARNERS (ELLs)

In Volume 3 of *The ESSentials*, our attention shifts to the indispensable services and programs dedicated to aiding English language learners (ELLs). Educators universally recognize the crucial need for equitable opportunities, irrespective of linguistic origins. Supporting ELLs extends beyond language proficiency; it encompasses nurturing inclusivity, transcending cultural barriers, and enabling these students to actively participate in all academic and social domains. Let's explore the significance of these endeavors and applaud the transformative influence they wield in the lives of ELLs across our communities.



# Educational Support Services

Working Together for Excellence



**FEBRUARY AND MARCH 2024**

**VOLUME 3: ELLs**

## ★ ELL WORKSHOP SPOTLIGHT ★

### The Blueprint for English Language Learners and Using Scaffolds and Strategies for Student Success

**Presented by Pamela Solomon**



SCAN ABOVE OR [CLICK HERE TO REGISTER!](#)

**FEBRUARY 29, 2024**

**8:30AM – 2:30PM**

**ISC @ SEQUOYA, HOLTSVILLE**

*Participants will explore the **8 Principles of the Blueprint for English Language Learners Success** developed by New York State and how this Blueprint affects the instruction of English Language Learners. In addition, we will examine several techniques to scaffold/modify lessons for ELLs to improve their comprehension skills and improve their linguistic abilities.*

## PROFESSIONAL DEVELOPMENT: ELL CONSULTANTS



**Jacqueline Darvin, Ph.D.**, is the Program Director and Professor of Secondary Literacy Education at Queens College, CUNY, bringing twelve years of experience in teaching middle and high school English, with special attention to English as a New Language (ENL). A distinguished educator, she received the Presidential Excellence in Teaching Award from Queens College in 2021 and authored "Teaching the Tough Issues" in 2015. Recognized with honors such as the Long Island Educator of the Month Award, she shares her expertise at conferences on teaching and learning at local, national, and international levels.

**In-District Training: Instructional Strategies for English Language Learners (ELLs) and Multi-Lingual Learners (MLLs); Literacy in Content Areas Grades 6-12; Culturally Responsive Pedagogy; Teacher Induction**

**UPCOMING WORKSHOP: May 16, 2024 • Literacy in the Content Areas for Diverse Learners: Key Takeaways for Secondary Teachers**

**Carrie L. McDermott, Ed. D.**, is an Assistant Professor at Molloy College, where she teaches graduate level courses on teaching English to speakers of other languages (TESOL) and action research courses. Her areas of expertise include English as a Second Language for grades K-12 and adults; STEM; Response to Intervention; Curriculum Writing; Mentoring; and College and Career Readiness.

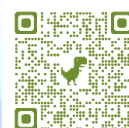
**In-District Training: Grades K-12; Complying/sustaining TESOL mandates; Implementing mentor programs and staff training; Utilizing curriculum writing to enhance ENL/ELL student success; Applying various instructional methods**



**Lizette Roman**, a proud TESOL member and conference presenter, is a recognized multilingual learner advocate skilled in bilingual education methodology, culture, and family engagement. Formerly an elementary and middle school bilingual educator and MTSS coach in Long Island, NY, Lizette was honored as Teacher of the Month by the New York State TESOL Association for her dedication during the early stages of the Covid pandemic. With a master's in educational leadership, she currently serves as an adjunct professor for bilingual education at Stony Brook University and is the Founder of Educating with Love, offering tailored professional development to support teachers of multilingual learners.

**In-District Training: Culturally Responsive Education through the Lens of MLL Students in All Content Areas; Second Language Acquisition; Translanguaging; Scaffolding; Comprehensible Input; SIOP Methods-Language Objectives & Comprehensible Input; Effective Communication w/ parents of ELL/MLL students**

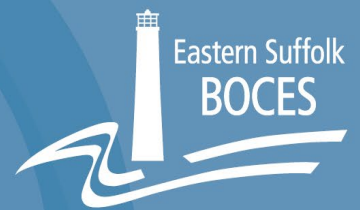
**To inquire about future ELL workshops, or to arrange in-district Professional Development, email [pdreferral@esboces.org](mailto:pdreferral@esboces.org)**





# Educational Support Services

Working Together for Excellence



**FEBRUARY AND MARCH 2024**

**VOLUME 3: ELLs**



## ARTS-IN-EDUCATION



Contact [artsined@esboces.org](mailto:artsined@esboces.org) for more info on ELL programs, or scan the QR code to access the webpage where you will find their entire catalog of programs, artists and activities.



### EVERGREEN – SEMPREVERDE – SIEMPREVERDE – SEMPVERNENT – A Multilingual Performance by Incanto Productions Suffolk Theatre – Riverhead

[CLICK TO REGISTER](#)

"EVERGREEN" is a dedicated endeavor that tackles two pressing global concerns: the environment and recycling. This production can be aptly characterized as a blend of scientific exploration and environmental awareness. Within the framework of the show, students are immersed in songs delivered in English, Italian, French, and Spanish, all thoughtfully composed to enhance language acquisition and cultivate an appreciation for diverse cultures.



## SCHOOL LIBRARY SYSTEM



*AV2 eBook collection on the VRC supports 16 languages ranging from Spanish to Hindi to Italian to Swahili.*

### SPANISH LANGUAGE COLLECTION

*SLS offers a collection of Spanish language books schools can borrow.  
This collection of 50+ titles circulates in class sets.*



If you have any questions, please contact your local school librarian or Carl Vitevitch, the Eastern Suffolk BOCES School Library System Administrative Coordinator, at (631) 286-0891 or at [cvitevitch@esboces.org](mailto:cvitevitch@esboces.org).

## SCHOOL DATA BANK SERVICES

The *School Data Bank Services Program, Staff Developers/Shared Data Expert Service* is available to support districts in streamlining their data analysis initiatives and reporting efforts.

Our dedicated *Staff Developer/Shared Data Expert* collaborates closely with district administrators and educators to meticulously analyze and interpret data from diverse sources. This includes data crucial to the progress of our English Language Learner (ELL) students and ENL educators. The insights gleaned from this analysis play a pivotal role in shaping curriculum and program decisions.

As an illustration, one of our local districts is currently delving into the advancement of their ELL students using NYSESLAT scores. Through our program, they will embark on a journey to systematically track student growth over time, enabling a deeper comprehension of learning gaps and facilitating necessary instructional adjustments.

Unlock the power of data with our *School Data Bank Services Program's Staff Developer/Shared Data Expert Service*, and empower your district's educational journey.

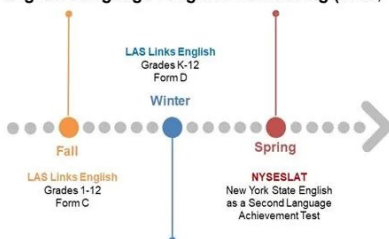
*For information on working with a Staff Developer/Shared Data Expert on analyzing ELL data contact Vanessa Biagioli-Dittrich at [vdittrich@esboces.org](mailto:vdittrich@esboces.org).*

## THIRD PARTY ASSESSMENTS: LAS LINKS

Utilizing the [Bilingual Common Core Progressions](#) for English Language Learners, LAS Links® Online can be used to monitor student progress in acquiring English language skills throughout the school year in Speaking, Listening, Reading and Writing. Using student performance data, the platform enables educators to understand the progress of students as they move through the stages of language acquisition, from grades pre K–12. This research-based assessment allows teachers to pinpoint areas of student strengths and weaknesses well before NYSESLAT testing, allowing for targeted and meaningful instruction for each student.



### English Language Progress Monitoring (K-12)



**LAS Links Español** is a research-based, Spanish language proficiency assessment that measures the speaking, listening, reading, writing, and comprehension skills of K–12 students. It helps teachers identify language difficulties a student may have in Spanish and track and monitor progress in attaining Spanish language proficiency. When combined with LAS Links English, it provides a complete linguistic profile.

Contact [ThirdPartyAssessments@esboces.org](mailto:ThirdPartyAssessments@esboces.org) for more info!



## WORDS OF GRATITUDE: EDUCATIONAL SUPPORT SERVICES SHINE



### Arts-In-Education

✚ *"The PEACE project was important to us because it gave students who newly immigrated to the country a voice... It gave us a window to see into how they feel, and what their struggles may have been. We are so happy that the artwork allowed that to shine through."* – Assistant Superintendent

### Model Schools

✚ *"Thank you so very much not only for your participation in our AI in Education Collegial Circle Workgroup but also for your ability to take disparate slides and weave them expertly into one, artfully designed presentation. Your presentation was well executed and received, in part, because of your leadership and technical expertise. It's been a pleasure working with you and we look forward to future collaborations."*  
Praise for Educational Technology Coaches, Bernadette McHugh-Schreiber and William Redmond

### Professional Development

✚ *"Lizette Roman touched on every topic and more. She was the best professional development teacher I've had thus far."* Educator who attended the *Methods of Engaging Multilingual Learners through a Culturally Responsive Lens* workshop, presented by Lizette Roman

✚ *"I learned many different resources to be applied in the classroom. The presenter had a ton of information."*  
Educator who attended the *Best Practices for High-Impact Learning* workshop, presented by Ed Dougherty

### School Library System

✚ *"Everyone at SLS is so helpful and friendly. I'm always amazed when I call or need something, how quickly they are able to act and help."*

✚ *"Carl and Melanie can sort out just about any question thrown their way. They are both easy to reach and respond back to requests quickly."*

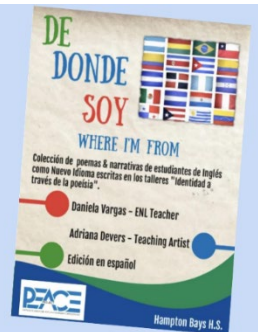
## SUPPORTING OUR SCHOOLS Arts-in-Education

### EXPLORING CULTURAL IDENTITY: DE DONDE SOY – WHERE I'M FROM

**KNOW...**to see beyond a literary piece, an art piece and see the connection across artistic disciplines on the given topic, as it pertains to their own personal experiences.

**UNDERSTAND...**how literature is used as a tool for social change and how the arts help us build community, achieve personal and community growth.

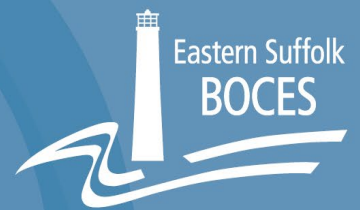
**ARE ABLE TO...**create their own literary pieces, conveying their individual messages/sharing parts of the story that makes them unique members of their school community, highlighting their cultural background.



Exploring cultural identity through poetry @  
Hampton Bays HS

# Educational Support Services

Working Together for Excellence



**FEBRUARY AND MARCH 2024**

**VOLUME 3: ELLs**

## THIS IS MY STORY



*"This project tells the story of students who traveled for miles in search of a better future. It holds their fears and their heartbreak, and at the same time, their hope about what lies ahead. This project is dedicated to all of the children who are currently on their way to our classrooms. May you find strength in their stories."*

## EXTENDED DAY ENRICHMENT

Contact [schoolyearenrichment@esboces.org](mailto:schoolyearenrichment@esboces.org) for more info.



### Hanukkah Celebration at Clinton Avenue Elementary, Comsewogue

*In celebration of Hanukkah, the students at the Clinton afternoon program engaged in the traditional dreidel spinning game and learned about the history behind this special holiday tradition. Through interactive activities like these, our after-school programs aim to educate children on diverse cultural customs and bring festive fun to their enriching daily lessons.*



### Holiday Community Service Project, John F. Kennedy Elementary, East Islip



The students at John F. Kennedy Elementary School in East Islip spread holiday cheer with their enrichment morning program's community service project this year. They collected small gift items and lovingly packed them into festive gift bags that they had brightly decorated themselves. These gifts were delivered to the residents at Momentum at South Bay Rehabilitation and Nursing so that those residents could better enjoy the upcoming holidays. The students did a wonderful job with this thoughtful project. Great work and thank you to the counselors who helped facilitate this act of community service!





## MODEL SCHOOLS



### STEM Snowflakes at Wenonah

Third graders at Wenonah Elementary School connected STEM to the season by 3D printing their own snowflakes. Educational technology coach Mrs. McGuire worked with the students in Tinkercad to first design their snowflakes. Third graders learned how to duplicate, rotate and mirror the geometric shape to create a unique snowflake.

The designs were then 3D-printed for students to display and enjoy. The project connected back to a book that the third graders read called, "Snowflake Bentley," which highlighted how each snowflake is an original work of art.

## FEBRUARY 2024 EVENTS

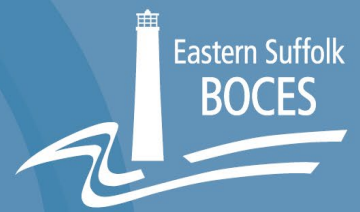


**CLICK THE EVENT TITLE TO VIEW DETAILS AND REGISTER ON FRONTLINE,  
OR SCAN THE QR CODE TO ACCESS THE ENTIRE CATALOG.**

START DATE	EVENT	PROGRAM
2/1	<a href="#">LILIE ONLINE: Amplifying Cultural Competency &amp; Student Voice</a>	Model Schools
2/1	<a href="#">LILIE ONLINE: Anxiety Disorders &amp; Students Today: What Teachers Can Do</a>	Model Schools
2/1	<a href="#">LILIE ONLINE: Cooperative Learning Structures and Strategies</a>	Model Schools
2/1	<a href="#">LILIE ONLINE: EdTech Tools for Equity</a>	Model Schools

# Educational Support Services

Working Together for Excellence



**FEBRUARY AND MARCH 2024**

**VOLUME 3: ELLs**

START DATE	EVENT	PROGRAM
2/1	<a href="#"><u>LILIE ONLINE: Engaging Family-Strengthening Ties through an Equity Based Approach</u></a>	Model Schools
2/1	<a href="#"><u>LILIE ONLINE: Positive Discipline: Ending the School-to-Prison Pipeline</u></a>	Model Schools
2/1	<a href="#"><u>LILIE ONLINE: STEM and the New Generation</u></a>	Model Schools
2/2	<a href="#"><u>Desmos for New Users Presented by Andy Malbouef</u></a>	Professional Development
2/5	<a href="#"><u>Desmos for Experienced Users Presented by Andy Malbouef</u></a>	Professional Development
2/5	<a href="#"><u>ELA Multiple Choice Test Preparation 2024 for Grades 3-6: How Can We Better Help Our Students Succeed? Presented by Deborah Linscott-Feinstein</u></a>	Professional Development
2/6	<a href="#"><u>Digital Storytelling that Supports the Writing Process</u></a>	Model Schools
2/6	<a href="#"><u>Northwell School Mental Health Program - School Threat Assessment</u></a>	Professional Development
2/6	<a href="#"><u>Project Based Learning for Social Studies Presented by Wendy Braxton</u></a>	Professional Development
2/7	<a href="#"><u>2023-2024 NYSAA Administration Training - Facilitated Training for the NYS Alternate Assessment Computer-Based Testing for ELA, Mathematics &amp; Science</u></a>	School Data Bank Services
2/7	<a href="#"><u>Library Leadership Academy: CancerCare Overview</u></a>	School Library System
2/8	<a href="#"><u>Library Leadership Academy: Ancestry Classroom</u></a>	School Library System
2/8	<a href="#"><u>Library Leadership Academy: Remember Liss - The Remarkable True Story of One Woman's Enslavement and Freedom in New York</u></a>	School Library System
2/8	<a href="#"><u>Understanding Autism and Behavior Presented by Dr. Jeanne Villani, Psy.D.</u></a>	Professional Development
2/9	<a href="#"><u>Conflict Resolution Presented by Dr. Kelly Zinn, DSW, LSW</u></a>	Professional Development
2/9	<a href="#"><u>Discover Strategies to Incorporate the Crosscutting Concepts in Your Life Science Lessons Presented by Glen Cochran</u></a>	Professional Development
2/12	<a href="#"><u>PEACE out - Plaza Cinema &amp; Media Arts Center</u></a>	Arts-in-Education
2/12	<a href="#"><u>LILIE ONLINE: Amplifying Cultural Competency &amp; Student Voice</u></a>	Model Schools
2/12	<a href="#"><u>LILIE ONLINE: Anxiety Disorders &amp; Students Today: What Teachers Can Do</u></a>	Model Schools
2/12	<a href="#"><u>LILIE ONLINE: Cooperative Learning Structures and Strategies</u></a>	Model Schools



# Educational Support Services

Working Together for Excellence



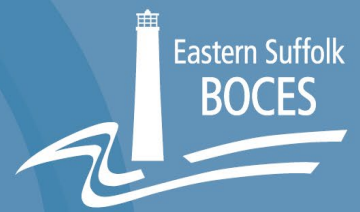
**FEBRUARY AND MARCH 2024**

**VOLUME 3: ELLs**

START DATE	EVENT	PROGRAM
2/12	<a href="#">LILIE ONLINE: EdTech Tools for Equity</a>	Model Schools
2/12	<a href="#">LILIE ONLINE: Engaging Family-Strengthening Ties through an Equity Based Approach</a>	Model Schools
2/12	<a href="#">LILIE ONLINE: STEM and the New Generation</a>	Model Schools
2/12	<a href="#">Phonological Awareness, Phonics, and Beginning Reading Instruction Presented by Lauren Kolbeck</a>	Professional Development
2/12	<a href="#">Writing for Middle School Students Presented by Linda Sommer</a>	Professional Development
2/13	<a href="#">Effective Teaching Strategies for English Language Learners Presented by Diane Ripple / Consulting That Makes A Difference</a>	Professional Development
2/13	<a href="#">Library Leadership Academy: New Features on TeachingBooks</a>	School Library System
2/13	<a href="#">Library Leadership Academy: Swank Movie Licensing USA Training</a>	School Library System
2/14	<a href="#">Library Leadership Academy: Canva for Educators</a>	School Library System
2/14	<a href="#">Library Leadership Academy: Introduction to AI for Library Media Specialists</a>	School Library System
2/14	<a href="#">Writing Essays and Short Response Test Preparation for Grades 3-6 2024 Presented by Deborah Linscott-Feinstein</a>	Professional Development
2/15	<a href="#">Aspiring Administrators Collegial Circle, Facilitated by Dr. Deborah De Luca</a>	Professional Development
2/15	<a href="#">Getting Started with Discovery Education</a>	Model Schools
2/15	<a href="#">LGBT 101 Presented by LGBT Network</a>	Professional Development
2/15	<a href="#">Northwell School Mental Health Program - Management of Behavioral Disorders</a>	Professional Development
2/15	<a href="#">Preparing Students for the New Science (NYSED) Exam Grades 3-5 Presented by Glen Cochran</a>	Professional Development
2/15	<a href="#">Out of Certification Verification - Correcting Errors in Course Codes to Ensure Teachers are Instructing within their Certification Area</a>	School Data Bank Services
2/16	<a href="#">ESBOCES LTG Consortium: Enhancing Personalized Learning for All</a>	Model Schools
2/16	<a href="#">Navigating the Ethics of AI in Education</a>	Model Schools
2/20	<a href="#">Newsela: Empowering Educators for Students Success</a>	Model Schools

# Educational Support Services

Working Together for Excellence



**FEBRUARY AND MARCH 2024**

**VOLUME 3: ELLs**

START DATE	EVENT	PROGRAM
2/26	<a href="#">Generation AI: The "What?" "Why?" and "How?" of Artificial Intelligence</a>	Model Schools
2/27	<a href="#">PBL: Not an Event, but a New Way of Thinking Presented by Steven W. Edwards, Ph.D., National Speaker and Presenter</a>	Professional Development
2/27	<a href="#">PEACE Project M.A.D.L.I. Professional Arts Development Series: Session 1 - Special Topic Workshop E STEAM with Anu Annam</a>	Arts-in-Education
2/27	<a href="#">Unlock the Power of Videos: Elevate Teaching &amp; Learning Using Current Videos &amp; Media Trends</a>	Model Schools
2/27	<a href="#">What is All the Buzz About Artificial Intelligence?</a>	Model Schools
2/27	<a href="#">i-Ready Spring User Meeting</a>	Third Party Assessments
2/28	<a href="#">AccuTrain: The Innovative Schools Summit NYC: Early Pricing / Super Bundle</a> <a href="#">AccuTrain: The Innovative Schools Summit NYC: Bundle Pricing</a> <a href="#">AccuTrain: The Innovative Schools Summit NYC: Main Conference Only</a>	Professional Development
2/28	<a href="#">Northwell School Mental Health Program - OCD, Tourette's and Tic Disorders</a>	Professional Development
2/28	<a href="#">PEACE Critical Community of Practice (CCoP) February: Engagement with Projects - Focus on EDI/CR-S</a>	Arts-in-Education
2/29	<a href="#">Math K-5: Measurement and Data Presented by Nicolle Santaromita</a>	Professional Development
2/29	<a href="#">The Blueprint for English Language Learners and Using Scaffolds and Strategies for Student Success Presented by Pamela Solomon</a>	Professional Development

## MARCH 2024 EVENTS

CLICK THE EVENT TITLE TO VIEW DETAILS AND REGISTER ON FRONTLINE,  
OR SCAN THE QR CODE TO ACCESS THE ENTIRE CATALOG.



START DATE	EVENT	PROGRAM
3/1	<a href="#">Improve Learning Outcomes: Build Relational Trust, Connection and Safety Through Play! Presented by Howard Moody</a>	Professional Development
3/1	<a href="#">LILIE ONLINE: Bridging Our Connectivity</a>	Model Schools
3/1	<a href="#">LILIE ONLINE: Creating Dynamic Learning Experiences in the Diverse Classroom</a>	Model Schools
3/1	<a href="#">LILIE ONLINE: Cultivating Student Leadership</a>	Model Schools



# Educational Support Services

Working Together for Excellence



**FEBRUARY AND MARCH 2024**

**VOLUME 3: ELLs**

START DATE	EVENT	PROGRAM
3/1	<a href="#"><u>LILIE ONLINE: Growing the Critically Conscious Classroom</u></a>	Model Schools
3/1	<a href="#"><u>LILIE ONLINE: Teaching Gifted Students</u></a>	Model Schools
3/1	<a href="#"><u>LILIE ONLINE: The Peaceful Classroom and Easing Student Anxiety and Stress</u></a>	Model Schools
3/1	<a href="#"><u>Making Math an Active Subject: Looking Beyond Your Textbook Presented by Kristen Acosta</u></a>	Professional Development
3/1	<a href="#"><u>Sticks &amp; Stones: Understanding Implicit Bias and Stereotypes Presented by Samantha Rini, NYSUT Trained Facilitator</u></a>	Professional Development
3/4	<a href="#"><u>Literacy Coaching: Planning and Implementing Professional Development to Meet Teachers Where They Are Presented by Lauren Kolbeck</u></a>	Professional Development
3/4	<a href="#"><u>Resilient Leadership for High-Performing Teams: Seminar 3 - Cultivating a Learning Culture Presented by Dr. Russo</u></a>	Professional Development
3/5	<a href="#"><u>Collaborating for Change: A Team Approach to Behavior Presented by Dr. Kelly Zinn</u></a>	Professional Development
3/5	<a href="#"><u>How to Incorporate 3D Printing into the Curriculum</u></a>	Model Schools
3/5	<a href="#"><u>Preparing Students for the New Regents Examination in Algebra I Presented by Trish Despagni</u></a>	Professional Development
3/6	<a href="#"><u>Getting Started with Discovery Education</u></a>	Model Schools
3/7	<a href="#"><u>Northwell School Mental Health Program - Co-Occurring Disorders and Substance Use</u></a>	Professional Development
3/7	<a href="#"><u>School Library System Liaison Meeting</u></a>	School Library System
3/7	<a href="#"><u>SLS Council Meeting</u></a>	School Library System
3/8	<a href="#"><u>Art Room Alternative Digital Approaches - AI and the Art Room</u></a>	Arts-in-Education
3/8	<a href="#"><u>Arts-in-Ed Showcase</u></a>	Arts-in-Education
3/8	<a href="#"><u>Being A Champion for Kids Presented by Mills Rodgers</u></a>	Professional Development
3/8	<a href="#"><u>IXL Learning and LinkIt! Lunch &amp; Learn</u></a>	Third Party Assessments
3/8	<a href="#"><u>Preparing Students for the New Science (NYSED) Exam Grades 6-8 Presented by Brian Vorwald</u></a>	Professional Development
3/11	<a href="#"><u>Creating a Culture of Care: How to Implement Restorative Justice/Practices in Your School and/or School District Presented by Adele Bovard</u></a>	Professional Development

# Educational Support Services

Working Together for Excellence



**FEBRUARY AND MARCH 2024**

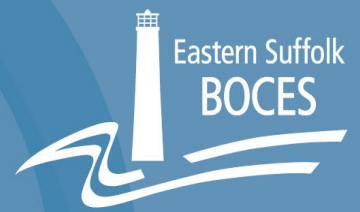
**VOLUME 3: ELLs**

START DATE	EVENT	PROGRAM
3/12	<a href="#"><u>ESBOCES LTG Consortium: Enhancing Personalized Learning for All</u></a>	Model Schools
3/12	<a href="#"><u>Inspiring Educators to Discover the Potential of AI Using Office 365</u></a>	Model Schools
3/12	<a href="#"><u>Leveled Literacy Intervention (LLI) Primary Systems Grades K-2 Presented by Dr. Terri Beeler, Heinemann Consultant</u></a>	Professional Development
3/12	<a href="#"><u>Library Leadership Academy: Discovery Education Bootcamp</u></a>	School Library System
3/13	<a href="#"><u>Diversity, Equity, and Inclusivity: Culturally Responsive Sustaining Education Framework Presented by Wendy Braxton</u></a>	Professional Development
3/13	<a href="#"><u>Engage Learners with Digital Tools</u></a>	Model Schools
3/13	<a href="#"><u>How to Use Digital Interactive Notebooks in Google Slides</u></a>	Model Schools
3/13	<a href="#"><u>PEACE Critical Community of Practice (CCoP) March: Engagement with Projects - Focus on SEL/CR-S</u></a>	Arts-in-Education
3/14	<a href="#"><u>An Overview of Autism Spectrum Disorders (NYS Education Department Approved Training) Presented by Dr. Jeanne Villani, Psy.D.</u></a>	Professional Development
3/14	<a href="#"><u>Northwell School Mental Health Program - Mood Disorder &amp; Bipolar Disorder</u></a>	Professional Development
3/14	<a href="#"><u>Take a Look at the New Computer Science &amp; Digital Fluency Standards</u></a>	Model Schools
3/14	<a href="#"><u>Vocabulary Instruction for Durable Learning: How Words Get Learned and Stay Learned Presented by Amy Benjamin</u></a>	Professional Development
3/15	<a href="#"><u>Creating Your Own Instructional Video</u></a>	Model Schools
3/15	<a href="#"><u>Positive Behavior Interventions and Supports Presented by Diane Ripple, Consulting That Makes A Difference</u></a>	Professional Development
3/15	<a href="#"><u>Teaching with Intention: Fountas &amp; Pinnell Benchmark Assessment System, A Two-Part Series - Grades K-8 Presented by Kristina Seeley</u></a>	Professional Development
3/18	<a href="#"><u>Differentiation and DEI in the Language Classroom: Meeting Every Learner Where They Are Presented by Joshua Cabral</u></a>	Professional Development
3/18	<a href="#"><u>Diversity, Equity, and Inclusivity: Grading for Equitable Impact: A Two-Day Event Presented by Becky Peppler</u></a>	Professional Development
3/20	<a href="#"><u>Effective ENL Instructional Strategies Presented by Luisa Travaglia and Stella Kostopoulos on behalf of C.I.T.E.</u></a>	Professional Development
3/20	<a href="#"><u>Introduction to Structured Literacy (and Orton Gillingham-Based Practices) Presented by Kerry Leo, Da Vinci Collaborative</u></a>	Professional Development
3/20	<a href="#"><u>Introduction to Structured Literacy (and Orton Gillingham-Based Practices) Presented by Kerry Leo, Da Vinci Collaborative</u></a>	Professional Development



# Educational Support Services

Working Together for Excellence



**FEBRUARY AND MARCH 2024**

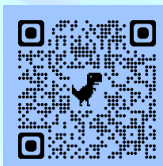
**VOLUME 3: ELLs**

START DATE	EVENT	PROGRAM
3/20	<a href="#"><u>LAS Links Spring User Meeting **ESBOCES LAS Links Cohort Districts Only**</u></a>	Third Party Assessments
3/20	<a href="#"><u>Library Leadership Academy: Books. Share. Eat. (Elementary)</u></a>	School Library System
3/20	<a href="#"><u>Library Leadership Academy: Books. Share. Eat. (Secondary)</u></a>	School Library System
3/21	<a href="#"><u>Discover Strategies to Incorporate the Crosscutting Concepts in Your Earth and Space Sciences Lessons Presented by Brian Vorwald</u></a>	Professional Development
3/21	<a href="#"><u>Exploring Creativity and Learning with Makey Makey: Unleash Inventive Minds</u></a>	Model Schools
3/21	<a href="#"><u>Exploring Purposefully Planned Read Alouds to Boost Comprehension, Deepen Background Knowledge, and Vocabulary Presented by Lauren Kolbeck</u></a>	Professional Development
3/21	<a href="#"><u>Northwell School Mental Health Program - Paraprofessional Training: The Important Role of Paraprofessionals in Special Education</u></a>	Professional Development
3/25	<a href="#"><u>Leading and Supporting Authentic Learning in Your School Presented by Ed Dougherty</u></a>	Professional Development
3/26	<a href="#"><u>Helping Students with Big Emotions: Powerful Tools for Teaching Self-Regulation Presented by Frank Kros, International Presenter</u></a>	Professional Development
3/26	<a href="#"><u>PEACE Project M.A.D.L.I Professional Arts Development Series: Session 2 - Special Topic Workshop E STEAM® with Anu Annam</u></a>	Arts-in-Education
3/27	<a href="#"><u>Artificial Intelligence Conference - AI Educate: Empowering the Future of Learning</u></a>	Professional Development
3/29	<a href="#"><u>Art Room Alternative Digital Approaches - Copyright and Appropriation in the Art Room</u></a>	Arts-in-Education

FOR MORE INFORMATION ON ANY OF THE EVENTS LISTED ABOVE,  
PLEASE USE THE COLOR-CODED KEY BELOW TO CONTACT EACH PROGRAM DIRECTLY.

PROGRAM	CONTACT
Arts-In-Education	<a href="mailto:artsined@esboces.org">artsined@esboces.org</a>
Model Schools	<a href="mailto:mspd@esboces.org">mspd@esboces.org</a>
Professional Development	<a href="mailto:pdonlinesupport@esboces.org">pdonlinesupport@esboces.org</a>
School Library Systems	<a href="mailto:slshelp@esboces.org">slshelp@esboces.org</a>
School Data Bank Services	<a href="mailto:sdb@esboces.org">sdb@esboces.org</a>
Third Party Assessments	<a href="mailto:thirdpartyassessments@esboces.org">thirdpartyassessments@esboces.org</a>

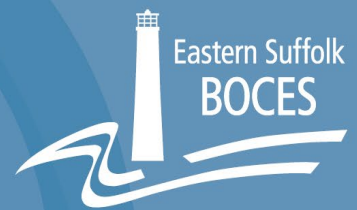
**EDUCATIONAL SUPPORT SERVICES DEPARTMENT WEBPAGE:**



[esboces.org/ess](https://esboces.org/ess)

# Educational Support Services

Working Together for Excellence



**FEBRUARY AND MARCH 2024**

**VOLUME 3: ELLs**



## **Eastern Suffolk BOCES Board and Administration**

### **President**

Lisa Israel

### **Vice President**

William K. Miller

### **Members**

Arlene Barresi  
Linda S. Goldsmith  
William Hsiang  
Susan Lipman  
Joseph LoSchiavo  
Anne Mackesey

James F. McKenna  
Brian O. Mealy  
Catherine M. Romano  
Robert P. Sweeney  
John Wyche

### **District Superintendent**

Vacant

### **Chief Operating Officer**

David Wicks

### **Associate Superintendent**

Claudy Damus-Makelele - Educational Services

### **Associate Superintendent**

James J. Stucchio - Management Services

### **Assistant Superintendent**

Nichelle Rivers, Ed.D. - Human Resources

### **Directors**

Leah Arnold - Career, Technical and Adult Education  
Kate Davern - Educational Support Services  
Arlene Durkalski - Human Resources  
Mark Finnerty - Facilities  
April Francis-Taylor - Diversity, Equity, and Inclusivity  
Susan Maddi - Administrative Services  
Gina Reilly - Special Education  
Darlene Rocas - Regional Information Center  
Vacant - Business Services

Eastern Suffolk BOCES does not discriminate against any employee, student, applicant for employment, or candidate for enrollment on the basis of sex, gender, race, color, religion or creed, age, weight, national origin, marital status, disability, sexual orientation, gender identity or expression, transgender status, military or veteran status, domestic violence victim status, genetic predisposition or carrier status, or any other classification protected by Federal, State, or local law. ESBOCES also provides equal access to the Boy Scouts and other designated youth groups. Inquiries regarding the implementation of the above laws should be directed to either of the ESBOCES Civil Rights Compliance Officers at [ComplianceOfficers@esboces.org](mailto:ComplianceOfficers@esboces.org): the Assistant Superintendent for Human Resources, 631-687-3029, or the Associate Superintendent for Educational Services, 631-687-3056, 201 Sunrise Highway, Patchogue, NY 11772. Inquiries may also be addressed to the Office for Civil Rights at the US Department of Education, 32 Old Slip, 26<sup>th</sup> Floor, New York, NY 10005, 646-428-3800, [OCR.NewYork@ed.gov](mailto:OCR.NewYork@ed.gov).