

# Class of 2028 Freshman Course Requests



Park Hill High School

# Counselors

---

Ms. Lucas (A – Ce)



Mr. Mesh (L – O)



Ms. Lisi (Ch-Gi)



Ms. Smith (P – Sn)



Ms. Morais (Gj – K)



Ms. Cash (So – Z)





***PARK HILL***  
***scholarship program***



**PARK HILL**  
**HIGH SCHOOL**

# Contact Information

## **Mrs. Ellen Reys**

Room: Office is in the foyer outside the upper gym

Phone: 816-359-6734

E-mail: [reyse@parkhill.k12.mo.us](mailto:reyse@parkhill.k12.mo.us)



# What is the A+ Scholarship Program worth?

With completion of the A+ Scholarship Program you are eligible for:

- **2 years of free tuition at MO community colleges or vocational/technical schools (~6,000)**
- **Scholarships at various 4-year universities in the state of MO:**
- **Examples:**
  - Park University - \$3,000/year
  - Truman State - \$500/year
  - Northwest Missouri State - \$1,500/year
  - Missouri Western - \$500/year

**\*Other GPA and/or  
ACT requirements  
may apply**



# What is the A+ Scholarship Program worth?

With completion of the A+ Scholarship Program you are eligible for:

- **A+ scholarship can be used within 4 years of high school graduation**
  - \*Military - get an additional 4 years after their commitment to the military is over
- **A+ can be used the summer BEFORE attending a 4-year college or university!**



# How do students sign up for A+?

At registration before the start of their freshman year.

There will be an A+ table at registration and students need to:

- Fill out an **A+ Participation Agreement**
- Complete the **A+ Workshop**
- Begin signing up and earning MAT hours through the A+ Schoology Course



# A+ Eligibility Requirements

- **Attendance rate of at least 95%**
  - **2.5 cumulative, unweighted GPA**
  - **50 hours of mentoring and tutoring** within Park Hill
  - **Good citizenship** - student may not accumulate 10 days OSS for any reason
  - **Proficient or Advanced on the Algebra 1 EOC**
- Be a citizen or a permanent resident non-citizen
  - Attend an A+ school for 2 consecutive years leading to graduation
  - Sign a written A+ Letter of Intent agreement
  - Apply for FAFSA (federal financial assistance) senior year
  - Register with Selective Service on 18th birthday (males only by law)



**PARK HILL  
HIGH SCHOOL**



# Mentoring & Tutoring Hours (MAT)

- Need 50 hours
- All MAT hours must go through the A+ office and approved prior to volunteering
- All events must be sponsored by Park Hill
- All events must take place on Park Hill property
- All events must be supervised by a Park Hill employee
- Must be mentoring or tutoring a student who is younger or of lower ability

## Ineligible Activities

Harvesters, YMCA, church groups, scouts, being a manager, making bulletin boards, babysitting, etc.



**PARK HILL  
HIGH SCHOOL**

# MAT Opportunities

## **PHHS serves:**

Chinn, Hopewell, Prairie Point, Renner, Tiffany Ridge, Congress, Plaza, Gerner

## **Activities:**

- Adventure Club & Prime Time
- Carnivals/Book Fairs
- Chess Club
- LEGO Club (formerly known as Bricks 4 Kidz)
- Individual Tutoring
- Intramurals
- PTA events



# Do activities in clubs & sports count toward A+?

**Yes! Lots of activities you do through clubs and sports can count!**

- Youth athletic camps
- Cheer & dance kid clinics
- Debate tournaments
- Student Council
  - Family Field Day
  - Family Dance
  - Student Registration
- Robotics
- Drama Camp
- Trojan Mentors
- Best Buddies



# Are there any classes that offer A+ hours?

## These classes are offered to juniors and seniors:

- |                                    |                          |
|------------------------------------|--------------------------|
| ● Child Growth & Development Class | 20 hours per term        |
| ● Aspiring Educators               | 50 hours per term        |
| ● Aspiring Professionals           | 12.5 hours as job shadow |
| ● Northland CAPS                   | 12.5 hours as job shadow |

## Job Shadows

- 12.5 hours → See website for instructions
- ALL job shadows must be PRE-APPROVED by the A+ Coordinator!



# Topics of Discussion

The High School Schedule

Graduation Requirements

Special Programs

Course Offerings

Future Opportunities

Questions

# Parallel Schedule

## FIRST TERM

## SECOND TERM

1<sup>st</sup>

Geometry

Drama

2<sup>nd</sup>

Red Days – ELA 1

White Days – Biology

Red Days – ELA 1

White Days – Biology

3<sup>rd</sup>

World History

Algebra IB

4<sup>th</sup>

Spanish I

Foundations of Fitness

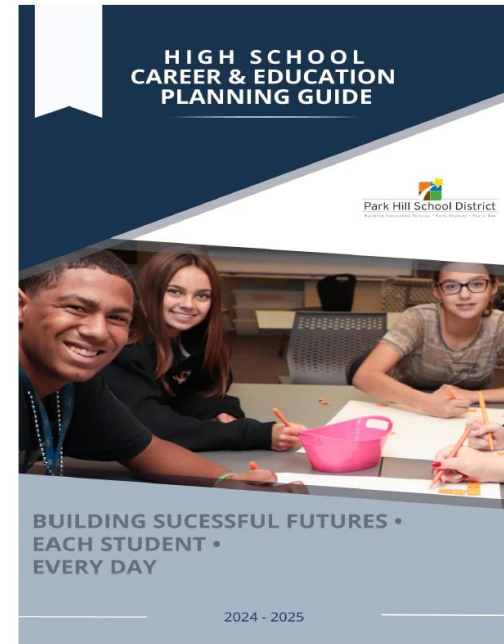
# High School Schedule

- Daily Schedule
  - 1st block 8:10 - 9:35
  - 2nd block 9:40 - 11:05
    - Announcements 11:05 - 11:10
  - Homeroom 11:15 - 11:50
  - 3rd block 11:55 - 1:45
  - 4th block 1:50 - 3:15

# Career and Educational Planning Guide (CEPG)

Access the planning guide through the Park Hill High School website or use this link:

## High School Career and Education Planning Guide





# AVID—

p.9 in CEPG

- ▶ **Advancement Via Individual Determination**
- ▶ Counts as an elective course worth 1.0 credit.
- ▶ Prepares students for college readiness and success.
- ▶ More information will be coming soon about the application/selection process.

# A+ Scholarship Program

(pg. 10 in CEPG)

- Signed A+ Letter of Intent
- Grade Point Average – 2.5 over 4 years
- 95% attendance average over 4 years
- 50 hours tutoring/mentoring over 4 years
- Score Proficient or Advanced on the Algebra I EOC exam
- Good Citizenship outlined in the Park Hill School District Policy JG in Student/Parent handbook
- Two Years of Consecutive Attendance at a Missouri A+ High School ending with graduation
- Some 4-year colleges and universities offer scholarships for A+ completion
- **Examples:**
  - Park University - \$3,000/year
  - Truman State - \$500/year
  - Northwest Missouri State - \$1,500/year
  - Missouri Western - \$500/year

## Questions???

**Mrs. Reys – A+ Coordinator**

A+ office outside upper gym

816-359-6734

[reyse@parkhill.k12.mo.us](mailto:reyse@parkhill.k12.mo.us)

# Schedule Changes–

p. 16 in CEPG

- ▶ A student's schedule will be changed for the following reasons:
  1. Computer Error
  2. Prerequisite not met
  3. Duplicate Credit
  4. To increase the level of rigor

## IMPORTANT –

**Be sure the classes you choose are truly the classes you want to take.**

# Graduation Requirements–p. 15 in CEPG

	Credits Required
Language Arts	4
Social Studies	3
Science	3 (Bio and Chemistry required)
Math	3 (Algebra II required)
PE	1
Fine Arts	1
Practical Arts	1
Health	.5
Personal Finance	.5
Electives	11
<b>TOTAL</b>	<b>28</b>

# English Language Arts – p. 21 in CEPG

- ▶ All 9<sup>th</sup> grade students enroll in English Language Arts 1 (ELA 1)
- ▶ Some students may also be required to take **English Language Arts Essentials**. Please check your recommendation sheet to see if you qualify to take this course in addition to ELA1.

1. **ENGLISH LANGUAGE ARTS (ELA) (p. 21)**

*All freshmen take ELA 1. Some freshmen also take ELA Essentials. Please see your counselor if you have questions.*

- ☐ English Language Arts 1
- ☐ English Language Arts Essentials

# Math – p. 34 in CEPG

- **All 9<sup>th</sup> grade students are required to take 2 math classes (one each semester).**
- Minimum requirements = all students must take through Algebra II or Algebra IIA/IIB to meet the minimum graduation requirement
- Your counselor has indicated which classes you should sign up for on your Freshman Course Recommendation Form.

## Regular Math Sequence

- ▶ Pre-Algebra and Algebra IA
- ▶ Algebra IA and Geometry
- ▶ Geometry and Algebra IB

## Accelerated Math Sequence

- ▶ Accelerated Geometry and Accelerated Algebra II

# Math continued

## 2. MATHEMATICS (p. 33)

*All freshmen take two math courses. Please choose your first term math course below:*

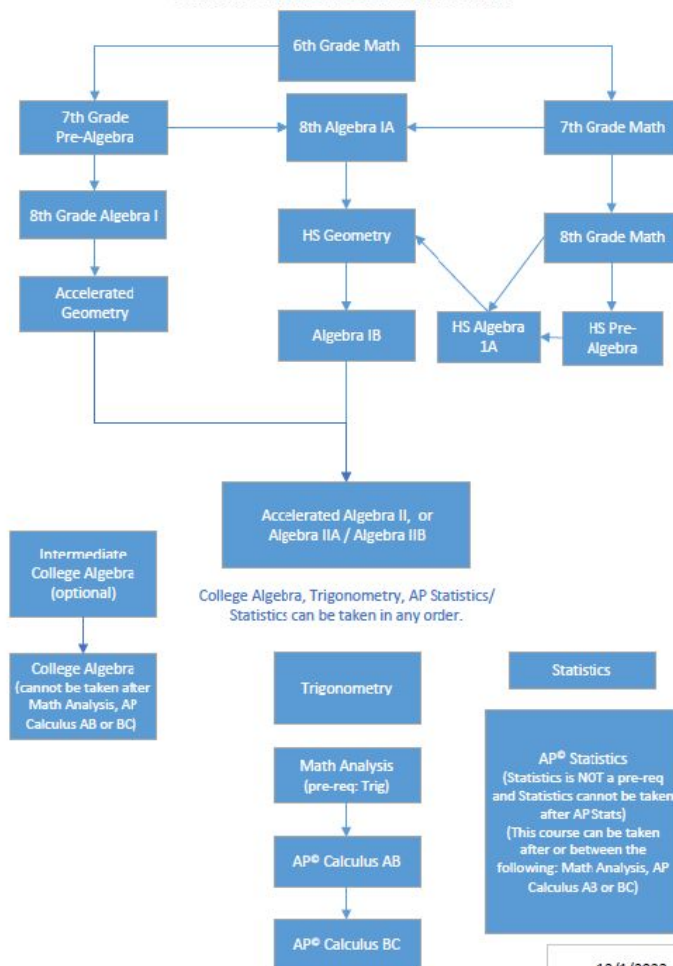
- ☐ Pre-Algebra
- ☐ Algebra IA
- ☐ Geometry
- ☐ Accelerated Geometry

*Please choose your second term math course below:*

- ☐ Algebra IA
- ☐ Geometry
- ☐ Algebra IB
- ☐ Accelerated Algebra II

# Math Flow Chart

Park Hill 6-12 Math Course Flow Chart





# Science– p. 44 in CEPG

- ▶ All 9<sup>th</sup> grade students enroll in Biology
- ▶ Some students may also enroll in Accelerated Chemistry – please check the recommendation sheet.

3. **SCIENCE** (p. 47)

*All freshmen take Biology. Check with your counselor if you also choose to take Accelerated Chemistry.*

☐

Biology

☐

Accelerated Chemistry

# Social Studies– p. 46 in CEPG

- ▶ All 9<sup>th</sup> grade students enroll in World History
- ▶ SOME students will also enroll in:
  - Advanced Placement (AP) Human Geography
    - Offered 2<sup>nd</sup> term for Freshmen who have this checked on the recommendation form after successfully completing World History

#### 4. **SOCIAL STUDIES** (p. 50)

*All freshmen take World History. Check with your counselor if you also choose to take AP Human Geography.*

- ☐ World History
- ☐ AP Human Geography

# Dual Credit - p. 6 in CEPG

---

- College credit through Metropolitan Community College
- 
- Dual Credit Requirements:
  - Meet prerequisite for any course
  - Students in the 10<sup>th</sup> grade must have an overall minimum GPA of a 3.0 (unweighted).
  - Qualifying ACT or Accuplacer score
  -
- Students will receive dual credit information from the course teacher.
- List of *tentative* courses in pg. 7-8 of planning guide

# Advanced Placement (AP) - P. 6

- ▶ Rigorous college-level curriculum
- ▶ Widely accepted: Earn potential college credits or advanced placement depending on AP Exam Score
- ▶ Scores: 1-5 (need a 3 or higher) to “pass”
  - ▶ Depends on each college’s passing score
- ▶ Extra GPA points

# Fine Arts- page 27

## ▶ **Art**

- ***Design and Drawing***
  - Intro art class
- ***Art History***
  - New class art history in wide variety of contexts

## ▶ **Music**

- ***Music Appreciation***
  - Non-performance class that explore a variety of music styles.
- ***Bass Clef or Treble Clef Choir***
- ***Campus Band***
- ***Concert Orchestra***

## ▶ **Theatre**

- ***Drama***
  - Introduction to the theater. Will become acquainted with the history of theater and various significant plays.
- ***Tournament Forensics***
  - This is a competitive acting class.

# 1.0 credit of Fine Art is required for graduation

## 9. FINE ARTS (p. 26)

### ART COURSES

☐ Design and Draw

### MUSIC COURSES

☐ Music Appreciation

☐ Bass Clef Choir

☐ Treble Clef Choir

☐ Campus Orchestra

☐ Campus Band

### THEATRE COURSES

☐ Drama

☐ Tournament Forensics

\*Art History

# Physical Education- page 38

- ▶ Students must pass 1.0 credit of PE for graduation
- ▶ Must take Foundations of Fitness or Weight Training and Conditioning before any other PE course.
- ▶ Option of Summer School for Foundations of Fitness (in person or virtual)

# Summer School 2024

**Wanting to sign up for a summer school course? Click the link below to sign up.**

[Summer School Registration](#)

Rising 9th graders can sign up for:

- ▶ Design and Draw (virtual or in-person)
- ▶ Foundations of Fitness (virtual or in-person)
- ▶ Introduction to Business
- ▶ Nutrition and Foods



# Practical Arts

## ▶ **Business/Technology** (pg.18)

- ▶ Introduction to Business

## ▶ **English/Language Arts** (pg. 23)

- Broadcast Journalism
- Journalism/Mass Media
- Photojournalism
- Debate (not a practical art)

## ▶ **Engineering** (pg. 20)

- Introduction to Engineering Design (PLTW)
  - Use 3D modeling software and use a problem-solving model to improve existing products and invent new ones.

## ▶ **Math** (pg. 37)

- PLTW Computer Science Essentials
- PLTW/AP Computer Science Principles

# Practical Arts

▶ **Family & Consumer Science**  
(pg. 26)

- ▶ Fashion and Apparel I
- ▶ Housing and Interior Environment
- ▶ Nutrition and Foods

▶ **Industrial Technology** (pg. 33)

- Home Maintenance

# World Language

- page 31

- ▶ German I and German II
- ▶ Spanish I and Spanish II
- ▶ Not required for high school graduation
- ▶ Minimum of two credits of the same language are required for many college admissions
- ▶ Dual Credit Opportunities for the 3<sup>rd</sup>, 4<sup>th</sup> and AP levels.



DUE DATE!!!!

- ▶ Completed Enrollment Sheets are due to Your Counseling office by February 5, 2024.

# Enrollment Night Information for Parents

- ▶ **Remind your parents/guardians...**
- ▶ Parent Enrollment Information Night
  - ▶ January 30, 2024
  - ▶ 6:30 pm in PHHS Auditorium

# Before you turn in your form, be sure to:

- ▶ **Circle 8 courses.**

**All students choose:**

English Language Arts 1

2 Math classes

Biology

World History

- ▶ Select **2 alternate** courses in the gray box
  - ▶ You may end up with these courses.
  - ▶ Choose something you want.
- ▶ **Parent/Guardian signature** required

## ALTERNATE COURSE

*Select one alternate course request from the courses listed below. Courses are listed in alphabetical order. Students will be scheduled into their alternative course if their primary course requests cannot be fulfilled.*

Bass Clef Choir	Introduction to Business
Broadcast Journalism	Journalism / Mass Media
Debate	Music Appreciation
Design and Draw	Nutrition & Foods
Drama	Photojournalism
Fashion & Apparel I	PLTW Computer Sci. Essentials
Foundations of Fitness	PLTW/AP Computer Sci. Principles
French I	PLTW Intro. to Engineering Design
French II	Spanish I
German I	Spanish II
German II	Treble Clef Choir
Home Maintenance	Tournament Forensics
Housing & Interior Env.	Weight Training and Conditioning

## REQUIRED SIGNATURES

*Students should carefully consider course selections. Rules regarding schedule changes are included in the High School Career and Education Planning Guide (p. 16).*

**STUDENT SIGNATURE:** \_\_\_\_\_ **DATE:** \_\_\_\_\_

**PARENT SIGNATURE:** \_\_\_\_\_ **DATE:** \_\_\_\_\_

# Future Ready Assets

**New for the Class of 2028.**

Park Hill Future Ready Assets: Families



## Additional Information Opportunities - Outside the Media Center

- ▶ A + program
- ▶ Northland CAPS
- ▶ Northland Career Center
- ▶ Park Hill Professional Studies





Welcome to Park Hill High  
School

**We look forward to working with  
you and your family!**